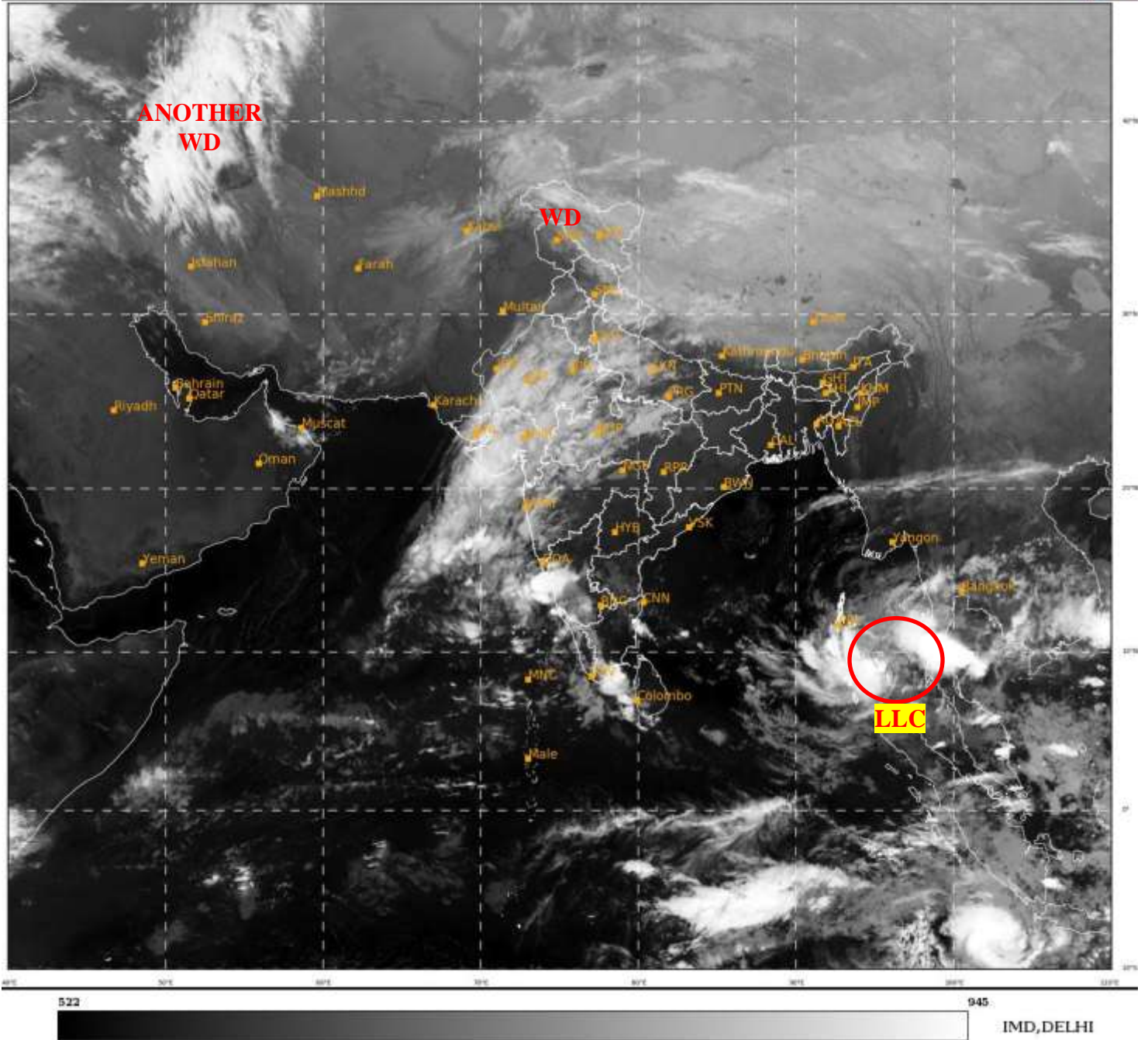




SATELLITE BULLETIN BASED ON SATELLITE
IMAGERIES AND PRODUCTS
30.11.2021 TIME 1800 UTC

SAT : INSAT-3D IMG
IMG_TIR1 10.8 um
L1C Mercator

30-11-2021/(1700 to 1726) GMT
30-11-2021/(2230 to 2256) IST



TCIN50 DEMS 301800
SATELLITE BULLETIN BASED ON INSAT-3D PIC OF 301700 UTC (.)
REGION COVERED BETWEEN LAT 50.0°N TO 30.0°S AND LONG 40.0°E TO 125.0°E (.)

SALIENT FEATURES:-

LLC OVER CENTRAL PARTS OF ANDAMAN SEA & N/HOOD:-

LOW LEVEL CIRCULATION (LLC) OVER CENTRAL PARTS OF ANDAMAN SEA & N/HOOD (.)
ASSTD SCT TO BKN LOW/MED CLOUDS WITH EMMDD INT TO V INT CONVTN OVER SE BAY
ANDAMAN SEA TENASSERIM COAST S THAILAND GULF OF THAILAND AND N/HOOD (.)
MINIMUM CTT MINUS 93 DEG C (.)

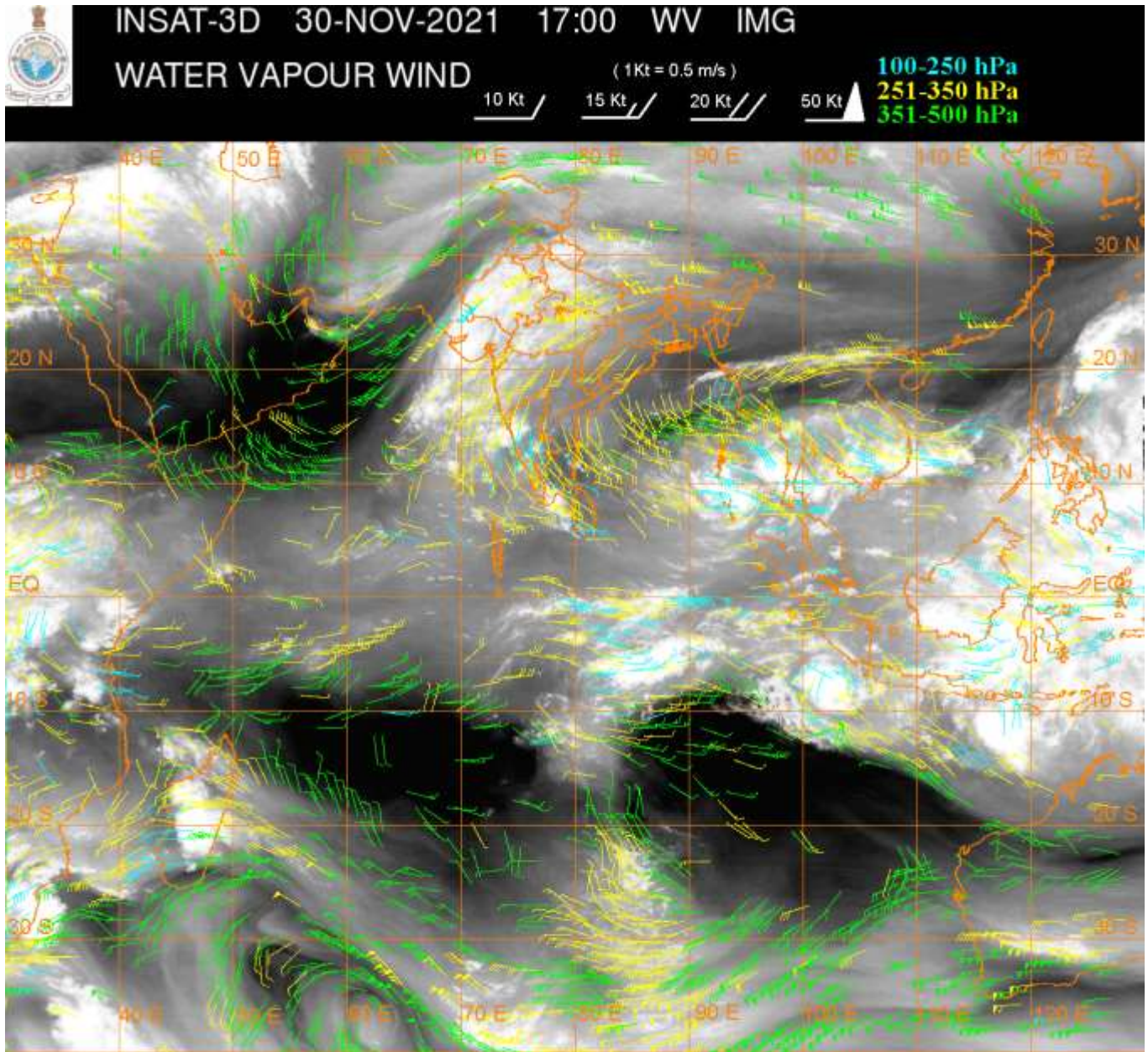
CONVECTION OVER ARABIAN SEA:-

CONVECTION OVER EC ARSEA (MINIMUM CTT MINUS 93 DEG C) NE ARSEA PERSISTS AND
SLIGHTLY DECREASED OVER SE ARSEA LAKSHADWEEP AREA (.)

WESTERN DISTURBANCE (WD):-

SCT MULTILAYERED CLOUDS OVER SE IRAN AFGAN PAK J&K LADAKH AND N/HOOD IN ASSW **WD** OVER THE AREA (.)

SCT MULTILAYERED CLOUDS OVER CASPIAN SEA N IRAN AND N/HOOD IN ASSW **ANOTHER WD** OVER THE AREA (.)



CLOUDS DESCRIPTION WITHIN INDIA:-

NORTH:-

SCT LOW/MED CLOUDS WITH EMBDD MOD TO INT CONVTN OVER NW LADAKH EXT EC HP UTRKND NW UP (.) SCT LOW/MED CLOUDS WITH EMBDD WK TO MOD CONVTN OVER REST LADAKH J&K REST HP PJB HARY DLH REST UP (.)

EAST:-

SCT LOW/MED CLOUDS WITH EMBDD WK CONVTN OVER W BHR NW JHRKND N CHTGH EXT N SHWB SKM ARUPR (.) ISOL LOW/MED CLOUDS OVER MEGHA ASSAM NAGA MANI (.)

WEST:-

SCT LOW/MED CLOUDS WITH EMBDD MOD TO INT CONVTN OVER RAJ W MP GUJ NORTH MADHYA MAHA N KKN GOA (.) SCT LOW/MED CLOUDS WITH EMBDD WK TO MOD CONVTN OVER E MP REST MAHA (.)

SOUTH:-

SCT TO BKN LOW/MED CLOUDS WITH EMBDD INT TO V INT CONVTN OVER N COTL KRNTK ADJ SW NIK NW SIK (MINIMUM CTT MINUS 83 DEG C) S ANDAMAN & NICOBAR ILS (MINIMUM CTT MINUS 73 DEG C) (.) SCT LOW/MED CLOUDS WITH EMBDD MOD TO INT CONVTN OVER S COTL KRNTK REST SIK KER SW TN (.) SCT LOW/MED CLOUDS WITH EMBDD WK TO MOD CONVTN OVER REST NIK RYLSM S COTL AP REST TN LKSDP REST ANDAMAN ILS (.) ISOL LOW/MED CLOUDS OVER W TLNGN (.)

ARABIAN SEA:-

SCT TO BKN LOW/MED CLOUDS WITH EMBDD INT TO V INT CONVTN OVER EC ARSEA OFF KRNTK COAST ALSO OVER REST EC ARSEA (.) SCT LOW/MED CLOUDS WITH EMBDD MOD TO INT CONVTN OVER NE ARSEA SOUTH ARSEA COMORIN AND WK CONVTN OVER EXT NW ARSEA (.)

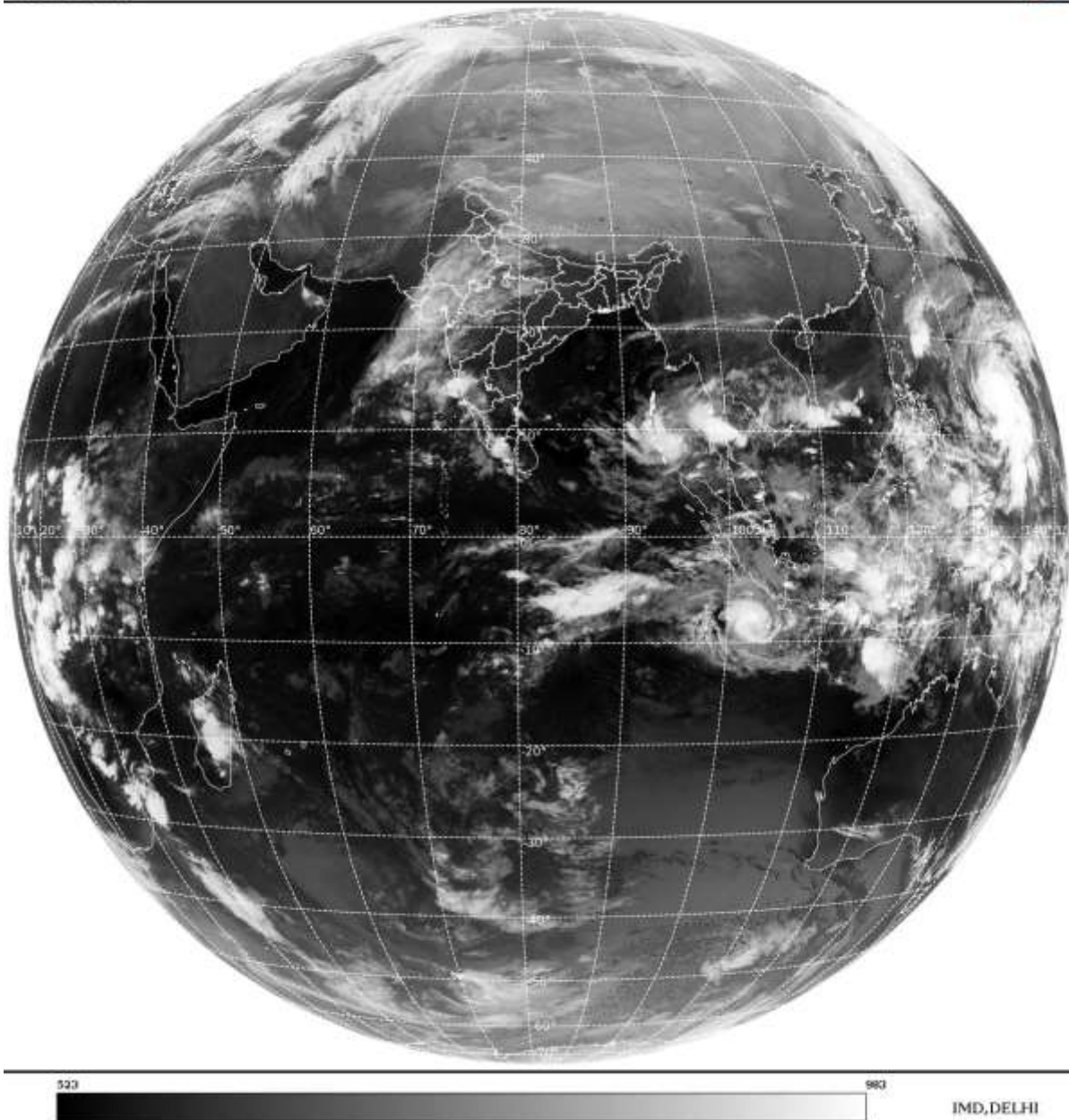
BAY OF BENGAL & ANDAMAN SEA:-

SCT TO BKN LOW/MED CLOUDS WITH EMBDD INT TO V INT CONVTN OVER ANDAMAN SEA AND SE BAY (.) SCT LOW/MED CLOUDS WITH EMBDD MOD TO INT CONVTN OVER SOUTH PARTS OF NE BAY AND SW BAY (.) SCT LOW/MED CLOUDS WITH EMBDD ISOL WK TO MOD CONVTN OVER CENTRAL BAY (.)

CLOUDS DESCRIPTION OUTSIDE INDIA:-

SAT : INSAT-3D IMG
Thermal Infrared1 Count 10.8 um
LIB FULL DISK

30-11-2021/(1700 to 1726) GMT
30-11-2021/(2230 to 2256) IST



SCT LOW/MED CLOUDS WITH EMBDD MOD TO INT CONVTN OVER SW SRI LANKA GULF OF MANNAR N MALDIVES NEPAL TIBET CHINA YELLOW SEA E CHINA SEA S MYANMAR THAILAND GULF OF THAILAND CAMBODIA LAOS VIETNAM SUMATRA STR OF MALACCA MALAYSIA SOUTH CHINA SEA BORNEO JAVA ILS & SEA CELEBES ILS & SEA PHILIPPINES SULU SEA MADAGASCAR MOZAMBIQUE CHANNEL AND OVER INDIAN OCEAN BET LAT 5.0N TO 13.0S LONG 52.0E TO 120.0E (.)

TOO 30/2340EF=

NNNN

LEGEND:-

REGION	NORTH	J&K HP PJB HARY DLH UP UTRKND
	EAST	BHR JHRKND CHTGH ORS WB SKM NORTH- EAST STATES
	WEST	RAJ MP GUJ MAHA GOA
	SOUTH	TLNGN AP KRNTK KER TN LKSDP ANDAMAN & NICOBAR ILS

CLOUD DISTRIBUTION	ISOL	ISOLATED (LESS THAN 25%)
	SCT	SCATTERED (25 TO 50%)
	BKN	BROKEN (51 TO 75%)
	SLD	SOLID (GREATER THAN 75%)
CLOUDS TOP TEMPERATURE	CTT	CLOUD TOP TEMPERATURE
CONVECTION	WK CONVTN	WEAK CONVECTION (CTT GREATER THAN -25°C)
	MOD CONVTN	MODERATE CONVECTION (CTT BETWEEN -25°C TO -40°C)
	INT CONVTN	INTENSE CONVECTION (CTT BETWEEN -41°C TO -70°C)
	V INT CONVTN	VERY INTENSE CONVECTION (CTT LESS THAN -70°C)
METEOROLOGICAL SUB-DIVISIONS, STATES & UNION TERRITORIES	ARUPR	ARUNACHAL PRADESH
	BHR	BIHAR
	CHTGH	CHHATTISGARH
	COTL AP	COASTAL ANDHRA PRADESH
	COTL KRNTK	COASTAL KARNATAKA
	COTL ORS	COASTAL ORISSA
	GUJ	GUJARAT
	GWB	GANGETIC WEST BENGAL
	HARY	HARYANA
	DLH	DELHI
	HP	HIMACHAL PRADESH
	J&K	JAMMU AND KASHMIR
	JHRKND	JHARKHAND
	KER	KERALA
	KKN	KONKAN
	LKSDP	LAKSHADWEEP
	M MAHA	MADHYA MAHARASHTRA
	MAHA	MAHARASHTRA
	MANI	MANIPUR
	MEGHA	MEGHALAYA
	MIZO	MIZORAM
	MP	MADHYA PRADESH
	MRTHWD	MARATHWADA
	NAGA	NAGALAND

	N COTL AP	NORTH COASTAL ANDHRA PRADESH
	NIK	NORTH INTERIOR KARNATAKA
	ORS	ORISSA
	PJB	PUNJAB
	RAJ	RAJASTHAN
	RYLSM	RAYALASEEMA
	SAU & KUTCH	SAURASHTRA & KUTCH
	SHWB	SUB-HIMALAYAN WEST BENGAL
	SIK	SOUTH INTERIOR KARNATAKA
	SKM	SIKKIM
	TLNGN	TELANGANA
	TN	TAMIL NADU
	TRP	TRIPURA
	UP	UTTAR PRADESH
	UTRKN	UTTARAKHAND
	VID	VIDHARBHA
	SHWB	SUB HIMALAYAN WEST BENGAL
	GWB	GANGETIC WEST BENGAL
	ARSEA	ARABIAN SEA
	ILS	ISLANDS
MISCELLANEOUS	ASSW	IN ASSOCIATION WITH
	ASSTD	ASSOCIATED
	LLC	LOW LEVEL CIRCULATION
	EMBDD	EMBEDDED
	N/HOOD	NEIGHBOURHOOD
	EXT	EXTREME