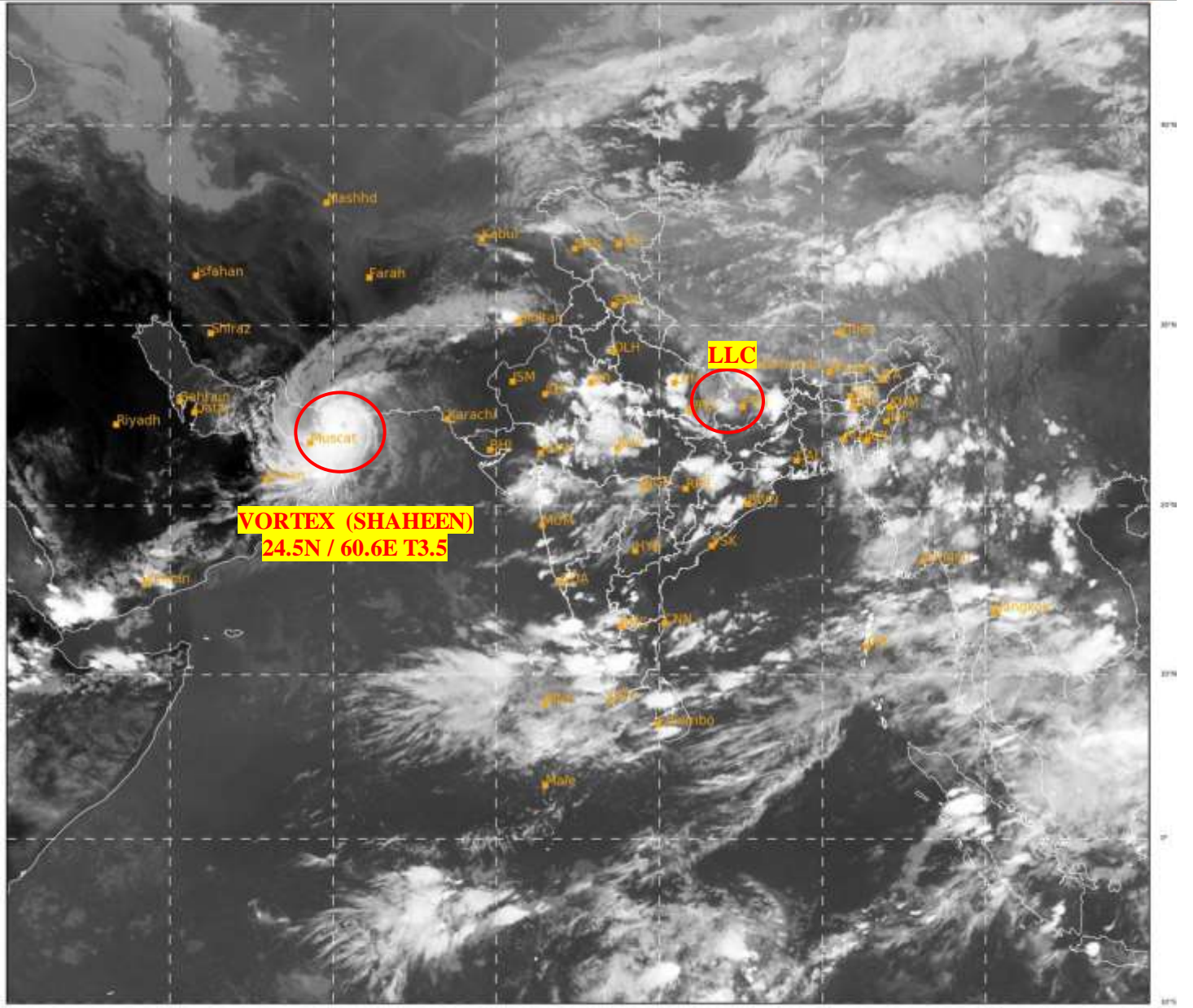




SATELLITE BULLETIN BASED ON SATELLITE
IMAGERIES AND PRODUCTS
02.10.2021 TIME 1200 UTC

SAT : INSAT-3D IMG
IMG_TIR1 10.8 um
LIC Mercator

02-10-2021/(1200 to 1226) GMT
02-10-2021/(1730 to 1756) IST



396

941

IMD, DELHI

TCIN50 DEMS 021200

SATELLITE BULLETIN BASED ON INSAT-3D PIC OF 021200 UTC (.)

REGION COVERED BETWEEN LAT 50.0°N TO 30.0°S AND LONG 40.0°E TO 125.0°E (.)

SALIENT FEATURES:-

VORTEX (SHAHEEN) OVER NW ARSEA & N/HOOD:-

VORTEX (SHAHEEN) OVER NW ARSEA & N/HOOD CENTERED NEAR **24.5N / 60.6E** (.) INTENSITY **T3.5** (.) ASSTD BKN LOW/MED CLOUDS WITH EMBDD INT TO V INT CONVTN OVER ARSEA BET LAT 21.5N TO 25.0N LONG 60.0E TO 63.5E MAKARAN COAST (.) MINIMUM CTT MINUS **93** DEG C (.)

LLC OVER W BHR ADJ E UP & N/HOOD:-

SCT LOW/MED CLOUDS WITH EMBDD MOD TO INT CONVTN OVER W BHR ADJ E UP IN ASSW LOW LEVEL CIRCULATION (LLC) OVER THE AREA (MINIMUM CTT MINUS **54** DEG C) (.)



INSAT-3D 02-OCT-2021 12:00 WV IMG

WATER VAPOUR WIND

(1Kt = 0.5 m/s)

10 Kt

15 Kt

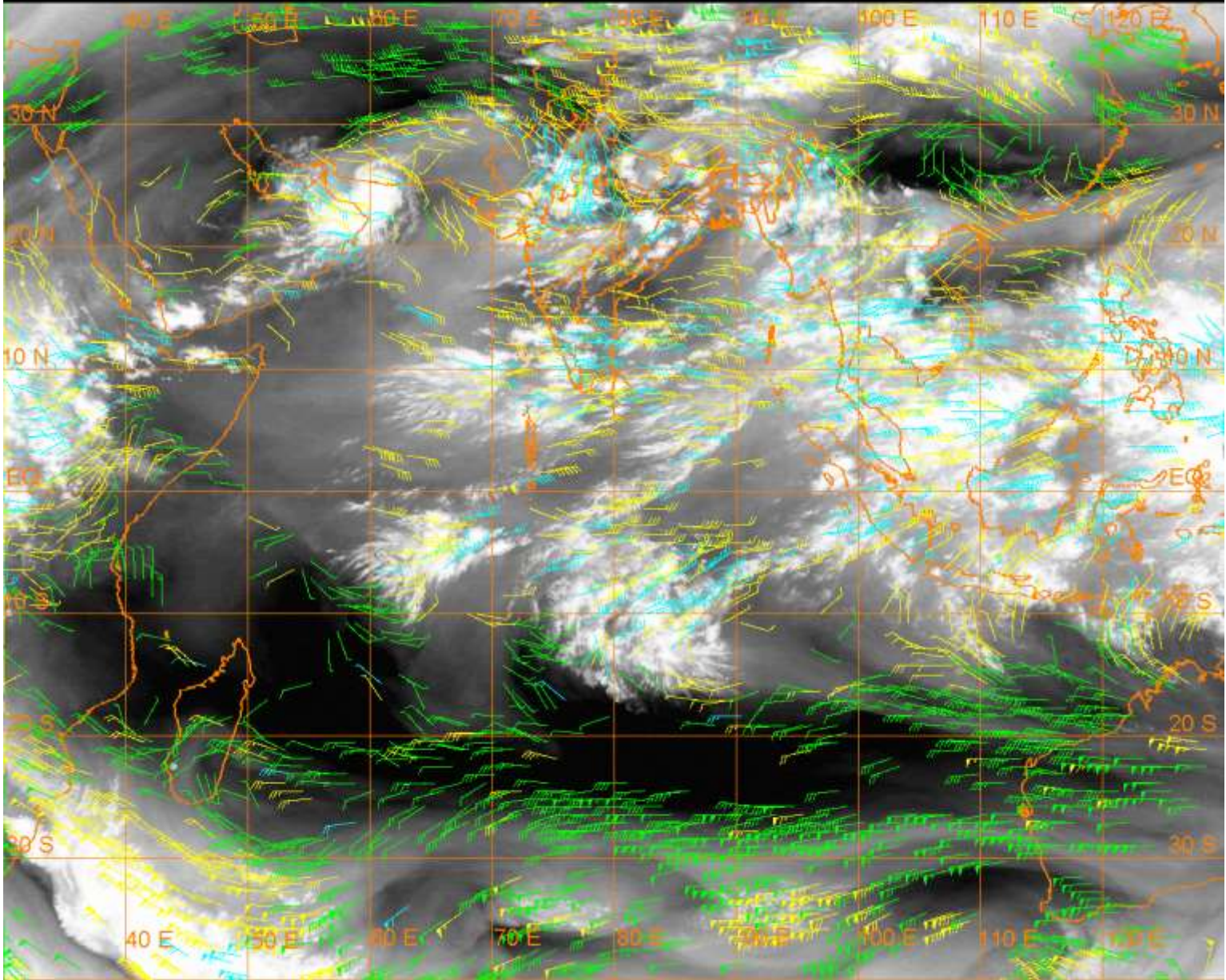
20 Kt

50 Kt

100-250 hPa

251-350 hPa

351-500 hPa



CLOUDS DESCRIPTION WITHIN INDIA:-

NORTH:-

SCT LOW/MED CLOUDS WITH EMBDD INT TO V INT CONVTN OVER C UP (MINIMUM CTT MINUS 93 DEG C) AND ISOL MOD TO INT CONVTN OVER NW UTRKND E UP (.) SCT LOW/MED CLOUDS WITH EMBDD WK TO MOD CONVTN OVER LADAKH J&K HP REST UTRKND HARY PJB (.)

EAST:-

SCT LOW/MED CLOUDS WITH EMBDD INT TO V INT CONVTN OVER NE BHR NE JHRKND ORS N CHTGH SE ARUPR (MINIMUM CTT MINUS 93 DEG C) (.) SCT LOW/MED CLOUDS WITH EMBDD MOD TO INT CONVTN OVER N BHR N SHWB W ARUPR ASSAM S CHTGH MEGHA TRP NAGA MANI MIZO (.)SCT LOW/MED CLOUDS WITH EMBDD ISOL WK TO MOD CONVTN OVER S JHRKND REST ORS W GWB S SHWB REST ARUPR (.)SCT LOW/MED CLOUDS OVER W JHRKND REST CHTGH REST ORS E GWB (.)

WEST:-

SCT LOW/MED CLOUDS WITH EMBDD INT TO V INT CONVTN OVER NW & C MP E GUJ SE & E RAJ (MINIMUM CTT MINUS 88 DEG C) (.) SCT LOW/MED CLOUDS WITH EMBDD MOD TO INT CONVTN OVER VID NORTH MADHYA MAHA ADJ SW MP S GUJ N KKN N RAJ (.)SCT LOW/MED CLOUDS WITH EMBDD WK TO MOD CONVTN OVER REST GUJ NE MP REST MAHA (.) SCT LOW/MED CLOUDS OVER REST RAJ REST MP & GOA (.)

SOUTH:-

SCT LOW/MED CLOUDS WITH EMBDD INT TO V INT CONVTN OVER NW TN KER SIK SW AP (MINIMUM CTT MINUS 83 DEG C) (.) SCT LOW/MED CLOUDS WITH EMBDD MOD TO INT

CONVTN OVER N TLNGN S TN S AP (.) SCT LOW/MED CLOUDS WITH EMBDD WK TO MOD
CONVTN OVER KER LKSDP ANDAMN & NICOBAR ILS (.) SCT LOW/MED CLOUDS OVER REST
PARTS OF REGION (.)

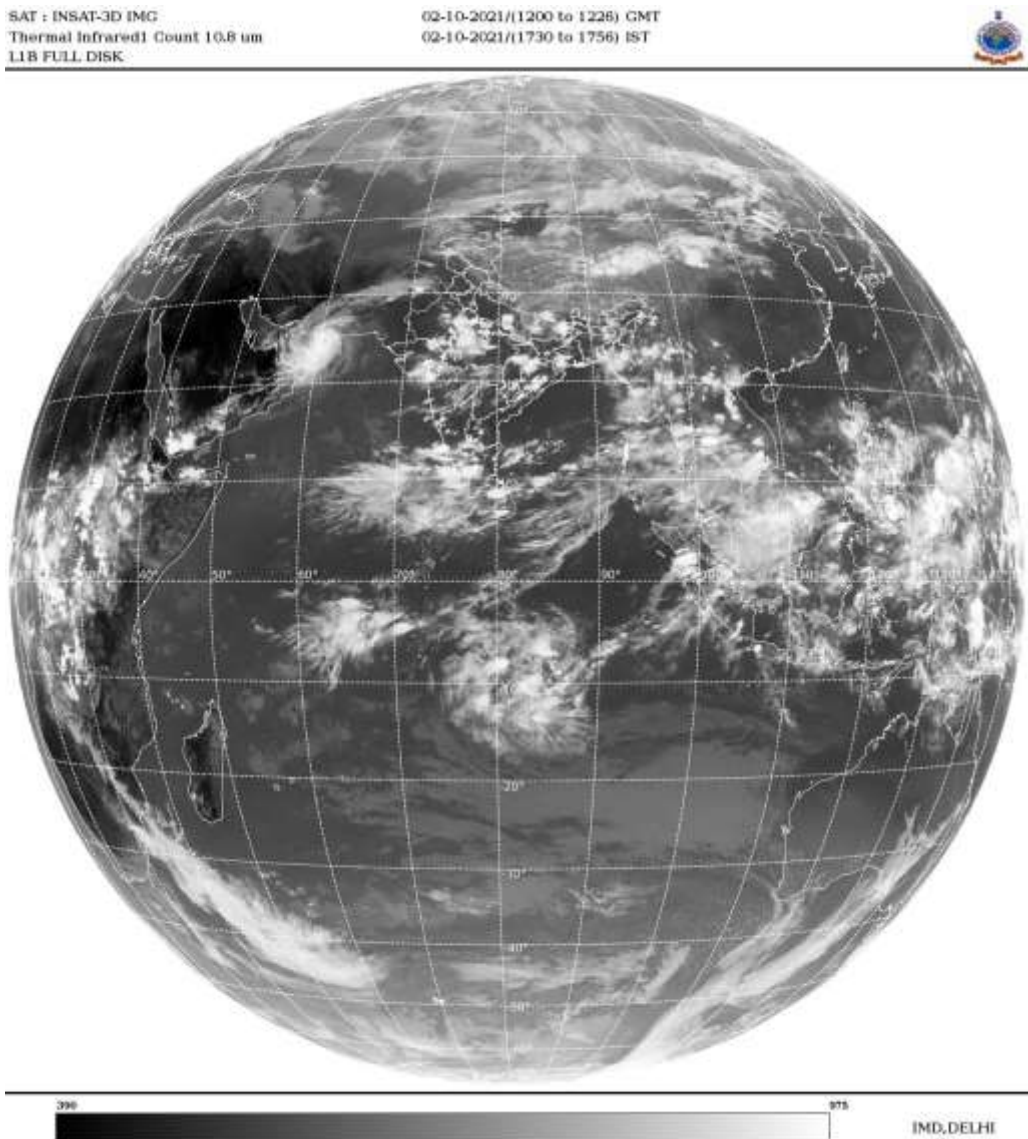
ARABIAN SEA:-

BKN LOW/MED CLOUDS WITH EMBDD INT TO V INT CONVTN OVER NW ARSEA BET LAT 21.5N
TO 25.0N LONG 60.0E TO 63.5E (MINIMUM CTT MINUS 93 DEG C) (.) SCT LOW/MED CLOUDS
WITH EMBDD MOD TO INT CONVTN OVER SE ARSEA & COMORIN AND WK TO MOD CONVTN
OVER EC BAY (.)

BAY OF BENGAL & ANDAMAN SEA:-

SCT LOW/MED CLOUDS WITH EMBDD MOD TO INT CONVTN OVER ARAKAN COAST S BAY
ANDAMAN SEA GULF OF MARTABAN (.)

CLOUDS DESCRIPTION OUTSIDE INDIA:-



SCT LOW/MED CLOUDS WITH EMBDD MOD TO INT CONVTN OVER SRI LANKA GULF OF
MANNAR MALDIVES PAK NEPAL MYANMAR THAILAND GULF OF THAILAND CAMBODIA S
LAOS SUMATRA STR OF MALACCA MALAY PENINSULA BORNEO SOUTH CHINA SEA JAVA ILS
& SEA CELEBES ILS & SEA PHILIPPINES AND OVER INDIAN OCEAN BET LAT 5.0N TO 16.0S
LONG 62.0E TO 110.0E (.)

TOO 02/1900EF=

NNNN

LEGEND:-

	NORTH	J&K HP PJB HARY DLH UP UTRKND
--	-------	-------------------------------

REGION	EAST	BHR JHRKND CHTGH ORS WB SKMNORTH- EAST STATES
	WEST	RAJ MP GUJ MAHA GOA
	SOUTH	TLNGN AP KRNTK KER TN LKSDP ANDAMAN & NICOBAR ILS

CLOUD DISTRIBUTION	ISOL	ISOLATED (LESS THAN 25%)	
	SCT	SCATTERED (25 TO 50%)	
	BKN	BROKEN (51 TO 75%)	
	SLD	SOLID (GREATER THAN 75%)	
CLOUDS TOP TEMPERATURE	CTT	CLOUD TOP TEMPERATURE	
CONVECTION	WK CONVTN	WEAK CONVECTION (CTT GREATER THAN -25°C)	
	MOD CONVTN	MODERATE CONVECTION (CTT BETWEEN -25°C TO -40°C)	
	INT CONVTN	INTENSE CONVECTION (CTT BETWEEN -41°C TO -70°C)	
	V INT CONVTN	VERY INTENSE CONVECTION (CTT LESS THAN -70°C)	
METEOROLOGICAL SUB-DIVISIONS, STATES & UNION TERRITORIES	ARUPR	ARUNACHAL PRADESH	
	BHR	BIHAR	
	CHTGH	CHHATTISGARH	
	COTL AP	COASTAL ANDHRA PRADESH	
	COTL KRNTK	COASTAL KARNATAKA	
	COTL ORS	COASTAL ORISSA	
	GUJ	GUJARAT	
	GWB	GANGETIC WEST BENGAL	
	HARY	HARYANA	
	DLH	DELHI	
	HP	HIMACHAL PRADESH	
	J&K	JAMMU AND KASHMIR	
	JHRKND	JHARKHAND	
	KER	KERALA	
	KKN	KONKAN	
	LKSDP	LAKSHADWEEP	
	M MAHA	MADHYA MAHARASHTRA	
	MAHA	MAHARASHTRA	
	MANI	MANIPUR	
	MEGHA	MEGHALAYA	
	MIZO	MIZORAM	
	MP	MADHYA PRADESH	
		MRTHWD	MARATHWADA
		NAGA	NAGALAND
N COTL AP		NORTH COASTAL ANDHRA PRADESH	
NIK		NORTH INTERIOR KARNATAKA	
ORS		ORISSA	
PJB		PUNJAB	

	RAJ	RAJASTHAN
	RYLSM	RAYALASEEMA
	SAU & KUTCH	SAURASHTRA & KUTCH
	SHWB	SUB-HIMALAYAN WEST BENGAL
	SIK	SOUTH INTERIOR KARNATAKA
	SKM	SIKKIM
	TLNGN	TELANGANA
	TN	TAMIL NADU
	TRP	TRIPURA
	UP	UTTAR PRADESH
	UTRKN	UTTARAKHAND
	VID	VIDHARBHA
	SHWB	SUB HIMALAYAN WEST BENGAL
	GWB	GANGETIC WEST BENGAL
	ARSEA	ARABIAN SEA
	ILS	ISLANDS
MISCELLANEOUS	ASSW	IN ASSOCIATION WITH
	ASSTD	ASSOCIATED
	LLC	LOW LEVEL CIRCULATION
	EMBDD	EMBEDDED
	N/HOOD	NEIGHBOURHOOD
	EXT	EXTREME