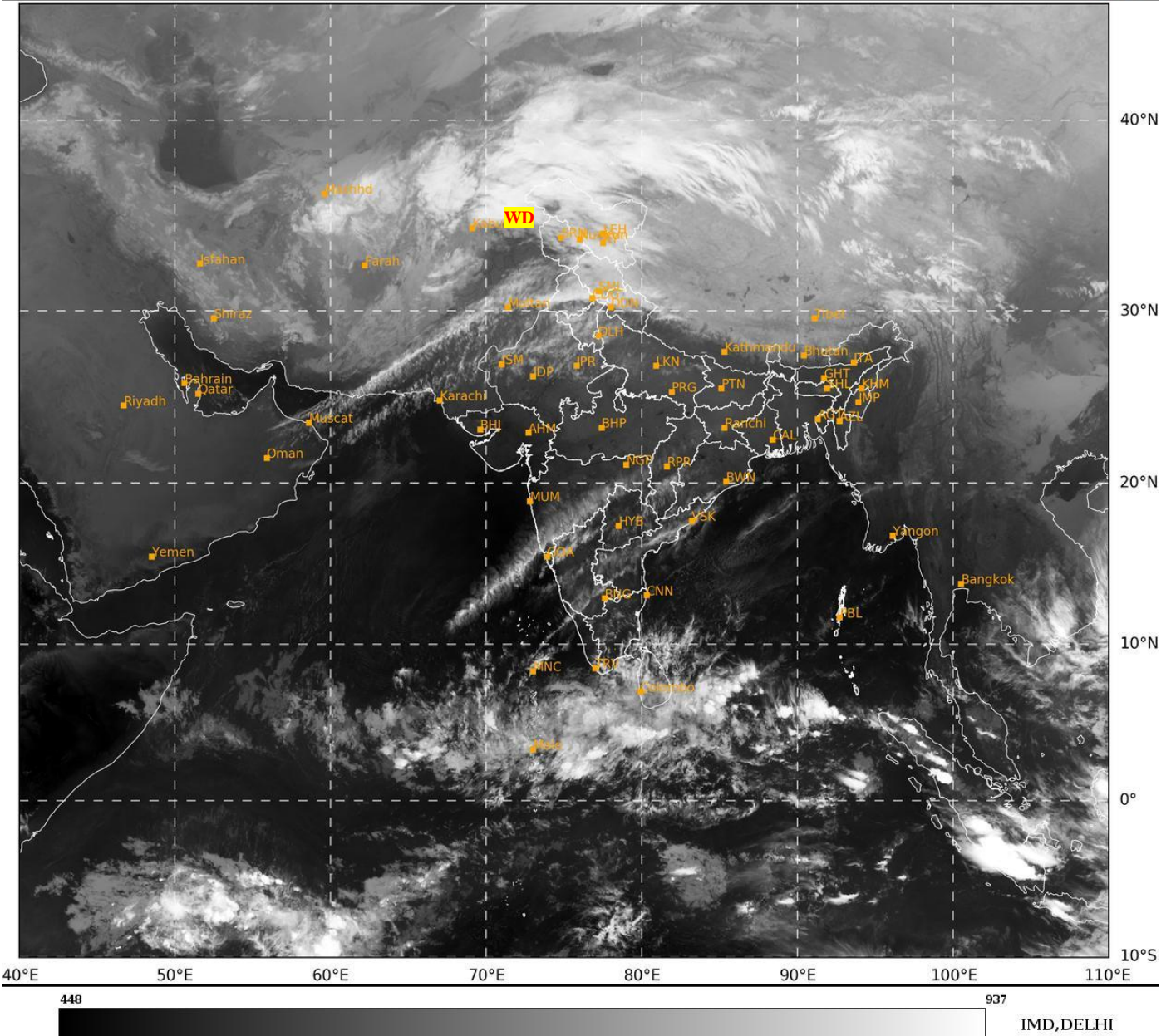




**SATELLITE BULLETIN BASED ON SATELLITE  
IMAGERIES AND PRODUCTS**  
**02.01.2025 TIME 1500 UTC**

SAT : INSAT-3DR IMG  
IMG\_TIR1 10.8 um  
LIC Mercator

02-01-2025/(1445 to 1512) GMT  
02-01-2025/(2015 to 2042) IST



TCIN50 DEMS 021500

SATELLITE BULLETIN BASED ON INSAT-3DR PIC OF 021445 UTC (.)

REGION COVERED BETWEEN LAT 50.0°N TO 35.0°S AND LONG 40.0°E TO 125.0°E (.)

**SALIENT FEATURES:-**

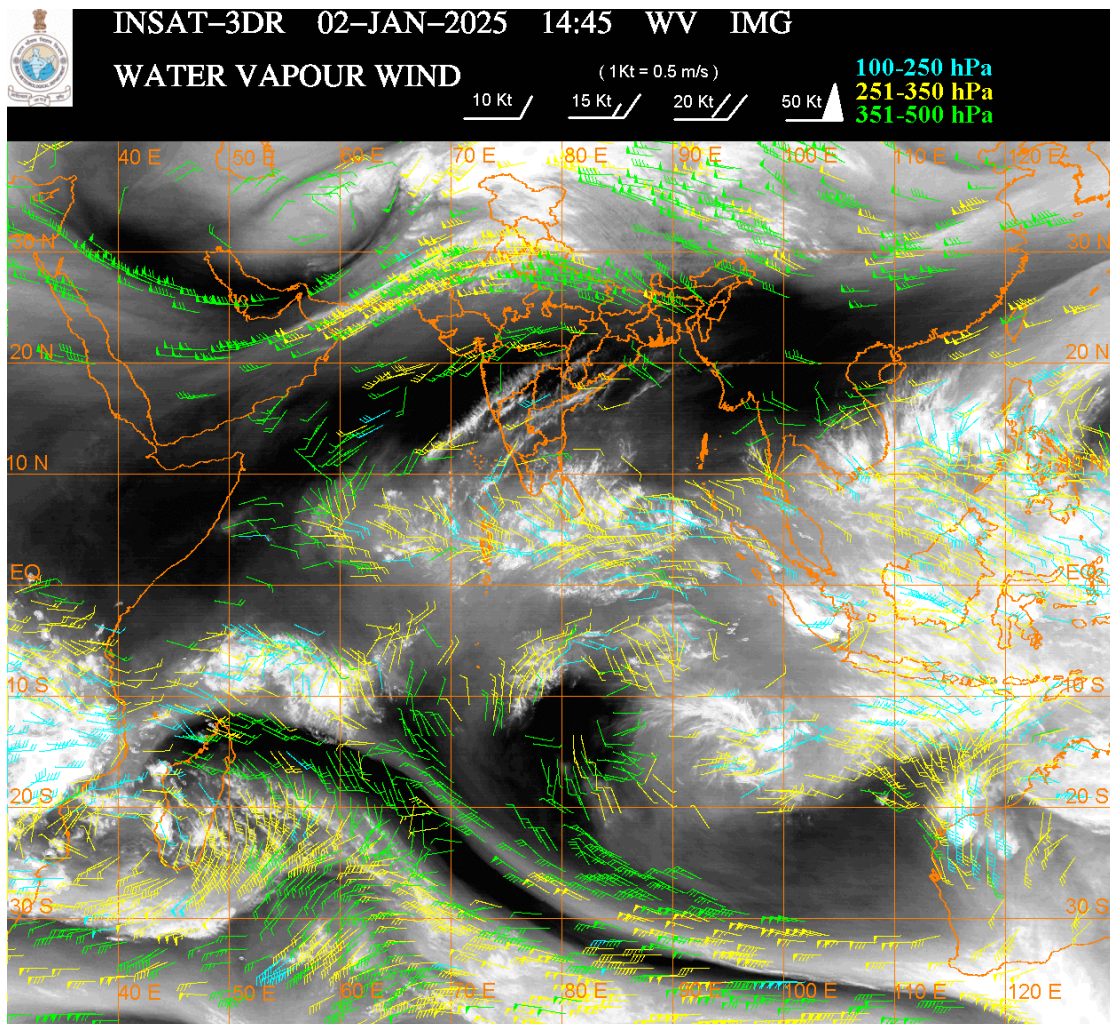
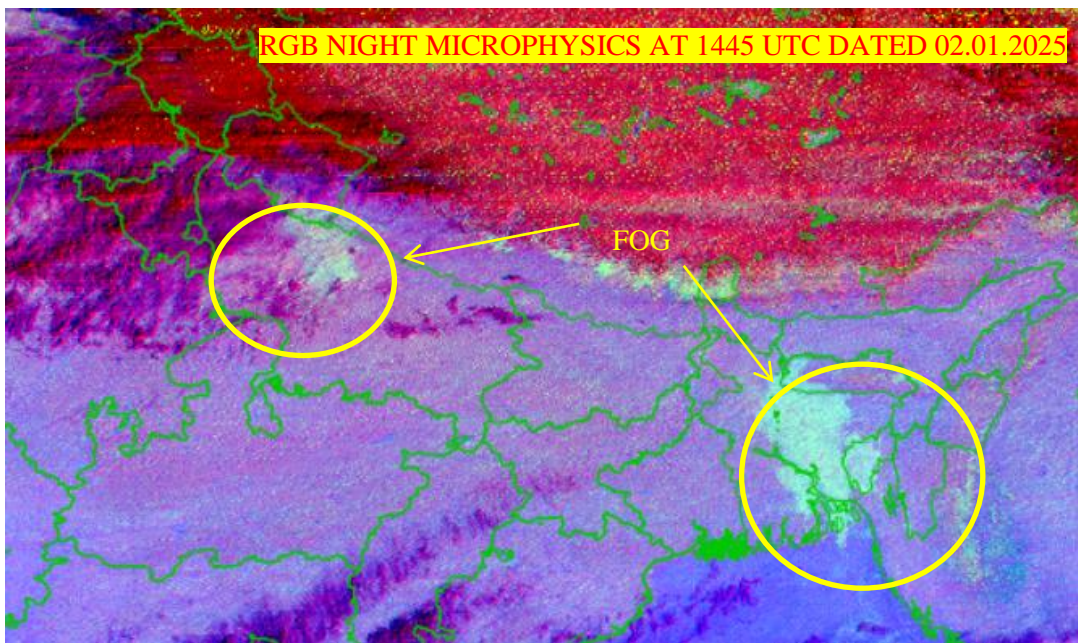
**WESTERN DISTURBANCE:-**

SCT MULTILAYERED CLOUDS OVER IRAN AFGAN PAK LADAKH J&K HP UTRKND PJB HARY RAJ W UP AND N/HOOD IN ASSW **WD** OVER THE AREA (.)

**FOG / LOW CLOUDS:-**

RGB COMPOSITE NIGHT MICROPHYSICS IMAGERY OF INSAT 3DR (RAPID) AT 1445 UTC SHOWS SCT FOG / LOW CLOUDS OVER SE UTRKND NW UP SE ASSAM MEGHA TRP AND BD (.)





**CLOUDS DESCRIPTION WITHIN INDIA:-**

**NORTH:-**

SCT LOW/MED CLOUDS WITH EMBDD MOD TO INT CONV TN OVER LADAKH J&K HP N UTRKND N PJB AND WK TO MOD CONV TN OVER S PJB S UTRKND HARY N UP (.) SCT LOW/MED CLOUDS OVER DLH S UP (.)

**EAST:-**

SCT LOW/MED CLOUDS WITH EMBDD ISOL WK CONV TN OVER S CHTGH S ORS SKM (.) SCT LOW/MED CLOUDS OVER NW BHR JHRKND N CHTGH N ORS SHWB REST NE STATES (.)

**WEST:-**

SCT LOW/MED CLOUDS WITH EMBDD WK TO MOD CONV TN OVER N RAJ SOUTH MADHYA MAHA MRTHWD S VID S KKN GOA (.) SCT LOW/MED CLOUDS OVER NW MP NW GUJ (.)

**SOUTH:-**

SCT LOW/MED CLOUDS WITH EMBDD WK TO MOD CONV TN OVER TLNGN RYLSM N COTL KRNTK EXT PARTS OF KER TN (.) SCT LOW/MED CLOUDS OVER S COTL AP REST KER LKSDP ILS AREA ANDAMAN NICOBAR ILS (.)



**ARABIAN SEA:-**

**SCT LOW/MED CLOUDS WITH EMBDD MOD TO INT CONVTN OVER EC ARSEA OFF GOA-KRNTK COASTS SOUTH ARSEA MALDIVES & COMORIN AREA (.) SCT LOW/MED CLOUDS WITH EMBDD ISOL WK TO MOD CONVTN OVER NORTH ARSEA & LKSDP ILS AREA (.)**

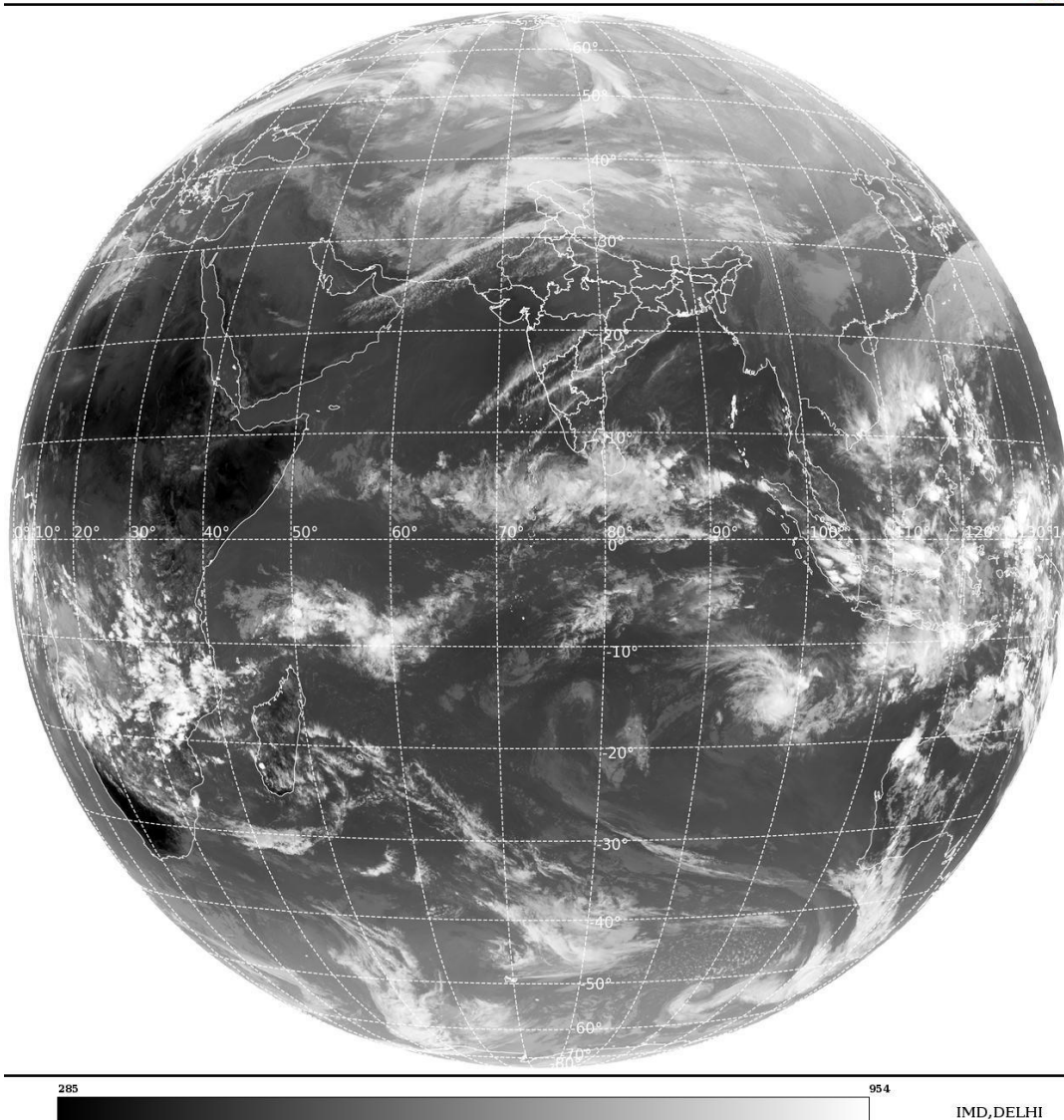
**BAY OF BENGAL & ANDAMAN SEA:-**

**SCT LOW/MED CLOUDS WITH EMBDD MOD TO INT CONVTN OVER SOUTH BAY ADJ EQUATORIAL INDIAN OCEAN (.) SCT LOW/MED CLOUDS WITH EMBDD ISOL WK TO MOD CONVTN OVER WC BAY & ANDAMAN SEA (.)**

**CLOUDS DESCRIPTION OUTSIDE INDIA:-**

SAT : INSAT-3DR IMG  
Thermal Infrared1 Count 10.8 um  
L1B FULL DISK

02-01-2025/(1145 to 1212) GMT  
02-01-2025/(1715 to 1742) IST



**SCT LOW/MED CLOUDS WITH EMBDD MOD TO INT CONVTN OVER SRI LANKA MALDIVES PAK TIBET CHINA YELLOW SEA EAST CHINA SEA TAIWAN VIETNAM SUMATRA STR OF MALACCA MALAYSIA BORNEO SOUTH CHINA SEA JAVA ILS & SEA CELEBES ILS & SEA PHILIPPINES SULU SEA MADAGASCAR MOZAMBIQUE CHANNEL AND OVER INDIAN OCEAN BET LAT 5.0N TO 30.0S LONG 40.0E TO 120.0E (.)**

**TOO 02/2130 EF=**

**NNNN**

**LEGEND:-**

|               |              |   |
|---------------|--------------|---|
| <b>REGION</b> | <b>NORTH</b> | <b>J&amp;K HP PJB HARY DLH UP UTRKND</b>                  |
|               | <b>EAST</b>  | <b>BHR JHRKND CHTGH ORS WB<br/>SKM NORTH- EAST STATES</b> |

|   |                        |  |
|---|------------------------|--|
|   | <b>WEST</b>            | <b>RAJ MP GUJ MAHA GOA</b>                                       |
|   | <b>SOUTH</b>           | <b>TLNGN AP KRNTK KER TN LKSDP<br/>ANDAMAN &amp; NICOBAR ILS</b> |
| <b>CLOUD DISTRIBUTION</b>   | <b>ISOL</b>            | <b>ISOLATED (LESS THAN 25%)</b>                                  |
|   | <b>SCT</b>             | <b>SCATTERED (25 TO 50%)</b>                                     |
|   | <b>BKN</b>             | <b>BROKEN (51 TO 75%)</b>  |
|   | <b>SLD</b>             | <b>SOLID (GREATER THAN 75%)</b>                                  |
| <b>CLOUDS TOP TEMPERATURE</b>   | <b>CTT</b>             | <b>CLOUD TOP TEMPERATURE</b>                                     |
| <b>CONVECTION</b>   | <b>WK CONVTN</b>       | <b>WEAK CONVECTION<br/>(CTT GREATER THAN -25°C)</b>              |
|   | <b>MOD CONVTN</b>      | <b>MODERATE CONVECTION<br/>(CTT BETWEEN -25°C TO -40°C)</b>      |
|   | <b>INT CONVTN</b>      | <b>INTENSE CONVECTION<br/>(CTT BETWEEN -41°C TO -70°C)</b>       |
|   | <b>V INT CONVTN</b>    | <b>VERY INTENSE CONVECTION<br/>(CTT LESS THAN -70°C)</b>         |
| <b>METEOROLOGICAL<br/>SUB- DIVISIONS,<br/>STATES &amp; UNION<br/>TERITORIES</b> | <b>ARUPR</b>           | <b>ARUNACHAL PRADESH</b>   |
|   | <b>BHR</b>             | <b>BIHAR</b>   |
|   | <b>CHTGH</b>           | <b>CHHATTISGARH</b>  |
|   | <b>COTL AP</b>         | <b>COASTAL ANDHRA PRADESH</b>                                    |
|   | <b>COTL KRNTK</b>      | <b>COASTAL KARNATAKA</b>   |
|   | <b>COTL ORS</b>        | <b>COASTAL ORISSA</b>  |
|   | <b>GUJ</b>             | <b>GUJARAT</b>   |
|   | <b>GWB</b>             | <b>GANGETIC WEST BENGAL</b>                                      |
|   | <b>HARY</b>            | <b>HARYANA</b>   |
|   | <b>DLH</b>             | <b>DELHI</b>   |
|   | <b>HP</b>              | <b>HIMACHAL PRADESH</b>  |
|   | <b>J&amp;K</b>         | <b>JAMMU AND KASHMIR</b>   |
|   | <b>JHRKND</b>          | <b>JHARKHAND</b>   |
|   | <b>KER</b>             | <b>KERALA</b>  |
|   | <b>KKN</b>             | <b>KONKAN</b>  |
|   | <b>LKSDP</b>           | <b>LAKSHADWEEP</b>   |
|   | <b>M MAHA</b>          | <b>MADHYA MAHARASHTRA</b>  |
|   | <b>MAHA</b>            | <b>MAHARASHTRA</b>   |
|   | <b>MANI</b>            | <b>MANIPUR</b>   |
|   | <b>MEGHA</b>           | <b>MEGHALAYA</b>   |
|   | <b>MIZO</b>            | <b>MIZORAM</b>   |
|   | <b>MP</b>              | <b>MADHYA PRADESH</b>  |
|   | <b>MRTHWD</b>          | <b>MARATHWADA</b>  |
|   | <b>NAGA</b>            | <b>NAGALAND</b>  |
|   | <b>N COTL AP</b>       | <b>NORTH COASTAL ANDHRA<br/>PRADESH</b>                          |
|   | <b>NIK</b>             | <b>NORTH INTERIOR KARNATAKA</b>                                  |
|   | <b>ORS</b>             | <b>ORISSA</b>  |
|   | <b>PJB</b>             | <b>PUNJAB</b>  |
|   | <b>RAJ</b>             | <b>RAJASTHAN</b>   |
|   | <b>RYLSM</b>           | <b>RAYALASEEMA</b>   |
|   | <b>SAU &amp; KUTCH</b> | <b>SAURASHTRA &amp; KUTCH</b>                                    |

|                      |               |                                  |
|----------------------|---------------|----------------------------------|
|                      | <b>SHWB</b>   | <b>SUB-HIMALAYAN WEST BENGAL</b> |
|                      | <b>SIK</b>    | <b>SOUTH INTERIOR KARNATAKA</b>  |
|                      | <b>SKM</b>    | <b>SIKKIM</b>                    |
|                      | <b>TLNGN</b>  | <b>TELANGANA</b>                 |
|                      | <b>TN</b>     | <b>TAMIL NADU</b>                |
|                      | <b>TRP</b>    | <b>TRIPURA</b>                   |
|                      | <b>UP</b>     | <b>UTTAR PRADESH</b>             |
|                      | <b>UTRKND</b> | <b>UTTARAKHAND</b>               |
|                      | <b>VID</b>    | <b>VIDHARBHA</b>                 |
|                      | <b>SHWB</b>   | <b>SUB HIMALAYAN WEST BENGAL</b> |
|                      | <b>GWB</b>    | <b>GANGETIC WEST BENGAL</b>      |
|                      | <b>ARSEA</b>  | <b>ARABIAN SEA</b>               |
|                      | <b>ILS</b>    | <b>ISLANDS</b>                   |
| <b>MISCELLANEOUS</b> | <b>ASSW</b>   | <b>IN ASSOCIATION WITH</b>       |
|                      | <b>ASSTD</b>  | <b>ASSOCIATED</b>                |
|                      | <b>LLC</b>    | <b>LOW LEVEL CIRCULATION</b>     |
|                      | <b>EMBDD</b>  | <b>EMBEDDED</b>                  |
|                      | <b>N/HOOD</b> | <b>NEIGHBOURHOOD</b>             |
|                      | <b>EXT</b>    | <b>EXTREME</b>                   |