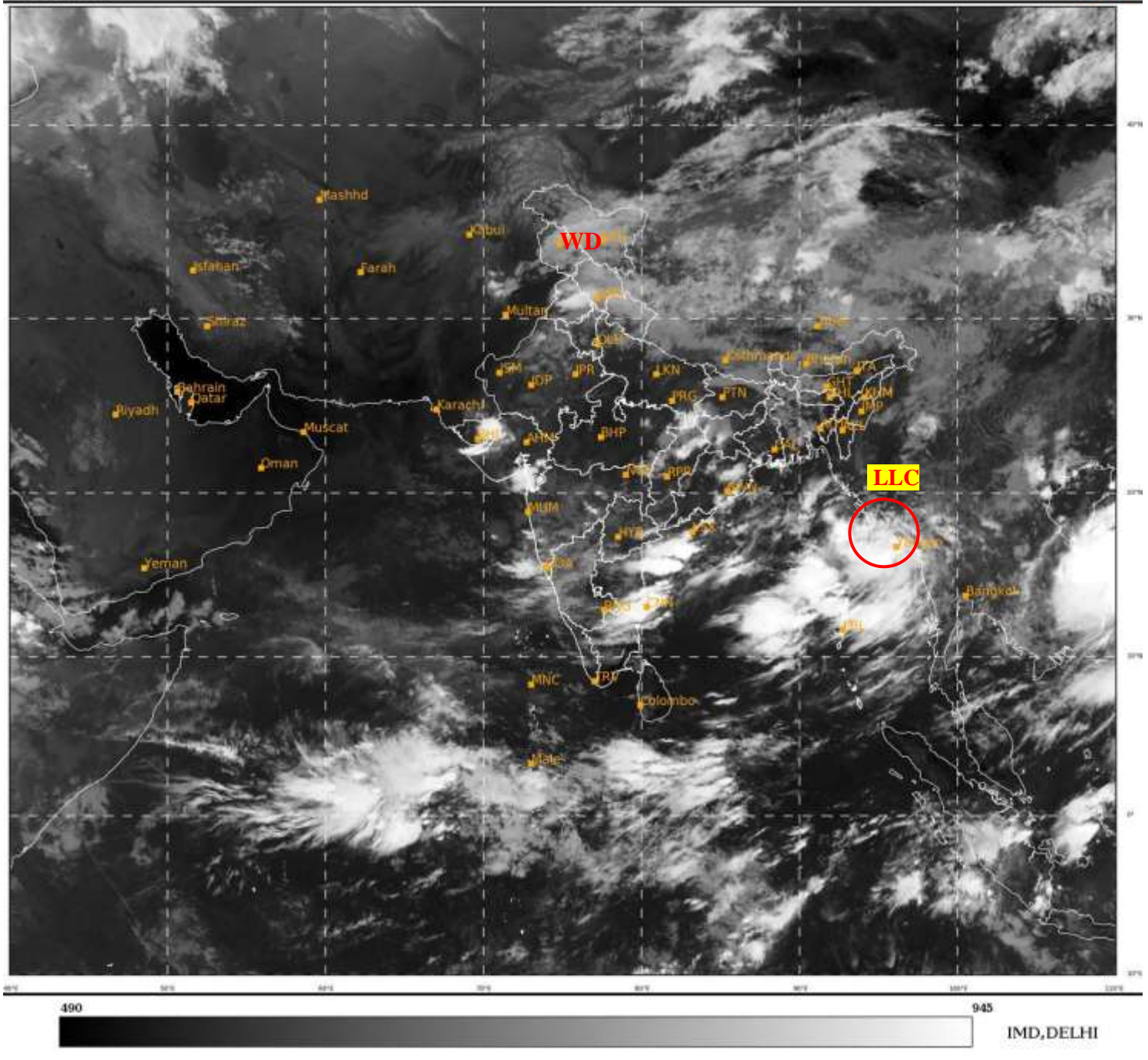




**SATELLITE BULLETIN BASED ON SATELLITE**  
**IMAGERIES AND PRODUCTS**  
**23.09.2021 TIME 0300 UTC**

SAT : INSAT-3D IMG  
IMG\_TIR1 10.8 um  
LIC Mercator

23-09-2021/(0300 to 0326) GMT  
23-09-2021/(0830 to 0856) IST



TCIN50 DEMS 230300

SATELLITE BULLETIN BASED ON INSAT-3D PIC OF 230300 UTC (.)

REGION COVERED BETWEEN LAT 50.0°N TO 30.0°S AND LONG 40.0°E TO 125.0°E (.)

**SALIENT FEATURES:-**

**LLC OVER EXTREME SOUTH MYANMAR & N/HOOD:-**

BKN LOW/MED CLOUDS WITH EMBDD INT TO V INT CONVTN OVER EXTREME SOUTH MYANMAR & N/HOOD IN ASSW LOW LEVEL CIRCULATION (LLC) OVER THE AREA (.) MINIMUM CTT MINUS 93 DEG CEL (.)

**WESTERN DISTURBANCE (WD):-**

SCT MULTILAYERED CLOUDS OVER N PAK LADAKH J&K HP PJB UTRKND N TIBET ADJ CHINA IN ASSW WD OVER THE AREA (.)



INSAT-3D 23-SEP-2021 03:00 WV IMG

WATER VAPOUR WIND

(1Kt = 0.5 m/s)

10 Kt

15 Kt

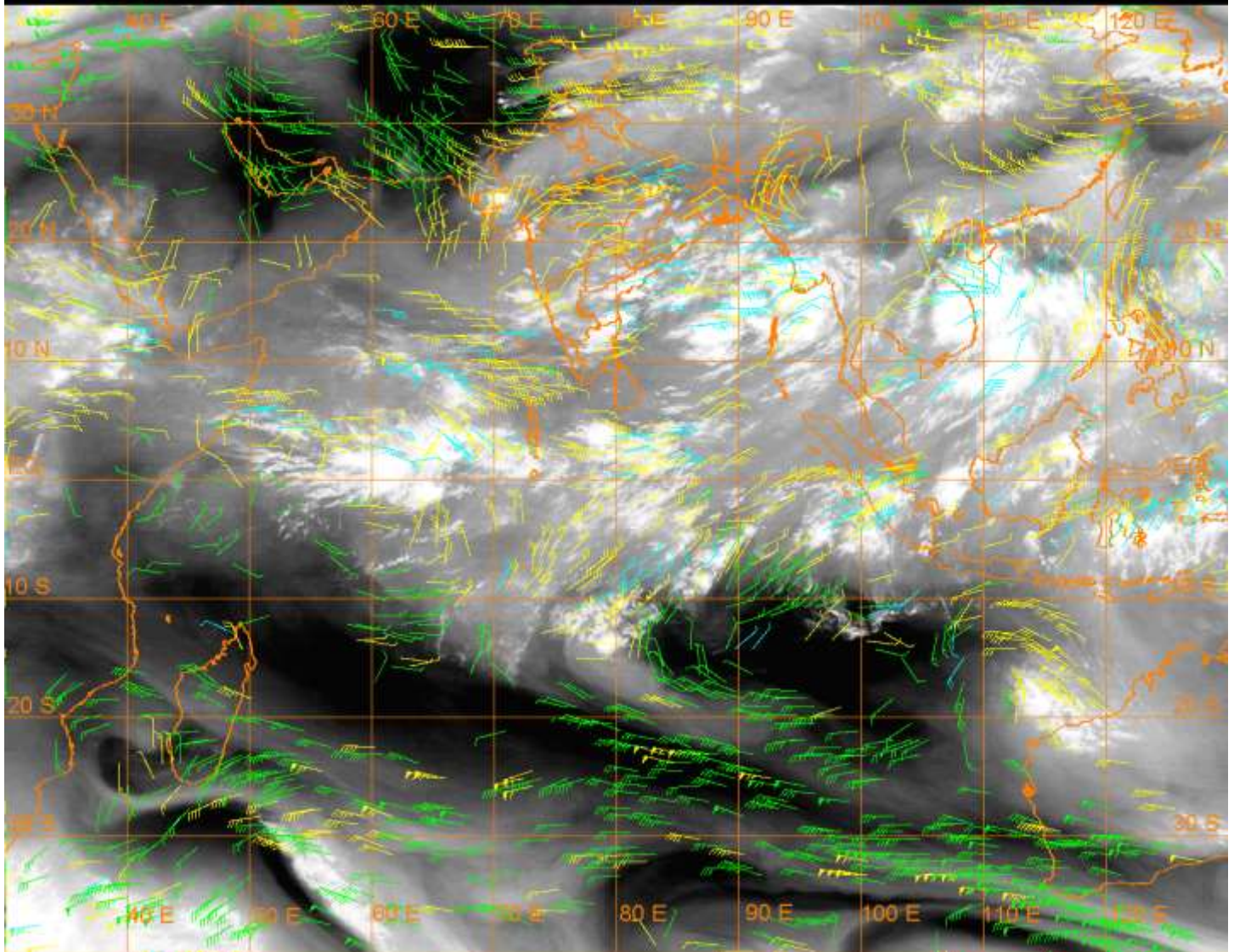
20 Kt

50 Kt

100-250 hPa

251-350 hPa

351-500 hPa



### CLOUDS DESCRIPTION WITHIN INDIA:-

#### NORTH:-

SCT LOW/MED CLOUDS WITH EMBDD MOD TO INT CONVTN OVER HP PJB EXT SE UP AND WK TO MOD CONVTN OVER LADAKH J&K UTRKND HARY EXT NW UP (.) SCT LOW/MED CLOUDS OVER DLH REST UP (.)

#### EAST:-

SCT LOW/MED CLOUDS WITH EMBDD MOD TO INT CONVTN OVER N CHTGH E ORS W JHRKND SW BHR SW GWB (.) SCT LOW/MED CLOUDS WITH EMBDD ISOL WK TO MOD CONVTN OVER S CHTGH W ORS E JHRKND REST BHR REST GWB SHWB SKM ARUPR W ASSAM MEGHA & BD (.) SCT LOW/MED CLOUDS OVER REST NE STATES (.)

#### WEST:-

SCT LOW/MED CLOUDS WITH EMBDD MOD TO INT CONVTN OVER MRTHWD NW & SE GUJ GULF OF KUTCH GULF OF CAMBAY (.) SCT LOW/MED CLOUDS WITH EMBDD ISOL WK TO MOD CONVTN OVER NW RAJ E MP REST MAHA & GOA (.) SCT LOW/MED CLOUDS OVER REST RAJ REST GUJ W MP (.)

#### SOUTH:-

SCT LOW/MED CLOUDS WITH EMBDD INT TO V INT CONVTN OVER COTL AP NORTH TN & ANDAMAN ILS (.) SCT LOW/MED CLOUDS WITH EMBDD MOD TO INT CONVTN OVER S TLNGN RYLSM AND ISOL WK TO MOD CONVTN OVER N TLNGN KRNTK KER (.) SCT LOW/MED CLOUDS OVER S TN LKSDP & NICOBAR ILS (.)

#### ARABIAN SEA:-

SCT LOW/MED CLOUDS WITH EMBDD MOD TO INT CONVTN OVER GULF OF KUTCH GULF OF CAMBAY EC ARSEA OFF SOUTH MAHA-KRNTK COASTS (.)

**BAY OF BENGAL & ANDAMAN SEA:-**

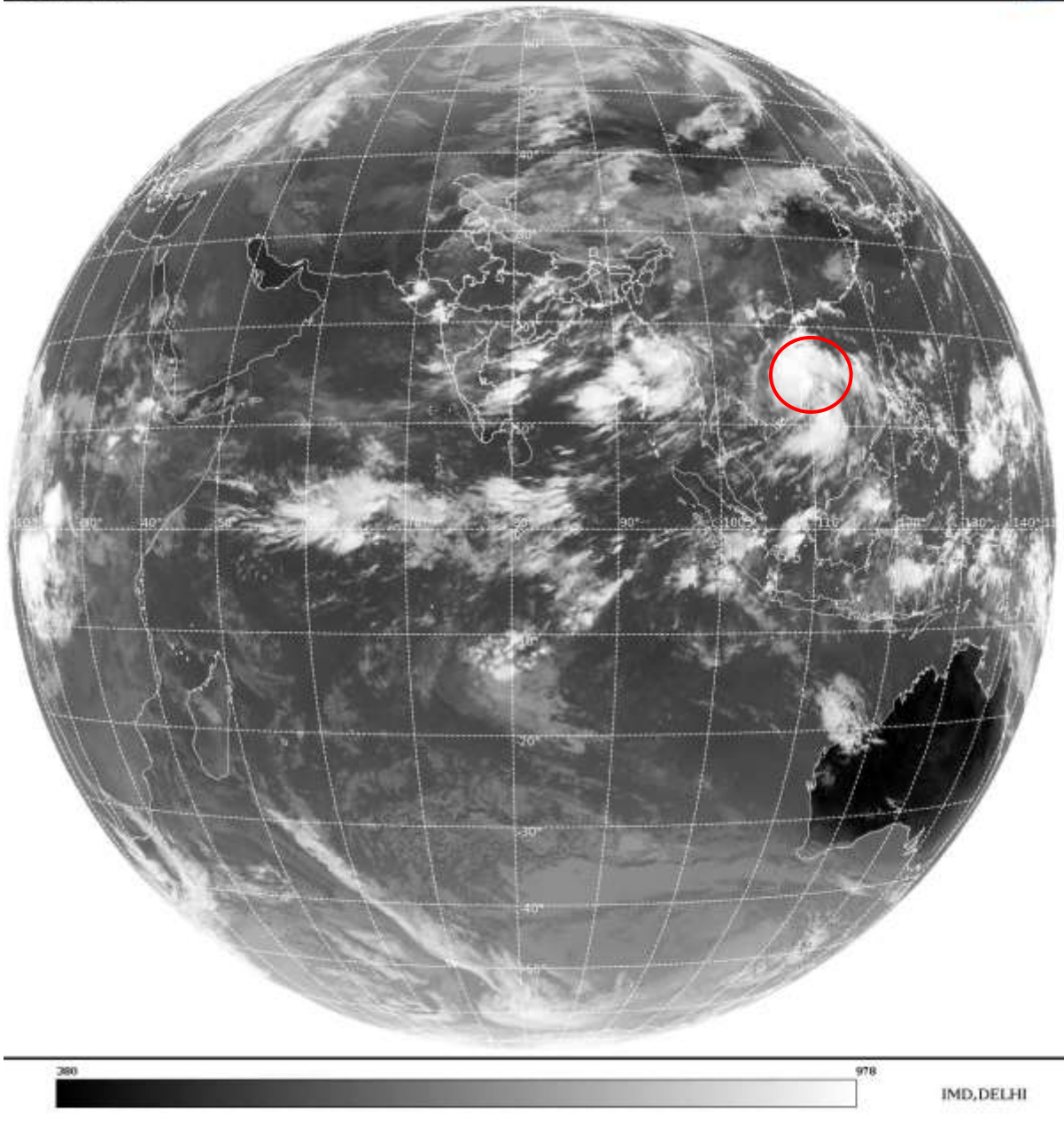
**BKN LOW/MED CLOUDS WITH EMBDD INT TO V INT CONVTN OVER WC BAY OFF AP ADJ N TN COASTS EC ADJ SE BAY N ANDAMAN SEA GULF OF MARTABAN ADJ S MYANMAR ARAKAN COAST (MINIMUM CTT MINUS 93 DEG CEL) (.)**

**SCT LOW/MED CLOUDS WITH EMBDD MOD TO INT CONVTN OVER REST CENTRAL & N BAY SOUTH ANDAMAN SEA (.)**

**CLOUDS DESCRIPTION OUTSIDE INDIA:-**

SAT : INSAT-3D IMG  
Thermal Infrared1 Count 10.8 um  
LIB FULL DISK

23-09-2021/(0300 to 0326) GMT  
23-09-2021/(0830 to 0856) IST



**VORTEX OVER SOUTH CHINA SEA ADJ CENTRAL VIETNAM & N/HOOD:-**

**VORTEX OVER S CHINA SEA ADJ C VIETNAM & N/HOOD CENTERED NEAR 14.5N/110.8E (.) INTENSITY T1.5 (.) ASSTD BKN LOW/MED CLOUDS WITH EMBDD INT TO V INT CONVTN OVER AREA BET LAT 12.0N TO 18.0N AND LONG 107.0E TO 113.0E & S VIETNAM (.)**

**SCT LOW/MED CLOUDS WITH EMBDD MOD TO INT CONVTN OVER S MALDIVES TIBET CHINA MYANMAR THAILAND GULF OF THAILAND CAMBODIA LAOS VIETNAM HAINAN S SUMATRA ADJ W COAST BORNEO SOUTH CHINA SEA CELEBES ILS PHILIPPINES AND OVER THE INDIAN OCEAN BET LAT 5.0N TO 2.0S LONG 50.0E TO 90.0E AND BET LAT 2.0S TO 15.0S LONG 76.0E TO 90.0E (.)**

**TOO 23/1030EF=**

**NNNN**

**LEGEND:-**

<b>REGION</b>	<b>NORTH</b>	<b>J&amp;K HP PJB HARY DLH UP UTRKND</b>
	<b>EAST</b>	<b>BHR JHRKND CHTGH ORS WB SKMNORTH- EAST STATES</b>
	<b>WEST</b>	<b>RAJ MP GUJ MAHA GOA</b>
	<b>SOUTH</b>	<b>TLNGN AP KRNTK KER TN LKSDP ANDAMAN &amp; NICOBAR ILS</b>

<b>CLOUD DISTRIBUTION</b>	<b>ISOL</b>	<b>ISOLATED (LESS THAN 25%)</b>	
	<b>SCT</b>	<b>SCATTERED (25 TO 50%)</b>	
	<b>BKN</b>	<b>BROKEN (51 TO 75%)</b>	
	<b>SLD</b>	<b>SOLID (GREATER THAN 75%)</b>	
<b>CLOUDS TOP TEMPERATURE</b>	<b>CTT</b>	<b>CLOUD TOP TEMPERATURE</b>	
<b>CONVECTION</b>	<b>WK CONVTN</b>	<b>WEAK CONVECTION (CTT GREATER THAN -25°C)</b>	
	<b>MOD CONVTN</b>	<b>MODERATE CONVECTION (CTT BETWEEN -25°C TO -40°C)</b>	
	<b>INT CONVTN</b>	<b>INTENSE CONVECTION (CTT BETWEEN -41°C TO -70°C)</b>	
	<b>V INT CONVTN</b>	<b>VERY INTENSE CONVECTION (CTT LESS THAN -70°C)</b>	
<b>METEOROLOGICAL SUB-DIVISIONS, STATES &amp; UNION TERRITORIES</b>	<b>ARUPR</b>	<b>ARUNACHAL PRADESH</b>	
	<b>BHR</b>	<b>BIHAR</b>	
	<b>CHTGH</b>	<b>CHHATTISGARH</b>	
	<b>COTL AP</b>	<b>COASTAL ANDHRA PRADESH</b>	
	<b>COTL KRNTK</b>	<b>COASTAL KARNATAKA</b>	
	<b>COTL ORS</b>	<b>COASTAL ORISSA</b>	
	<b>GUJ</b>	<b>GUJARAT</b>	
	<b>GWB</b>	<b>GANGETIC WEST BENGAL</b>	
	<b>HARY</b>	<b>HARYANA</b>	
	<b>DLH</b>	<b>DELHI</b>	
	<b>HP</b>	<b>HIMACHAL PRADESH</b>	
	<b>J&amp;K</b>	<b>JAMMU AND KASHMIR</b>	
	<b>JHRKND</b>	<b>JHARKHAND</b>	
	<b>KER</b>	<b>KERALA</b>	
	<b>KKN</b>	<b>KONKAN</b>	
	<b>LKSDP</b>	<b>LAKSHADWEEP</b>	
	<b>M MAHA</b>	<b>MADHYA MAHARASHTRA</b>	
	<b>MAHA</b>	<b>MAHARASHTRA</b>	
	<b>MANI</b>	<b>MANIPUR</b>	
	<b>MEGHA</b>	<b>MEGHALAYA</b>	
	<b>MIZO</b>	<b>MIZORAM</b>	
	<b>MP</b>	<b>MADHYA PRADESH</b>	
		<b>MRTHWD</b>	<b>MARATHWADA</b>
		<b>NAGA</b>	<b>NAGALAND</b>
<b>N COTL AP</b>		<b>NORTH COASTAL ANDHRA PRADESH</b>	
<b>NIK</b>		<b>NORTH INTERIOR KARNATAKA</b>	

	<b>ORS</b>	<b>ORISSA</b>
	<b>PJB</b>	<b>PUNJAB</b>
	<b>RAJ</b>	<b>RAJASTHAN</b>
	<b>RYLSM</b>	<b>RAYALASEEMA</b>
	<b>SAU &amp; KUTCH</b>	<b>SAURASHTRA &amp; KUTCH</b>
	<b>SHWB</b>	<b>SUB-HIMALAYAN WEST BENGAL</b>
	<b>SIK</b>	<b>SOUTH INTERIOR KARNATAKA</b>
	<b>SKM</b>	<b>SIKKIM</b>
	<b>TLNGN</b>	<b>TELANGANA</b>
	<b>TN</b>	<b>TAMIL NADU</b>
	<b>TRP</b>	<b>TRIPURA</b>
	<b>UP</b>	<b>UTTAR PRADESH</b>
	<b>UTRKN</b>	<b>UTTARAKHAND</b>
	<b>VID</b>	<b>VIDHARBHA</b>
	<b>SHWB</b>	<b>SUB HIMALAYAN WEST BENGAL</b>
	<b>GWB</b>	<b>GANGETIC WEST BENGAL</b>
	<b>ARSEA</b>	<b>ARABIAN SEA</b>
	<b>ILS</b>	<b>ISLANDS</b>
<b>MISCELLANEOUS</b>	<b>ASSW</b>	<b>IN ASSOCIATION WITH</b>
	<b>ASSTD</b>	<b>ASSOCIATED</b>
	<b>LLC</b>	<b>LOW LEVEL CIRCULATION</b>
	<b>EMBDD</b>	<b>EMBEDDED</b>
	<b>N/HOOD</b>	<b>NEIGHBOURHOOD</b>
	<b>EXT</b>	<b>EXTREME</b>