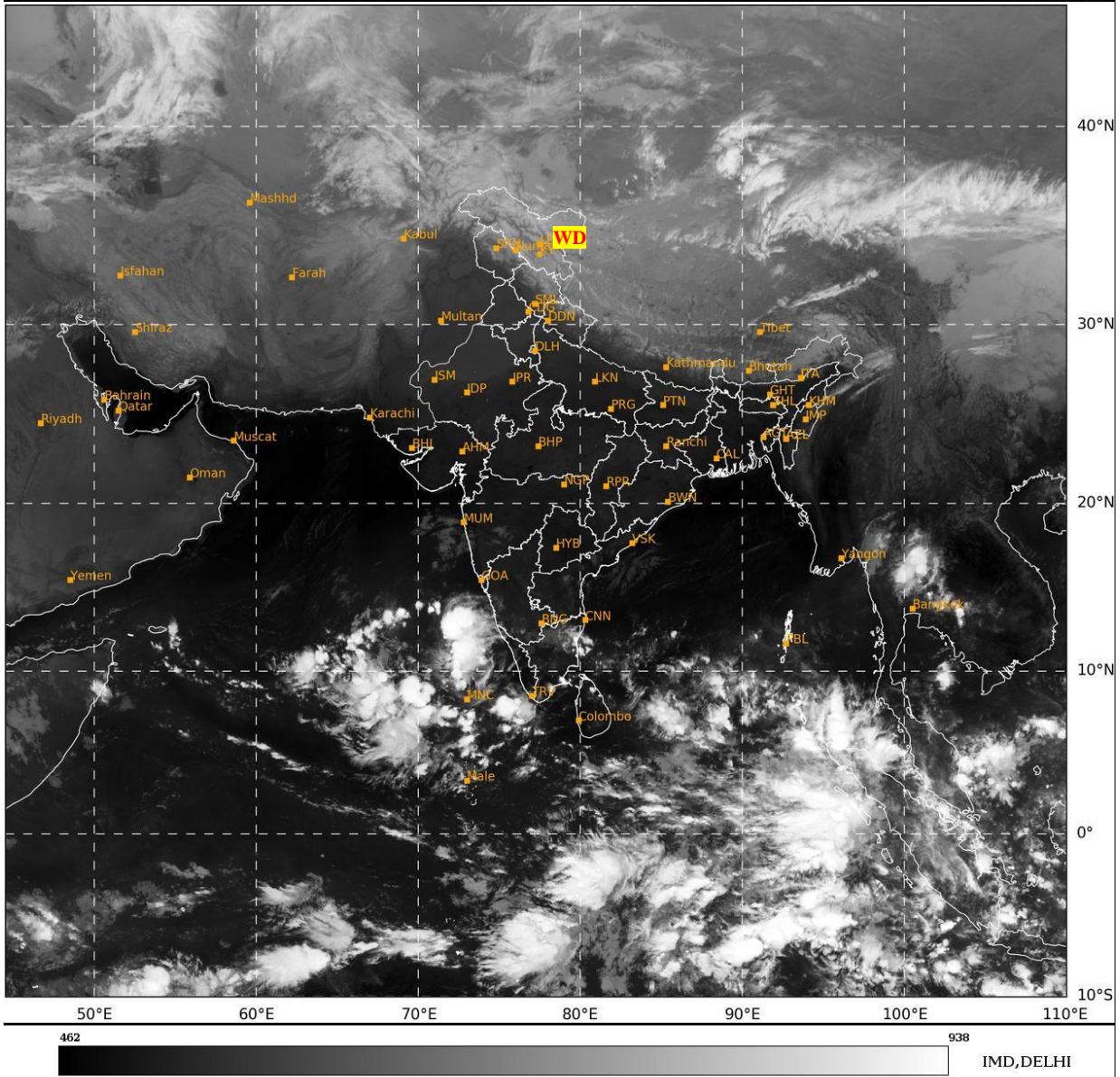




**SATELLITE BULLETIN BASED ON SATELLITE  
IMAGERIES AND PRODUCTS**  
**17.11.2024 TIME 0300 UTC**

SAT : INSAT-3DR IMG  
IMG\_TIR1 10.8 um  
LIC Mercator

17-11-2024/(0245 to 0312) GMT  
17-11-2024/(0815 to 0842) IST



TCIN50 DEMS 170300

SATELLITE BULLETIN BASED ON INSAT-3DR PIC OF 170245 UTC (.)

REGION COVERED BETWEEN LAT 50.0°N TO 35.0°S AND LONG 40.0°E TO 125.0°E (.)

**SALIENT FEATURES:-**

**WESTERN DISTURBANCE:-**

SCT MULTILAYERED CLOUDS OVER E LADAKH TIBET ADJ CHINA IN ASSW **WD** OVER THE AREA (.)

**CONVECTIVE / THUNDERSTORM ACTIVITY:-**

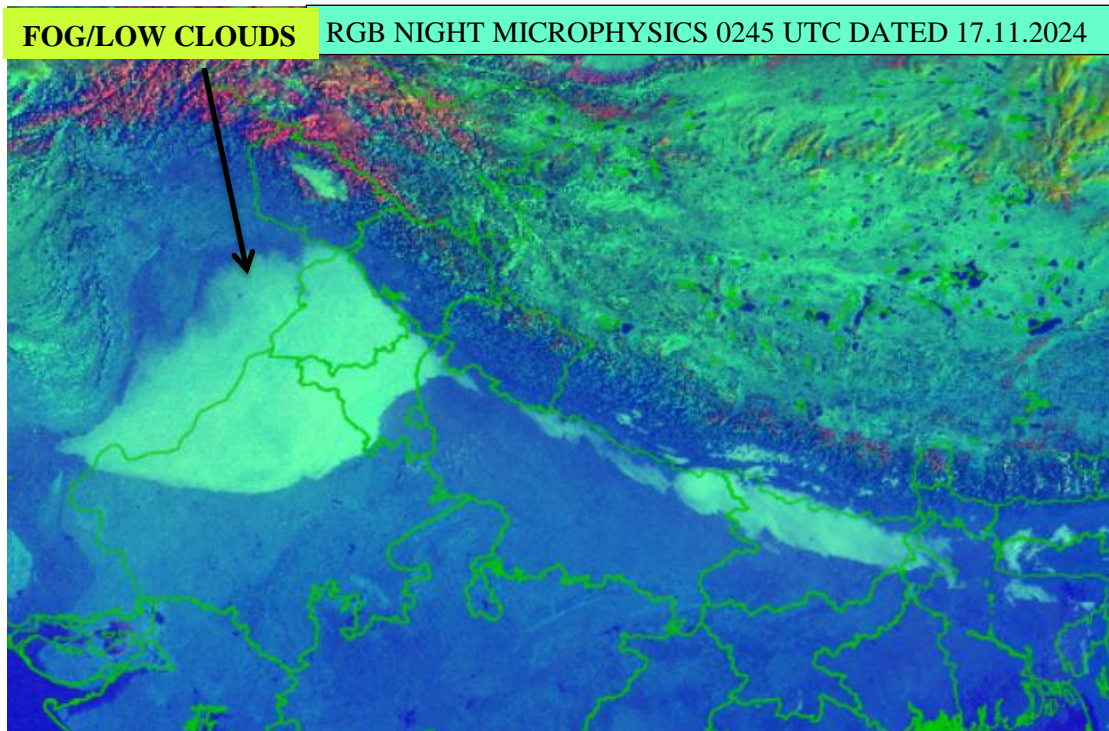
INTENSE CONVECTIVE / THUNDERSTORM ACTIVITY OBSERVED OVER LKSDP ILS AREA (MINIMUM CTT **MINUS 70 DEG CEL**) (.)

MODERATE TO INTENSE CONVECTIVE / THUNDERSTORM ACTIVITY OBSERVED OVER TN SOUTH KER (MINIMUM CTT **MINUS 50-70 DEG CEL**) (.)

**FOG / LOW CLOUDS :-**

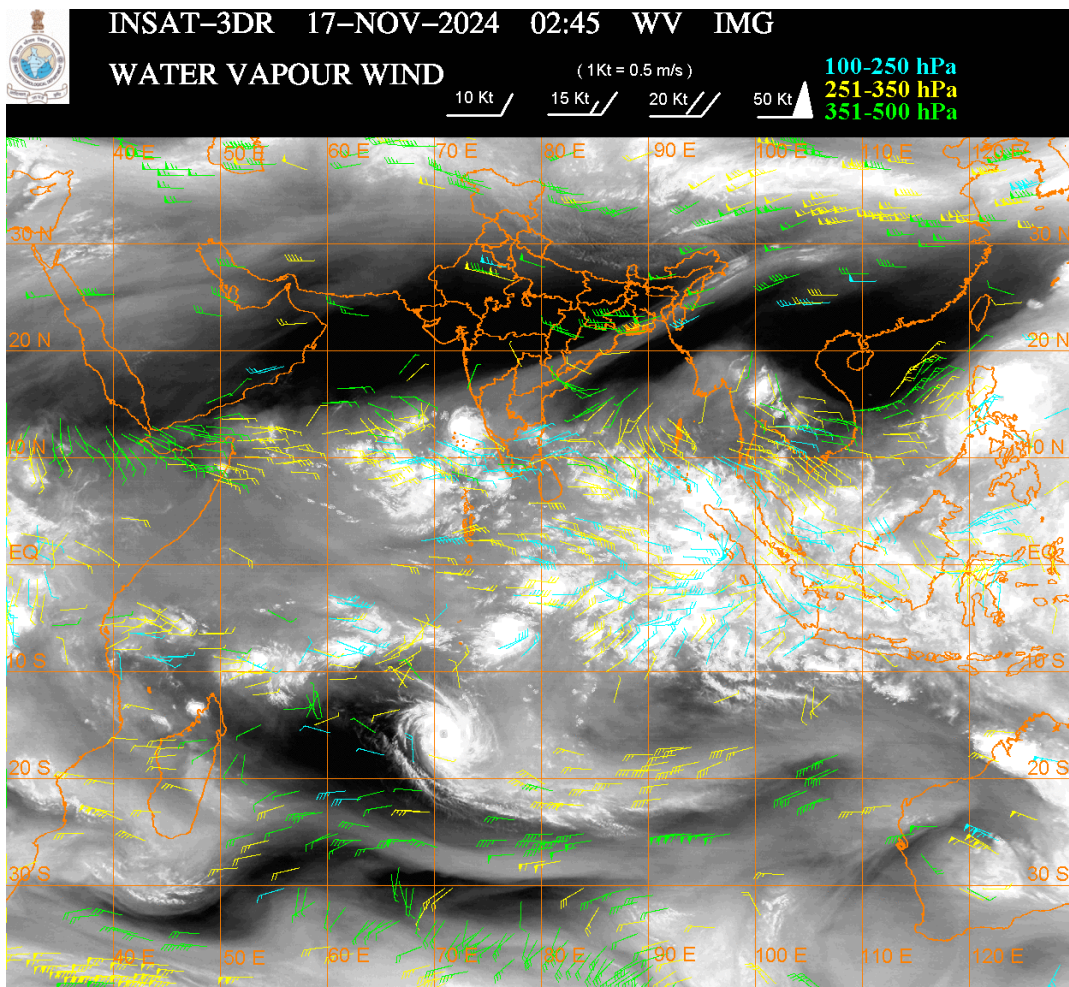
RGB COMPOSITE DAY MICROPHYSICS IMAGERY OF INSAT-3DR AT 0245 UTC INDICATES SCT FOG / LOW CLOUDS OVER EC PAK PJB NW RAJ W HARY N UP N BHR SOUTH SHWB W

MEGHA (.)



**JET STREAM:-**

**JET STREAM OF ORDER UPTO 120 KTS OBSERVED OVER NORTH AND CENTRAL INDIA NORTH OF LAT 20.0N (.)**



**CLOUDS DESCRIPTION WITHIN INDIA:-**

**NORTH:-**

**SCT LOW/MED CLOUDS WITH EMBDD ISOL WK TO MOD CONVTN OVER LADAKH (.) SCT LOW/MED CLOUDS OVER J&K HP UTRKND (.)**

**EAST:-**

**SCT LOW/MED CLOUDS WITH EMBDD ISOL WK CONVTN OVER SKM ARUPR (.) SCT LOW/MED CLOUDS OVER SHWB REST NE STATES (.)**

**WEST:-**

ISOL TO SCT LOW/MED CLOUDS OVER MAHA & GOA (.)

SOUTH:-

SCT LOW/MED CLOUDS WITH EMBDD INT CONVTN OVER LKSDP ILS (.) SCT LOW/MED CLOUDS WITH EMBDD MOD TO INT CONVTN OVER E TN AND WK TO MOD CONVTN OVER COTL KRNTK EXT PARTS OF KER NICOBAR ILS (.) SCT LOW/MED CLOUDS OVER REST KRNTK TLNGN RYLSM COTL AP REST KER W TN ANDAMAN ILS (.)

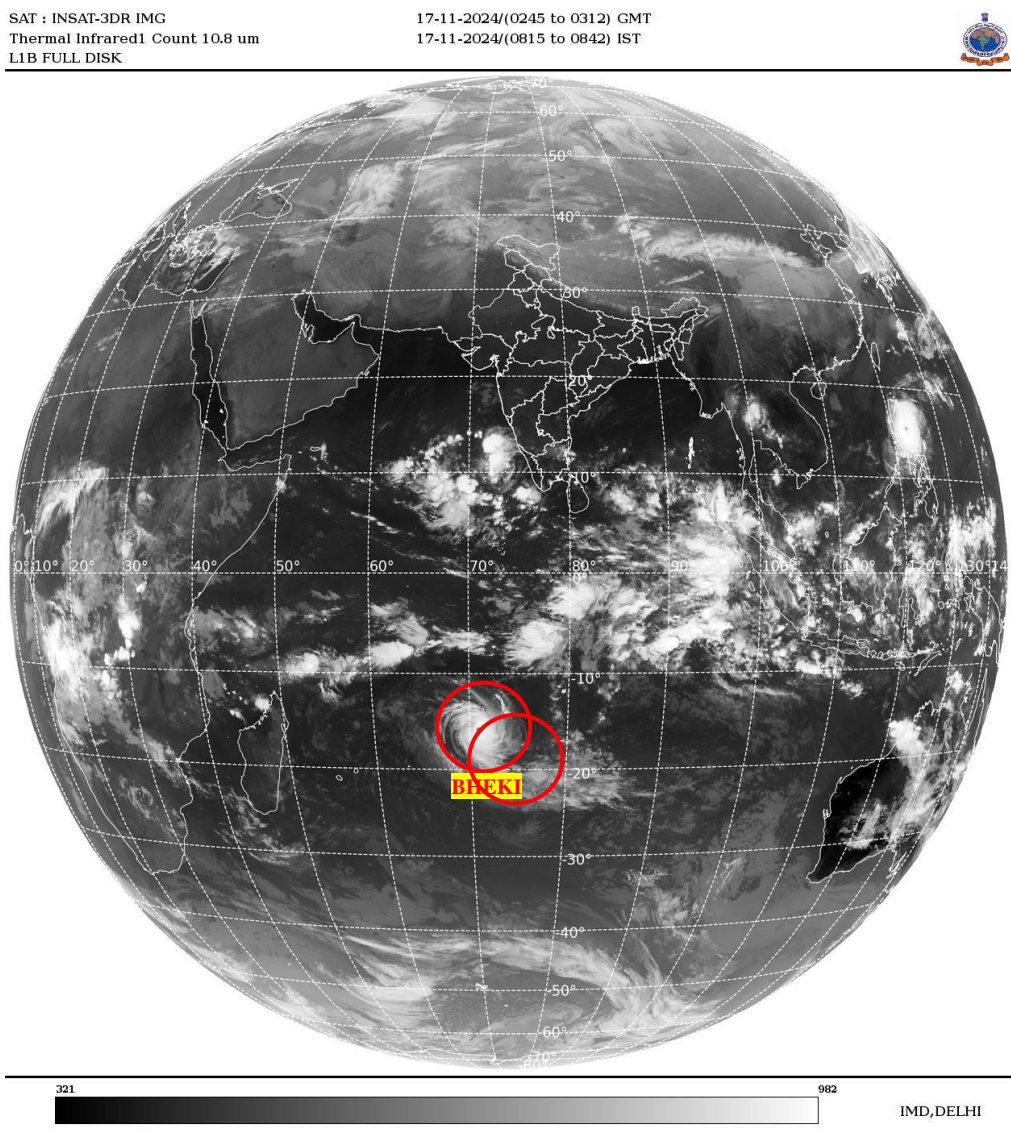
ARABIAN SEA:-

SCT LOW/MED CLOUDS WITH EMBDD INT TO V INTCONVTN OVER EC & SE ARSEA LKSDP ILS MALDIVES & COMORIN AREA (.) SCT LOW/MED CLOUDS WITH EMBDD MOD TO INT CONVTN OVER WC ADJ SW ARSEA (.)

BAY OF BENGAL & ANDAMAN SEA:-

SCT LOW/MED CLOUDS WITH EMBDD INT TO V INT CONVTN OVER S ANDAMAN SEA (.) SCT LOW/MED CLOUDS WITH EMBDD MOD TO INT CONVTN OVER SOUTH BAY (.)

CLOUDS DESCRIPTION OUTSIDE INDIA:-



VORTEX (BHEKI) OVER SOUTH INDIAN OCEAN:-

VORTEX (BHEKI) OVER SOUTH INDIAN OCEAN (AREA E80) CENTERED NEAR 15.4S / 71.1E (.) INTENSITY T5.5/5.5 (.) MAXIMUM SUSTAUNED WINDS 90-119 KTS (.) ASSTD BKN LOW/MED CLOUDS WITH EMBDD INT TO V INT CONVTN OVER AREA BET LAT 13.0S TO 20.0S LONG 67.0E TO 74.0E (.)

VORTEX (MAN-YI) OVER PHILLIPINES SEA :-

VORTEX (MAN-YI) OVER PHILLIPINES SEA & N/HOOD CENTERED NEAR 15.2S / 122.2E (.) INTENSITY T6.5/6.5 (.) MAXIMUM SUSTAUNED WINDS 119-127 KTS (.) ASSTD BKN LOW/MED CLOUDS WITH EMBDD INT TO V INT CONVTN OVER AREA BET LAT 11.0N TO 18.0N LONG 119.0E TO 127.0E (.)

SCT LOW/MED CLOUDS WITH EMBDD MOD TO INT CONVTN OVER PALK STR GULF OF MANNAR MALDIVES TIBET CHINA YELLOW SEA EAST CHINA SEA SUMATRA STR OF MALACCA MALAYSIA BORNEO SOUTH CHINA SEA JAVA ILS & SEA CELEBES ILS & SEA PHILIPPINES SULU SEA MOZAMBIQUE CHANNEL MADAGASCAR AND OVER INDIAN OCEAN BET LAT 5.0N TO 23.0S LONG 50.0E TO 110.0E (.)

TOO 17/0940 HRS IST=

NNNN

**LEGEND:-**

|  |                     |  |
|--|---------------------|--|
| <b>REGION</b>  | <b>NORTH</b>        | <b>J&amp;K HP PJB HARY DLH UP UTRKND</b>                         |
|  | <b>EAST</b>         | <b>BHR JHRKND CHTGH ORS WB<br/>SKM NORTH- EAST STATES</b>        |
|  | <b>WEST</b>         | <b>RAJ MP GUJ MAHA GOA</b>                                       |
|  | <b>SOUTH</b>        | <b>TLNGN AP KRNTK KER TN LKSDP<br/>ANDAMAN &amp; NICOBAR ILS</b> |
| <b>CLOUD DISTRIBUTION</b>  | <b>ISOL</b>         | <b>ISOLATED (LESS THAN 25%)</b>                                  |
|  | <b>SCT</b>          | <b>SCATTERED (25 TO 50%)</b>                                     |
|  | <b>BKN</b>          | <b>BROKEN (51 TO 75%)</b>  |
|  | <b>SLD</b>          | <b>SOLID (GREATER THAN 75%)</b>                                  |
| <b>CLOUDS TOP TEMPERATURE</b>  | <b>CTT</b>          | <b>CLOUD TOP TEMPERATURE</b>                                     |
| <b>CONVECTION</b>  | <b>WK CONVTN</b>    | <b>WEAK CONVECTION<br/>(CTT GREATER THAN -25°C)</b>              |
|  | <b>MOD CONVTN</b>   | <b>MODERATE CONVECTION<br/>(CTT BETWEEN -25°C TO -40°C)</b>      |
|  | <b>INT CONVTN</b>   | <b>INTENSE CONVECTION<br/>(CTT BETWEEN -41°C TO -70°C)</b>       |
|  | <b>V INT CONVTN</b> | <b>VERY INTENSE CONVECTION<br/>(CTT LESS THAN -70°C)</b>         |
| <b>METEOROLOGICAL SUB- DIVISIONS, STATES &amp; UNION TERRITORIES</b> | <b>ARUPR</b>        | <b>ARUNACHAL PRADESH</b>   |
|  | <b>BHR</b>          | <b>BIHAR</b>   |
|  | <b>CHTGH</b>        | <b>CHHATTISGARH</b>  |
|  | <b>COTL AP</b>      | <b>COASTAL ANDHRA PRADESH</b>                                    |
|  | <b>COTL KRNTK</b>   | <b>COASTAL KARNATAKA</b>   |
|  | <b>COTL ORS</b>     | <b>COASTAL ORISSA</b>  |
|  | <b>GUJ</b>          | <b>GUJARAT</b>   |
|  | <b>GWB</b>          | <b>GANGETIC WEST BENGAL</b>                                      |
|  | <b>HARY</b>         | <b>HARYANA</b>   |
|  | <b>DLH</b>          | <b>DELHI</b>   |
|  | <b>HP</b>           | <b>HIMACHAL PRADESH</b>  |
|  | <b>J&amp;K</b>      | <b>JAMMU AND KASHMIR</b>   |
|  | <b>JHRKND</b>       | <b>JHARKHAND</b>   |
|  | <b>KER</b>          | <b>KERALA</b>  |
|  | <b>KKN</b>          | <b>KONKAN</b>  |
|  | <b>LKSDP</b>        | <b>LAKSHADWEEP</b>   |
|  | <b>M MAHA</b>       | <b>MADHYA MAHARASHTRA</b>  |
| <b>MAHA</b>  | <b>MAHARASHTRA</b>  |  |
| <b>MANI</b>  | <b>MANIPUR</b>      |  |

|                      |                        |                                     |
|----------------------|------------------------|-------------------------------------|
|                      | <b>MEGHA</b>           | <b>MEGHALAYA</b>                    |
|                      | <b>MIZO</b>            | <b>MIZORAM</b>                      |
|                      | <b>MP</b>              | <b>MADHYA PRADESH</b>               |
|                      | <b>MRTHWD</b>          | <b>MARATHWADA</b>                   |
|                      | <b>NAGA</b>            | <b>NAGALAND</b>                     |
|                      | <b>N COTL AP</b>       | <b>NORTH COASTAL ANDHRA PRADESH</b> |
|                      | <b>NIK</b>             | <b>NORTH INTERIOR KARNATAKA</b>     |
|                      | <b>ORS</b>             | <b>ORISSA</b>                       |
|                      | <b>PJB</b>             | <b>PUNJAB</b>                       |
|                      | <b>RAJ</b>             | <b>RAJASTHAN</b>                    |
|                      | <b>RYLSM</b>           | <b>RAYALASEEMA</b>                  |
|                      | <b>SAU &amp; KUTCH</b> | <b>SAURASHTRA &amp; KUTCH</b>       |
|                      | <b>SHWB</b>            | <b>SUB-HIMALAYAN WEST BENGAL</b>    |
|                      | <b>SIK</b>             | <b>SOUTH INTERIOR KARNATAKA</b>     |
|                      | <b>SKM</b>             | <b>SIKKIM</b>                       |
|                      | <b>TLNGN</b>           | <b>TELANGANA</b>                    |
|                      | <b>TN</b>              | <b>TAMIL NADU</b>                   |
|                      | <b>TRP</b>             | <b>TRIPURA</b>                      |
|                      | <b>UP</b>              | <b>UTTAR PRADESH</b>                |
|                      | <b>UTRKND</b>          | <b>UTTARAKHAND</b>                  |
|                      | <b>VID</b>             | <b>VIDHARBHA</b>                    |
|                      | <b>SHWB</b>            | <b>SUB HIMALAYAN WEST BENGAL</b>    |
|                      | <b>GWB</b>             | <b>GANGETIC WEST BENGAL</b>         |
|                      | <b>ARSEA</b>           | <b>ARABIAN SEA</b>                  |
|                      | <b>ILS</b>             | <b>ISLANDS</b>                      |
| <b>MISCELLANEOUS</b> | <b>ASSW</b>            | <b>IN ASSOCIATION WITH</b>          |
|                      | <b>ASSTD</b>           | <b>ASSOCIATED</b>                   |
|                      | <b>LLC</b>             | <b>LOW LEVEL CIRCULATION</b>        |
|                      | <b>EMBDD</b>           | <b>EMBEDDED</b>                     |
|                      | <b>N/HOOD</b>          | <b>NEIGHBOURHOOD</b>                |
|                      | <b>EXT</b>             | <b>EXTREME</b>                      |