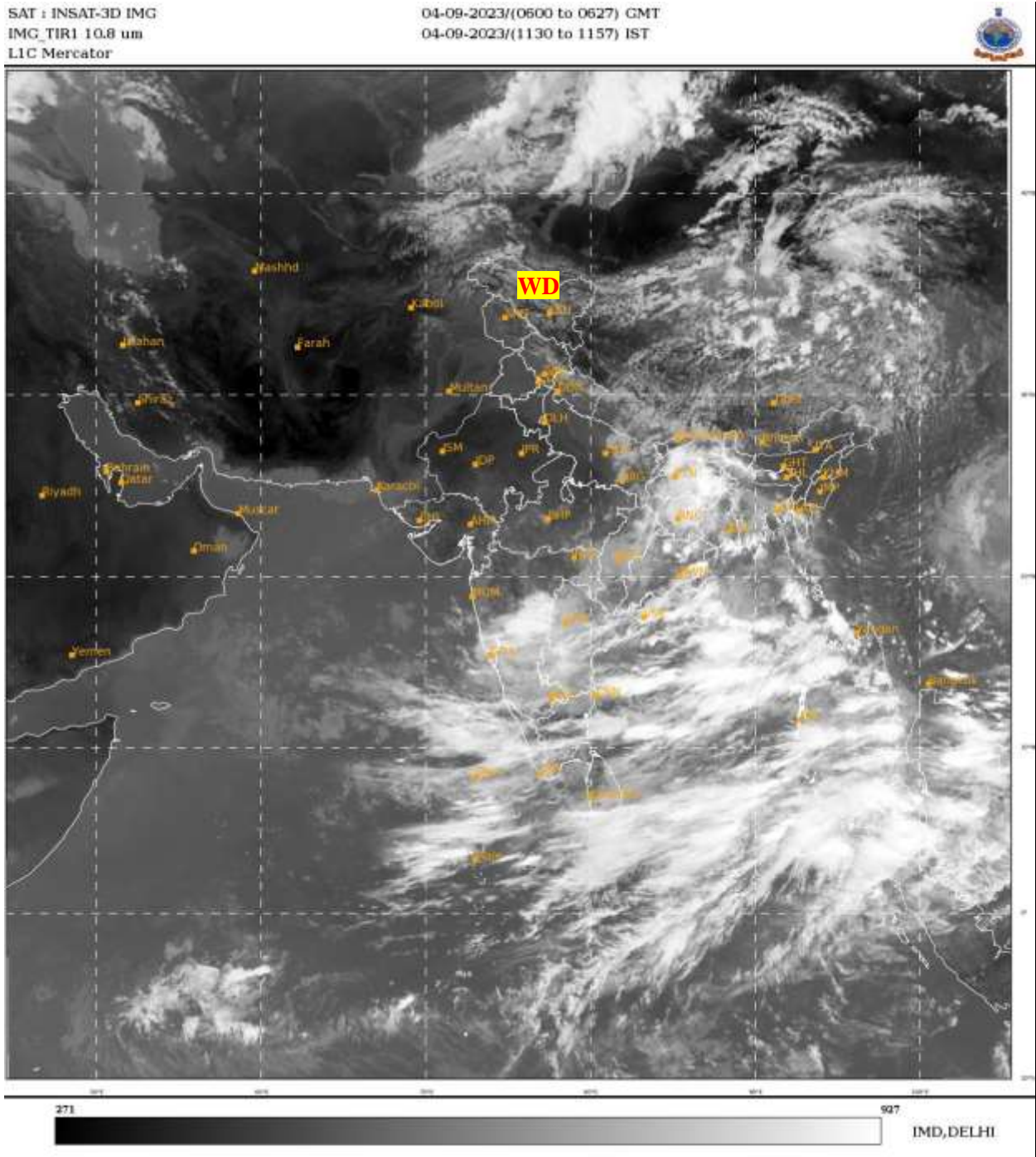




**SATELLITE BULLETIN BASED ON SATELLITE
IMAGERIES AND PRODUCTS**
04.09.2023 TIME 0600 UTC



TCIN50 DEMS 040600

SATELLITE BULLETIN BASED ON INSAT-3D PIC OF 040600 UTC (.)

REGION COVERED BETWEEN LAT 50.0°N TO 35.0°S AND LONG 40.0°E TO 125.0°E (.)

SALIENT FEATURES:-

CONVECTION OVER NORTH-EAST BAY & N/HOOD :

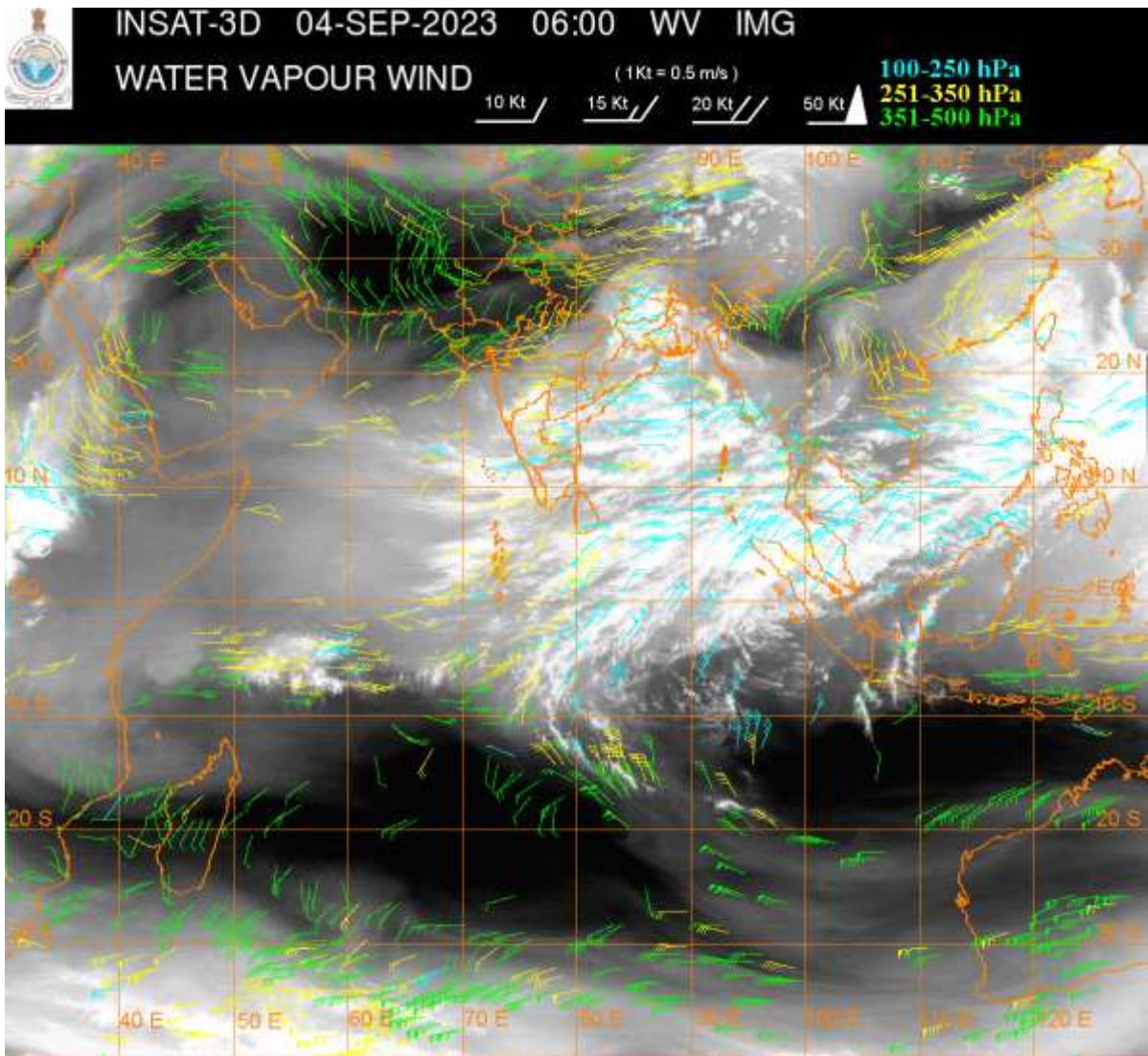
CONVECTION OVER NE BAY & N/HOOD PERSISTS DURING LAST 06 HOURS (.) MINIMUM **CTT**
MINUS 80 DEG CEL (.)

WESTERN DISTURBANCE:-

SCT MULTILAYERED CLOUDS OVER LADAKH & N/HOOD IN ASSW **WD** OVER THE AREA (.)

THUNDERSTORM / CONVECTIVE ACTIVITY:-

INTENSE THUNDERSTORM / CONVECTIVE ACTIVITY OBSERVED OVER BHR NE JHRKND N
ORS NIK N COTL AP (.)



CLOUDS DESCRIPTION WITHIN INDIA:-

NORTH:-

SCT LOW/MED CLOUDS WITH EMBDD WK TO MOD CONVTN OVER LADAKH E UP (.) SCT LOW/MED CLOUDS OVER J&K HP UTRKND W UP (.)

EAST:-

SCT TO BKN LOW/MED CLOUDS WITH EMBDD INT TO V INT CONVTN OVER SE BHR N ORS (MINIMUM **CTT MINUS 77 DEG CEL**) (.) SCT LOW/MED CLOUDS WITH EMBDD MOD TO INT CONVTN OVER REST BHR JHRKND SHWB C MEGHA AND WK TO MOD CONVTN OVER CHTGH S ORS GWB SKM ARUPR MIZO TRP (.) SCT LOW/MED CLOUDS OVER REST NE STATES (.)

WEST:-

SCT LOW/MED CLOUDS WITH EMBDD MOD TO INT CONVTN OVER SOUTH M MAHA S MRTHWD AND ISOL WK TO MOD CONVTN OVER VID S KKN & GOA (.) SCT LOW/MED CLOUDS OVER SE RAJ GUJ MP REST MAHA (.)

SOUTH:-

SCT LOW/MED CLOUDS WITH EMBDD MOD TO INT CONVTN OVER NIK N COTL AP S KER S TN ANDAMAN & NICOBAR ILS (.) SCT LOW/MED CLOUDS WITH EMBDD WK TO MOD CONVTN OVER REST KRNTK TLNGN RYLSM S COTL AP N KER N TN LKSDP ILS (.)

ARABIAN SEA:-

SCT TO BKN LOW/MED CLOUDS WITH EMBDD MOD TO INT CONVTN OVER SE ARSEA AND COMORIN AREA (.) SCT LOW/MED CLOUDS WITH EMBDD ISOL WK TO MOD CONVTN OVER EC ARSEA (.)

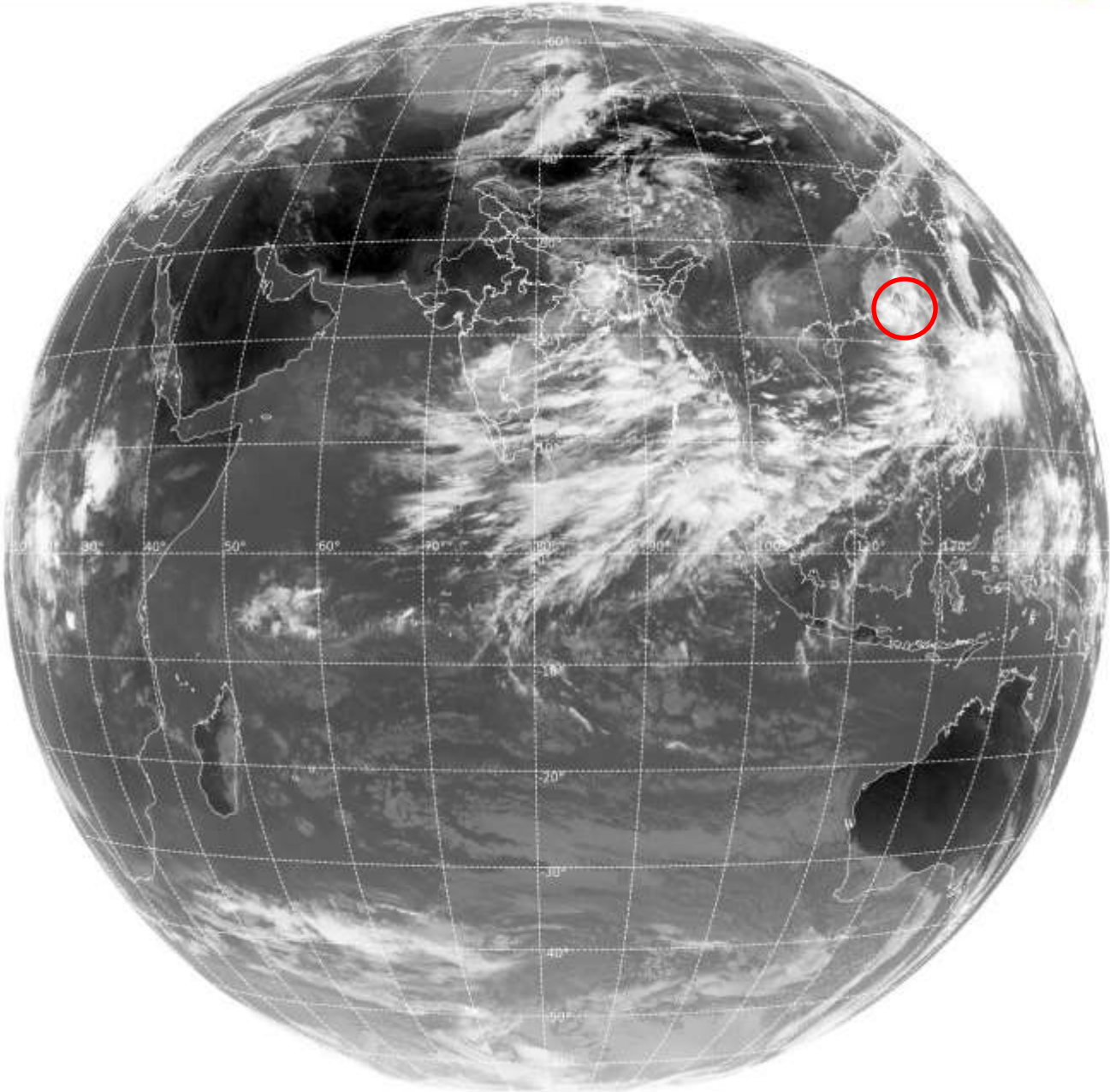
BAY OF BENGAL & ANDAMAN SEA:-

SCT TO BKN LOW/MED CLOUDS WITH EMBDD INT TO V INT CONVTN OVER BAY ANDAMAN SEA (.)

CLOUDS DESCRIPTION OUTSIDE INDIA:-

SAT : INSAT-3D IMG
Thermal Infrared1 Count 10.8 um
LIB FULL DISK

04-09-2023/(0600 to 0627) GMT
04-09-2023/(1130 to 1157) IST



271

975

IMD,DELHI

VORTEX (HAIKUI) OVER S CHINA SEA :-

VORTEX (**HAIKUI**) OVER S CHINA SEA & N/HOOD CENTERED NEAR **23.0N / 119.4E** (.) **T3.0/4.0** (.)
MAX CORRESPONDING WINDS UPTO **64-89** KTS (.) ASSTD BKN LOW/MED CLOUDS WITH
EMBDD INT TO V INT CONVTN OVER AREA BET LAT 21.5N TO 26.0N LONG 116.0E TO 121.0E &
TAIWAN (.)

SCT LOW/MED CLOUDS WITH EMBDD MOD TO INT CONVTN OVER SRI LANKA MALDIVES
TIBET CHINA S MYANMAR THAILAND GULF OF THAILAND S CAMBODIA S VIETNAM
NORTH SUMATRA STR OF MALACCA MALASIYA BORNEO SOUTH CHINA SEA CELEBES ILS
& SEA PHILIPPINES TAIWAN EAST CHINA SEA YELLOW SEA AND OVER INDIAN OCEAN BET
LAT 5.0N TO 10.0S AND LONG 53.0E TO 100.0E (.)

TOO 04/1225 HRS IST=

NNNN

LEGEND:-

REGION	NORTH	J&K HP PJB HARY DLH UP UTRKND
	EAST	BHR JHRKND CHTGH OR WB SKM NORTH- EAST STATES
	WEST	RAJ MP GUJ MAHA GOA
	SOUTH	TLNGN AP KRNTK KER TN LKSDP ANDAMAN & NICOBAR ILS
CLOUD DISTRIBUTION	ISOL	ISOLATED (LESS THAN 25%)
	SCT	SCATTERED (25 TO 50%)
	BKN	BROKEN (51 TO 75%)
	SLD	SOLID (GREATER THAN 75%)
CLOUDS TOP TEMPERATURE	CTT	CLOUD TOP TEMPERATURE
CONVECTION	WK CONVTN	WEAK CONVECTION (CTT GREATER THAN -25°C)
	MOD CONVTN	MODERATE CONVECTION (CTT BETWEEN -25°C TO -40°C)
	INT CONVTN	INTENSE CONVECTION (CTT BETWEEN -41°C TO -70°C)
	V INT CONVTN	VERY INTENSE CONVECTION (CTT LESS THAN -70°C)
METEOROLOGICAL SUB- DIVISIONS, STATES & UNION TERITORIES	ARUPR	ARUNACHAL PRADESH
	BHR	BIHAR
	CHTGH	CHHATTISGARH
	COTL AP	COASTAL ANDHRA PRADESH
	COTL KRNTK	COASTAL KARNATAKA
	COTL ORS	COASTAL ORISSA
	GUJ	GUJARAT
	GWB	GANGETIC WEST BENGAL
	HARY	HARYANA
	DLH	DELHI
	HP	HIMACHAL PRADESH
	J&K	JAMMU AND KASHMIR
	JHRKND	JHARKHAND
	KER	KERALA
	KKN	KONKAN
	LKSDP	LAKSHADWEEP
	M MAHA	MADHYA MAHARASHTRA
	MAHA	MAHARASHTRA
	MANI	MANIPUR
	MEGHA	MEGHALAYA
	MIZO	MIZORAM
	MP	MADHYA PRADESH
	MRTHWD	MARATHWADA
	NAGA	NAGALAND
	N COTL AP	NORTH COASTAL ANDHRA PRADESH
	NIK	NORTH INTERIOR KARNATAKA
	ORS	ORISSA

	PJB	PUNJAB
	RAJ	RAJASTHAN
	RYLSM	RAYALASEEMA
	SAU & KUTCH	SAURASHTRA & KUTCH
	SHWB	SUB-HIMALAYAN WEST BENGAL
	SIK	SOUTH INTERIOR KARNATAKA
	SKM	SIKKIM
	TLNGN	TELANGANA
	TN	TAMIL NADU
	TRP	TRIPURA
	UP	UTTAR PRADESH
	UTRKND	UTTARAKHAND
	VID	VIDHARBHA
	SHWB	SUB HIMALAYAN WEST BENGAL
	GWB	GANGETIC WEST BENGAL
	ARSEA	ARABIAN SEA
	ILS	ISLANDS
MISCELLANEOUS	ASSW	IN ASSOCIATION WITH
	ASSTD	ASSOCIATED
	LLC	LOW LEVEL CIRCULATION
	EMBDD	EMBEDDED
	N/HOOD	NEIGHBOURHOOD
	EXT	EXTREME