

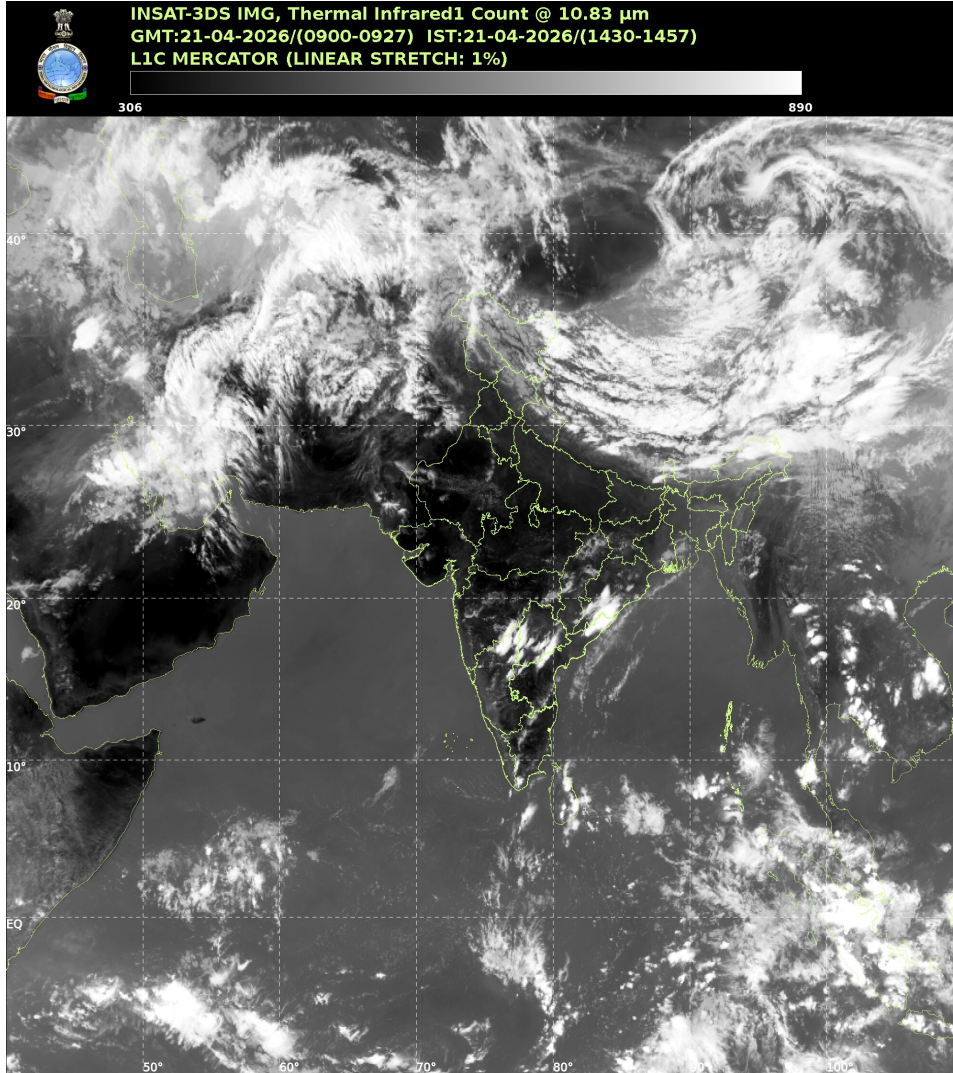


भारत मौसम विज्ञान विभाग  
पृथ्वी विज्ञान मंत्रालय  
India Meteorological Department  
Ministry of Earth Sciences



**SATELLITE BULLETIN BASED ON SATELLITE IMAGERIES AND PRODUCTS**

Date: 2026-04-21 Time: 09:00:00 UTC



TCIN50 DEMS 210900

SATELLITE BULLETIN BASED ON INSAT-3DS PIC OF 210900 UTC (.)

REGION COVERED BETWEEN LAT 50.0°N TO 35.0°S AND LONG 40.0°E TO 125.0°E (.)

**SALIENT FEATURES:**

**WESTERN DISTURBANCE (WD):-**

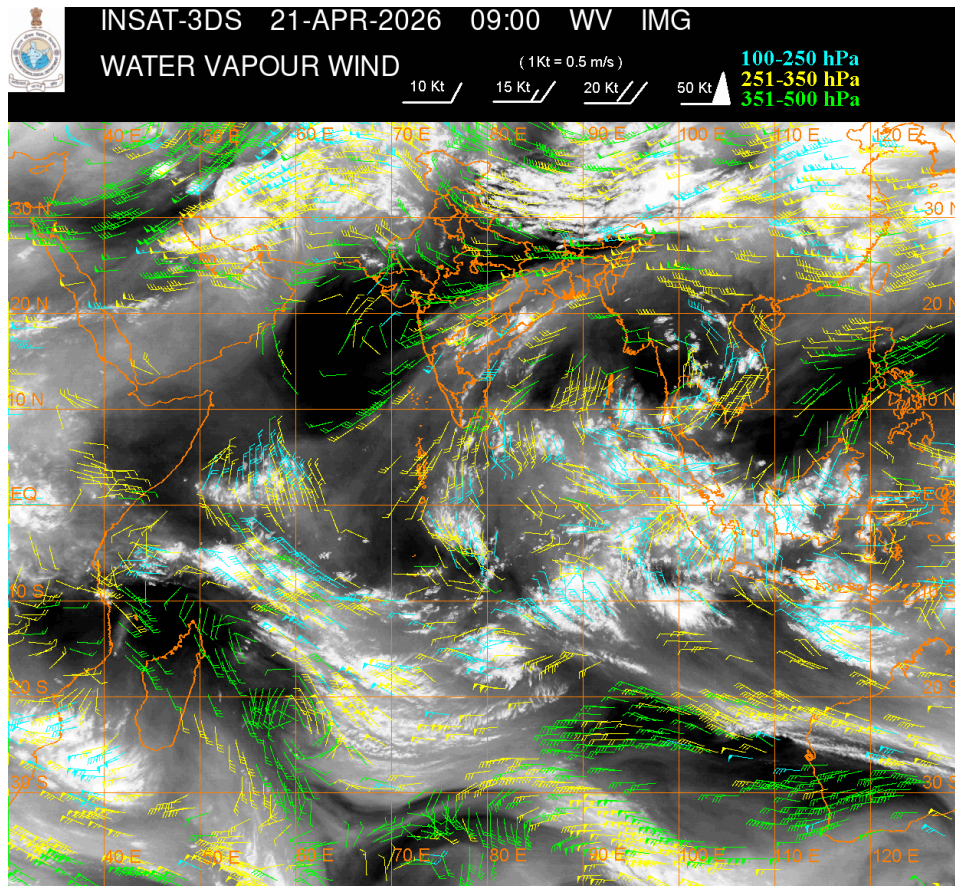
SCT TO BKN MULTILAYERED CLOUDS OVER IRAN PERSIAN GULF AFGAN PAK AND N/HOOD IN ASSW ANOTHER WD OVER THE AREA (.)

**CONVECTIVE / THUNDERSTORM ACTIVITY:-**

INTENSE TO VERY INTENSE CONVECTIVE / THUNDERSTORM ACTIVITY OVER NIK S TLNGN N COTL

AP S ORS N RYLSM EXT S TN (MINIMUM CTT MINUS 70-85 DEGREE CELSIUS)(.)

MODERATE TO INTENSE CONVECTIVE / THUNDERSTORM ACTIVITY OVER ARUPR SE MP VID N M MAHA N TLNGN CHTGH SKM NICOBAR ILS AREA (MINIMUM CTT MINUS 40-70 DEGREE CELSIUS) (.)



**CLOUD DESCRIPTION WITHIN INDIA:**

**NORTH:**

SCT LOW/MED CLOUDS WITH EMBDD ISOL WK TO MOD CONVTN OVER W LADAKH W J&K (.) ISOL TO SCT LOW/MED CLOUDS OVER E LADAKH E J&K HP UTRKND HARY UP PJB (.)

**EAST:**

SCT LOW/MED CLOUDS WITH EMBDD MOD TO INT CONVTN OVER ARUPR SKM (.) SCT LOW/MED CLOUDS WITH EMBDD WK TO MOD CONVTN OVER CHTGH ORS GWB NAGA (.) SCT LOW/MED CLOUDS OVER SHWB REST NE STATES & BD (.)

**WEST:**

SCT LOW/MED CLOUDS WITH EMBDD MOD TO INT CONVTN OVER VID S MRTHWD N M MAHA SE MP AND ISOL WK TO MOD CONVTN OVER REST MP REST MAHA (.) ISOL TO SCT LOW/MED CLOUDS OVER GUJ RAJ (.)

**SOUTH:**

SCT LOW/MED CLOUDS WITH EMBDD MOD TO INT CONVTN OVER NIK N RYLSM S TLNGN N COTL AP EXT S TN (.)SCT LOW/MED CLOUDS WITH EMBDD MOD TO INT CONVTN OVER S TLNGN NW TN NICOBAR ILS AREA (.) SCT LOW/MED CLOUDS WITH EMBDD ISOL WK TO MOD CONVTN OVER S TLNGN N RYLSM S KER (.) SCT LOW/MED CLOUDS OVER REST TN REST KER REST AP (.)

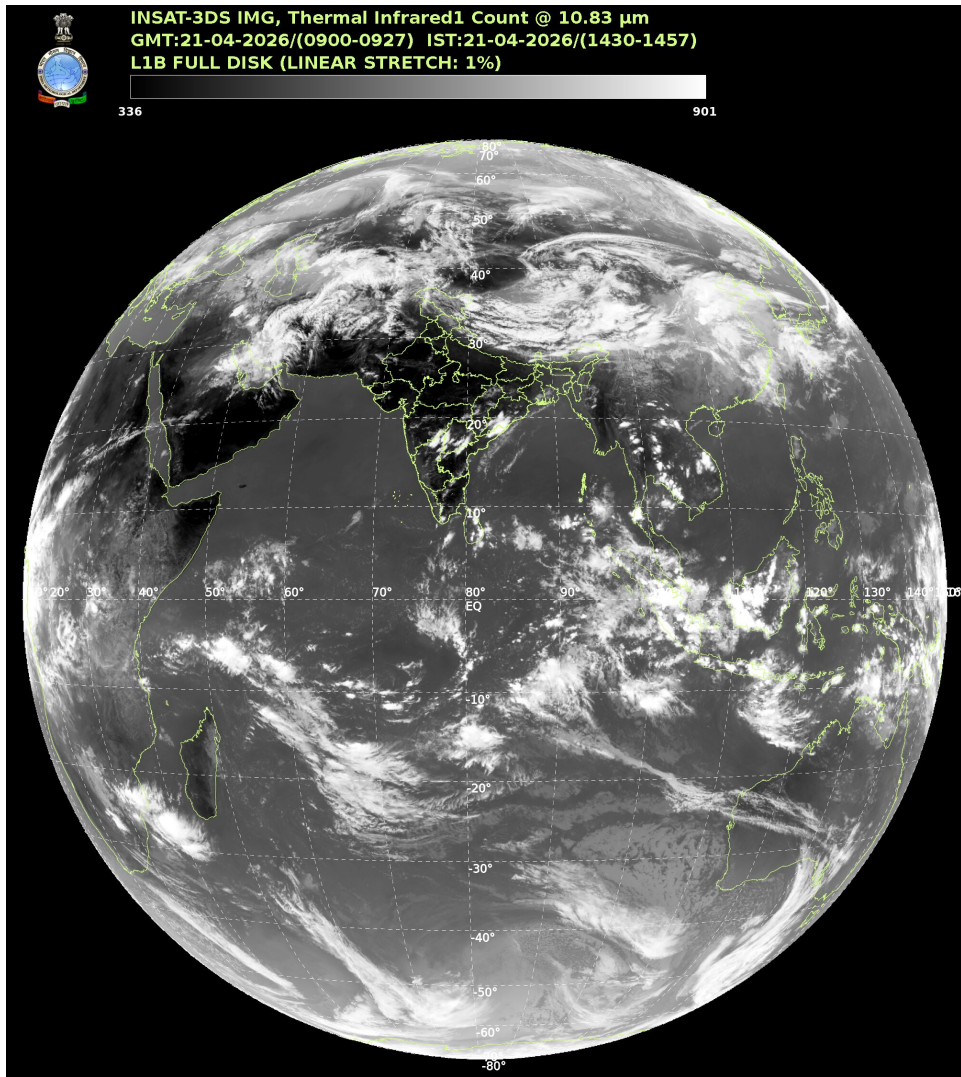
**ARABIAN SEA:**

SCT LOW/MED CLOUDS WITH EMBDD MOD TO INT CONVTN OVER EXT SW ARSEA ADJ EQUATORIAL INDIAN OCEAN COMORIN AREA(.)

**BAY OF BENGAL & ANDAMAN SEA:**

SCT TO BKN LOW/MED CLOUDS WITH EMBDD MOD TO INT CONVTN OVER SOUTH BAY AND ANDAMAN SEA (.).SCT LOW/MED CLOUDS WITH EMBDD WK TO MOD CONVTN OVER NORTH & WC BAY

**CLOUD DESCRIPTION OUTSIDE INDIA:**



SCT LOW/MED CLOUDS WITH EMBDD MOD TO INT CONVTN OVER SRI LANKA PALK STR GULF OF MANNAR MALDIVES AREA PAK BHUTAN TIBET CHINA YELLOW SEA ADJ EAST CHINA SEA MYANMAR THAILAND GULF OF THAILAND CAMBODIA LAOS VIETNAM GULF OF TONKIN HAINAN SUMATRA STR OF MALACCA MALAYSIA BORNEO SOUTH CHINA SEA JAVA ILS & SEA CELEBES ILS & SEA PHILIPPINES MADAGASCAR MOZAMBIQUE CHANNEL AND OVER INDIAN OCEAN BET LAT 5.0N TO 35.0S LONG 40.0E TO 110.0E (.).8 T00 21/1530 HRS IST

NNNN

**LEGEND**

| REGION |   |
|--------|---|
| NORTH  | J&K HP UTRKND PJB HARY DLH UP                 |
| EAST   | BHR JHRKND CHTGH ORS WB SKM NORTH-EAST STATES |
| WEST   | RAJ MP GUJ MAHA GOA                           |

|   |  |
|---|--|
| <b>SOUTH</b>  | <b>TLNGN AP KRNTK KER TN LKSDP ANDAMAN &amp; NICOBAR ILS</b> |
| <b>CLOUD DISTRIBUTION</b>   |  |
| <b>ISOL</b>   | <b>ISOLATED (LESS THAN 25%)</b>                              |
| <b>SCT</b>  | <b>SCATTERED (25 TO 50%)</b>                                 |
| <b>BKN</b>  | <b>BROKEN (51 TO 75%)</b>                                    |
| <b>SLD</b>  | <b>SOLID (GREATER THAN 75%)</b>                              |
| <b>CLOUDS TOP TEMPERATURE</b>                                       |  |
| <b>CTT</b>  | <b>CLOUD TOP TEMPERATURE</b>                                 |
| <b>CONVECTION</b>   |  |
| <b>WK CONVTN</b>  | <b>WEAK CONVECTION (CTT GREATER THAN -25°C)</b>              |
| <b>MOD CONVTN</b>   | <b>MODERATE CONVECTION (CTT BETWEEN -25°C TO -40°C)</b>      |
| <b>INT CONVTN</b>   | <b>INTENSE CONVECTION (CTT BETWEEN -41°C TO -70°C)</b>       |
| <b>V INT CONVTN</b>   | <b>VERY INTENSE CONVECTION (CTT LESS THAN -70°C)</b>         |
| <b>METEOROLOGICAL SUB-DIVISIONS, STATES &amp; UNION TERRITORIES</b> |  |
| <b>J&amp;K</b>  | <b>JAMMU AND KASHMIR</b>                                     |
| <b>HP</b>   | <b>HIMACHAL PRADESH</b>                                      |
| <b>UTRKND</b>   | <b>UTTARAKHAND</b>   |
| <b>PJB</b>  | <b>PUNJAB</b>  |
| <b>HARY</b>   | <b>HARYANA</b>   |
| <b>DLH</b>  | <b>DELHI</b>   |
| <b>BHR</b>  | <b>BIHAR</b>   |
| <b>JHRKND</b>   | <b>JHARKHAND</b>   |
| <b>CHTGH</b>  | <b>CHHATTISGARH</b>  |
| <b>ORS</b>  | <b>ORISSA</b>  |
| <b>GWB</b>  | <b>GANGETIC WEST BENGAL</b>                                  |
| <b>SHWB</b>   | <b>SUB-HIMALAYAN WEST BENGAL</b>                             |
| <b>SKM</b>  | <b>SIKKIM</b>  |
| <b>ARUPR</b>  | <b>ARUNACHAL PRADESH</b>                                     |
| <b>ASSAM</b>  | <b>ASSAM</b>   |
| <b>MEGHA</b>  | <b>MEGHALAYA</b>   |
| <b>MANI</b>   | <b>MANIPUR</b>   |
| <b>MIZO</b>   | <b>MIZORAM</b>   |
| <b>TRP</b>  | <b>TRIPURA</b>   |
| <b>RAJ</b>  | <b>RAJASTHAN</b>   |

|                        |                                 |
|------------------------|---------------------------------|
| <b>MP</b>              | <b>MADHYA PRADESH</b>           |
| <b>GUJ</b>             | <b>GUJARAT</b>                  |
| <b>SAU &amp; KUTCH</b> | <b>SAURASHTRA &amp; KUTCH</b>   |
| <b>MAHA</b>            | <b>MAHARASHTRA</b>              |
| <b>M MAHA</b>          | <b>MADHYA MAHARASHTRA</b>       |
| <b>MRTHWD</b>          | <b>MARATHWADA</b>               |
| <b>VID</b>             | <b>VIDARBHA</b>                 |
| <b>KKN</b>             | <b>KONKAN</b>                   |
| <b>TLNGN</b>           | <b>TELANGANA</b>                |
| <b>RYLSM</b>           | <b>RAYALSEEMA</b>               |
| <b>COTL AP</b>         | <b>COASTAL ANDHRA PRADESH</b>   |
| <b>NIK</b>             | <b>NORTH INTERIOR KARNATAKA</b> |
| <b>SIK</b>             | <b>SOUTH INTERIOR KARNATAKA</b> |
| <b>COTL KRNTK</b>      | <b>COASTAL KARNATAKA</b>        |
| <b>KER</b>             | <b>KERALA</b>                   |
| <b>TN</b>              | <b>TAMILNADU</b>                |
| <b>LKSDP</b>           | <b>LAKSHADWEEP</b>              |
| <b>ILS</b>             | <b>ISLANDS</b>                  |
| <b>ARSEA</b>           | <b>ARABIAN SEA</b>              |
| <b>MISCELLANEOUS</b>   |                                 |
| <b>ASSW</b>            | <b>IN ASSOCIATION WITH</b>      |
| <b>ASSTD</b>           | <b>ASSOCIATED</b>               |
| <b>LLC</b>             | <b>LOW LEVEL CIRCULATION</b>    |
| <b>EMBDD</b>           | <b>EMBEDDED</b>                 |
| <b>N/HOOD</b>          | <b>NEIGHBOURHOOD</b>            |
| <b>EXT</b>             | <b>EXTREME</b>                  |