

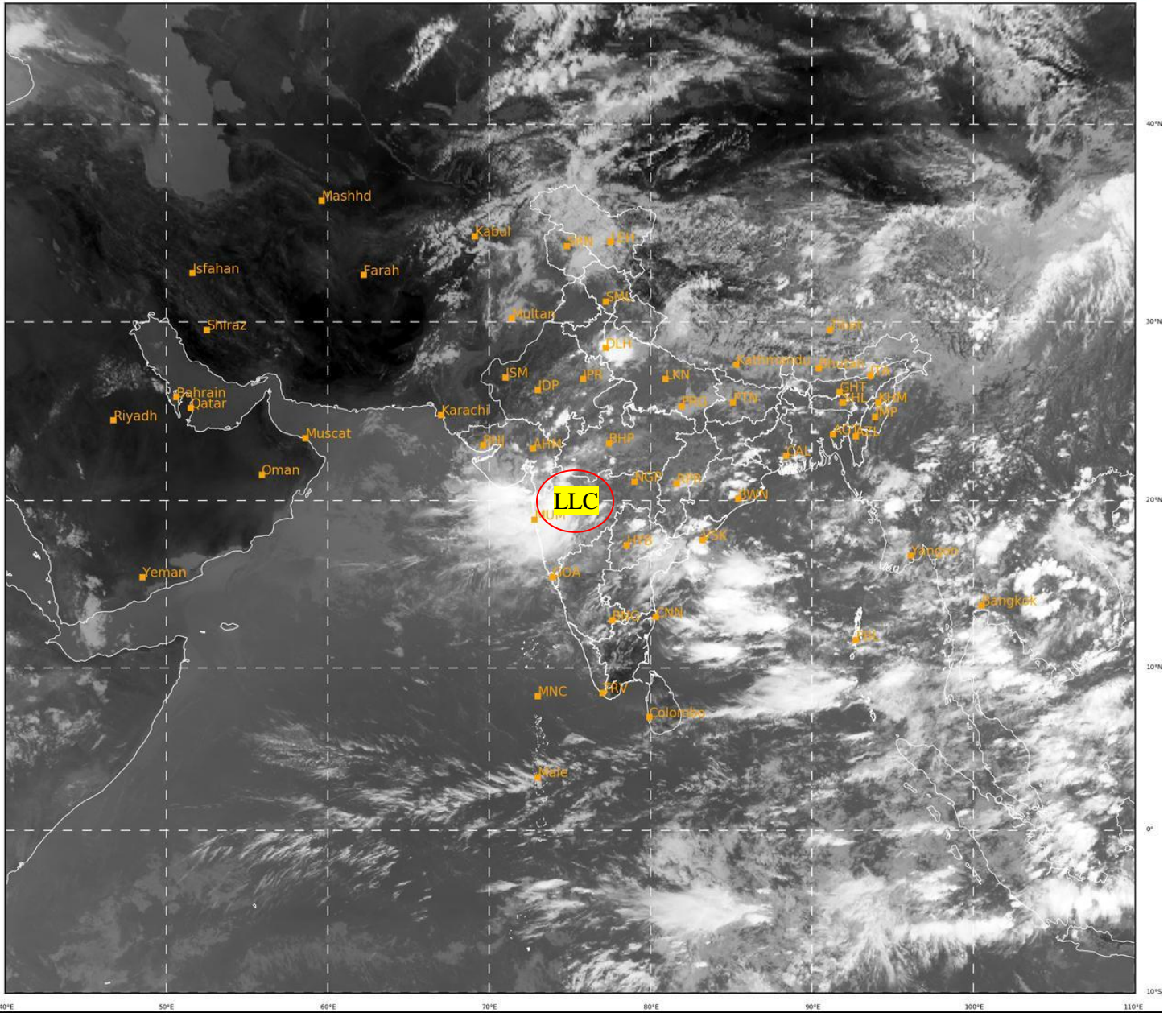


**SATELLITE BULLETIN BASED ON SATELLITE
IMAGERIES AND PRODUCTS**

31.08.2021 TIME 0600 UTC

SAT : INSAT-3D IMG
IMG_TIR1 10.8 um
LIC Mercator

31-08-2021/(0600 to 0627) GMT
31-08-2021/(1130 to 1157) IST



282

934

IMD, DELHI

TCIN50 DEMS 310600

SATELLITE BULLETIN BASED ON INSAT-3D PIC OF 310600 UTC (.)

REGION COVERED BETWEEN LAT 50.0°N TO 30.0°S AND LONG 40.0°E TO 125.0°E (.)

SALIENT FEATURES:-

LLC OVER W VID ADJ M MAHA & N/HOOD:-

LLC OVER W VID ADJ M MAHA & N/HOOD (.) ASSTD SCT LOW/MED CLOUDS WITH EMBDD INT TO V INT CONVTN OVER MADHYA MAHA N KKN AND MOD TO INT CONVTN OVER EXT W VID (.)

WESTERN DISTURBANCE (WD):-

SCT MULTILAYERED CLOUDS OVER N PAK LADAKH J&K AND N/HOOD IN ASSW **WD** OVER THE AREA (.)



INSAT-3D 31-AUG-2021 06:00 WV IMG

WATER VAPOUR WIND

(1Kt = 0.5 m/s)

10 Kt

15 Kt

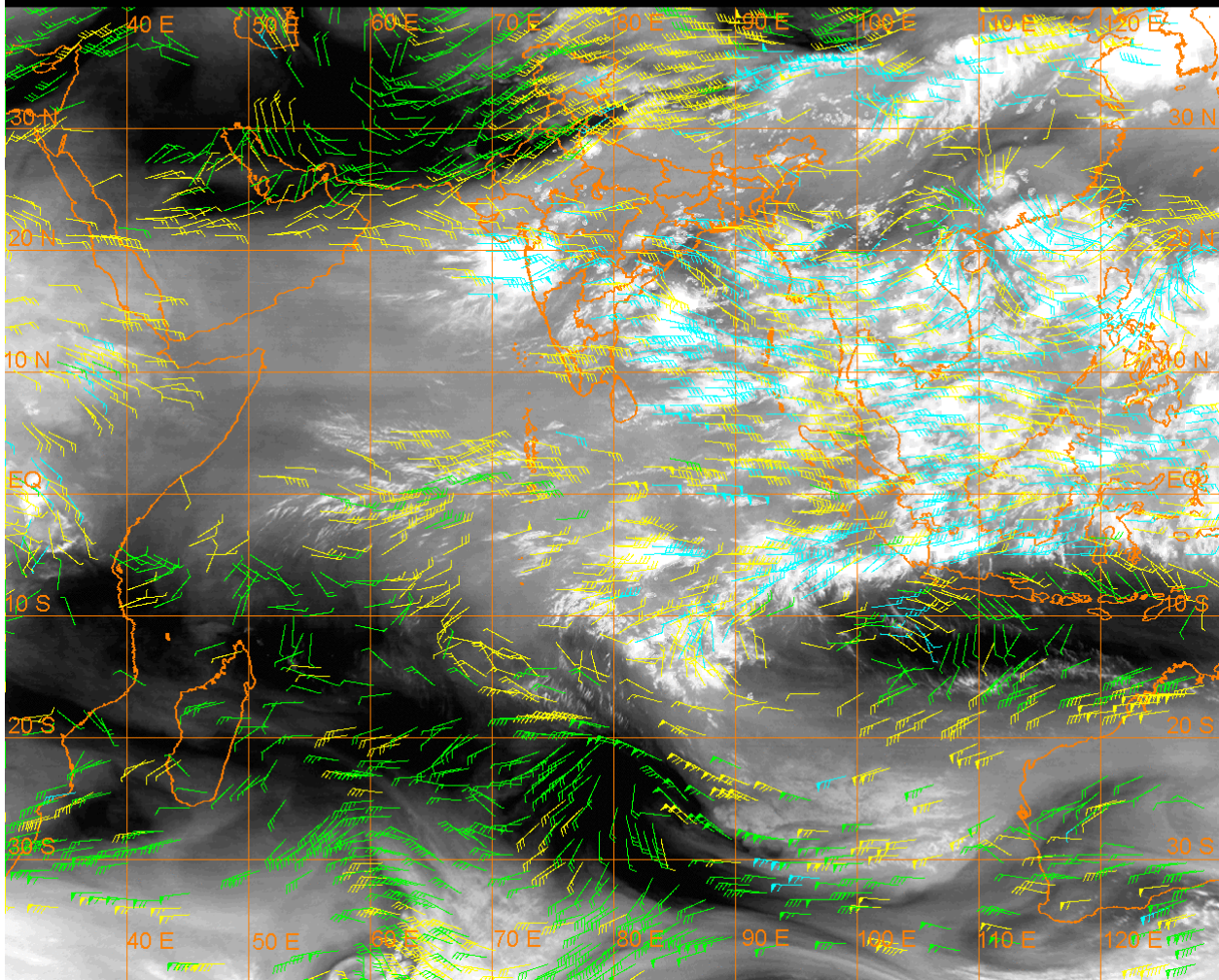
20 Kt

50 Kt

100-250 hPa

251-350 hPa

351-500 hPa



CLOUDS DESCRIPTION WITHIN INDIA:-

NORTH:-

SCT LOW/MED CLOUDS WITH EMBDD MOD TO INT CONVTN OVER NW UP DLH ADJ SE HARY (.)
SCT LOW/MED CLOUDS WITH EMBDD WK TO MOD CONVTN OVER LADAKH J&K NW HP (.)
SCT LOW/MED CLOUDS OVER REST HP UTRKND E UP (.)

EAST:-

SCT LOW/MED CLOUDS WITH EMBDD MOD TO INT CONVTN OVER NE& EXT S ORS SE JHRKND S
GWB N SHWB EXT PARTS OF ARUPR EXT E MEGHA (.) SCT LOW/MED CLOUDS WITH EMBDD
WK TO MOD CONVTN OVER C CHTGH REST ARUPR NE ASSAM (.) SCT LOW/MED CLOUDS
WITH EMBDD WK CONVTN OVER BHR SKM (.)SCT LOW/MED CLOUDS OVER REST PARTS OF
THE REGION (.)

WEST:-

SCT TO BKN LOW/MED CLOUDS WITH EMBDD INT TO V INT CONVTN OVER NORTH OF
MADHYA MAHA N KKN AND MOD TO INT CONVTN OVER WC MP SE RAJ SE GUJ EXT W VID
SOUTH MADHYA MAHA N MRTHWD & S KKN (.) SCT LOW/MED CLOUDS WITH EMBDD ISOL
WK TO MOD CONVTN OVER NE RAJ S MRTHWD (.) SCT LOW/MED CLOUDS OVER E MP REST
VID & GOA (.)

SOUTH:-

SCT LOW/MED CLOUDS WITH EMBDD MOD TO INT CONVTN OVER E TLNGN N COTL AP (.)
SCT LOW/MED CLOUDS WITH EMBDD WK TO MOD CONVTN OVER REST TLNGN SIK RYLSM
S COTL AP N TN NC KER S ANDAMAN & NICOBAR ILS (.)SCT LOW/MED CLOUDS OVER REST
KRNTK S KER LKSDP & N ANDAMAN ILS (.)

ARABIAN SEA:-

SCT LOW/MED CLOUDS WITH EMBDD INT TO V INT CONVTN OVER NE ARSEA GUJ COAST
GULF OF CAMBAY AND MOD TO INT CONVTN OVER EC ARSEA OFF MAHA COAST (.)

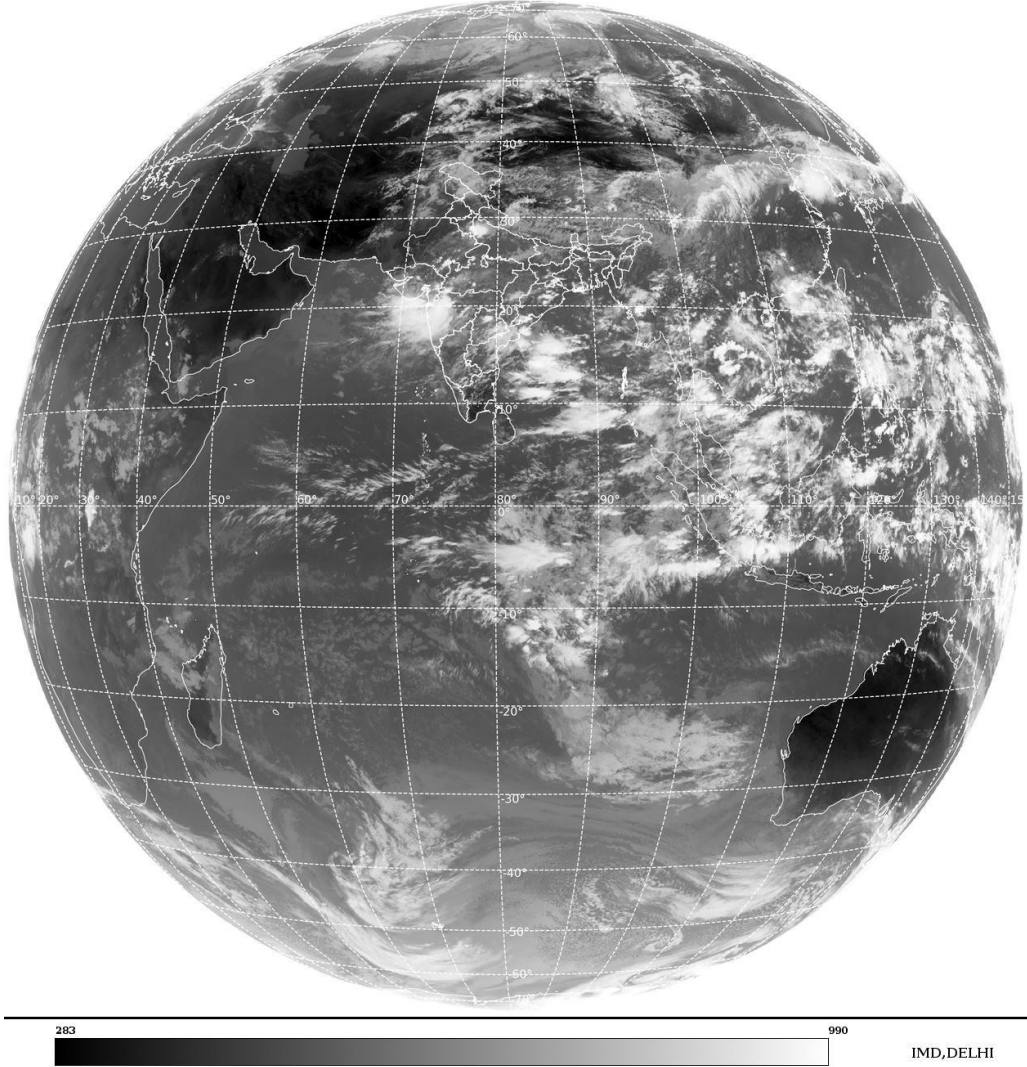
BAY OF BENGAL & ANDAMAN SEA:-

SCT LOW/MED CLOUDS WITH EMBDD INT TO V INT CONVTN OVER WC ADJ S BAY (.) SCT TO SCT LOW/MED CLOUDS WITH EMBDD MOD TO INT CONVTN OVER SE BAY ARAKAN COAST ANDAMAN SEA & GULF OF MARTABAN (.)

CLOUDS DESCRIPTION OUTSIDE INDIA:-

SAT : INSAT-3D IMG
Thermal Infrared1 Count 10.8 um
L1B FULL DISK

31-08-2021/(0600 to 0627) GMT
31-08-2021/(1130 to 1157) IST



SCT LOW/MED CLOUDS WITH EMBDD MOD TO INT CONVTN OVER MALDIVES PAK NEPAL TIBET CHINA YELLOW SEA E CHINA SEA S TAIWAN MYANMAR GULF OF TONKIN THAILAND GULF OF THAILAND CAMBODIA LAOS N VIETNAM SUMATRA STR OF MALACCA MALAY PENINSULA BORNEO S CHINA SEA CELEBES ILS & SEA PHILIPPINES SULU SEA AND INDIAN OCEAN BET LAT 5.0N TO 16.0S LONG 65.0E TO 105.0E (.)

TOO31/1240F=

NNNN

LEGEND:-

REGION	NORTH	J&K HP PJB HARY DLH UP UTRKND
	EAST	BHR JHRKND CHTGH ORS WB SKMNORTH- EAST STATES
	WEST	RAJ MP GUJ MAHA GOA

	SOUTH	TLNGN AP KRNTK KER TN LKSDP ANDAMAN & NICOBAR ILS
--	--------------	--

CLOUD DISTRIBUTION	ISOL	ISOLATED (LESS THAN 25%)	
	SCT	SCATTERED (25 TO 50%)	
	BKN	BROKEN (51 TO 75%)	
	SLD	SOLID (GREATER THAN 75%)	
CLOUDS TOP TEMPERATURE	CTT	CLOUD TOP TEMPERATURE	
CONVECTION	WK CONVTN	WEAK CONVECTION (CTT GREATER THAN -25°C)	
	MOD CONVTN	MODERATE CONVECTION (CTT BETWEEN -25°C TO -40°C)	
	INT CONVTN	INTENSE CONVECTION (CTT BETWEEN -41°C TO -70°C)	
	V INT CONVTN	VERY INTENSE CONVECTION (CTT LESS THAN -70°C)	
METEOROLOGICAL SUB-DIVISIONS, STATES & UNION TERRITORIES	ARUPR	ARUNACHAL PRADESH	
	BHR	BIHAR	
	CHTGH	CHHATTISGARH	
	COTL AP	COASTAL ANDHRA PRADESH	
	COTL KRNTK	COASTAL KARNATAKA	
	COTL ORS	COASTAL ORISSA	
	GUJ	GUJARAT	
	GWB	GANGETIC WEST BENGAL	
	HARY	HARYANA	
	DLH	DELHI	
	HP	HIMACHAL PRADESH	
	J&K	JAMMU AND KASHMIR	
	JHRKND	JHARKHAND	
	KER	KERALA	
	KKN	KONKAN	
	LKSDP	LAKSHADWEEP	
	M MAHA	MADHYA MAHARASHTRA	
	MAHA	MAHARASHTRA	
	MANI	MANIPUR	
	MEGHA	MEGHALAYA	
	MIZO	MIZORAM	
	MP	MADHYA PRADESH	
		MRTHWD	MARATHWADA
		NAGA	NAGALAND
N COTL AP		NORTH COASTAL ANDHRA PRADESH	
NIK		NORTH INTERIOR KARNATAKA	
ORS		ORISSA	
PJB		PUNJAB	
RAJ		RAJASTHAN	
RYLSM		RAYALASEEMA	
SAU & KUTCH		SAURASHTRA & KUTCH	

	SHWB	SUB-HIMALAYAN WEST BENGAL
	SIK	SOUTH INTERIOR KARNATAKA
	SKM	SIKKIM
	TLNGN	TELANGANA
	TN	TAMIL NADU
	TRP	TRIPURA
	UP	UTTAR PRADESH
	UTRKND	UTTARAKHAND
	VID	VIDHARBHA
	SHWB	SUB HIMALAYAN WEST BENGAL
	GWB	GANGETIC WEST BENGAL
	ARSEA	ARABIAN SEA
	ILS	ISLANDS
MISCELLANEOUS	ASSW	IN ASSOCIATION WITH
	ASSTD	ASSOCIATED
	LLC	LOW LEVEL CIRCULATION
	EMBDD	EMBEDDED
	N/HOOD	NEIGHBOURHOOD
	EXT	EXTREME