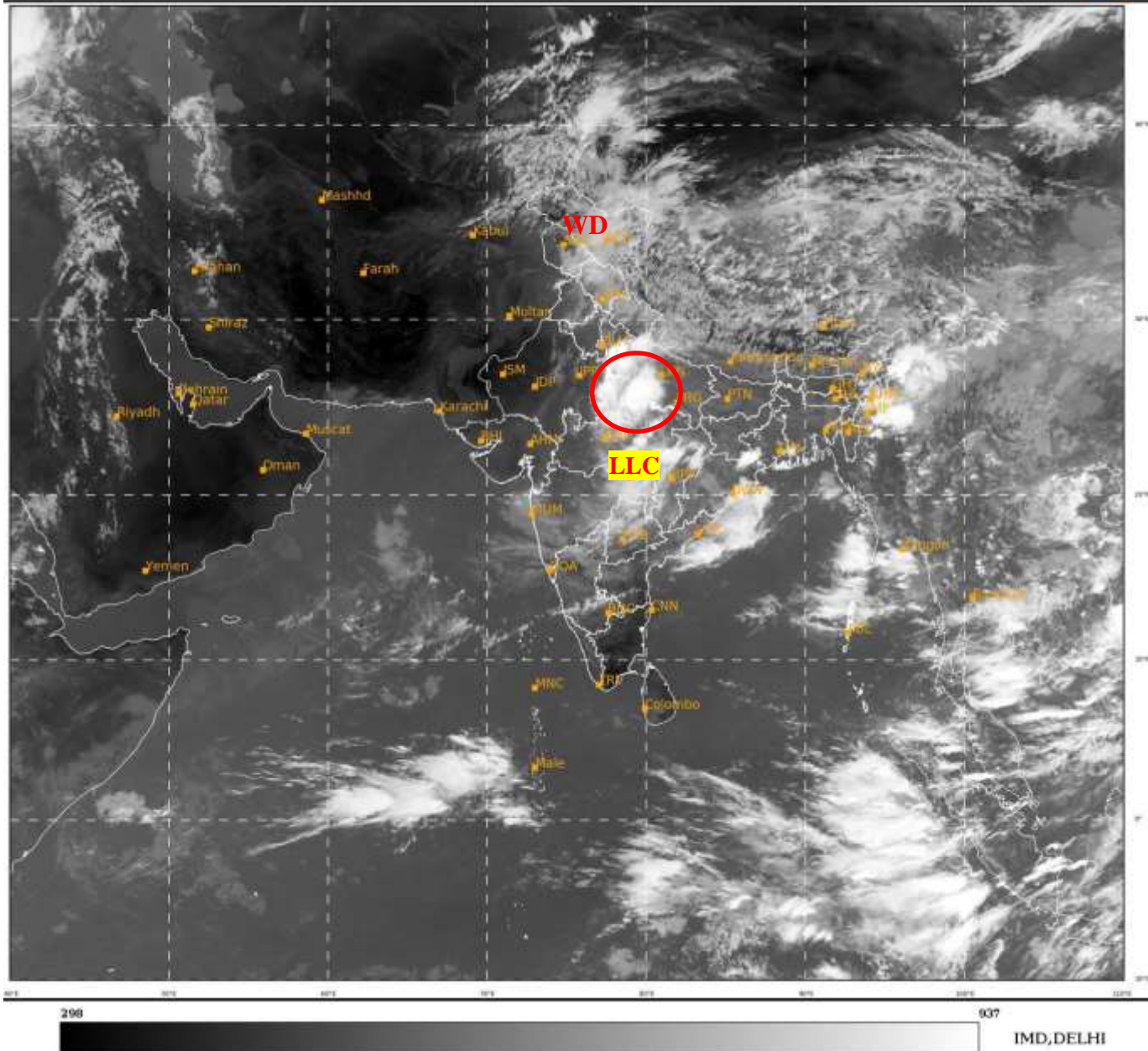




**SATELLITE BULLETIN BASED ON SATELLITE  
IMAGERIES AND PRODUCTS**  
**21.09.2022 TIME 0600 UTC**

SAT : INSAT-3DR IMG  
IMG TIR1 10.8 um  
LIC Mercator

21-09-2022/(0545 to 0612) GMT  
21-09-2022/(1115 to 1142) IST



TCIN50 DEMS 210600

SATELLITE BULLETIN BASED ON INSAT-3D PIC OF 210600 UTC (.)

REGION COVERED BETWEEN LAT 50.0°N TO 35.0°S AND LONG 40.0°E TO 125.0°E (.)

**SALIENT FEATURES:-**

**LLC OVER NE MP ADJ UP AND N/HOOD :-**

LOW LEVEL CIRCULATION (LLC) OVER NE MP ADJ UP AND N/HOOD (.) ASSTD SCT TO BKN LOW/MED CLOUDS WITH EMBDD INT TO V INT CONVTN OVER N MP C UP W CHTGH (.) MINIMUM CTT MINUS 80 DEG C (.)

**WESTERN DISTURBANCE:-**

SCT MULTILAYERED CLOUDS OVER N PAK J&K HP LADAKH AND N/HOOD IN ASSW WD OVER THE AREA (.)

**INTENSE CONVECTIVE CLOUDS:-**

INTENSE CONVECTIVE CLOUDS OBSERVED OVER UP DLH N HP N MP E RAJ CHTGH ORS VID N TLNGN ARUPR NE ASSAM NAGA MANI (.)





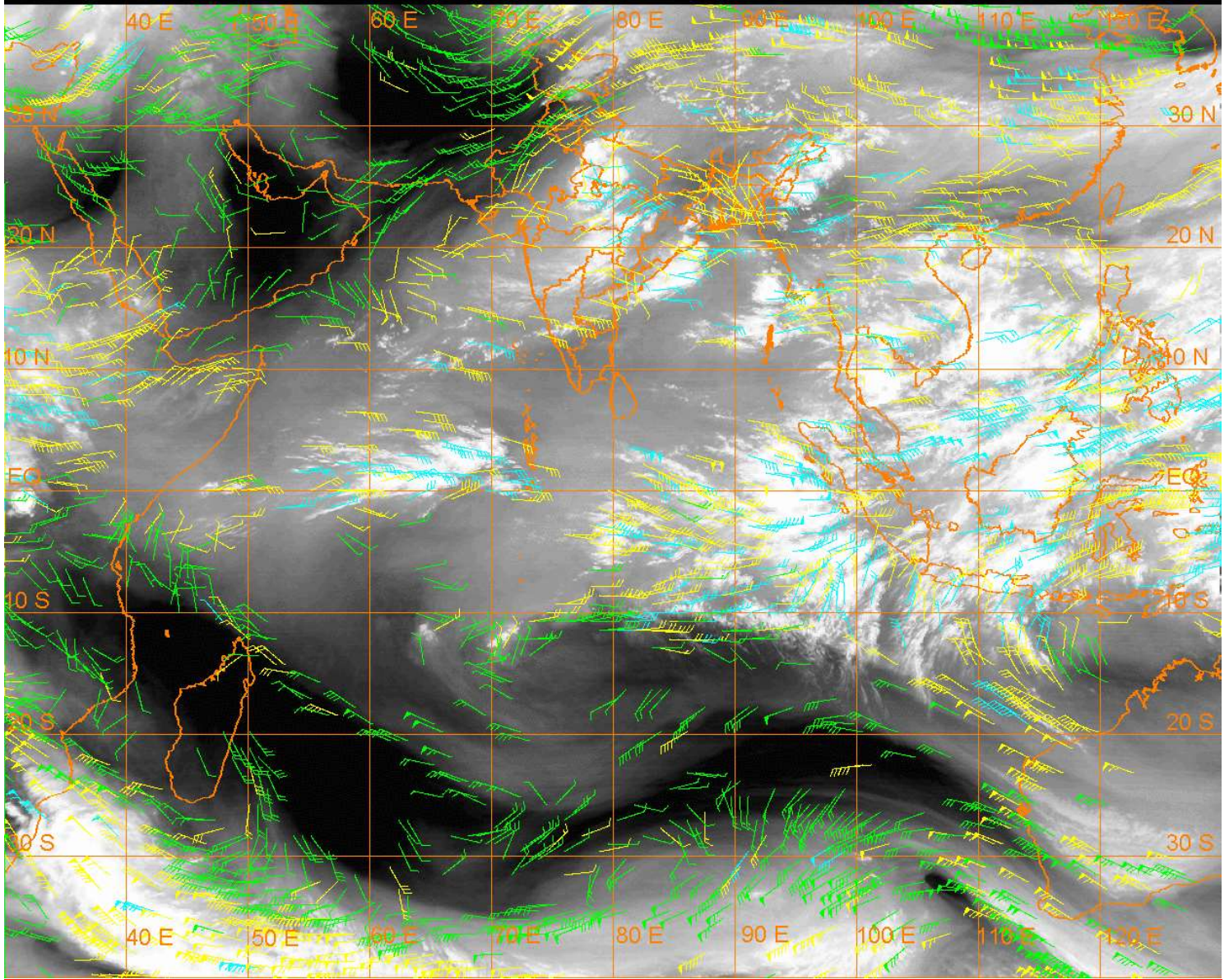
INSAT-3D 21-SEP-2022 06:00 WV IMG

WATER VAPOUR WIND

(1Kt = 0.5 m/s)

100-250 hPa  
251-350 hPa  
351-500 hPa

10 Kt / 15 Kt / 20 Kt / 50 Kt



**CLOUDS DESCRIPTION WITHIN INDIA:-**

**NORTH:-**

SCT TO BKN LOW/MED CLOUDS WITH EMBDD INT TO V INT CONVTN OVER W& C UP SE UTRKND (MINIMUM CTT MINUS 78 DEG C) SCT TO BKN LOW/MED CLOUDS WITH EMBDD MOD TO INT CONVTN OVER S J&K N HP (.) SCT LOW/MED CLOUDS WITH EMBDD WK TO MOD CONVTN OVER REST UP LADAKH REST J&K REST HP REST UTRKND PJB HARY REST W UP DLH (.)

**EAST:-**

SCT TO BKN LOW/MED CLOUDS WITH EMBDD INT TO V INT CONVTN OVER SE ARUPR ADJ NE ASSAM SE JHRKND(MINIMUM CTT MINUS 78 DEG C) (.) SCT LOW/MED CLOUDS WITH EMBDD WK TO MOD CONVTN OVER S CHTGH REST ASSAM NAGA MANI ORS MIZO (.) SCT LOW/MED CLOUDS OVER BHR REST JHRKND GWB SHWB SKM REST NE STATES (.)

**WEST:-**

SCT TO BKN LOW/MED CLOUDS WITH EMBDD INT TO V INT CONVTN OVER N MP (MINIMUM CTT MINUS 74 DEG C) (.) SCT LOW/MED CLOUDS WITH EMBDD MOD TO INT CONVTN OVER S MP VID AND WK TO MOD CONVTN OVER E RAJ REST MAHA (.) SCT LOW/MED CLOUDS OVER W RAJ & GOA GUJ (.)

**SOUTH:-**

SCT LOW/MED CLOUDS WITH EMBDD MOD TO INT CONVTN OVER TLNGN AND WK TO MOD CONVTN OVER RYLSM COTL AP KRNTK LKSDP & ANDAMAN ILS (.) SCT LOW/MED CLOUDS OVER KER TN & NICOBAR ILS (.)



**ARABIAN SEA:-**

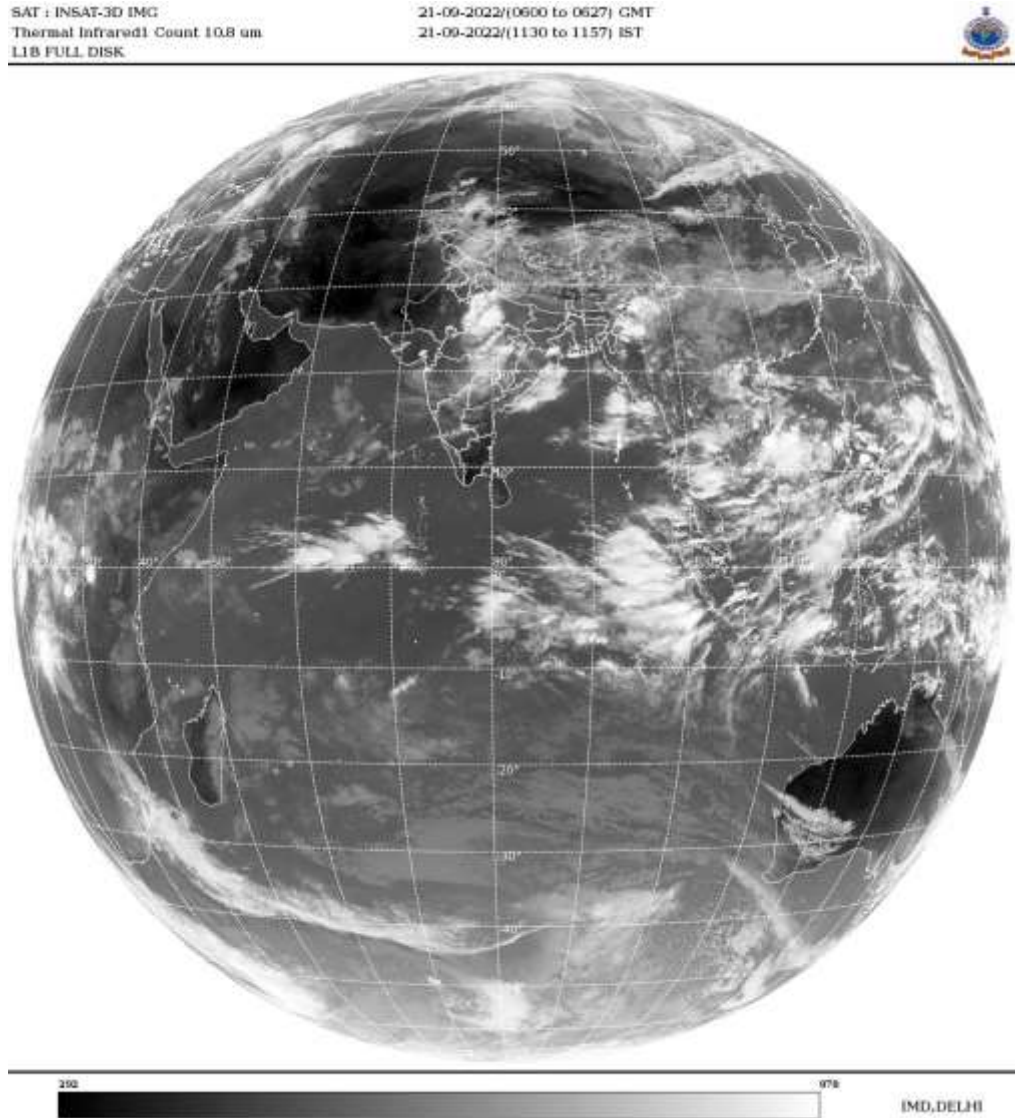
**SCT LOW/MED CLOUDS WITH EMBDD WK TO MOD CONVTN OVER SE & EC ARSEA AND LKSDP ILS AREA (.)**

**BAY OF BENGAL & ANDAMAN SEA:-**

**SCT TO BKN LOW/MED CLOUDS WITH EMBDD INT TO V INT CONVTN OVER NW BAY OFF ORS –AP COAST (MINIMUM CTT MINUS 70 DEG C) (.)**

**SCT LOW/MED CLOUDS WITH EMBDD MOD TO INT CONVTN OVER CENTRAL BAY ANDAMAN SEA ARAKAN COAST AND ISOL WK TO MOD CONVTN OVER REST BAY (.)**

**CLOUDS DESCRIPTION OUTSIDE INDIA:-**



**SCT LOW/MED CLOUDS WITH EMBDD MOD TO INT CONVTN OVER S MALDIVES NEPAL TIBET CHINA MYANMAR THAILAND GULF OF THAILAND CAMBODIA LAOS VIETNAM SUMATRA STR OF MALACCA MALAYSIA BORNEO SOUTH CHINA SEA JAVA ILS & SEA CELEBES ILS & SEA PHILIPPINES SULU SEA AND OVER INDIAN OCEAN BET EQ TO LAT 5.0N LONG 58.0E TO 72.0E AND BET LAT 5.0N TO 12.0S LONG 78.0E TO 110.0E (.)**

**TOO 21/1240 HRS IST=**

**NNNN**

**LEGEND:-**

<b>REGION</b>	<b>NORTH</b>	<b>J&amp;K HP PJB HARY DLH UP UTRKND</b>
	<b>EAST</b>	<b>BHR JHRKND CHTGH OR WB SKM NORTH- EAST STATES</b>

	<b>WEST</b>	<b>RAJ MP GUJ MAHA GOA</b>
	<b>SOUTH</b>	<b>TLNGN AP KRNTK KER TN LKSDP ANDAMAN &amp; NICOBAR ILS</b>
<b>CLOUD DISTRIBUTION</b>	<b>ISOL</b>	<b>ISOLATED (LESS THAN 25%)</b>
	<b>SCT</b>	<b>SCATTERED (25 TO 50%)</b>
	<b>BKN</b>	<b>BROKEN (51 TO 75%)</b>
	<b>SLD</b>	<b>SOLID (GREATER THAN 75%)</b>
<b>CLOUDS TOP TEMPERATURE</b>	<b>CTT</b>	<b>CLOUD TOP TEMPERATURE</b>
<b>CONVECTION</b>	<b>WK CONVTN</b>	<b>WEAK CONVECTION (CTT GREATER THAN -25°C)</b>
	<b>MOD CONVTN</b>	<b>MODERATE CONVECTION (CTT BETWEEN -25°C TO -40°C)</b>
	<b>INT CONVTN</b>	<b>INTENSE CONVECTION (CTT BETWEEN -41°C TO -70°C)</b>
	<b>V INT CONVTN</b>	<b>VERY INTENSE CONVECTION (CTT LESS THAN -70°C)</b>
<b>METEOROLOGICAL SUB-DIVISIONS, STATES &amp; UNION TERRITORIES</b>	<b>ARUPR</b>	<b>ARUNACHAL PRADESH</b>
	<b>BHR</b>	<b>BIHAR</b>
	<b>CHTGH</b>	<b>CHHATTISGARH</b>
	<b>COTL AP</b>	<b>COASTAL ANDHRA PRADESH</b>
	<b>COTL KRNTK</b>	<b>COASTAL KARNATAKA</b>
	<b>COTL ORS</b>	<b>COASTAL ORISSA</b>
	<b>GUJ</b>	<b>GUJARAT</b>
	<b>GWB</b>	<b>GANGETIC WEST BENGAL</b>
	<b>HARY</b>	<b>HARYANA</b>
	<b>DLH</b>	<b>DELHI</b>
	<b>HP</b>	<b>HIMACHAL PRADESH</b>
	<b>J&amp;K</b>	<b>JAMMU AND KASHMIR</b>
	<b>JHRKND</b>	<b>JHARKHAND</b>
	<b>KER</b>	<b>KERALA</b>
	<b>KKN</b>	<b>KONKAN</b>
	<b>LKSDP</b>	<b>LAKSHADWEEP</b>
	<b>M MAHA</b>	<b>MADHYA MAHARASHTRA</b>
	<b>MAHA</b>	<b>MAHARASHTRA</b>
	<b>MANI</b>	<b>MANIPUR</b>
	<b>MEGHA</b>	<b>MEGHALAYA</b>
	<b>MIZO</b>	<b>MIZORAM</b>
<b>MP</b>	<b>MADHYA PRADESH</b>	
	<b>MRTHWD</b>	<b>MARATHWADA</b>
	<b>NAGA</b>	<b>NAGALAND</b>
	<b>N COTL AP</b>	<b>NORTH COASTAL ANDHRA PRADESH</b>
	<b>NIK</b>	<b>NORTH INTERIOR KARNATAKA</b>
	<b>ORS</b>	<b>ORISSA</b>
	<b>PJB</b>	<b>PUNJAB</b>
	<b>RAJ</b>	<b>RAJASTHAN</b>
	<b>RYLSM</b>	<b>RAYALASEEMA</b>

	<b>SAU &amp; KUTCH</b>	<b>SAURASHTRA &amp; KUTCH</b>
	<b>SHWB</b>	<b>SUB-HIMALAYAN WEST BENGAL</b>
	<b>SIK</b>	<b>SOUTH INTERIOR KARNATAKA</b>
	<b>SKM</b>	<b>SIKKIM</b>
	<b>TLNGN</b>	<b>TELANGANA</b>
	<b>TN</b>	<b>TAMIL NADU</b>
	<b>TRP</b>	<b>TRIPURA</b>
	<b>UP</b>	<b>UTTAR PRADESH</b>
	<b>UTRKND</b>	<b>UTTARAKHAND</b>
	<b>VID</b>	<b>VIDHARBHA</b>
	<b>SHWB</b>	<b>SUB HIMALAYAN WEST BENGAL</b>
	<b>GWB</b>	<b>GANGETIC WEST BENGAL</b>
	<b>ARSEA</b>	<b>ARABIAN SEA</b>
	<b>ILS</b>	<b>ISLANDS</b>
<b>MISCELLANEOUS</b>	<b>ASSW</b>	<b>IN ASSOCIATION WITH</b>
	<b>ASSTD</b>	<b>ASSOCIATED</b>
	<b>LLC</b>	<b>LOW LEVEL CIRCULATION</b>
	<b>EMBDD</b>	<b>EMBEDDED</b>
	<b>N/HOOD</b>	<b>NEIGHBOURHOOD</b>
	<b>EXT</b>	<b>EXTREME</b>