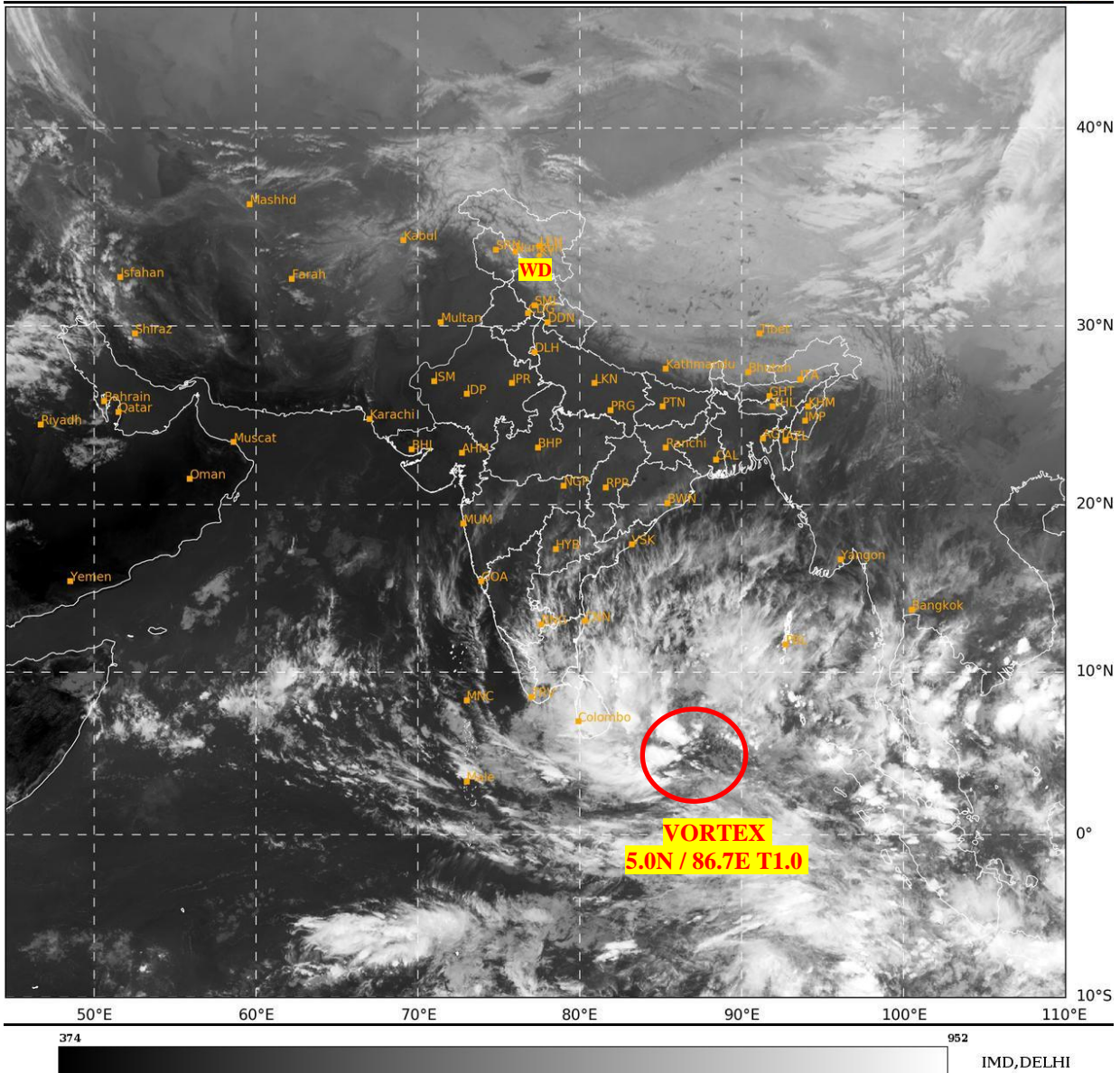




**SATELLITE BULLETIN BASED ON SATELLITE
IMAGERIES AND PRODUCTS**
24.11.2024 TIME 1200 UTC

SAT : INSAT-3DR IMG
IMG_TIR1 10.8 um
LIC Mercator

24-11-2024/(1145 to 1212) GMT
24-11-2024/(1715 to 1742) IST



TCIN50 DEMS 241200

SATELLITE BULLETIN BASED ON INSAT-3DR PIC OF 241145 UTC (.)

REGION COVERED BETWEEN LAT 50.0°N TO 35.0°S AND LONG 40.0°E TO 125.0°E (.)

SALIENT FEATURES:-

VORTEX OVER SOUTH EAST BAY ADJOINING EQUATORIAL INDIAN OCEAN:-

VORTEX OVER SOUTH EAST BAY ADJOINING EQUATORIAL INDIAN OCEAN CENTERED WITHIN **HALF A DEGREE OF 5.0N / 86.7E** (.) INTENSITY **T1.0** (.) ASSTD SCT TO BKN LOW/MED CLOUDS WITH EMBDD INT TO V INT CONVTN OVER SOUTH BAY ADJ EQUATORIAL INDIAN OCEAN BET LAT 4.0N TO 12.0N AND LONG 82.0E TO 92.0E (.) MINIMUM CTT **MINUS 80-93 DEG CEL** (.)

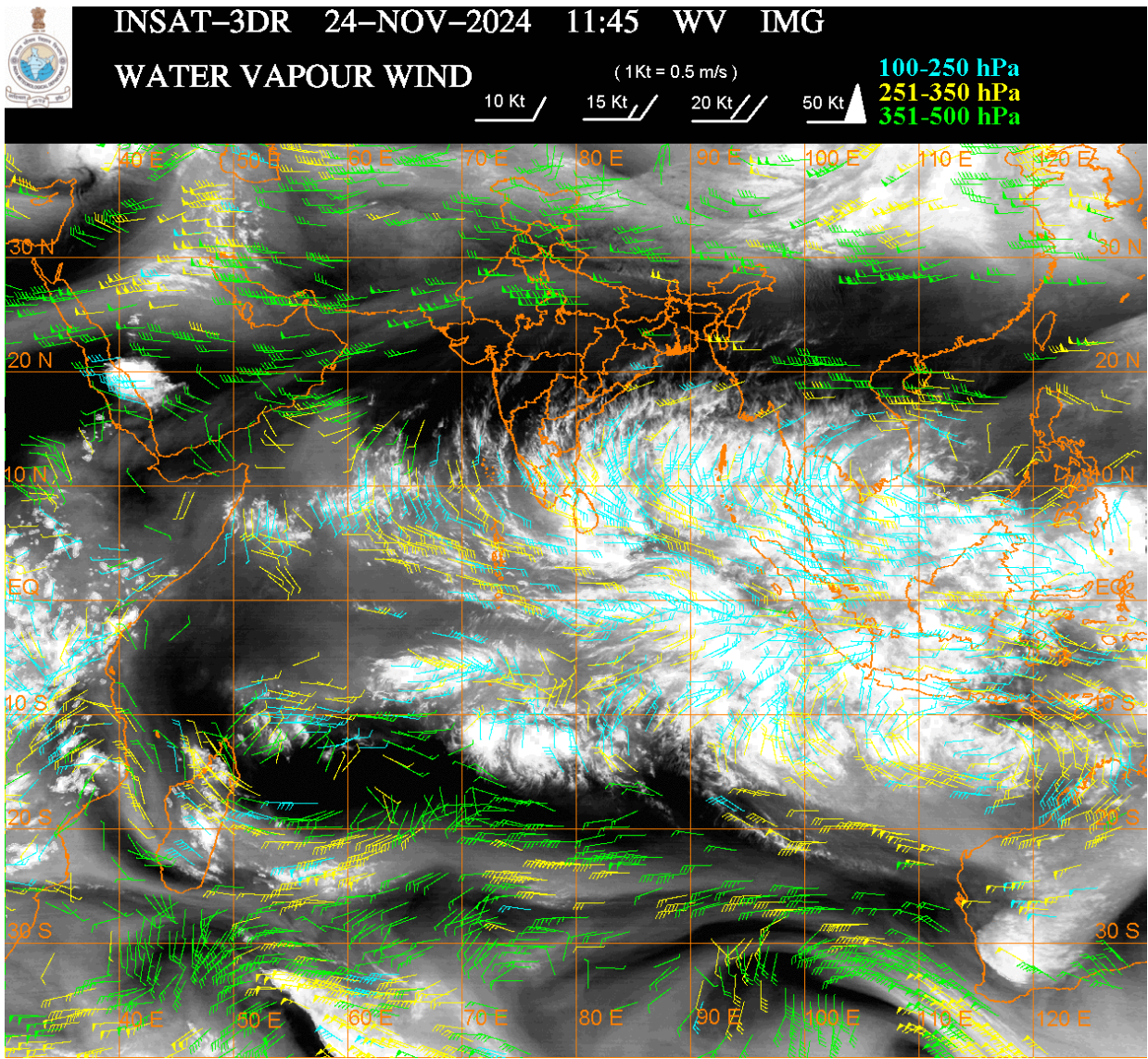
WESTERN DISTURBANCE:-

SCT MULTILAYERED CLOUDS OVER EXT N PAK J&K LADAKH TIBET ADJ CHINA IN ASSW **WD** OVER THE AREA (.)

CONVECTIVE / THUNDERSTORM ACTIVITY:-

INTENSE TO VERY INTENSE CONVECTIVE / THUNDERSTORM ACTIVITY OBSERVED OVER ANDAMAN & NICOBAR ILS AREA (MINIMUM CTT **MINUS 80-93 DEG CEL**) (.)

**MODERATE TO INTENSE CONVECTIVE / THUNDERSTORM ACTIVITY OBSERVED OVER TN
KER LKSDP ILS AREA (MINIMUM CTT MINUS 45-55 DEG CEL) (.)**



CLOUDS DESCRIPTION WITHIN INDIA:-

NORTH:-

SCT LOW/MED CLOUDS WITH EMBDD ISOL WK TO MOD CONVTN OVER LADAKH J&K N HP N UTRKND (.) ISOL LOW/MED CLOUDS OVER S HP S UTRKND (.)

EAST:-

SCT LOW/MED CLOUDS WITH EMBDD ISOL WK CONVTN OVER ORS COTL GWB N SHWB SKM ARUPR ASSAM (.) ISOL TO SCT LOW/MED CLOUDS OVER JHRKND S CHTGH REST NE STATES (.)

WEST:-

SCT LOW/MED CLOUDS WITH EMBDD ISOL WK CONVTN OVER MRTHWD N M MAHA (.) ISOL TO SCT LOW/MED CLOUDS OVER E RAJ REST MAHA & GOA (.)

SOUTH:-

SCT LOW/MED CLOUDS WITH EMBDD INT TO V INT CONVTN OVER ANDAMAN & NICOBAR ILS AREA (.) SCT LOW/MED CLOUDS WITH EMBDD MOD TO INT CONVTN OVER TN KER LKSDP ILS AREA AND ISOL WK TO MOD CONVTN OVER SIK RYLSM COTL AP (.) SCT LOW/MED CLOUDS OVER REST KRNTK TLNGN (.)

ARABIAN SEA:-

SCT LOW/MED CLOUDS WITH EMBDD MOD TO INT CONVTN OVER SOUTH ARSEA LKSDP ILS AREA MALDIVES & COMORIN AREA AND ISOL WK TO MOD CONVTN OVER CENTRAL ARSEA (.)

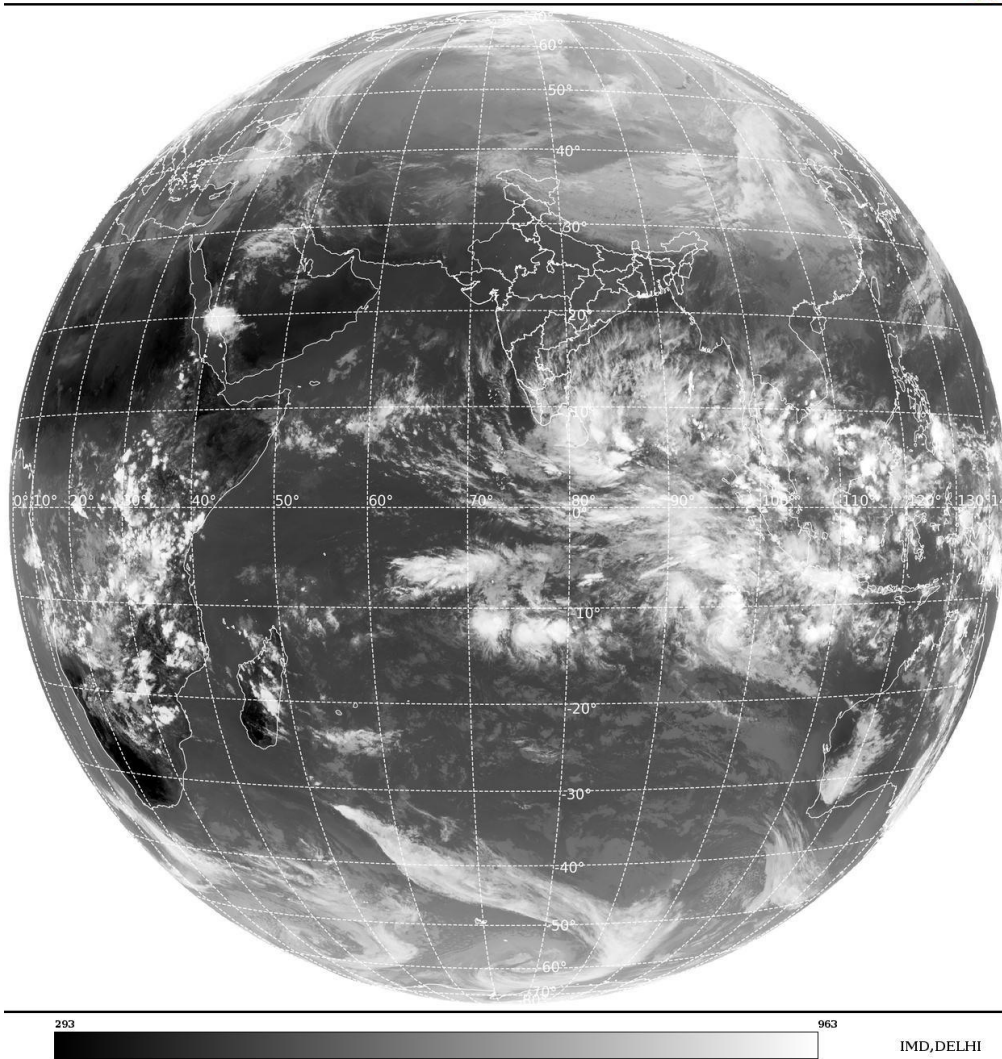
BAY OF BENGAL & ANDAMAN SEA:-

SCT TO BKN LOW/MED CLOUDS WITH EMBDD INT TO V INT CONVTN OVER SOUTH BAY & ANDAMAN SEA (MINIMUM **CTT MINUS 80-93 DEG CEL**) (.) SCT LOW/MED CLOUDS WITH EMBDD MOD TO INT CONVTN OVER CENTRAL BAY AND ISOL WK TO MOD CONVTN OVER NORTH BAY (.)

CLOUDS DESCRIPTION OUTSIDE INDIA:-

SAT : INSAT-3DR IMG
Thermal Infrared1 Count 10.8 um
L1B FULL DISK

24-11-2024/(1145 to 1212) GMT
24-11-2024/(1715 to 1742) IST



SCT LOW/MED CLOUDS WITH EMBDD MOD TO INT CONVTN OVER SRI LANKA PALK STR GULF OF MANNAR MALDIVES TIBET CHINA YELLOW SEA EAST CHINA SEA MYANMAR THAILAND GULF OF THAILAND CAMBODIA VIETNAM SUMATRA STR OF MALACCA MALAYSIA BORNEO SOUTH CHINA SEA JAVA ILS & SEA CELEBES ILS & SEA S PHILIPPINES MADAGASCAR MOZAMBIQUE CHANNEL AND OVER INDIAN OCEAN BET LAT 5.0N TO 20.0S LONG 50.0E TO 120.0E (.)

TOO 24/1840 HRS IST=

NNNN

LEGEND:-

REGION	NORTH	J&K HP PJB HARY DLH UP UTRKND
	EAST	BHR JHRKND CHTGH ORS WB SKM NORTH- EAST STATES
	WEST	RAJ MP GUJ MAHA GOA
	SOUTH	TLNGN AP KRNTK KER TN LKSDP ANDAMAN & NICOBAR ILS

CLOUD DISTRIBUTION	ISOL	ISOLATED (LESS THAN 25%)	
	SCT	SCATTERED (25 TO 50%)	
	BKN	BROKEN (51 TO 75%)	
	SLD	SOLID (GREATER THAN 75%)	
CLOUDS TOP TEMPERATURE	CTT	CLOUD TOP TEMPERATURE	
CONVECTION	WK CONVTN	WEAK CONVECTION (CTT GREATER THAN -25°C)	
	MOD CONVTN	MODERATE CONVECTION (CTT BETWEEN -25°C TO -40°C)	
	INT CONVTN	INTENSE CONVECTION (CTT BETWEEN -41°C TO -70°C)	
	V INT CONVTN	VERY INTENSE CONVECTION (CTT LESS THAN -70°C)	
METEOROLOGICAL SUB- DIVISIONS, STATES & UNION TERRITORIES	ARUPR	ARUNACHAL PRADESH	
	BHR	BIHAR	
	CHTGH	CHHATTISGARH	
	COTL AP	COASTAL ANDHRA PRADESH	
	COTL KRNTK	COASTAL KARNATAKA	
	COTL ORS	COASTAL ORISSA	
	GUJ	GUJARAT	
	GWB	GANGETIC WEST BENGAL	
	HARY	HARYANA	
	DLH	DELHI	
	HP	HIMACHAL PRADESH	
	J&K	JAMMU AND KASHMIR	
	JHRKND	JHARKHAND	
	KER	KERALA	
	KKN	KONKAN	
	LKSDP	LAKSHADWEEP	
	M MAHA	MADHYA MAHARASHTRA	
	MAHA	MAHARASHTRA	
	MANI	MANIPUR	
	MEGHA	MEGHALAYA	
	MIZO	MIZORAM	
	MP	MADHYA PRADESH	
		MRTHWD	MARATHWADA
		NAGA	NAGALAND
N COTL AP		NORTH COASTAL ANDHRA PRADESH	
NIK		NORTH INTERIOR KARNATAKA	
ORS		ORISSA	
PJB		PUNJAB	
RAJ		RAJASTHAN	
RYLSM		RAYALASEEMA	
SAU & KUTCH		SAURASHTRA & KUTCH	
SHWB		SUB-HIMALAYAN WEST BENGAL	
SIK		SOUTH INTERIOR KARNATAKA	
SKM		SIKKIM	

	TLNGN	TELANGANA
	TN	TAMIL NADU
	TRP	TRIPURA
	UP	UTTAR PRADESH
	UTRKND	UTTARAKHAND
	VID	VIDHARBHA
	SHWB	SUB HIMALAYAN WEST BENGAL
	GWB	GANGETIC WEST BENGAL
	ARSEA	ARABIAN SEA
	ILS	ISLANDS
MISCELLANEOUS	ASSW	IN ASSOCIATION WITH
	ASSTD	ASSOCIATED
	LLC	LOW LEVEL CIRCULATION
	EMBDD	EMBEDDED
	N/HOOD	NEIGHBOURHOOD
	EXT	EXTREME