



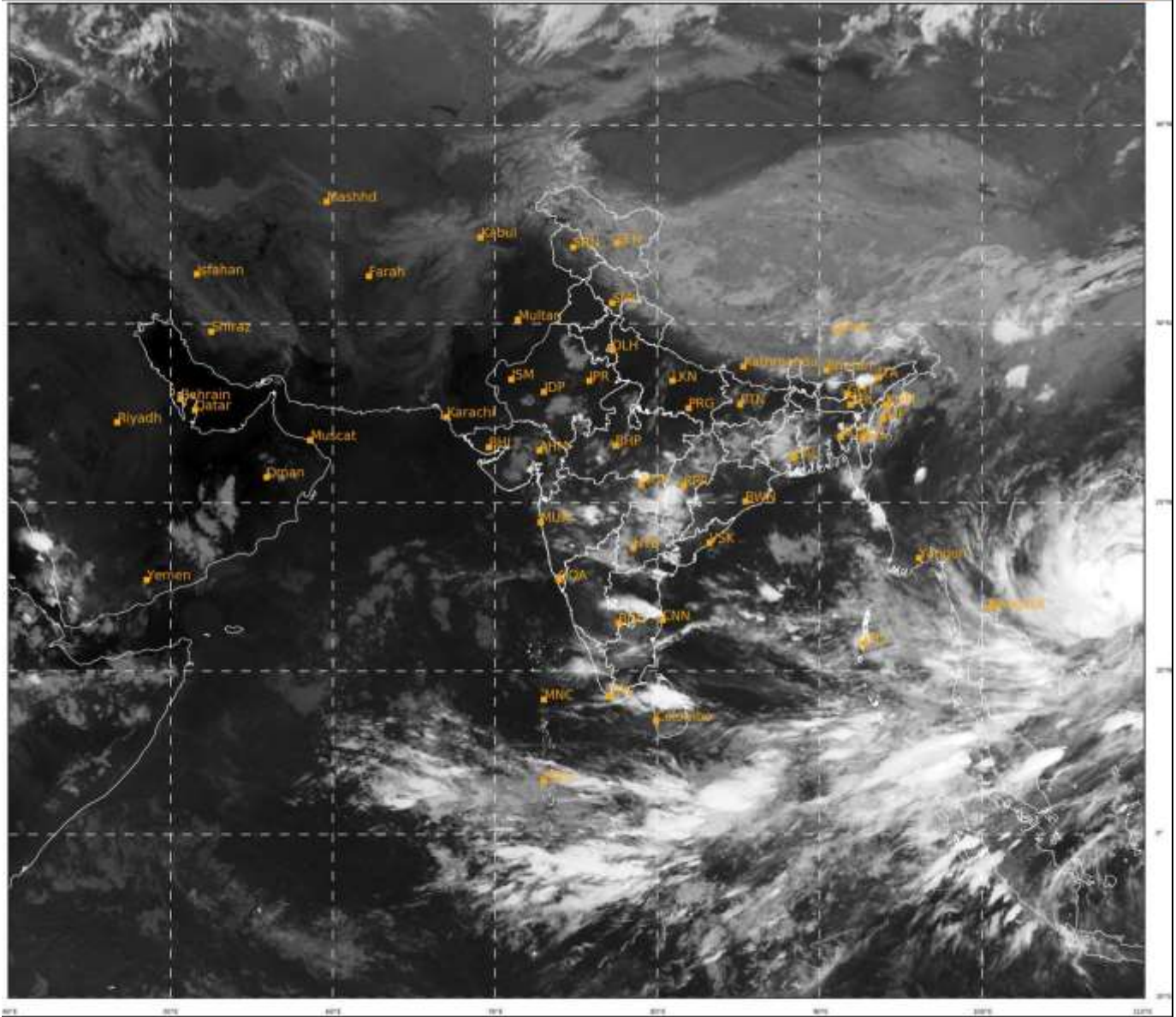
भारत मौसम विज्ञान विभाग  
पृथ्वी विज्ञान मंत्रालय  
India Meteorological Department  
Ministry of Earth Sciences



**SATELLITE BULLETIN BASED ON SATELLITE  
IMAGERIES AND PRODUCTS**  
**27.09.2022 TIME 1800 UTC**

SAT : INSAT-3DR IMG  
IMG\_TIR1 10.8 um  
LIC Mercator

27-09-2022/(1645 to 1712) GMT  
27-09-2022/(2215 to 2242) IST



442

954

IMD, DELHI

TCIN50 DEMS 271800

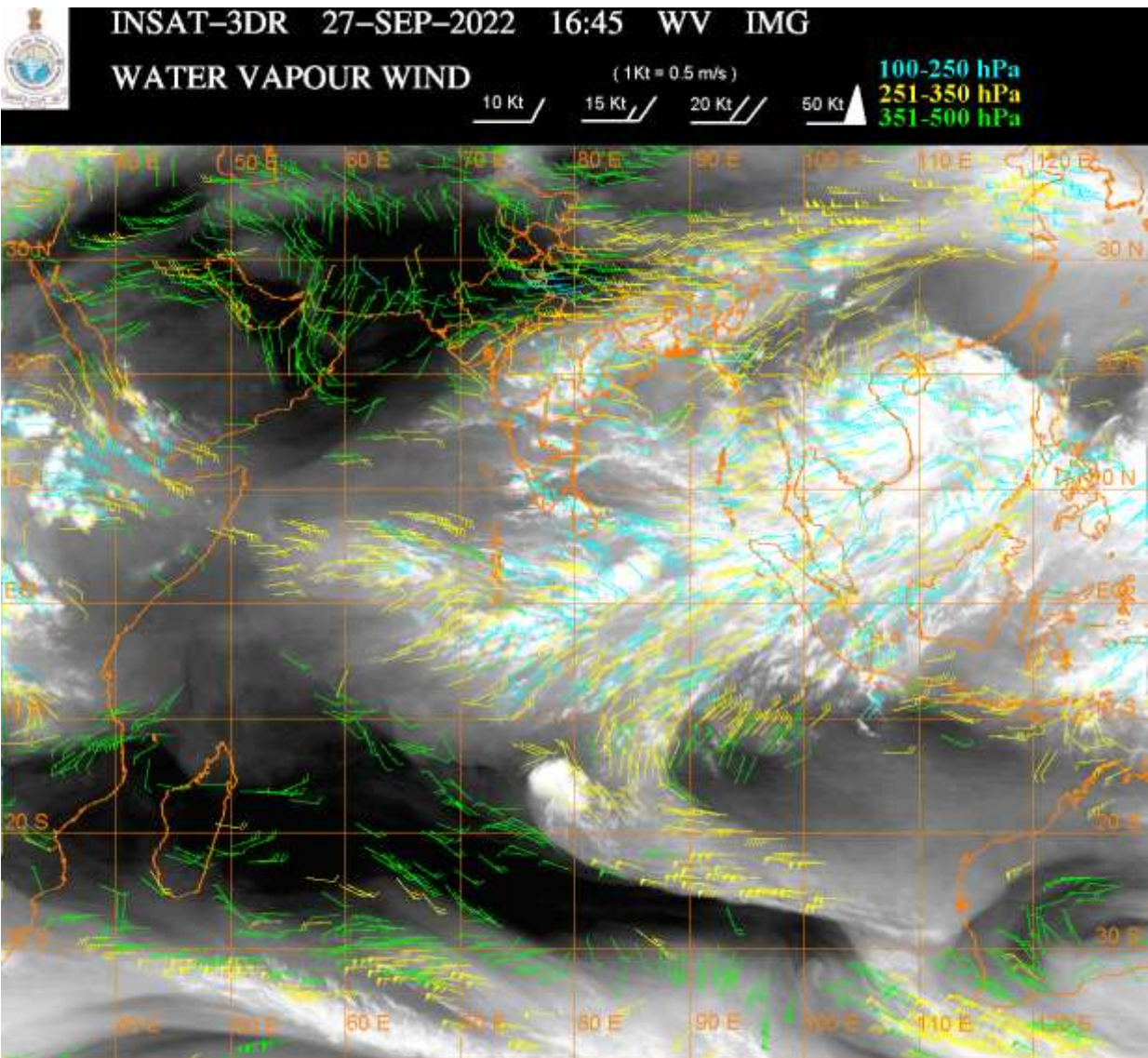
SATELLITE BULLETIN BASED ON INSAT-3DR PIC OF 271645 UTC (.)

REGION COVERED BETWEEN LAT 50.0°N TO 35.0°S AND LONG 40.0°E TO 125.0°E (.)

**SALIENT FEATURES:-**

**INTENSE CONVECTIVE CLOUDS:-**

INTENSE CONVECTIVE CLOUDS OBSERVED OVER JHRKND CHTGH WC ORS GWB NE STATES  
S MP VID MRTHWD MADHYA MAHA E NIK NE SIK TLNGN RYLSM COTL AP KER TN  
ANDAMAN & NICOBAR ILS (.)



**CLOUDS DESCRIPTION WITHIN INDIA:-**

**NORTH:-**

SCT LOW/MED CLOUDS WITH EMBDD WK TO MOD CONVTN OVER LADAKH N HP N UTRKND SC HARY EXT SE UP (.) SCT LOW/MED CLOUDS OVER J&K S HP S UTRKND SW & REST E UP (.)

**EAST:-**

SCT TO BKN LOW/MED CLOUDS WITH EMBDD INT TO V INT CONVTN OVER SW ARUPR ADJ ASSAM (MINIMUM **CTT MINUS 85 DEG CEL**) (.) SCT TO BKN LOW/MED CLOUDS WITH EMBDD MOD TO INT CONVTN OVER SW JHRKND CHTGH WC ORS GWB REST NE STATES & BD (.) SCT LOW/MED CLOUDS WITH EMBDD WK TO MOD CONVTN OVER BHR REST JHRKND REST ORS SHWB SKM (.)

**WEST:-**

SCT LOW/MED CLOUDS WITH EMBDD INT TO V INT CONVTN OVER SE MP ADJ VID MRTHWD (MINIMUM **CTT MINUS 75 DEG CEL**) AND MOD TO INT CONVTN OVER REST S MP MADHYA MAHA REST VID (.) SCT LOW/MED CLOUDS WITH EMBDD ISOL WK CONVTN OVER RAJ N MP GUJ KKN (.) SCT LOW/MED CLOUDS OVER GOA (.)

**SOUTH:-**

SCT TO BKN LOW/MED CLOUDS WITH EMBDD INT TO V INT CONVTN OVER SE TLNGN (MINIMUM **CTT MINUS 75 DEG CEL**) S RYLSM C & S COTL AP EXT NE TN (MINIMUM **CTT MINUS 85 DEG CEL**) (.) SCT LOW/MED CLOUDS WITH EMBDD MOD TO INT CONVTN OVER REST TLNGN NE SIK N RYLSM S KER REST TN ANDAMAN & NICOBAR ILS (.) SCT LOW/MED CLOUDS WITH EMBDD WK TO MOD CONVTN OVER NIK REST SIK REST COTL AP N KER (.) SCT LOW/MED CLOUDS OVER COTL KRNTK LKSDP ILS (.)

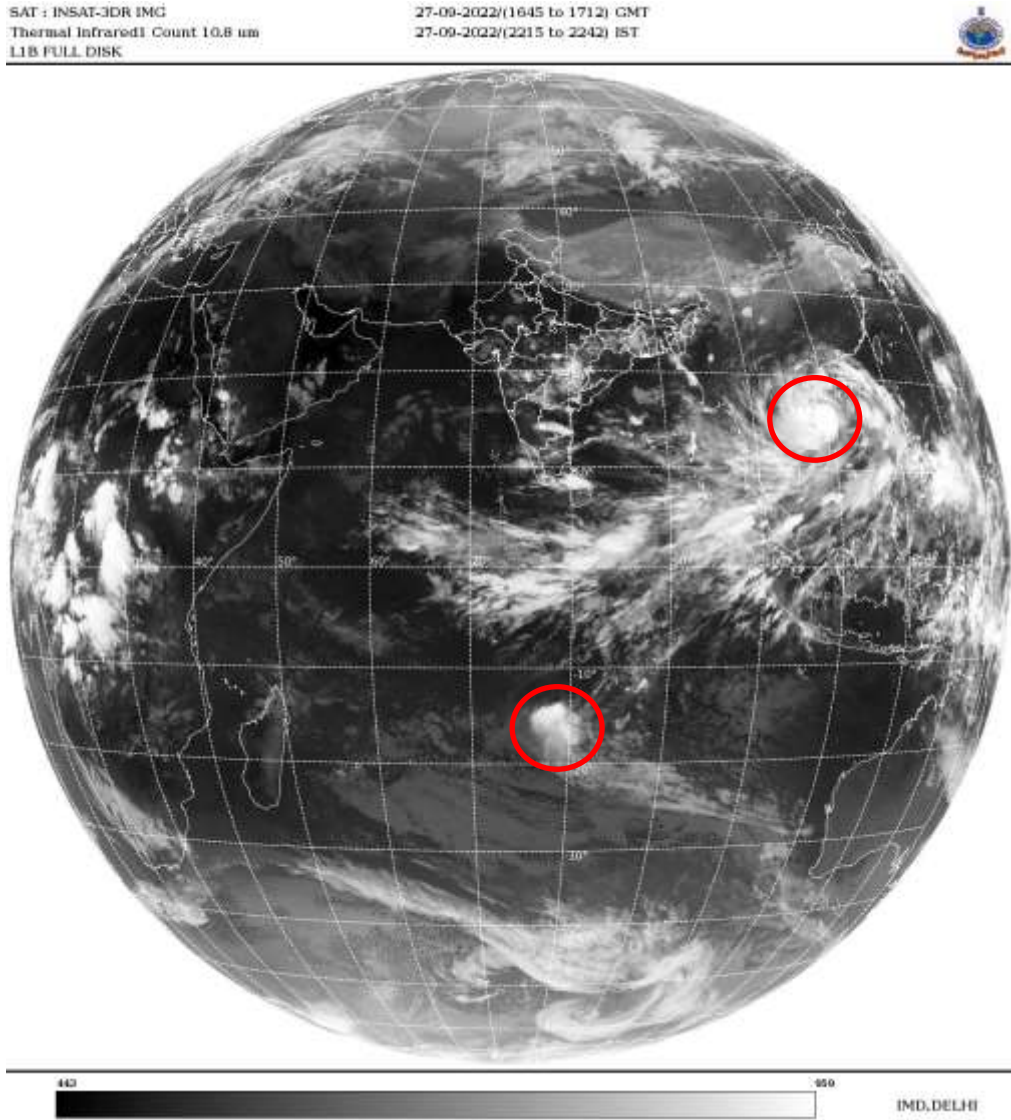
**ARABIAN SEA:-**

SCT LOW/MED CLOUDS WITH EMBDD MOD TO INT CONVTN OVER SOUTH ARSEA AND COMORIN AREA (.) SCT LOW/MED CLOUDS WITH EMBDD ISOL WK CONVTN OVER CENTRAL ARSEA (.)

**BAY OF BENGAL & ANDAMAN SEA:-**

SCT LOW/MED CLOUDS WITH EMBDD INT TO V INT CONVTN OVER SW BAY ADJ SRI LANKA COAST SE BAY AND ANDAMAN SEA (.) SCT LOW/MED CLOUDS WITH EMBDD MOD TO INT CONVTN OVER NE BAY CENTRAL BAY REST SOUTH BAY ARAKAN COAST AND TENASSERIM COAST (.) SCT LOW/MED CLOUDS WITH EMBDD ISOL WK CONVTN OVER NW BAY (.)

**CLOUDS DESCRIPTION OUTSIDE INDIA:-**



**VORTEX (NORU) OVER SOUTH CHINA SEA & N/HOOD:-**

VORTEX (NORU) OVER S CHINA SEA & N/HOOD (AREA-F05) CENTERED NEAR **16.1N / 108.5E** (.) **INTENSITY T4.5/5.5** (.) CORRESPONDING MAXIMUM SUSTAINED WINDS OF **64-89 KTS** (.) ASSTD BKN LOW/MED CLOUDS WITH EMBDD INT TO V INT CONVTN OVER AREA BET LAT 12.0N TO 18.0N LONG 105.0E TO 112.0E (.)

**VORTEX (ASHLEY) OVER SOUTH INDIAN OCEAN:-**

VORTEX (ASHLEY) OVER SOUTH INDIAN OCEAN (AREA-E80) CENTERED NEAR **13.5S / 78.7E** (.) **INTENSITY T2.5/2.5** (.) CORRESPONDING MAXIMUM SUSTAINED WINDS OF **34-47 KTS** (.) ASSTD BKN LOW/MED CLOUDS WITH EMBDD INT TO V INT CONVTN OVER AREA BET LAT 13.5S TO 18.0S LONG 76.0E TO 81.5E (.)

SCT LOW/MED CLOUDS WITH EMBDD MOD TO INT CONVTN OVER SRI LANKA PALK STR GULF OF MANNAR MALDIVES NEPAL BHUTAN TIBET CHINA YELLOW SEA MYANMAR THAILAND GULF OF THAILAND CAMBODIA LAOS VIETNAM GULF OF TONKIN HAINAN SUMATRA STR OF MALACCA MALAYSIA BORNEO SOUTH CHINA SEA JAVA ILS & SEA CELEBES ILS & SEA PHILIPPINES SULU SEA AND OVER INDIAN OCEAN BET LAT 5.0N TO 10.0S EAST OF LONG 60.0E (.)

TOO 27/2350 HRS IST=

NNNN

**LEGEND:-**

<b>REGION</b>	<b>NORTH</b>	<b>J&amp;K HP PJB HARY DLH UP UTRKND</b>
	<b>EAST</b>	<b>BHR JHRKND CHTGH OR WB SKM NORTH- EAST STATES</b>
	<b>WEST</b>	<b>RAJ MP GUJ MAHA GOA</b>
	<b>SOUTH</b>	<b>TLNGN AP KRNTK KER TN LKSDP ANDAMAN &amp; NICOBAR ILS</b>

<b>CLOUD DISTRIBUTION</b>	<b>ISOL</b>	<b>ISOLATED (LESS THAN 25%)</b>
	<b>SCT</b>	<b>SCATTERED (25 TO 50%)</b>
	<b>BKN</b>	<b>BROKEN (51 TO 75%)</b>
	<b>SLD</b>	<b>SOLID (GREATER THAN 75%)</b>
<b>CLOUDS TOP TEMPERATURE</b>	<b>CTT</b>	<b>CLOUD TOP TEMPERATURE</b>
<b>CONVECTION</b>	<b>WK CONVTN</b>	<b>WEAK CONVECTION (CTT GREATER THAN -25°C)</b>
	<b>MOD CONVTN</b>	<b>MODERATE CONVECTION (CTT BETWEEN -25°C TO -40°C)</b>
	<b>INT CONVTN</b>	<b>INTENSE CONVECTION (CTT BETWEEN -41°C TO -70°C)</b>
	<b>V INT CONVTN</b>	<b>VERY INTENSE CONVECTION (CTT LESS THAN -70°C)</b>
<b>METEOROLOGICAL SUB-DIVISIONS, STATES &amp; UNION TERRITORIES</b>	<b>ARUPR</b>	<b>ARUNACHAL PRADESH</b>
	<b>BHR</b>	<b>BIHAR</b>
	<b>CHTGH</b>	<b>CHHATTISGARH</b>
	<b>COTL AP</b>	<b>COASTAL ANDHRA PRADESH</b>
	<b>COTL KRNTK</b>	<b>COASTAL KARNATAKA</b>
	<b>COTL ORS</b>	<b>COASTAL ORISSA</b>
	<b>GUJ</b>	<b>GUJARAT</b>
	<b>GWB</b>	<b>GANGETIC WEST BENGAL</b>
	<b>HARY</b>	<b>HARYANA</b>
	<b>DLH</b>	<b>DELHI</b>
	<b>HP</b>	<b>HIMACHAL PRADESH</b>
	<b>J&amp;K</b>	<b>JAMMU AND KASHMIR</b>
	<b>JHRKND</b>	<b>JHARKHAND</b>
	<b>KER</b>	<b>KERALA</b>
	<b>KKN</b>	<b>KONKAN</b>
	<b>LKSDP</b>	<b>LAKSHADWEEP</b>
	<b>M MAHA</b>	<b>MADHYA MAHARASHTRA</b>
	<b>MAHA</b>	<b>MAHARASHTRA</b>
	<b>MANI</b>	<b>MANIPUR</b>
	<b>MEGHA</b>	<b>MEGHALAYA</b>
	<b>MIZO</b>	<b>MIZORAM</b>
	<b>MP</b>	<b>MADHYA PRADESH</b>
	<b>MRTHWD</b>	<b>MARATHWADA</b>
	<b>NAGA</b>	<b>NAGALAND</b>
	<b>N COTL AP</b>	<b>NORTH COASTAL ANDHRA PRADESH</b>

	<b>NIK</b>	<b>NORTH INTERIOR KARNATAKA</b>
	<b>ORS</b>	<b>ORISSA</b>
	<b>PJB</b>	<b>PUNJAB</b>
	<b>RAJ</b>	<b>RAJASTHAN</b>
	<b>RYLSM</b>	<b>RAYALASEEMA</b>
	<b>SAU &amp; KUTCH</b>	<b>SAURASHTRA &amp; KUTCH</b>
	<b>SHWB</b>	<b>SUB-HIMALAYAN WEST BENGAL</b>
	<b>SIK</b>	<b>SOUTH INTERIOR KARNATAKA</b>
	<b>SKM</b>	<b>SIKKIM</b>
	<b>TLNGN</b>	<b>TELANGANA</b>
	<b>TN</b>	<b>TAMIL NADU</b>
	<b>TRP</b>	<b>TRIPURA</b>
	<b>UP</b>	<b>UTTAR PRADESH</b>
	<b>UTRKN</b>	<b>UTTARAKHAND</b>
	<b>VID</b>	<b>VIDHARBHA</b>
	<b>SHWB</b>	<b>SUB HIMALAYAN WEST BENGAL</b>
	<b>GWB</b>	<b>GANGETIC WEST BENGAL</b>
	<b>ARSEA</b>	<b>ARABIAN SEA</b>
	<b>ILS</b>	<b>ISLANDS</b>
<b>MISCELLANEOUS</b>	<b>ASSW</b>	<b>IN ASSOCIATION WITH</b>
	<b>ASSTD</b>	<b>ASSOCIATED</b>
	<b>LLC</b>	<b>LOW LEVEL CIRCULATION</b>
	<b>EMBDD</b>	<b>EMBEDDED</b>
	<b>N/HOOD</b>	<b>NEIGHBOURHOOD</b>
	<b>EXT</b>	<b>EXTREME</b>