



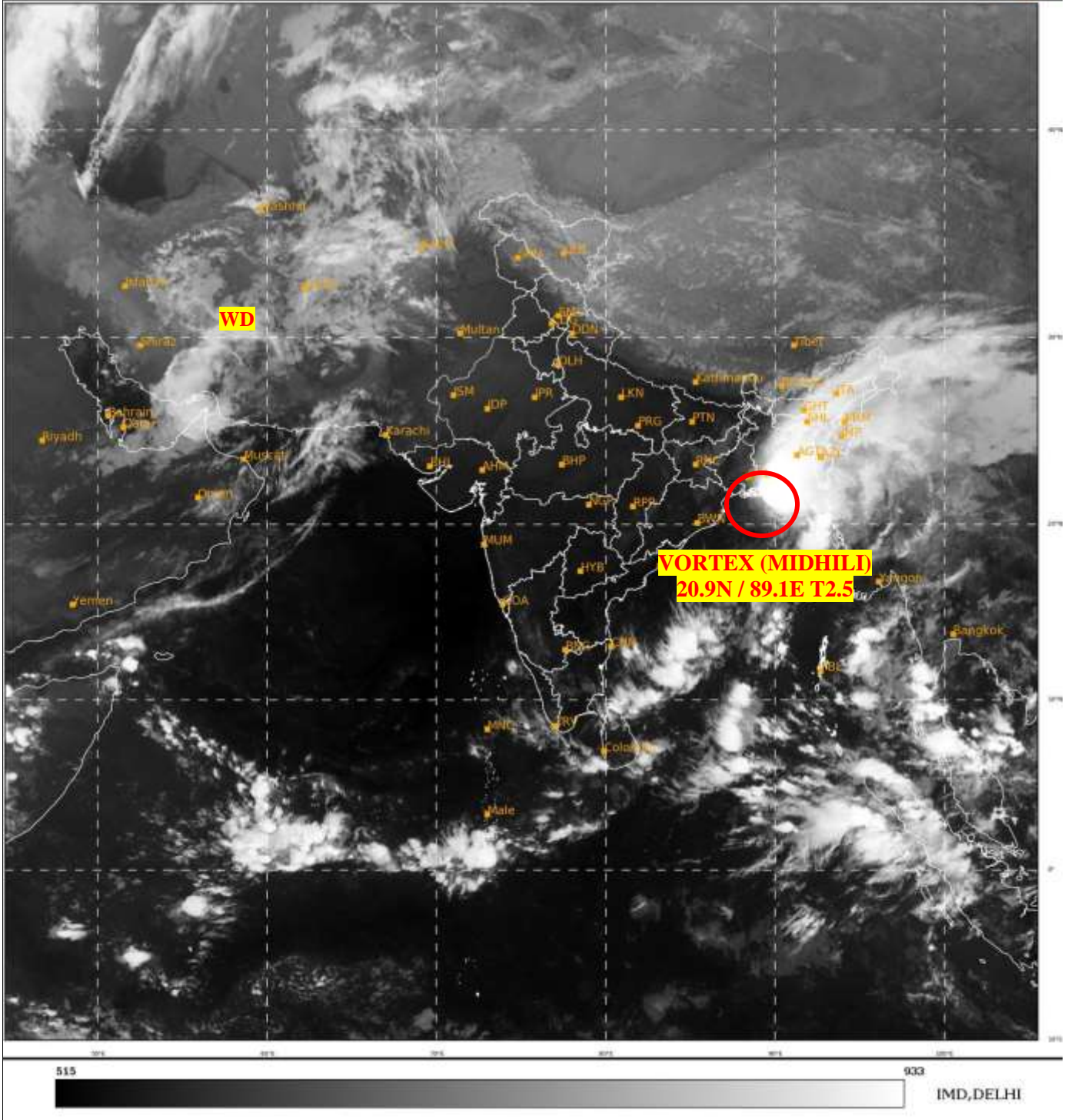
भारत मौसम विज्ञान विभाग
पृथ्वी विज्ञान मंत्रालय
India Meteorological Department
Ministry of Earth Sciences



**SATELLITE BULLETIN BASED ON SATELLITE
IMAGERIES AND PRODUCTS**
17.11.2023 TIME 0300 UTC

SAT : INSAT-3D IMG
IMG_TIR1 10.8 um
LIC Mercator

17-11-2023/(0300 to 0327) GMT
17-11-2023/(0830 to 0857) IST



TCIN50 DEMS 170300

SATELLITE BULLETIN BASED ON INSAT-3D PIC OF 170300 UTC (.)

REGION COVERED BETWEEN LAT 50.0°N TO 35.0°S AND LONG 40.0°E TO 125.0°E (.)

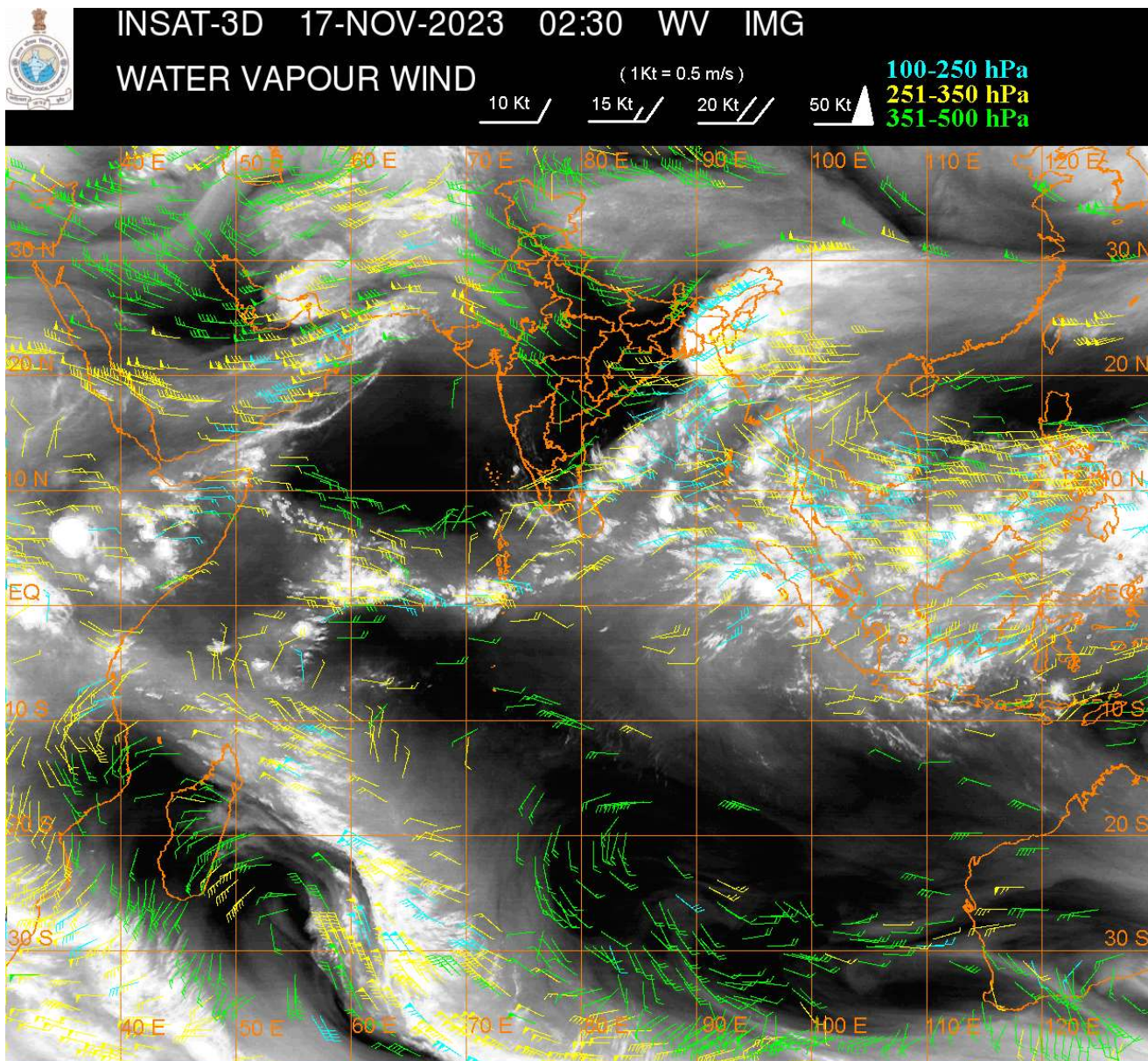
SALIENT FEATURES:-

VORTEX (MIDHILI) OVER NORTH-WEST BAY & N/HOOD:-

VORTEX (MIDHILI) OVER NW BAY & N/HOOD CENTERED NEAR **20.9N / 89.1E** (.) INTENSITY **T2.5/2.5** (.) **SHEAR PATTERN** (.) ASSTD BKN LOW/MED CLOUDS WITH EMBDD INT TO V INT CONVTN OVER NORTH BAY BET LAT 20.5N TO 23.0N LONG 89.0E TO 92.0E SOUTH BANGLADESH NORTH MYANMAR (MINIMUM **CTT MINUS 90 DEG CEL**) TRP (MINIMUM **CTT MINUS 75 DEG CEL**) AND MOD TO INT CONVTN OVER SE GWB REST NE STATES NORTH BANGLADESH (.)

WESTERN DISTURBANCE:-

SCT MULTILAYERED CLOUDS OVER E IRAN PERSIAN GULF AFGAN ADJ PAK AND N/HOOD IN ASSW **WD** OVER THE AREA (.)



CLOUDS DESCRIPTION WITHIN INDIA:-

NORTH:-

SCT LOW/MED CLOUDS WITH EMBDD ISOL WK TO MOD CONVTN OVER LADAKH N HP N UTRKND (.) ISOL TO SCT LOW/MED CLOUDS OVER N J&K S HP CE NTRAL & EXT E UP (.)

EAST:-

SCT TO BKN LOW/MED CLOUDS WITH EMBDD INT TO V INT CONVTN OVER TRP (MINIMUM **CTT MINUS 75 DEG CEL**) S BD (MINIMUM **CTT MINUS 85 DEG CEL** (.) SCT TO BKN LOW/MED CLOUDS WITH EMBDD MOD TO INT CONVTN OVER SE GWB REST NE STATES N BD (.) SCT LOW/MED CLOUDS WITH EMBDD ISOL WK TO MOD CONVTN OVER SHWB SKM (.) SCT LOW/MED CLOUDS OVER BHR JHRKND N CHTGH ORS REST GWB (.)

WEST:-

NO SIGNIFICANT CLOUDS OVER RAJ MP GUJ MAHA & GOA (.)

SOUTH:-

SCT LOW/MED CLOUDS WITH EMBDD MOD TO INT CONVTN OVER NICOBAR ILS AND ISOL WK CONVTN OVER S KER EC TN (.) SCT LOW/MED CLOUDS OVER KRNTK COTL AP N KER REST TN LKSDP ILS ANDAMAN ILS (.)

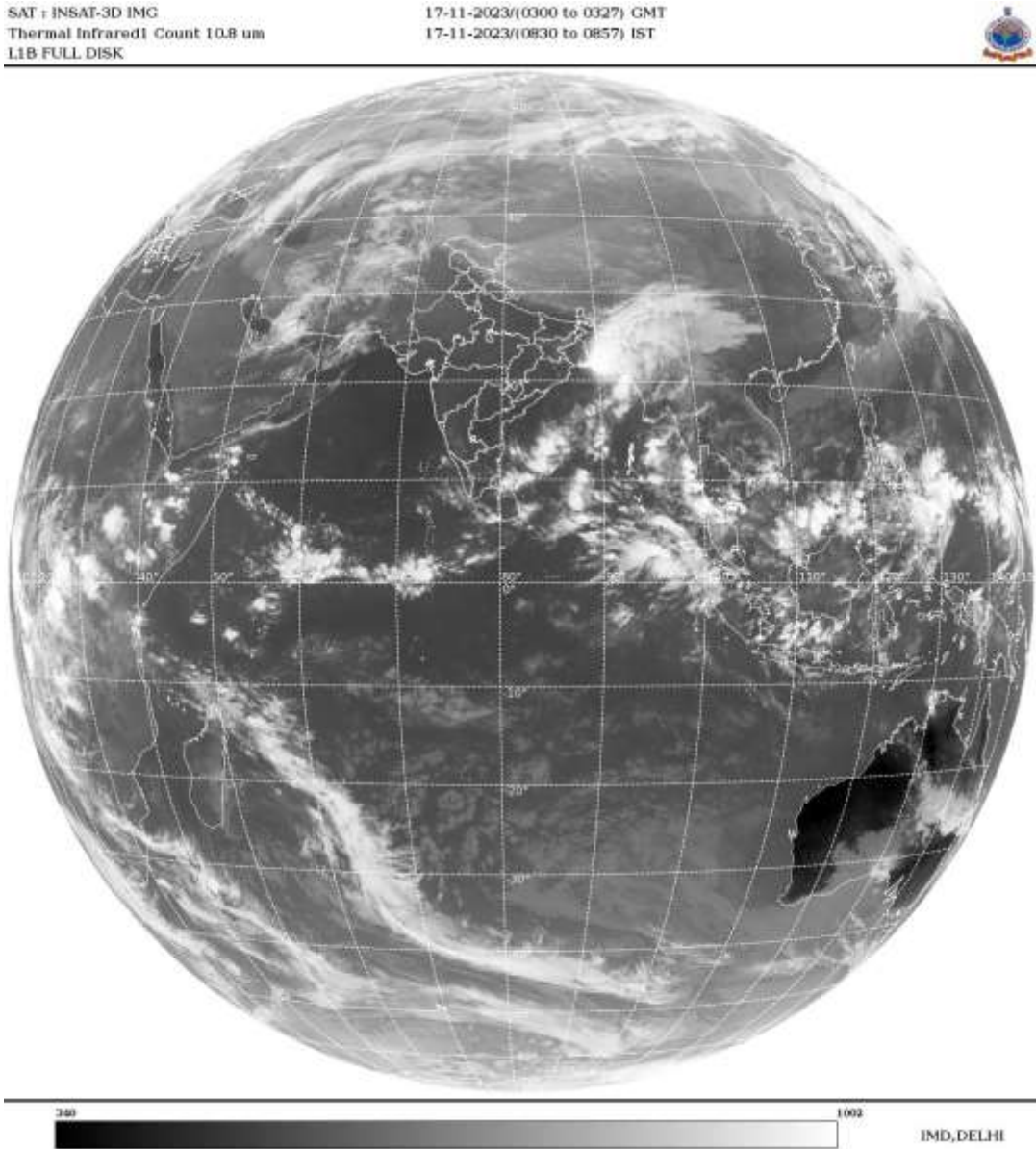
ARABIAN SEA:-

SCT LOW/MED CLOUDS WITH EMBDD MOD TO INT CONVTN OVER NW & WC ARSEA SOUTH ARSEA & COMORIN AREA (.) SCT LOW/MED CLOUDS WITH EMBDD ISOL WK TO MOD CONVTN OVER NE ARSEA AND LKSDP ILS AREA (.)

BAY OF BENGAL & ANDAMAN SEA:-

SCT TO BKN LOW/MED CLOUDS WITH EMBDD INT TO V INT CONVTN OVER NE ADJ NW BAY AND N ANDAMAN SEA (.) SCT LOW/MED CLOUDS WITH EMBDD MOD TO INT CONVTN OVER CENTRAL & SOUTH BAY S ANDAMAN SEA (.)

CLOUDS DESCRIPTION OUTSIDE INDIA:-



SCT LOW/MED CLOUDS WITH EMBDD MOD TO INT CONVTN OVER SRI LANKA PALK STR GULF OF MANNAR S MALDIVES BHUTAN TIBET CHINA MYANMAR THAILAND GULF OF THAILAND CAMBODIA LAOS VIETNAM SUMATRA STR OF MALACCA MALAYSIA BORNEO SOUTH CHINA SEA JAVA ILS & SEA CELEBES ILS & SEA PHILIPPINES N MADAGASCAR AND OVER INDIAN OCEAN BET LAT 5.0N TO 5.0S LONG 50.0E TO 100.0E AND BET LAT 5.0S TO 35.0S LONG 40.0E TO 70.0E (.)

TOO 17/1015 HRS IST=

NNNN

LEGEND:-

REGION	NORTH	J&K HP PJB HARY DLH UP UTRKND
	EAST	BHR JHRKND CHTGH OR WB SKM NORTH- EAST STATES
	WEST	RAJ MP GUJ MAHA GOA
	SOUTH	TLNGN AP KRNTK KER TN LKSDP ANDAMAN & NICOBAR ILS

CLOUD DISTRIBUTION	ISOL	ISOLATED (LESS THAN 25%)	
	SCT	SCATTERED (25 TO 50%)	
	BKN	BROKEN (51 TO 75%)	
	SLD	SOLID (GREATER THAN 75%)	
CLOUDS TOP TEMPERATURE	CTT	CLOUD TOP TEMPERATURE	
CONVECTION	WK CONVTN	WEAK CONVECTION (CTT GREATER THAN -25°C)	
	MOD CONVTN	MODERATE CONVECTION (CTT BETWEEN -25°C TO -40°C)	
	INT CONVTN	INTENSE CONVECTION (CTT BETWEEN -41°C TO -70°C)	
	V INT CONVTN	VERY INTENSE CONVECTION (CTT LESS THAN -70°C)	
METEOROLOGICAL SUB- DIVISIONS, STATES & UNION TERRITORIES	ARUPR	ARUNACHAL PRADESH	
	BHR	BIHAR	
	CHTGH	CHHATTISGARH	
	COTL AP	COASTAL ANDHRA PRADESH	
	COTL KRNTK	COASTAL KARNATAKA	
	COTL ORS	COASTAL ORISSA	
	GUJ	GUJARAT	
	GWB	GANGETIC WEST BENGAL	
	HARY	HARYANA	
	DLH	DELHI	
	HP	HIMACHAL PRADESH	
	J&K	JAMMU AND KASHMIR	
	JHRKND	JHARKHAND	
	KER	KERALA	
	KKN	KONKAN	
	LKSDP	LAKSHADWEEP	
	M MAHA	MADHYA MAHARASHTRA	
	MAHA	MAHARASHTRA	
	MANI	MANIPUR	
	MEGHA	MEGHALAYA	
	MIZO	MIZORAM	
	MP	MADHYA PRADESH	
		MRTHWD	MARATHWADA
		NAGA	NAGALAND
N COTL AP		NORTH COASTAL ANDHRA PRADESH	
NIK		NORTH INTERIOR KARNATAKA	
ORS		ORISSA	
PJB		PUNJAB	
RAJ		RAJASTHAN	
RYLSM		RAYALASEEMA	
SAU & KUTCH		SAURASHTRA & KUTCH	
SHWB		SUB-HIMALAYAN WEST BENGAL	
SIK		SOUTH INTERIOR KARNATAKA	
SKM		SIKKIM	

	TLNGN	TELANGANA
	TN	TAMIL NADU
	TRP	TRIPURA
	UP	UTTAR PRADESH
	UTRKND	UTTARAKHAND
	VID	VIDHARBHA
	SHWB	SUB HIMALAYAN WEST BENGAL
	GWB	GANGETIC WEST BENGAL
	ARSEA	ARABIAN SEA
	ILS	ISLANDS
MISCELLANEOUS	ASSW	IN ASSOCIATION WITH
	ASSTD	ASSOCIATED
	LLC	LOW LEVEL CIRCULATION
	EMBDD	EMBEDDED
	N/HOOD	NEIGHBOURHOOD
	EXT	EXTREME