

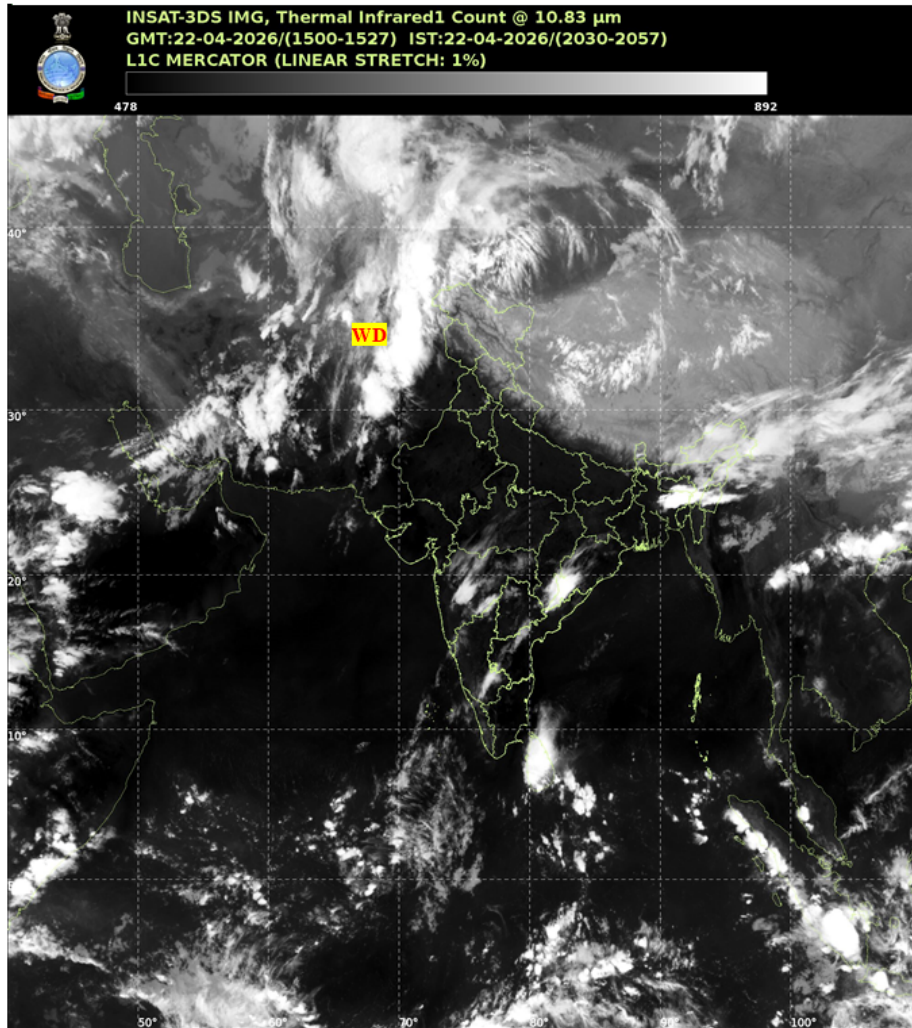


भारत मौसम विज्ञान विभाग  
पृथ्वी विज्ञान मंत्रालय  
India Meteorological Department  
Ministry of Earth Sciences



**SATELLITE BULLETIN BASED ON SATELLITE IMAGERIES AND PRODUCTS**

Date: 2026-04-22 Time: 15:00:00 UTC



TCIN50 DEMS 221500

SATELLITE BULLETIN BASED ON INSAT-3DS PIC OF 221500 UTC (.)

REGION COVERED BETWEEN LAT 50.0°N TO 35.0°S AND LONG 40.0°E TO 125.0°E (.)

**SALIENT FEATURES:**

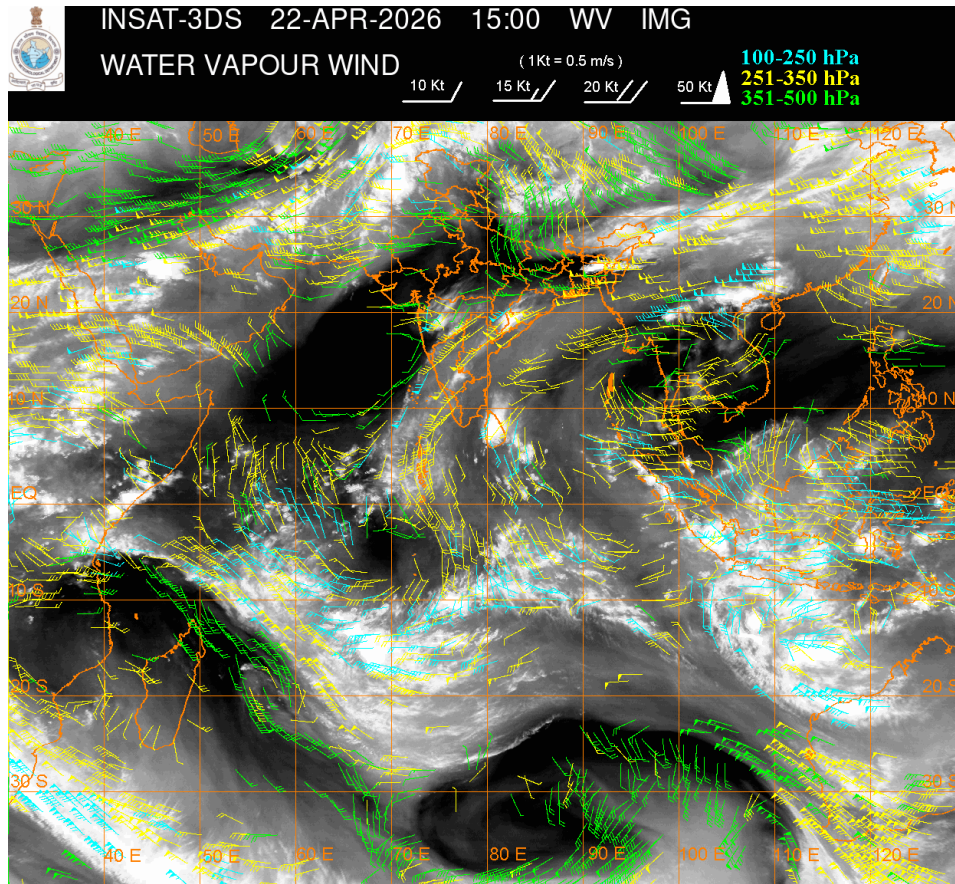
**WESTERN DISTURBANCE (WD):-**

SCT TO BKN MULTILAYERED CLOUDS OVER PERSIAN GULF IRAN AFGAN PAK AND N/HOOD IN ASSW WD OVER THE AREA (.)

**CONVECTIVE / THUNDERSTORM ACTIVITY:-**

MODERATE TO INTENSE CONVECTIVE / THUNDERSTORM ACTIVITY OVER MAHA SIK S CHTGH S

**ORS N COTL AP ARUPR ASSAM MEGHA NAGA MANI (MINIMUM CTT MINUS 40-70 DEGREE CELSIUS) (.)**



**CLOUD DESCRIPTION WITHIN INDIA:**

**NORTH:**

SCT LOW/MED CLOUDS WITH EMBDD ISOL WK TO MOD CONVTN OVER LADAKH (.) SCT LOW/MED CLOUDS OVER J&K HP UTRKND W HARY PJB (.)

**EAST:**

SCT LOW/MED CLOUDS WITH EMBDD MOD TO INT CONVTN OVER ARUPR ASSAM NAGA MANI MIZO S CHTGH S ORS AND ISOL WK TO MOD CONVTN OVER SKM SHWB N ORS (.) ISOL TO SCT LOW/MED CLOUDS OVER N CHTGH GWB REST NE STATES (.)

**WEST:**

SCT LOW/MED CLOUDS WITH EMBDD MOD TO INT CONVTN OVER MAHA AND WK TO MOD CONVTN OVER S MP (.) ISOL TO SCT LOW/MED CLOUDS OVER RAJ GUJ N MP (.)

**SOUTH:**

SCT LOW/MED CLOUDS WITH EMBDD MOD TO INT CONVTN OVER N COTL AP SIK (.) SCT LOW/MED CLOUDS WITH EMBDD ISOL WK TO MOD CONVTN OVER NIK RYLSM TLNGN LKSDP ILS NICOBAR ILS AREA (.) SCT LOW/MED CLOUDS OVER KER TN S COTL AP (.)

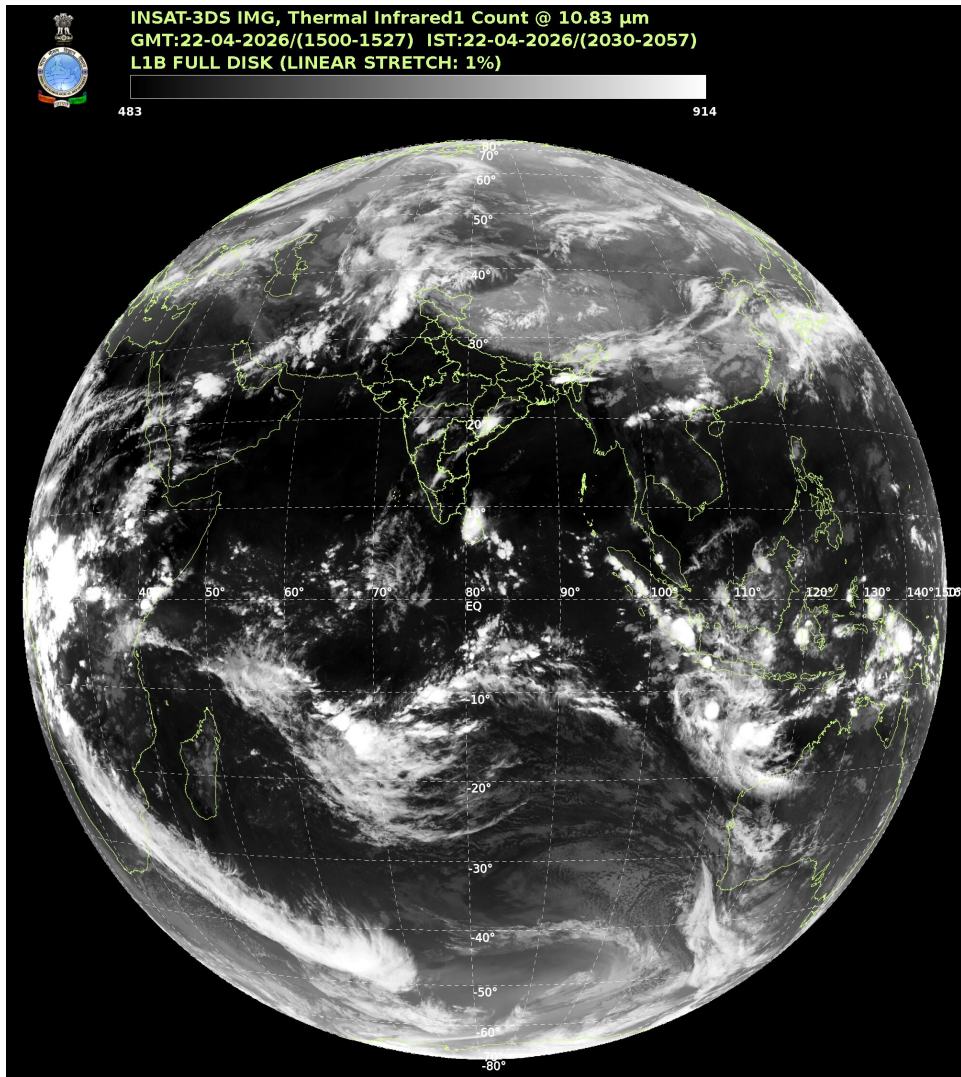
**ARABIAN SEA:**

SCT LOW/MED CLOUDS WITH EMBDD ISOL MOD TO INT CONVTN OVER EC & SOUTH ARSEA (.) SCT LOW/MED CLOUDS WITH EMBDD ISOL WK TO MOD CONVTN OVER NORTH ARSEA LKSDP ILS AREA MALDIVES AND COMORIN AREA (.)

**BAY OF BENGAL & ANDAMAN SEA:**

SCT LOW/MED CLOUDS WITH EMBDD ISOL MOD TO INT CONVTN OVER SW BAY AND SOUTH ANDAMAN SEA (.)

**CLOUD DESCRIPTION OUTSIDE INDIA:**



**SCT LOW/MED CLOUDS WITH EMBDD MOD TO INT CONVTN OVER PALK STR GULF OF MANNAR S SRILANKA MALDIVES AREA PAK BHUTAN TIBET CHINA YELLOW SEA ADJ EAST CHINA SEA NORTH MYANMAR GULF OF THAILAND SUMATRA STR OF MALACCA MALAYSIA BORNEO SOUTH CHINA SEA JAVA ILS & SEA CELEBES ILS & SEA SOUTH PHILIPPINES MADAGASCAR MOZAMBIQUE CHANNEL AND OVER INDIAN OCEAN BET LAT 5.0N TO 30.0S LONG 40.0E TO 100.0E (.)**

**T00 22/2110 HRS IST**

**NNNN**

**LEGEND**

REGION	
NORTH	J&K HP UTRKND PJB HARY DLH UP
EAST	BHR JHRKND CHTGH ORS WB SKM NORTH-EAST STATES
WEST	RAJ MP GUJ MAHA GOA
SOUTH	TLNGN AP KRNTK KER TN LKSDP ANDAMAN & NICOBAR ILS
CLOUD DISTRIBUTION	
ISOL	ISOLATED (LESS THAN 25%)

<b>SCT</b>	<b>SCATTERED (25 TO 50%)</b>
<b>BKN</b>	<b>BROKEN (51 TO 75%)</b>
<b>SLD</b>	<b>SOLID (GREATER THAN 75%)</b>
<b>CLOUDS TOP TEMPERATURE</b>	
<b>CTT</b>	<b>CLOUD TOP TEMPERATURE</b>
<b>CONVECTION</b>	
<b>WK CONVTN</b>	<b>WEAK CONVECTION (CTT GREATER THAN -25°C)</b>
<b>MOD CONVTN</b>	<b>MODERATE CONVECTION (CTT BETWEEN -25°C TO -40°C)</b>
<b>INT CONVTN</b>	<b>INTENSE CONVECTION (CTT BETWEEN -41°C TO -70°C)</b>
<b>V INT CONVTN</b>	<b>VERY INTENSE CONVECTION (CTT LESS THAN -70°C)</b>
<b>METEOROLOGICAL SUB-DIVISIONS, STATES &amp; UNION TERRITORIES</b>	
<b>J&amp;K</b>	<b>JAMMU AND KASHMIR</b>
<b>HP</b>	<b>HIMACHAL PRADESH</b>
<b>UTRKND</b>	<b>UTTARAKHAND</b>
<b>PJB</b>	<b>PUNJAB</b>
<b>HARY</b>	<b>HARYANA</b>
<b>DLH</b>	<b>DELHI</b>
<b>BHR</b>	<b>BIHAR</b>
<b>JHRKND</b>	<b>JHARKHAND</b>
<b>CHTGH</b>	<b>CHHATTISGARH</b>
<b>ORS</b>	<b>ORISSA</b>
<b>GWB</b>	<b>GANGETIC WEST BENGAL</b>
<b>SHWB</b>	<b>SUB-HIMALAYAN WEST BENGAL</b>
<b>SKM</b>	<b>SIKKIM</b>
<b>ARUPR</b>	<b>ARUNACHAL PRADESH</b>
<b>ASSAM</b>	<b>ASSAM</b>
<b>MEGHA</b>	<b>MEGHALAYA</b>
<b>MANI</b>	<b>MANIPUR</b>
<b>MIZO</b>	<b>MIZORAM</b>
<b>TRP</b>	<b>TRIPURA</b>
<b>RAJ</b>	<b>RAJASTHAN</b>
<b>MP</b>	<b>MADHYA PRADESH</b>
<b>GUJ</b>	<b>GUJARAT</b>
<b>SAU &amp; KUTCH</b>	<b>SAURASHTRA &amp; KUTCH</b>

<b>MAHA</b>	<b>MAHARASHTRA</b>
<b>M MAHA</b>	<b>MADHYA MAHARASHTRA</b>
<b>MRTHWD</b>	<b>MARATHWADA</b>
<b>VID</b>	<b>VIDARBHA</b>
<b>KKN</b>	<b>KONKAN</b>
<b>TLNGN</b>	<b>TELANGANA</b>
<b>RYLSM</b>	<b>RAYALSEEMA</b>
<b>COTL AP</b>	<b>COASTAL ANDHRA PRADESH</b>
<b>NIK</b>	<b>NORTH INTERIOR KARNATAKA</b>
<b>SIK</b>	<b>SOUTH INTERIOR KARNATAKA</b>
<b>COTL KRNTK</b>	<b>COASTAL KARNATAKA</b>
<b>KER</b>	<b>KERALA</b>
<b>TN</b>	<b>TAMILNADU</b>
<b>LKSDP</b>	<b>LAKSHADWEEP</b>
<b>ILS</b>	<b>ISLANDS</b>
<b>ARSEA</b>	<b>ARABIAN SEA</b>
<b>MISCELLANEOUS</b>	
<b>ASSW</b>	<b>IN ASSOCIATION WITH</b>
<b>ASSTD</b>	<b>ASSOCIATED</b>
<b>LLC</b>	<b>LOW LEVEL CIRCULATION</b>
<b>EMBDD</b>	<b>EMBEDDED</b>
<b>N/HOOD</b>	<b>NEIGHBOURHOOD</b>
<b>EXT</b>	<b>EXTREME</b>