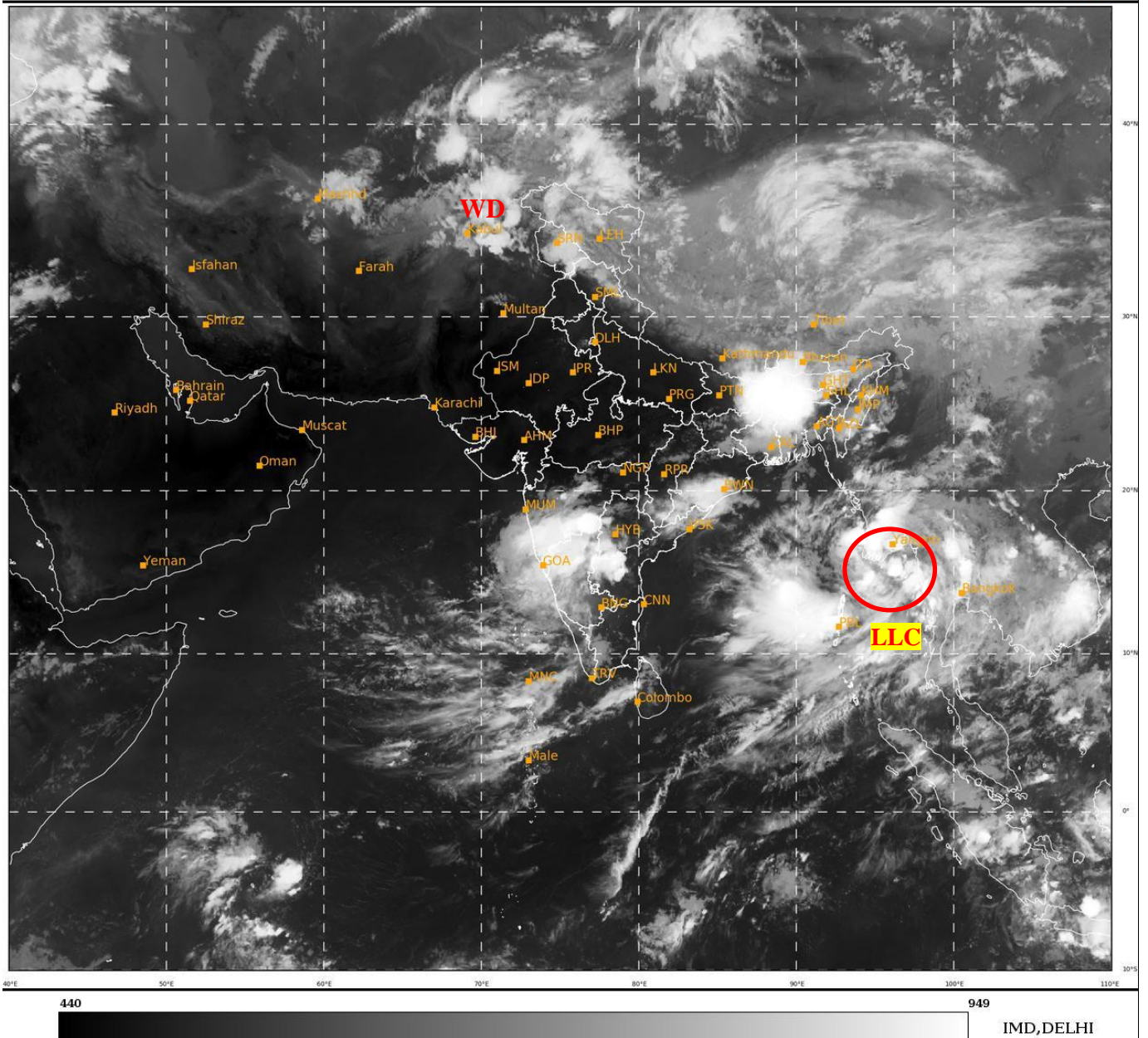




**SATELLITE BULLETIN BASED ON SATELLITE  
IMAGERIES AND PRODUCTS  
19.05.2022 TIME 1500 UTC**

SAT : INSAT-3D IMG  
IMG\_TIR1 10.8 um  
LIC Mercator

19-05-2022/(1500 to 1526) GMT  
19-05-2022/(2030 to 2056) IST



TCIN50 DEMS 191500

SATELLITE BULLETIN BASED ON INSAT-3D PIC OF 191500 UTC (.)

REGION COVERED BETWEEN LAT 50.0°N TO 30.0°S AND LONG 40.0°E TO 125.0°E (.)

**SALIENT FEATURES:-**

**LOW LEVEL CIRCULATION (LLC) OVER GULF OF MARTABAN AND N/HOOD:-**

LOW LEVEL CIRCULATION (LLC) OVER GULF OF MARTABAN AND N/HOOD (.) ASSTD SCT TO BKN LOW MED CLOUDS WITH EMBDD INT TO V INT CONVTN OVER S MYANMAR NORTH ANDAMAN SEA EC BAY (MINIMUM CTT **-93** DEG CEL) (.)

**WESTERN DISTURBANCE (WD):-**

SCT MULTILAYERED CLOUDS OVER N AFGAN N PAK LADAKH J&K HP TIBET ADJ CHINA IN ASSW **WD** OVER THE AREA (.)

**THUNDERSTORM / CONVECTIVE ACTIVITY:-**

THUNDERSTORM / CONVECTIVE ACTIVITIES OBSERVED OVER E BHR NE JHRKND N GWB SHWB SKM W ASSAM MEGHA MANI MIZO S CHTGH S ORS N COTL AP RYLSM TLNGN MAHA NIK & ANDAMAN ILS (.)



**CONVECTION OVER LAKSHADWEEP ILS AREA ADJ SE ARSEA:-**

SCT MODERATE TO INTENSE CONVECTION OVER LKSDP ILS AREA ADJ SE ARSEA DISORGANISED DURING LAST 06 HOURS (.) MINIMUM CTT MINUS 56 DEG C (.)

**DUST:-**

METEOSAT-8 RGB DUST PRODUCT AT 1415 UTC INDICATES DUST OVER S PJB ADJ NW HARY (.)

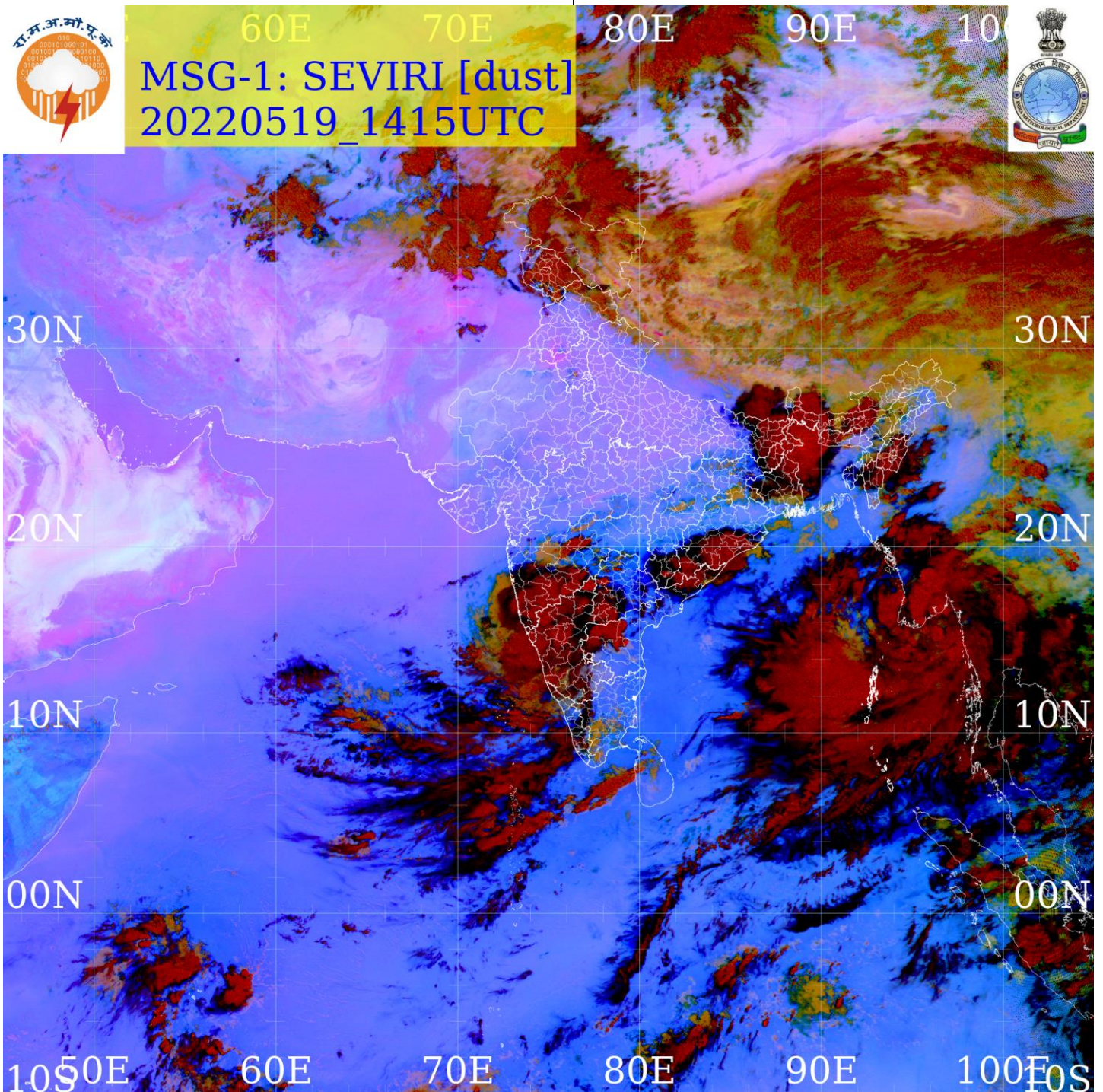
**PRECIPITATION NOWCASTING:-**

**(BASED ON SCOPE NOWCASTING TOOL AT 1400 UTC AT A LEAD TIME OF 03 HRS (MM/HR):-**

RAINFALL UPTO 10-20 MM LIKELY OVER S CHTGH S ORS SHWB SOUTH M MAHA S KKN NIK N RYLSM (.)

RAINFALL UPTO 5-10 MM LIKELY OVER E BHR W ASSAM MEGHA MANI MIZO N COTL AP MRTHWD GOA REST KRNTK ANDAMAN ILS (.)

RAINFALL UPTO 0.5-5 MM LIKELY OVER NW LADAKH J&K N HP NE JHRKND N GWB SW TLNGN KER NW TN LKSDP ILS (.)







INSAT-3D 19-MAY-2022 15:00 WV IMG

WATER VAPOUR WIND

(1Kt = 0.5 m/s)

10 Kt

15 Kt

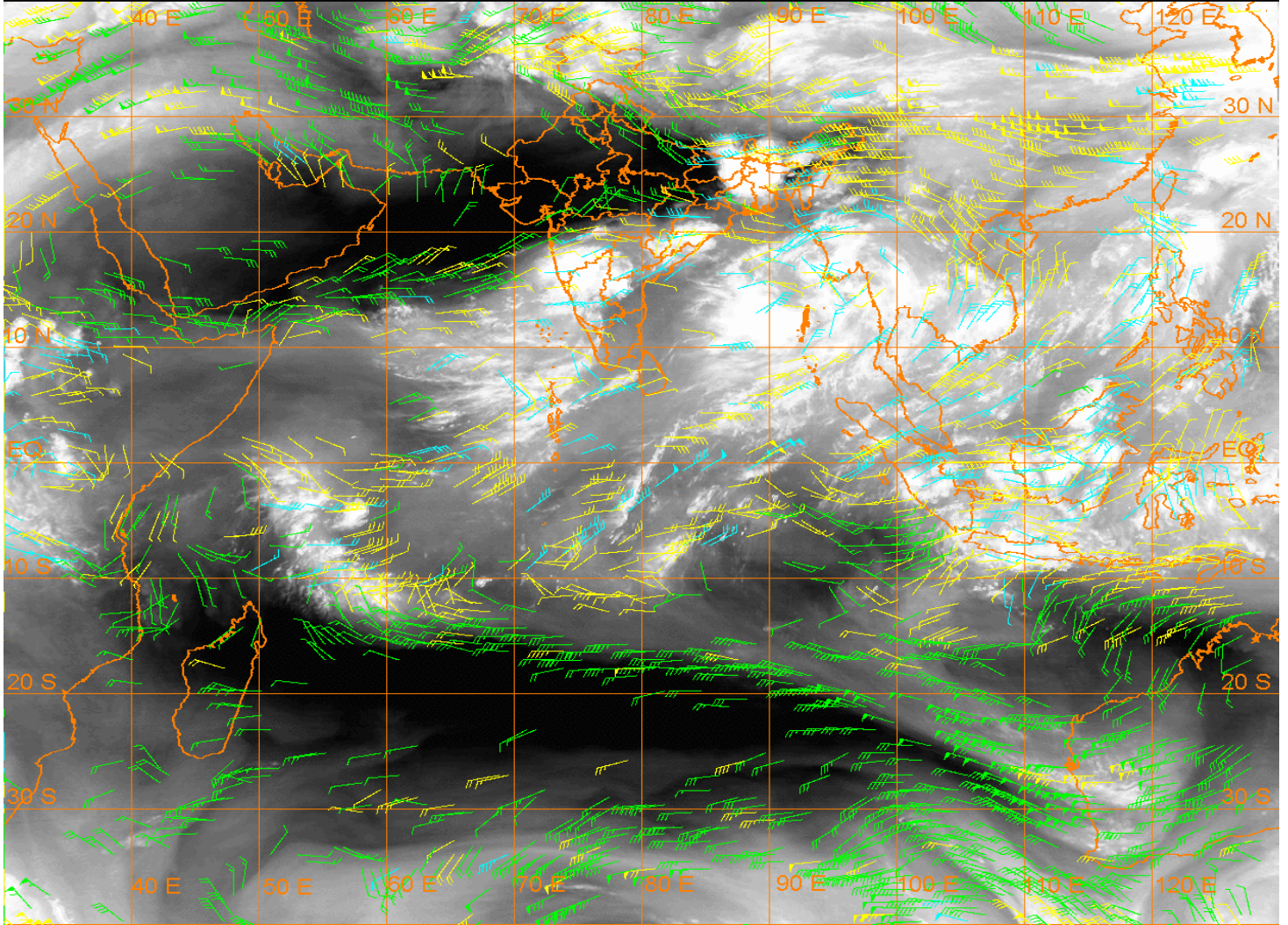
20 Kt

50 Kt

100-250 hPa

251-350 hPa

351-500 hPa



**CLOUDS DESCRIPTION WITHIN INDIA:-**

**NORTH:-**

SCT LOW/MED CLOUDS WITH EMBDD MOD TO INT CONVTN OVER LADAKH J&K N HP AND ISOL WK TO MOD CONVTN OVER N UTRKND (.) ISOL TO SCT LOW/MED CLOUDS OVER S HP S UTRKND N PJB S HARY DLH (.)

**EAST:-**

BKN LOW/MED CLOUDS WITH EMBDD INT TO V INT CONVTN OVER E BHR NE JHRKND SHWB N GWB W MEGHA NW BD (MINIMUM CTT MINUS 93 DEG CEL) (.) SCT LOW/MED CLOUDS WITH EMBDD MOD TO INT CONVTN OVER S ORS S CHTGH SKM N ASSAM E MEGHA MANI MIZO AND ISOL WK TO MOD CONVTN OVER N CHTGH N ORS REST JHRKND S GWB NE STATES (.) SCT LOW/MED CLOUDS OVER W BHR (.)

**WEST:-**

BKN LOW/MED CLOUDS WITH EMBDD INT TO V INT CONVTN OVER MRTHWD SOUTH MADHYA MAHA S KKN GOA (MINIMUM CTT MINUS 93 DEG C) (.) SCT LOW/MED CLOUDS WITH EMBDD MOD TO INT CONVTN OVER W VID NORTH M MAHA (.) SCT LOW/MED CLOUDS OVER NW RAJ S MP (.)

**SOUTH:-**

SCT TO BKN LOW/MED CLOUDS WITH EMBDD INT TO V INT CONVTN OVER NIK RYLSM ANDAMAN ILS (MINIMUM CTT MINUS 93 DEG C) (.) SCT LOW/MED CLOUDS WITH EMBDD MOD TO INT CONVTN OVER SW TLNGN N COTL AP REST KRNTK LKSDP & NICOBAR ILS AND WK TO MOD CONVTN OVER REST TLNGN KER W TN (.) SCT LOW/MED CLOUDS OVER S COTL AP S RYLSM REST TN (.)

**ARABIAN SEA:-**

SCT LOW/MED CLOUDS WITH EMBDD MOD TO INT CONVTN OVER SE ARSEA ADJ EC ARSEA LKSDP ILS COMORIN AREA (.)

**BAY OF BENGAL & ANDAMAN SEA:-**

SCT TO BKN LOW/MED CLOUDS WITH EMBDD INT TO V INT CONVTN OVER EC ADJ SE BAY ARAKAN COAST N ANDAMAN SEA GULF OF MARTABAN (MINIMUM CTT MINUS 93 DEG C) (.) SCT LOW/MED CLOUDS WITH EMBDD MOD TO INT CONVTN OVER REST SE BAY S ANDAMAN SEA AND WK TO MOD CONVTN OVER N BAY (.)

**CLOUDS DESCRIPTION OUTSIDE INDIA:-**

SCT LOW/MED CLOUDS WITH EMBDD MOD TO INT CONVTN OVER MALDIVES N PAK E NEPAL BHUTAN TIBET CHINA MYANMAR THAILAND GULF OF THAILAND CAMBODIA LAOS VIETNAM SUMATRA STR OF MALACCA MALAYSIA BORNEO SOUTH CHINA SEA JAVA ILS & SEA CELEBES ILS PHILIPPINES YELLOW SEA E CHINA SEA AND OVER INDIAN OCEAN BET LAT 5.0N TO 10.0S LONG 50.0E TO 90.0E (.)

TOO 19/2130 HRS IST=

NNNN

**LEGEND:-**

REGION	NORTH	J&K HP PJB HARY DLH UP UTRKND
	EAST	BHR JHRKND CHTGH OR WB SKM NORTH- EAST STATES
	WEST	RAJ MP GUJ MAHA GOA
	SOUTH	TLNGN AP KRNTK KER TN LKSDP ANDAMAN & NICOBAR ILS

CLOUD DISTRIBUTION	ISOL	ISOLATED (LESS THAN 25%)
	SCT	SCATTERED (25 TO 50%)
	BKN	BROKEN (51 TO 75%)
	SLD	SOLID (GREATER THAN 75%)
CLOUDS TOP TEMPERATURE	CTT	CLOUD TOP TEMPERATURE
CONVECTION	WK CONVTN	WEAK CONVECTION (CTT GREATER THAN -25°C)
	MOD CONVTN	MODERATE CONVECTION (CTT BETWEEN -25°C TO -40°C)
	INT CONVTN	INTENSE CONVECTION (CTT BETWEEN -41°C TO -70°C)
	V INT CONVTN	VERY INTENSE CONVECTION (CTT LESS THAN -70°C)
METEOROLOGICAL SUB-DIVISIONS, STATES & UNION TERRITORIES	ARUPR	ARUNACHAL PRADESH
	BHR	BIHAR
	CHTGH	CHHATTISGARH
	COTL AP	COASTAL ANDHRA PRADESH
	COTL KRNTK	COASTAL KARNATAKA
	COTL ORS	COASTAL ORISSA
	GUJ	GUJARAT
	GWB	GANGETIC WEST BENGAL
HARY	HARYANA	

	<b>DLH</b>	<b>DELHI</b>
	<b>HP</b>	<b>HIMACHAL PRADESH</b>
	<b>J&amp;K</b>	<b>JAMMU AND KASHMIR</b>
	<b>JHRKND</b>	<b>JHARKHAND</b>
	<b>KER</b>	<b>KERALA</b>
	<b>KKN</b>	<b>KONKAN</b>
	<b>LKSDP</b>	<b>LAKSHADWEEP</b>
	<b>M MAHA</b>	<b>MADHYA MAHARASHTRA</b>
	<b>MAHA</b>	<b>MAHARASHTRA</b>
	<b>MANI</b>	<b>MANIPUR</b>
	<b>MEGHA</b>	<b>MEGHALAYA</b>
	<b>MIZO</b>	<b>MIZORAM</b>
	<b>MP</b>	<b>MADHYA PRADESH</b>
	<b>MRTHWD</b>	<b>MARATHWADA</b>
	<b>NAGA</b>	<b>NAGALAND</b>
	<b>N COTL AP</b>	<b>NORTH COASTAL ANDHRA PRADESH</b>
	<b>NIK</b>	<b>NORTH INTERIOR KARNATAKA</b>
	<b>ORS</b>	<b>ORISSA</b>
	<b>PJB</b>	<b>PUNJAB</b>
	<b>RAJ</b>	<b>RAJASTHAN</b>
	<b>RYLSM</b>	<b>RAYALASEEMA</b>
	<b>SAU &amp; KUTCH</b>	<b>SAURASHTRA &amp; KUTCH</b>
	<b>SHWB</b>	<b>SUB-HIMALAYAN WEST BENGAL</b>
	<b>SIK</b>	<b>SOUTH INTERIOR KARNATAKA</b>
	<b>SKM</b>	<b>SIKKIM</b>
	<b>TLNGN</b>	<b>TELANGANA</b>
	<b>TN</b>	<b>TAMIL NADU</b>
	<b>TRP</b>	<b>TRIPURA</b>
	<b>UP</b>	<b>UTTAR PRADESH</b>
	<b>UTRKN</b>	<b>UTTARAKHAND</b>
	<b>VID</b>	<b>VIDHARBHA</b>
	<b>SHWB</b>	<b>SUB HIMALAYAN WEST BENGAL</b>
	<b>GWB</b>	<b>GANGETIC WEST BENGAL</b>
	<b>ARSEA</b>	<b>ARABIAN SEA</b>
	<b>ILS</b>	<b>ISLANDS</b>
<b>MISCELLANEOUS</b>	<b>ASSW</b>	<b>IN ASSOCIATION WITH</b>
	<b>ASSTD</b>	<b>ASSOCIATED</b>
	<b>LLC</b>	<b>LOW LEVEL CIRCULATION</b>
	<b>EMBDD</b>	<b>EMBEDDED</b>
	<b>N/HOOD</b>	<b>NEIGHBOURHOOD</b>
	<b>EXT</b>	<b>EXTREME</b>