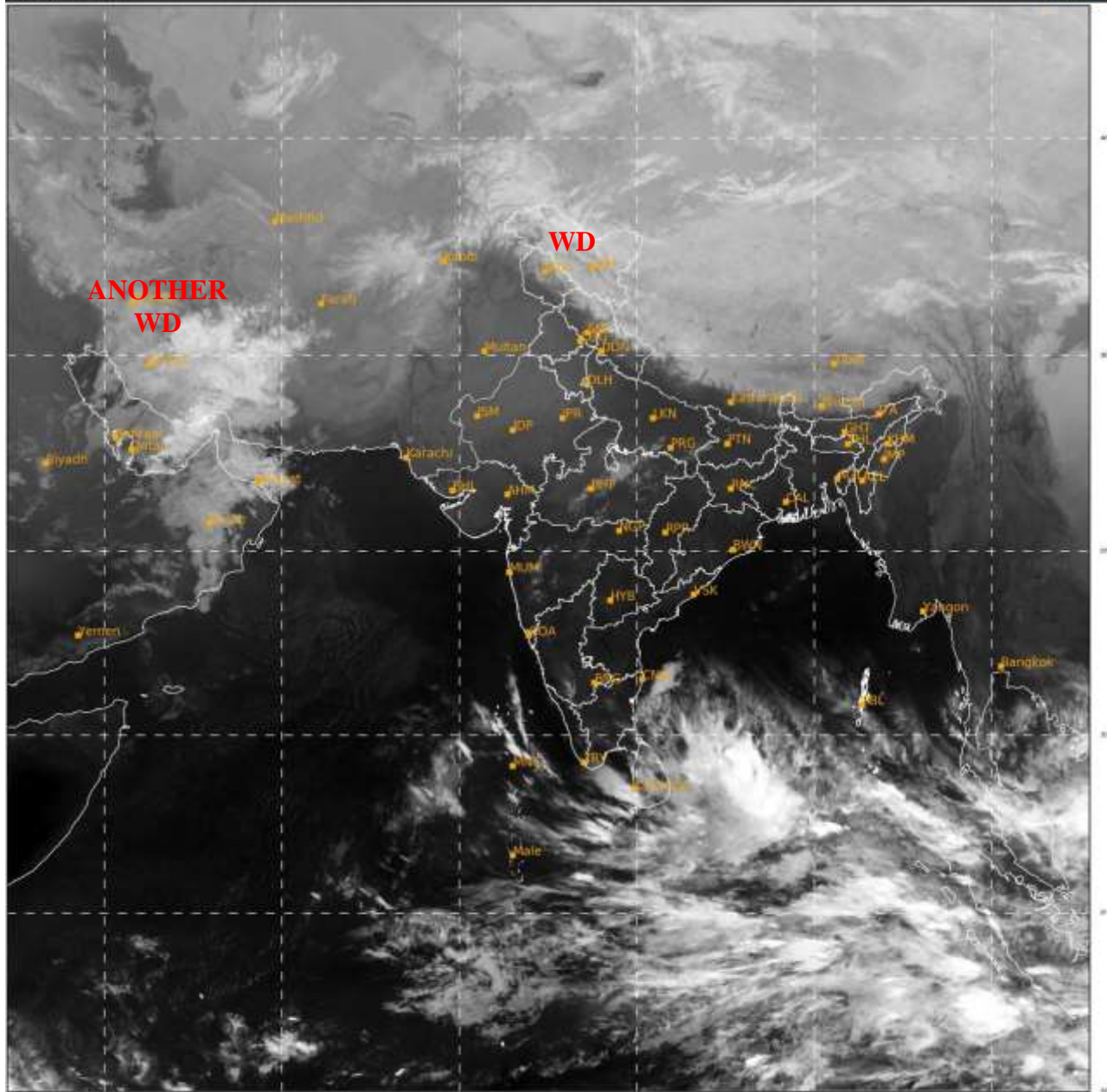




**SATELLITE BULLETIN BASED ON SATELLITE
IMAGERIES AND PRODUCTS**
26.01.2023 TIME 1500 UTC

SAT : INSAT-3D IMG
IMG_TIR1 10.8 um
LIC Mercator

26-01-2023/(1500 to 1526) GMT
26-01-2023/(2030 to 2056) IST



511

834

IMD, DELHI

TCIN50 DEMS 261500

SATELLITE BULLETIN BASED ON INSAT-3D PIC OF 261500 UTC (.)

REGION COVERED BETWEEN LAT 50.0°N TO 35.0°S AND LONG 40.0°E TO 125.0°E (.)

SALIENT FEATURES:-

CONVECTION OVER SE BAY ADJ EQUATORIAL INDIAN OCEAN:-

INTENSE TO VERY INTENSE CONVECTION OVER SOUTH-EAST BAY SOUTH OF LAT 10.0N INDIAN OCEAN PERSISTS (.) MINIMUM CTT **MINUS 91** DEGREE CEL (.)

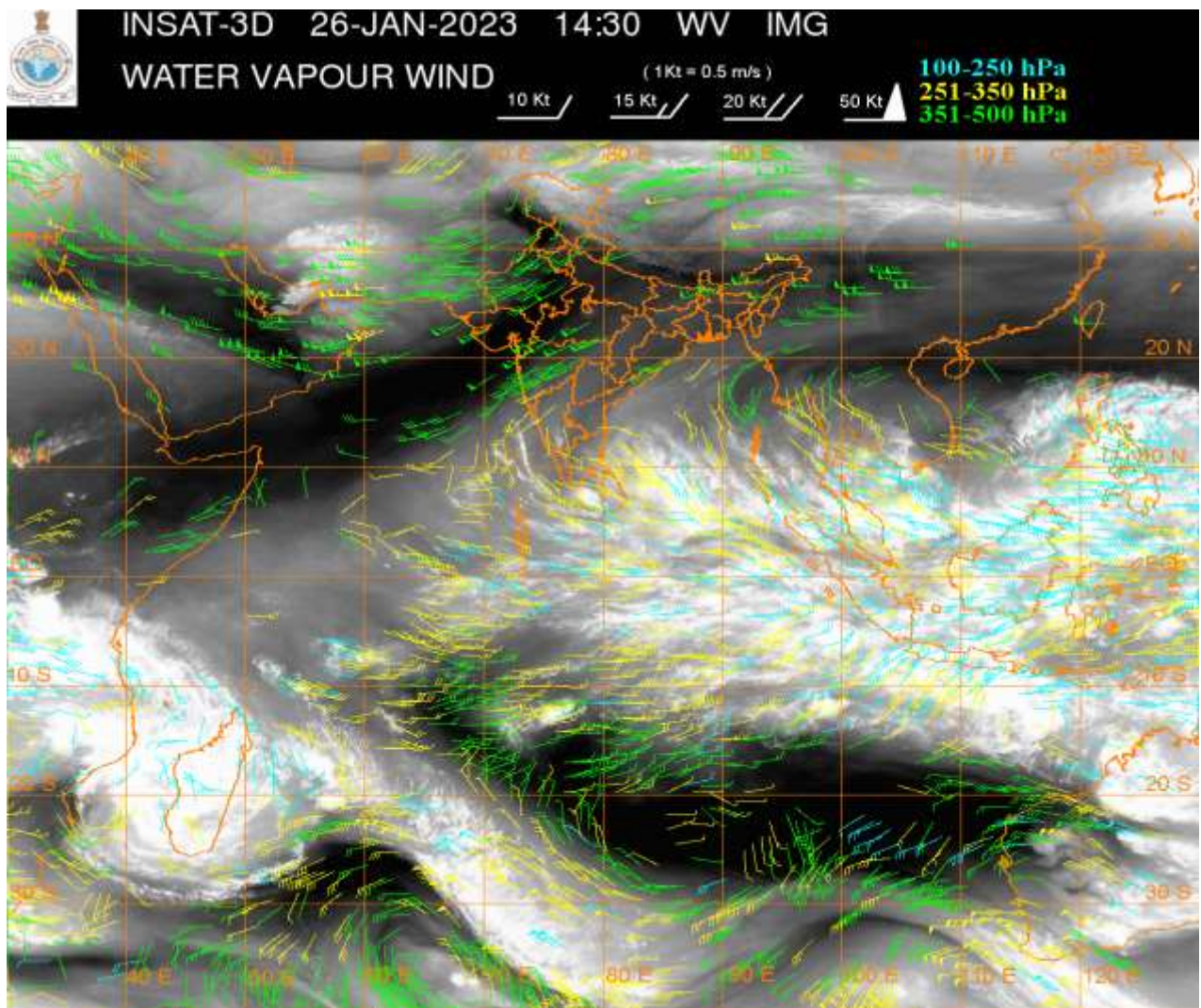
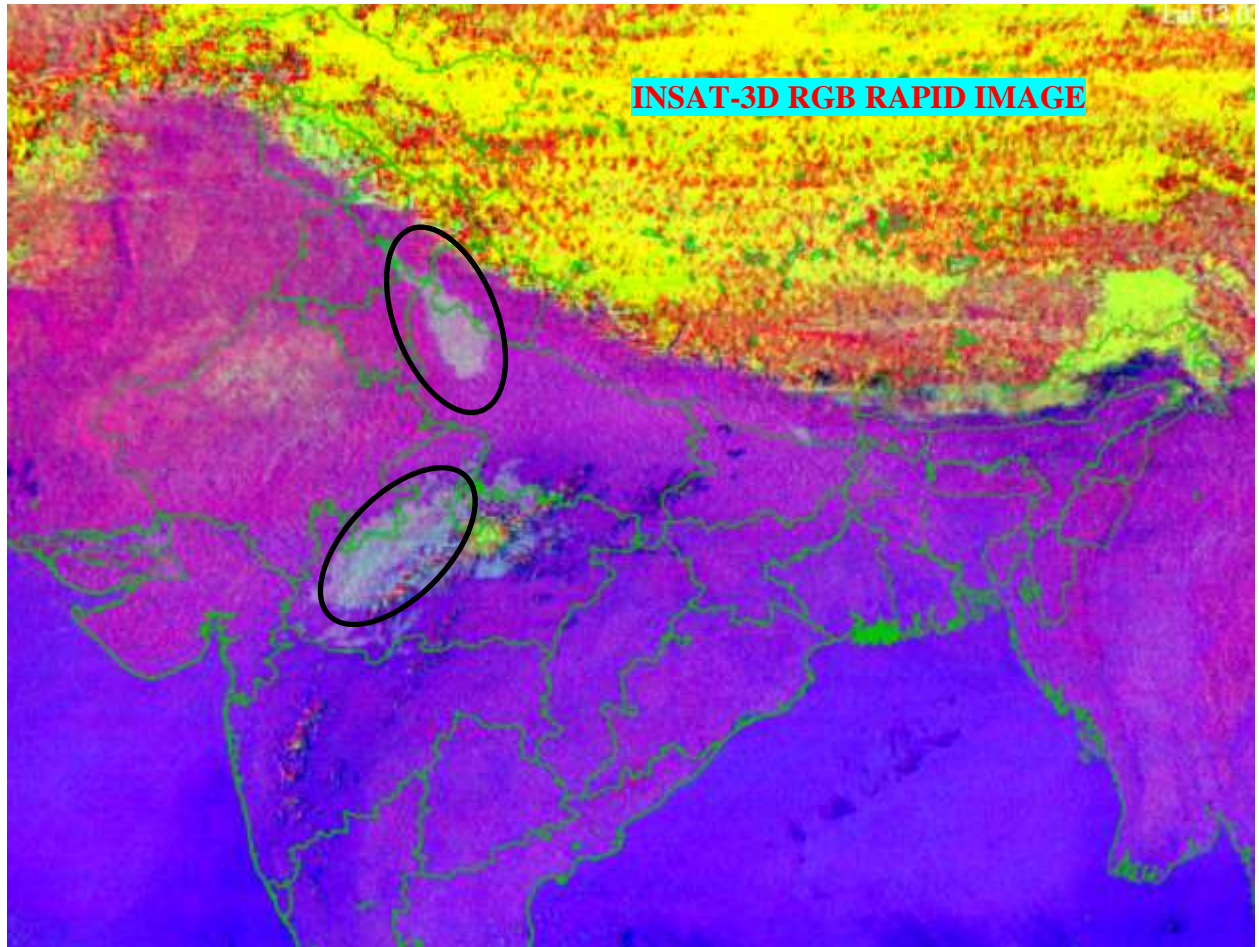
WESTERN DISTURBANCE (WD):-

SCT MULTILAYERED CLOUDS OVER EXTREME N PAK LADAKH J&K TIBET ADJ CHINA IN ASSW **WD** OVER THE AREA (.)

SCT MULTILAYERED CLOUDS OVER IRAN & N/HOOD IN ASSW **ANOTHER WD** OVER THE AREA (.)

FOG / LOW CLOUDS:-

NIGHT MICROPHYSICS PRODUCT OF INSAT-3D (RAPID) AT 1500 UTC INDICATES SCT TO BKN FOG / LOW CLOUDS OVER EXT NE HARY NW UP NW MP (.)



CLOUDS DESCRIPTION WITHIN INDIA:-

NORTH:-

SCT LOW/MED CLOUDS WITH EMBDD MOD TO INT CONVTN OVER N LADAKH AND WK TO MOD CONVTN OVER REST LADAKH J&K N HP N UTRKND SE UP (.) SCT LOW/MED CLOUDS OVER S HP S UTRKND (.)

EAST:-

SCT LOW/MED CLOUDS WITH EMBDD WK TO MOD CONVTN OVER SKM ARUPR (.) ISOL TO SCT LOW/MED CLOUDS OVER N CHTGH ASSAM MEGHA (.)

WEST:-

SCT LOW/MED CLOUDS WITH EMBDD ISOL WK TO MOD CONVTN OVER NE MP SOUTH M MAHA (.) SCT LOW/MED CLOUDS OVER REST MP REST MAHA (.)

SOUTH:-

SCT TO BKN LOW/MED CLOUDS WITH EMBDD MOD TO INT CONVTN OVER NICOBAR ILS (.) SCT LOW/MED CLOUDS WITH EMBDD ISOL WK TO MOD CONVTN OVER SW SIK LKSDP ILS (.) ISOL TO SCT LOW/MED CLOUDS OVER S RYLSM REST KRNTK KER TN & ANDAMAN ILS (.)

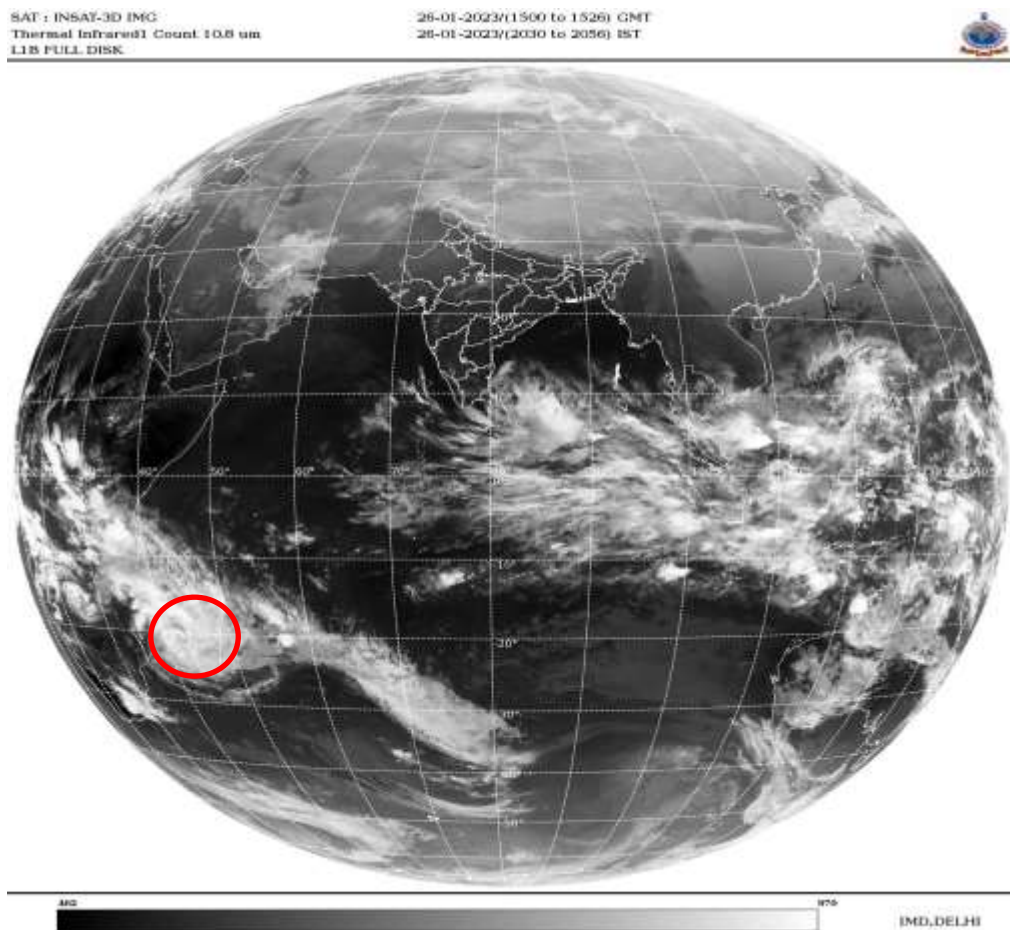
ARABIAN SEA:-

SCT LOW/MED CLOUDS WITH EMBDD ISOL MOD TO INT CONVTN OVER SE ARSEA LKSDP ILS AREA & COMORIN AREA (.)

BAY OF BENGAL & ANDAMAN SEA:-

SCT TO BKN LOW/MED CLOUDS WITH EMBDD INT TO V INT CONVTN OVER SOUTH BAY SOUTH OF LAT 10.0N INDIAN OCEAN AND MOD TO INT CONVTN OVER S ANDAMAN SEA (.)

CLOUDS DESCRIPTION OUTSIDE INDIA:-



VORTEX (CHENESO) OVER MOZAMBIQUE CHANNEL:-

VORTEX (**CHENESO**) OVER MOZAMBIQUE CHANNEL (**AREA-D75**) CENTERED NEAR **20.2S / 42.5E** (.) INTENSITY **T3.5/4.5** (.) CORRESPONDING MAXIMUM SUSTAINED WINDS OF **48-63 KTS** (.) ASSTD BKN LOW/MED CLOUDS WITH EMBDD INT TO V INT CONVTN OVER MOZAMBIQUE CHANNEL & MADAGASCAR (.)

SCT LOW/MED CLOUDS WITH EMBDD MOD TO INT CONVTN OVER SRI LANKA MALDIVES CHINA THAILAND GULF OF THAILAND CAMBODIA SUMATRA STR OF MALACCA MALAYSIA BORNEO SOUTH CHINA SEA JAVA ILS & SEA CELEBES ILS & SEA PHILIPPINES SULU SEA MADAGASCAR MOZAMBIQUE CHANNEL AND OVER INDIAN OCEAN BET LAT 5.0N TO 13.0S LONG 60.0E TO 120.0E AND BET LAT 10.0S TO 30.0S LONG 40.0E TO 80.0E (.)

TOO 26/2130 HRS IST=

NNNN

LEGEND:-

REGION	NORTH	J&K HP PJB HARY DLH UP UTRKND
	EAST	BHR JHRKND CHTGH OR WB SKM NORTH- EAST STATES
	WEST	RAJ MP GUJ MAHA GOA
	SOUTH	TLNGN AP KRNTK KER TN LKSDP ANDAMAN & NICOBAR ILS

CLOUD DISTRIBUTION	ISOL	ISOLATED (LESS THAN 25%)
	SCT	SCATTERED (25 TO 50%)
	BKN	BROKEN (51 TO 75%)
	SLD	SOLID (GREATER THAN 75%)
CLOUDS TOP TEMPERATURE	CTT	CLOUD TOP TEMPERATURE
CONVECTION	WK CONVTN	WEAK CONVECTION (CTT GREATER THAN -25°C)
	MOD CONVTN	MODERATE CONVECTION (CTT BETWEEN -25°C TO -40°C)
	INT CONVTN	INTENSE CONVECTION (CTT BETWEEN -41°C TO -70°C)
	V INT CONVTN	VERY INTENSE CONVECTION (CTT LESS THAN -70°C)
METEOROLOGICAL SUB-DIVISIONS, STATES & UNION TERRITORIES	ARUPR	ARUNACHAL PRADESH
	BHR	BIHAR
	CHTGH	CHHATTISGARH
	COTL AP	COASTAL ANDHRA PRADESH
	COTL KRNTK	COASTAL KARNATAKA
	COTL ORS	COASTAL ORISSA
	GUJ	GUJARAT
	GWB	GANGETIC WEST BENGAL
	HARY	HARYANA
	DLH	DELHI
	HP	HIMACHAL PRADESH
	J&K	JAMMU AND KASHMIR
	JHRKND	JHARKHAND
	KER	KERALA
	KKN	KONKAN
	LKSDP	LAKSHADWEEP
	M MAHA	MADHYA MAHARASHTRA
	MAHA	MAHARASHTRA
	MANI	MANIPUR
	MEGHA	MEGHALAYA
	MIZO	MIZORAM
MP	MADHYA PRADESH	
	MRTHWD	MARATHWADA

	NAGA	NAGALAND
	N COTL AP	NORTH COASTAL ANDHRA PRADESH
	NIK	NORTH INTERIOR KARNATAKA
	ORS	ORISSA
	PJB	PUNJAB
	RAJ	RAJASTHAN
	RYLSM	RAYALASEEMA
	SAU & KUTCH	SAURASHTRA & KUTCH
	SHWB	SUB-HIMALAYAN WEST BENGAL
	SIK	SOUTH INTERIOR KARNATAKA
	SKM	SIKKIM
	TLNGN	TELANGANA
	TN	TAMIL NADU
	TRP	TRIPURA
	UP	UTTAR PRADESH
	UTRKN D	UTTARAKHAND
	VID	VIDHARBHA
	SHWB	SUB HIMALAYAN WEST BENGAL
	GWB	GANGETIC WEST BENGAL
	ARSEA	ARABIAN SEA
	ILS	ISLANDS
MISCELLANEOUS	ASSW	IN ASSOCIATION WITH
	ASSTD	ASSOCIATED
	LLC	LOW LEVEL CIRCULATION
	EMBDD	EMBEDDED
	N/HOOD	NEIGHBOURHOOD
	EXT	EXTREME