



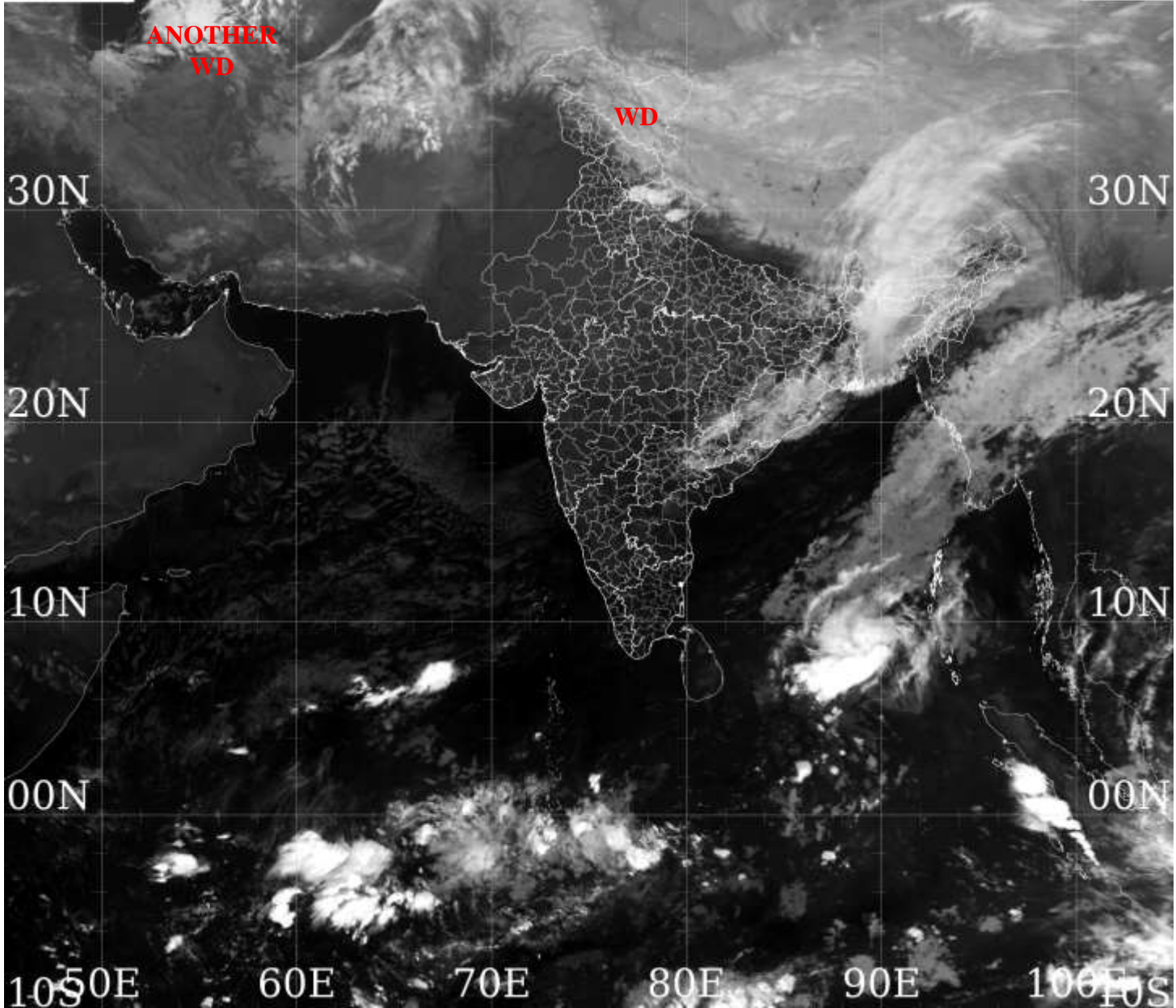
भारत मौसम विज्ञान विभाग  
पृथ्वी विज्ञान मंत्रालय  
India Meteorological Department  
Ministry of Earth Sciences



**SATELLITE BULLETIN BASED ON SATELLITE**  
**IMAGERIES AND PRODUCTS**  
**11.01.2022 TIME 2100 UTC**



60E 70E 80E 90E 100E  
MSG-1: SEVIRI [ir108\_inv]  
20220111\_2030UTC



TCIN50 DEMS 112100  
SATELLITE BULLETIN BASED ON INSAT-3D PIC OF 112100 UTC (.)  
REGION COVERED BETWEEN LAT 50.0°N TO 30.0°S AND LONG 40.0°E TO 125.0°E (.)

**SALIENT FEATURES:-**

**WESTERN DISTURBANCE (WD):-**

SCT MULTILAYERED CLOUDS OVER LADAKH HP UTRKND E NEPAL TIBET ADJ CHINA AND N/HOOD IN ASSW **WD** OVER THE AREA (.)

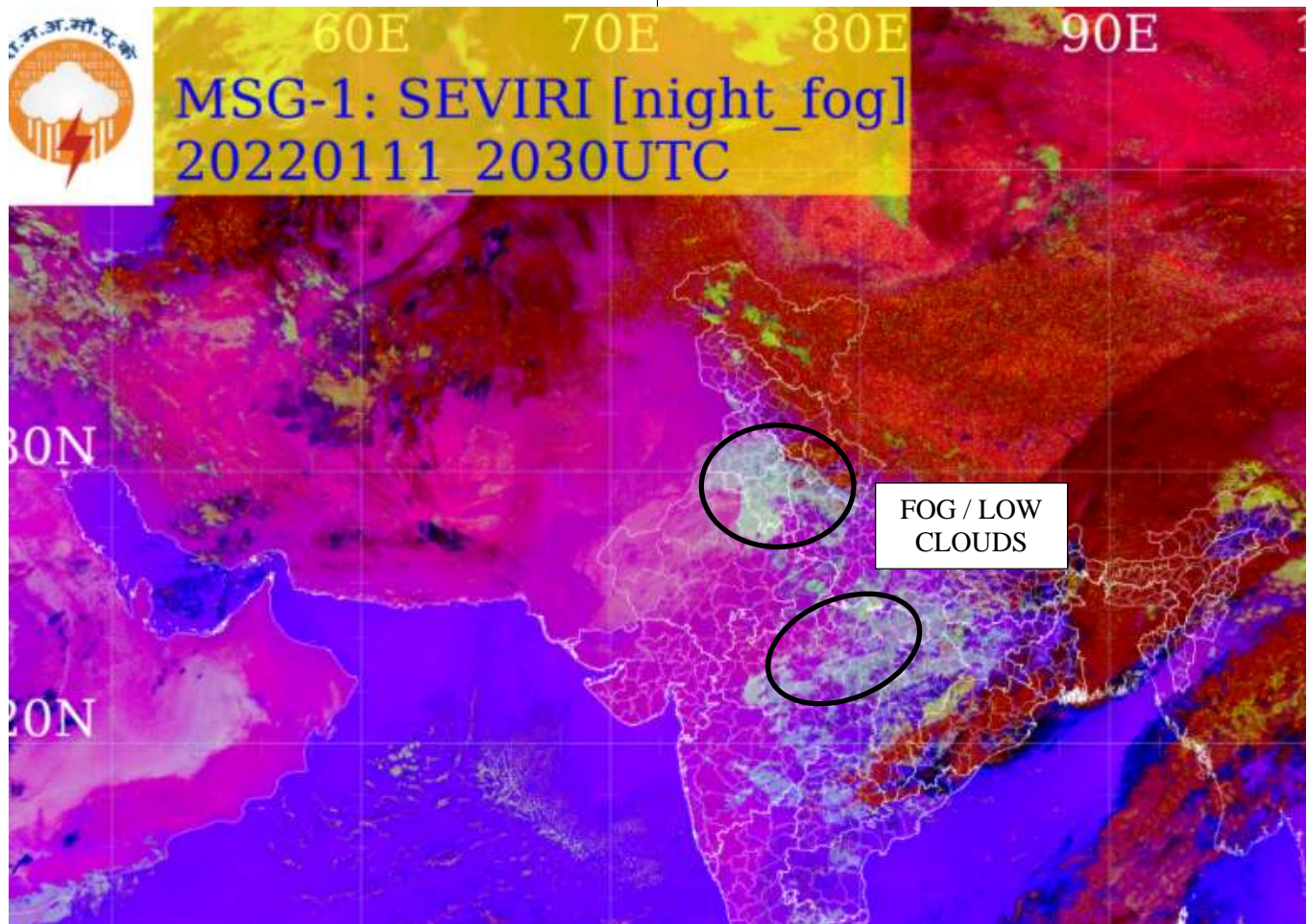
SCT MULTILAYERED CLOUDS OVER CASPIAN SEA TURKMENISTAN AND N/HOOD IN ASSW **ANOTHER WD** OVER THE AREA (.)

**CONVECTION OVER SOUTH BAY:-**

SCT TO BKN LOW/MED CLOUDS WITH EMBDD INT TO V INT CONVTN OVER CENTRAL PARTS OF SOUTH BAY PERSISTS (.) MINIMUM CTT MINUS **84** DEG C (.)

## FOG / LOW CLOUDS:-

METEOSAT-8 RGB NIGHT FOG PRODUCT AT 2030 UTC INDICATES SCT TO BKN FOG / LOW CLOUDS OVER S PJB HARY DLH NW UP E MP ADJ SE UP N CHTGH (.)



## CLOUDS DESCRIPTION WITHIN INDIA:-

### NORTH:-

SCT LOW/MED CLOUDS WITH EMBDD MOD TO INT CONVTN OVER EXT S HP ADJ W UTRKND (.) SCT LOW/MED CLOUDS WITH EMBDD WK TO MOD CONVTN OVER E J&K LADAKH REST HP REST UTRKND EXT NW UP (.) SCT LOW/MED CLOUDS OVER SE PJB REST UP (.)

### EAST:-

SCT TO BKN LOW/MED CLOUDS WITH EMBDD MOD TO INT CONVTN OVER E SHWB SKM MEGHA W ASSAM & NBD (.) SCT LOW/MED CLOUDS WITH EMBDD WK TO MOD CONVTN OVER S CHTGH ORS NE & S JHRKND E BHRGWB W SHWB SKM ARUPR E ASSAM NAGA N MANI TRP N MIZO & S BD (.) SCT LOW/MED CLOUDS OVER N CHTGH W JHRKND W BHR (.)

### WEST:-

SCT LOW/MED CLOUDS WITH EMBDD WK CONVTN OVER SE VID (.) SCT LOW/MED CLOUDS OVER E MP REST VID MRTHWD (.)

### SOUTH:-

SCT LOW/MED CLOUDS WITH EMBDD WK TO MOD CONVTN OVER EXT E TLNGN EXT N COTL AP S ANDAMAN ILS (.) SCT LOW/MED CLOUDS OVER E KRNTK REST TLNGN RYLSM REST N COTL AP TN N ANDAMAN & NICOBAR ILS (.)

### ARABIAN SEA:-

SCT LOW/MED CLOUDS WITH EMBDD ISOL MOD TO INT CONVTN OVER EXT S ARSEA (.) SCT LOW/MED CLOUDS OVER REST ARSEA (.)

### BAY OF BENGAL & ANDAMAN SEA:-

SCT TO BKN LOW/MED CLOUDS WITH EMBDD INT TO V INT CONVTN OVER CENTRAL PARTS OF SOUTH BAY (.) SCT LOW/MED CLOUDS WITH EMBDD WK TO MOD CONVTN OVER NE & EAST CENTRAL BAY AND REST SOUTH BAY ANDAMAN SEA (.)

**CLOUDS DESCRIPTION OUTSIDE INDIA:-**

SCT LOW/MED CLOUDS WITH EMBDD MOD TO INT CONVTN OVER S SRI LANKA NEPAL BHUTAN TIBET CHINA MYANMAR THAILAND GULF OF THAILAND SUMATRA STR OF MALACCA MALAYSIA BORNEO SOUTH CHINA SEA JAVA ILS & SEA CELEBES ILS & SEA S PHILIPPINES SULU SEA MADAGASCAR MOZAMBIQUE CHANNEL AND OVER INDIAN OCEAN BET LAT 5.0N TO 16.0S LONG 52.0E TO 114.5E AND BET LAT 13.0S TO 30.0S LONG 50.0E TO 90.0E (.)

TOO 12/0240 HRS IST=

NNNN

**LEGEND:-**

|        |       |  |
|--------|-------|--|
| REGION | NORTH | J&K HP PJB HARY DLH UP UTRKND                        |
|        | EAST  | BHR JHRKND CHTGH ORS WB SKM<br>NORTH- EAST STATES    |
|        | WEST  | RAJ MP GUJ MAHA GOA                                  |
|        | SOUTH | TLNGN AP KRNTK KER TN LKSDP<br>ANDAMAN & NICOBAR ILS |

|  |              |   |
|--|--------------|---|
| CLOUD DISTRIBUTION                                       | ISOL         | ISOLATED (LESS THAN 25%)                            |
|  | SCT          | SCATTERED (25 TO 50%)                               |
|  | BKN          | BROKEN (51 TO 75%)                                  |
|  | SLD          | SOLID (GREATER THAN 75%)                            |
| CLOUDS TOP TEMPERATURE                                   | CTT          | CLOUD TOP TEMPERATURE                               |
| CONVECTION   | WK CONVTN    | WEAK CONVECTION<br>(CTT GREATER THAN -25°C)         |
|  | MOD CONVTN   | MODERATE CONVECTION<br>(CTT BETWEEN -25°C TO -40°C) |
|  | INT CONVTN   | INTENSE CONVECTION<br>(CTT BETWEEN -41°C TO -70°C)  |
|  | V INT CONVTN | VERY INTENSE CONVECTION<br>(CTT LESS THAN -70°C)    |
| METEOROLOGICAL SUB-DIVISIONS, STATES & UNION TERRITORIES | ARUPR        | ARUNACHAL PRADESH                                   |
|  | BHR          | BIHAR   |
|  | CHTGH        | CHHATTISGARH  |
|  | COTL AP      | COASTAL ANDHRA PRADESH                              |
|  | COTL KRNTK   | COASTAL KARNATAKA                                   |
|  | COTL ORS     | COASTAL ORISSA                                      |
|  | GUJ          | GUJARAT   |
|  | GWB          | GANGETIC WEST BENGAL                                |
|  | HARY         | HARYANA   |
|  | DLH          | DELHI   |
|  | HP           | HIMACHAL PRADESH                                    |
|  | J&K          | JAMMU AND KASHMIR                                   |
|  | JHRKND       | JHARKHAND   |
|  | KER          | KERALA  |
| KKN  | KONKAN       |   |

|                      |                        |                                     |
|----------------------|------------------------|-------------------------------------|
|                      | <b>LKSDP</b>           | <b>LAKSHADWEEP</b>                  |
|                      | <b>M MAHA</b>          | <b>MADHYA MAHARASHTRA</b>           |
|                      | <b>MAHA</b>            | <b>MAHARASHTRA</b>                  |
|                      | <b>MANI</b>            | <b>MANIPUR</b>                      |
|                      | <b>MEGHA</b>           | <b>MEGHALAYA</b>                    |
|                      | <b>MIZO</b>            | <b>MIZORAM</b>                      |
|                      | <b>MP</b>              | <b>MADHYA PRADESH</b>               |
|                      | <b>MRTHWD</b>          | <b>MARATHWADA</b>                   |
|                      | <b>NAGA</b>            | <b>NAGALAND</b>                     |
|                      | <b>N COTL AP</b>       | <b>NORTH COASTAL ANDHRA PRADESH</b> |
|                      | <b>NIK</b>             | <b>NORTH INTERIOR KARNATAKA</b>     |
|                      | <b>ORS</b>             | <b>ORISSA</b>                       |
|                      | <b>PJB</b>             | <b>PUNJAB</b>                       |
|                      | <b>RAJ</b>             | <b>RAJASTHAN</b>                    |
|                      | <b>RYLSM</b>           | <b>RAYALASEEMA</b>                  |
|                      | <b>SAU &amp; KUTCH</b> | <b>SAURASHTRA &amp; KUTCH</b>       |
|                      | <b>SHWB</b>            | <b>SUB-HIMALAYAN WEST BENGAL</b>    |
|                      | <b>SIK</b>             | <b>SOUTH INTERIOR KARNATAKA</b>     |
|                      | <b>SKM</b>             | <b>SIKKIM</b>                       |
|                      | <b>TLNGN</b>           | <b>TELANGANA</b>                    |
|                      | <b>TN</b>              | <b>TAMIL NADU</b>                   |
|                      | <b>TRP</b>             | <b>TRIPURA</b>                      |
|                      | <b>UP</b>              | <b>UTTAR PRADESH</b>                |
|                      | <b>UTRKND</b>          | <b>UTTARAKHAND</b>                  |
|                      | <b>VID</b>             | <b>VIDHARBHA</b>                    |
|                      | <b>SHWB</b>            | <b>SUB HIMALAYAN WEST BENGAL</b>    |
|                      | <b>GWB</b>             | <b>GANGETIC WEST BENGAL</b>         |
|                      | <b>ARSEA</b>           | <b>ARABIAN SEA</b>                  |
|                      | <b>ILS</b>             | <b>ISLANDS</b>                      |
| <b>MISCELLANEOUS</b> | <b>ASSW</b>            | <b>IN ASSOCIATION WITH</b>          |
|                      | <b>ASSTD</b>           | <b>ASSOCIATED</b>                   |
|                      | <b>LLC</b>             | <b>LOW LEVEL CIRCULATION</b>        |
|                      | <b>EMBDD</b>           | <b>EMBEDDED</b>                     |
|                      | <b>N/HOOD</b>          | <b>NEIGHBOURHOOD</b>                |
|                      | <b>EXT</b>             | <b>EXTREME</b>                      |