

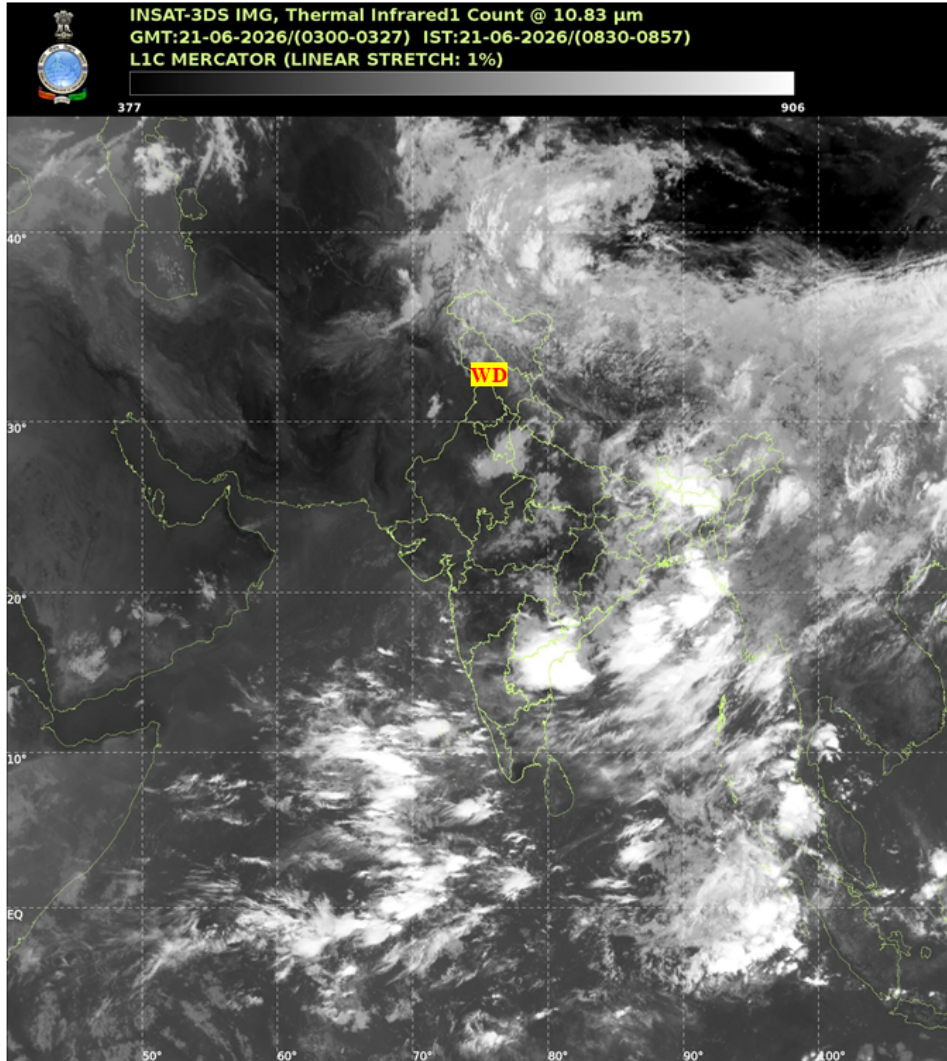


भारत मौसम विज्ञान विभाग  
पृथ्वी विज्ञान मंत्रालय  
India Meteorological Department  
Ministry of Earth Sciences



**SATELLITE BULLETIN BASED ON SATELLITE IMAGERIES AND PRODUCTS**

Date: 2026-06-21 Time: 03:00:00 UTC



TCIN50 DEMS 210300

SATELLITE BULLETIN BASED ON INSAT-3DS PIC OF 210300 UTC (.)

REGION COVERED BETWEEN LAT 50.0°N TO 35.0°S AND LONG 40.0°E TO 125.0°E (.)

**SALIENT FEATURES:**

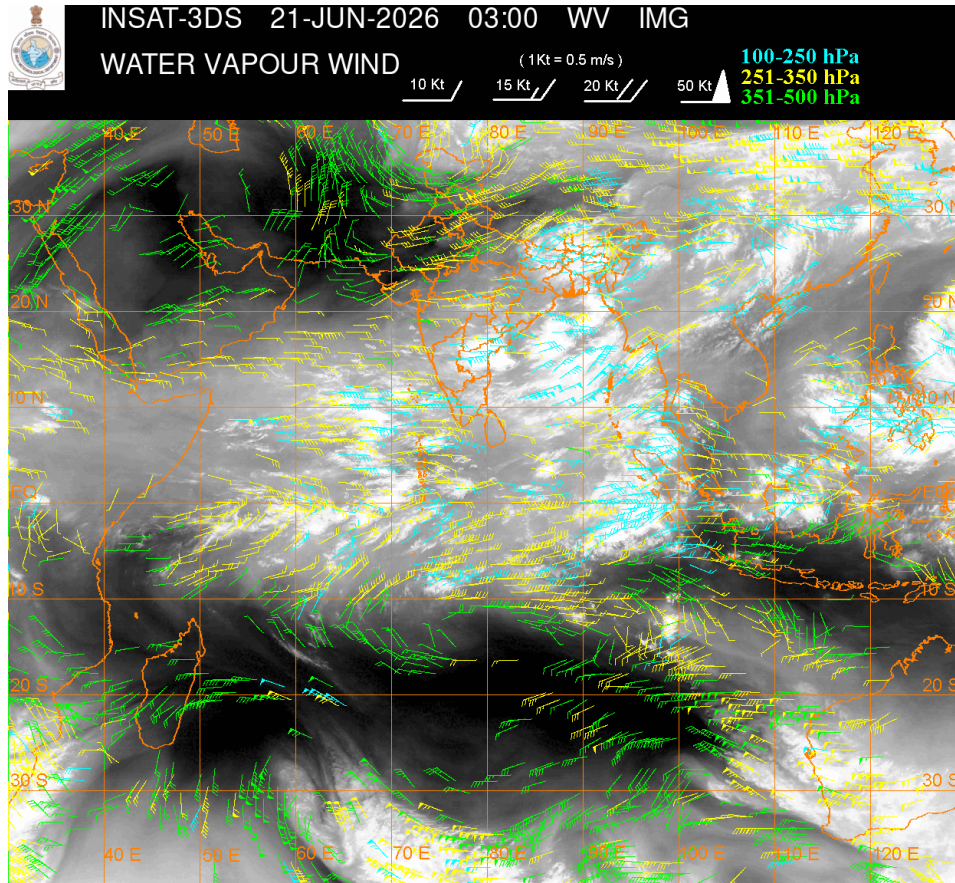
**WESTERN DISTURBANCE (WD):-**

SCT MULTILAYERED CLOUDS OVER NORTH PAK LADAKH J&K HP UTRKND HARY DLH NORTH RAJ  
NW UP TIBET ADJ CHINA IN ASSW WD OVER THE AREA (.)

**CONVECTIVE / THUNDERSTORM ACTIVITY:-**

**INTENSE TO VERY INTENSE CONVECTIVE / THUNDERSTORM ACTIVITY OVER SHWB SKM WEST ASSAM MEGHA TLNGN RYLSMA COTL AP LKSDP ILS AREA (MINIMUM CTT MINUS 70-90 DEGREE CELSIUS) (.)**

**MODERATE TO INTENSE CONVECTIVE / THUNDERSTORM ACTIVITY OVER LADAKH BHR JHRKND S CHTGH ORS GWB REST NORTH-EAST STATES ANDAMAN & NICOBAR ILS AREA(MINIMUM CTT MINUS 40-70 DEGREE CELSIUS) (.)**



**CLOUD DESCRIPTION WITHIN INDIA:**

**NORTH:**

**SCT LOW/MED CLOUDS WITH EMBDD MOD TO INT CONVTN OVER LADAKH AND ISOL WK TO MOD CONVTN OVER J&K HP UTRKND S HARY DLH UP (.) SCT LOW/MED CLOUDS OVER PJB N HARY (.)**

**EAST:**

**SCT TO BKN LOW/MED CLOUDS WITH EMBDD INT TO V INT CONVTN OVER SHWB SKM W ASSAM MEGHA & BD (.) SCT TO BKN LOW/MED CLOUDS WITH EMBDD MOD TO INT CONVTN OVER BHR JHRKND S CHTGH ORS GWB REST NORTH-EAST STATES (.) SCT LOW/MED CLOUDS OVER N CHTGH (.)**

**WEST:**

**SCT LOW/MED CLOUDS WITH EMBDD ISOL WK TO MOD CONVTN OVER N RAJ MP MAHA GOA (.) SCT LOW/MED CLOUDS OVER S RAJ GUJ (.)**

**SOUTH:**

**SCT TO BKN LOW/MED CLOUDS WITH EMBDD INT TO V INT CONVTN OVER TLNGN RYLSM COTL AP LKSDP ILS AREA AND MOD TO INT CONVTN OVER ANDAMAN & NICOBAR ILS AREA (.) SCT LOW/MED CLOUDS WITH EMBDD ISOL WK TO MOD CONVTN OVER KRNTK KER TN (.)**

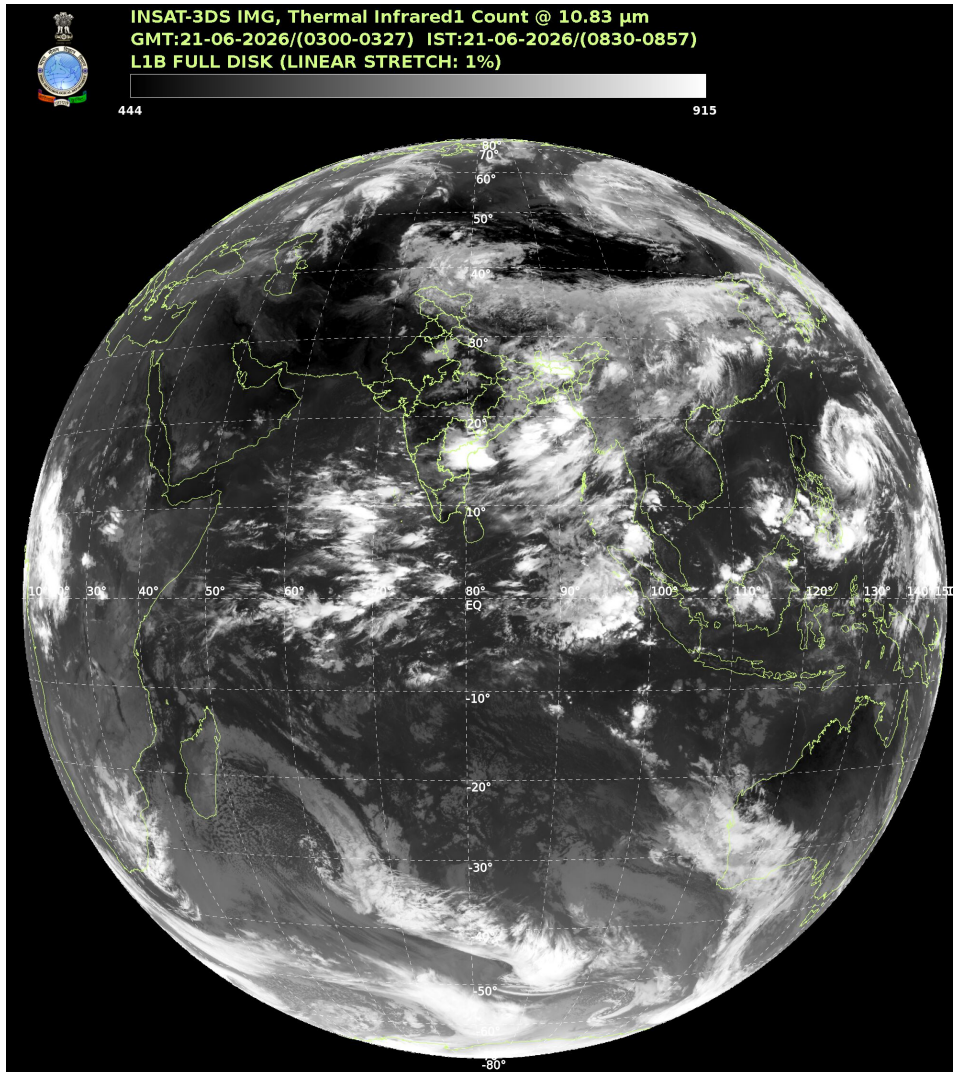
**ARABIAN SEA:**

SCT TO BKN LOW/MED CLOUDS WITH EMBDD INT TO V INT CONVTN OVER SE ARSEA LKSDP ILS AREA & MALDIVES AREA (.) SCT LOW/MED CLOUDS WITH EMBDD MOD TO INT CONVTN OVER EC & SW ARSEA (.)

**BAY OF BENGAL & ANDAMAN SEA:**

SCT TO BKN LOW/MED CLOUDS WITH EMBDD INT TO V INT CONVTN OVER NORTH & CENTRAL BAY ANDAMAN SEA ARAKAN COAST & GULF OF MARTABAN (.) SCT LOW/MED CLOUDS WITH EMBDD MOD TO INT CONVTN OVER SOUTH BAY (.)

**CLOUD DESCRIPTION OUTSIDE INDIA:**



SCT LOW/MED CLOUDS WITH EMBDD MOD TO INT CONVTN OVER MALDIVES AREA NEPAL BHUTAN TIBET CHINA YELLOW SEA ADJ EAST CHINA SEA MYANMAR THAILAND GULF OF THAILAND NORTH LAOS NORTH VIETNAM HAINAN SUMATRA STR OF MALACCA MALAYSIA BORNEO SOUTH CHINA SEA CELEBES ILS & SEA PHILIPPINES SULU SEA AND OVER INDIAN OCEAN BET LAT 5.0N TO 10.0S LONG 50.0E TO 100.0E AND BET LAT 10.0S TO 30.0S LONG 98.0E TO 115.0E (.)

T00 21/0930 HRS IST

NNNN

**LEGEND**

REGION

|   |  |
|---|--|
| <b>NORTH</b>  | <b>J&amp;K HP UTRKND PJB HARY DLH UP</b>                     |
| <b>EAST</b>   | <b>BHR JHRKND CHTGH ORS WB SKM NORTH-EAST STATES</b>         |
| <b>WEST</b>   | <b>RAJ MP GUJ MAHA GOA</b>                                   |
| <b>SOUTH</b>  | <b>TLNGN AP KRNTK KER TN LKSDP ANDAMAN &amp; NICOBAR ILS</b> |
| <b>CLOUD DISTRIBUTION</b>   |  |
| <b>ISOL</b>   | <b>ISOLATED (LESS THAN 25%)</b>                              |
| <b>SCT</b>  | <b>SCATTERED (25 TO 50%)</b>                                 |
| <b>BKN</b>  | <b>BROKEN (51 TO 75%)</b>                                    |
| <b>SLD</b>  | <b>SOLID (GREATER THAN 75%)</b>                              |
| <b>CLOUDS TOP TEMPERATURE</b>                                       |  |
| <b>CTT</b>  | <b>CLOUD TOP TEMPERATURE</b>                                 |
| <b>CONVECTION</b>   |  |
| <b>WK CONVTN</b>  | <b>WEAK CONVECTION (CTT GREATER THAN -25°C)</b>              |
| <b>MOD CONVTN</b>   | <b>MODERATE CONVECTION (CTT BETWEEN -25°C TO -40°C)</b>      |
| <b>INT CONVTN</b>   | <b>INTENSE CONVECTION (CTT BETWEEN -41°C TO -70°C)</b>       |
| <b>V INT CONVTN</b>   | <b>VERY INTENSE CONVECTION (CTT LESS THAN -70°C)</b>         |
| <b>METEOROLOGICAL SUB-DIVISIONS, STATES &amp; UNION TERRITORIES</b> |  |
| <b>J&amp;K</b>  | <b>JAMMU AND KASHMIR</b>                                     |
| <b>HP</b>   | <b>HIMACHAL PRADESH</b>                                      |
| <b>UTRKND</b>   | <b>UTTARAKHAND</b>   |
| <b>PJB</b>  | <b>PUNJAB</b>  |
| <b>HARY</b>   | <b>HARYANA</b>   |
| <b>DLH</b>  | <b>DELHI</b>   |
| <b>BHR</b>  | <b>BIHAR</b>   |
| <b>JHRKND</b>   | <b>JHARKHAND</b>   |
| <b>CHTGH</b>  | <b>CHHATTISGARH</b>  |
| <b>ORS</b>  | <b>ORISSA</b>  |
| <b>GWB</b>  | <b>GANGETIC WEST BENGAL</b>                                  |
| <b>SHWB</b>   | <b>SUB-HIMALAYAN WEST BENGAL</b>                             |
| <b>SKM</b>  | <b>SIKKIM</b>  |
| <b>ARUPR</b>  | <b>ARUNACHAL PRADESH</b>                                     |
| <b>ASSAM</b>  | <b>ASSAM</b>   |
| <b>MEGHA</b>  | <b>MEGHALAYA</b>   |
| <b>MANI</b>   | <b>MANIPUR</b>   |

|                        |                                 |
|------------------------|---------------------------------|
| <b>MIZO</b>            | <b>MIZORAM</b>                  |
| <b>TRP</b>             | <b>TRIPURA</b>                  |
| <b>RAJ</b>             | <b>RAJASTHAN</b>                |
| <b>MP</b>              | <b>MADHYA PRADESH</b>           |
| <b>GUJ</b>             | <b>GUJARAT</b>                  |
| <b>SAU &amp; KUTCH</b> | <b>SAURASHTRA &amp; KUTCH</b>   |
| <b>MAHA</b>            | <b>MAHARASHTRA</b>              |
| <b>M MAHA</b>          | <b>MADHYA MAHARASHTRA</b>       |
| <b>MRTHWD</b>          | <b>MARATHWADA</b>               |
| <b>VID</b>             | <b>VIDARBHA</b>                 |
| <b>KKN</b>             | <b>KONKAN</b>                   |
| <b>TLNGN</b>           | <b>TELANGANA</b>                |
| <b>RYLSM</b>           | <b>RAYALSEEMA</b>               |
| <b>COTL AP</b>         | <b>COASTAL ANDHRA PRADESH</b>   |
| <b>NIK</b>             | <b>NORTH INTERIOR KARNATAKA</b> |
| <b>SIK</b>             | <b>SOUTH INTERIOR KARNATAKA</b> |
| <b>COTL KRNTK</b>      | <b>COASTAL KARNATAKA</b>        |
| <b>KER</b>             | <b>KERALA</b>                   |
| <b>TN</b>              | <b>TAMILNADU</b>                |
| <b>LKSDP</b>           | <b>LAKSHADWEEP</b>              |
| <b>ILS</b>             | <b>ISLANDS</b>                  |
| <b>ARSEA</b>           | <b>ARABIAN SEA</b>              |
| <b>MISCELLANEOUS</b>   |                                 |
| <b>ASSW</b>            | <b>IN ASSOCIATION WITH</b>      |
| <b>ASSTD</b>           | <b>ASSOCIATED</b>               |
| <b>LLC</b>             | <b>LOW LEVEL CIRCULATION</b>    |
| <b>EMBDD</b>           | <b>EMBEDDED</b>                 |
| <b>N/HOOD</b>          | <b>NEIGHBOURHOOD</b>            |
| <b>EXT</b>             | <b>EXTREME</b>                  |