

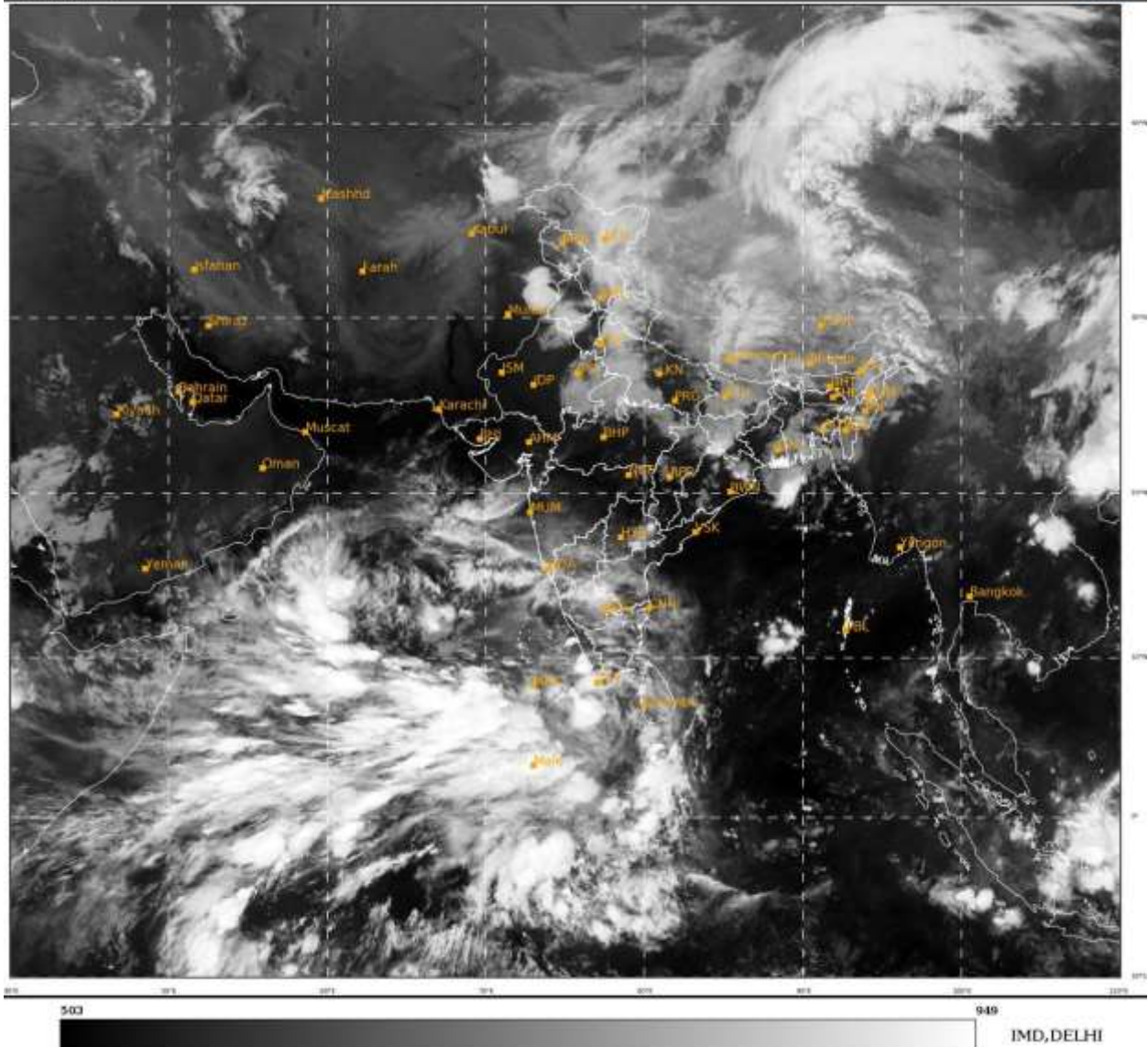


**SATELLITE BULLETIN BASED ON SATELLITE IMAGERIES  
AND PRODUCTS**

**13.05.2021 TIME 0000UTC**

SAT : INSAT-3D IMG  
IMG\_TIR1 10.8 um  
LIC Mercator

13-05-2021/(0000 to 0026) GMT  
13-05-2021/(0530 to 0556) IST



TCIN50 DEMS 130000

SATELLITE BULLETIN BASED ON INSAT-3D PICO F 130000UTC (.)

REGION COVERED BETWEEN LAT 50.0°N TO 30.0°S AND LONG 40.0°E TO 125.0°E (.)

**SALIENT FEATURES:-**

**WESTERN DISTURBANCE (WD):-**

SCT MULTILAYERED CLOUDS OVER EXT NE PAK J&K LADAKH HP N UTRKND PJB HARY DLH UP NEPAL TIBET ADJ CHINA AND N/HOOD IN ASSW **WD** OVER THE AREA (.)

SCT MULTILAYERED CLOUDS OVER S CASPIAN SEA W IRAN & N/HOOD IN ASSW **ANOTHER WD** OVER THE AREA (.)

**CLOUDS DESCRIPTION WITHIN INDIA:-**

**NORTH:-**

BKN LOW/MED CLOUDS WITH EMBDD MOD TO INT CONVTN OVER LADKAH J&K HP SW PJB EXT E & W HARY(.) SCT LOW/MED CLOUDS WITH EMBDD WK CONVTN OVER REST UP (.)

**EAST:-**

SCT LOW/MED CLOUDS WITH EMBDD MOD TO INT CONVTN OVER EXT NE CHTGH N ORS EXT E ASSAM (.) SCT LOW/MED CLOUDS WITH EMBDD WK TO MOD CONVTN OVER REST NE STATES BHR REST CHTGH REST ORS (.) SCT LOW/MED CLOUDS OVER REST PARTS OF THE REGION (.)

**WEST:-**

SCT LOW/MED CLOUDS WITH EMBDD WK TO MOD CONVTN OVER E RAJ N MP S KKN GOA (.) SCT LOW/MED CLOUDS OVER EXT S GUJ VID & SOUTH OF M MAHA (.)

**SOUTH:-**

BKN LOW/MED CLOUDS WITH EMBDD MOD TO INT CONVTN OVER THE REGION EXCEPT SCT LOW/MED CLOUDS WITH EMBDD WK TO MOD CONVTN OVER W TLNGN AND NO SIG CLOUDS OVER NC AP AND BAY ILS (.)

**ARABIAN SEA:-**

BKN LOW/MED CLOUDS WITH EMBDD MOD TO INT CONVTN OVER CENTRAL & S ARSEA ADJ EQUATORIAL INDIAN OCEAN LAKSHADWEEP MALDIVES & COMORIN (.)

**BAY OF BENGAL & ANDAMAN SEA:-**

SCT LOW/MED CLOUDS WITH EMBDD ISOL MOD TO TO INT CONVTN OVER EXT SC BAY (.)

**CLOUDS DESCRIPTION OUTSIDE INDIA:-**

SCT LOW/MED CLOUDS WITH EMBDD MOD TO INT CONVTN OVER SRI LANKA GULF OF MANNAR PALK STR N PAK NEPAL BHUTAN TIBET CHINA E CHINA SEA TAIWAN MYANMAR CAMBODIA SUMATRA ADJ W COAST STR OF MALACCA MALAY PENINSULA BORNEO S CHINA SEA JAVA ILS CELEBES ILS & SEA PHILIPPINES SULU SEA (.)

TOO:-13/0625F=

NNNN

**LEGEND:-**

REGION	NORTH	J&K HP PJB HARY DLH UP UTRKND
	EAST	BHR JHRKND CHTGH ORS WB SKMNORTH-EAST STATES
	WEST	RAJ MP GUJ MAHA GOA
	SOUTH	TLNGN AP KRNTK KER TN LKSDP ANDAMAN & NICOBAR ILS

CLOUD DISTRIBUTION	ISOL	ISOLATED (LESS THAN 25%)
	SCT	SCATTERED (25 TO 50%)
	BKN	BROKEN (51 TO 75%)

	<b>SLD</b>	<b>SOLID (GREATER THAN 75%)</b>
<b>CLOUDS TOP TEMPERATURE</b>	<b>CTT</b>	<b>CLOUD TOP TEMPERATURE</b>
<b>CONVECTION</b>	<b>WK CONVTN</b>	<b>WEAK CONVECTION (CTT GREATER THAN -25°C)</b>
	<b>MOD CONVTN</b>	<b>MODERATE CONVECTION (CTT BETWEEN -25°C TO -40°C)</b>
	<b>INT CONVTN</b>	<b>INTENSE CONVECTION (CTT BETWEEN -41°C TO -70°C)</b>
	<b>V INT CONVTN</b>	<b>VERY INTENSE CONVECTION (CTT LESS THAN -70°C)</b>
<b>METEOROLOGICAL SUB-DIVISIONS, STATES &amp; UNION TERRITORIES</b>	<b>ARUPR</b>	<b>ARUNACHAL PRADESH</b>
	<b>BHR</b>	<b>BIHAR</b>
	<b>CHTGH</b>	<b>CHHATTISGARH</b>
	<b>COTL AP</b>	<b>COASTAL ANDHRA PRADESH</b>
	<b>COTL KRNTK</b>	<b>COASTAL KARNATAKA</b>
	<b>COTL ORS</b>	<b>COASTAL ORISSA</b>
	<b>GUJ</b>	<b>GUJARAT</b>
	<b>GWB</b>	<b>GANGETIC WEST BENGAL</b>
	<b>HARY</b>	<b>HARYANA</b>
	<b>DLH</b>	<b>DELHI</b>
	<b>HP</b>	<b>HIMACHAL PRADESH</b>
	<b>J&amp;K</b>	<b>JAMMU AND KASHMIR</b>
	<b>JHRKND</b>	<b>JHARKHAND</b>
	<b>KER</b>	<b>KERALA</b>
	<b>KKN</b>	<b>KONKAN</b>
	<b>LKSDP</b>	<b>LAKSHADWEEP</b>
	<b>M MAHA</b>	<b>MADHYA MAHARASHTRA</b>
	<b>MAHA</b>	<b>MAHARASHTRA</b>
	<b>MANI</b>	<b>MANIPUR</b>
	<b>MEGHA</b>	<b>MEGHALAYA</b>
	<b>MIZO</b>	<b>MIZORAM</b>
	<b>MP</b>	<b>MADHYA PRADESH</b>
	<b>MRTHWD</b>	<b>MARATHWADA</b>
	<b>NAGA</b>	<b>NAGALAND</b>
	<b>N COTL AP</b>	<b>NORTH COASTAL ANDHRA PRADESH</b>
	<b>NIK</b>	<b>NORTH INTERIOR KARNATAKA</b>
	<b>ORS</b>	<b>ORISSA</b>
	<b>PJB</b>	<b>PUNJAB</b>
	<b>RAJ</b>	<b>RAJASTHAN</b>
	<b>RYLSM</b>	<b>RAYALASEEMA</b>
	<b>SAU &amp; KUTCH</b>	<b>SAURASHTRA &amp; KUTCH</b>
	<b>SHWB</b>	<b>SUB-HIMALAYAN WEST BENGAL</b>
<b>SIK</b>	<b>SOUTH INTERIOR KARNATAKA</b>	
<b>SKM</b>	<b>SIKKIM</b>	
<b>TLNGN</b>	<b>TELANGANA</b>	

	<b>TN</b>	<b>TAMIL NADU</b>
	<b>TRP</b>	<b>TRIPURA</b>
	<b>UP</b>	<b>UTTAR PRADESH</b>
	<b>UTRKND</b>	<b>UTTARAKHAND</b>
	<b>VID</b>	<b>VIDHARBHA</b>
	<b>SHWB</b>	<b>SUB HIMALAYAN WEST BENGAL</b>
	<b>GWB</b>	<b>GANGETIC WEST BENGAL</b>
	<b>ARSEA</b>	<b>ARABIAN SEA</b>
	<b>ILS</b>	<b>ISLANDS</b>
<b>MISCELLANEOUS</b>	<b>ASSW</b>	<b>IN ASSOCIATION WITH</b>
	<b>ASSTD</b>	<b>ASSOCIATED</b>
	<b>LLC</b>	<b>LOW LEVEL CIRCULATION</b>
	<b>EMBDD</b>	<b>EMBEDDED</b>
	<b>N/HOOD</b>	<b>NEIGHBOURHOOD</b>
	<b>EXT</b>	<b>EXTREME</b>