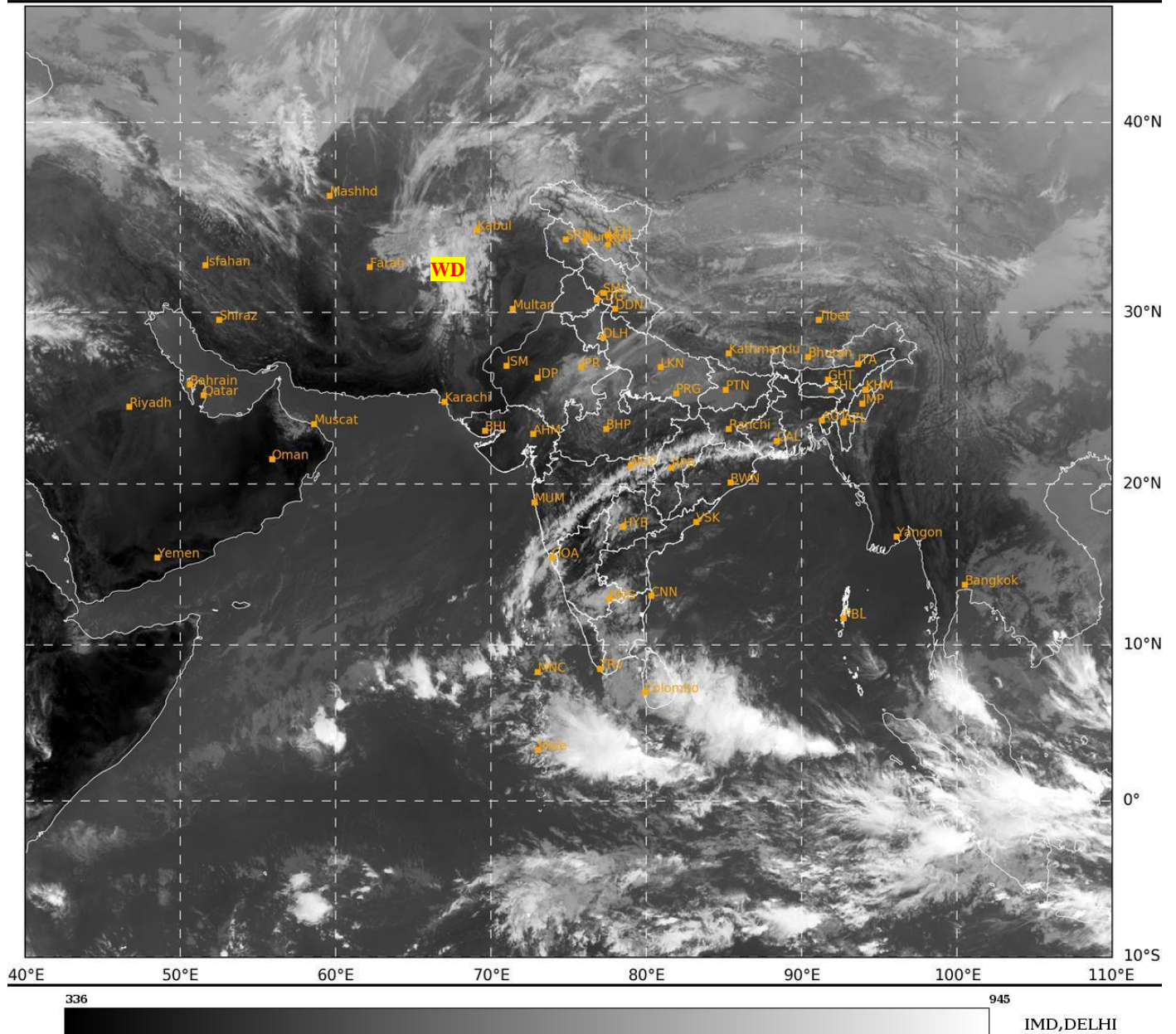




**SATELLITE BULLETIN BASED ON SATELLITE
IMAGERIES AND PRODUCTS**
15.01.2025 TIME 0900 UTC

SAT : INSAT-3DR IMG
IMG_TIR1 10.8 um
LIC Mercator

15-01-2025/(0845 to 0912) GMT
15-01-2025/(1415 to 1442) IST



TCIN50 DEMS 150900

SATELLITE BULLETIN BASED ON INSAT-3DR PIC OF 150845 UTC (.)

REGION COVERED BETWEEN LAT 50.0°N TO 35.0°S AND LONG 40.0°E TO 125.0°E (.)

SALIENT FEATURES:-

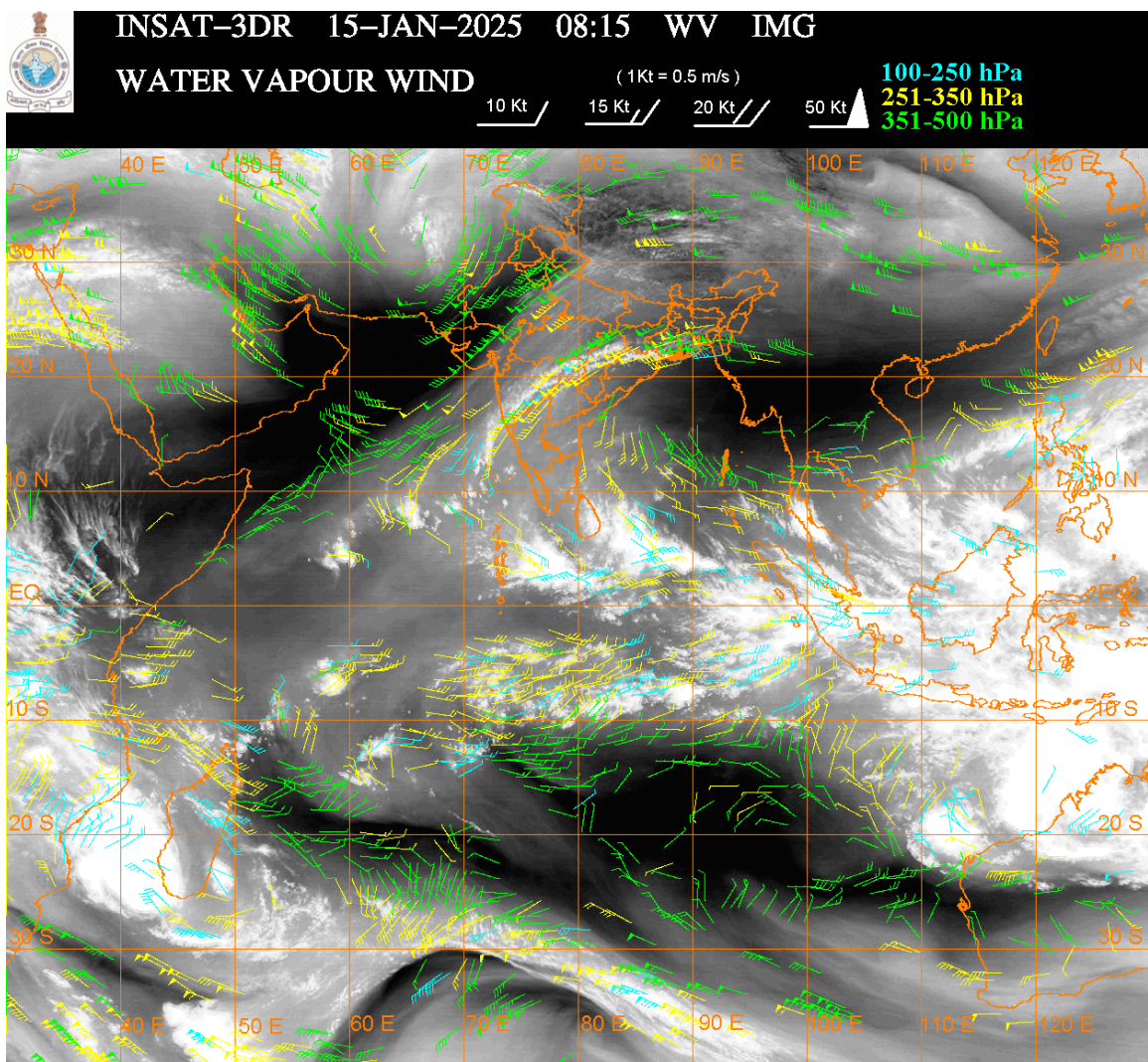
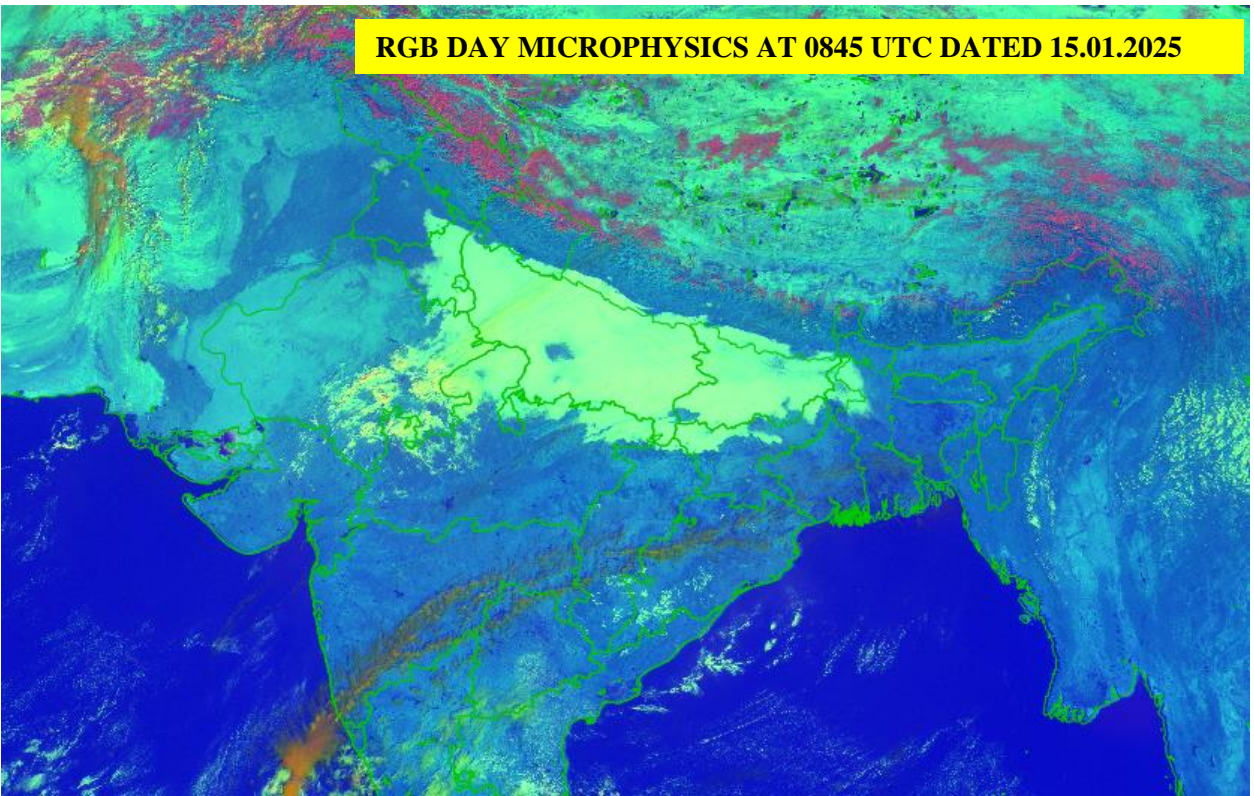
WESTERN DISTURBANCE:-

SCT MULTILAYERED CLOUDS OVER AFGAN ADJ PAK AND N/HOOD IN ASSW **WD** OVER THE AREA (.)

FOG / LOW CLOUDS:-

RGB COMPOSITE DAY MICROPHYSICS IMAGERY OF INSAT 3DR (RAPID) AT 0845 UTC SHOWS SCT TO BKN FOG / LOW CLOUDS OVER EC PJB E HARY SE UTRKND S NEPAL UP BHR E RAJ EXT N MP N JHRKND AND ISOL FOG / LOW CLOUDS OVER DLH N GUJ S CHTGH S ORS TLNGN RYLSM N COTL AP (.)

RGB DAY MICROPHYSICS AT 0845 UTC DATED 15.01.2025



CLOUDS DESCRIPTION WITHIN INDIA:-

NORTH:-

SCT LOW/MED CLOUDS WITH EMBDD ISOL WK TO MOD CONVTN OVER J&K LADAKH N HP N UTRKND (.) ISOL LOW/MED CLOUDS OVER S HP S UTRKND HARY UP (.)

EAST:-

SCT LOW/MED CLOUDS WITH EMBDD ISOL WK TO MOD CONVTN OVER CHTGH ORS GWB SKM ARUPR & S BD (.) ISOL LOW/MED CLOUDS OVER SHWB REST NE STATES (.)

WEST:-

SCT LOW/MED CLOUDS WITH EMBDD MOD CONVTN OVER E RAJ MAHA GOA (.) ISOL LOW/MED CLOUDS OVER W MP E GUJ (.)

SOUTH:-

SCT LOW/MED CLOUDS WITH EMBDD INT TO V INT CONVTN OVER S COTL TN (.) SCT LOW/MED CLOUDS WITH EMBDD MOD TO INT CONVTN OVER S TN LKSDP ILS AREA (.) SCT LOW/MED CLOUDS WITH EMBDD ISOL WK TO MOD CONVTN OVER S COTL AP KRNTK RYLSM KER REST TN (.) SCT LOW/MED CLOUDS OVER N COTL AP ANDAMAN & NICOBAR ILS (.)

ARABIAN SEA:-

SCT LOW/MED CLOUDS WITH EMBDD ISOL MOD TO INT CONVTN OVER EC & SOUTH ARSEA LKSDP ILS AREA MALDIVES AND COMORIN AREA (.) SCT LOW/MED CLOUDS WITH EMBDD ISOL WK CONVTN OVER NORTH & WC ARSEA (.)

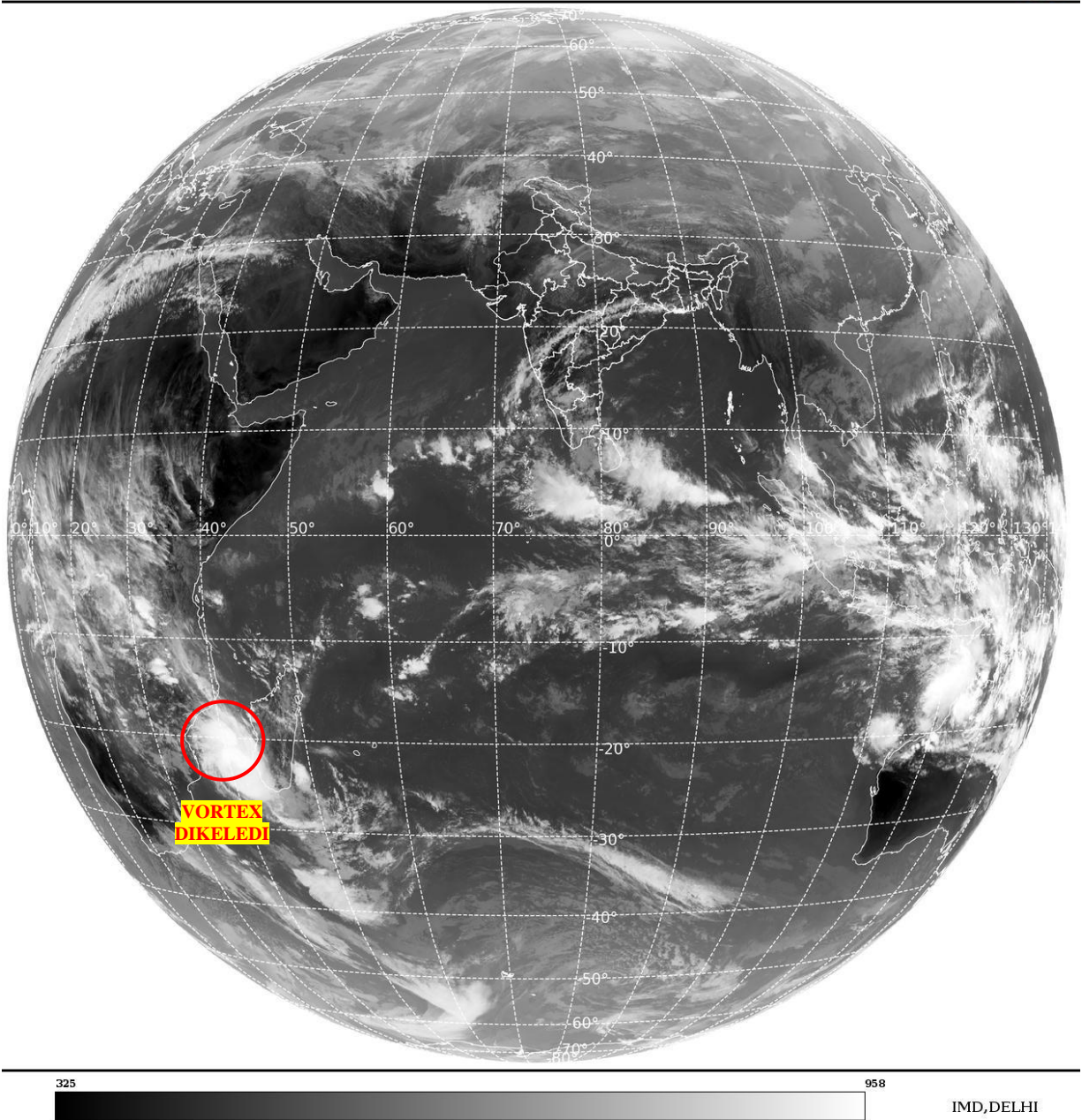
BAY OF BENGAL & ANDAMAN SEA:-

SCT LOW/MED CLOUDS WITH EMBDD INT TO V INT CONVTN OVER SOUTH BAY ADJ EQUATORIAL INDIAN OCEAN (.) SCT LOW/MED CLOUDS WITH EMBDD ISOL WK TO MOD CONVTN OVER OVER REST BAY & ANDAMAN SEA (.)

CLOUDS DESCRIPTION OUTSIDE INDIA:-

SAT : INSAT-3DR IMG
Thermal Infrared1 Count 10.8 um
LIB FULL DISK

15-01-2025/(0845 to 0912) GMT
15-01-2025/(1415 to 1442) IST



VORTEX (DIKELEDI) OVER SOUTH INDIAN OCEAN (MOZAMBIQUE CHANNEL):-

VORTEX (**DIKELEDI**) OVER SOUTH INDIAN OCEAN (**AREA D75**) CENTERED NEAR **22.6S / 41.2E** (.) INTENSITY **T4.5/4.5** (.) MAXIMUM SUSTAINED WINDS **64-89 KTS** (.) ASSTD SCT TO BKN LOW/MED CLOUDS WITH EMBDD INT TO V INT CONVTN OVER AREA BET LAT 16.0S TO 26.0S LONG 37.0E TO 44.0E MOZAMBIQUE MOZAMBIQUE CHANNEL & MADAGASCAR (.)

SCT LOW/MED CLOUDS WITH EMBDD MOD TO INT CONVTN OVER SRI LANKA PALK STR GULF OF MANNAR MALDIVES GULF OF THAILAND SUMATRA STR OF MALACCA MALAYSIA

**BORNEO SOUTH CHINA SEA JAVA ILS & SEA CELEBES ILS & SEA PHILIPPINES SULU SEA
MADAGASCAR MOZAMBIQUE CHANNEL AND OVER INDIAN OCEAN BET LAT 5.0N TO 20.0S
LONG 40.0E TO 125.0E (.)**

TOO 15/1530 EF=

NNNN

LEGEND:-

REGION	NORTH	J&K HP PJB HARY DLH UP UTRKND
	EAST	BHR JHRKND CHTGH ORS WB SKM NORTH- EAST STATES
	WEST	RAJ MP GUJ MAHA GOA
	SOUTH	TLNGN AP KRNTK KER TN LKSDP ANDAMAN & NICOBAR ILS
CLOUD DISTRIBUTION	ISOL	ISOLATED (LESS THAN 25%)
	SCT	SCATTERED (25 TO 50%)
	BKN	BROKEN (51 TO 75%)
	SLD	SOLID (GREATER THAN 75%)
CLOUDS TOP TEMPERATURE	CTT	CLOUD TOP TEMPERATURE
CONVECTION	WK CONVTN	WEAK CONVECTION (CTT GREATER THAN -25°C)
	MOD CONVTN	MODERATE CONVECTION (CTT BETWEEN -25°C TO -40°C)
	INT CONVTN	INTENSE CONVECTION (CTT BETWEEN -41°C TO -70°C)
	V INT CONVTN	VERY INTENSE CONVECTION (CTT LESS THAN -70°C)
METEOROLOGICAL SUB- DIVISIONS, STATES & UNION TERITORIES	ARUPR	ARUNACHAL PRADESH
	BHR	BIHAR
	CHTGH	CHHATTISGARH
	COTL AP	COASTAL ANDHRA PRADESH
	COTL KRNTK	COASTAL KARNATAKA
	COTL ORS	COASTAL ORISSA
	GUJ	GUJARAT
	GWB	GANGETIC WEST BENGAL
	HARY	HARYANA
	DLH	DELHI
	HP	HIMACHAL PRADESH
	J&K	JAMMU AND KASHMIR
	JHRKND	JHARKHAND
	KER	KERALA
	KKN	KONKAN
	LKSDP	LAKSHADWEEP
	M MAHA	MADHYA MAHARASHTRA
	MAHA	MAHARASHTRA
	MANI	MANIPUR
MEGHA	MEGHALAYA	

	MIZO	MIZORAM
	MP	MADHYA PRADESH
	MRTHWD	MARATHWADA
	NAGA	NAGALAND
	N COTL AP	NORTH COASTAL ANDHRA PRADESH
	NIK	NORTH INTERIOR KARNATAKA
	ORS	ORISSA
	PJB	PUNJAB
	RAJ	RAJASTHAN
	RYLSM	RAYALASEEMA
	SAU & KUTCH	SAURASHTRA & KUTCH
	SHWB	SUB-HIMALAYAN WEST BENGAL
	SIK	SOUTH INTERIOR KARNATAKA
	SKM	SIKKIM
	TLNGN	TELANGANA
	TN	TAMIL NADU
	TRP	TRIPURA
	UP	UTTAR PRADESH
	UTRKND	UTTARAKHAND
	VID	VIDHARBHA
	SHWB	SUB HIMALAYAN WEST BENGAL
	GWB	GANGETIC WEST BENGAL
	ARSEA	ARABIAN SEA
	ILS	ISLANDS
MISCELLANEOUS	ASSW	IN ASSOCIATION WITH
	ASSTD	ASSOCIATED
	LLC	LOW LEVEL CIRCULATION
	EMBDD	EMBEDDED
	N/HOOD	NEIGHBOURHOOD
	EXT	EXTREME