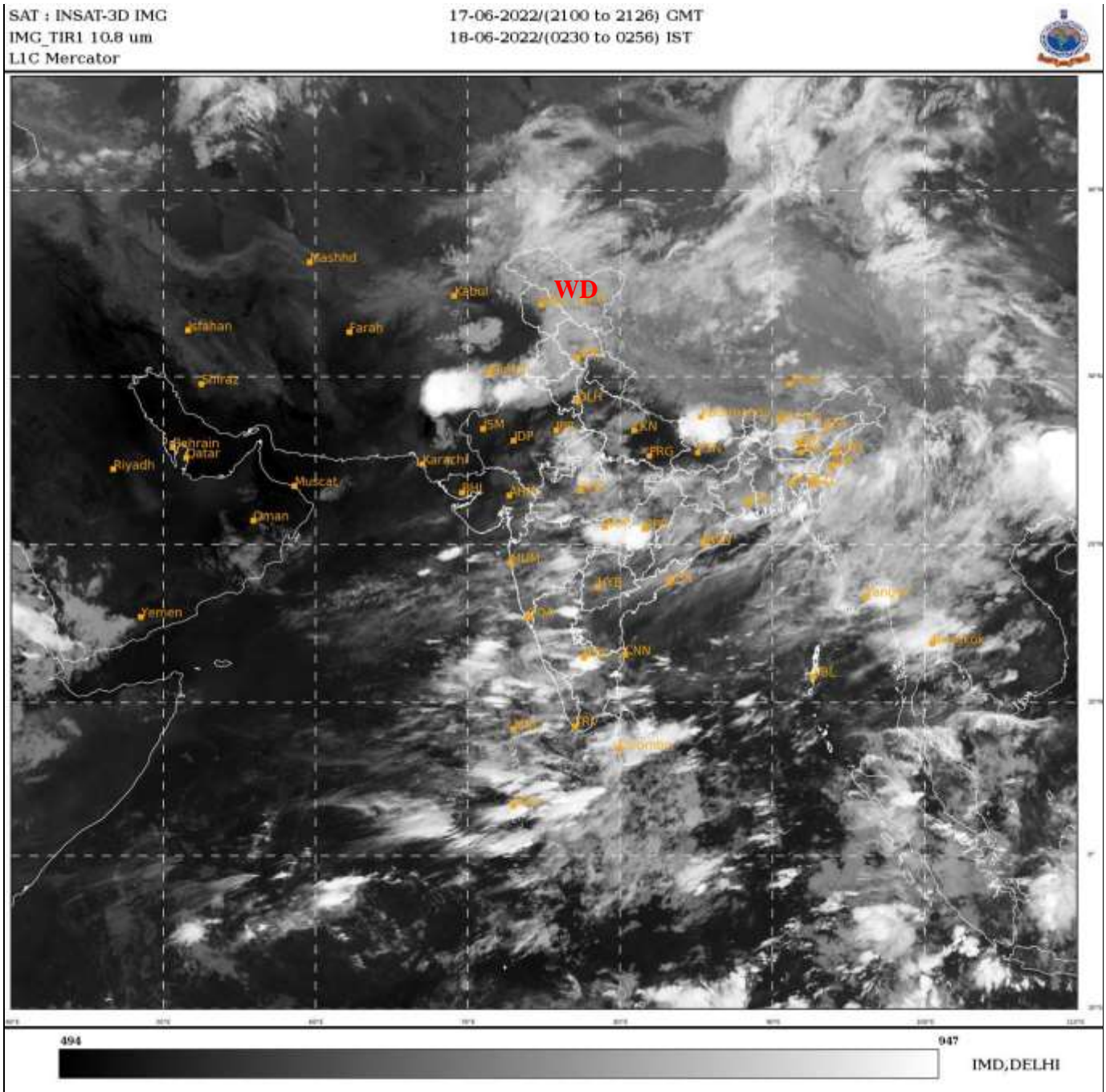




**SATELLITE BULLETIN BASED ON SATELLITE
IMAGERIES AND PRODUCTS**
17.06.2022 TIME 2100 UTC



TCIN50 DEMS 172100

SATELLITE BULLETIN BASED ON INSAT-3D PIC OF 172100 UTC (.)

REGION COVERED BETWEEN LAT 50.0°N TO 30.0°S AND LONG 40.0°E TO 125.0°E (.)

SALIENT FEATURES:-

WESTERN DISTURBANCE (WD):-

SCT TO BKN MULTILAYERED CLOUDS OVER AFGAN N PAK J&K LADAKH HP PJB E HARY DLH NE RAJ UP UTRKND TIBET ADJ CHINA AND N/HOOD IN ASSW **WD** OVER THE AREA (.)

THUNDERSTORM / CONVECTIVE ACTIVITY:-

THUNDERSTORM / CONVECTIVE ACTIVITIES OBSERVED OVER W PJB W HARY W UP BHR JHRKND CHTGH ORS GWB SHWB NE STATES E RAJ MP NW GUJ MAHA GOA KRNTK TLNGN KER LKSDP ILS (.)

DUST:-

METEOSAT-8 RGB DUST PRODUCT AT 2130 UTC INDICATES DUST OVER W RAJ ADJ PAK (.)

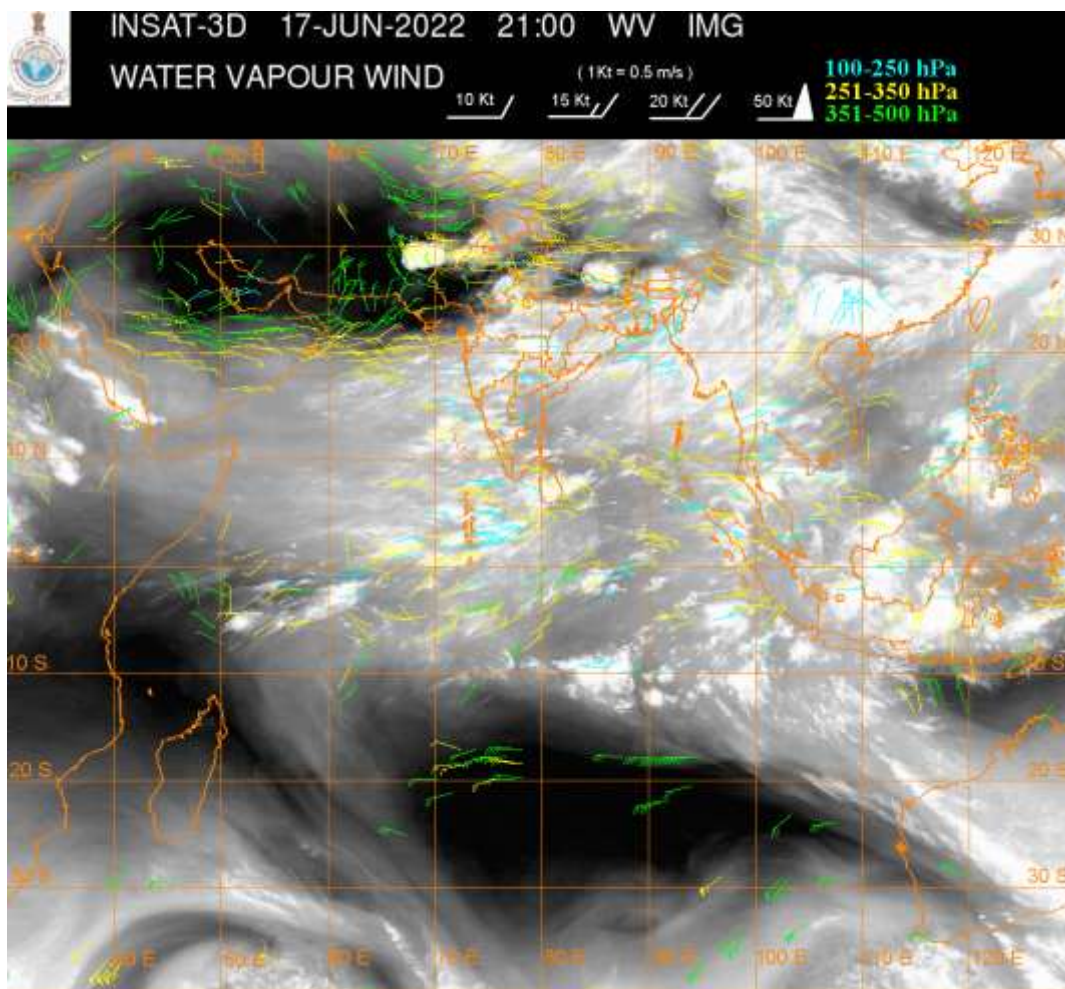
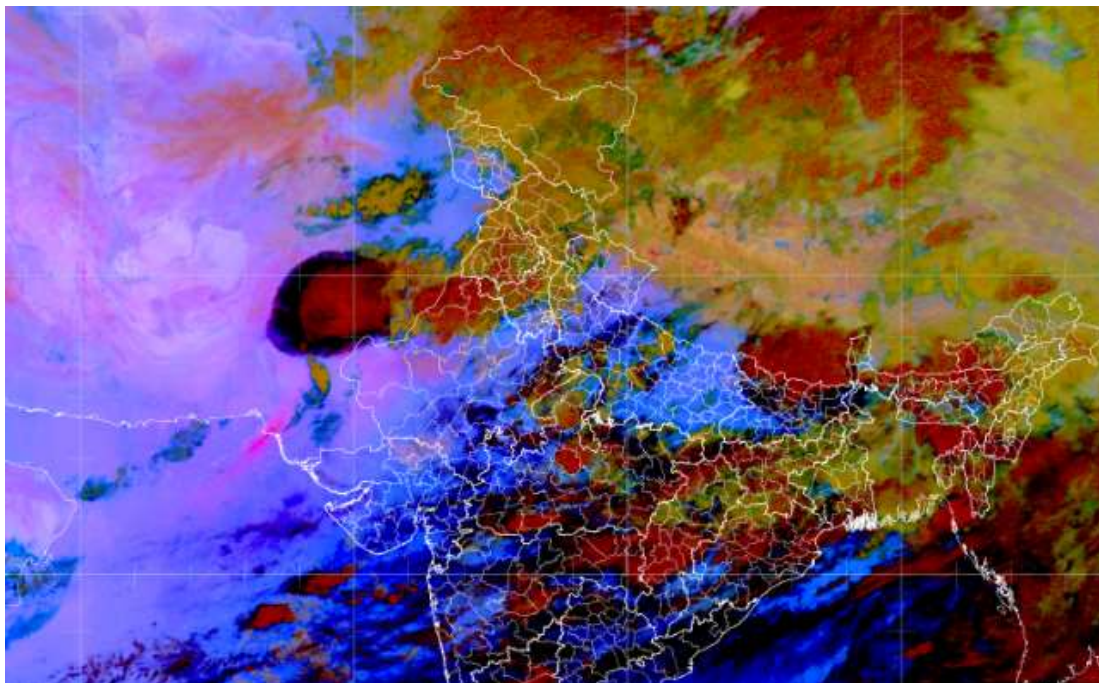
PRECIPITATION NOWCASTING:-

(BASED ON SCOPE NOWCASTING TOOL AT 2100 UTC AT A LEAD TIME OF 03 HRS (MM/HR):-

RAINFALL UP TO 10-20 MM LIKELY OVER EXT N BHR & VID (.)

RAINFALL UP TO 5-10 MM LIKELY OVER NE RAJ SW MP SW CHTGH N SHWB W ASSAM N TRP KRNTK S TLNGN NE TN LKSDP ILS AREA (.)

RAINFALL UP TO 0.5-5 MM LIKELY OVER E J&K E PJB N MP N JHRKND GWB REST NE STATES GOA N COTL AP (.)



CLOUDS DESCRIPTION WITHIN INDIA:-

NORTH:-

SCT TO BKN LOW/MED CLOUDS WITH EMBDD MOD TO INT CONVTN OVER EXT NE UP (.)SCT TO BKN LOW/MED CLOUDS WITH EMBDD WK TO MOD CONVTN OVER LADAKH J&K HP EXT N UTRKND PJB W HARY W UP (.) SCT LOW/MED CLOUDS OVER REST UTRKND E HARY (.)

EAST:-

SCT TO BKN LOW/MED CLOUDS WITH EMBDD INT TO V INT CONVTN OVER SW CHTGH EXT N BHR (MINIMUM CTT MINUS 76 DEG C) (.) SCT TO BKN LOW/MED CLOUDS WITH EMBDD MOD TO INT CONVTN OVER N SHWB ASSAM MANI MIZO AND WK TO MOD CONVTN OVER REST BHR JHTKND REST CHTGH ORS GWB SOUTH SHWB SKM ARUPR MEGHA NAGA TRP (.)

WEST:-

SCT TO BKN LOW/MED CLOUDS WITH EMBDD MOD TO INT CONVTN OVER N RAJ MP VID MRTHWD AND WK TO MOD CONVTN OVER REST MAHA & GOA (.) SCT LOW/MED CLOUDS OVER SE RAJ E GUJ (.)

SOUTH:-

SCT TO BKN LOW/MED CLOUDS WITH EMBDD INT TO V INT CONVTN OVER E KRNTK ADJ W RYLSM EXT N TN (MINIMUM CTT MINUS 80 DEG C) (.) SCT TO BKN LOW/MED CLOUDS WITH EMBDD MOD TO INT CONVTN OVER W KRNTK LKSDP ILS (.) SCT LOW/MED CLOUDS WITH EMBDD WK TO MOD CONVTN OVER N TLNGN N COTL AP KER REST TN S ANDAMAN ILS (.) SCT LOW/MED CLOUDS OVER E RYLSM S COTL AP N ANDAMAN & NICOBAR ILS (.)

ARABIAN SEA:-

SCT TO BKN LOW/MED CLOUDS WITH EMBDD INT TO V INT CONVTN OVER SE ARSEA AND LKSDP ILS AREA (.) SCT LOW/MED CLOUDS WITH EMBDD MOD TO INT CONVTN OVER EC ARSEA COMORIN AREA AND ISOL WK TO MOD CONVTN OVER NE ARSEA (.)

BAY OF BENGAL & ANDAMAN SEA:-

SCT LOW/MED CLOUDS WITH EMBDD INT TO V INT CONVTN OVER EXT SW BAY (.) SCT LOW/MED CLOUDS WITH EMBDD MOD TO INT CONVTN OVER NORTH BAY ARAKAN COAST SE BAY TENASSERIM COAST GULF OF MARTABAN AND ISOL WK TO MOD CONVTN OVER CENTRAL BAY S ANDAMAN SEA (.)

CLOUDS DESCRIPTION OUTSIDE INDIA:-

SCT LOW/MED CLOUDS WITH EMBDD MOD TO INT CONVTN OVER SRI LANKA PALK STR GULF OF MANNAR MALDIVES NEPAL BHUTAN TIBET CHINA YELLOW SEA E CHINA SEA TAIWAN MYANMAR THAILAND GULF OF THAILAND CAMBODIA LAOS VIETNAM GULF OF TONKIN HAINAN SUMATRA STR OF MALACCA MALAYSIA BORNEO SOUTH CHINA SEA JAVA ILS & SEA CELEBES ILS & SEA PHILIPPINES SULU SEA AND OVER INDIAN OCEAN BET LAT 5.0N TO 14.0S LONG 50.0E TO 90.0E AND BET LAT 5.0N TO 20.0S LONG 90.0E TO 115.0E (.)

TOO 18/0450 HRS IST=

NNNN

LEGEND:-

REGION	NORTH	J&K HP PJB HARY DLH UP UTRKND
	EAST	BHR JHRKND CHTGH OR WB SKM NORTH- EAST STATES
	WEST	RAJ MP GUJ MAHA GOA
	SOUTH	TLNGN AP KRNTK KER TN LKSDP ANDAMAN & NICOBAR ILS

CLOUD DISTRIBUTION	ISOL	ISOLATED (LESS THAN 25%)
	SCT	SCATTERED (25 TO 50%)
	BKN	BROKEN (51 TO 75%)
	SLD	SOLID (GREATER THAN 75%)

CLOUDS TOP TEMPERATURE	CTT	CLOUD TOP TEMPERATURE
CONVECTION	WK CONVTN	WEAK CONVECTION (CTT GREATER THAN -25°C)
	MOD CONVTN	MODERATE CONVECTION (CTT BETWEEN -25°C TO -40°C)
	INT CONVTN	INTENSE CONVECTION (CTT BETWEEN -41°C TO -70°C)
	V INT CONVTN	VERY INTENSE CONVECTION (CTT LESS THAN -70°C)
METEOROLOGICAL SUB-DIVISIONS, STATES & UNION TERRITORIES	ARUPR	ARUNACHAL PRADESH
	BHR	BIHAR
	CHTGH	CHHATTISGARH
	COTL AP	COASTAL ANDHRA PRADESH
	COTL KRNTK	COASTAL KARNATAKA
	COTL ORS	COASTAL ORISSA
	GUJ	GUJARAT
	GWB	GANGETIC WEST BENGAL
	HARY	HARYANA
	DLH	DELHI
	HP	HIMACHAL PRADESH
	J&K	JAMMU AND KASHMIR
	JHRKND	JHARKHAND
	KER	KERALA
	KKN	KONKAN
	LKSDP	LAKSHADWEEP
	M MAHA	MADHYA MAHARASHTRA
	MAHA	MAHARASHTRA
	MANI	MANIPUR
	MEGHA	MEGHALAYA
MIZO	MIZORAM	
MP	MADHYA PRADESH	
	MRTHWD	MARATHWADA
	NAGA	NAGALAND
	N COTL AP	NORTH COASTAL ANDHRA PRADESH
	NIK	NORTH INTERIOR KARNATAKA
	ORS	ORISSA
	PJB	PUNJAB
	RAJ	RAJASTHAN
	RYLSM	RAYALASEEMA
	SAU & KUTCH	SAURASHTRA & KUTCH
	SHWB	SUB-HIMALAYAN WEST BENGAL
	SIK	SOUTH INTERIOR KARNATAKA
	SKM	SIKKIM
	TLNGN	TELANGANA
	TN	TAMIL NADU
	TRP	TRIPURA
	UP	UTTAR PRADESH

	UTRKND	UTTARAKHAND
	VID	VIDHARBHA
	SHWB	SUB HIMALAYAN WEST BENGAL
	GWB	GANGETIC WEST BENGAL
	ARSEA	ARABIAN SEA
	ILS	ISLANDS
MISCELLANEOUS	ASSW	IN ASSOCIATION WITH
	ASSTD	ASSOCIATED
	LLC	LOW LEVEL CIRCULATION
	EMBDD	EMBEDDED
	N/HOOD	NEIGHBOURHOOD
	EXT	EXTREME