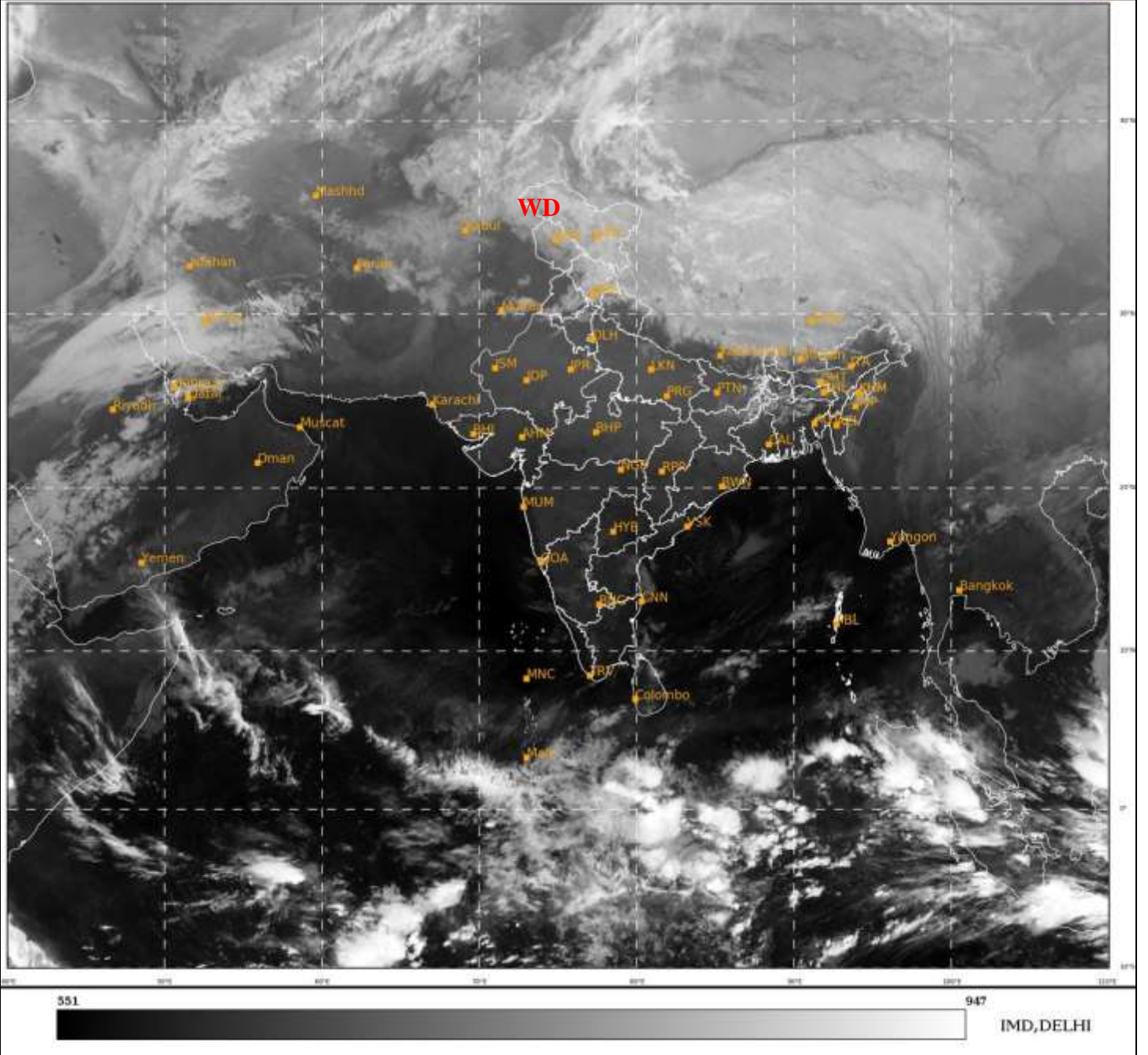




**SATELLITE BULLETIN BASED ON SATELLITE**  
**IMAGERIES AND PRODUCTS**  
**17.01.2022 TIME 2100 UTC**

SAT : INSAT-3D IMG  
IMG\_TIR1 10.8 um  
LIC Mercator

17-01-2022/(2100 to 2126) GMT  
18-01-2022/(0230 to 0256) IST



TCIN50 DEMS 172100

SATELLITE BULLETIN BASED ON INSAT-3D PIC OF 172100 UTC (.)

REGION COVERED BETWEEN LAT 50.0°N TO 30.0°S AND LONG 40.0°E TO 125.0°E (.)

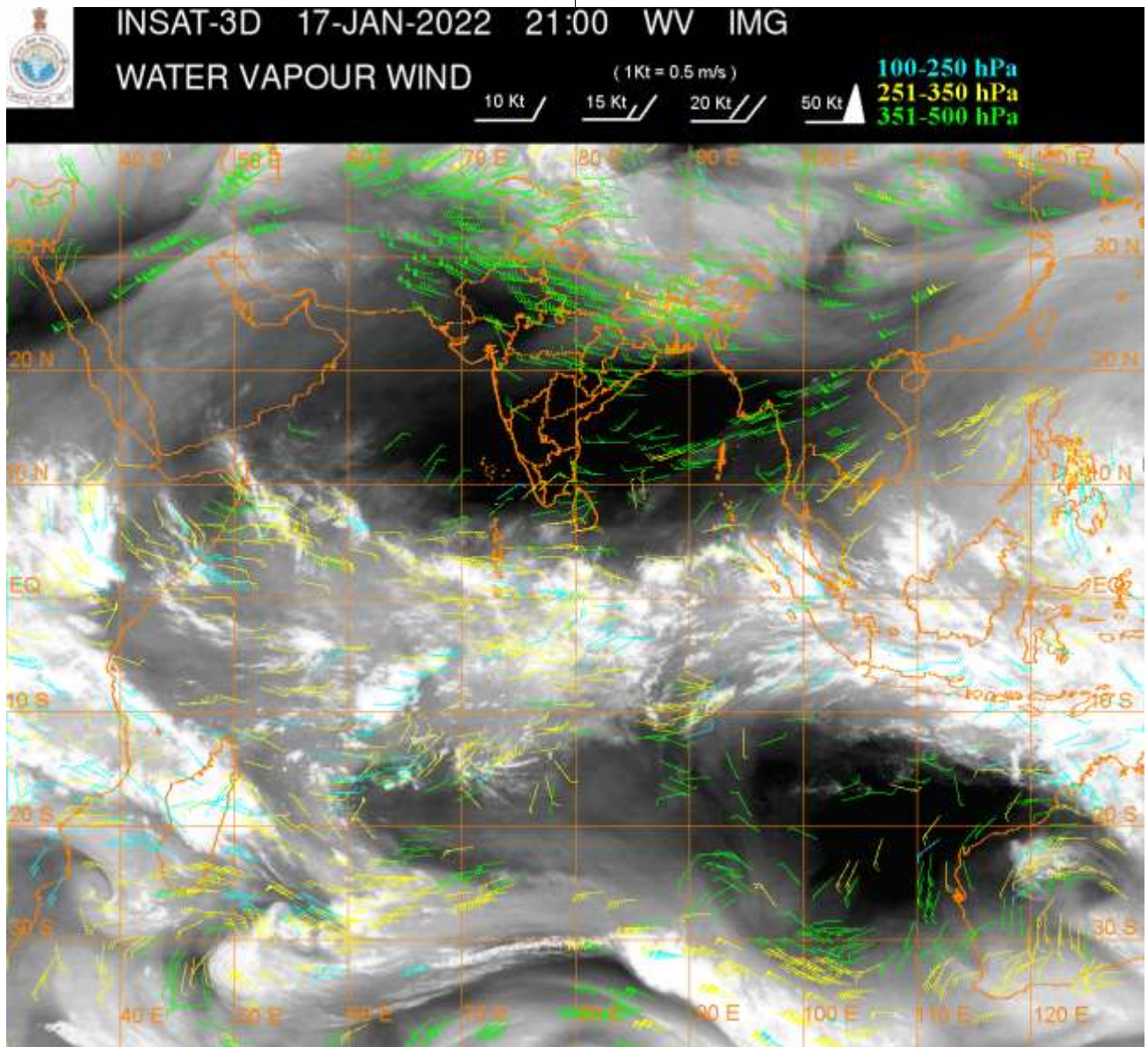
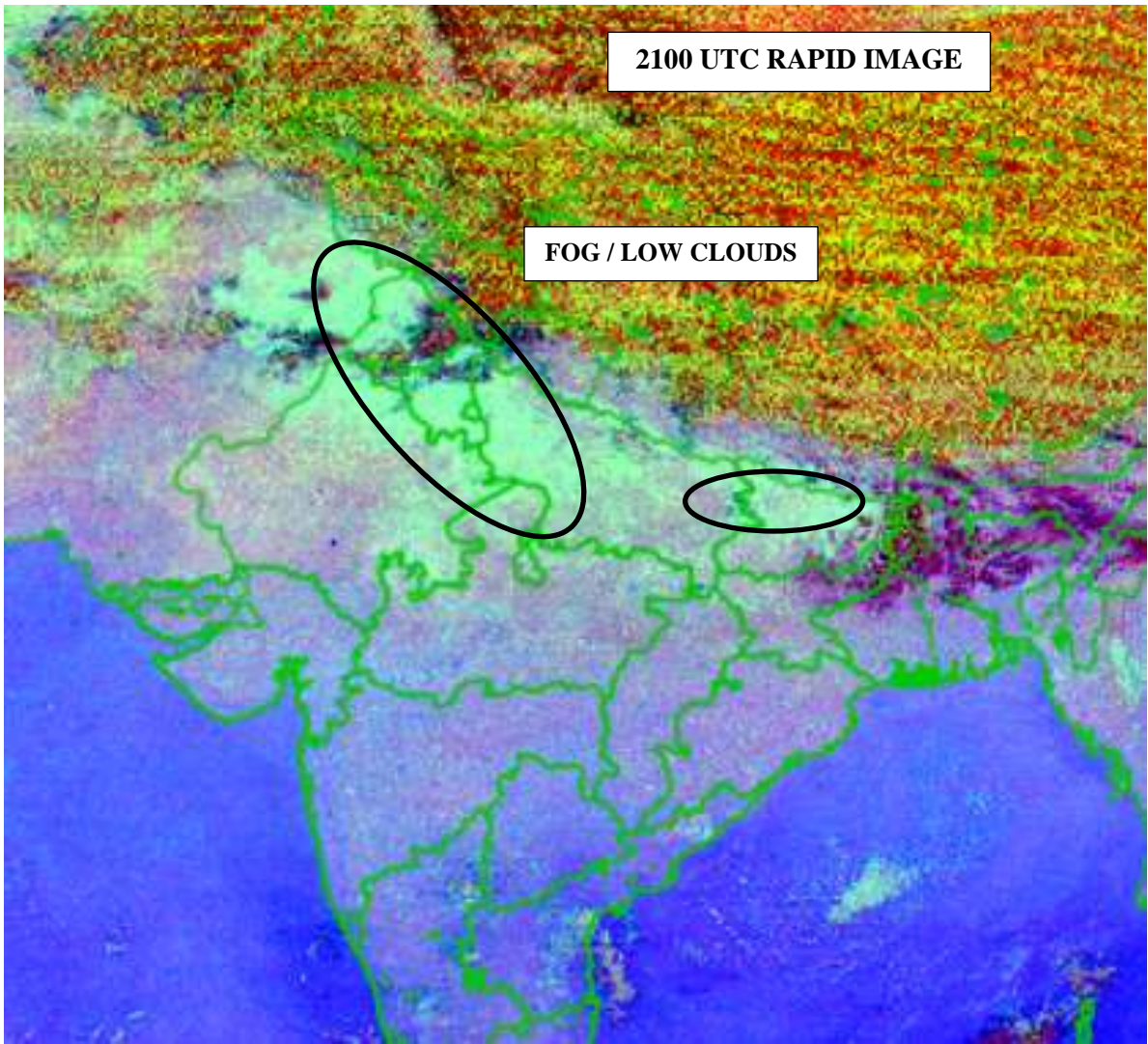
**SALIENT FEATURES:-**

**WESTERN DISTURBANCE (WD):-**

SCT MULTILAYERED CLOUDS OVER E AFGAN N PAK LADAKH J&K HP UTRKND IN ASSW **WD** OVER THE AREA (.)

**FOG /LOW CLOUDS:-**

NIGHT MICROPHYSICS RGB PRODUCT OF INSAT 3D AT 2100 UTC INDICATES SCT TO BKN FOG/ LOW CLOUDS OVER PJB HARY DLH N RAJ UP EXT NW MP N BHR (.)



**CLOUDS DESCRIPTION WITHIN INDIA:-**

**NORTH:-**

SCT LOW/MED CLOUDS WITH EMBDD WK TO MOD CONVTN OVER J&K LADAKH HP N UTRKND E PJB EXT N HARY (.) SCT LOW/MED CLOUDS OVER S UTRKND N UP (.)

**EAST:-**

SCT LOW/MED CLOUDS WITH EMBDD WK TO MOD CONVTN OVER NE BHR SHWB SKM ARUPR N MANI (.) ISOL TO SCT LOW/MED CLOUDS OVER REST NE STATES (.)

**WEST:-**

ISOL TO SCT LOW/MED CLOUDS OVER NE RAJ & GOA (.)

**SOUTH:-**

SCT LOW/MED CLOUDS OVER SW TLNGN N RYLSM S COTL AP KRNTK KER TN ANDAMAN & NICOBAR ILS (.)

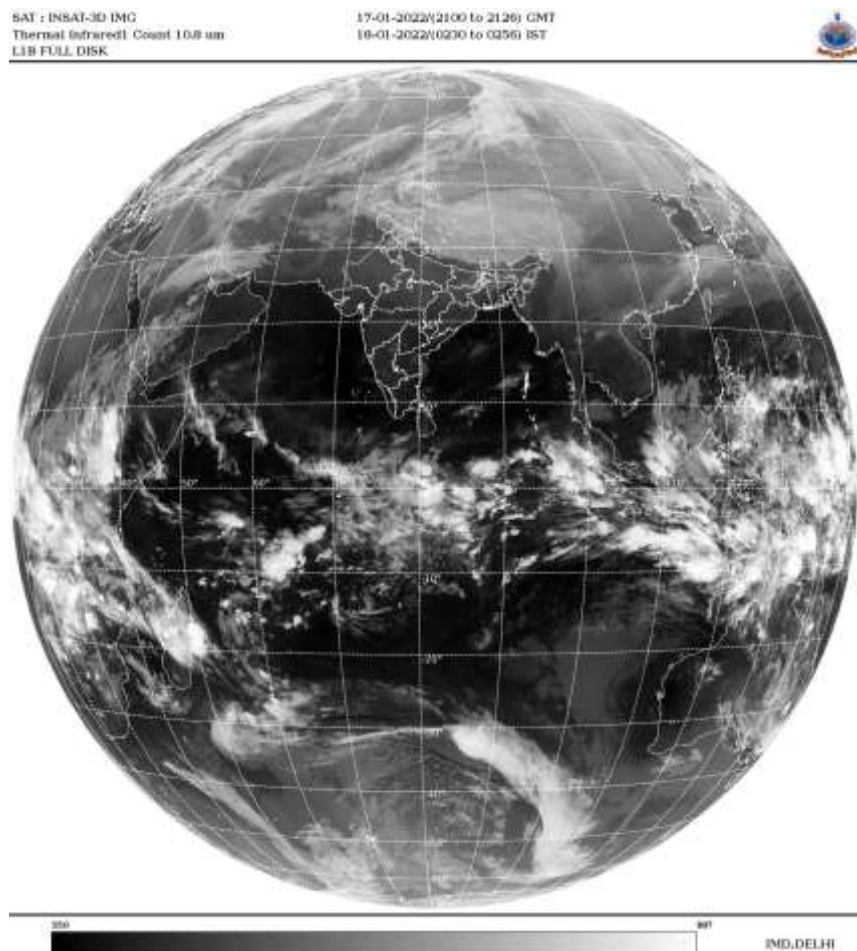
**ARABIAN SEA:-**

SCT LOW/MED CLOUDS WITH EMBDD WK TO MOD CONVTN OVER EXTREME SW ARSEA (.) SCT LOW/MED CLOUDS OVER REST ARSEA (.)

**BAY OF BENGAL & ANDAMAN SEA:-**

SCT LOW/MED CLOUDS WITH EMBDD WK CONVTN OVER SE BAY (.) SCT LOW/MED CLOUDS OVER REST BAY & ANDAMAN SEA (.)

**CLOUDS DESCRIPTION OUTSIDE INDIA:-**



SCT LOW/MED CLOUDS WITH EMBDD MOD TO INT CONVTN OVER N PAK NEPAL TIBET CHINA SUMATRA ADJ W COAST STR OF MALACCA BORNEO ADJ SOUTH CHINA SEA JAVA ILS & SEA CELEBES ILS & SEA SULU SEA PHILIPPINES E CHINA SEA MADAGASCAR MOZAMBIQUE CHANNEL AND OVER INDIAN OCEAN BET LAT 5.0N TO 10.0S LONG 44.0E TO 106.0E AND BET LAT 10.0S TO 30.0S LONG 50.0E TO 80.0E (.)

TOO 18/0430 HRS IST=

**LEGEND:-**

|               |              |  |
|---------------|--------------|--|
| <b>REGION</b> | <b>NORTH</b> | <b>J&amp;K HP PJB HARY DLH UP UTRKND</b>                         |
|               | <b>EAST</b>  | <b>BHR JHRKND CHTGH ORS WB SKM<br/>NORTH- EAST STATES</b>        |
|               | <b>WEST</b>  | <b>RAJ MP GUJ MAHA GOA</b>                                       |
|               | <b>SOUTH</b> | <b>TLNGN AP KRNTK KER TN LKSDP<br/>ANDAMAN &amp; NICOBAR ILS</b> |

|   |                       |   |
|---|-----------------------|---|
| <b>CLOUD DISTRIBUTION</b>   | <b>ISOL</b>           | <b>ISOLATED (LESS THAN 25%)</b>                             |
|   | <b>SCT</b>            | <b>SCATTERED (25 TO 50%)</b>                                |
|   | <b>BKN</b>            | <b>BROKEN (51 TO 75%)</b>                                   |
|   | <b>SLD</b>            | <b>SOLID (GREATER THAN 75%)</b>                             |
| <b>CLOUDS TOP TEMPERATURE</b>                                       | <b>CTT</b>            | <b>CLOUD TOP TEMPERATURE</b>                                |
| <b>CONVECTION</b>   | <b>WK CONVTN</b>      | <b>WEAK CONVECTION<br/>(CTT GREATER THAN -25°C)</b>         |
|   | <b>MOD CONVTN</b>     | <b>MODERATE CONVECTION<br/>(CTT BETWEEN -25°C TO -40°C)</b> |
|   | <b>INT CONVTN</b>     | <b>INTENSE CONVECTION<br/>(CTT BETWEEN -41°C TO -70°C)</b>  |
|   | <b>V INT CONVTN</b>   | <b>VERY INTENSE CONVECTION<br/>(CTT LESS THAN -70°C)</b>    |
| <b>METEOROLOGICAL SUB-DIVISIONS, STATES &amp; UNION TERRITORIES</b> | <b>ARUPR</b>          | <b>ARUNACHAL PRADESH</b>                                    |
|   | <b>BHR</b>            | <b>BIHAR</b>  |
|   | <b>CHTGH</b>          | <b>CHHATTISGARH</b>   |
|   | <b>COTL AP</b>        | <b>COASTAL ANDHRA PRADESH</b>                               |
|   | <b>COTL KRNTK</b>     | <b>COASTAL KARNATAKA</b>                                    |
|   | <b>COTL ORS</b>       | <b>COASTAL ORISSA</b>                                       |
|   | <b>GUJ</b>            | <b>GUJARAT</b>  |
|   | <b>GWB</b>            | <b>GANGETIC WEST BENGAL</b>                                 |
|   | <b>HARY</b>           | <b>HARYANA</b>  |
|   | <b>DLH</b>            | <b>DELHI</b>  |
|   | <b>HP</b>             | <b>HIMACHAL PRADESH</b>                                     |
|   | <b>J&amp;K</b>        | <b>JAMMU AND KASHMIR</b>                                    |
|   | <b>JHRKND</b>         | <b>JHARKHAND</b>  |
|   | <b>KER</b>            | <b>KERALA</b>   |
|   | <b>KKN</b>            | <b>KONKAN</b>   |
|   | <b>LKSDP</b>          | <b>LAKSHADWEEP</b>  |
|   | <b>M MAHA</b>         | <b>MADHYA MAHARASHTRA</b>                                   |
|   | <b>MAHA</b>           | <b>MAHARASHTRA</b>  |
|   | <b>MANI</b>           | <b>MANIPUR</b>  |
|   | <b>MEGHA</b>          | <b>MEGHALAYA</b>  |
| <b>MIZO</b>   | <b>MIZORAM</b>        |   |
| <b>MP</b>   | <b>MADHYA PRADESH</b> |   |

|                      |                        |                                     |
|----------------------|------------------------|-------------------------------------|
|                      | <b>MRTHWD</b>          | <b>MARATHWADA</b>                   |
|                      | <b>NAGA</b>            | <b>NAGALAND</b>                     |
|                      | <b>N COTL AP</b>       | <b>NORTH COASTAL ANDHRA PRADESH</b> |
|                      | <b>NIK</b>             | <b>NORTH INTERIOR KARNATAKA</b>     |
|                      | <b>ORS</b>             | <b>ORISSA</b>                       |
|                      | <b>PJB</b>             | <b>PUNJAB</b>                       |
|                      | <b>RAJ</b>             | <b>RAJASTHAN</b>                    |
|                      | <b>RYLSM</b>           | <b>RAYALASEEMA</b>                  |
|                      | <b>SAU &amp; KUTCH</b> | <b>SAURASHTRA &amp; KUTCH</b>       |
|                      | <b>SHWB</b>            | <b>SUB-HIMALAYAN WEST BENGAL</b>    |
|                      | <b>SIK</b>             | <b>SOUTH INTERIOR KARNATAKA</b>     |
|                      | <b>SKM</b>             | <b>SIKKIM</b>                       |
|                      | <b>TLNGN</b>           | <b>TELANGANA</b>                    |
|                      | <b>TN</b>              | <b>TAMIL NADU</b>                   |
|                      | <b>TRP</b>             | <b>TRIPURA</b>                      |
|                      | <b>UP</b>              | <b>UTTAR PRADESH</b>                |
|                      | <b>UTRKN</b>           | <b>UTTARAKHAND</b>                  |
|                      | <b>VID</b>             | <b>VIDHARBHA</b>                    |
|                      | <b>SHWB</b>            | <b>SUB HIMALAYAN WEST BENGAL</b>    |
|                      | <b>GWB</b>             | <b>GANGETIC WEST BENGAL</b>         |
|                      | <b>ARSEA</b>           | <b>ARABIAN SEA</b>                  |
|                      | <b>ILS</b>             | <b>ISLANDS</b>                      |
| <b>MISCELLANEOUS</b> | <b>ASSW</b>            | <b>IN ASSOCIATION WITH</b>          |
|                      | <b>ASSTD</b>           | <b>ASSOCIATED</b>                   |
|                      | <b>LLC</b>             | <b>LOW LEVEL CIRCULATION</b>        |
|                      | <b>EMBDD</b>           | <b>EMBEDDED</b>                     |
|                      | <b>N/HOOD</b>          | <b>NEIGHBOURHOOD</b>                |
|                      | <b>EXT</b>             | <b>EXTREME</b>                      |