

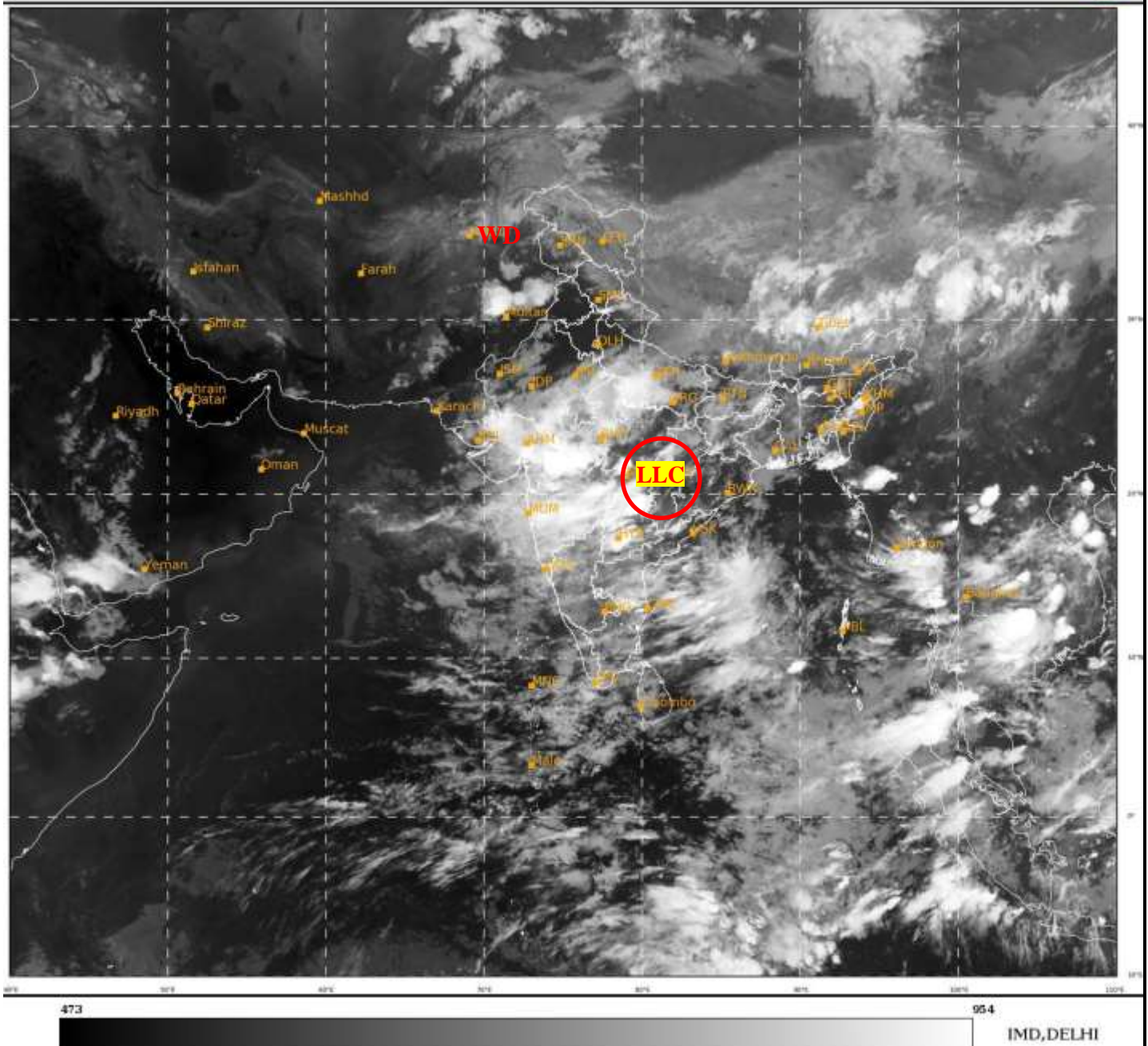


**SATELLITE BULLETIN BASED ON SATELLITE
IMAGERIES AND PRODUCTS**

30.08.2021 TIME 1800 UTC

SAT : INSAT-3D IMG
IMG_TIR1 10.8 um
LIC Mercator

30-08-2021/(1700 to 1726) GMT
30-08-2021/(2230 to 2256) IST



TCIN50 DEMS 301800

SATELLITE BULLETIN BASED ON INSAT-3D PIC OF 301700 UTC (.)

REGION COVERED BETWEEN LAT 50.0°N TO 30.0°S AND LONG 40.0°E TO 125.0°E (.)

SALIENT FEATURES:-

LLC OVER EXTREME SOUTH CHHATTISGARH & N/HOOD:-

LLC OVER EXTREME S CHTGH & N/HOOD (.) ASSTD SCT LOW/MED CLOUDS WITH EMBDD INT TO V INT CONVTN OVER NW CHTGH E VID ADJ N TLNGN (.)

WESTERN DISTURBANCE (WD):-

SCT MULTILAYERED CLOUDS OVER EXTREME NE PAK LADAKH AND N/HOOD IN ASSW **WD** OVER THE AREA (.)



INSAT-3D 30-AUG-2021 17:00 WV IMG

WATER VAPOUR WIND

(1Kt = 0.5 m/s)

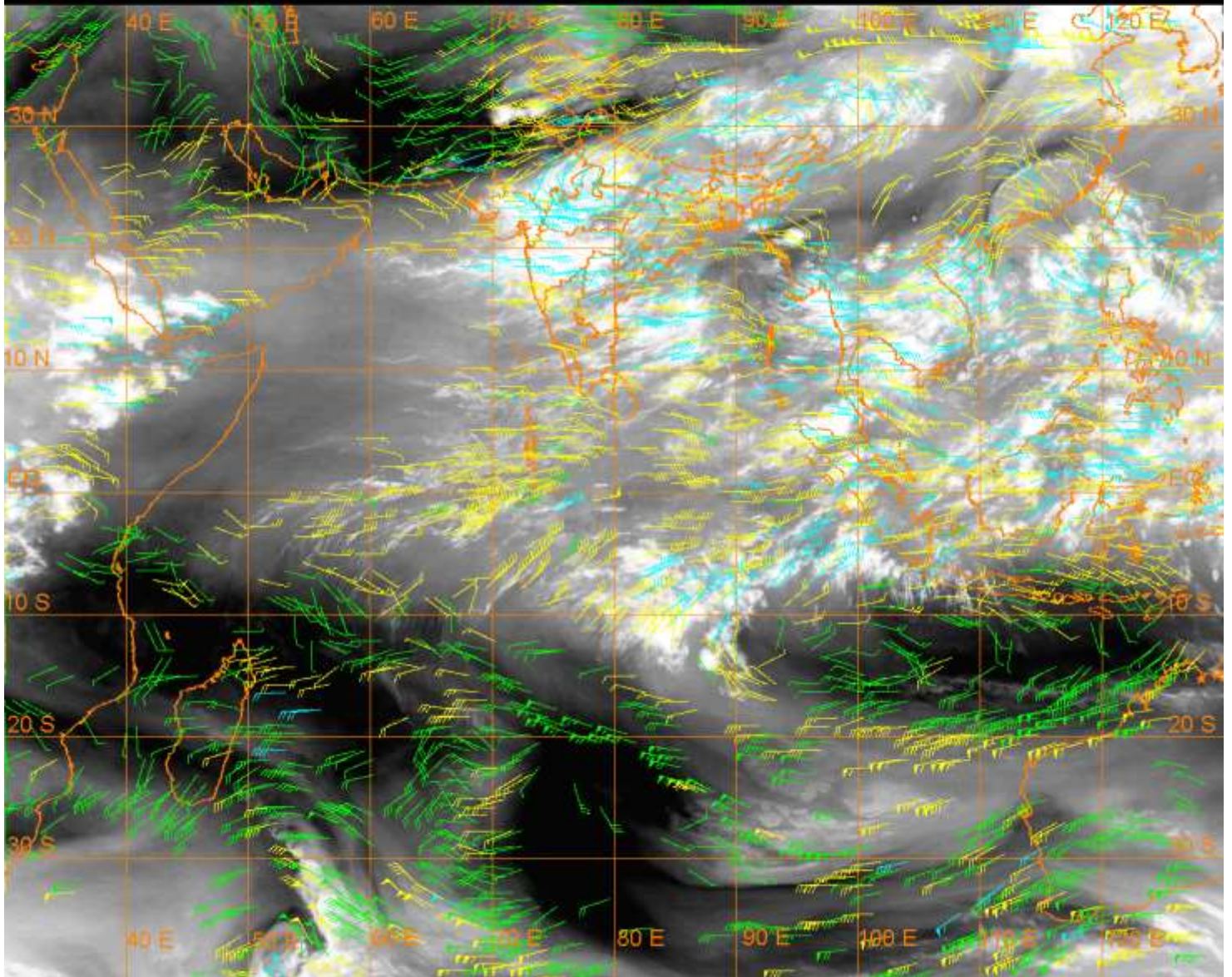
100-250 hPa
251-350 hPa
351-500 hPa

10 Kt

15 Kt

20 Kt

50 Kt



CLOUDS DESCRIPTION WITHIN INDIA:-

NORTH:-

SCT LOW/MED CLOUDS WITH EMBDD INT TO V INT CONVTN OVER EXT SC PARTS OF UP (.)
SCT LOW/MED CLOUDS WITH EMBDD MOD TO INT CONVTN OVER EXT S HP EXT NW UTRKND
SW UP (.) SCT LOW/MED CLOUDS WITH EMBDD WK CONVTN OVER LADAKH J&K REST HP N
UTRKND EXT SE HARY REST UP (.) SCT LOW/MED CLOUDS OVER N PJB S UTRKND (.)

EAST:-

SCT LOW/MED CLOUDS WITH EMBDD INT TO V INT CONVTN OVER EXT S NAGA ADJ EXT N MANI
EXT S MIZO (.) SCT LOW/MED CLOUDS WITH EMBDD MOD TO INT CONVTN OVER SE BHR SW
& NE JHRKND NW CHTGH EXT S ORS N GWB EXT SW & C ASSAM ADJ EXT NW MEGHA N ARUPR
W MANI TRP N MIZO (.) SCT LOW/MED CLOUDS WITH EMBDD WK CONVTN OVER REST BHR
REST JHRKND REST CHTGH REST ORS REST GWB SHWB REST ARUPR SKM REST ARUPR REST
NAGA AND SCT LOW/MED CLOUDS OVER REST PARTS OF THE REGION(.)

WEST:-

SCT LOW/MED CLOUDS WITH EMBDD INT TO V INT CONVTN OVER S RAJ W & SC MP NE GUJ
MAHA (.) SCT LOW/MED CLOUDS WITH EMBDD MOD TO INT CONVTN OVER EXT S GUJ GOA
(.) SCT LOW/MED CLOUDS WITH EMBDD ISOL WK TO MOD CONVTN OVER W RAJ REST MP
REST GUJ (.)

SOUTH:-

SCT LOW/MED CLOUDS WITH EMBDD INT TO V INT CONVTN OVER TLNGN EXT S AP (.) SCT
LOW/MED CLOUDS WITH EMBDD MOD TO INT CONVTN OVER S AP NIK AND WK TO MOD
CONVTN OVER REST PARTS OF THE REGION (.)

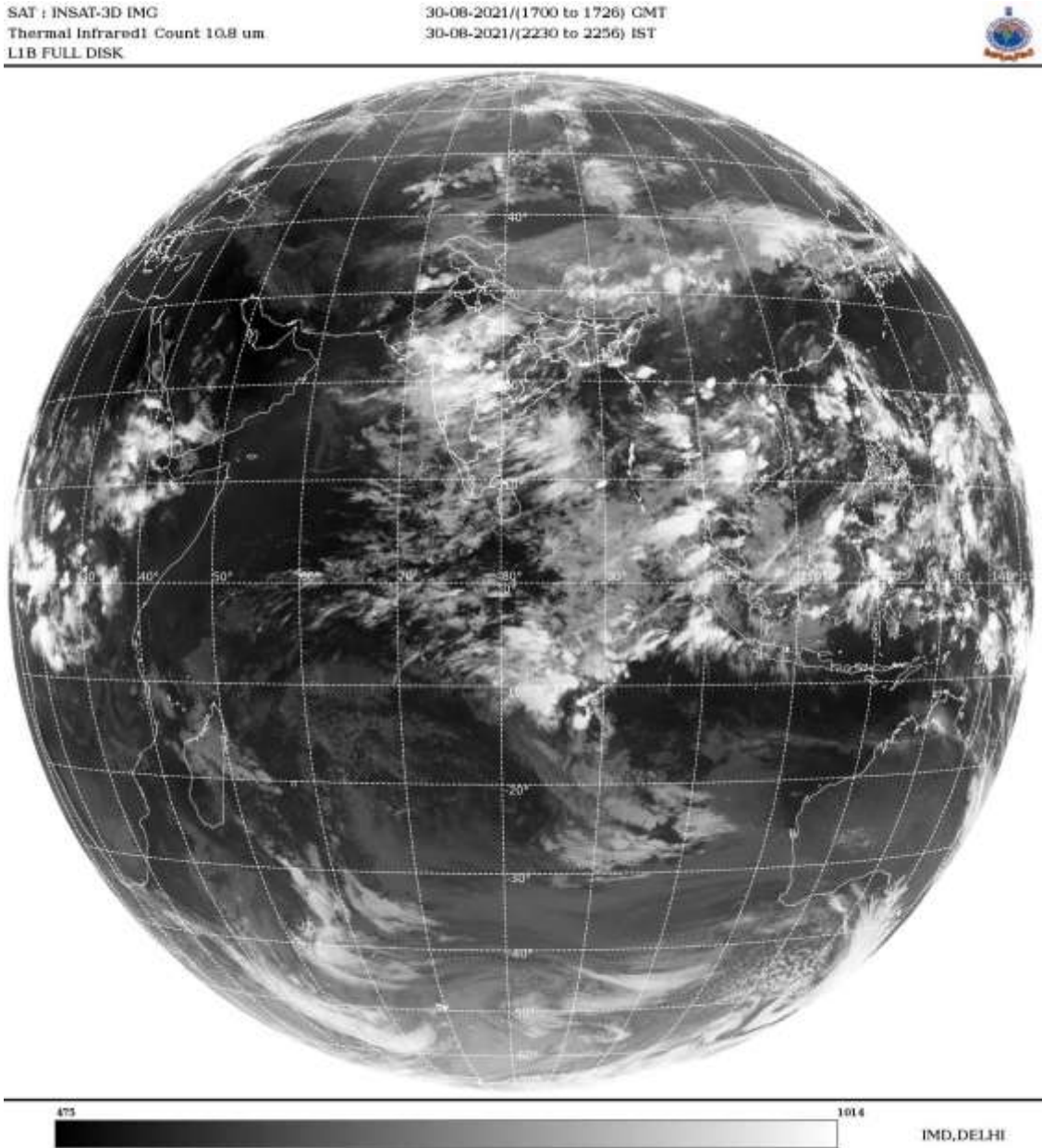
ARABIAN SEA:-

SCT LOW/MED CLOUDS WITH EMBDD MOD TO INT CONVTN OVER E ARSEA OFF MAHA-KRNTK-KER COT EAST OF LONG 67.5E AND GULF OF CAMBAY AND COMORIN (.)

BAY OF BENGAL & ANDAMAN SEA:-

SCT LOW/MED CLOUDS WITH EMBDD INT TO V INT CONVTN OVER EXT NE BAY SW ADJ SE BAY S ARAKAN COT & N TENASSERIM COT (.) SCT TO BKN LOW/MED CLOUDS WITH EMBDD WK TO MOD CONVTN OVER REST BAY & ANDAMAN SEA (.)

CLOUDS DESCRIPTION OUTSIDE INDIA:-



SCT LOW/MED CLOUDS WITH EMBDD MOD TO INT CONVTN OVER SRI LANKA MALDIVES PAK NEPAL TIBET CHINA YELLOW SEA TAIWAN S MYANMAR HAINAN GULF OF TONKIN THAILAND GULF OF THAILAND CAMBODIA LAOS VIETNAM SUMATRA STR OF MALACCA MALAY PENINSULA BORNEO S CHINA SEA JAVA ILS & SEA CELEBES ILS & SEA PHILIPPINES SULU SEA AND INDIAN OCEAN BET LAT 50N TO 14.0S 60.0E TO109.0E (.)

TOO 30/2350F=

NNNN

LEGEND:-

REGION	NORTH	J&K HP PJB HARY DLH UP UTRKND
	EAST	BHR JHRKND CHTGH ORS WB SKMNORTH- EAST STATES
	WEST	RAJ MP GUJ MAHA GOA
	SOUTH	TLNGN AP KRNTK KER TN LKSDP ANDAMAN & NICOBAR ILS

CLOUD DISTRIBUTION	ISOL	ISOLATED (LESS THAN 25%)
	SCT	SCATTERED (25 TO 50%)
	BKN	BROKEN (51 TO 75%)
	SLD	SOLID (GREATER THAN 75%)
CLOUDS TOP TEMPERATURE	CTT	CLOUD TOP TEMPERATURE
CONVECTION	WK CONVTN	WEAK CONVECTION (CTT GREATER THAN -25°C)
	MOD CONVTN	MODERATE CONVECTION (CTT BETWEEN -25°C TO -40°C)
	INT CONVTN	INTENSE CONVECTION (CTT BETWEEN -41°C TO -70°C)
	V INT CONVTN	VERY INTENSE CONVECTION (CTT LESS THAN -70°C)
METEOROLOGICAL SUB-DIVISIONS, STATES & UNION TERRITORIES	ARUPR	ARUNACHAL PRADESH
	BHR	BIHAR
	CHTGH	CHHATTISGARH
	COTL AP	COASTAL ANDHRA PRADESH
	COTL KRNTK	COASTAL KARNATAKA
	COTL ORS	COASTAL ORISSA
	GUJ	GUJARAT
	GWB	GANGETIC WEST BENGAL
	HARY	HARYANA
	DLH	DELHI
	HP	HIMACHAL PRADESH
	J&K	JAMMU AND KASHMIR
	JHRKND	JHARKHAND
	KER	KERALA
	KKN	KONKAN
	LKSDP	LAKSHADWEEP
	M MAHA	MADHYA MAHARASHTRA
	MAHA	MAHARASHTRA
	MANI	MANIPUR
	MEGHA	MEGHALAYA
	MIZO	MIZORAM
MP	MADHYA PRADESH	
	MRTHWD	MARATHWADA
	NAGA	NAGALAND
	N COTL AP	NORTH COASTAL ANDHRA PRADESH

	NIK	NORTH INTERIOR KARNATAKA
	ORS	ORISSA
	PJB	PUNJAB
	RAJ	RAJASTHAN
	RYLSM	RAYALASEEMA
	SAU & KUTCH	SAURASHTRA & KUTCH
	SHWB	SUB-HIMALAYAN WEST BENGAL
	SIK	SOUTH INTERIOR KARNATAKA
	SKM	SIKKIM
	TLNGN	TELANGANA
	TN	TAMIL NADU
	TRP	TRIPURA
	UP	UTTAR PRADESH
	UTRKN	UTTARAKHAND
	VID	VIDHARBHA
	SHWB	SUB HIMALAYAN WEST BENGAL
	GWB	GANGETIC WEST BENGAL
	ARSEA	ARABIAN SEA
	ILS	ISLANDS
MISCELLANEOUS	ASSW	IN ASSOCIATION WITH
	ASSTD	ASSOCIATED
	LLC	LOW LEVEL CIRCULATION
	EMBDD	EMBEDDED
	N/HOOD	NEIGHBOURHOOD
	EXT	EXTREME