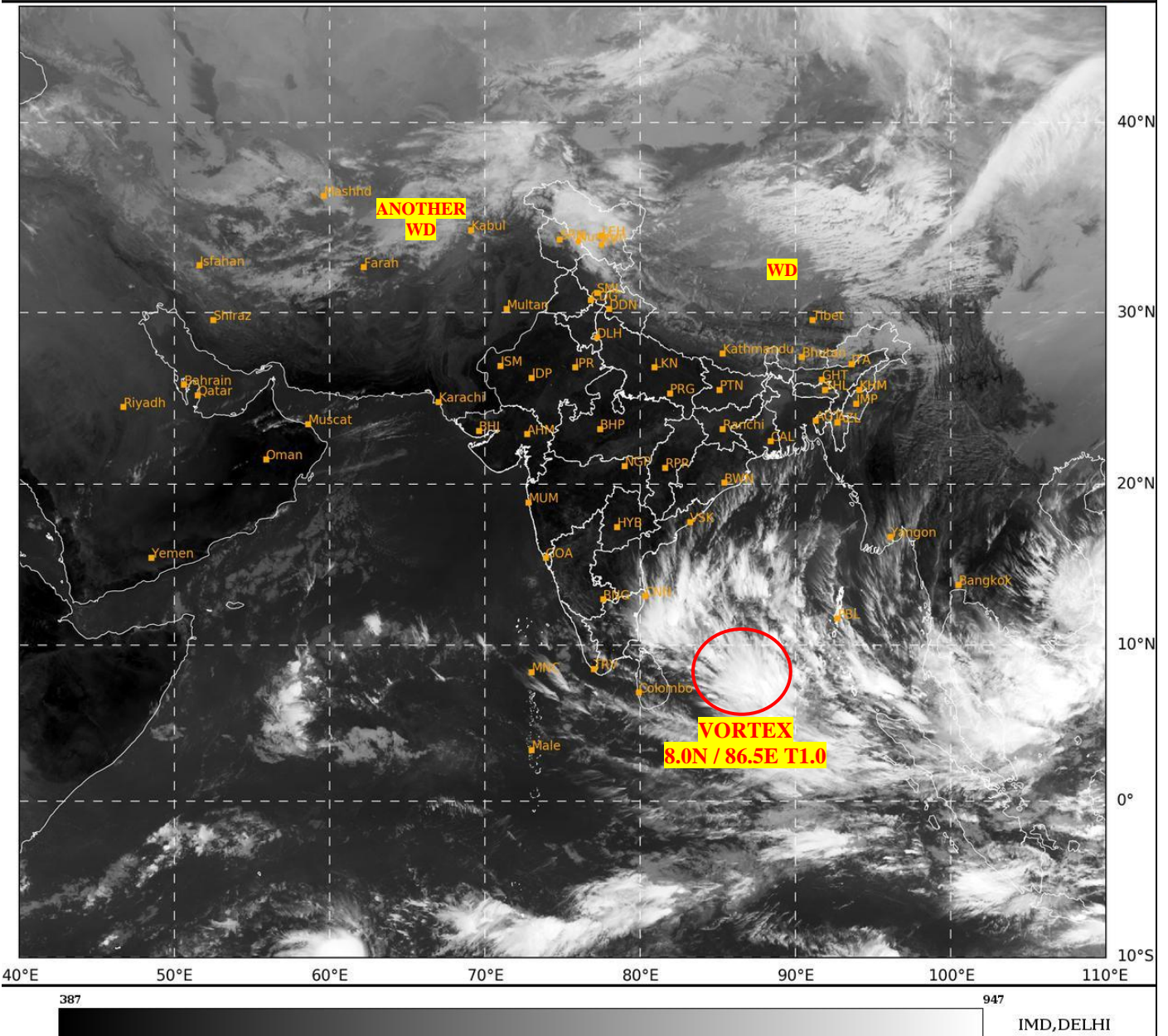




**SATELLITE BULLETIN BASED ON SATELLITE
IMAGERIES AND PRODUCTS**
10.12.2024 TIME 0600 UTC

SAT : INSAT-3DR IMG
IMG_TIR1 10.8 um
LIC Mercator

10-12-2024/(0615 to 0642) GMT
10-12-2024/(1145 to 1212) IST



TCIN50 DEMS 100600

SATELLITE BULLETIN BASED ON INSAT-3DR PIC OF 100615 UTC (.)

REGION COVERED BETWEEN LAT 50.0°N TO 35.0°S AND LONG 40.0°E TO 125.0°E (.)

SALIENT FEATURES:-

VORTEX OVER CENTRAL PARTS OF SOUTH BAY:-

VORTEX OVER CENTRAL PARTS OF SOUTH BAY CENTERED **WITHIN HALF A DEGREE OF 8.0N / 86.5E** (.) INTENSITY **T1.0** (.) ASSTD SCT TO BKN LOW/MED CLOUDS WITH EMBDD INT TO V INT CONVTN OVER CENTRAL BAY SOUTH BAY ADJ EQUATORIAL INDIAN OCEAN BET LAT 3.0N TO 15.0N AND LONG 80.0E TO 93.0E (.) MINIMUM **CTT MINUS 75-85 DEG CEL** (.)

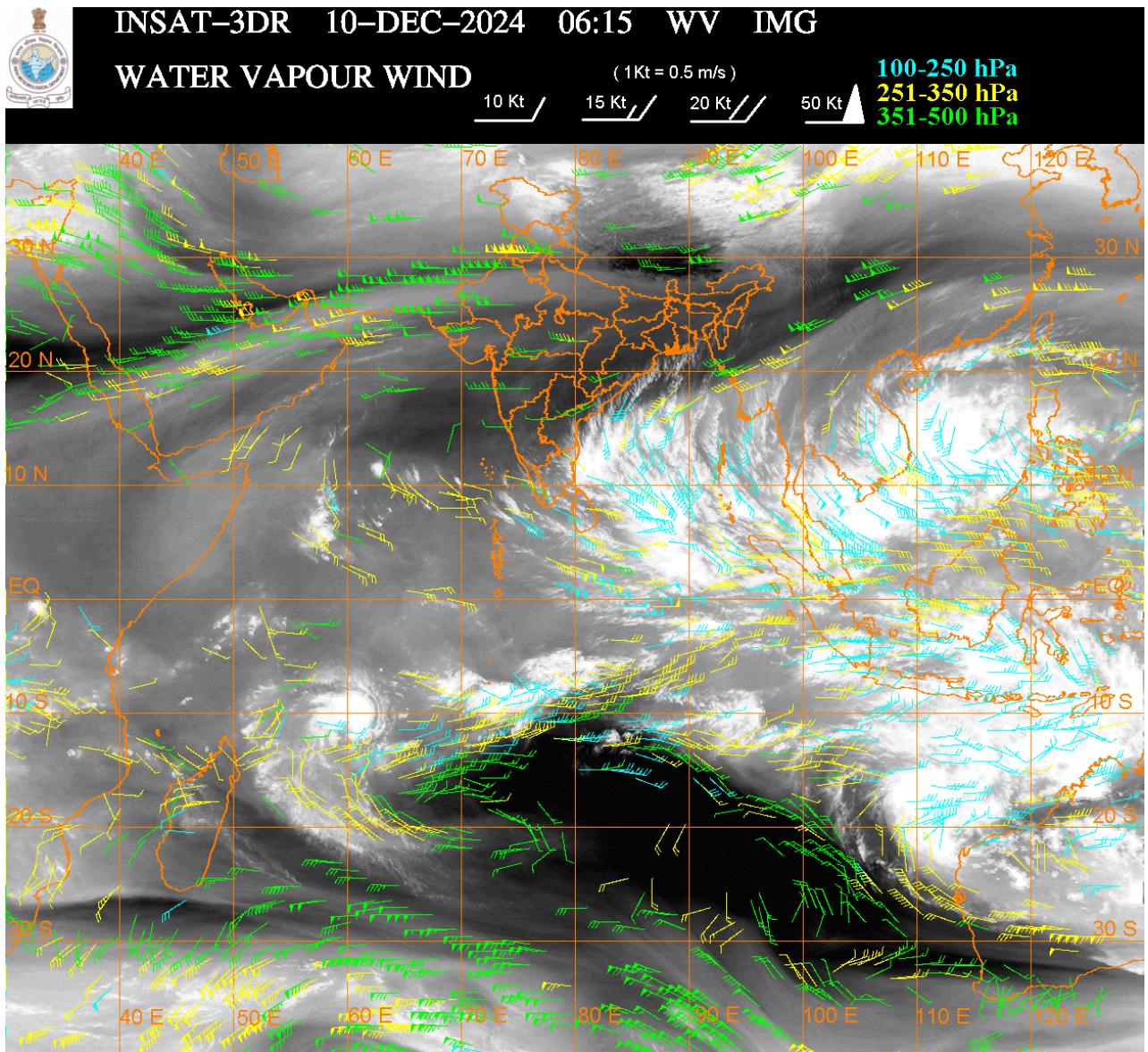
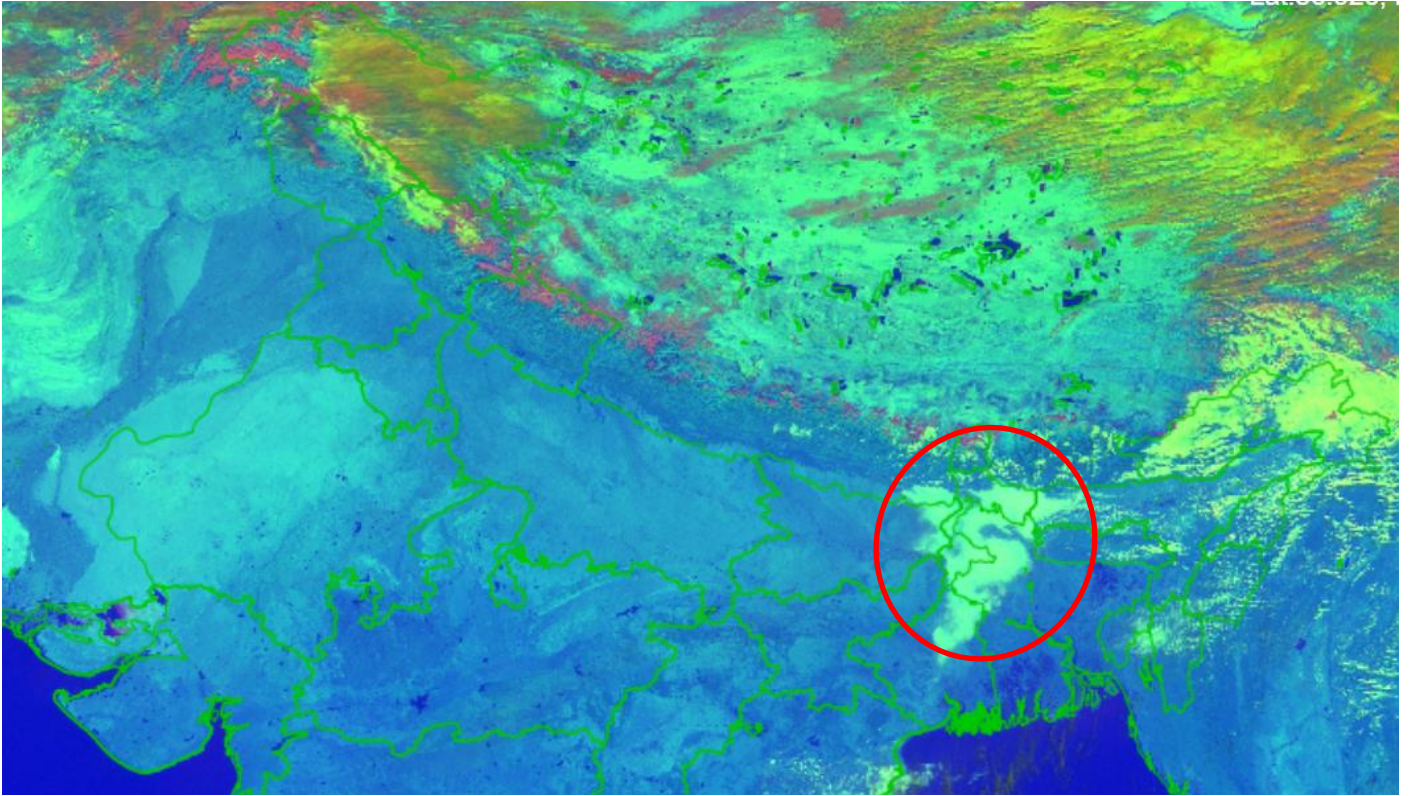
WESTERN DISTURBANCE:-

SCT MULTILAYERED CLOUDS OVER TIBET ADJ CHINA IN ASSW **WD** OVER THE AREA (.)

SCT MULTILAYERED CLOUDS OVER AFGAN EXT N PAK J&K LADAKH N HP AND N/HOOD IN ASSW **ANOTHER WD** OVER THE AREA (.)

FOG / LOW CLOUDS:-

RGB COMPOSITE DAY MICROPHYSICS IMAGERY OF INSAT 3DR (RAPID) AT 0615 UTC SHOWS SCT FOG / LOW CLOUDS OVER NE BHR ADJ NEPAL SHWB W ASSAM NE GWB & NW BD (.)



CLOUDS DESCRIPTION WITHIN INDIA:-

NORTH:-

SCT LOW/MED CLOUDS WITH EMBDD MOD TO INT CONVTN OVER LADAKH AND ISOL WK TO MOD CONVTN OVER J&K N HP N UTRKND (.) ISOL LOW/MED CLOUDS OVER S HP S UTRKND (.)

EAST:-

SCT LOW/MED CLOUDS WITH EMBDD ISOL WK CONV TN OVER E ORS SKM ARUPR E ASSAM
(.) SCT LOW/MED CLOUDS OVER REST NE STATES (.)

WEST:-

SCT LOW/MED CLOUDS OVER W MRTHWD SOUTH MADHYA MAHA GOA (.)

SOUTH:-

SCT LOW/MED CLOUDS WITH EMBDD MOD TO INT CONV TN OVER ANDAMAN & NICOBAR
ILS LKSDP ILS AREA (.) SCT LOW/MED CLOUDS WITH EMBDD ISOL WK TO MOD CONV TN
OVER COTL AP KER TN (.) SCT LOW/MED CLOUDS OVER KRNTK TLNGN RYLSM (.)

ARABIAN SEA:-

SCT LOW/MED CLOUDS WITH EMBDD MOD TO INT CONV TN OVER SOUTH ARSEA LKSDP ILS
AREA MALDIVES & COMORIN AREA (.) SCT LOW/MED CLOUDS WITH EMBDD ISOL WK TO
MOD CONV TN OVER NW & WC ARSEA (.)

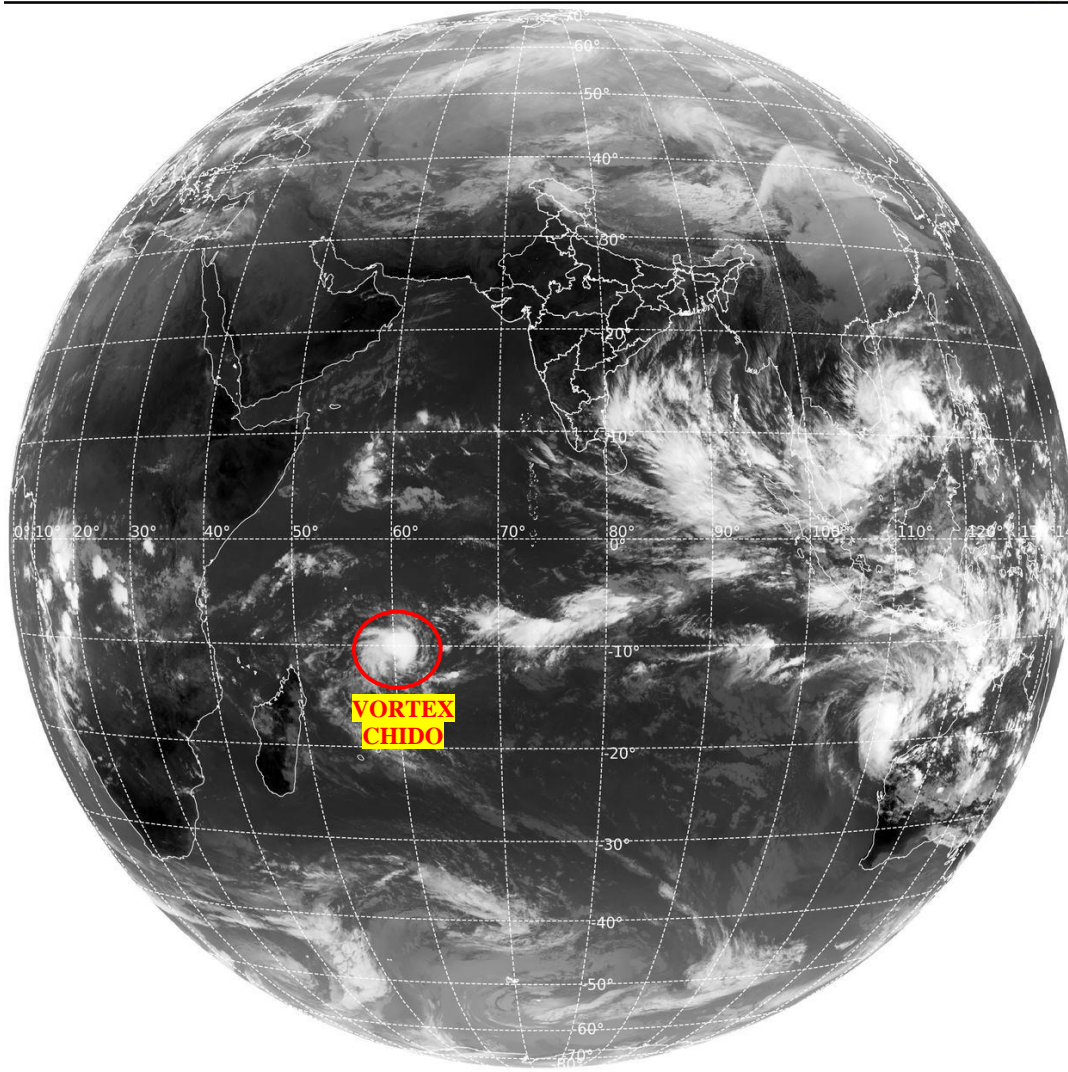
BAY OF BENGAL & ANDAMAN SEA:-

SCT LOW/MED CLOUDS WITH EMBDD INT TO V INT CONV TN OVER CENTRAL & SOUTH BAY
AND SOUTH ANDAMAN SEA (.) SCT LOW/MED CLOUDS WITH EMBDD MOD TO INT CONV TN
OVER NORTH ANDAMAN SEA TENASSERIM COAST AND ISOL WK TO MOD CONV TN OVER
NORTH BAY (.)

CLOUDS DESCRIPTION OUTSIDE INDIA:-

SAT : INSAT-3DR IMG
Thermal Infrared1 Count 10.8 um
L1B FULL DISK

10-12-2024/(0615 to 0642) GMT
10-12-2024/(1145 to 1212) IST



VORTEX (CHIDO) OVER SOUTH INDIAN OCEAN:-

VORTEX (CHIDO) OVER SOUTH INDIAN OCEAN (AREA **D40 ADJ D35 & E60**) CENTERED NEAR
10.6S / 60.9E (.) INTENSITY **T3.0/3.0** (.) MAXIMUM SUSTAINED WINDS OF **34-47 KTS** (.) ASSTD
SCT TO BKN LOW/MED CLOUDS WITH EMBDD INT TO V INT CONV TN OVER AREA BET LAT
8.0S TO 13.0S LONG 56.0E TO 63.0E (.)

SCT LOW/MED CLOUDS WITH EMBDD MOD TO INT CONVTN OVER SRI LANKA PALK STR GULF OF MANNAR MALDIVES TIBET CHINA YELLOW SEA MYANMAR THAILAND GULF OF THAILAND CAMBODIA LAOS VIETNAM GULF OF TONKIN HAINAN SUMATRA STR OF MALACCA MALAYSIA BORNEO SOUTH CHINA SEA JAVA ILS & SEA CELEBES ILS & SEA PHILIPPINES SULU SEA NORTH MADAGASCAR NORTH MOZAMBIQUE CHANNEL AND OVER INDIAN OCEAN BET LAT 5.0N TO 20.0S LONG 40.0E TO 120.0E (.)

TOO 10/1240 EF=

NNNN

LEGEND:-

REGION	NORTH	J&K HP PJB HARY DLH UP UTRKND
	EAST	BHR JHRKND CHTGH ORS WB SKM NORTH- EAST STATES
	WEST	RAJ MP GUJ MAHA GOA
	SOUTH	TLNGN AP KRNTK KER TN LKSDP ANDAMAN & NICOBAR ILS
CLOUD DISTRIBUTION	ISOL	ISOLATED (LESS THAN 25%)
	SCT	SCATTERED (25 TO 50%)
	BKN	BROKEN (51 TO 75%)
	SLD	SOLID (GREATER THAN 75%)
CLOUDS TOP TEMPERATURE	CTT	CLOUD TOP TEMPERATURE
CONVECTION	WK CONVTN	WEAK CONVECTION (CTT GREATER THAN -25°C)
	MOD CONVTN	MODERATE CONVECTION (CTT BETWEEN -25°C TO -40°C)
	INT CONVTN	INTENSE CONVECTION (CTT BETWEEN -41°C TO -70°C)
	V INT CONVTN	VERY INTENSE CONVECTION (CTT LESS THAN -70°C)
METEOROLOGICAL SUB- DIVISIONS, STATES & UNION TERRITORIES	ARUPR	ARUNACHAL PRADESH
	BHR	BIHAR
	CHTGH	CHHATTISGARH
	COTL AP	COASTAL ANDHRA PRADESH
	COTL KRNTK	COASTAL KARNATAKA
	COTL ORS	COASTAL ORISSA
	GUJ	GUJARAT
	GWB	GANGETIC WEST BENGAL
	HARY	HARYANA
	DLH	DELHI
	HP	HIMACHAL PRADESH
	J&K	JAMMU AND KASHMIR
	JHRKND	JHARKHAND
	KER	KERALA
	KKN	KONKAN
	LKSDP	LAKSHADWEEP
M MAHA	MADHYA MAHARASHTRA	

	MAHA	MAHARASHTRA
	MANI	MANIPUR
	MEGHA	MEGHALAYA
	MIZO	MIZORAM
	MP	MADHYA PRADESH
	MRTHWD	MARATHWADA
	NAGA	NAGALAND
	N COTL AP	NORTH COASTAL ANDHRA PRADESH
	NIK	NORTH INTERIOR KARNATAKA
	ORS	ORISSA
	PJB	PUNJAB
	RAJ	RAJASTHAN
	RYLSM	RAYALASEEMA
	SAU & KUTCH	SAURASHTRA & KUTCH
	SHWB	SUB-HIMALAYAN WEST BENGAL
	SIK	SOUTH INTERIOR KARNATAKA
	SKM	SIKKIM
	TLNGN	TELANGANA
	TN	TAMIL NADU
	TRP	TRIPURA
	UP	UTTAR PRADESH
	UTRKND	UTTARAKHAND
	VID	VIDHARBHA
	SHWB	SUB HIMALAYAN WEST BENGAL
	GWB	GANGETIC WEST BENGAL
	ARSEA	ARABIAN SEA
	ILS	ISLANDS
MISCELLANEOUS	ASSW	IN ASSOCIATION WITH
	ASSTD	ASSOCIATED
	LLC	LOW LEVEL CIRCULATION
	EMBDD	EMBEDDED
	N/HOOD	NEIGHBOURHOOD
	EXT	EXTREME