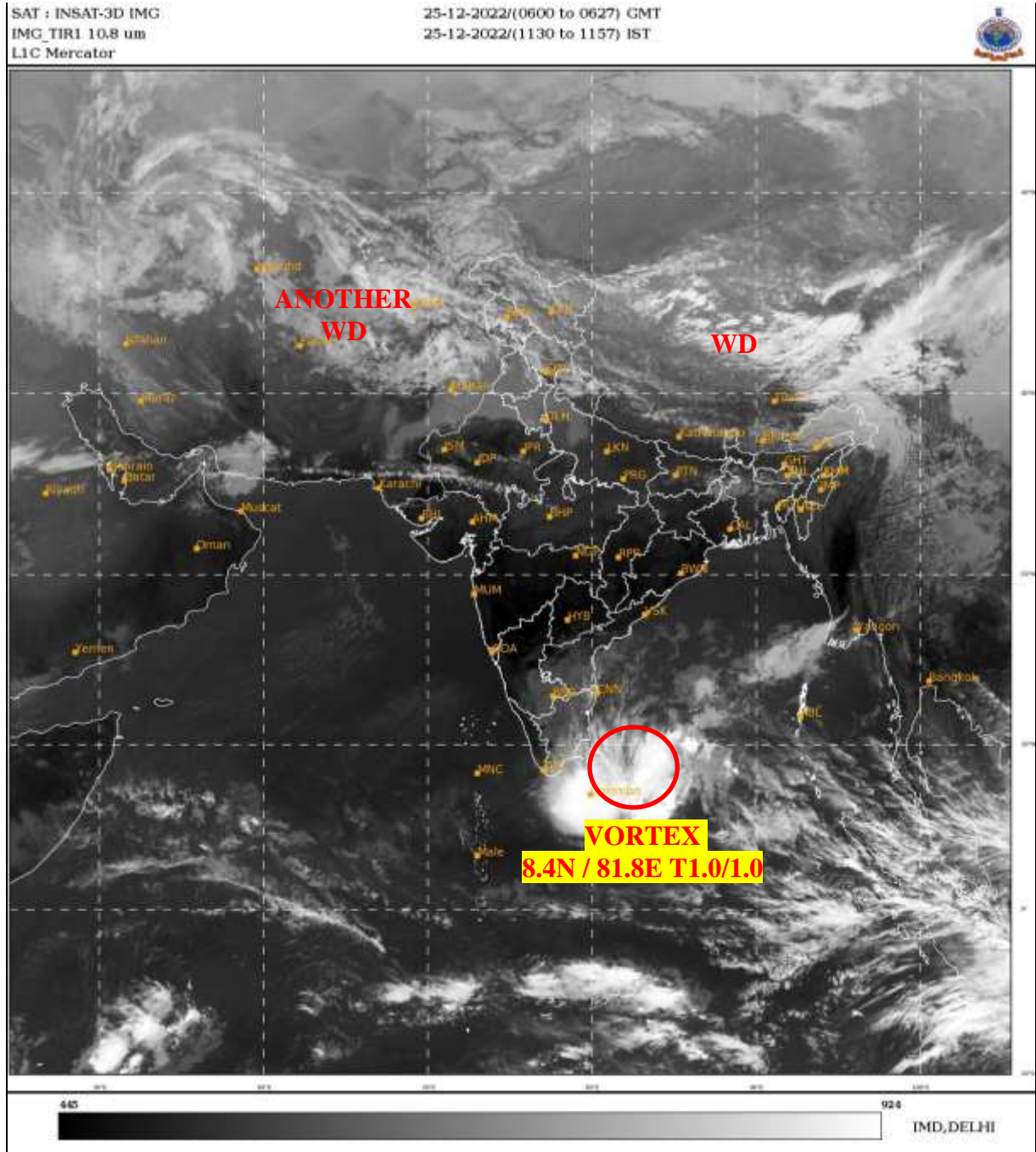




**SATELLITE BULLETIN BASED ON SATELLITE  
IMAGERIES AND PRODUCTS**  
**25.12.2022 TIME 0600 UTC**



TCIN50 DEMS 250600

SATELLITE BULLETIN BASED ON INSAT-3D PIC OF 250600 UTC (.)

REGION COVERED BETWEEN LAT 50.0°N TO 35.0°S AND LONG 40.0°E TO 125.0°E (.)

**SALIENT FEATURES:-**

**VORTEX OVER SOUTH-WEST BAY:-**

VORTEX OVER SW BAY CENTERED WITHIN HALF A DEGREE OF **8.4N / 81.8E** (.) INTENSITY **T1.0/1.0** (.) ABOUT 50 KM AWAY FROM EAST SRILANKA COAST (.) ASSTD SCT TO BKN LOW/MED CLOUDS WITH EMBDD INTENSE TO VERY INTENSE CONVECTION OVER SW BAY ADJ SRI LANKA BET LAT 5.0N TO 11.0N LONG 80.0E TO 86.0E (.) MINIMUM CTT **MINUS 93 DEG CEL** (.)

**WESTERN DISTURBANCE:-**

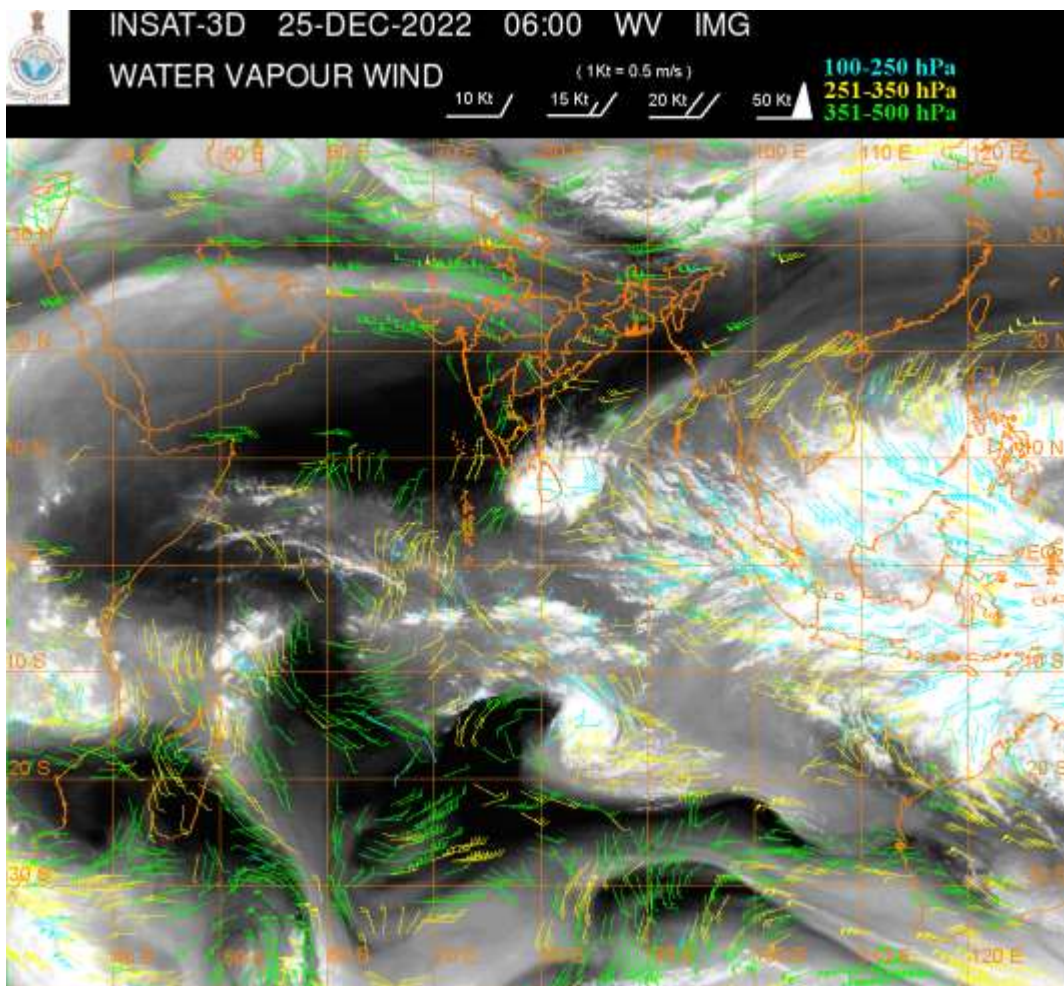
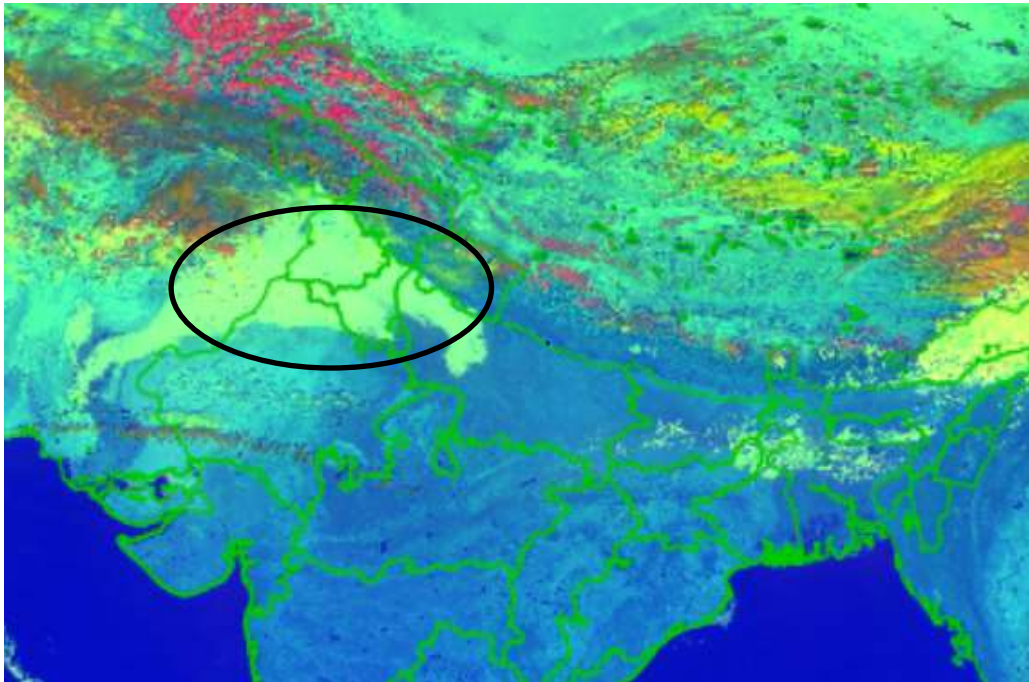
SCT MULTILAYERED CLOUDS OVER E TIBET ADJ CHINA IN ASSW **WD** OVER THE AREA (.)

SCT MULTILAYERED CLOUDS OVER CASPIAN SEA IRAN AFGAN PAK AND N/HOOD IN ASSW **ANOTHER WD** OVER THE AREA (.)



**FOG / LOW CLOUDS:-**

**DAY MICROPHYSICS IMAGERY OF INSAT-3D (RAPID) AT 0600 UTC INDICATES SCT TO BKN FOG / LOW CLOUDS OVER NE PAK S J&K SW HP PJB NW RAJ HARY NW UP ADJ S UTKND (.)**



**CLOUDS DESCRIPTION WITHIN INDIA:-**

**NORTH:-**

**SCT LOW/MED CLOUDS WITH EMBDD WK TO MOD CONVTN OVER LADAKH J&K HP W&NE UTRKND N PJB (.) ISOL LOW/MED CLOUDS OVER SE UTRKND (.)**

**EAST:-**

**SCT LOW/MED CLOUDS WITH EMBDD WK CONVTN OVER SKM ARUPR NE ASSAM (.) SCT LOW/MED CLOUDS OVER BHR NE JHRKND N CHTGH N GWB SHWB REST NE STATES (.)**

**WEST:-**

**SCT LOW/MED CLOUDS WITH EMBDD MOD TO INT CONVTN OVER S RAJ (.) ISOL TO SCT LOW/MED CLOUDS OVER N RAJ N MP (.)**

**SOUTH:-**

SCT LOW/MED CLOUDS WITH EMBDD ISOL WK TO MOD CONVTN OVER E TN NICOBAR ILS (.)  
SCT LOW/MED CLOUDS OVER SIK RYLSM REST TN S KER S COTL AP ANDAMAN ILS (.)

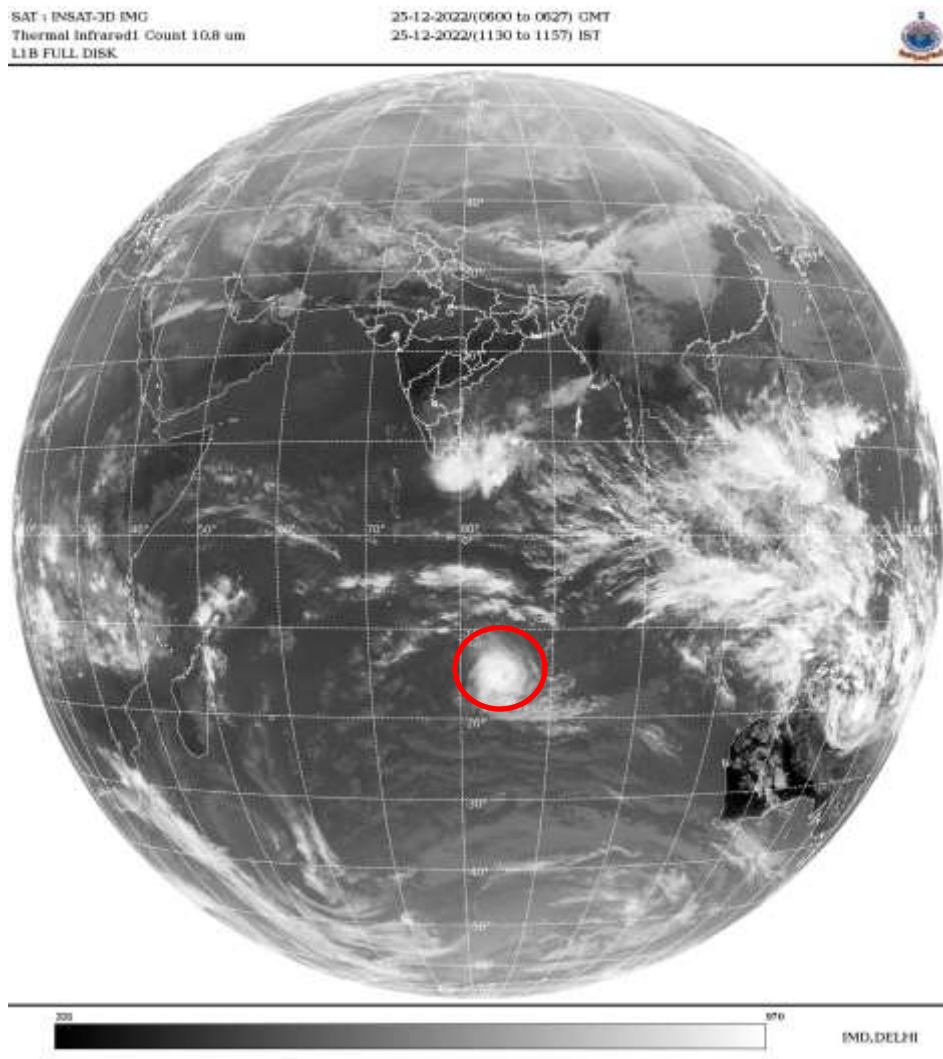
**ARABIAN SEA:-**

SCT LOW/MED CLOUDS WITH EMBDD INT TO V INT CONVTN OVER EAST PARTS OF  
COMORIN AREA AND ISOL WK TO MOD CONVTN OVER NW & EXT SW ARSEA (.)

**BAY OF BENGAL & ANDAMAN SEA:-**

SCT TO BKN LOW/MED CLOUDS WITH EMBDD INT TO V INT CONVTN OVER SW BAY (.) SCT  
LOW/MED CLOUDS WITH EMBDD MOD TO INT CONVTN OVER SE BAY S ANDAMAN SEA AND  
WK TO MOD CONVTN OVER CENTRAL BAY N ANDAMAN SEA (.)

**CLOUDS DESCRIPTION OUTSIDE INDIA:-**



**VORTEX (DARIAN) OVER SOUTH INDIAN OCEAN:-**

VORTEX (DARIAN) OVER SOUTH INDIAN OCEAN (AREA-E85) CENTERED NEAR 15.0S / 84.7E (.)  
INTENSITY T4.5/5.0 (.) CURVED BAD PATTERN (.) CORRESPONDING MAXIMUM SUSTAINED  
WINDS OF 90-119 KTS (.) ASSTD BKN LOW/MED CLOUDS WITH EMBDD INT TO V INT CONVTN  
OVER AREA BET LAT 12.0S TO 19.0S AND LONG 81.0E TO 87.0E (.)

SCT LOW/MED CLOUDS WITH EMBDD MOD TO INT CONVTN OVER SRI LANKA PALK STR  
GULF OF MANNAR TIBET CHINA S MYANMAR THAILAND GULF OF THAILAND CAMBODIA S  
LAOS S VIETNAM SUMATRA STR OF MALACCA MALAYSIA BORNEO SOUTH CHINA SEA JAVA  
ILS & SEA CELEBES ILS & SEA PHILIPPINES SULU SEA N MADAGASCAR N MOZAMBIQUE  
CHANNEL AND OVER INDIAN OCEAN BET LAT 5.0N TO 20.0S LONG 50.0E TO 125.0E (.)

TOO 25/1240 HRS IST=

NNNN

**LEGEND:-**

	NORTH	J&K HP PJB HARY DLH UP UTRKND
--	-------	-------------------------------

<b>REGION</b>	<b>EAST</b>	<b>BHR JHRKND CHTGH OR WB SKM NORTH- EAST STATES</b>
	<b>WEST</b>	<b>RAJ MP GUJ MAHA GOA</b>
	<b>SOUTH</b>	<b>TLNGN AP KRNTK KER TN LKSDP ANDAMAN &amp; NICOBAR ILS</b>

<b>CLOUD DISTRIBUTION</b>	<b>ISOL</b>	<b>ISOLATED (LESS THAN 25%)</b>	
	<b>SCT</b>	<b>SCATTERED (25 TO 50%)</b>	
	<b>BKN</b>	<b>BROKEN (51 TO 75%)</b>	
	<b>SLD</b>	<b>SOLID (GREATER THAN 75%)</b>	
<b>CLOUDS TOP TEMPERATURE</b>	<b>CTT</b>	<b>CLOUD TOP TEMPERATURE</b>	
<b>CONVECTION</b>	<b>WK CONVTN</b>	<b>WEAK CONVECTION (CTT GREATER THAN -25°C)</b>	
	<b>MOD CONVTN</b>	<b>MODERATE CONVECTION (CTT BETWEEN -25°C TO -40°C)</b>	
	<b>INT CONVTN</b>	<b>INTENSE CONVECTION (CTT BETWEEN -41°C TO -70°C)</b>	
	<b>V INT CONVTN</b>	<b>VERY INTENSE CONVECTION (CTT LESS THAN -70°C)</b>	
<b>METEOROLOGICAL SUB-DIVISIONS, STATES &amp; UNION TERRITORIES</b>	<b>ARUPR</b>	<b>ARUNACHAL PRADESH</b>	
	<b>BHR</b>	<b>BIHAR</b>	
	<b>CHTGH</b>	<b>CHHATTISGARH</b>	
	<b>COTL AP</b>	<b>COASTAL ANDHRA PRADESH</b>	
	<b>COTL KRNTK</b>	<b>COASTAL KARNATAKA</b>	
	<b>COTL ORS</b>	<b>COASTAL ORISSA</b>	
	<b>GUJ</b>	<b>GUJARAT</b>	
	<b>GWB</b>	<b>GANGETIC WEST BENGAL</b>	
	<b>HARY</b>	<b>HARYANA</b>	
	<b>DLH</b>	<b>DELHI</b>	
	<b>HP</b>	<b>HIMACHAL PRADESH</b>	
	<b>J&amp;K</b>	<b>JAMMU AND KASHMIR</b>	
	<b>JHRKND</b>	<b>JHARKHAND</b>	
	<b>KER</b>	<b>KERALA</b>	
	<b>KKN</b>	<b>KONKAN</b>	
	<b>LKSDP</b>	<b>LAKSHADWEEP</b>	
	<b>M MAHA</b>	<b>MADHYA MAHARASHTRA</b>	
	<b>MAHA</b>	<b>MAHARASHTRA</b>	
	<b>MANI</b>	<b>MANIPUR</b>	
	<b>MEGHA</b>	<b>MEGHALAYA</b>	
	<b>MIZO</b>	<b>MIZORAM</b>	
	<b>MP</b>	<b>MADHYA PRADESH</b>	
		<b>MRTHWD</b>	<b>MARATHWADA</b>
		<b>NAGA</b>	<b>NAGALAND</b>
<b>N COTL AP</b>		<b>NORTH COASTAL ANDHRA PRADESH</b>	
<b>NIK</b>		<b>NORTH INTERIOR KARNATAKA</b>	
<b>ORS</b>		<b>ORISSA</b>	
<b>PJB</b>		<b>PUNJAB</b>	

	<b>RAJ</b>	<b>RAJASTHAN</b>
	<b>RYLSM</b>	<b>RAYALASEEMA</b>
	<b>SAU &amp; KUTCH</b>	<b>SAURASHTRA &amp; KUTCH</b>
	<b>SHWB</b>	<b>SUB-HIMALAYAN WEST BENGAL</b>
	<b>SIK</b>	<b>SOUTH INTERIOR KARNATAKA</b>
	<b>SKM</b>	<b>SIKKIM</b>
	<b>TLNGN</b>	<b>TELANGANA</b>
	<b>TN</b>	<b>TAMIL NADU</b>
	<b>TRP</b>	<b>TRIPURA</b>
	<b>UP</b>	<b>UTTAR PRADESH</b>
	<b>UTRKND</b>	<b>UTTARAKHAND</b>
	<b>VID</b>	<b>VIDHARBHA</b>
	<b>SHWB</b>	<b>SUB HIMALAYAN WEST BENGAL</b>
	<b>GWB</b>	<b>GANGETIC WEST BENGAL</b>
	<b>ARSEA</b>	<b>ARABIAN SEA</b>
	<b>ILS</b>	<b>ISLANDS</b>
<b>MISCELLANEOUS</b>	<b>ASSW</b>	<b>IN ASSOCIATION WITH</b>
	<b>ASSTD</b>	<b>ASSOCIATED</b>
	<b>LLC</b>	<b>LOW LEVEL CIRCULATION</b>
	<b>EMBDD</b>	<b>EMBEDDED</b>
	<b>N/HOOD</b>	<b>NEIGHBOURHOOD</b>
	<b>EXT</b>	<b>EXTREME</b>