

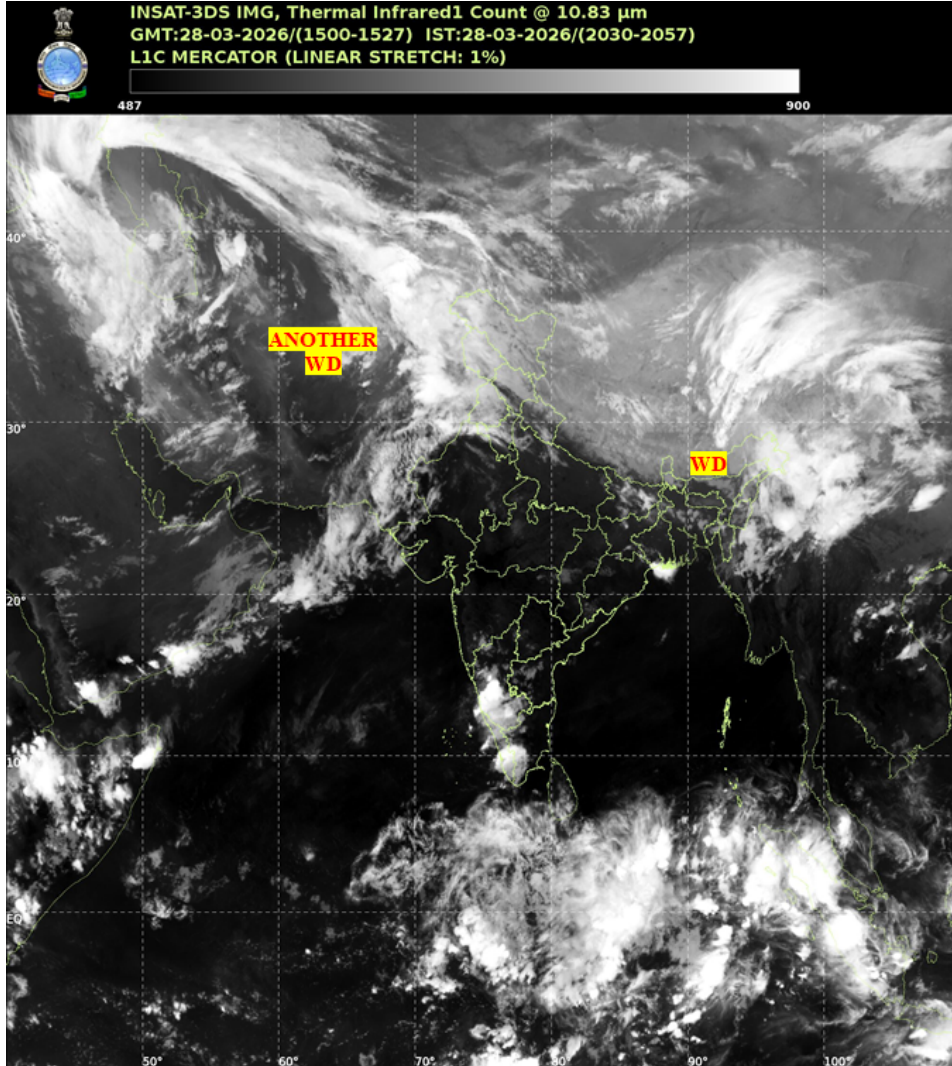


भारत मौसम विज्ञान विभाग  
पृथ्वी विज्ञान मंत्रालय  
India Meteorological Department  
Ministry of Earth Sciences



**SATELLITE BULLETIN BASED ON SATELLITE IMAGERIES AND PRODUCTS**

Date: 2026-03-28 Time: 15:00:00 UTC



TCIN50 DEMS 281500

SATELLITE BULLETIN BASED ON INSAT-3DS PIC OF 281500 UTC (.)

REGION COVERED BETWEEN LAT 50.0°N TO 35.0°S AND LONG 40.0°E TO 125.0°E (.)

**SALIENT FEATURES:**

**WESTERN DISTURBANCE (WD):-**

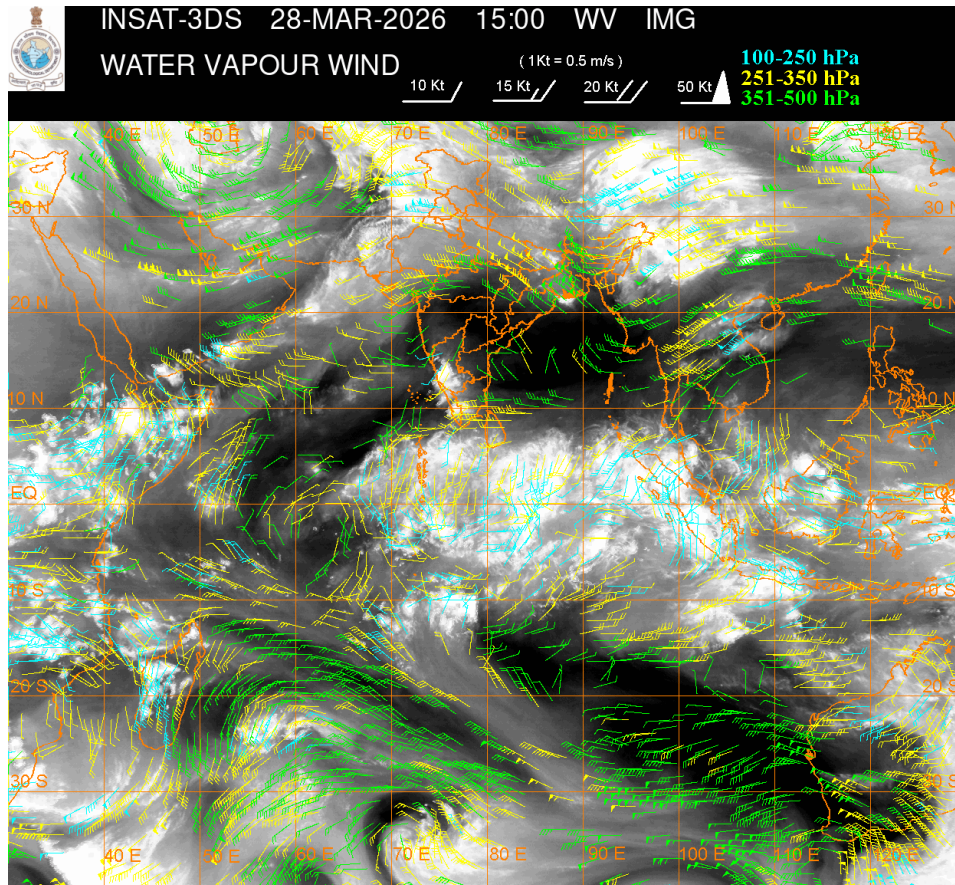
SCT TO BKN MULTILAYERED CLOUDS OVER NORTH-EAST STATES EAST TIBET ADJ CHINA AND N/HOOD IN ASSW WD OVER THE AREA (.)

SCT TO BKN MULTILAYERED CLOUDS OVER CASPIAN SEA IRAN AFGAN PAK LADAKH J&K HP UTRKND PJB HARY NW UP RAJ AND N/HOOD IN ASSW ANOTHER WD OVER THE AREA (.)

**CONVECTIVE / THUNDERSTORM ACTIVITY:-**

**INTENSE TO VERY INTENSE CONVECTIVE / THUNDERSTORM ACTIVITY OBSERVED OVER COTL GWB  
COTL KRNTK SIK KER W TN (MINIMUM CTT MINUS 60-80 DEGREE CEL) (.)**

**MODERATE TO INTENSE CONVECTIVE / THUNDERSTORM ACTIVITY OBSERVED OVER LADAKH J&K  
HP PJB HARY BHR ARUPR E ASSAM NIK (MINIMUM CTT MINUS 40-60 DEGREE CEL) (.)**



**CLOUD DESCRIPTION WITHIN INDIA:**

**NORTH:**

**SCT LOW/MED CLOUDS WITH EMBDD MOD TO INT CONVTN OVER LADAKH J&K HP PJB HARY (.)  
SCT LOW/MED CLOUDS WITH EMBDD ISOL WK TO MOD CONVTN OVER UTRKND NW UP (.) ISOL  
TO SCT LOW/MED CLOUDS OVER DLH REST UP (.)**

**EAST:**

**SCT LOW/MED CLOUDS WITH EMBDD INT TO V INT CONVTN OVER COTL GWB AND MOD TO INT  
CONVTN OVER BHR ARUPR E ASSAM (.) SCT LOW/MED CLOUDS WITH EMBDD ISOL WK TO MOD  
CONVTN OVER JHRKND CHTGH ORS REST GWB SHWB SKM REST NE STATES & BD (.)**

**WEST:**

**SCT LOW/MED CLOUDS WITH EMBDD ISOL WK TO MOD CONVTN OVER RAJ SOUTH MADHYA  
MAHA (.) ISOL TO SCT LOW/MED CLOUDS OVER NW & SE MP W GUJ VID (.)**

**SOUTH:**

**SCT TO BKN LOW/MED CLOUDS WITH EMBDD INT TO V INT CONVTN OVER COTL KRNTK SIK KER  
W TN (.) SCT LOW/MED CLOUDS WITH EMBDD MOD TO INT CONVTN OVER NIK AND ISOL WK TO  
MOD CONVTN OVER RYLSM NICOBAR ILS AREA (.) SCT LOW/MED CLOUDS OVER SW TLNGN COTL  
AP E TN LKSDP ILS AREA ANDAMAN ILS AREA (.)**

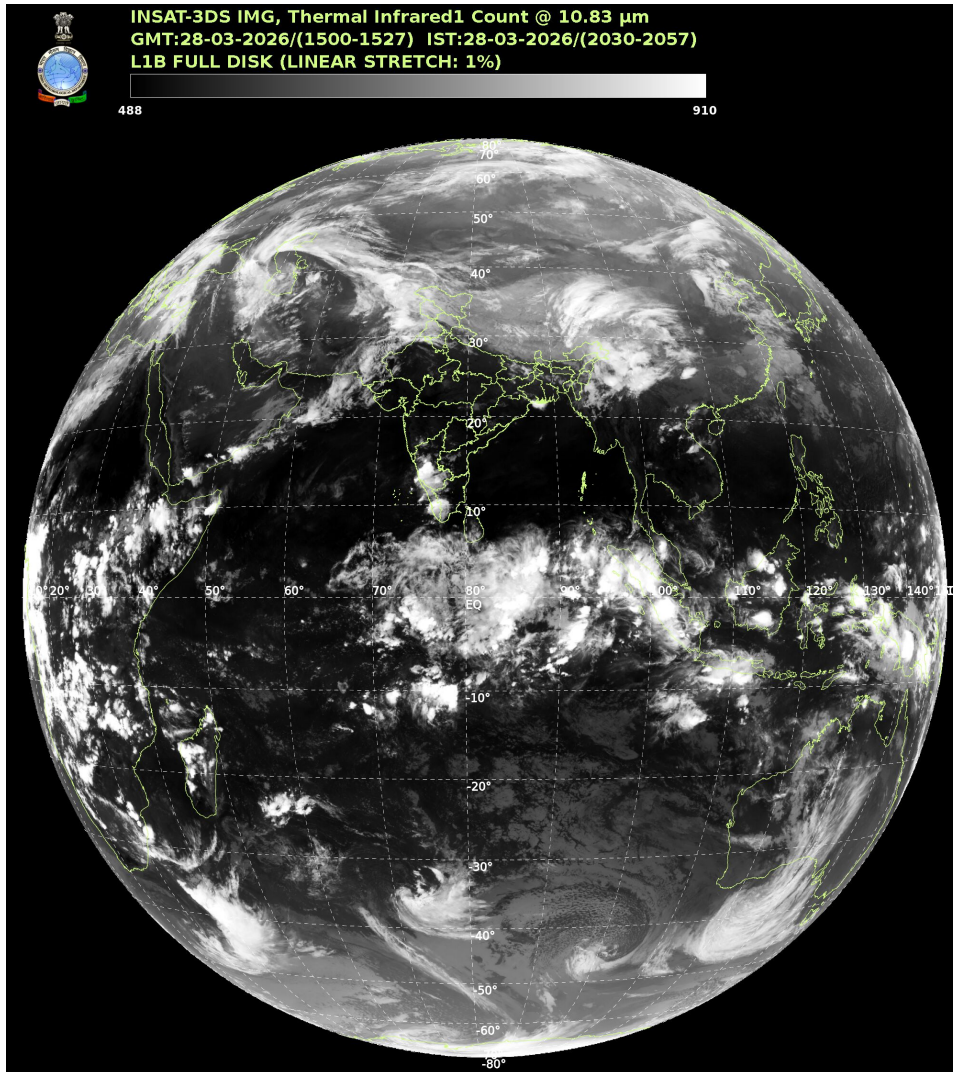
**ARABIAN SEA:**

SCT LOW/MED CLOUDS WITH EMBDD MOD TO INT CONVTN OVER NORTH & WC ARSEA SE ARSEA MALDIVES AND COMORIN AREA (.)

**BAY OF BENGAL & ANDAMAN SEA:**

SCT LOW/MED CLOUDS WITH EMBDD MOD TO INT CONVTN OVER NW BAY ADJ COTL GWB SOUTH BAY SOUTH OF LAT 08.0N AND SOUTH ANDAMAN SEA (.)

**CLOUD DESCRIPTION OUTSIDE INDIA:**



SCT LOW/MED CLOUDS WITH EMBDD MOD TO INT CONVTN OVER SRI LANKA MALDIVES AREA PAK NEPAL BHUTAN TIBET CHINA YELLOW SEA EAST CHINA SEA NORTH MYANMAR LAOS NORTH VIETNAM SUMATRA STR OF MALACCA MALAYSIA BORNEO SOUTH CHINA SEA JAVA ILS & SEA CELEBES ILS & SEA PHILIPPINES SULU SEA MADAGASCAR MOZAMBIQUE CHANNEL AND OVER INDIAN OCEAN BET LAT 5.0N TO LAT 20.0S LONG 40.0E TO 120.0E AND BET LAT 20.0S TO LAT 35.0S LONG 40.0E TO 80.0E (.)

T00 28/2130 HRS IST

NNNN

**LEGEND**

| REGION |                               |
|--------|-------------------------------|
| NORTH  | J&K HP UTRKND PJB HARY DLH UP |

|   |  |
|---|--|
| <b>EAST</b>   | <b>BHR JHRKND CHTGH ORS WB SKM NORTH-EAST STATES</b>         |
| <b>WEST</b>   | <b>RAJ MP GUJ MAHA GOA</b>                                   |
| <b>SOUTH</b>  | <b>TLNGN AP KRNTK KER TN LKSDP ANDAMAN &amp; NICOBAR ILS</b> |
| <b>CLOUD DISTRIBUTION</b>   |  |
| <b>ISOL</b>   | <b>ISOLATED (LESS THAN 25%)</b>                              |
| <b>SCT</b>  | <b>SCATTERED (25 TO 50%)</b>                                 |
| <b>BKN</b>  | <b>BROKEN (51 TO 75%)</b>                                    |
| <b>SLD</b>  | <b>SOLID (GREATER THAN 75%)</b>                              |
| <b>CLOUDS TOP TEMPERATURE</b>                                       |  |
| <b>CTT</b>  | <b>CLOUD TOP TEMPERATURE</b>                                 |
| <b>CONVECTION</b>   |  |
| <b>WK CONVTN</b>  | <b>WEAK CONVECTION (CTT GREATER THAN -25°C)</b>              |
| <b>MOD CONVTN</b>   | <b>MODERATE CONVECTION (CTT BETWEEN -25°C TO -40°C)</b>      |
| <b>INT CONVTN</b>   | <b>INTENSE CONVECTION (CTT BETWEEN -41°C TO -70°C)</b>       |
| <b>V INT CONVTN</b>   | <b>VERY INTENSE CONVECTION (CTT LESS THAN -70°C)</b>         |
| <b>METEOROLOGICAL SUB-DIVISIONS, STATES &amp; UNION TERRITORIES</b> |  |
| <b>J&amp;K</b>  | <b>JAMMU AND KASHMIR</b>                                     |
| <b>HP</b>   | <b>HIMACHAL PRADESH</b>                                      |
| <b>UTRKND</b>   | <b>UTTARAKHAND</b>   |
| <b>PJB</b>  | <b>PUNJAB</b>  |
| <b>HARY</b>   | <b>HARYANA</b>   |
| <b>DLH</b>  | <b>DELHI</b>   |
| <b>BHR</b>  | <b>BIHAR</b>   |
| <b>JHRKND</b>   | <b>JHARKHAND</b>   |
| <b>CHTGH</b>  | <b>CHHATTISGARH</b>  |
| <b>ORS</b>  | <b>ORISSA</b>  |
| <b>GWB</b>  | <b>GANGETIC WEST BENGAL</b>                                  |
| <b>SHWB</b>   | <b>SUB-HIMALAYAN WEST BENGAL</b>                             |
| <b>SKM</b>  | <b>SIKKIM</b>  |
| <b>ARUPR</b>  | <b>ARUNACHAL PRADESH</b>                                     |
| <b>ASSAM</b>  | <b>ASSAM</b>   |
| <b>MEGHA</b>  | <b>MEGHALAYA</b>   |
| <b>MANI</b>   | <b>MANIPUR</b>   |
| <b>MIZO</b>   | <b>MIZORAM</b>   |

|                        |                                 |
|------------------------|---------------------------------|
| <b>TRP</b>             | <b>TRIPURA</b>                  |
| <b>RAJ</b>             | <b>RAJASTHAN</b>                |
| <b>MP</b>              | <b>MADHYA PRADESH</b>           |
| <b>GUJ</b>             | <b>GUJARAT</b>                  |
| <b>SAU &amp; KUTCH</b> | <b>SAURASHTRA &amp; KUTCH</b>   |
| <b>MAHA</b>            | <b>MAHARASHTRA</b>              |
| <b>M MAHA</b>          | <b>MADHYA MAHARASHTRA</b>       |
| <b>MRTHWD</b>          | <b>MARATHWADA</b>               |
| <b>VID</b>             | <b>VIDARBHA</b>                 |
| <b>KKN</b>             | <b>KONKAN</b>                   |
| <b>TLNGN</b>           | <b>TELANGANA</b>                |
| <b>RYLSM</b>           | <b>RAYALSEEMA</b>               |
| <b>COTL AP</b>         | <b>COASTAL ANDHRA PRADESH</b>   |
| <b>NIK</b>             | <b>NORTH INTERIOR KARNATAKA</b> |
| <b>SIK</b>             | <b>SOUTH INTERIOR KARNATAKA</b> |
| <b>COTL KRNTK</b>      | <b>COASTAL KARNATAKA</b>        |
| <b>KER</b>             | <b>KERALA</b>                   |
| <b>TN</b>              | <b>TAMILNADU</b>                |
| <b>LKSDP</b>           | <b>LAKSHADWEEP</b>              |
| <b>ILS</b>             | <b>ISLANDS</b>                  |
| <b>ARSEA</b>           | <b>ARABIAN SEA</b>              |
| <b>MISCELLANEOUS</b>   |                                 |
| <b>ASSW</b>            | <b>IN ASSOCIATION WITH</b>      |
| <b>ASSTD</b>           | <b>ASSOCIATED</b>               |
| <b>LLC</b>             | <b>LOW LEVEL CIRCULATION</b>    |
| <b>EMBDD</b>           | <b>EMBEDDED</b>                 |
| <b>N/HOOD</b>          | <b>NEIGHBOURHOOD</b>            |
| <b>EXT</b>             | <b>EXTREME</b>                  |