



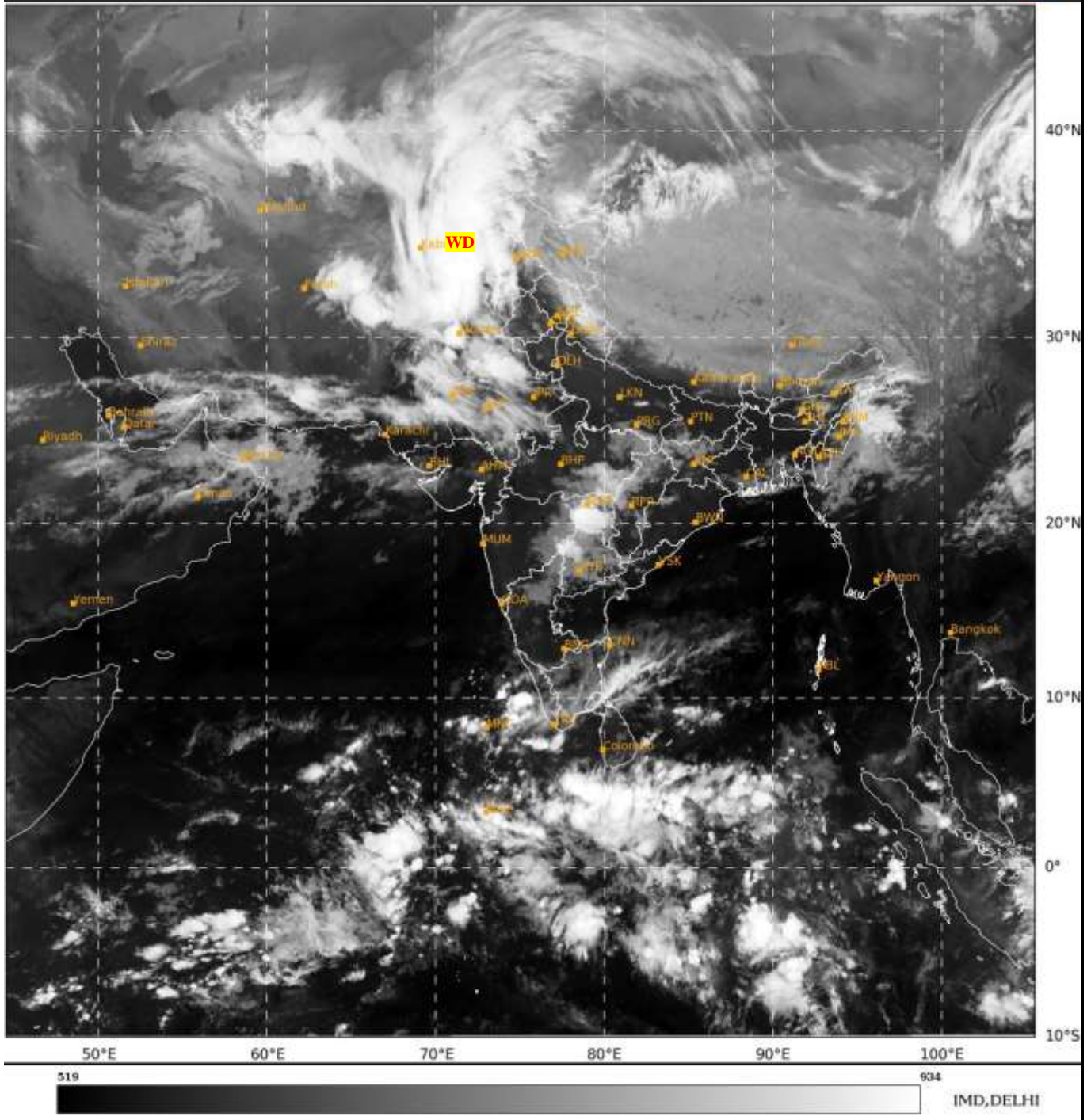
भारत मौसम विज्ञान विभाग
पृथ्वी विज्ञान मंत्रालय
India Meteorological Department
Ministry of Earth Sciences



**SATELLITE BULLETIN BASED ON SATELLITE
IMAGERIES AND PRODUCTS**
13.04.2024 TIME 0000 UTC

SAT : INSAT-3D IMG
IMG_TIR1 10.8 um
LIC Mercator

13-04-2024/(0000 to 0026) GMT
13-04-2024/(0530 to 0556) IST



TCIN50 DEMS 130000

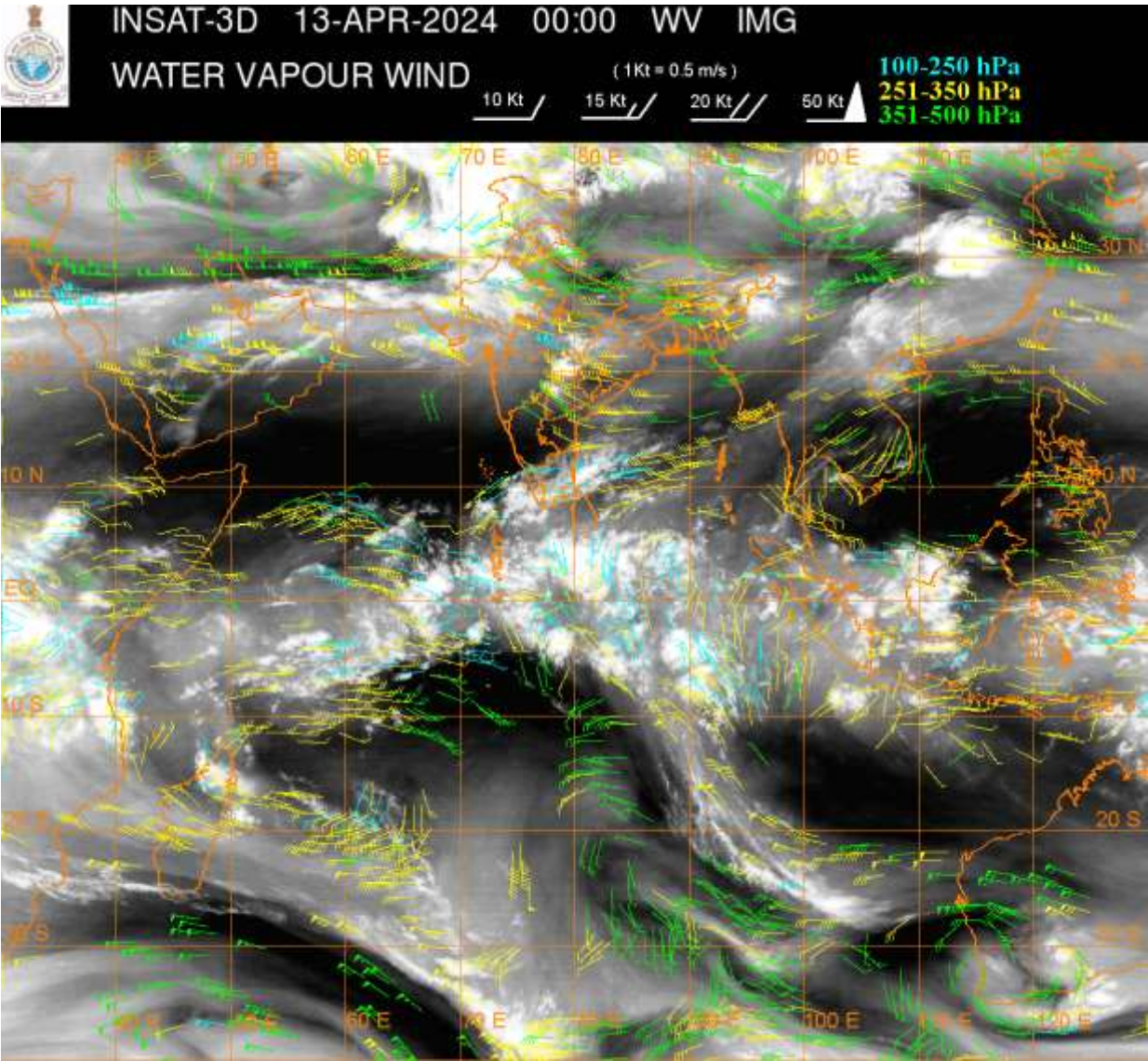
SATELLITE BULLETIN BASED ON INSAT-3D PIC OF 130000 UTC (.)

REGION COVERED BETWEEN LAT 50.0°N TO 35.0°S AND LONG 30.0°E TO 125.0°E (.)

SALIENT FEATURES:-

WESTERN DISTURBANCE:-

SCT TO BKN MULTILAYERED CLOUDS OVER AFGAN PAK LADAKH J&K PJB HARY RAJ
AND N/HOOD IN ASSW **WD** OVER THE AREA (.)



THUNDERSTORM / CONVECTIVE ACTIVITY:-

INTENSE THUNDERSTORM / CONVECTIVE ACTIVITY OVER N RAJ VID EXT NW LADAKH (MINIMUM **CTT MINUS 70 DEG CEL**) MODERATE THUNDERSTORM/CONVECTIVE ACTIVITY OVER S RAJ SE MP SIK TN GWB E ASSAM NAGA MANI (MINIMUM **CTT MINUS 50 DEG CEL**) (.)

CLOUDS DESCRIPTION WITHIN INDIA:-

NORTH:-

SCT LOW/MED CLOUDS WITH EMBDD INT TO V INT CONVTN OVER NW LADAKH (.) SCT LOW/MED CLOUDS WITH EMBDD MOD TO INT CONVTN OVER J&K PJB UP AND WK TO MOD CONVTN OVER HP UTRKND NE HARY (.) SCT LOW/MED CLOUDS OVER REST HARY DLH (.)

EAST:-

SCT LOW/MED CLOUDS WITH EMBDD MOD TO INT CONVTN OVER S BHR N JHRKND GWB E ASSAM NAGA MANI (.) SCT LOW/MED CLOUDS WITH EMBDD WK TO MOD CONVTN OVER CHTGH N ORS SHWB SKM ARUPR & BD (.) SCT LOW/MED CLOUDS OVER W ASSAM REST NE STATES (.)

WEST:-

SCT LOW/MED CLOUDS WITH EMBDD INT TO V INT CONVTN OVER N RAJ VID (.) SCT TO BKN LOW/MED CLOUDS WITH EMBDD MOD TO INT CONVTN OVER SE MP S RAJ REST MRTHWD AND WK TO MOD CONVTN OVER REST MP REST MAHA N GUJ (.) SCT LOW/MED CLOUDS OVER S GUJ (.)

SOUTH:-

SCT LOW/MED CLOUDS WITH EMBDD ISOL MOD TO INT CONVTN OVER KER TN COTL AP AND WK TO MOD CONVTN OVER RYLSM TLNGN (.) SCT LOW/MED CLOUDS OVER LKSDP ILS & NICOBAR ILS (.)

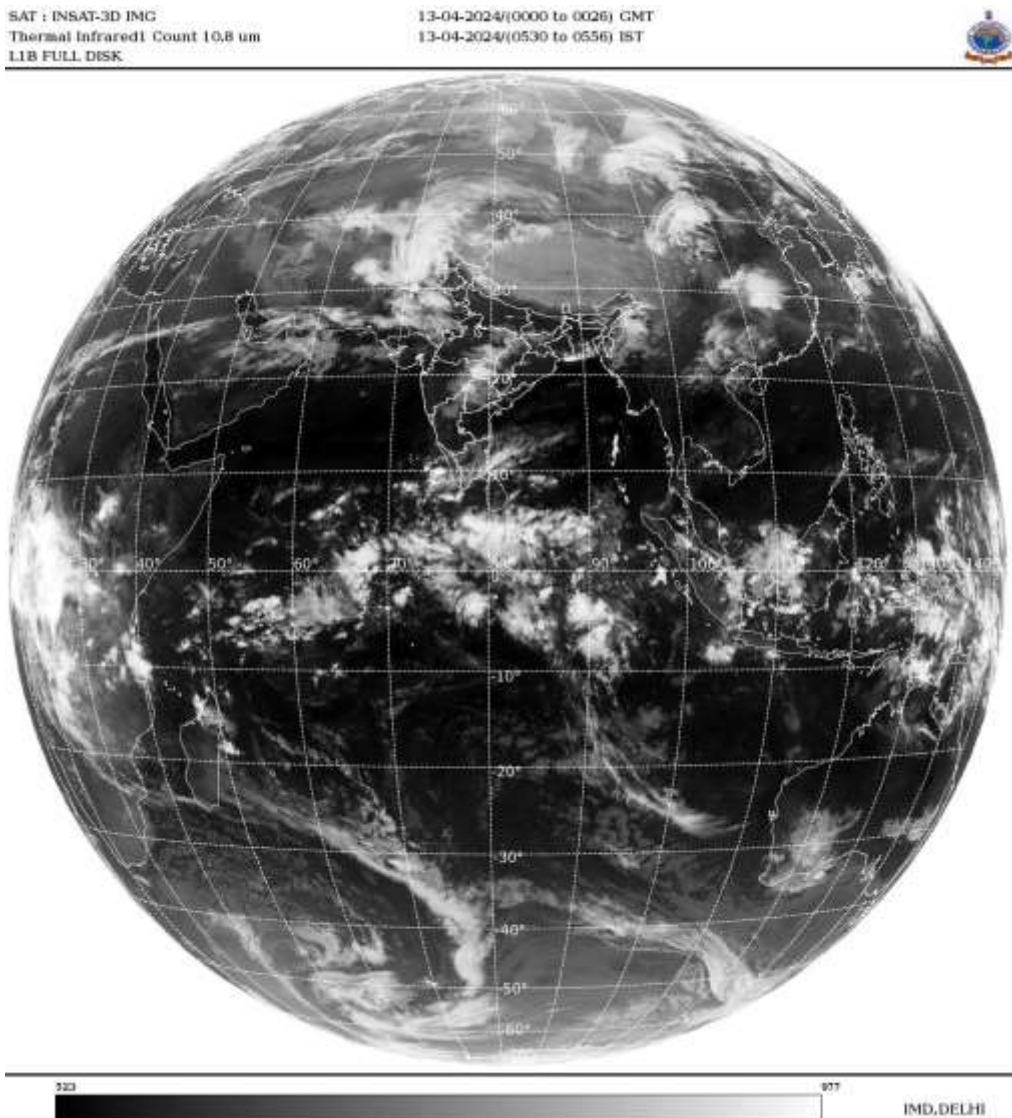
ARABIAN SEA:-

SCT TO BKN LOW/MED CLOUDS WITH EMBDD INT TO V INT CONVTN OVER SE ARSEA OFF S KER COAST LKSDP ILS MALDIVES & COMORIN AREA (MINIMUM **CTT MINUS 80 DEG CEL**) (.) SCT LOW/MED CLOUDS WITH EMBDD MOD TO INT CONVTN OVER S ARSEA SOUTH OF LAT 8.0N AND WK TO MOD CONVTN OVER N ARSEA (.)

BAY OF BENGAL & ANDAMAN SEA:-

SCT TO BKN LOW/MED CLOUDS WITH EMBDD INT TO V INT CONVTN OVER SW BAY (MINIMUM **CTT MINUS 90 DEG CELS**) & EXT SE BAY ADJ S ANDAMAN SEA (.) SCT LOW/MED CLOUDS WITH EMBDD WK TO MOD CONVTN OVER N BAY (.) SCT LOW/MED CLOUDS OVER REST BAY

CLOUDS DESCRIPTION OUTSIDE INDIA:-



SCT LOW/MED CLOUDS WITH EMBDD MOD TO INT CONVTN OVER MALDIVES SRI LANKA PALK STR GULF OF MANNAR PAK NEPAL CHINA YELLOW SEA ADJ EAST CHINA SEA MYANMAR THAILAND CAMBODIA LAOS SUMATRA STR OF MALACCA MALAYSIA BORNEO SOUTH CHINA SEA JAVA ILS & SEA CELEBES ILS & SEA MADAGASCAR MOZAMBIQUE CHANNEL AND OVER INDIAN OCEAN BET LAT 5.0N TO 20.0S LONG 40.0E TO 120.0E AND BET LAT 20.0S TO 35.0S LONG 40.0E TO 95.0E (.)

TOO 13/0640 HRS IST=

NNNN

LEGEND:-

REGION	NORTH	J&K HP PJB HARY DLH UP UTRKND
	EAST	BHR JHRKND CHTGH ORS WB SKM NORTH- EAST STATES

	WEST	RAJ MP GUJ MAHA GOA
	SOUTH	TLNGN AP KRNTK KER TN LKSDP ANDAMAN & NICOBAR ILS
CLOUD DISTRIBUTION	ISOL	ISOLATED (LESS THAN 25%)
	SCT	SCATTERED (25 TO 50%)
	BKN	BROKEN (51 TO 75%)
	SLD	SOLID (GREATER THAN 75%)
CLOUDS TOP TEMPERATURE	CTT	CLOUD TOP TEMPERATURE
CONVECTION	WK CONVTN	WEAK CONVECTION (CTT GREATER THAN -25°C)
	MOD CONVTN	MODERATE CONVECTION (CTT BETWEEN -25°C TO -40°C)
	INT CONVTN	INTENSE CONVECTION (CTT BETWEEN -41°C TO -70°C)
	V INT CONVTN	VERY INTENSE CONVECTION (CTT LESS THAN -70°C)
METEOROLOGICAL SUB- DIVISIONS, STATES & UNION TERRITORIES	ARUPR	ARUNACHAL PRADESH
	BHR	BIHAR
	CHTGH	CHHATTISGARH
	COTL AP	COASTAL ANDHRA PRADESH
	COTL KRNTK	COASTAL KARNATAKA
	COTL ORS	COASTAL ORISSA
	GUJ	GUJARAT
	GWB	GANGETIC WEST BENGAL
	HARY	HARYANA
	DLH	DELHI
	HP	HIMACHAL PRADESH
	J&K	JAMMU AND KASHMIR
	JHRKND	JHARKHAND
	KER	KERALA
	KKN	KONKAN
	LKSDP	LAKSHADWEEP
	M MAHA	MADHYA MAHARASHTRA
	MAHA	MAHARASHTRA
	MANI	MANIPUR
	MEGHA	MEGHALAYA
	MIZO	MIZORAM
MP	MADHYA PRADESH	
	MRTHWD	MARATHWADA
	NAGA	NAGALAND
	N COTL AP	NORTH COASTAL ANDHRA PRADESH
	NIK	NORTH INTERIOR KARNATAKA
	ORS	ORISSA
	PJB	PUNJAB
	RAJ	RAJASTHAN
	RYLSM	RAYALASEEMA
	SAU & KUTCH	SAURASHTRA & KUTCH

	SHWB	SUB-HIMALAYAN WEST BENGAL
	SIK	SOUTH INTERIOR KARNATAKA
	SKM	SIKKIM
	TLNGN	TELANGANA
	TN	TAMIL NADU
	TRP	TRIPURA
	UP	UTTAR PRADESH
	UTRKND	UTTARAKHAND
	VID	VIDHARBHA
	SHWB	SUB HIMALAYAN WEST BENGAL
	GWB	GANGETIC WEST BENGAL
	ARSEA	ARABIAN SEA
	ILS	ISLANDS
MISCELLANEOUS	ASSW	IN ASSOCIATION WITH
	ASSTD	ASSOCIATED
	LLC	LOW LEVEL CIRCULATION
	EMBDD	EMBEDDED
	N/HOOD	NEIGHBOURHOOD
	EXT	EXTREME