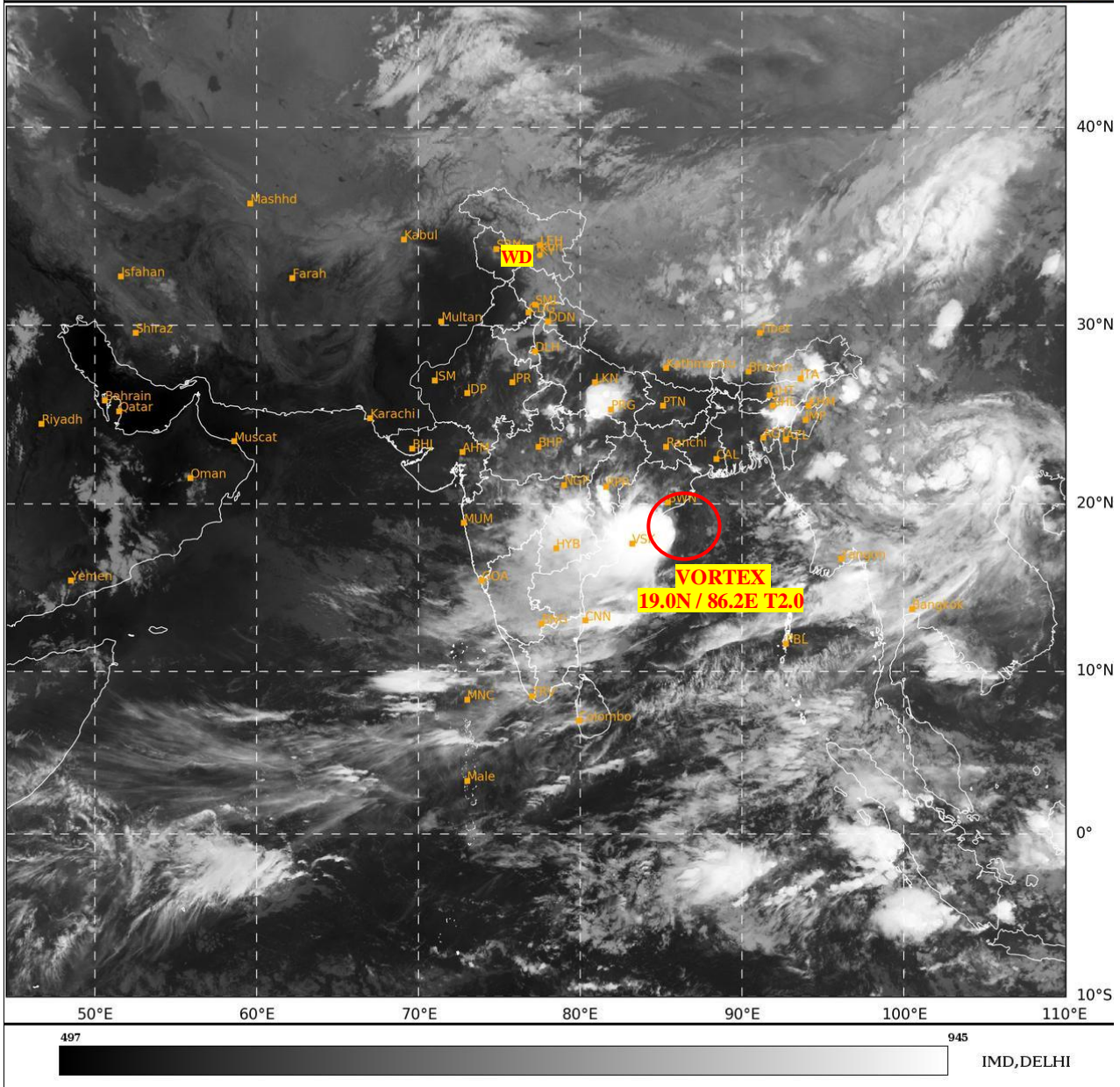




**SATELLITE BULLETIN BASED ON SATELLITE  
IMAGERIES AND PRODUCTS**  
**08.09.2024 TIME 2100 UTC**

SAT : INSAT-3DR IMG  
IMG\_TIR1 10.8 um  
LIC Mercator

08-09-2024/(2145 to 2212) GMT  
09-09-2024/(0315 to 0342) IST



TCIN50 DEMS 082100

SATELLITE BULLETIN BASED ON INSAT-3DR PIC OF 082145 UTC (.)

REGION COVERED BETWEEN LAT 50.0°N TO 35.0°S AND LONG 40.0°E TO 125.0°E (.)

**SALIENT FEATURES:-**

**VORTEX OVER NORTH WEST ADJ WEST CENTRAL BAY:-**

VORTEX OVER NW ADJ WC BAY CENTERED NEAR **19.0N / 86.2E** (.) INTENSITY **T2.0/2.0** (.)  
ASSTD SCT TO BKN LOW/MED CLOUDS WITH EMBDD INT TO V INT CONVTN OVER NW ADJ  
WC BAY N COTL AP S ORS S CHTGH VID TLNGN (MINIMUM **CTT MINUS 93 DEG CEL**) (.)

**WESTERN DISTURBANCE (WD):-**

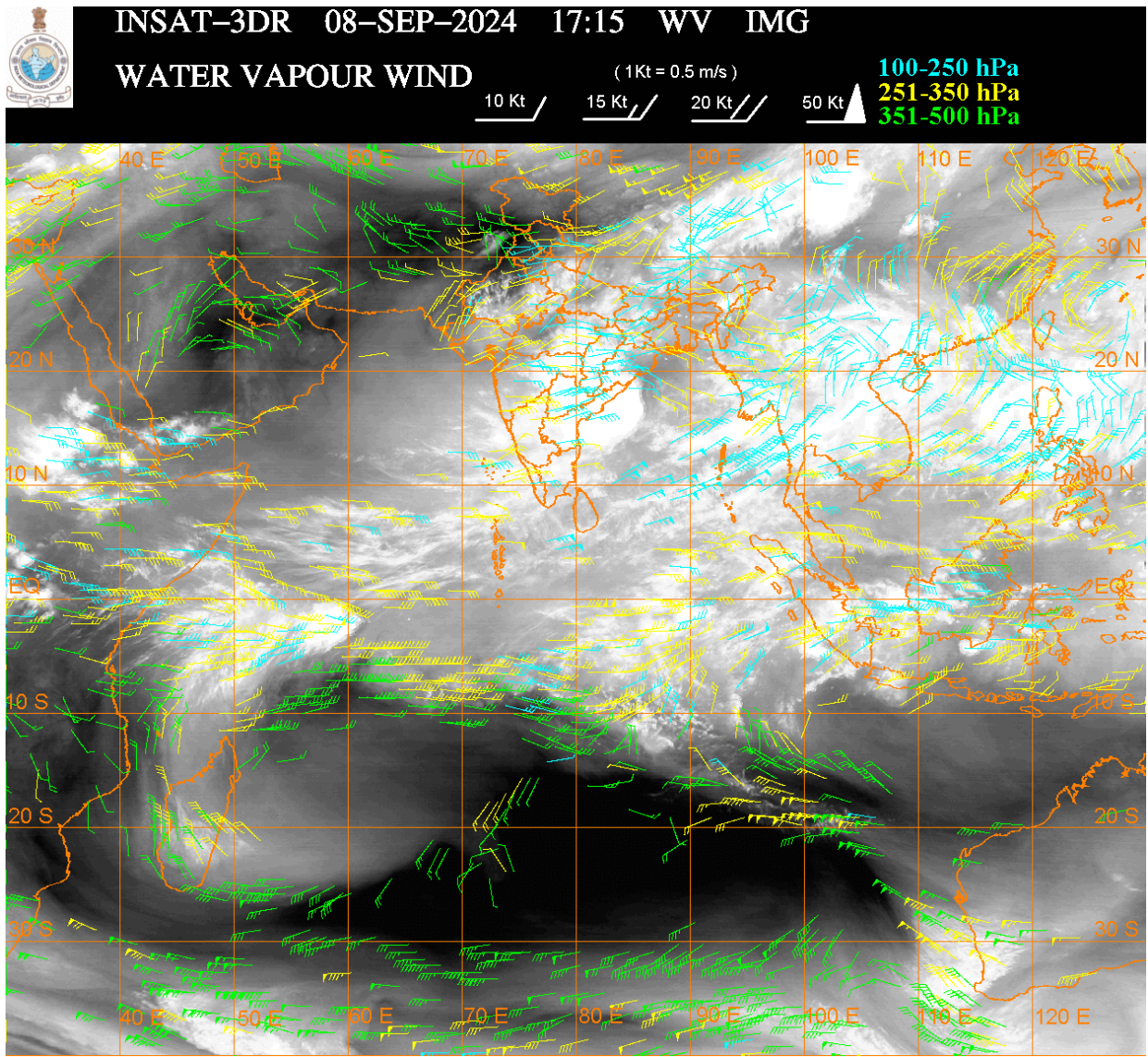
SCT MULTILAYERED CLOUDS OVER J&K LADAKH HP UTRKND TIBET ADJ CHINA IN ASSW  
**WD** OVER THE AREA (.)

**CONVECTIVE / THUNDERSTORM ACTIVITY:-**

INTENSE TO VERY INTENSE CONVECTIVE / THUNDERSTORM ACTIVITY OBSERVED OVER E  
UP S CHTGH S ORS MEGHA ASSAM ARUPR N MP VID TLNGN N COTL AP (MINIMUM **CTT  
MINUS 70-93 DEG CEL**) (.)



**MODERATE TO INTENSE CONVECTIVE / THUNDERSTORM ACTIVITY OBSERVED OVER W UP  
N CHTGH N ORS EXT SW GWB E RAJ S MP MRTHWD MADHYA MAHA KRNTK RYLSM S COTL  
AP KER TN LKSDP ILS ANDAMAN & NICOBAR ILS (MINIMUM CTT MINUS 50-70 DEG CEL) (.)**



**CLOUDS DESCRIPTION WITHIN INDIA:-**

**NORTH:-**

**SCT LOW/MED CLOUDS WITH EMBDD INT TO V INT CONVTN OVER E UP AND MOD TO INT CONVTN OVER W UP (.) SCT LOW/MED CLOUDS WITH EMBDD ISOL WK TO MOD CONVTN OVER LADAKH J&K HP UTRKND SE PJB HARY DLH (.) SCT LOW/MED CLOUDS OVER REST PJB (.)**

**EAST:-**

**SCT TO BKN LOW/MED CLOUDS WITH EMBDD INT TO V INT CONVTN OVER S CHTGH S ORS MEGHA ASSAM ARUPR (.) SCT LOW/MED CLOUDS WITH EMBDD MOD TO INT CONVTN OVER N CHTGH N ORS EXT SW GWB AND WK TO MOD CONVTN OVER SHWB SKM NAGA MANI MIZO TRP (.) SCT LOW/MED CLOUDS WITH EMBDD ISOL WK CONVTN OVER BHR JHRKND REST GWB (.)**

**WEST:-**

**SCT LOW/MED CLOUDS WITH EMBDD INT TO V INT CONVTN OVER N MP VID (.) SCT LOW/MED CLOUDS WITH EMBDD MOD TO INT CONVTN OVER E RAJ S MP MRTHWD MADHYA MAHA AND WK TO MOD CONVTN OVER W RAJ E GUJ KKN GOA (.) SCT LOW/MED CLOUDS OVER W GUJ (.)**

**SOUTH:-**

**SCT TO BKN LOW/MED CLOUDS WITH EMBDD INT TO V INT CONVTN OVER TLNGN N COTL AP (.) SCT LOW/MED CLOUDS WITH EMBDD MOD TO INT CONVTN OVER KRNTK RYLSM S COTL AP KER TN LKSDP ILS ANDAMAN & NICOBAR ILS (.)**

**ARABIAN SEA:-**

**SCT LOW/MED CLOUDS WITH EMBDD MOD TO INT CONVTN OVER EC & SOUTH ARSEA LKSDP ILS AREA MALDIVES & COMORIN AREA (.)**

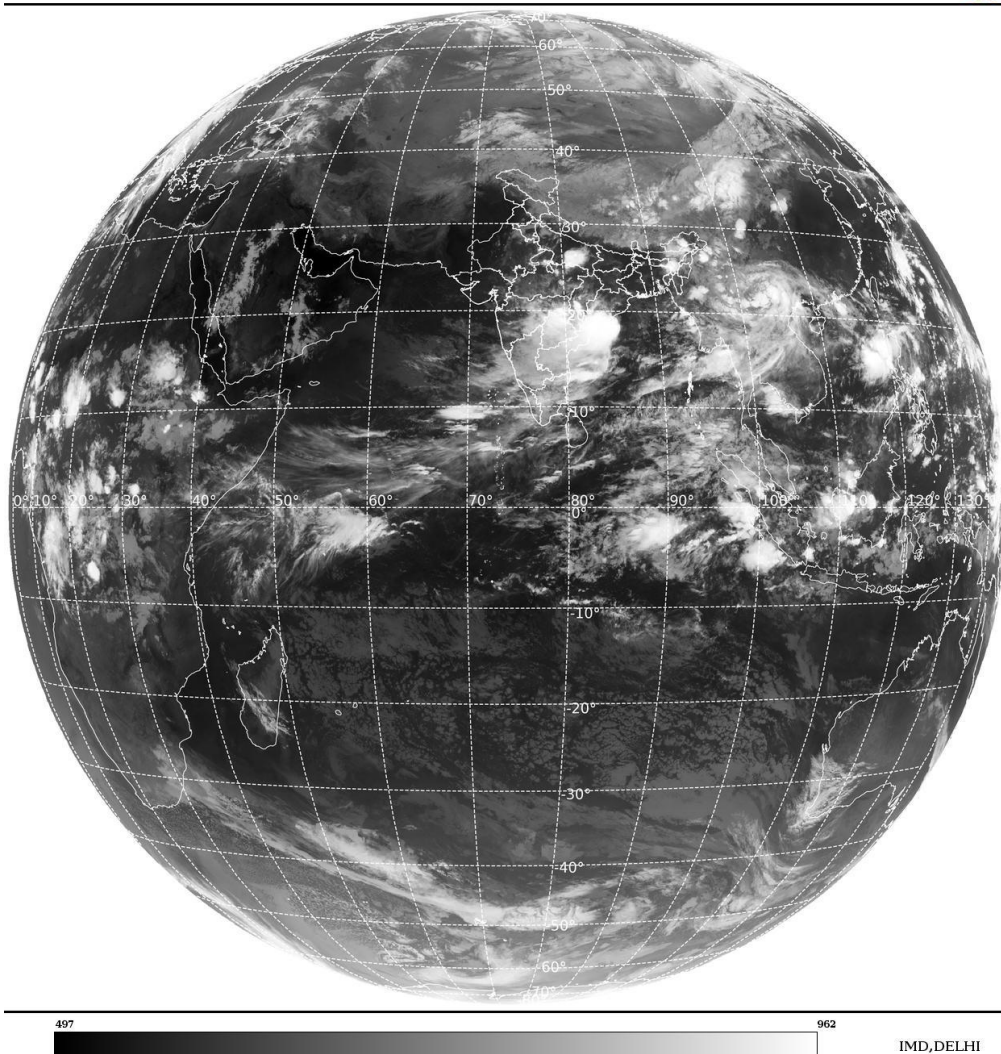
**BAY OF BENGAL & ANDAMAN SEA:-**

SCT TO BKN LOW/MED CLOUDS WITH EMBDD INT TO V INT CONVTN OVER NW ADJ WC BAY OFF S ORS - AP COASTS EC BAY NORTH ANDAMAN SEA GULF OF MARTABAN TENASSERIM COAST & ARAKAN COAST (.) SCT LOW/MED CLOUDS WITH EMBDD MOD TO INT CONVTN OVER REST BAY SOUTH ANDAMAN SEA (.)

**CLOUDS DESCRIPTION OUTSIDE INDIA:-**

SAT : INSAT-3DR IMG  
Thermal Infrared1 Count 10.8 um  
LIB FULL DISK

08-09-2024/(2145 to 2212) GMT  
09-09-2024/(0315 to 0342) IST



SCT LOW/MED CLOUDS WITH EMBDD MOD TO INT CONVTN OVER SRI LANKA PALK STR GULF OF MANNAR MALDIVES NEPAL BHUTAN TIBET CHINA EAST CHINA SEA TAIWAN MYANMAR THAILAND GULF OF THAILAND CAMBODIA LAOS VIETNAM GULF OF TONKIN HAINAN SUMATRA STR OF MALACCA MALAYSIA BORNEO SOUTH CHINA SEA JAVA ILS & SEA CELEBES ILS & SEA PHILIPPINES SULU SEA MADAGASCAR AND OVER INDIAN OCEAN BET LAT 5.0N TO 12.5S LONG 40.0E TO 110.0E (.)

TOO 09/0450 HRS IST=

NNNN

**LEGEND:-**

<b>REGION</b>	<b>NORTH</b>	<b>J&amp;K HP PJB HARY DLH UP UTRKND</b>
	<b>EAST</b>	<b>BHR JHRKND CHTGH OR WB SKM NORTH- EAST STATES</b>
	<b>WEST</b>	<b>RAJ MP GUJ MAHA GOA</b>
	<b>SOUTH</b>	<b>TLNGN AP KRNTK KER TN LKSDP ANDAMAN &amp; NICOBAR ILS</b>

<b>CLOUD DISTRIBUTION</b>	<b>ISOL</b>	<b>ISOLATED (LESS THAN 25%)</b>	
	<b>SCT</b>	<b>SCATTERED (25 TO 50%)</b>	
	<b>BKN</b>	<b>BROKEN (51 TO 75%)</b>	
	<b>SLD</b>	<b>SOLID (GREATER THAN 75%)</b>	
<b>CLOUDS TOP TEMPERATURE</b>	<b>CTT</b>	<b>CLOUD TOP TEMPERATURE</b>	
<b>CONVECTION</b>	<b>WK CONVTN</b>	<b>WEAK CONVECTION (CTT GREATER THAN -25°C)</b>	
	<b>MOD CONVTN</b>	<b>MODERATE CONVECTION (CTT BETWEEN -25°C TO -40°C)</b>	
	<b>INT CONVTN</b>	<b>INTENSE CONVECTION (CTT BETWEEN -41°C TO -70°C)</b>	
	<b>V INT CONVTN</b>	<b>VERY INTENSE CONVECTION (CTT LESS THAN -70°C)</b>	
<b>METEOROLOGICAL SUB- DIVISIONS, STATES &amp; UNION TERRITORIES</b>	<b>ARUPR</b>	<b>ARUNACHAL PRADESH</b>	
	<b>BHR</b>	<b>BIHAR</b>	
	<b>CHTGH</b>	<b>CHHATTISGARH</b>	
	<b>COTL AP</b>	<b>COASTAL ANDHRA PRADESH</b>	
	<b>COTL KRNTK</b>	<b>COASTAL KARNATAKA</b>	
	<b>COTL ORS</b>	<b>COASTAL ORISSA</b>	
	<b>GUJ</b>	<b>GUJARAT</b>	
	<b>GWB</b>	<b>GANGETIC WEST BENGAL</b>	
	<b>HARY</b>	<b>HARYANA</b>	
	<b>DLH</b>	<b>DELHI</b>	
	<b>HP</b>	<b>HIMACHAL PRADESH</b>	
	<b>J&amp;K</b>	<b>JAMMU AND KASHMIR</b>	
	<b>JHRKND</b>	<b>JHARKHAND</b>	
	<b>KER</b>	<b>KERALA</b>	
	<b>KKN</b>	<b>KONKAN</b>	
	<b>LKSDP</b>	<b>LAKSHADWEEP</b>	
	<b>M MAHA</b>	<b>MADHYA MAHARASHTRA</b>	
	<b>MAHA</b>	<b>MAHARASHTRA</b>	
	<b>MANI</b>	<b>MANIPUR</b>	
	<b>MEGHA</b>	<b>MEGHALAYA</b>	
	<b>MIZO</b>	<b>MIZORAM</b>	
	<b>MP</b>	<b>MADHYA PRADESH</b>	
		<b>MRTHWD</b>	<b>MARATHWADA</b>
		<b>NAGA</b>	<b>NAGALAND</b>
		<b>N COTL AP</b>	<b>NORTH COASTAL ANDHRA PRADESH</b>
		<b>NIK</b>	<b>NORTH INTERIOR KARNATAKA</b>
<b>ORS</b>		<b>ORISSA</b>	
<b>PJB</b>		<b>PUNJAB</b>	
<b>RAJ</b>		<b>RAJASTHAN</b>	
<b>RYLSM</b>		<b>RAYALASEEMA</b>	
<b>SAU &amp; KUTCH</b>		<b>SAURASHTRA &amp; KUTCH</b>	
<b>SHWB</b>		<b>SUB-HIMALAYAN WEST BENGAL</b>	
<b>SIK</b>		<b>SOUTH INTERIOR KARNATAKA</b>	
<b>SKM</b>		<b>SIKKIM</b>	

	<b>TLNGN</b>	<b>TELANGANA</b>
	<b>TN</b>	<b>TAMIL NADU</b>
	<b>TRP</b>	<b>TRIPURA</b>
	<b>UP</b>	<b>UTTAR PRADESH</b>
	<b>UTRKND</b>	<b>UTTARAKHAND</b>
	<b>VID</b>	<b>VIDHARBHA</b>
	<b>SHWB</b>	<b>SUB HIMALAYAN WEST BENGAL</b>
	<b>GWB</b>	<b>GANGETIC WEST BENGAL</b>
	<b>ARSEA</b>	<b>ARABIAN SEA</b>
	<b>ILS</b>	<b>ISLANDS</b>
<b>MISCELLANEOUS</b>	<b>ASSW</b>	<b>IN ASSOCIATION WITH</b>
	<b>ASSTD</b>	<b>ASSOCIATED</b>
	<b>LLC</b>	<b>LOW LEVEL CIRCULATION</b>
	<b>EMBDD</b>	<b>EMBEDDED</b>
	<b>N/HOOD</b>	<b>NEIGHBOURHOOD</b>
	<b>EXT</b>	<b>EXTREME</b>