



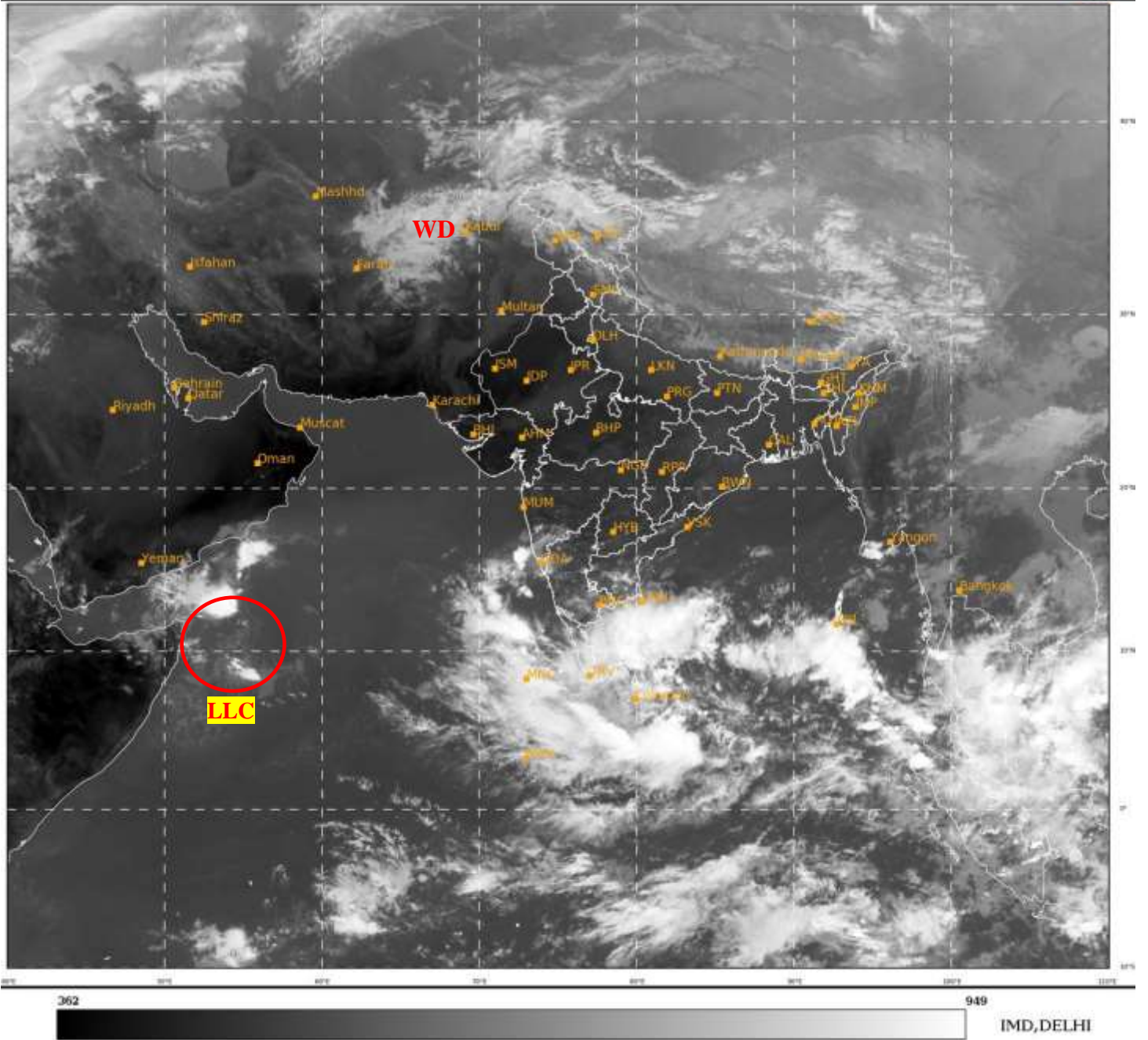
भारत मौसम विज्ञान विभाग
पृथ्वी विज्ञान मंत्रालय
India Meteorological Department
Ministry of Earth Sciences



SATELLITE BULLETIN BASED ON SATELLITE
IMAGERIES AND PRODUCTS
24.11.2021 TIME 0900 UTC

SAT : INSAT-3D IMG
IMG_TIR1 10.8 um
LIC Mercator

24-11-2021/(0900 to 0927) GMT
24-11-2021/(1430 to 1457) IST



TCIN50 DEMS 240900

SATELLITE BULLETIN BASED ON INSAT-3D PIC OF 240900 UTC (.)

REGION COVERED BETWEEN LAT 50.0°N TO 30.0°S AND LONG 40.0°E TO 125.0°E (.)

SALIENT FEATURES:-

LLC OVER SW ARSEA & N/HOOD:-

SCT LOW/MED CLOUDS WITH EMBDD INT TO V INT CONVTN OVER SW ADJ WC ARSEA BET LAT 9.0N TO 14.0N LONG 50.0E TO 56.0E IN ASSW LOW LEVEL CIRCULATION (LLC) OVER THE AREA (.) MINIMUM CTT MINUS 84 DEG C (.)

CONVECTION OVER SOUTH WEST BAY OFF EAST SRI LANKA COAST & N/HOOD:-

INTENSE CONVECTION OVER SW BAY OFF EAST SRI LANKA COAST & N/HOOD HAS INCREASED AND CONCENTRATED DURING LAST 06 HOURS (.) MINIMUM CTT MINUS 93 DEG C (.)

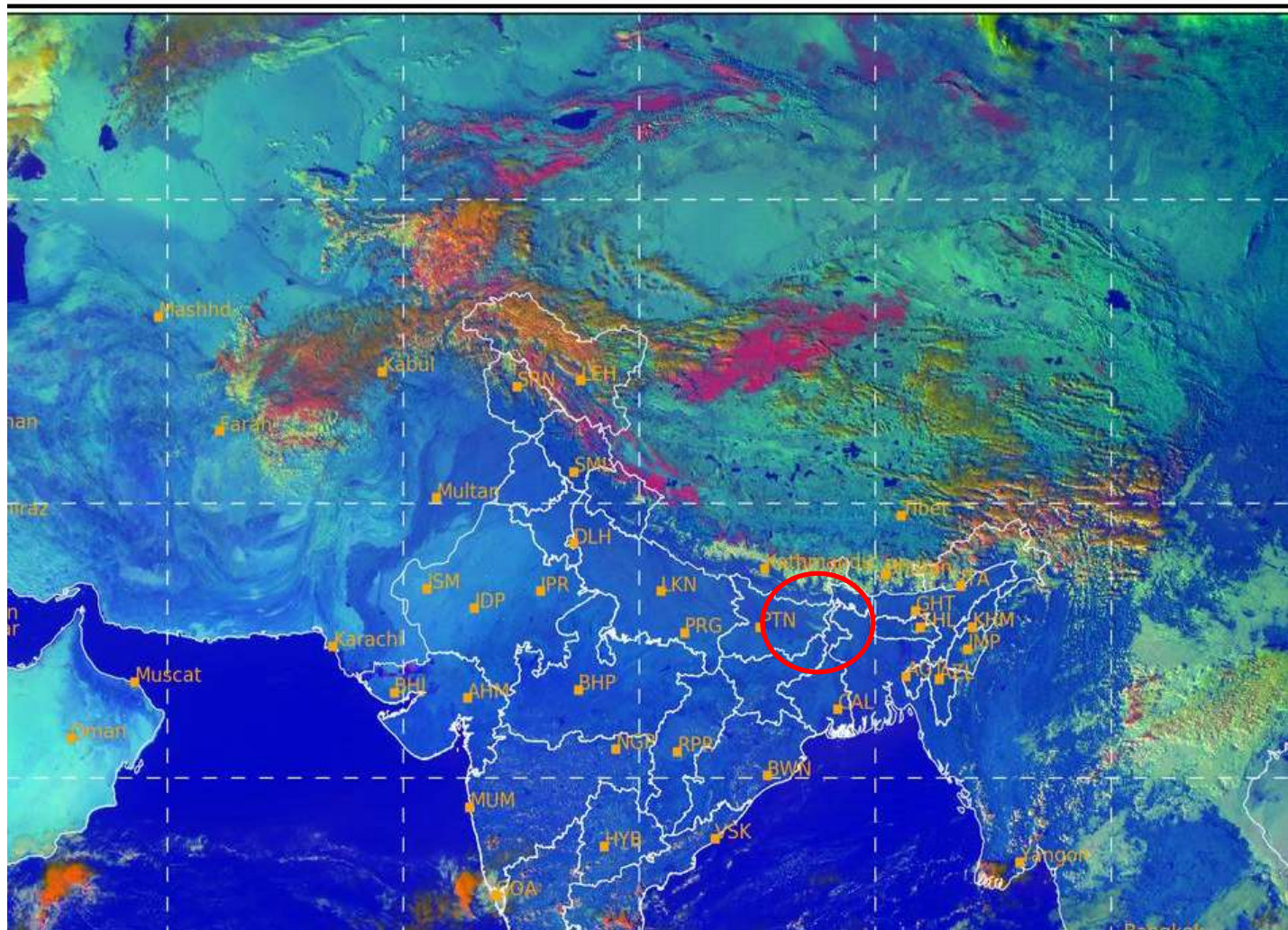
FOG/LOW CLOUDS:-

DAY MICROPHYSICS PRODUCT OF INSAT-3D AT 0900 UTC INDICATES FOG/LOW CLOUDS OVER NE BHR (.)

24-11-2021/(0900 to 0927) GMT

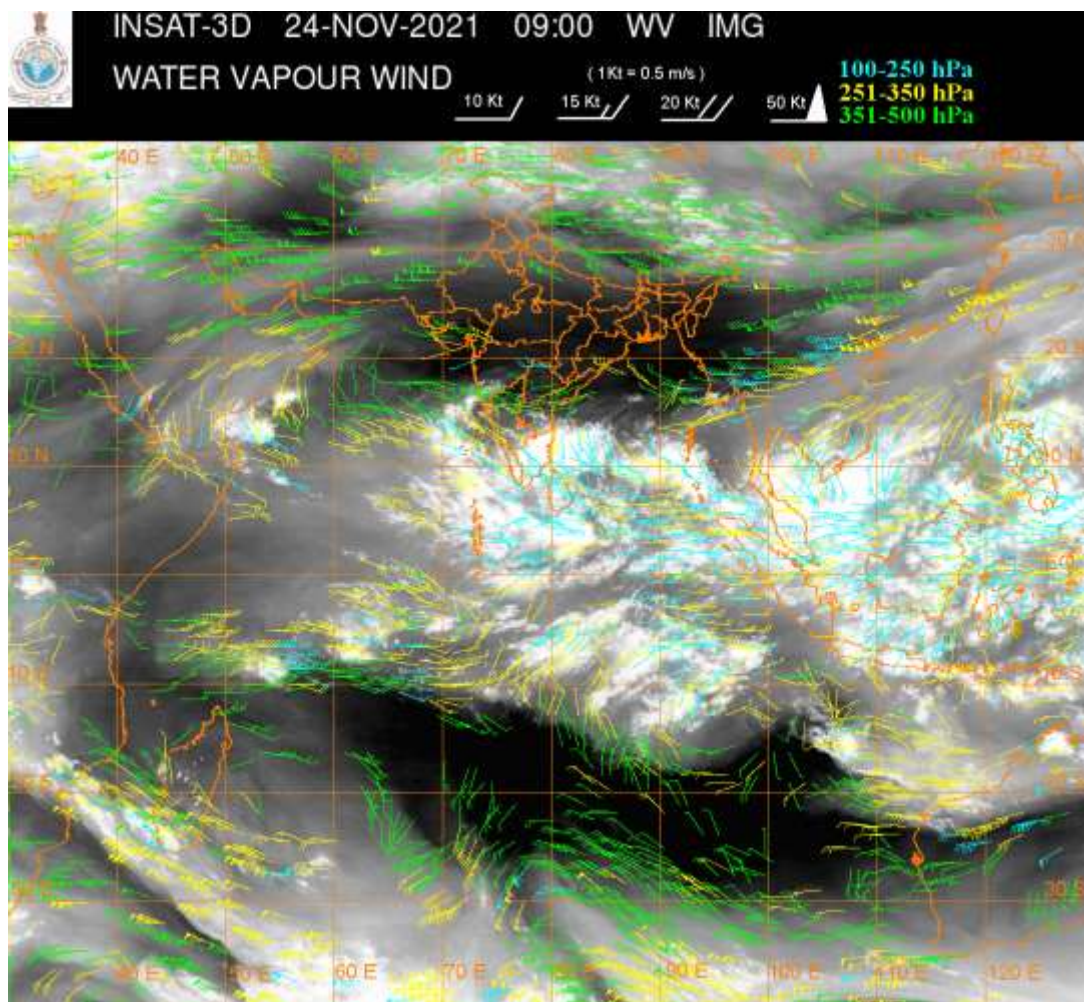
REFL (R), SWIR_REFL (G), TIR1_BT (B)

24-11-2021/(1430 to 1457) IST



WESTERN DISTURBANCE (WD):-

SCT MULTILAYERED CLOUDS OVER AFGAN EXT N PAK J&K LADAKH AND N/HOOD IN ASSW WD OVER THE AREA (.)



CLOUDS DESCRIPTION WITHIN INDIA:-

NORTH:-

SCT LOW/MED CLOUDS WITH EMBDD MOD TO INT CONVTN OVER LADAKH AND WK TO MOD CONVTN OVER J&K N HP N UTRKND (.) SCT LOW/MED CLOUDS OVER SE HP S UTRKND (.)

EAST:-

SCT LOW/MED CLOUDS WITH EMBDD WK TO MOD CONVTN OVER EXT N SHWB SKM ARUPR (.) SCT LOW/MED CLOUDS OVER NE BHR S JHRKND CHTGH ORS COTL GWB REST SHWB REST NE STATES (.)

WEST:-

SCT LOW/MED CLOUDS WITH EMBDD INT TO V INT CONVTN OVER S KKN (MINIMUM CTT MINUS 76 DEG C) (.) SCT LOW/MED CLOUDS WITH EMBDD MOD TO INT CONVTN OVER SOUTH MADHYA MAHA AND WK TO MOD CONVTN OVER GOA (.) SCT LOW/MED CLOUDS OVER SE GUJ S MP REST MAHA (.)

SOUTH:-

SCT TO BKN LOW/MED CLOUDS WITH EMBDD INT TO V INT CONVTN OVER E TN LKSDP ANDAMAN & NICOBAR ILS (MINIMUM CTT MINUS 93 DEG C) (.) SCT LOW/MED CLOUDS WITH EMBDD MOD TO INT CONVTN OVER NIK SIK EC RYLSM S COTL AP KER W TN (.) SCT LOW/MED CLOUDS WITH EMBDD WK TO MOD CONVTN OVER COTL KRNTK S TLNGN REST RYLSM N COTL AP (.) SCT LOW/MED CLOUDS OVER N TLNGN (.)

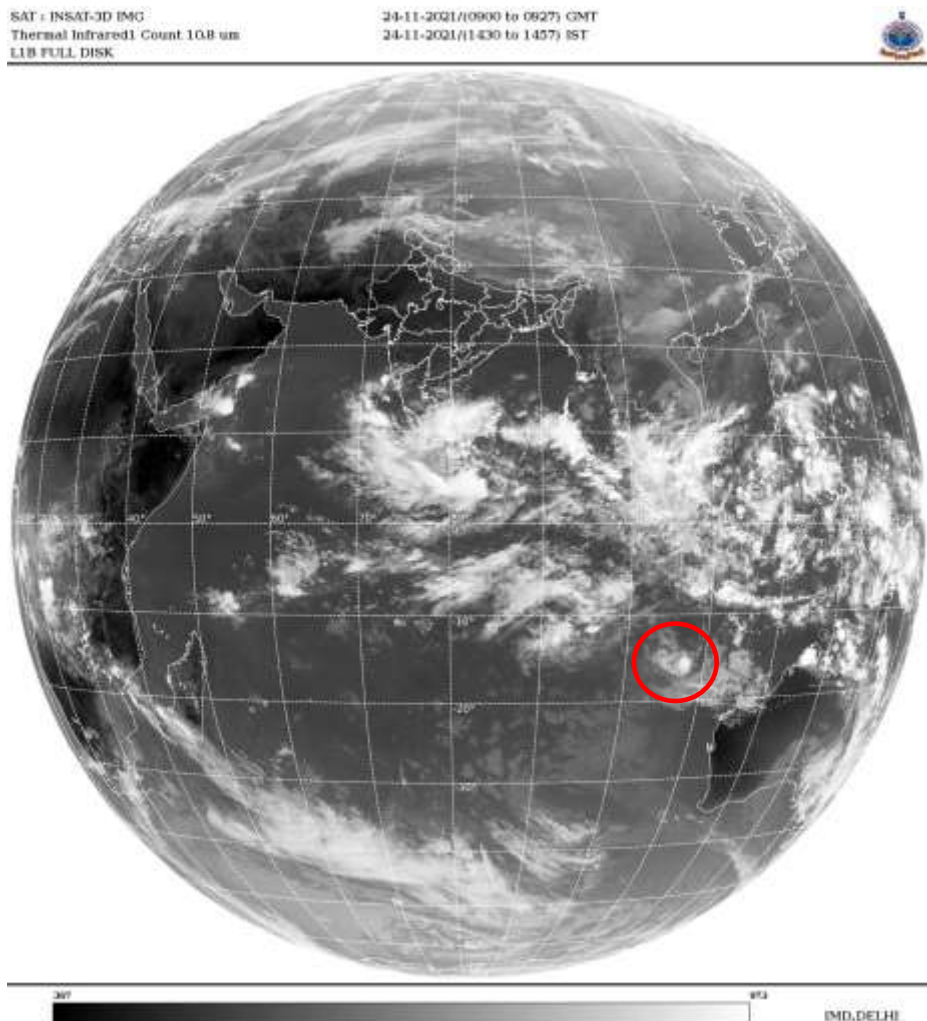
ARABIAN SEA:-

SCT TO BKN LOW/MED CLOUDS WITH EMBDD INT TO V INT CONVTN OVER CENTRAL ARSEA SOUTH ARSEA AND COMORIN (.)

BAY OF BENGAL & ANDAMAN SEA:-

SCT TO BKN LOW/MED CLOUDS WITH EMBDD INT TO V INT CONVTN OVER SOUTH BAY AND ANDAMAN SEA (.) SCT LOW/MED CLOUDS WITH EMBDD ISOL WK TO MOD CONVTN OVER CENTRAL BAY (.)

CLOUDS DESCRIPTION OUTSIDE INDIA:-



VORTEX (PADDY) OVER SOUTH INDIAN OCEAN:-

VORTEX (PADDY) OVER SOUTH INDIAN OCEAN CENTERED NEAR 14.3S / 106.5E (.) INTENSITY T1.5/2.0 (.) ASSTD SCT LOW/MED CLOUDS WITH EMBDD INT TO V INT CONVTN OVER THE AREA BET LAT 14.0S TO 17.0S LONG 106.0E TO 108.5E (.)

SCT LOW/MED CLOUDS WITH EMBDD MOD TO INT CONVTN OVER SRI LANKA GULF OF MANNAR PALK STR MALDIVES TIBET CHINA E CHINA SEA S MYANMAR S THAILAND GULF OF THAILAND CAMBODIA S VIETNAM SUMATRA STR OF MALACCA MALAYSIA SOUTH CHINA SEA BORNEO JAVA ILS & SEA CELEBES ILS & SEA PHILIPPINES SULU SEA MADAGASCAR MOZAMBIQUE CHANNEL AND OVER INDIAN OCEAN BET LAT 5.0N TO 14.5S EAST OF LONG 52.0E (.)

TOO 24/1545EF=

NNNN

LEGEND:-

REGION	NORTH	J&K HP PJB HARY DLH UP UTRKND
	EAST	BHR JHRKND CHTGH ORS WB SKM NORTH- EAST STATES
	WEST	RAJ MP GUJ MAHA GOA
	SOUTH	TLNGN AP KRNTK KER TN LKSDP ANDAMAN & NICOBAR ILS

CLOUD DISTRIBUTION	ISOL	ISOLATED (LESS THAN 25%)
	SCT	SCATTERED (25 TO 50%)
	BKN	BROKEN (51 TO 75%)
	SLD	SOLID (GREATER THAN 75%)
CLOUDS TOP TEMPERATURE	CTT	CLOUD TOP TEMPERATURE
CONVECTION	WK CONVTN	WEAK CONVECTION (CTT GREATER THAN -25°C)
	MOD CONVTN	MODERATE CONVECTION (CTT BETWEEN -25°C TO -40°C)
	INT CONVTN	INTENSE CONVECTION (CTT BETWEEN -41°C TO -70°C)
	V INT CONVTN	VERY INTENSE CONVECTION (CTT LESS THAN -70°C)
METEOROLOGICAL SUB-DIVISIONS, STATES & UNION TERRITORIES	ARUPR	ARUNACHAL PRADESH
	BHR	BIHAR
	CHTGH	CHHATTISGARH
	COTL AP	COASTAL ANDHRA PRADESH
	COTL KRNTK	COASTAL KARNATAKA
	COTL ORS	COASTAL ORISSA
	GUJ	GUJARAT

	GWB	GANGETIC WEST BENGAL
	HARY	HARYANA
	DLH	DELHI
	HP	HIMACHAL PRADESH
	J&K	JAMMU AND KASHMIR
	JHRKND	JHARKHAND
	KER	KERALA
	KKN	KONKAN
	LKSDP	LAKSHADWEEP
	M MAHA	MADHYA MAHARASHTRA
	MAHA	MAHARASHTRA
	MANI	MANIPUR
	MEGHA	MEGHALAYA
	MIZO	MIZORAM
	MP	MADHYA PRADESH
	MRTHWD	MARATHWADA
	NAGA	NAGALAND
	N COTL AP	NORTH COASTAL ANDHRA PRADESH
	NIK	NORTH INTERIOR KARNATAKA
	ORS	ORISSA
	PJB	PUNJAB
	RAJ	RAJASTHAN
	RYLSM	RAYALASEEMA
	SAU & KUTCH	SAURASHTRA & KUTCH
	SHWB	SUB-HIMALAYAN WEST BENGAL
	SIK	SOUTH INTERIOR KARNATAKA
	SKM	SIKKIM
	TLNGN	TELANGANA
	TN	TAMIL NADU
	TRP	TRIPURA
	UP	UTTAR PRADESH
	UTRKND	UTTARAKHAND
	VID	VIDHARBHA
	SHWB	SUB HIMALAYAN WEST BENGAL
	GWB	GANGETIC WEST BENGAL
	ARSEA	ARABIAN SEA
	ILS	ISLANDS
MISCELLANEOUS	ASSW	IN ASSOCIATION WITH
	ASSTD	ASSOCIATED
	LLC	LOW LEVEL CIRCULATION
	EMBDD	EMBEDDED
	N/HOOD	NEIGHBOURHOOD
	EXT	EXTREME