

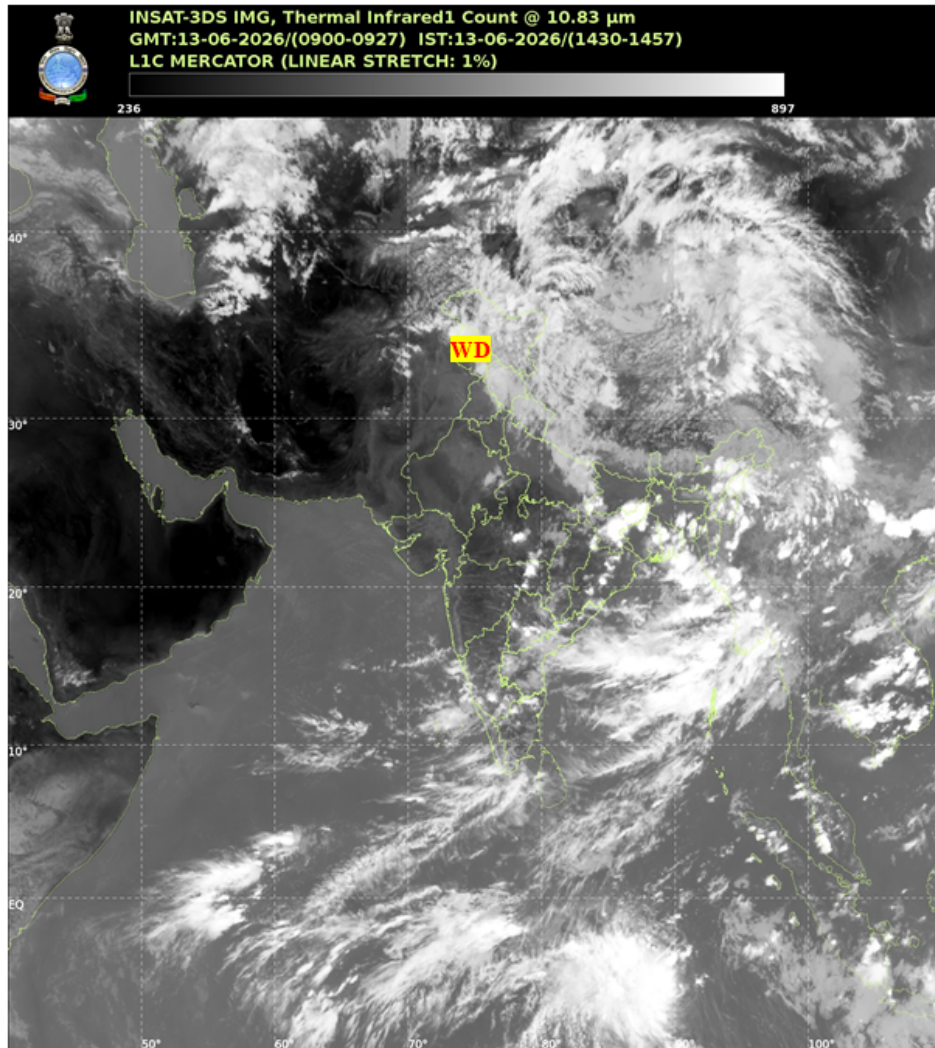


भारत मौसम विज्ञान विभाग  
पृथ्वी विज्ञान मंत्रालय  
India Meteorological Department  
Ministry of Earth Sciences



**SATELLITE BULLETIN BASED ON SATELLITE IMAGERIES AND PRODUCTS**

Date: 2026-06-13 Time: 09:00:00 UTC



TCIN50 DEMS 130900

SATELLITE BULLETIN BASED ON INSAT-3DS PIC OF 130900 UTC (.)

REGION COVERED BETWEEN LAT 50.0°N TO 35.0°S AND LONG 40.0°E TO 125.0°E (.)

**SALIENT FEATURES:**

**WESTERN DISTURBANCE (WD):-**

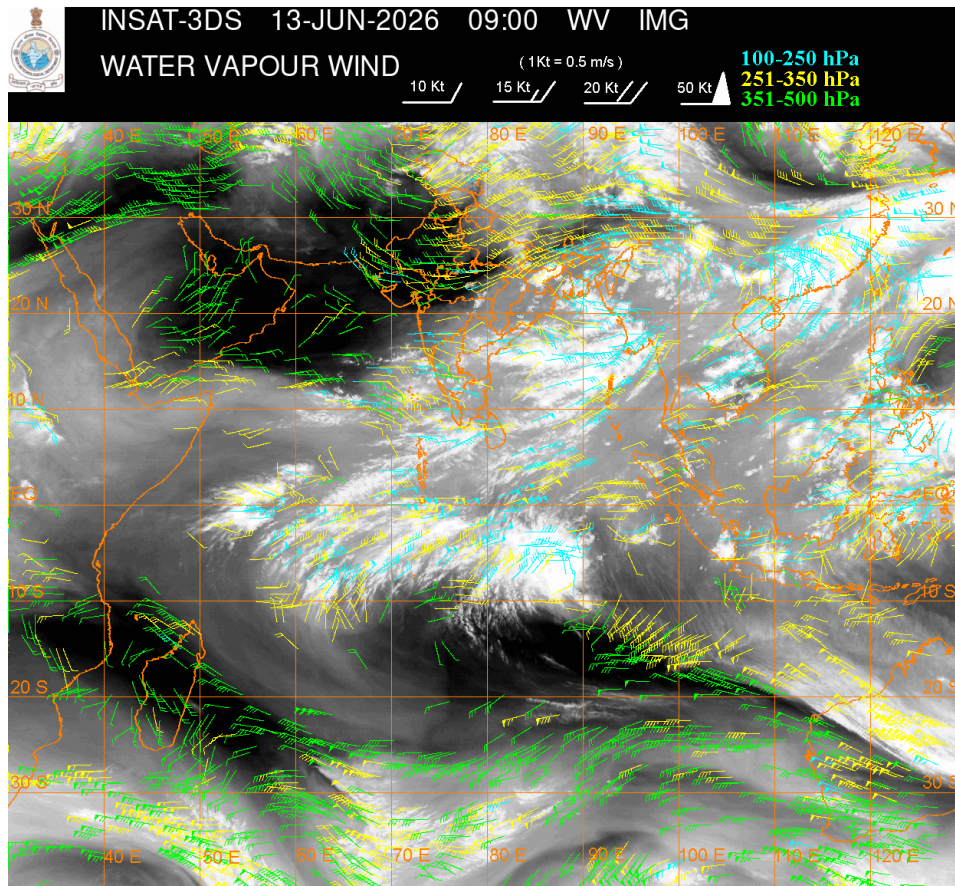
SCT TO BKN MULTILAYERED CLOUDS OVER NORTH PAK LADAKH J&K HP UTRKND PJB HARY DLH N RAJ NW MP UP AND N/HOOD IN ASSW WD OVER THE AREA (.)

**CONVECTIVE / THUNDERSTORM ACTIVITY:-**

INTENSE TO VERY INTENSE CONVECTIVE / THUNDERSTORM ACTIVITY OVER JHRKND GWB ORS

**ANDAMAN ILS AREA (MINIMUM CTT MINUS 70-90 DEGREE CELSIUS) (.)**

**MODERATE TO INTENSE CONVECTIVE / THUNDERSTORM ACTIVITY OVER LADAKH J&K HP  
UTRKND E UP BHR MP VID SIK COTL KRNTK KER TN TLNGN RYLSM COTL AP ASSAM NAGA MANI  
MIZO TRP BD LKSDP ILS AREA (MINIMUM CTT MINUS 40-70 DEGREE CELSIUS) (.)**



**CLOUD DESCRIPTION WITHIN INDIA:**

**NORTH:**

**SCT TO BKN LOW/MED CLOUDS WITH EMBDD MOD TO INT CONVTN OVER LADAKH J&K HP  
UTRKND E UP AND WK TO MOD CONVTN OVER PJB HARY DLH W UP (.)**

**EAST:**

**SCT TO BKN LOW/MED CLOUDS WITH EMBDD INT TO V INT CONVTN OVER JHRKND GWB ORS  
AND MOD TO INT CONVTN OVER S BHR CHTGH SKM SHWB NORTH-EAST STATES & BD (.)**

**WEST:**

**SCT TO BKN LOW/MED CLOUDS WITH EMBDD MOD TO INT CONVTN OVER MP VID AND WK TO  
MOD CONVTN OVER GOA REST MAHA E RAJ (.) SCT LOW/MED CLOUDS OVER W RAJ GUJ (.)**

**SOUTH:**

**SCT TO BKN LOW/MED CLOUDS WITH EMBDD INT TO V INT CONVTN OVER ANDAMAN ILS AREA  
(.) SCT TO BKN LOW/MED CLOUDS WITH EMBDD MOD TO INT CONVTN OVER SIK COTL KRNTK  
TLNGN RYLSM COTL AP KER TN LKSDP ILS AREA & NICOBAR ILS AREA AND WK TO MOD CONVTN  
OVER NIK (.)**

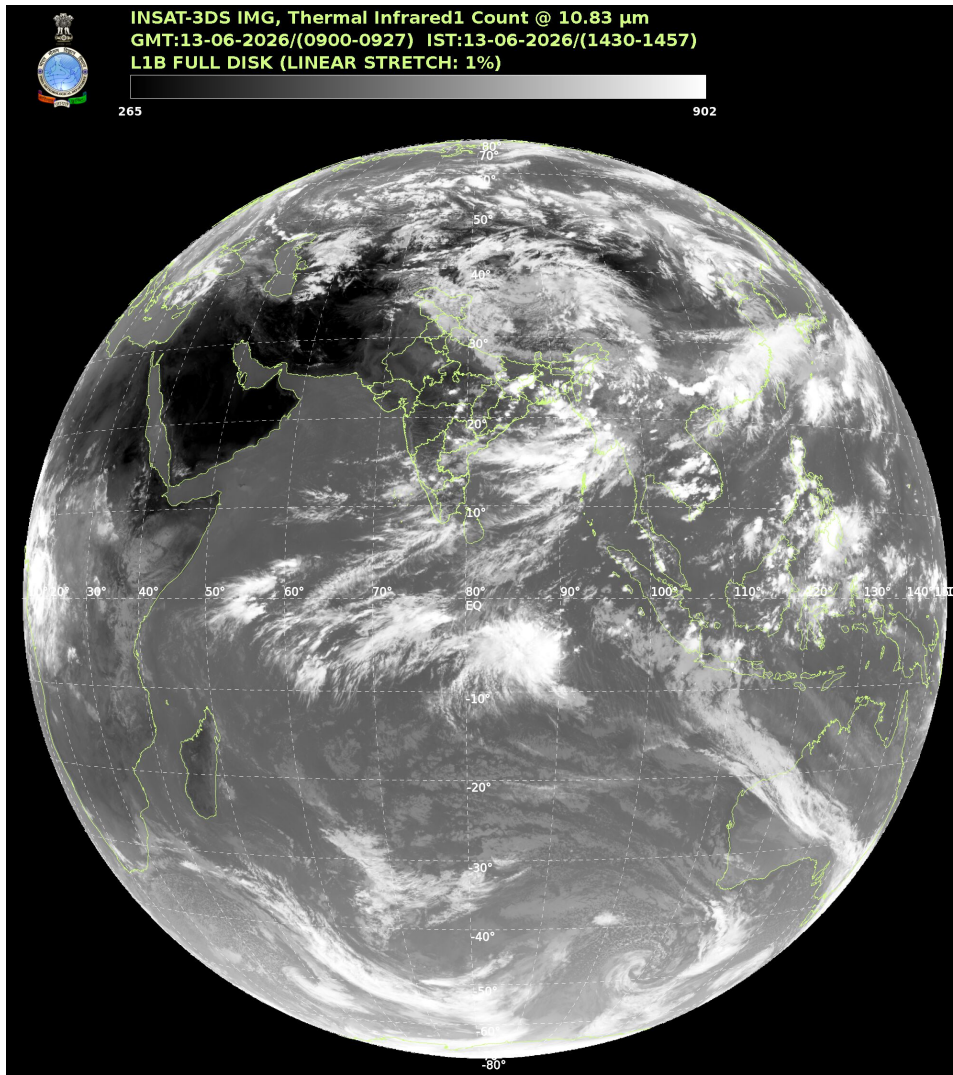
**ARABIAN SEA:**

**SCT LOW/MED CLOUDS WITH EMBDD MOD TO INT CONVTN OVER EC & SE ARSEA OFF GOA-  
KRNTK- KER COASTS AND LKSDP ILS AREA MALDIVES & COMORIN AREA (.)**

**BAY OF BENGAL & ANDAMAN SEA:**

**SCT TO BKN LOW/MED CLOUDS WITH EMBDD INT TO V INT CONVTN OVER NORTH AND CENTRAL BAY ANDAMAN SEA ARAKAN COAST GULF OF MARTABAN & TENASSERIM COAST (.)**

**CLOUD DESCRIPTION OUTSIDE INDIA:**



**SCT LOW/MED CLOUDS WITH EMBDD MOD TO INT CONVTN OVER SRI LANKA PALK STR GULF OF MANNAR MALDIVES AREA TIBET CHINA YELLOW SEA EAST CHINA SEA MYANMAR THAILAND GULF OF THAILAND CAMBODIA LAOS VIETNAM GULF OF TONKIN SUMATRA STR OF MALACCA MALAYSIA BORNEO SOUTH CHINA SEA JAVA ILS & SEA CELEBES ILS & SEA PHILIPPINES SULU SEA AND OVER INDIAN OCEAN BET LAT 5.0N TO 15.0S LONG 50.0E TO 115.0E AND BET LAT 25.0S TO 35.0S LONG 40.0E TO 80.0E (.)**

**T00 13/1530 HRS IST**

**NNNN**

**LEGEND**

| REGION |   |
|--------|---|
| NORTH  | J&K HP UTRKND PJB HARY DLH UP                 |
| EAST   | BHR JHRKND CHTGH ORS WB SKM NORTH-EAST STATES |
| WEST   | RAJ MP GUJ MAHA GOA                           |

|   |  |
|---|--|
| <b>SOUTH</b>  | <b>TLNGN AP KRNTK KER TN LKSDP ANDAMAN &amp; NICOBAR ILS</b> |
| <b>CLOUD DISTRIBUTION</b>   |  |
| <b>ISOL</b>   | <b>ISOLATED (LESS THAN 25%)</b>                              |
| <b>SCT</b>  | <b>SCATTERED (25 TO 50%)</b>                                 |
| <b>BKN</b>  | <b>BROKEN (51 TO 75%)</b>                                    |
| <b>SLD</b>  | <b>SOLID (GREATER THAN 75%)</b>                              |
| <b>CLOUDS TOP TEMPERATURE</b>                                       |  |
| <b>CTT</b>  | <b>CLOUD TOP TEMPERATURE</b>                                 |
| <b>CONVECTION</b>   |  |
| <b>WK CONVTN</b>  | <b>WEAK CONVECTION (CTT GREATER THAN -25°C)</b>              |
| <b>MOD CONVTN</b>   | <b>MODERATE CONVECTION (CTT BETWEEN -25°C TO -40°C)</b>      |
| <b>INT CONVTN</b>   | <b>INTENSE CONVECTION (CTT BETWEEN -41°C TO -70°C)</b>       |
| <b>V INT CONVTN</b>   | <b>VERY INTENSE CONVECTION (CTT LESS THAN -70°C)</b>         |
| <b>METEOROLOGICAL SUB-DIVISIONS, STATES &amp; UNION TERRITORIES</b> |  |
| <b>J&amp;K</b>  | <b>JAMMU AND KASHMIR</b>                                     |
| <b>HP</b>   | <b>HIMACHAL PRADESH</b>                                      |
| <b>UTRKND</b>   | <b>UTTARAKHAND</b>   |
| <b>PJB</b>  | <b>PUNJAB</b>  |
| <b>HARY</b>   | <b>HARYANA</b>   |
| <b>DLH</b>  | <b>DELHI</b>   |
| <b>BHR</b>  | <b>BIHAR</b>   |
| <b>JHRKND</b>   | <b>JHARKHAND</b>   |
| <b>CHTGH</b>  | <b>CHHATTISGARH</b>  |
| <b>ORS</b>  | <b>ORISSA</b>  |
| <b>GWB</b>  | <b>GANGETIC WEST BENGAL</b>                                  |
| <b>SHWB</b>   | <b>SUB-HIMALAYAN WEST BENGAL</b>                             |
| <b>SKM</b>  | <b>SIKKIM</b>  |
| <b>ARUPR</b>  | <b>ARUNACHAL PRADESH</b>                                     |
| <b>ASSAM</b>  | <b>ASSAM</b>   |
| <b>MEGHA</b>  | <b>MEGHALAYA</b>   |
| <b>MANI</b>   | <b>MANIPUR</b>   |
| <b>MIZO</b>   | <b>MIZORAM</b>   |
| <b>TRP</b>  | <b>TRIPURA</b>   |
| <b>RAJ</b>  | <b>RAJASTHAN</b>   |

|                        |                                 |
|------------------------|---------------------------------|
| <b>MP</b>              | <b>MADHYA PRADESH</b>           |
| <b>GUJ</b>             | <b>GUJARAT</b>                  |
| <b>SAU &amp; KUTCH</b> | <b>SAURASHTRA &amp; KUTCH</b>   |
| <b>MAHA</b>            | <b>MAHARASHTRA</b>              |
| <b>M MAHA</b>          | <b>MADHYA MAHARASHTRA</b>       |
| <b>MRTHWD</b>          | <b>MARATHWADA</b>               |
| <b>VID</b>             | <b>VIDARBHA</b>                 |
| <b>KKN</b>             | <b>KONKAN</b>                   |
| <b>TLNGN</b>           | <b>TELANGANA</b>                |
| <b>RYLSM</b>           | <b>RAYALSEEMA</b>               |
| <b>COTL AP</b>         | <b>COASTAL ANDHRA PRADESH</b>   |
| <b>NIK</b>             | <b>NORTH INTERIOR KARNATAKA</b> |
| <b>SIK</b>             | <b>SOUTH INTERIOR KARNATAKA</b> |
| <b>COTL KRNTK</b>      | <b>COASTAL KARNATAKA</b>        |
| <b>KER</b>             | <b>KERALA</b>                   |
| <b>TN</b>              | <b>TAMILNADU</b>                |
| <b>LKSDP</b>           | <b>LAKSHADWEEP</b>              |
| <b>ILS</b>             | <b>ISLANDS</b>                  |
| <b>ARSEA</b>           | <b>ARABIAN SEA</b>              |
| <b>MISCELLANEOUS</b>   |                                 |
| <b>ASSW</b>            | <b>IN ASSOCIATION WITH</b>      |
| <b>ASSTD</b>           | <b>ASSOCIATED</b>               |
| <b>LLC</b>             | <b>LOW LEVEL CIRCULATION</b>    |
| <b>EMBDD</b>           | <b>EMBEDDED</b>                 |
| <b>N/HOOD</b>          | <b>NEIGHBOURHOOD</b>            |
| <b>EXT</b>             | <b>EXTREME</b>                  |