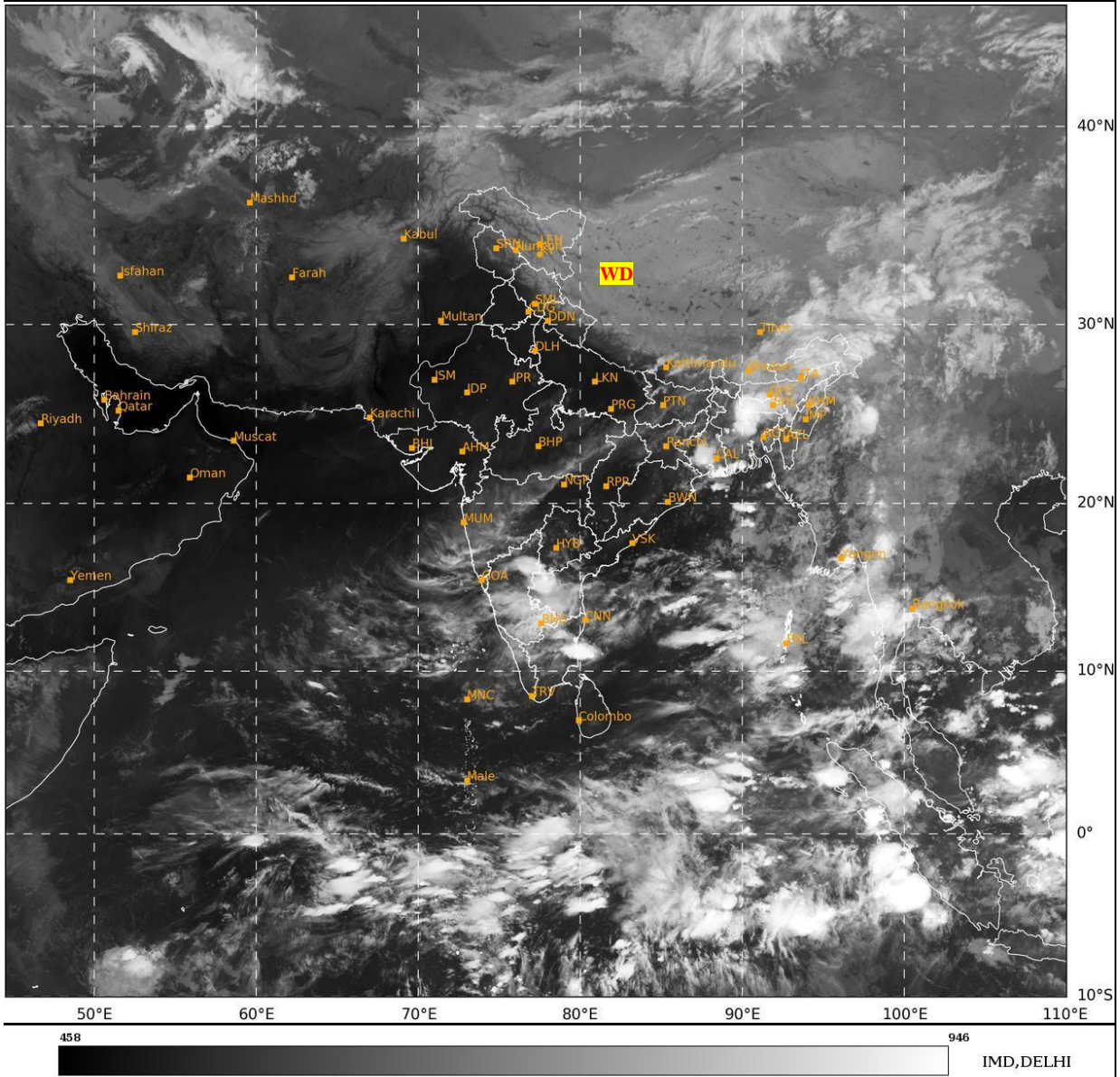




**SATELLITE BULLETIN BASED ON SATELLITE
IMAGERIES AND PRODUCTS**
03.10.2024 TIME 2100 UTC

SAT : INSAT-3DR IMG
IMG_TIR1 10.8 um
LIC Mercator

03-10-2024/(2045 to 2112) GMT
04-10-2024/(0215 to 0242) IST



TCIN50 DEMS 032100

SATELLITE BULLETIN BASED ON INSAT-3DR PIC OF 032045 UTC (.)

REGION COVERED BETWEEN LAT 50.0°N TO 35.0°S AND LONG 40.0°E TO 125.0°E (.)

SALIENT FEATURES:-

CONVECTION OVER NORTH BAY & N/HOOD:-

MODERATE TO INTENSE CONVTN OVER NORTH BAY AND N/HOOD PERSISTS (MINIMUM **CTT MINUS 60-70 DEG CEL**) (.)

WESTERN DISTURBANCE (WD):-

SCT MULTILAYERED CLOUDS OVER LADAKH TIBET ADJ CHINA IN ASSW **WD** OVER THE AREA (.)

CONVECTIVE / THUNDERSTORM ACTIVITY:-

INTENSE TO VERY INTENSE CONVECTIVE / THUNDERSTORM ACTIVITY OBSERVED W RYLSM NE TN ANDAMAN ILS (MINIMUM **CTT MINUS 70-90 DEG CEL**) (.)

MODERATE TO INTENSE CONVECTIVE / THUNDERSTORM ACTIVITY OBSERVED OVER GWB KRNTK RYLSM NE STATES BD (MINIMUM **CTT MINUS 50-60 DEG CEL**) (.)



INSAT-3DR 03-OCT-2024 16:45 WV IMG

WATER VAPOUR WIND

(1Kt = 0.5 m/s)

10 Kt

15 Kt

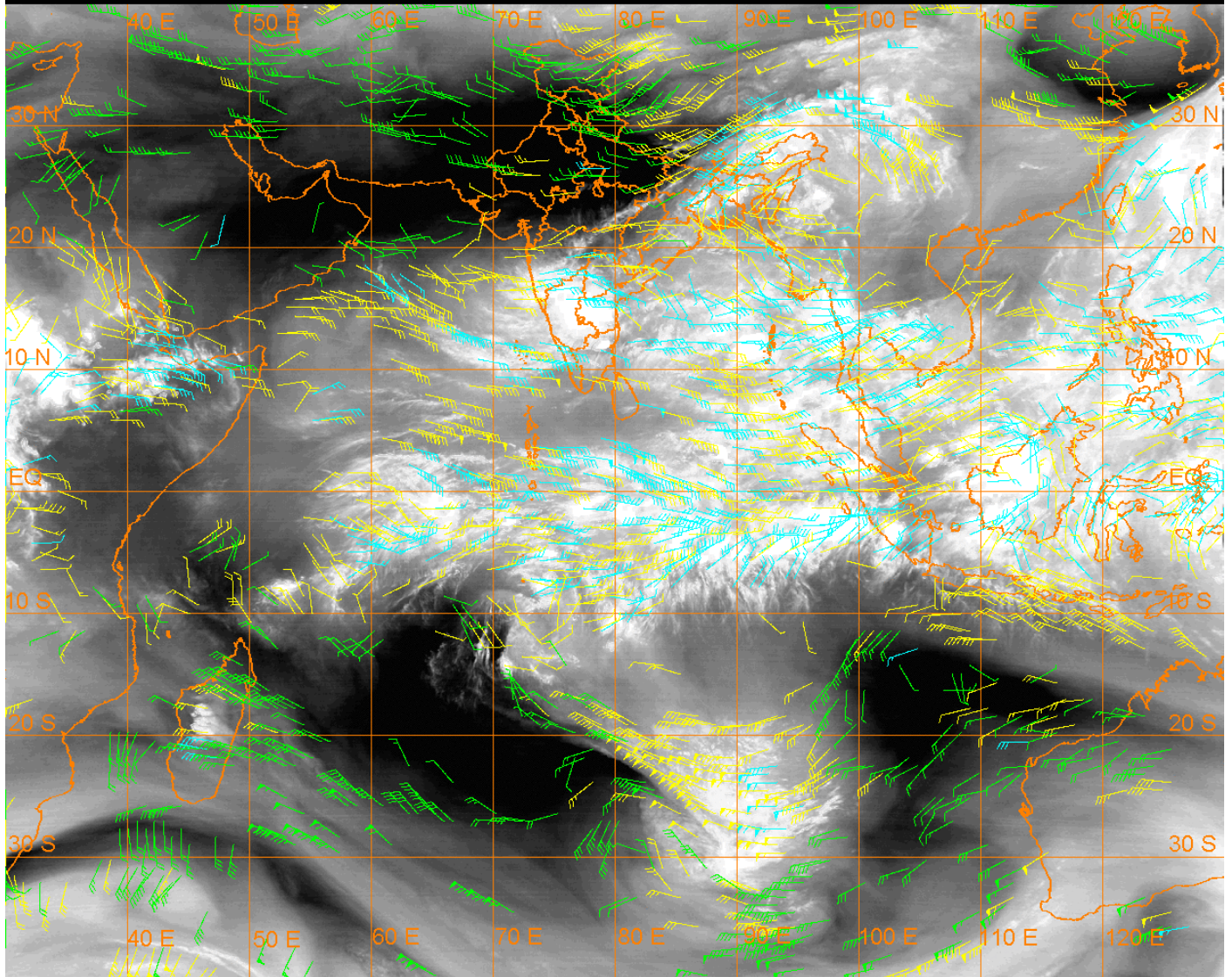
20 Kt

50 Kt

100-250 hPa

251-350 hPa

351-500 hPa



CLOUDS DESCRIPTION WITHIN INDIA:-

NORTH:-

SCT LOW/MED CLOUDS WITH EMBDD ISOL WK CONVTN OVER LADAKH (.) ISOL TO SCT LOW/MED CLOUDS OVER J&K HP UTRKND UP (.)

EAST:-

SCT LOW/MED CLOUDS WITH EMBDD MOD TO INT CONVTN OVER GWB BD NE STATES AND WK TO MOD CONVTN OVER JHRKND COTL ORS SKM SHWB (.) SCT LOW/MED CLOUDS OVER BHR CHTGH REST ORS (.)

WEST:-

SCT LOW/MED CLOUDS WITH EMBDD WK TO MOD CONVTN OVER MAHA GOA (.) ISOL TO SCT LOW/MED CLOUDS OVER RAJ MP GUJ (.)

SOUTH:-

SCT LOW/MED CLOUDS WITH EMBDD INT TO V INT CONVTN OVER W RYLSM NE TN ANDAMAN ILS (.) SCT LOW/MED CLOUDS WITH EMBDD MOD TO INT CONVTN OVER KRNTK E RYLSM LKSDP & NICOBAR ILS AND WK TO MOD CONVTN OVER TLNGN COTL AP KER REST TN (.)

ARABIAN SEA:-

SCT LOW/MED CLOUDS WITH EMBDD MOD TO INT CONVTN OVER EC & SE ARSEA LKSDP ILS AREA MALDIVES AREA (.)

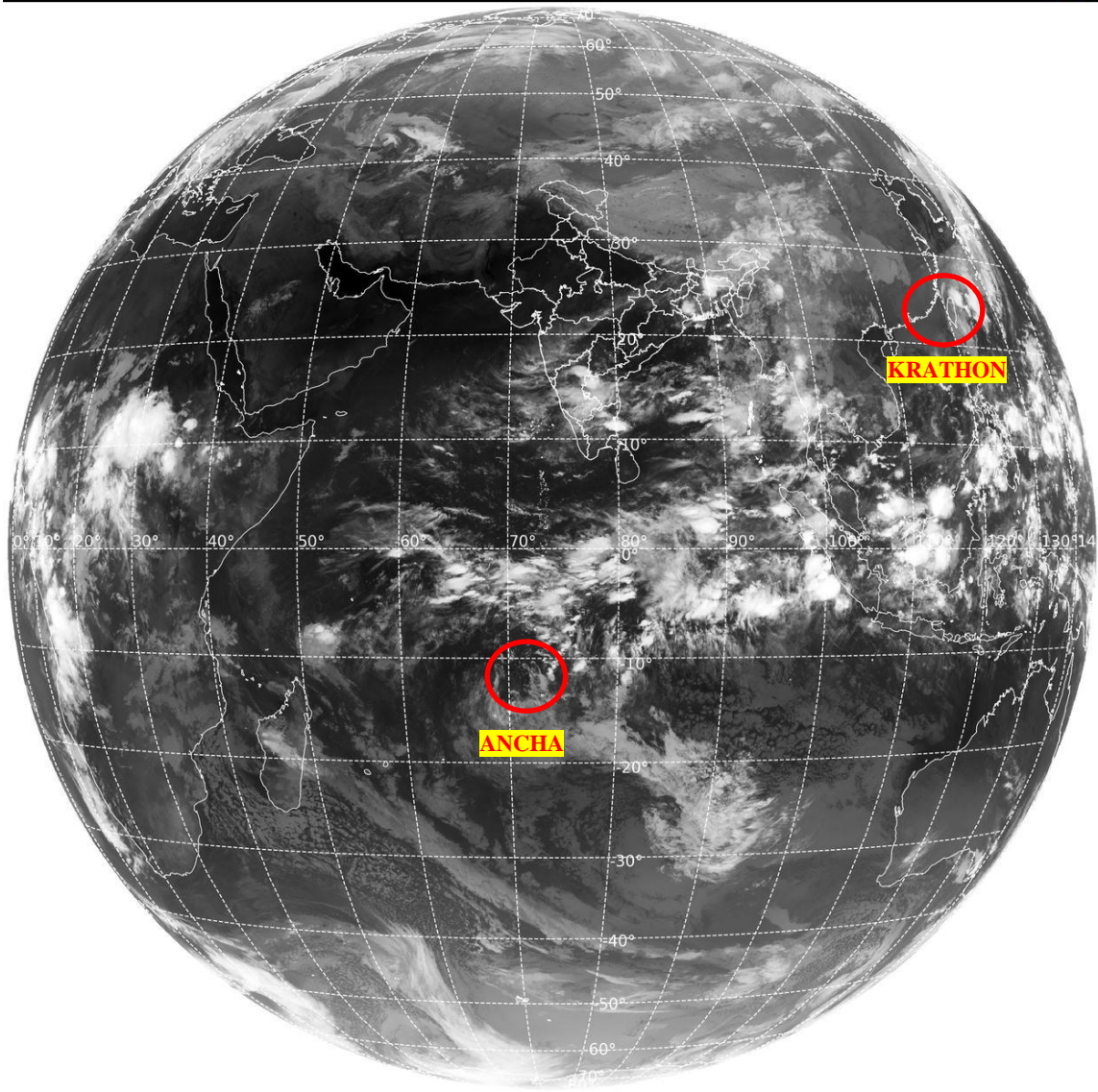
BAY OF BENGAL & ANDAMAN SEA:-

SCT TO BKN LOW/MED CLOUDS WITH EMBDD INT TO V INT CONVTN OVER SE BAY ANDAMAN SEA (MINIMUM **CTT MINUS 70-90 DEG CEL**) (.) SCT LOW/MED CLOUDS WITH EMBDD MOD TO INT CONVTN OVER REST BAY (.)

CLOUDS DESCRIPTION OUTSIDE INDIA:-

SAT : INSAT-3DR IMG
Thermal Infrared1 Count 10.8 um
L1B FULL DISK

03-10-2024/(2045 to 2112) GMT
04-10-2024/(0215 to 0242) IST



458

951

IMD,DELHI

VORTEX (KRATHON) OVER TAIWAN AND N/HOOD :-

VORTEX (**KRATHON**) OVER TAIWAN AND N/HOOD (**AREA F05**) CENTERED NEAR **23.0N / 121.3E** (.) **OVERLAND** (.) ASSTD SCT TO BKN LOW/MED CLOUDS WITH EMBDD INT TO V INT CONVTN OVER TAIWAN & EAST CHINA SEA (.)

VORTEX (ANCHA) OVER SOUTH INDIAN OCEAN:-

VORTEX (**ANCHA**) OVER SOUTH INDIAN OCEAN (**AREA E80**) CENTERED NEAR **14.0S / 69.1E** (.) INTENSITY **T1.5/1.5** (.) MAXIMUM SUSTAINED WINDS OF **17-27 KTS** (.) ASSTD SCT TO BKN LOW/MED CLOUDS WITH EMBDD MOD TO INT CONVTN OVER AREA BET LAT 11.0S TO 16.0S LONG 70.0E TO 80.0E (.)

SCT LOW/MED CLOUDS WITH EMBDD MOD TO INT CONVTN OVER SRI LANKA MALDIVES NEPAL BHUTAN TIBET CHINA EAST CHINA SEA TAIWAN MYANMAR THAILAND GULF OF THAILAND CAMBODIA LAOS VIETNAM SUMATRA STR OF MALACCA MALAYSIA BORNEO SOUTH CHINA SEA JAVA ILS & SEA CELEBES ILS & SEA PHILIPPINES SULU SEA MADAGASCAR AND OVER INDIAN OCEAN BET LAT 5.0N TO 32.0S LONG 50.0E TO 110.0E (.)

TOO 04/0440 HRS IST=

NNNN

LEGEND:-

REGION	NORTH	J&K HP PJB HARY DLH UP UTRKND	
	EAST	BHR JHRKND CHTGH ORS WB SKM NORTH- EAST STATES	
	WEST	RAJ MP GUJ MAHA GOA	
	SOUTH	TLNGN AP KRNTK KER TN LKSDP ANDAMAN & NICOBAR ILS	
CLOUD DISTRIBUTION	ISOL	ISOLATED (LESS THAN 25%)	
	SCT	SCATTERED (25 TO 50%)	
	BKN	BROKEN (51 TO 75%)	
	SLD	SOLID (GREATER THAN 75%)	
CLOUDS TOP TEMPERATURE	CTT	CLOUD TOP TEMPERATURE	
CONVECTION	WK CONVTN	WEAK CONVECTION (CTT GREATER THAN -25°C)	
	MOD CONVTN	MODERATE CONVECTION (CTT BETWEEN -25°C TO -40°C)	
	INT CONVTN	INTENSE CONVECTION (CTT BETWEEN -41°C TO -70°C)	
	V INT CONVTN	VERY INTENSE CONVECTION (CTT LESS THAN -70°C)	
METEOROLOGICAL SUB- DIVISIONS, STATES & UNION TERRITORIES	ARUPR	ARUNACHAL PRADESH	
	BHR	BIHAR	
	CHTGH	CHHATTISGARH	
	COTL AP	COASTAL ANDHRA PRADESH	
	COTL KRNTK	COASTAL KARNATAKA	
	COTL ORS	COASTAL ORISSA	
	GUJ	GUJARAT	
	GWB	GANGETIC WEST BENGAL	
	HARY	HARYANA	
	DLH	DELHI	
	HP	HIMACHAL PRADESH	
	J&K	JAMMU AND KASHMIR	
	JHRKND	JHARKHAND	
	KER	KERALA	
	KKN	KONKAN	
	LKSDP	LAKSHADWEEP	
	M MAHA	MADHYA MAHARASHTRA	
	MAHA	MAHARASHTRA	
	MANI	MANIPUR	
	MEGHA	MEGHALAYA	
	MIZO	MIZORAM	
	MP	MADHYA PRADESH	
		MRTHWD	MARATHWADA
		NAGA	NAGALAND
N COTL AP		NORTH COASTAL ANDHRA PRADESH	
NIK		NORTH INTERIOR KARNATAKA	
ORS		ORISSA	

	PJB	PUNJAB
	RAJ	RAJASTHAN
	RYLSM	RAYALASEEMA
	SAU & KUTCH	SAURASHTRA & KUTCH
	SHWB	SUB-HIMALAYAN WEST BENGAL
	SIK	SOUTH INTERIOR KARNATAKA
	SKM	SIKKIM
	TLNGN	TELANGANA
	TN	TAMIL NADU
	TRP	TRIPURA
	UP	UTTAR PRADESH
	UTRKND	UTTARAKHAND
	VID	VIDHARBHA
	SHWB	SUB HIMALAYAN WEST BENGAL
	GWB	GANGETIC WEST BENGAL
	ARSEA	ARABIAN SEA
	ILS	ISLANDS
MISCELLANEOUS	ASSW	IN ASSOCIATION WITH
	ASSTD	ASSOCIATED
	LLC	LOW LEVEL CIRCULATION
	EMBDD	EMBEDDED
	N/HOOD	NEIGHBOURHOOD
	EXT	EXTREME