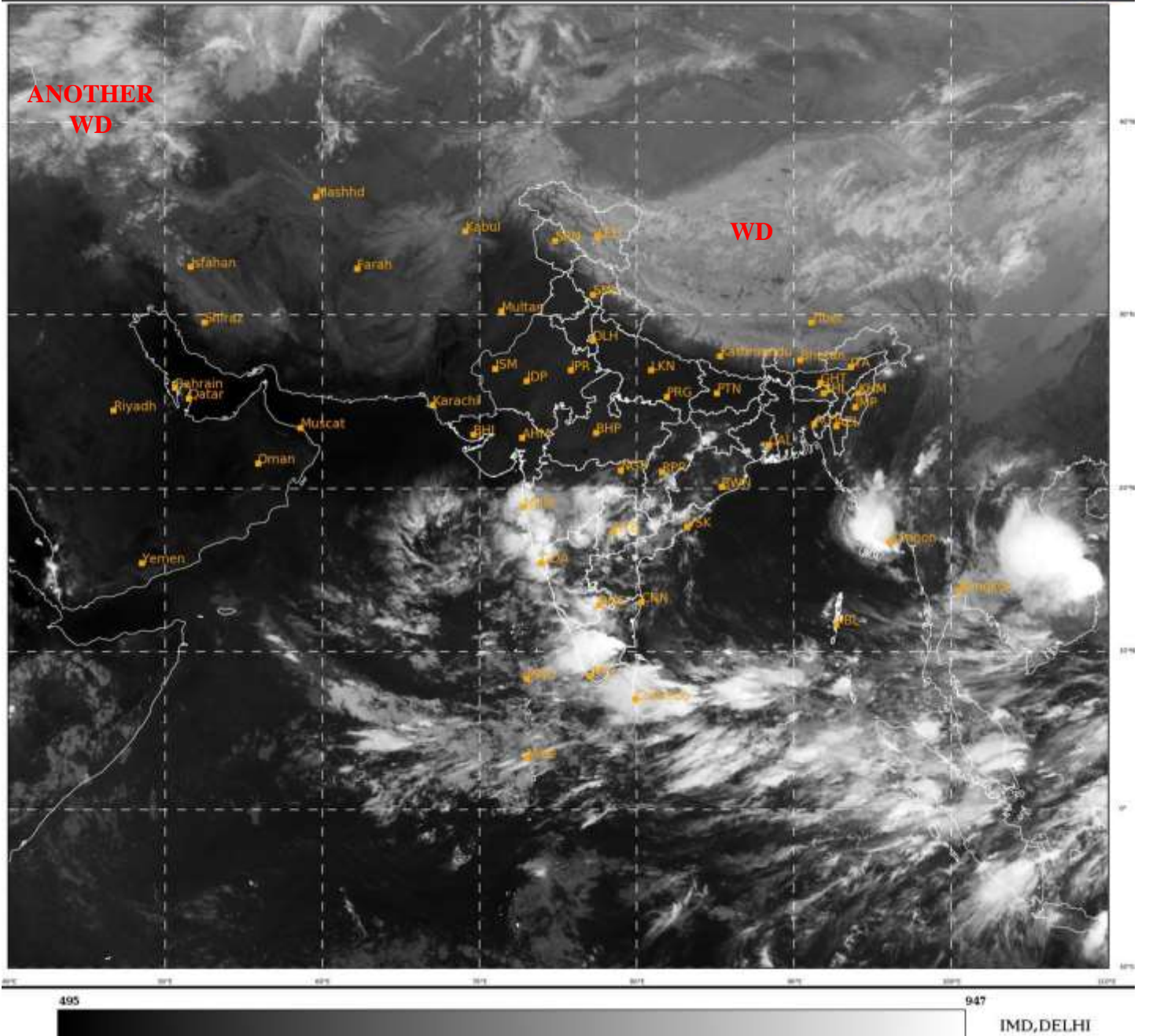




**SATELLITE BULLETIN BASED ON SATELLITE
IMAGERIES AND PRODUCTS**
14.10.2022 TIME 1500 UTC

SAT : INSAT-3D IMG
IMG_TIR1 10.8 um
LIC Mercator

14-10-2022/(1500 to 1526) GMT
14-10-2022/(2030 to 2056) IST



TCIN50 DEMS 141500

SATELLITE BULLETIN BASED ON INSAT-3D PIC OF 141500 UTC (.)

REGION COVERED BETWEEN LAT 50.0°N TO 35.0°S AND LONG 40.0°E TO 125.0°E (.)

SALIENT FEATURES:-

WESTERN DISTURBANCE (WD):-

SCT MULTILAYERED CLOUDS OVER TIBET ADJ CHINA IN ASSW **WD** OVER THE AREA (.)

SCT MULTILAYERED CLOUDS OVER CASPIAN SEA AND N/HOOD IN ASSW **ANOTHER WD** OVER THE AREA (.)

INTENSE CONVECTIVE CLOUDS:-

INTENSE CONVECTIVE CLOUDS OBSERVED OVER MAHA GOA KRNTK TLNGN KER TN & NICOBAR ILS (.)



INSAT-3DR 14-OCT-2022 15:15 WV IMG

WATER VAPOUR WIND

(1Kt = 0.5 m/s)

10 Kt

15 Kt

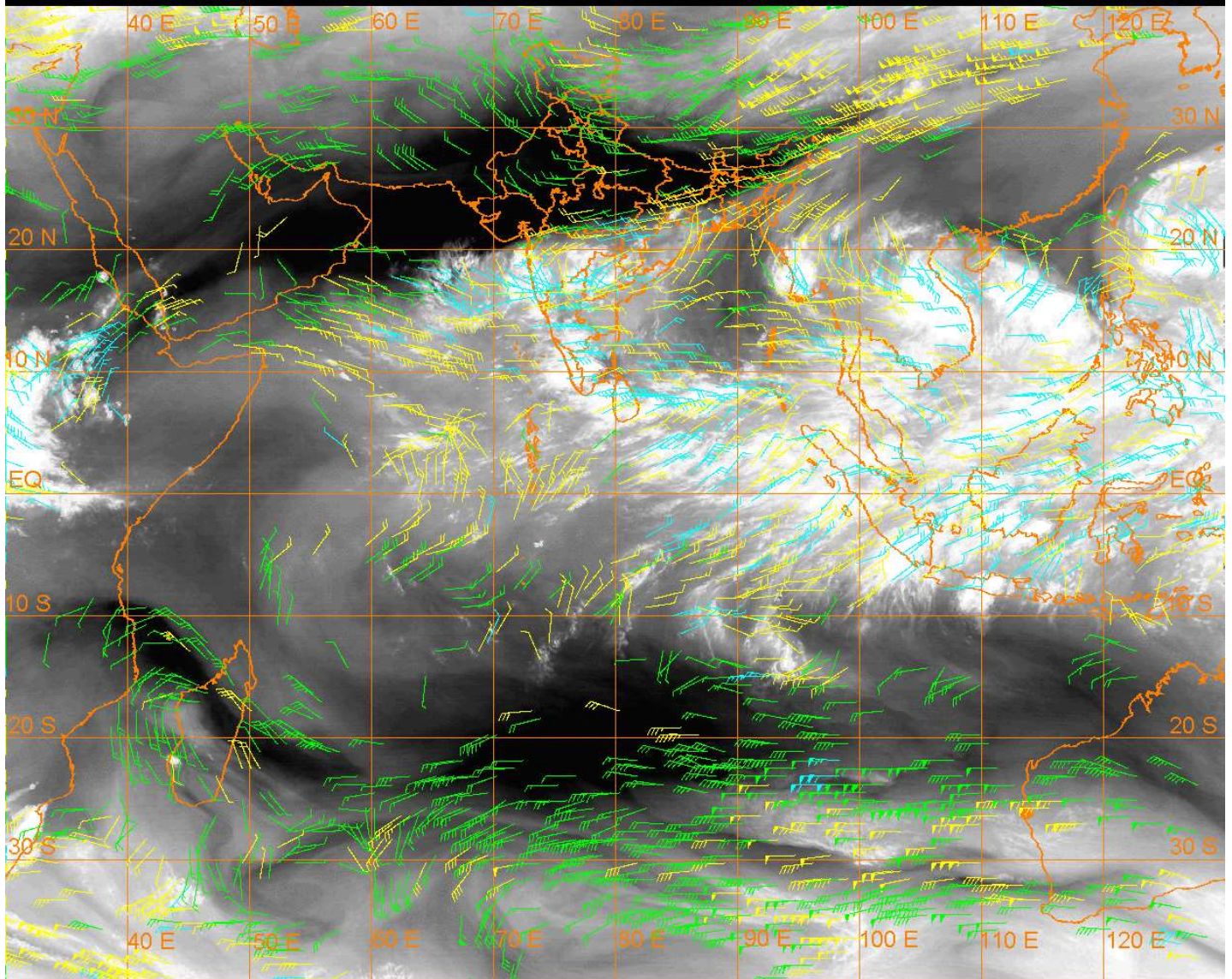
20 Kt

50 Kt

100-250 hPa

251-350 hPa

351-500 hPa



CLOUDS DESCRIPTION WITHIN INDIA:-

NORTH:-

SCT LOW/MED CLOUDS WITH EMBDD ISOL WK TO MOD CONVTN OVER LADAKH (.) SCT LOW/MED CLOUDS J&K HP UTRKND (.)

EAST:-

SCT LOW/MED CLOUDS WITH EMBDD MOD TO INT CONVTN OVER CHTGH SW ORS W JHRKND S GWB (.) SCT LOW/MED CLOUDS WITH EMBDD ISOL WK TO MOD CONVTN OVER REST ORS SKM ARUPR (.) SCT LOW/MED CLOUDS OVER REST JHRKND REST NE STATES (.)

WEST:-

SCT TO BKN LOW/MED CLOUDS WITH EMBDD INT TO V INT CONVTN OVER MAHA GOA (MINIMUM CTT MINUS 90 DEG CEL) (.) SCT LOW/MED CLOUDS OVER E MP SE GUJ (.)

SOUTH:-

SCT TO BKN LOW/MED CLOUDS WITH EMBDD INT TO V INT CONVTN OVER KER S TN (MINIMUM CTT MINUS 93 DEG CEL) TLNGN KRNTK (MINIMUM CTT MINUS 80 DEG CEL) (.) SCT LOW/MED CLOUDS WITH EMBDD MOD TO INT CONVTN OVER COTL AP RYLSMA N TN NICOBAR ILS AND ISOL WK TO MOD CONVTN OVER LKSDWP ILS ANDAMAN ILS (.)

ARABIAN SEA:-

SCT TO BKN LOW/MED CLOUDS WITH EMBDD INT TO V INT CONVTN OVER MAKA KER COASTS (MINIMUM CTT MINUS 80 DEG CEL) (.)

SCT LOW/MED CLOUDS WITH EMBDD MOD TO INT CONVTN OVER EC ARSEA SOUTH ARSEA AND COMORIN AREA (.)

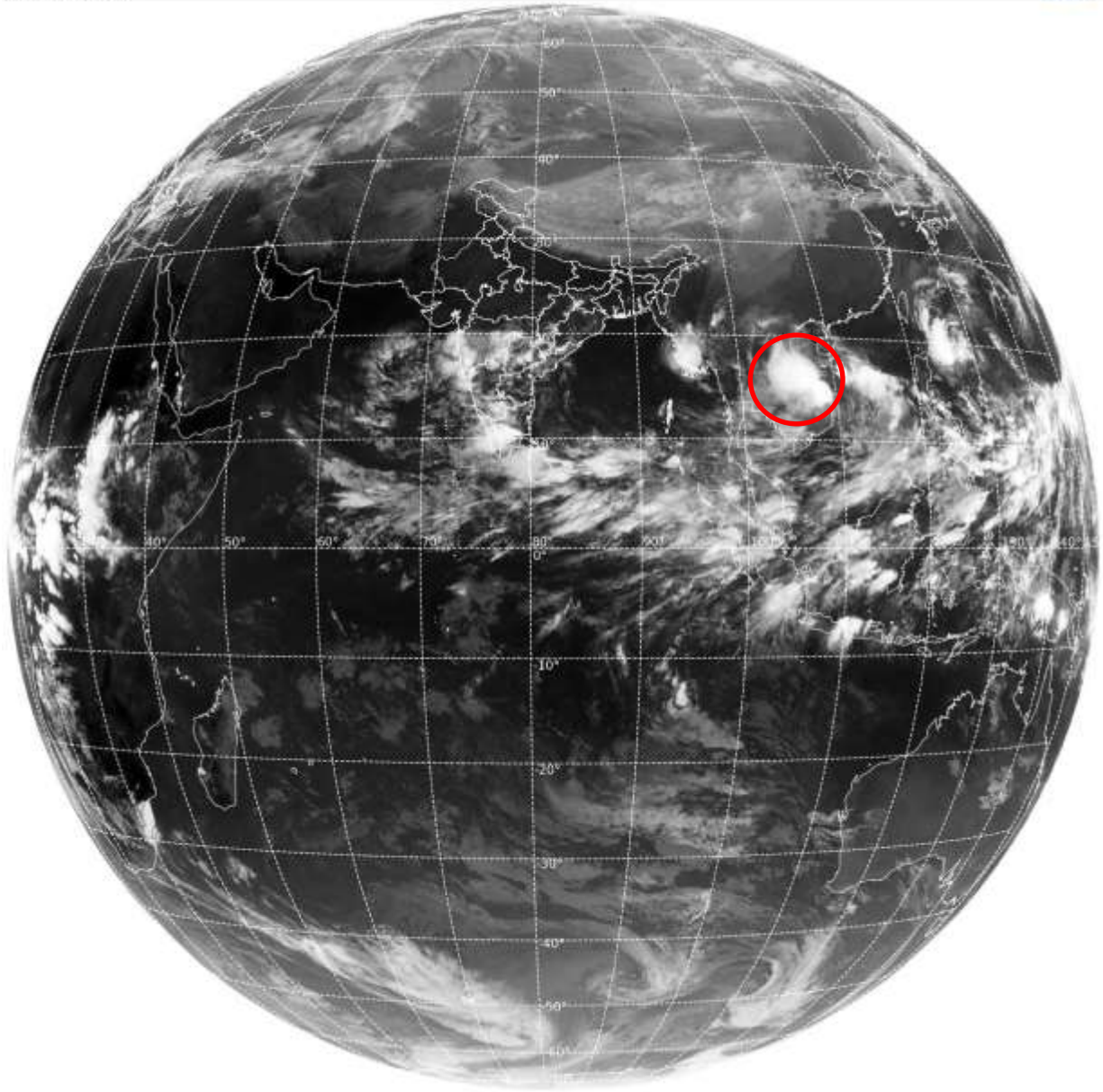
BAY OF BENGAL & ANDAMAN SEA:-

SCT TO BKN LOW/MED CLOUDS WITH EMBDD INT TO V INT CONVTN OVER SOUTH BAY (MINIMUM CTT MINUS 90 DEG CEL) ARAKAN COAST ADJ S MYANMAR (MINIMUM CTT MINUS 93 DEG CEL) (.) SCT LOW/MED CLOUDS WITH EMBDD MOD TO INT CONVTN OVER ANDAMAN SEA GULF OF MARTBAN TENASERIM COT (.)

CLOUDS DESCRIPTION OUTSIDE INDIA:-

SAT : INSAT-3D IMG
Thermal Infrared1 Count 10.8 um
L1B FULL DISK

14-10-2022/(1500 to 1526) GMT
14-10-2022/(2030 to 2056) IST



406

974

IMD,DELHI

VORTEX OVER SOUTH CHINA SEA ADJ VIETNAM:-

VORTEX OVER SOUTH CHINA SEA ADJ VIETNAM (**AREA-F05**) CENTERED NEAR **15.0N / 110.0E** (.) INTENSITY **T2.0/2.0** (.) CORRESPONDING MAXIMUM SUSTAINED WINDS OF **18-33 KTS** (.) ASSTD SCT TO BKN LOW/MED CLOUDS WITH EMBDD INT TO V INT CONVTN OVER VIETNAM ADJ AREA BET LAT 13.0N TO 18.0N LONG 104.0E TO 110.0E (.)

SCT LOW/MED CLOUDS WITH EMBDD MOD TO INT CONVTN OVER MALDIVES TIBET CHINA S MYANMAR THAILAND GULF OF THAILAND CAMBODIA LAOS VIETNAM GULF OF TONKIN SUMATRA STR OF MALACCA MALAYSIA BORNEO SOUTH CHINA SEA JAVA ILS & SEA CELEBES ILS & SEA PHILIPPINES SULU SEA AND OVER INDIAN OCEAN BET LAT 5.0N TO 10.0S LONG 60.0E TO 110.0E (.)

TOO 14/2130 HRS IST=

NNNN

LEGEND:-

REGION	NORTH	J&K HP PJB HARY DLH UP UTRKND
	EAST	BHR JHRKND CHTGH OR WB SKM NORTH- EAST STATES
	WEST	RAJ MP GUJ MAHA GOA
	SOUTH	TLNGN AP KRNTK KER TN LKSDP ANDAMAN & NICOBAR ILS

CLOUD DISTRIBUTION	ISOL	ISOLATED (LESS THAN 25%)
	SCT	SCATTERED (25 TO 50%)
	BKN	BROKEN (51 TO 75%)
	SLD	SOLID (GREATER THAN 75%)
CLOUDS TOP TEMPERATURE	CTT	CLOUD TOP TEMPERATURE
CONVECTION	WK CONVTN	WEAK CONVECTION (CTT GREATER THAN -25°C)
	MOD CONVTN	MODERATE CONVECTION (CTT BETWEEN -25°C TO -40°C)
	INT CONVTN	INTENSE CONVECTION (CTT BETWEEN -41°C TO -70°C)
	V INT CONVTN	VERY INTENSE CONVECTION (CTT LESS THAN -70°C)
METEOROLOGICAL SUB-DIVISIONS, STATES & UNION TERRITORIES	ARUPR	ARUNACHAL PRADESH
	BHR	BIHAR
	CHTGH	CHHATTISGARH
	COTL AP	COASTAL ANDHRA PRADESH
	COTL KRNTK	COASTAL KARNATAKA
	COTL ORS	COASTAL ORISSA
	GUJ	GUJARAT
	GWB	GANGETIC WEST BENGAL
	HARY	HARYANA
	DLH	DELHI
	HP	HIMACHAL PRADESH
	J&K	JAMMU AND KASHMIR
	JHRKND	JHARKHAND
	KER	KERALA
	KKN	KONKAN
	LKSDP	LAKSHADWEEP
	M MAHA	MADHYA MAHARASHTRA
	MAHA	MAHARASHTRA
	MANI	MANIPUR
	MEGHA	MEGHALAYA
	MIZO	MIZORAM
	MP	MADHYA PRADESH
	MRTHWD	MARATHWADA
	NAGA	NAGALAND
	N COTL AP	NORTH COASTAL ANDHRA PRADESH

	NIK	NORTH INTERIOR KARNATAKA
	ORS	ORISSA
	PJB	PUNJAB
	RAJ	RAJASTHAN
	RYLSM	RAYALASEEMA
	SAU & KUTCH	SAURASHTRA & KUTCH
	SHWB	SUB-HIMALAYAN WEST BENGAL
	SIK	SOUTH INTERIOR KARNATAKA
	SKM	SIKKIM
	TLNGN	TELANGANA
	TN	TAMIL NADU
	TRP	TRIPURA
	UP	UTTAR PRADESH
	UTRKN	UTTARAKHAND
	VID	VIDHARBHA
	SHWB	SUB HIMALAYAN WEST BENGAL
	GWB	GANGETIC WEST BENGAL
	ARSEA	ARABIAN SEA
	ILS	ISLANDS
MISCELLANEOUS	ASSW	IN ASSOCIATION WITH
	ASSTD	ASSOCIATED
	LLC	LOW LEVEL CIRCULATION
	EMBDD	EMBEDDED
	N/HOOD	NEIGHBOURHOOD
	EXT	EXTREME