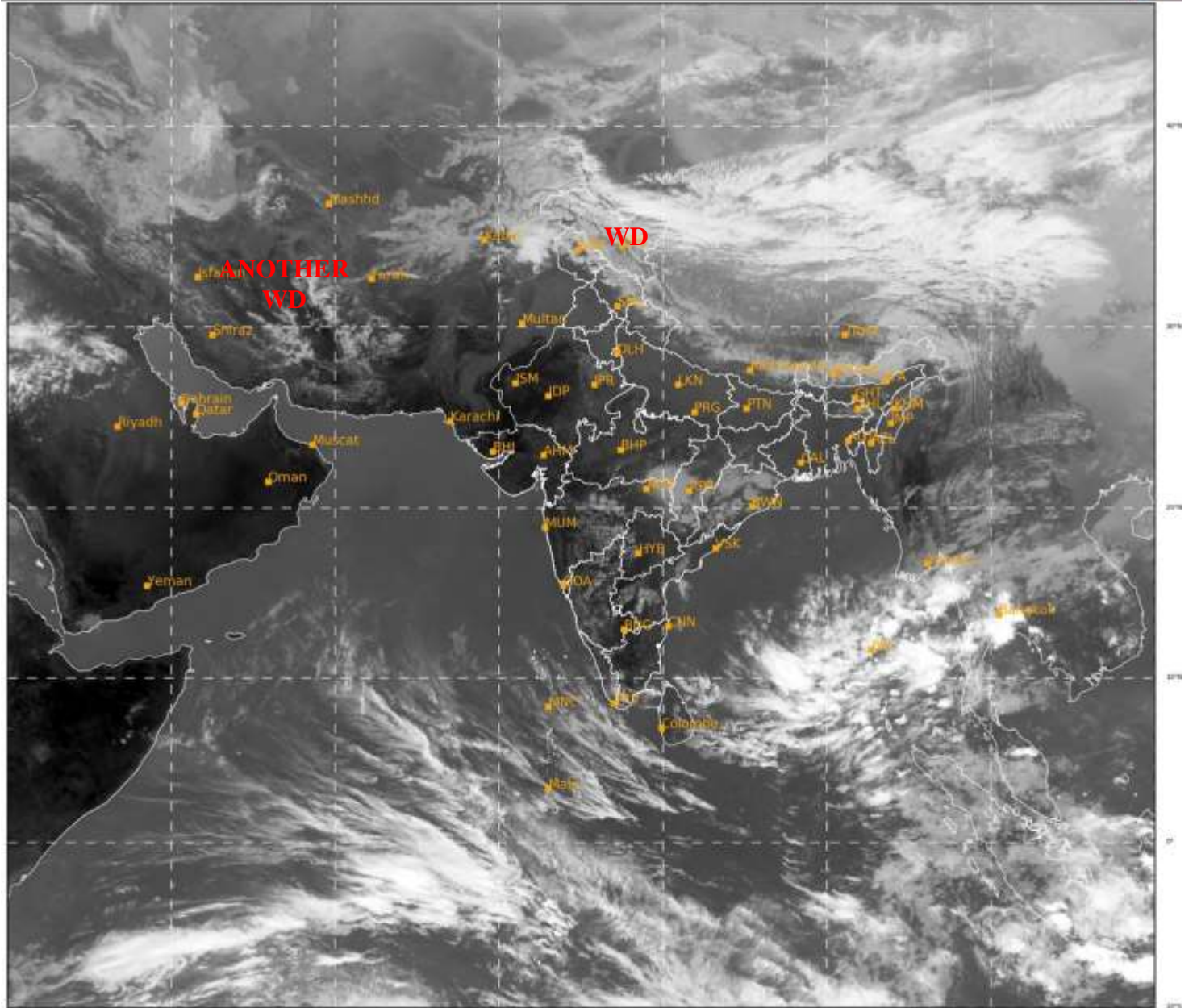




**SATELLITE BULLETIN BASED ON SATELLITE
IMAGERIES AND PRODUCTS**
17.02.2022 TIME 0900 UTC

SAT : INSAT-3D IMG
IMG_TIR1 10.8 um
LIC Mercator

17-02-2022/(0900 to 0926) GMT
17-02-2022/(1430 to 1456) IST



348

943

IMD, DELHI

TCIN50 DEMS 170900

SATELLITE BULLETIN BASED ON INSAT-3D PIC OF 170900 UTC (.)

REGION COVERED BETWEEN LAT 50.0°N TO 30.0°S AND LONG 40.0°E TO 125.0°E (.)

SALIENT FEATURES:-

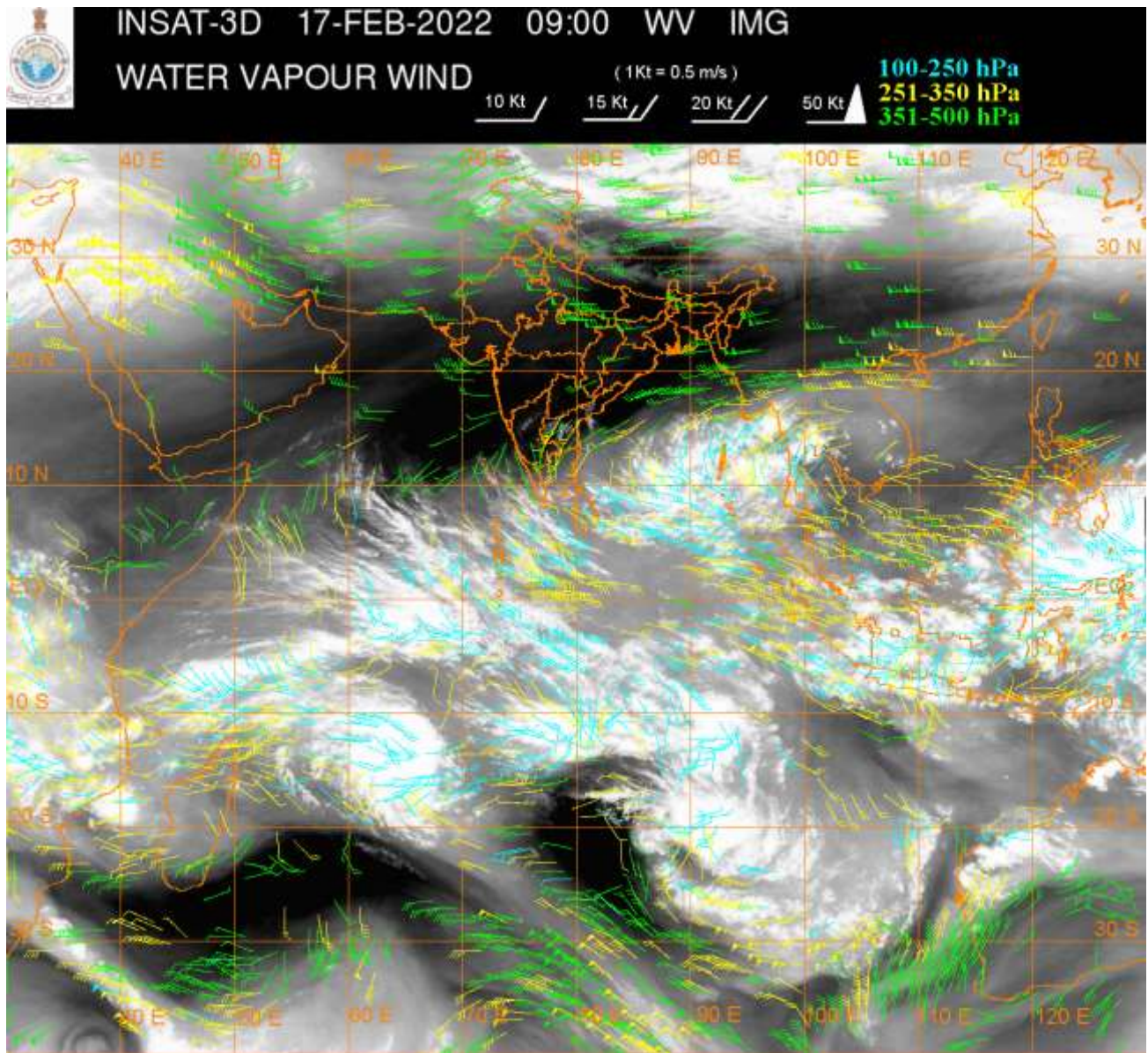
WESTERN DISTURBANCE (WD):-

SCT MULTILAYERED CLOUDS OVER LADAKH TIBET ADJ CHINA IN ASSW **WD** OVER THE AREA (.)

SCT MULTILAYERED CLOUDS OVER IRAN AND N/HOOD IN ASSW **ANOTHER WD** OVER THE AREA (.)

CONVECTION OVER SE BAY OF BENGAL:-

SCT TO BKN INTENSE TO VERY INTENSE CONVECTION OVER SE BAY PERSISTS (.) MINIMUM CTT MINUS **90** DEG C (.)



CLOUDS DESCRIPTION WITHIN INDIA:-

NORTH:-

SCT LOW/MED CLOUDS WITH EMBDD MOD TO INT CONVTN OVER N LADAKH AND WK TO MOD CONVTN OVER REST LADAKH J&K N HP N UTRKND (.) ISOL TO SCT LOW/MED CLOUDS OVER S HP S UTRKND EXT S HARY (.)

EAST:-

SCT LOW/MED CLOUDS WITH EMBDD WK CONVTN OVER CHTGH ORS N SHWB SKM ARUPR C ASSAM E MEGHA (.) SCT LOW/MED CLOUDS OVER JHRKND W MEGHA REST ASSAM NAGA MANI (.)

WEST:-

SCT LOW/MED CLOUDS WITH EMBDD ISOL WK CONVTN OVER SE MP VID (.) SCT LOW/MED CLOUDS OVER RAJ REST MP S GUJ MADHYA MAHA MRTHWD (.)

SOUTH:-

SCT LOW/MED CLOUDS WITH EMBDD INT TO V INT CONVTN OVER ANDAMAN ILS (MINIMUM CTT MINUS 82 DEG C) (.) SCT LOW/MED CLOUDS WITH EMBDD MOD YO INT CONVTN OVER SW TN AND WK TO MOD CONVTN OVER NIK SIK RYLSM COTL AP S KER LKSDP NICOBAR ILS (.) SCT LOW/MED CLOUDS OVER TLNGN N KER REST TN (.)

ARABIAN SEA:-

SCT LOW/MED CLOUDS WITH EMBDD MOD TO INT CONVTN OVER SOUTH ARSEA & COMORIN (.) SCT LOW/MED CLOUDS OVER CENTRAL ARSEA (.)

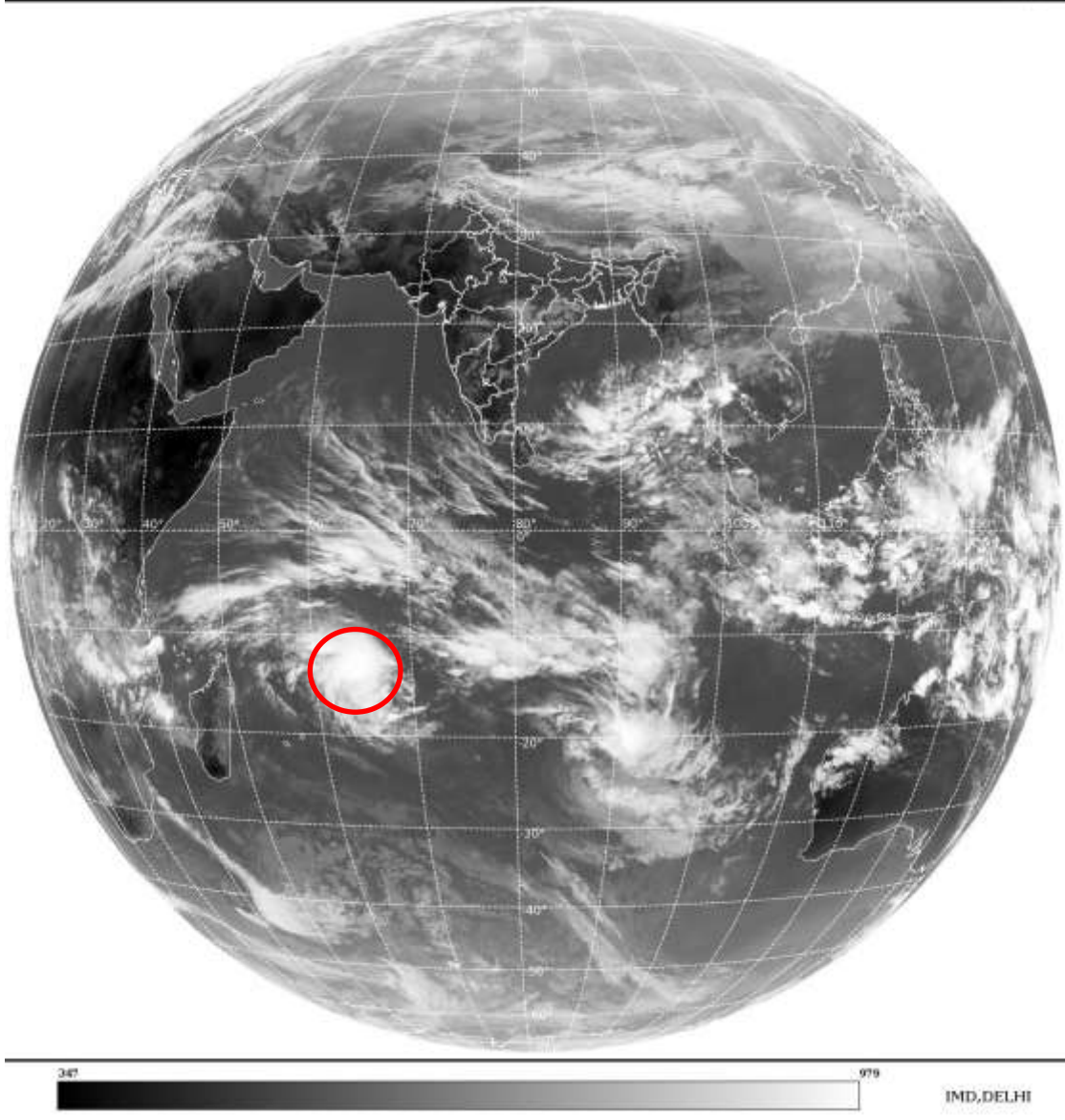
BAY OF BENGAL & ANDAMAN SEA:-

SCT TO BKN LOW/MED CLOUDS WITH EMBDD INT TO V INT CONVTN OVER SE BAY AND ANDAMAN SEA (MINIMUM CTT MINUS 93 DEG C) (.) SCT LOW/MED CLOUDS WITH EMBDD MOD TO INT CONVTN OVER EC & SW BAY (.) SCT LOW/MED CLOUDS WITH EMBDD WK TO MOD CONVTN OVER WC BAY OFF S AP COAST (.)

CLOUDS DESCRIPTION OUTSIDE INDIA:-

SAT : INSAT-3D IMG
Thermal Infrared1 Count 10.8 um
LIB FULL DISK

17-02-2022/(0900 to 0926) GMT
17-02-2022/(1430 to 1456) IST



VORTEX (EMNATI) OVER SOUTH INDIAN OCEAN:-

VORTEX (EMNATI) OVER SOUTH INDIAN OCEAN CENTERED NEAR **13.9S / 65.6E** (.) INTENSITY **T3.5/3.5** (.) ASSTD BKN LOW/MED CLOUDS WITH EMBDD INT TO V INT CONVTN OVER AREA BET LAT 10.0S TO 17.0S LONG 60.0E TO 68.0E (.)

SCT LOW/MED CLOUDS WITH EMBDD MOD TO INT CONVTN OVER PALK STR GULF OF MANNAR MALDIVES N PAK TIBET CHINA YELLOW SEA E CHINA SEA S MYANMAR THAILAND GULF OF THAILAND CAMBODIA LAOS S VIETNAM SUMATRA STR OF MALACCA MALAYSIA BORNEO JAVA ILS & SEA CELEBES ILS & SEA S PHILIPPINES SULU SEA MOZAMBIQUE CHANNEL AND OVER INDIAN OCEAN LAT 5.0N TO LAT 20.0S LONG 45.0E TO 105.0E AND BET LAT 20.0S TO 30.0S LONG 85.0E TO 110.0E (.)

TOO 17/1550 HRS IST=

NNNN

LEGEND:-

REGION	NORTH	J&K HP PJB HARY DLH UP UTRKND
	EAST	BHR JHRKND CHTGH ORS WB SKM NORTH- EAST STATES
	WEST	RAJ MP GUJ MAHA GOA
	SOUTH	TLNGN AP KRNTK KER TN LKSDP ANDAMAN & NICOBAR ILS

CLOUD DISTRIBUTION	ISOL	ISOLATED (LESS THAN 25%)
	SCT	SCATTERED (25 TO 50%)
	BKN	BROKEN (51 TO 75%)
	SLD	SOLID (GREATER THAN 75%)
CLOUDS TOP TEMPERATURE	CTT	CLOUD TOP TEMPERATURE
CONVECTION	WK CONVTN	WEAK CONVECTION (CTT GREATER THAN -25°C)
	MOD CONVTN	MODERATE CONVECTION (CTT BETWEEN -25°C TO -40°C)
	INT CONVTN	INTENSE CONVECTION (CTT BETWEEN -41°C TO -70°C)
	V INT CONVTN	VERY INTENSE CONVECTION (CTT LESS THAN -70°C)
METEOROLOGICAL SUB-DIVISIONS, STATES & UNION TERRITORIES	ARUPR	ARUNACHAL PRADESH
	BHR	BIHAR
	CHTGH	CHHATTISGARH
	COTL AP	COASTAL ANDHRA PRADESH
	COTL KRNTK	COASTAL KARNATAKA
	COTL ORS	COASTAL ORISSA
	GUJ	GUJARAT
	GWB	GANGETIC WEST BENGAL
	HARY	HARYANA
	DLH	DELHI
	HP	HIMACHAL PRADESH
	J&K	JAMMU AND KASHMIR
	JHRKND	JHARKHAND
	KER	KERALA
	KKN	KONKAN
	LKSDP	LAKSHADWEEP
	M MAHA	MADHYA MAHARASHTRA
	MAHA	MAHARASHTRA
	MANI	MANIPUR
	MEGHA	MEGHALAYA
	MIZO	MIZORAM
	MP	MADHYA PRADESH
	MRTHWD	MARATHWADA
	NAGA	NAGALAND

	N COTL AP	NORTH COASTAL ANDHRA PRADESH
	NIK	NORTH INTERIOR KARNATAKA
	ORS	ORISSA
	PJB	PUNJAB
	RAJ	RAJASTHAN
	RYLSM	RAYALASEEMA
	SAU & KUTCH	SAURASHTRA & KUTCH
	SHWB	SUB-HIMALAYAN WEST BENGAL
	SIK	SOUTH INTERIOR KARNATAKA
	SKM	SIKKIM
	TLNGN	TELANGANA
	TN	TAMIL NADU
	TRP	TRIPURA
	UP	UTTAR PRADESH
	UTRKN	UTTARAKHAND
	VID	VIDHARBHA
	SHWB	SUB HIMALAYAN WEST BENGAL
	GWB	GANGETIC WEST BENGAL
	ARSEA	ARABIAN SEA
	ILS	ISLANDS
MISCELLANEOUS	ASSW	IN ASSOCIATION WITH
	ASSTD	ASSOCIATED
	LLC	LOW LEVEL CIRCULATION
	EMBDD	EMBEDDED
	N/HOOD	NEIGHBOURHOOD
	EXT	EXTREME