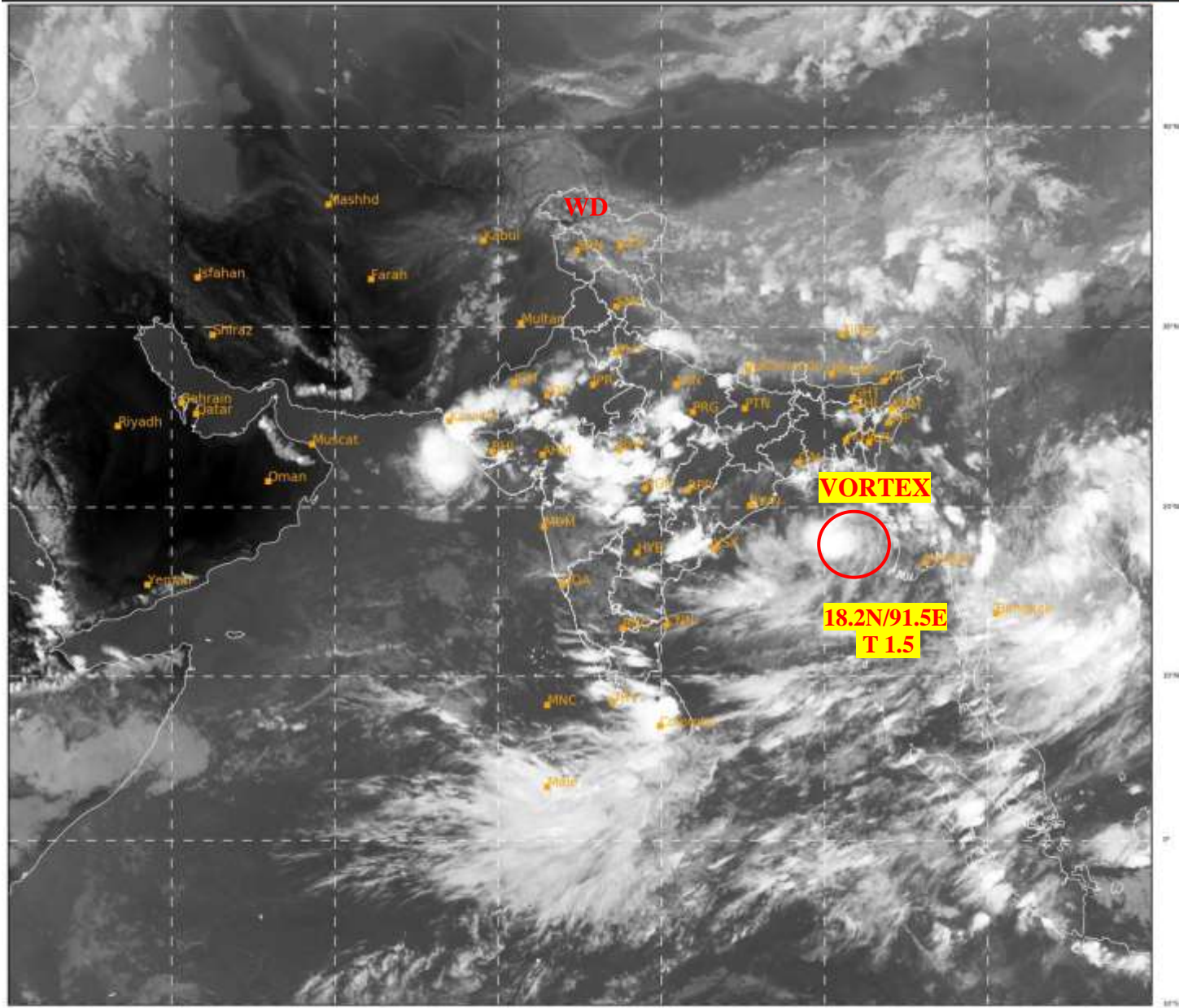




SATELLITE BULLETIN BASED ON SATELLITE
IMAGERIES AND PRODUCTS
24.09.2021 TIME 1200 UTC

SAT : INSAT-3D IMG
IMG_TIR1 10.8 um
LIC Mercator

24-09-2021/(1200 to 1226) GMT
24-09-2021/(1730 to 1756) IST



384

954

IMD, DELHI

TCIN50 DEMS 241200

SATELLITE BULLETIN BASED ON INSAT-3D PIC OF 241200 UTC (.)

REGION COVERED BETWEEN LAT 50.0°N TO 30.0°S AND LONG 40.0°E TO 125.0°E (.)

SALIENT FEATURES:-

VORTEX OVER NE ADJ EC BAY:-

VORTEX OVER NE ADJ EC BAY (.) CENTERED NEAR WITHIN HALF A DEGREE OF **18.2N/91.5E** (.) INTENSITY **T 1.5** (.) ASSTD BKN LOW/MED CLOUDS WITH EMBDD INT TO V INT CONV'TN OVER EC ADJ NE BAY ARAKAN COAST & N/HOOD (.) MINIMUM CTT MINUS **93** DEG C (.)

WESTERN DISTURBANCE (WD):-

SCT MULTILAYERED CLOUDS OVER J&K LADAKH HP UTRKND N TIBET ADJ CHINA AND N/HOOD IN ASSW **WD** OVER THE AREA (.)



INSAT-3D 24-SEP-2021 12:00 WV IMG

WATER VAPOUR WIND

(1Kt = 0.5 m/s)

10 Kt

15 Kt

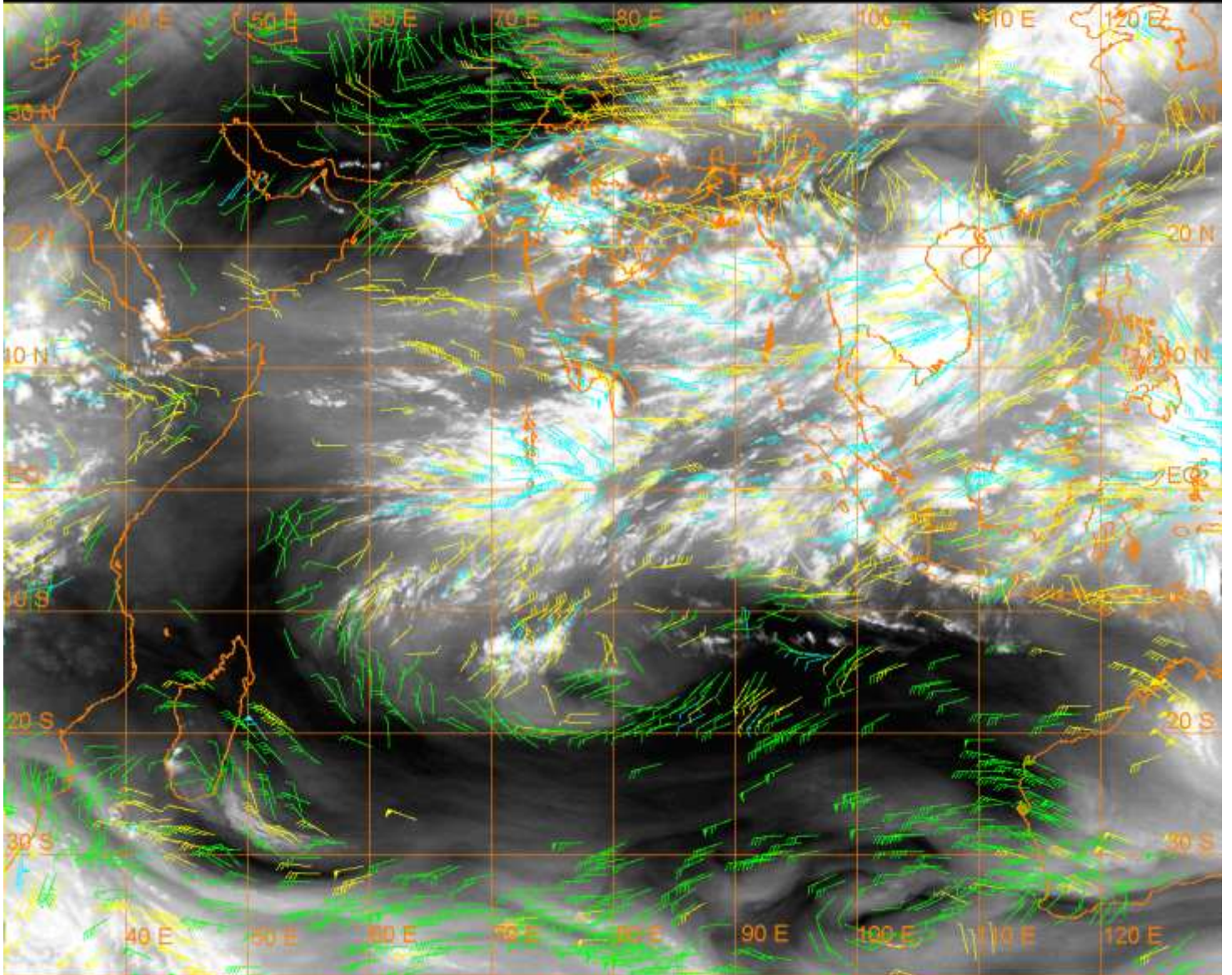
20 Kt

50 Kt

100-250 hPa

251-350 hPa

351-500 hPa



CLOUDS DESCRIPTION WITHIN INDIA:-

NORTH:-

SCT TO BKN LOW/MED CLOUDS WITH EMBDD INT TO V INT CONVTN OVER S UP SE UTRKND
(.) SCT LOW/MED CLOUDS WITH EMBDD MOD TO INT CONVTN OVER NW & NE UP S HARY (.)
SCT LOW/MED CLOUDS WITH EMBDD WK TO MOD CONVTN OVER DLH LADAKH J&K REST
UTRKND REST UP HP REST HARY (.) SCT LOW/MED CLOUDS OVER PJB (.)

EAST:-

SCT LOW/MED CLOUDS WITH EMBDD INT TO V INT CONVTN OVER MEGHA SE ASSAM S
CHTGH S ORS (.)SCT LOW/MED CLOUDS WITH EMBDD MOD TO INT CONVTN OVER EC MEGHA
N NAGA N MANI S MIZO N CHTGH (.) SCT LOW/MED CLOUDS WITH EMBDD WK TO MOD
CONVTN OVER NW & S BHR NW JHRKND REST ORS S GWB SKM ARUPR (.) SCT LOW/MED
CLOUDS OVER REST BHR N GWB REST NE STATES (.)

WEST:-

SCT LOW/MED CLOUDS WITH EMBDD MOD TO INT CONVTN OVER W GUJ MP NW & SC RAJ
VID (.) SCT LOW/MED CLOUDS WITH EMBDD MOD TO INT CONVTN OVER REST GUJ MRTHWD
N RAJ N M MAHA (.) SCT LOW/MED CLOUDS WITH EMBDD WK TO MOD CONVTN OVER REST
RAJ REST MAHA (.)SCT LOW/MED CLOUDS OVER KKN & GOA (.)

SOUTH:-

SCT LOW/MED CLOUDS WITH EMBDD INT V CONVTN OVER NE COTL AP N TLNGN S TN S KER
(.)SCT LOW/MED CLOUDS WITH EMBDD MOD TO INT CONVTN OVER N AP NC TN N KER (.) SCT
LOW/MED CLOUDS WITH EMBDD ISOL WK TO MOD CONVTN OVER KRNTK REST TLNGN SE
RYLSM REST AP ANDAMAN & NICOBAR ILS (.)SCT LOW/MED CLOUDS OVER LKSDP (.)

ARABIAN SEA:-

SCT LOW/MED CLOUDS WITH EMBDD INT TO V INT CONVTN OVER NE ARSEA OFF N GUJ COAST GULF OF KUTCH GULF OF CAMBAY (.) SCT LOW/MED CLOUDS WITH EMBDD WK TO MOD CONVTN OVER EC ARSEA OFF SOUTH MAHA-GOA-KRNTK COASTS AND SC ARSEA (.)

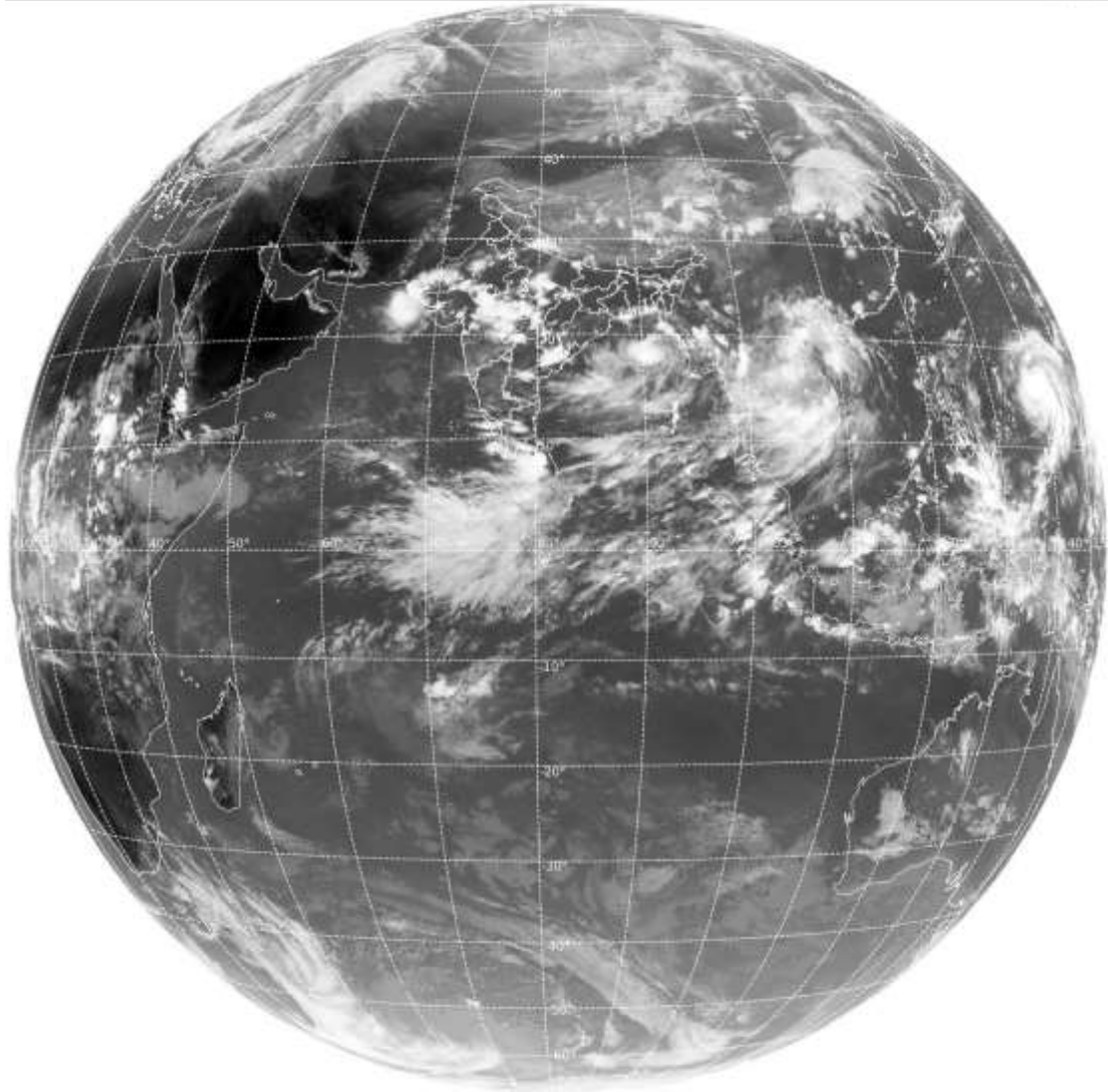
BAY OF BENGAL & ANDAMAN SEA:-

SCT TO BKN LOW/MED CLOUDS WITH EMBDD INT TO V INT CONVTN OVER NE ADJ CENTRAL BAY ARAKAN COAST (.) SCT LOW/MED CLOUDS WITH EMBDD MOD TO INT CONVTN OVER SW BAY OFF N TN COAST SE BAY & S ANDAMAN SEA (.)

CLOUDS DESCRIPTION OUTSIDE INDIA:-

SAT : INSAT-3D IMG
Thermal Infrared1 Count 10.8 um
LIB FULL DISK

24-09-2021/(1200 to 1226) GMT
24-09-2021/(1730 to 1756) IST



384

980

IMD,DELHI

SCT LOW/MED CLOUDS WITH EMBDD MOD TO INT CONVTN OVER SRI LANKA S PAK NEPAL TIBET CHINA YELLOW SEA E CHINA SEA TAIWAN MYANMAR THAILAND GULF OF THAILAND CAMBODIA LAOS VIETNAM GULF OF TONKIN HAINAN SUMATRA ADJ W COAST STR OF MALACCA MALAYSIA BORNEO SOUTH CHINA SEA JAVA ILS & SEA CELEBES ILS & SEA PHILIPPINES SULU SEA AND OVER THE INDIAN OCEAN BET LAT 5.0N TO 10.0S LONG 60.0E TO 102.0E (.)

TOO 24/1915EF=

NNNN

LEGEND:-

REGION	NORTH	J&K HP PJB HARY DLH UP UTRKND
	EAST	BHR JHRKND CHTGH ORS WB SKMNORTH- EAST STATES
	WEST	RAJ MP GUJ MAHA GOA
	SOUTH	TLNGN AP KRNTK KER TN LKSDP ANDAMAN & NICOBAR ILS

CLOUD DISTRIBUTION	ISOL	ISOLATED (LESS THAN 25%)
	SCT	SCATTERED (25 TO 50%)
	BKN	BROKEN (51 TO 75%)
	SLD	SOLID (GREATER THAN 75%)
CLOUDS TOP TEMPERATURE	CTT	CLOUD TOP TEMPERATURE
CONVECTION	WK CONVTN	WEAK CONVECTION (CTT GREATER THAN -25°C)
	MOD CONVTN	MODERATE CONVECTION (CTT BETWEEN -25°C TO -40°C)
	INT CONVTN	INTENSE CONVECTION (CTT BETWEEN -41°C TO -70°C)
	V INT CONVTN	VERY INTENSE CONVECTION (CTT LESS THAN -70°C)
METEOROLOGICAL SUB-DIVISIONS, STATES & UNION TERRITORIES	ARUPR	ARUNACHAL PRADESH
	BHR	BIHAR
	CHTGH	CHHATTISGARH
	COTL AP	COASTAL ANDHRA PRADESH
	COTL KRNTK	COASTAL KARNATAKA
	COTL ORS	COASTAL ORISSA
	GUJ	GUJARAT
	GWB	GANGETIC WEST BENGAL
	HARY	HARYANA
	DLH	DELHI
	HP	HIMACHAL PRADESH
	J&K	JAMMU AND KASHMIR
	JHRKND	JHARKHAND
	KER	KERALA
	KKN	KONKAN
	LKSDP	LAKSHADWEEP
	M MAHA	MADHYA MAHARASHTRA
	MAHA	MAHARASHTRA
	MANI	MANIPUR
	MEGHA	MEGHALAYA
	MIZO	MIZORAM
	MP	MADHYA PRADESH
		MRTHWD
NAGA		NAGALAND
N COTL AP		NORTH COASTAL ANDHRA PRADESH

	NIK	NORTH INTERIOR KARNATAKA
	ORS	ORISSA
	PJB	PUNJAB
	RAJ	RAJASTHAN
	RYLSM	RAYALASEEMA
	SAU & KUTCH	SAURASHTRA & KUTCH
	SHWB	SUB-HIMALAYAN WEST BENGAL
	SIK	SOUTH INTERIOR KARNATAKA
	SKM	SIKKIM
	TLNGN	TELANGANA
	TN	TAMIL NADU
	TRP	TRIPURA
	UP	UTTAR PRADESH
	UTRKN	UTTARAKHAND
	VID	VIDHARBHA
	SHWB	SUB HIMALAYAN WEST BENGAL
	GWB	GANGETIC WEST BENGAL
	ARSEA	ARABIAN SEA
	ILS	ISLANDS
MISCELLANEOUS	ASSW	IN ASSOCIATION WITH
	ASSTD	ASSOCIATED
	LLC	LOW LEVEL CIRCULATION
	EMBDD	EMBEDDED
	N/HOOD	NEIGHBOURHOOD
	EXT	EXTREME