



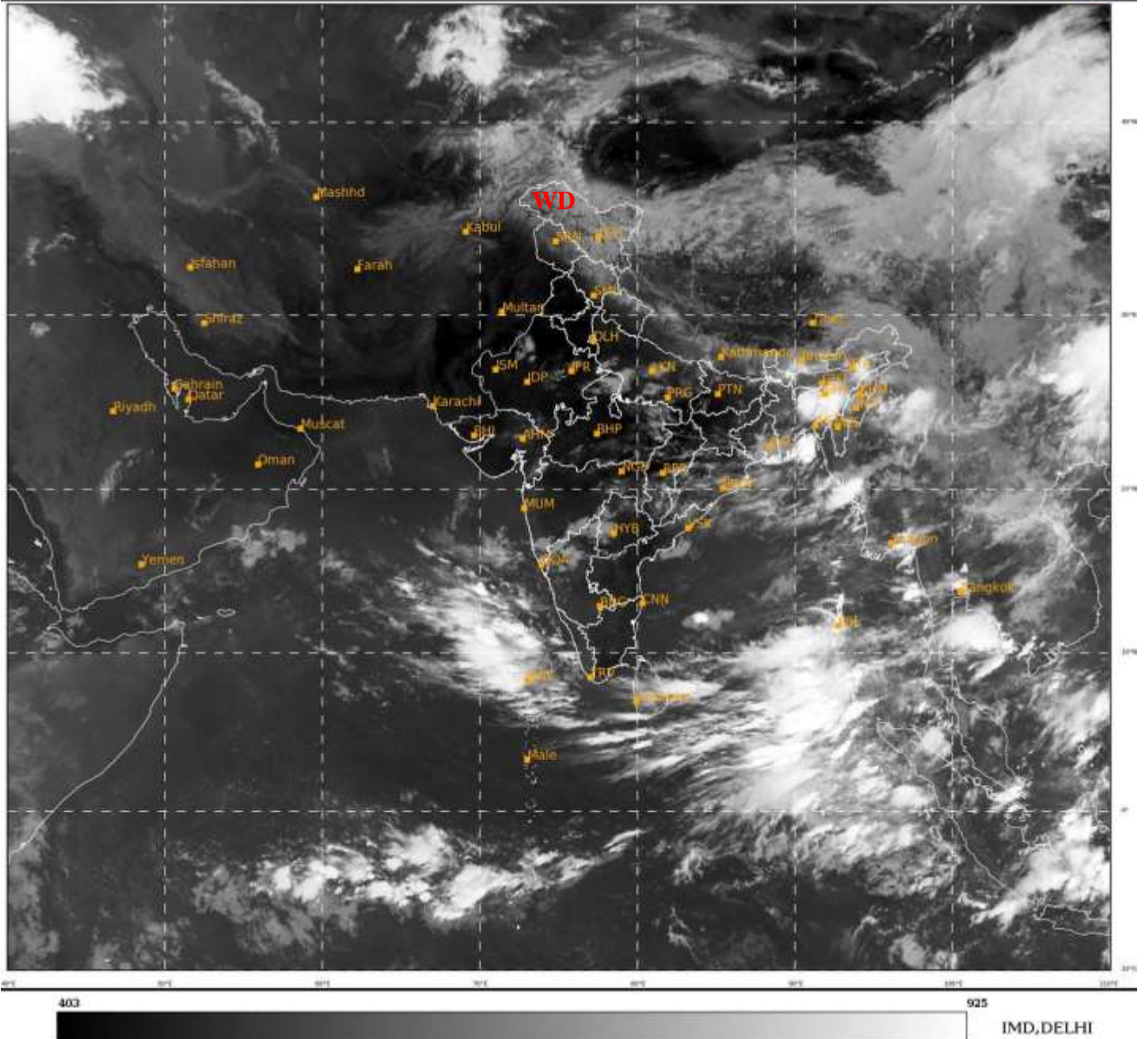
भारत मौसम विज्ञान विभाग  
पृथ्वी विज्ञान मंत्रालय  
India Meteorological Department  
Ministry of Earth Sciences



**SATELLITE BULLETIN BASED ON SATELLITE  
IMAGERIES AND PRODUCTS**  
**03.06.2022 TIME 0300 UTC**

SAT : INSAT-3D IMG  
IMG\_TIR1 10.8 um  
LIC Mercator

03-06-2022/(0300 to 0327) GMT  
03-06-2022/(0830 to 0857) IST



TCIN50 DEMS 030300

SATELLITE BULLETIN BASED ON INSAT-3D PIC OF 030300 UTC (.)

REGION COVERED BETWEEN LAT 50.0°N TO 30.0°S AND LONG 40.0°E TO 125.0°E (.)

**SALIENT FEATURES:-**

**WESTERN DISTURBANCE (WD):-**

SCT MULTILAYERED CLOUDS OVER LADAKH N TIBET ADJ CHINA IN ASSW **WD** OVER THE AREA (.)

**THUNDERSTORM / CONVECTIVE ACTIVITY:-**

THUNDERSTORM/ CONVECTIVE ACTIVITIES OBSERVED OVER N SHWB W ARUPR ASSAM MEGHA LKSDP ILS ANDAMAN & NICOBAR ILS (.)

**DUST:-**

DUST NOT OBSERVED OVER INDIAN REGION (.)



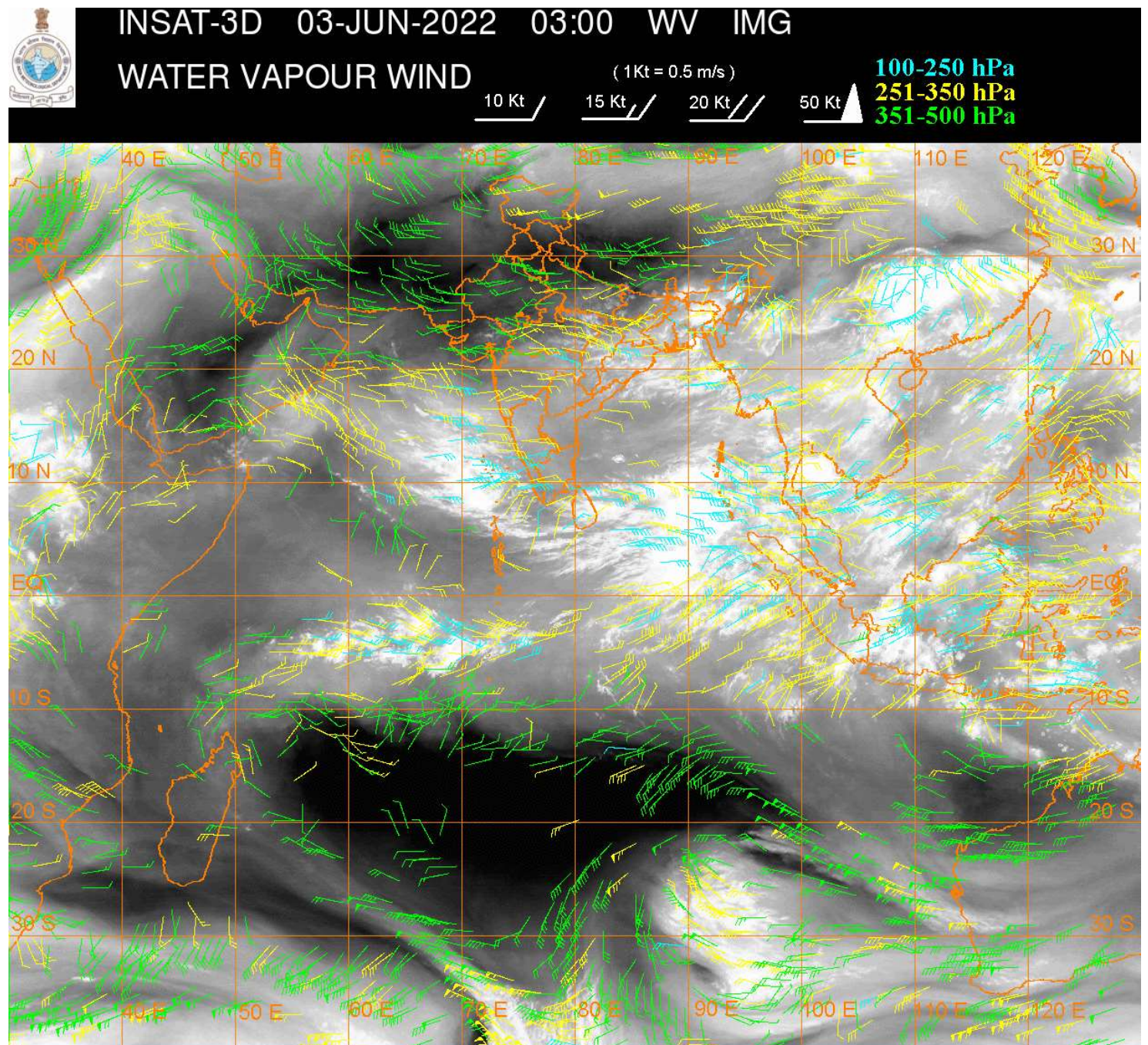
**PRECIPITATION NOWCASTING:-**

**(BASED ON SCOPE NOWCASTING TOOL AT 0200 UTC AT A LEAD TIME OF 03 HRS (MM/HR):-**

**RAINFALL UP TO 10-20 MM LIKELY OVER MEGHA (.)**

**RAINFALL UP TO 5-10 MM LIKELY OVER NE ASSAM LKSDP ILS & NICOBAR ILS (.)**

**RAINFALL UP TO 0.5-5 MM LIKELY OVER C ORS E GWB NAGA & ANDAMAN ILS (.)**



**CLOUDS DESCRIPTION WITHIN INDIA:-**

**NORTH:-**

**SCT LOW/MED CLOUDS WITH EMBDD ISOL WK CONVTN OVER LADAKH UP (.) SCT LOW/MED CLOUDS OVER J&K N HP N UTRKND (.)**

**EAST:-**

**SCT LOW/MED CLOUDS WITH EMBDD MOD TO INT CONVTN OVER N SHWB ARUPR ASSAM MEGHA BD (.) SCT LOW/MED CLOUDS WITH EMBDD ISOL WK TO MOD CONVTN OVER CHTGH ORS JHRKND GWB SKM REST NE STATES (.) SCT LOW/MED CLOUDS OVER BHR (.)**

**WEST:-**

**SCT LOW/MED CLOUDS WITH EMBDD ISOL WK CONVTN OVER N RAJ N MP VID S MRTHWD SOUTH M MAHA (.) SCT LOW/MED CLOUDS OVER SE RAJ S MP E GUJ REST MAHA & GOA (.)**

**SOUTH:-**

**SCT TO BKN LOW/MED CLOUDS WITH EMBDD MOD TO INT CONVTN OVER LKSDP ILS ANDAMAN & NICOBAR ILS (.) SCT LOW/MED CLOUDS WITH EMBDD ISOL WK CONVTN OVER W TLNGN N COTL AP NIK (.) SCT LOW/MED CLOUDS OVER E TLNGN N RYLSM REST KRNTK KER (.)**



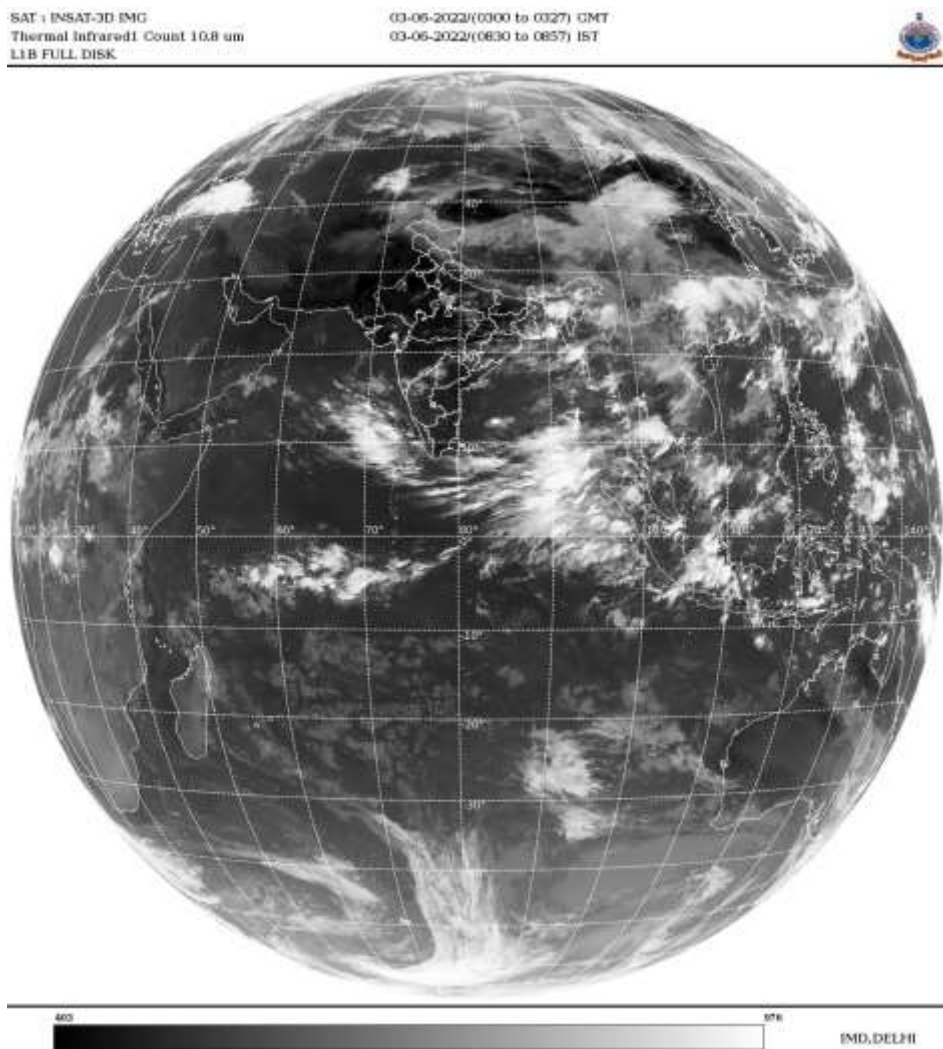
**ARABIAN SEA:-**

SCT LOW/MED CLOUDS WITH EMBDD INT TO V INT CONVTN OVER SE ARSEA AND MOD TO INT CONVTN OVER EC ARSEA & COMORIN AREA (.)

**BAY OF BENGAL & ANDAMAN SEA:-**

SCT LOW/MED CLOUDS WITH EMBDD INT TO V INT CONVTN OVER SOUTH BAY AND MOD TO INT CONVTN OVER N BAY ANDAMAN SEA (.)

**CLOUDS DESCRIPTION OUTSIDE INDIA:-**



SCT LOW/MED CLOUDS WITH EMBDD MOD TO INT CONVTN OVER SRILANKA N MALDIVES N TIBET BHUTAN CHINA MYNMAR THAILAND GULF OF THAILAND CAMBODIA LAOS N VIETNAM SUMATRA MALACCA MALAY PENINSULA BORNEO SOUTH CHINA SEA JAVA ILS & SEA PHILIPPINES E CHINA SEA AND OVER INDIAN OCEAN BET LAT 1.0S TO 7.0S LONG 55.0E TO 80.0E AND BET LAT 5.0N TO 5.0S LONG 80.0E TO 100.0E (.)

TOO 03/0940 HRS IST=

NNNN

**LEGEND:-**

|        |       |  |
|--------|-------|--|
| REGION | NORTH | J&K HP PJB HARY DLH UP UTRKND                        |
|        | EAST  | BHR JHRKND CHTGH OR WB SKM<br>NORTH- EAST STATES     |
|        | WEST  | RAJ MP GUJ MAHA GOA                                  |
|        | SOUTH | TLNGN AP KRNTK KER TN LKSDP<br>ANDAMAN & NICOBAR ILS |

|   |                        |   |
|---|------------------------|---|
| <b>CLOUD DISTRIBUTION</b>   | <b>ISOL</b>            | <b>ISOLATED (LESS THAN 25%)</b>                             |
|   | <b>SCT</b>             | <b>SCATTERED (25 TO 50%)</b>                                |
|   | <b>BKN</b>             | <b>BROKEN (51 TO 75%)</b>                                   |
|   | <b>SLD</b>             | <b>SOLID (GREATER THAN 75%)</b>                             |
| <b>CLOUDS TOP TEMPERATURE</b>                                       | <b>CTT</b>             | <b>CLOUD TOP TEMPERATURE</b>                                |
| <b>CONVECTION</b>   | <b>WK CONVTN</b>       | <b>WEAK CONVECTION<br/>(CTT GREATER THAN -25°C)</b>         |
|   | <b>MOD CONVTN</b>      | <b>MODERATE CONVECTION<br/>(CTT BETWEEN -25°C TO -40°C)</b> |
|   | <b>INT CONVTN</b>      | <b>INTENSE CONVECTION<br/>(CTT BETWEEN -41°C TO -70°C)</b>  |
|   | <b>V INT CONVTN</b>    | <b>VERY INTENSE CONVECTION<br/>(CTT LESS THAN -70°C)</b>    |
| <b>METEOROLOGICAL SUB-DIVISIONS, STATES &amp; UNION TERRITORIES</b> | <b>ARUPR</b>           | <b>ARUNACHAL PRADESH</b>                                    |
|   | <b>BHR</b>             | <b>BIHAR</b>  |
|   | <b>CHTGH</b>           | <b>CHHATTISGARH</b>   |
|   | <b>COTL AP</b>         | <b>COASTAL ANDHRA PRADESH</b>                               |
|   | <b>COTL KRNTK</b>      | <b>COASTAL KARNATAKA</b>                                    |
|   | <b>COTL ORS</b>        | <b>COASTAL ORISSA</b>                                       |
|   | <b>GUJ</b>             | <b>GUJARAT</b>  |
|   | <b>GWB</b>             | <b>GANGETIC WEST BENGAL</b>                                 |
|   | <b>HARY</b>            | <b>HARYANA</b>  |
|   | <b>DLH</b>             | <b>DELHI</b>  |
|   | <b>HP</b>              | <b>HIMACHAL PRADESH</b>                                     |
|   | <b>J&amp;K</b>         | <b>JAMMU AND KASHMIR</b>                                    |
|   | <b>JHRKND</b>          | <b>JHARKHAND</b>  |
|   | <b>KER</b>             | <b>KERALA</b>   |
|   | <b>KKN</b>             | <b>KONKAN</b>   |
|   | <b>LKSDP</b>           | <b>LAKSHADWEEP</b>  |
|   | <b>M MAHA</b>          | <b>MADHYA MAHARASHTRA</b>                                   |
|   | <b>MAHA</b>            | <b>MAHARASHTRA</b>  |
|   | <b>MANI</b>            | <b>MANIPUR</b>  |
|   | <b>MEGHA</b>           | <b>MEGHALAYA</b>  |
|   | <b>MIZO</b>            | <b>MIZORAM</b>  |
|   | <b>MP</b>              | <b>MADHYA PRADESH</b>                                       |
|   | <b>MRTHWD</b>          | <b>MARATHWADA</b>   |
|   | <b>NAGA</b>            | <b>NAGALAND</b>   |
|   | <b>N COTL AP</b>       | <b>NORTH COASTAL ANDHRA PRADESH</b>                         |
|   | <b>NIK</b>             | <b>NORTH INTERIOR KARNATAKA</b>                             |
|   | <b>ORS</b>             | <b>ORISSA</b>   |
|   | <b>PJB</b>             | <b>PUNJAB</b>   |
|   | <b>RAJ</b>             | <b>RAJASTHAN</b>  |
|   | <b>RYLSM</b>           | <b>RAYALASEEMA</b>  |
|   | <b>SAU &amp; KUTCH</b> | <b>SAURASHTRA &amp; KUTCH</b>                               |
|   | <b>SHWB</b>            | <b>SUB-HIMALAYAN WEST BENGAL</b>                            |

|                      |               |                                  |
|----------------------|---------------|----------------------------------|
|                      | <b>SIK</b>    | <b>SOUTH INTERIOR KARNATAKA</b>  |
|                      | <b>SKM</b>    | <b>SIKKIM</b>                    |
|                      | <b>TLNGN</b>  | <b>TELANGANA</b>                 |
|                      | <b>TN</b>     | <b>TAMIL NADU</b>                |
|                      | <b>TRP</b>    | <b>TRIPURA</b>                   |
|                      | <b>UP</b>     | <b>UTTAR PRADESH</b>             |
|                      | <b>UTRKND</b> | <b>UTTARAKHAND</b>               |
|                      | <b>VID</b>    | <b>VIDHARBHA</b>                 |
|                      | <b>SHWB</b>   | <b>SUB HIMALAYAN WEST BENGAL</b> |
|                      | <b>GWB</b>    | <b>GANGETIC WEST BENGAL</b>      |
|                      | <b>ARSEA</b>  | <b>ARABIAN SEA</b>               |
|                      | <b>ILS</b>    | <b>ISLANDS</b>                   |
| <b>MISCELLANEOUS</b> | <b>ASSW</b>   | <b>IN ASSOCIATION WITH</b>       |
|                      | <b>ASSTD</b>  | <b>ASSOCIATED</b>                |
|                      | <b>LLC</b>    | <b>LOW LEVEL CIRCULATION</b>     |
|                      | <b>EMBDD</b>  | <b>EMBEDDED</b>                  |
|                      | <b>N/HOOD</b> | <b>NEIGHBOURHOOD</b>             |
|                      | <b>EXT</b>    | <b>EXTREME</b>                   |