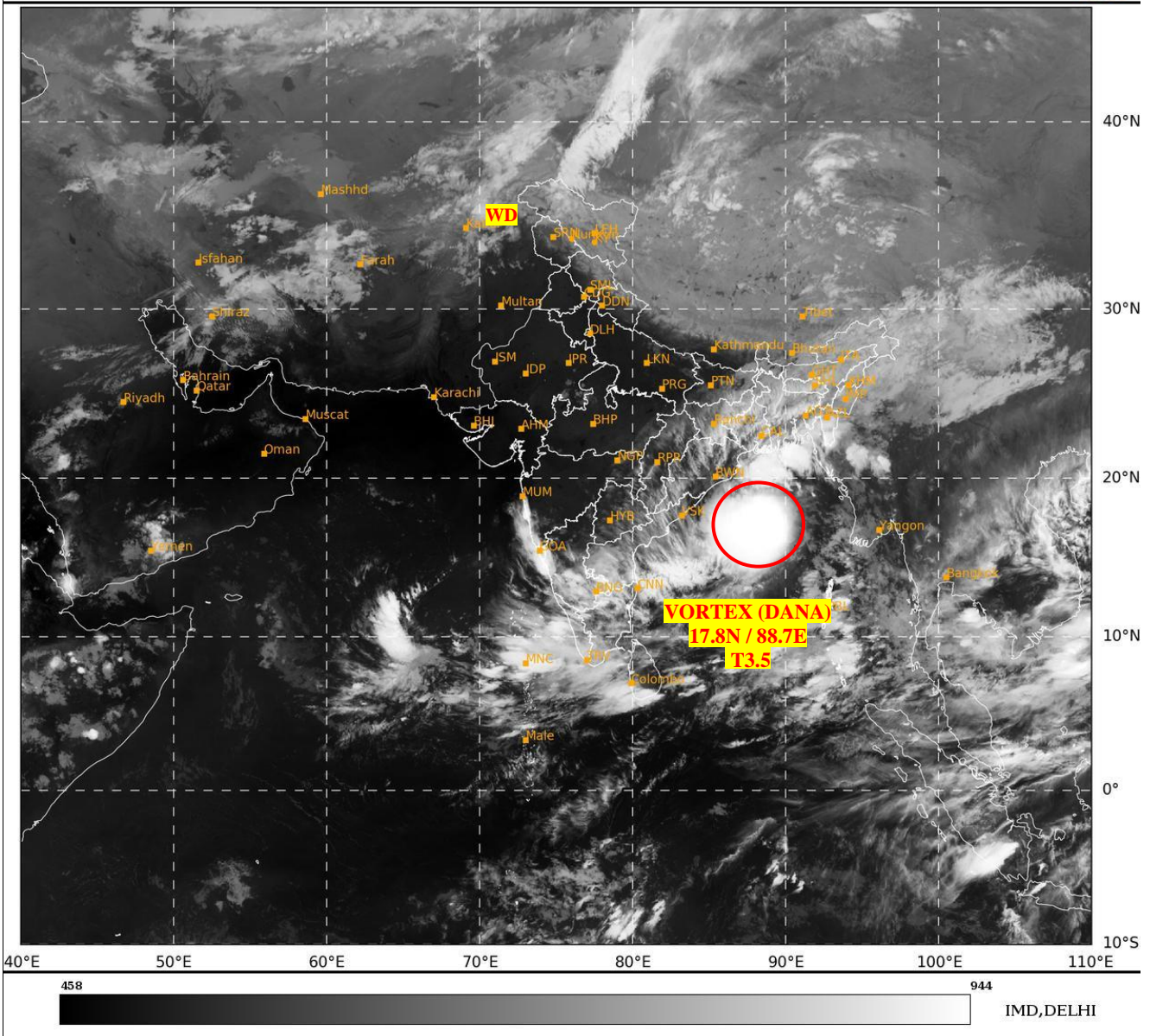




**SATELLITE BULLETIN BASED ON SATELLITE
IMAGERIES AND PRODUCTS**
23.10.2024 TIME 1800 UTC

SAT : INSAT-3DR IMG
IMG_TIR1 10.8 um
LIC Mercator

23-10-2024/(1645 to 1712) GMT
23-10-2024/(2215 to 2242) IST



TCIN50 DEMS 231800

SATELLITE BULLETIN BASED ON INSAT-3DR PIC OF 231645 UTC (.)

REGION COVERED BETWEEN LAT 50.0°N TO 35.0°S AND LONG 40.0°E TO 125.0°E (.)

SALIENT FEATURES:-

VORTEX (DANA) OVER EAST CENTRAL ADJ WEST CENTRAL BAY:-

VORTEX (DANA) OVER EC ADJ WC BAY WITH CENTERED NEAR **17.8N / 88.7E** (.) INTENSITY **T3.5** (.) ASSTD BKN LOW/MED CLOUDS WITH EMBDD INT TO V INT CONVTN OVER CENTRAL & NORTH BAY BET LAT 15.0N TO 21.0N AND LONG 85.0E TO 90.0E (MINIMUM **CTT MINUS 93** DEG CEL) (.)

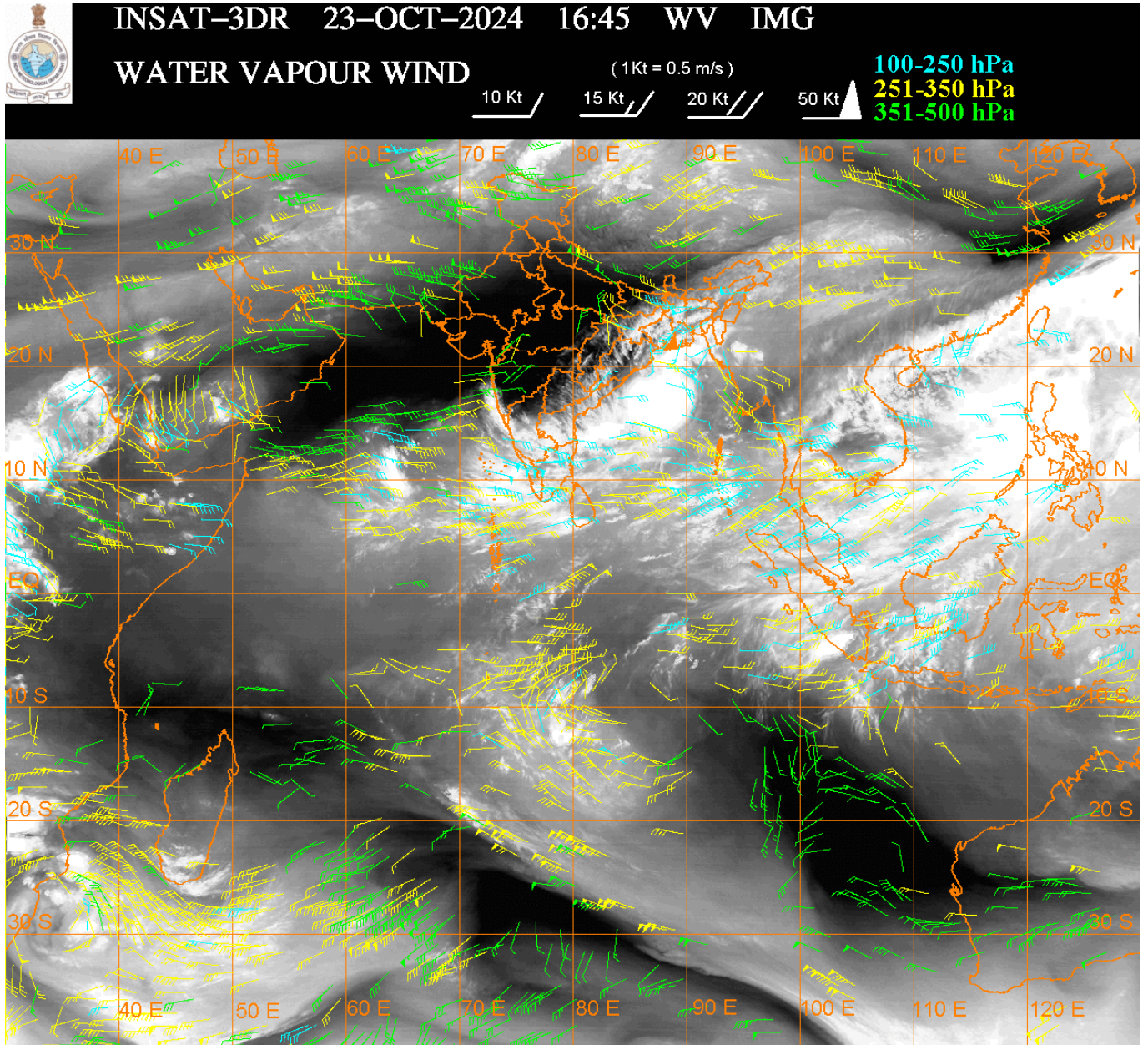
WESTERN DISTURBANCE:-

SCT MULTILAYERED CLOUDS OVER N PAK NW LADAKH & N/HOOD IN ASSW **WD** OVER THE AREA (.)

CONVECTIVE / THUNDERSTORM ACTIVITY:-

INTENSE TO VERY INTENSE CONVECTIVE / THUNDERSTORM ACTIVITY OBSERVED OVER KKN COTL KRNTK SIK (MINIMUM **CTT MINUS 80-90** DEG CEL) (.)

MODERATE TO INTENSE CONVECTIVE / THUNDERSTORM ACTIVITY OBSERVED OVER ORS JHRKND GWB NE STATES COTL AP RYLSM KER TN LKSDP ILS ANDAMAN & NICOBAR ILS (MINIMUM CTT MINUS 50-70 DEG CEL) (.)



CLOUDS DESCRIPTION WITHIN INDIA:-

NORTH:-

SCT LOW/MED CLOUDS WITH EMBDD ISOL MOD TO INT CONVTN OVER NW LADAKH AND ISOL WK TO MOD CONVTN OVER REST LADAKH J&K (.) SCT LOW/MED CLOUDS OVER HP UTRKND E UP (.)

EAST:-

SCT LOW/MED CLOUDS WITH EMBDD MOD TO INT OVER JHRKND ORS GWB NE STATES BD AND WK TO MOD CONVTN OVER BHR CHTGH SHWB SKM (.)

WEST:-

SCT LOW/MED CLOUDS WITH EMBDD INT TO V INT CONVTN OVER KKN GOA (.) SCT LOW/MED CLOUDS WITH EMBDD ISOL WK TO MOD CONVTN OVER E VID (.) SCT LOW/MED CLOUDS OVER E RAJ MP REST MAHA (.)

SOUTH:-

SCT LOW/MED CLOUDS WITH EMBDD INT TO V INT CONVTN OVER COTL KRNTK SIK (.) SCT LOW/MED CLOUDS WITH EMBDD MOD TO INT CONVTN OVER NIK COTL AP RYLSM KER TN LKSDP ILS ANDAMAN & NICOBAR ILS (.) SCT LOW/MED CLOUDS WITH EMBDD ISOL WK TO MOD CONVTN OVER TLNGN (.)

ARABIAN SEA:-

SCT LOW/MED CLOUDS WITH EMBDD MOD TO INT CONVTN OVER EC ARSEA OFF MAHA KRNTK COASTS SE ADJ SW ARSEA LKSDP ILS AREA MALDIVES & COMORIN AREA (.)

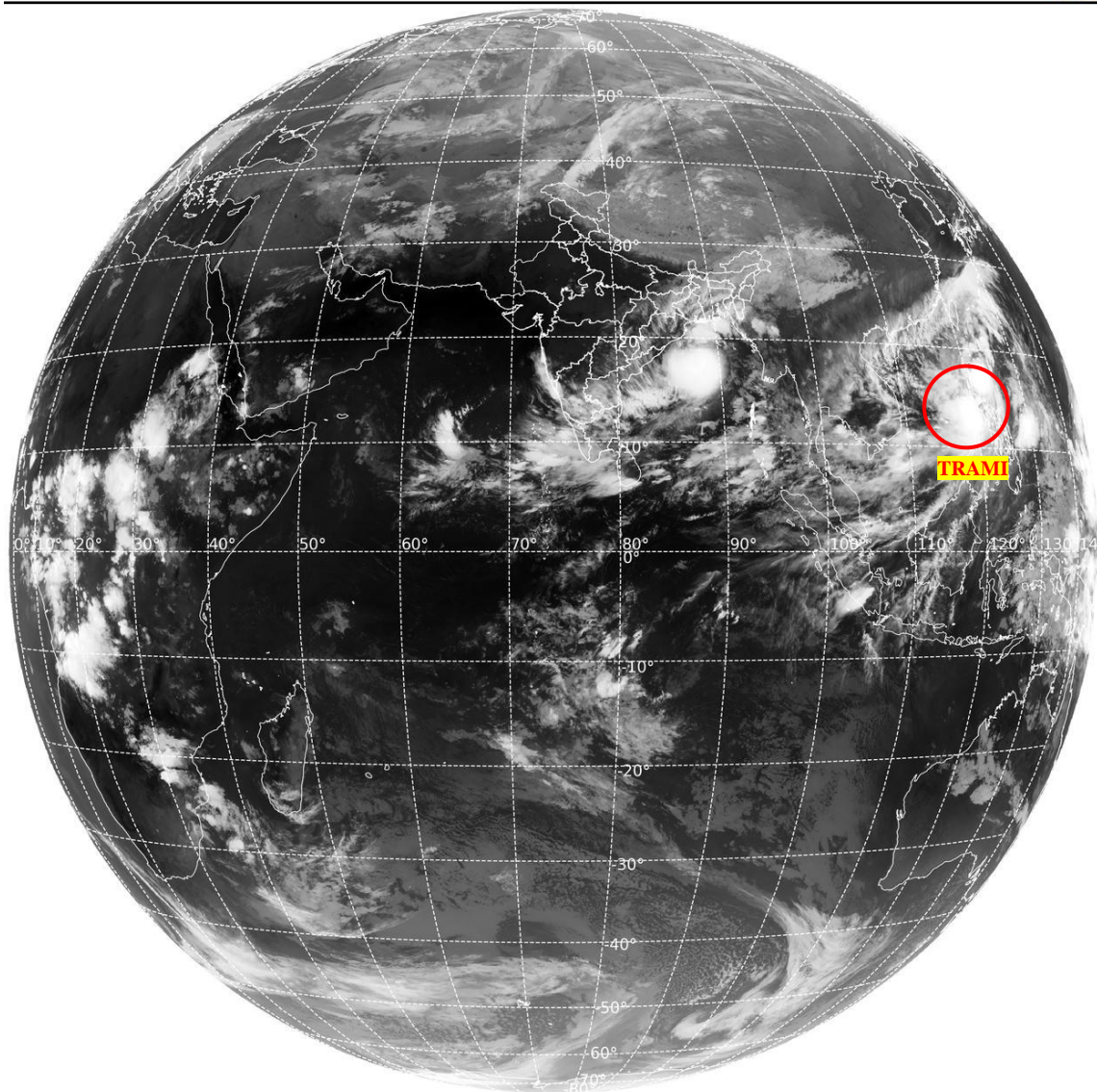
BAY OF BENGAL & ANDAMAN SEA:-

BKN LOW/MED CLOUDS WITH EMBDD INT TO V INT CONVTN OVER NORTH & CENTRAL BAY (MINIMUM **CTT MINUS 80-93 DEG CEL) (.) SCT LOW/MED CLOUDS WITH EMBDD MOD TO INT CONVTN OVER S BAY ANDAMAN SEA (.)**

CLOUDS DESCRIPTION OUTSIDE INDIA:-

SAT : INSAT-3DR IMG
Thermal Infrared1 Count 10.8 um
L1B FULL DISK

23-10-2024/(1645 to 1712) GMT
23-10-2024/(2215 to 2242) IST



461

961

IMD, DELHI

VORTEX (TRAMI) OVER PHILIPPINES SEA:-

VORTEX (TRAMI**) OVER PHILIPPINES SEA WITH CENTERED NEAR **17.3N/122.0E** (.) OVERLAND (.) ASSTD BKN LOW/MED CLOUDS WITH EMBDD INT TO V INT CONVTN OVER AREA BET LAT 10.0N TO 18.0N LONG 117.0E TO 125.0E & PHILIPPINES (.)**

SCT LOW/MED CLOUDS WITH EMBDD MOD TO INT CONVTN OVER SRI LANKA PALK STR GULF OF MANNAR MALDIVES N PAK TIBET CHINA EAST CHINA SEA MYANMAR THAILAND GULF OF THAILAND CAMBODIA LAOS VIETNAM GULF OF TONKIN HAINAN TAIWAN SUMATRA STR OF MALACCA MALAYSIA BORNEO SOUTH CHINA SEA JAVA ILS & SEA PHILIPPINES SULU SEA SOUTH MOZAMBIQUE CHANNEL AND OVER INDIAN OCEAN BET LAT 5.0S TO 25.0S LONG 70.0E TO 85.0E (.)

TOO 24/0040 HRS IST=

NNNN

LEGEND:-

REGION	NORTH	J&K HP PJB HARY DLH UP UTRKND	
	EAST	BHR JHRKND CHTGH ORS WB SKM NORTH- EAST STATES	
	WEST	RAJ MP GUJ MAHA GOA	
	SOUTH	TLNGN AP KRNTK KER TN LKSDP ANDAMAN & NICOBAR ILS	
CLOUD DISTRIBUTION	ISOL	ISOLATED (LESS THAN 25%)	
	SCT	SCATTERED (25 TO 50%)	
	BKN	BROKEN (51 TO 75%)	
	SLD	SOLID (GREATER THAN 75%)	
CLOUDS TOP TEMPERATURE	CTT	CLOUD TOP TEMPERATURE	
CONVECTION	WK CONV TN	WEAK CONVECTION (CTT GREATER THAN -25°C)	
	MOD CONV TN	MODERATE CONVECTION (CTT BETWEEN -25°C TO -40°C)	
	INT CONV TN	INTENSE CONVECTION (CTT BETWEEN -41°C TO -70°C)	
	V INT CONV TN	VERY INTENSE CONVECTION (CTT LESS THAN -70°C)	
METEOROLOGICAL SUB- DIVISIONS, STATES & UNION TERITORIES	ARUPR	ARUNACHAL PRADESH	
	BHR	BIHAR	
	CHTGH	CHHATTISGARH	
	COTL AP	COASTAL ANDHRA PRADESH	
	COTL KRNTK	COASTAL KARNATAKA	
	COTL ORS	COASTAL ORISSA	
	GUJ	GUJARAT	
	GWB	GANGETIC WEST BENGAL	
	HARY	HARYANA	
	DLH	DELHI	
	HP	HIMACHAL PRADESH	
	J&K	JAMMU AND KASHMIR	
	JHRKND	JHARKHAND	
	KER	KERALA	
	KKN	KONKAN	
	LKSDP	LAKSHADWEEP	
	M MAHA	MADHYA MAHARASHTRA	
	MAHA	MAHARASHTRA	
	MANI	MANIPUR	
	MEGHA	MEGHALAYA	
	MIZO	MIZORAM	
	MP	MADHYA PRADESH	
		MRTHWD	MARATHWADA
		NAGA	NAGALAND
N COTL AP		NORTH COASTAL ANDHRA PRADESH	
NIK		NORTH INTERIOR KARNATAKA	

	ORS	ORISSA
	PJB	PUNJAB
	RAJ	RAJASTHAN
	RYLSM	RAYALASEEMA
	SAU & KUTCH	SAURASHTRA & KUTCH
	SHWB	SUB-HIMALAYAN WEST BENGAL
	SIK	SOUTH INTERIOR KARNATAKA
	SKM	SIKKIM
	TLNGN	TELANGANA
	TN	TAMIL NADU
	TRP	TRIPURA
	UP	UTTAR PRADESH
	UTRKND	UTTARAKHAND
	VID	VIDHARBHA
	SHWB	SUB HIMALAYAN WEST BENGAL
	GWB	GANGETIC WEST BENGAL
	ARSEA	ARABIAN SEA
	ILS	ISLANDS
MISCELLANEOUS	ASSW	IN ASSOCIATION WITH
	ASSTD	ASSOCIATED
	LLC	LOW LEVEL CIRCULATION
	EMBDD	EMBEDDED
	N/HOOD	NEIGHBOURHOOD
	EXT	EXTREME