



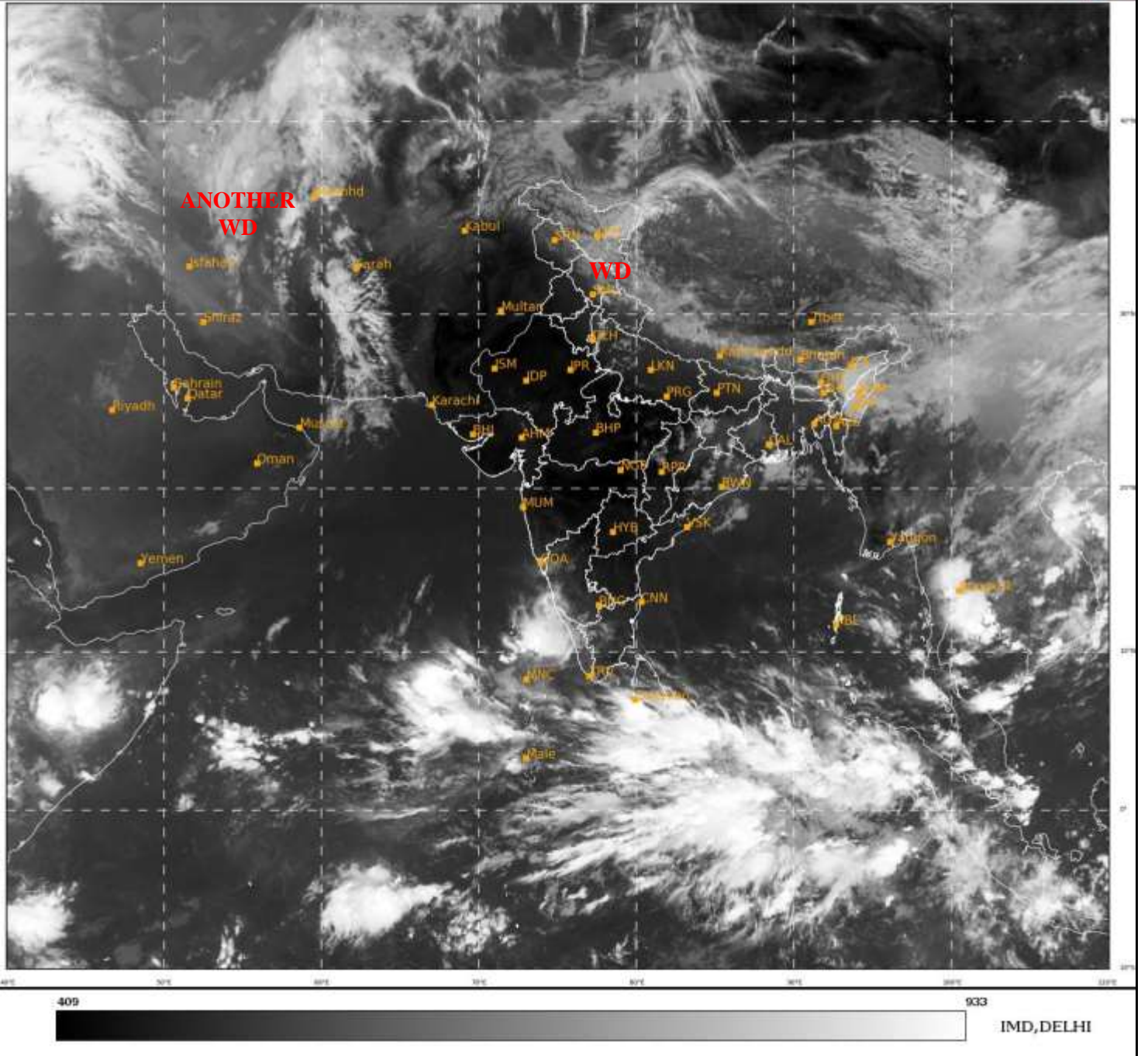
भारत मौसम विज्ञान विभाग  
पृथ्वी विज्ञान मंत्रालय  
India Meteorological Department  
Ministry of Earth Sciences



**SATELLITE BULLETIN BASED ON SATELLITE  
IMAGERIES AND PRODUCTS**  
**01.05.2022 TIME 0300 UTC**

SAT : INSAT-3D IMG  
IMG\_TIR1 10.8 um  
L1C Mercator

01-05-2022/(0300 to 0326) GMT  
01-05-2022/(0830 to 0856) IST



TCIN50 DEMS 010300

SATELLITE BULLETIN BASED ON INSAT-3D PIC OF 010300 UTC (.)

REGION COVERED BETWEEN LAT 50.0°N TO 30.0°S AND LONG 40.0°E TO 125.0°E (.)

**SALIENT FEATURES:-**

**WESTERN DISTURBANCE (WD):-**

SCT MULTILAYERED CLOUDS OVER E LADAKH HP UTRKND NW UP NEPAL TIBET ADJ CHINA  
ASSW **WD** OVER THE AREA (.)

SCT MULTILAYERED CLOUDS OVER S CASPIAN SEA IRAN W AFGAN SW PAK AND N/HOOD IN  
ASSW **ANOTHER WD** OVER THE AREA (.)

**THUNDERSTORM / CONVECTION ACTIVITY:-**

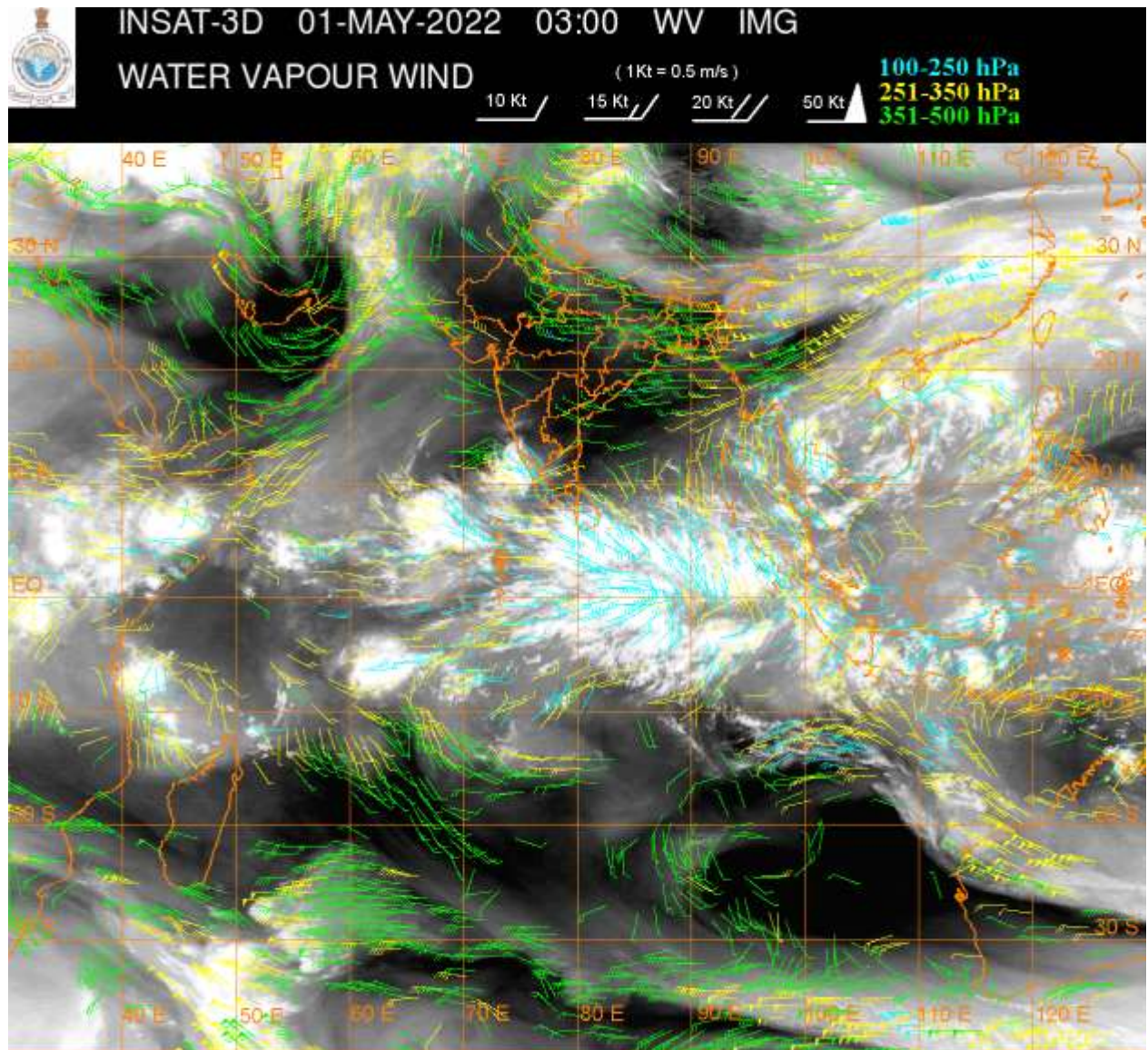
THUNDERSTORM / CONVECTIVE ACTIVITIES OBSERVED OVER E LADAKH E ORS ASSAM  
NAGA MANI COTL KRNTK N KER LKSDP (.)

## PRECIPITATION NOWCASTING:-

(BASED ON SCOPE NOWCASTING TOOL AT 0300 UTC AT A LEAD TIME OF 03 HRS (MM/HR) :-

RAINFALL UP TO **15-20 MM** OBSERVED OVER LKSDP ILS AREA (.)

RAINFALL UP TO **0.5 MM** OBSERVED OVER NICOBAR ILS (.)



## CLOUDS DESCRIPTION WITHIN INDIA:-

### NORTH:-

SCT LOW/MED CLOUDS WITH EMBDD MOD TO INT CONVTN OVER NE LADAKH (.) SCT LOW/MED CLOUDS WITH EMBDD ISOL WK TO MOD CONVTN OVERS REST LADAKH NW & E HP UTRKND EXT SE HARY NW UP (.) SCT LOW/MED CLOUDS OVER N N J&K S UP (.)

### EAST:-

SCT TO BKN LOW/MED CLOUDS WITH EMBDD WK TO MOD CONVTN OVER SW BHR JHRKND N CHTGH ORS S GWB N SHWB SKM ARUPR ASSAM MEGHA NAGA MANI & BD (.) SCT LOW/MED CLOUDS OVER EXT NE BHR S CHTGH N GWB MIZO TRP (.)

### WEST:-

SCT LOW/MED CLOUDS WITH EMBDD WK CONVTN OVER EXT SE MP GOA (.) SCT LOW/MED CLOUDS OVER E RAJ REST MP NE GUJ E VID EXT SOUTH MADHYA MAHA ADJ MRTHWD KKN (.)

### SOUTH:-

SCT LOW/MED CLOUDS WITH EMBDD INT TO V INT CONVTN OVER LKSDP ILS (.) SCT LOW/MED CLOUDS WITH EMBDD WK TO MOD CONVTN OVER KRNTK KER TN NICOBAR ILS (.) SCT LOW/MED CLOUDS OVER TLNGN N COTL AP ANDAMAN ILS (.)

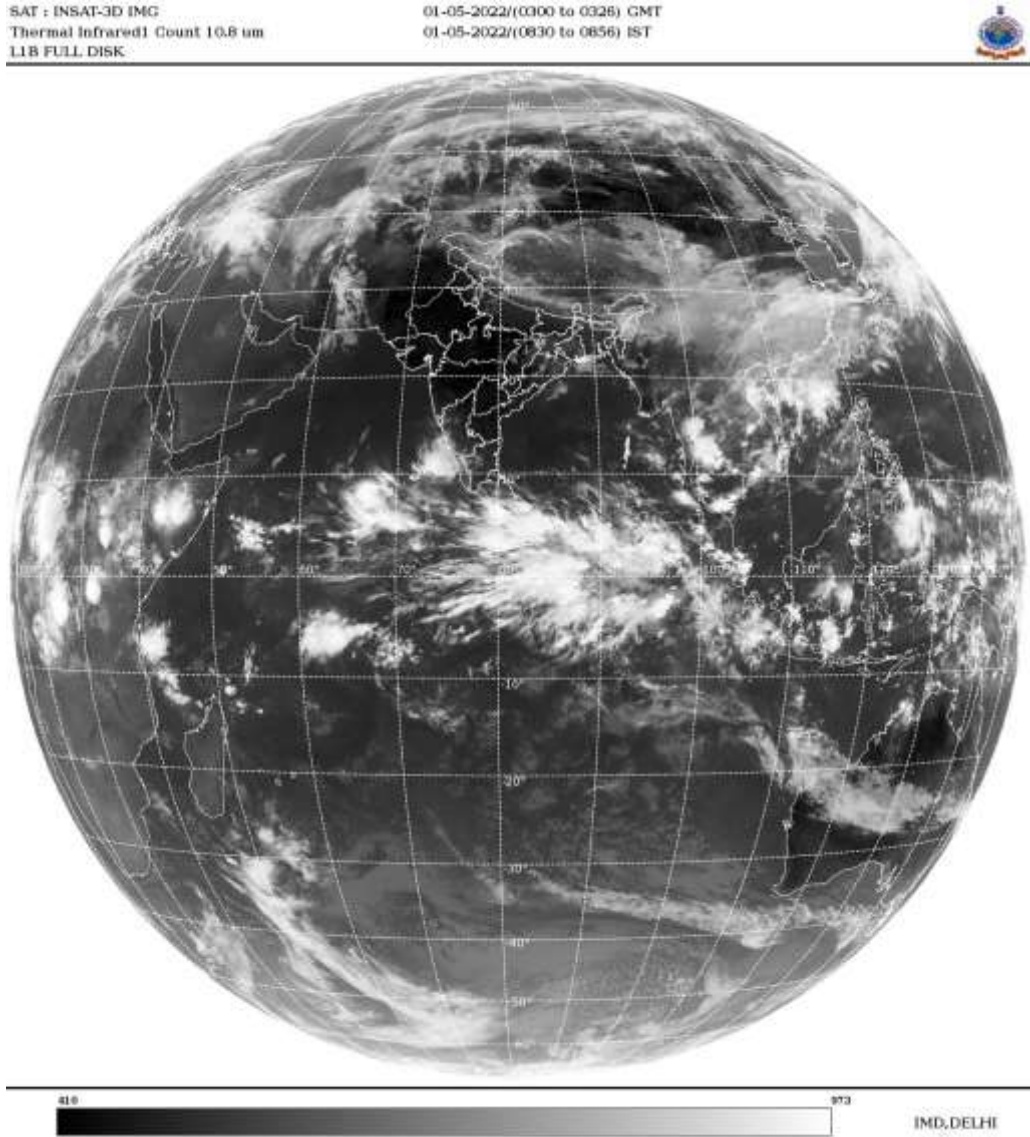
### ARABIAN SEA:-

SCT TO BKN LOW/MED CLOUDS WITH EMBDD INT TO V INT CONVTN OVER SE ARSEA LKSDP ILS AREA & COMORIN AREA (.) SCT LOW/MED CLOUDS WITH EMBDD MOD TO INT CONVTN OVER EC ARSEA OFF KRNTK COAST AND WK TO MOD CONVTN OVER NW ARSEA (.)

**BAY OF BENGAL & ANDAMAN SEA:-**

**SCT LOW/MED CLOUDS WITH EMBDD INT TO V INT CONVTN OVER SOUTH BAY AND MOD TO INT CONVTN OVER ANDAMAN SEA (.) SCT LOW/MED CLOUDS WITH EMBDD WK TO MOD CONVTN OVER NORTH BAY (.) SCT LOW/MED CLOUDS OVER CENTRAL BAY (.)**

**LOUDS DESCRIPTION OUTSIDE INDIA:-**



**SCT LOW/MED CLOUDS WITH EMBDD MOD TO INT CONVTN OVER SRI LANKA GULF OF MANNAR MALDIVES NEPAL TIBET CHINA YELLOW SEA E CHINA SEA TAIWAN MYANMAR THAILAND GULF OF THAILAND CAMBODIA LAOS VIETNAM GULF OF TONKIN HAINAN SUMATRA STR OF MALACCA MALAYSIA BORNEO SOUTH CHINA SEA JAVA ILS & SEA CELEBES ILS & SEA PHILIPPINES SULU SEA N MOZAMBIQUE CHANNEL AND OVER INDIAN OCEAN BET LAT 5.0N TO 15.0S LONG 50.0E TO 115.0E (.)**

**TOO 01/0940 HRS IST=**

**NNNN**

**LEGEND:-**

REGION	NORTH	J&K HP PJB HARY DLH UP UTRKND
	EAST	BHR JHRKND CHTGH OR WB SKM NORTH- EAST STATES
	WEST	RAJ MP GUJ MAHA GOA
	SOUTH	TLNGN AP KRNTK KER TN LKSDP ANDAMAN & NICOBAR ILS

<b>CLOUD DISTRIBUTION</b>	<b>ISOL</b>	<b>ISOLATED (LESS THAN 25%)</b>	
	<b>SCT</b>	<b>SCATTERED (25 TO 50%)</b>	
	<b>BKN</b>	<b>BROKEN (51 TO 75%)</b>	
	<b>SLD</b>	<b>SOLID (GREATER THAN 75%)</b>	
<b>CLOUDS TOP TEMPERATURE</b>	<b>CTT</b>	<b>CLOUD TOP TEMPERATURE</b>	
<b>CONVECTION</b>	<b>WK CONVTN</b>	<b>WEAK CONVECTION (CTT GREATER THAN -25°C)</b>	
	<b>MOD CONVTN</b>	<b>MODERATE CONVECTION (CTT BETWEEN -25°C TO -40°C)</b>	
	<b>INT CONVTN</b>	<b>INTENSE CONVECTION (CTT BETWEEN -41°C TO -70°C)</b>	
	<b>V INT CONVTN</b>	<b>VERY INTENSE CONVECTION (CTT LESS THAN -70°C)</b>	
<b>METEOROLOGICAL SUB-DIVISIONS, STATES &amp; UNION TERRITORIES</b>	<b>ARUPR</b>	<b>ARUNACHAL PRADESH</b>	
	<b>BHR</b>	<b>BIHAR</b>	
	<b>CHTGH</b>	<b>CHHATTISGARH</b>	
	<b>COTL AP</b>	<b>COASTAL ANDHRA PRADESH</b>	
	<b>COTL KRNTK</b>	<b>COASTAL KARNATAKA</b>	
	<b>COTL ORS</b>	<b>COASTAL ORISSA</b>	
	<b>GUJ</b>	<b>GUJARAT</b>	
	<b>GWB</b>	<b>GANGETIC WEST BENGAL</b>	
	<b>HARY</b>	<b>HARYANA</b>	
	<b>DLH</b>	<b>DELHI</b>	
	<b>HP</b>	<b>HIMACHAL PRADESH</b>	
	<b>J&amp;K</b>	<b>JAMMU AND KASHMIR</b>	
	<b>JHRKND</b>	<b>JHARKHAND</b>	
	<b>KER</b>	<b>KERALA</b>	
	<b>KKN</b>	<b>KONKAN</b>	
	<b>LKSDP</b>	<b>LAKSHADWEEP</b>	
	<b>M MAHA</b>	<b>MADHYA MAHARASHTRA</b>	
	<b>MAHA</b>	<b>MAHARASHTRA</b>	
	<b>MANI</b>	<b>MANIPUR</b>	
	<b>MEGHA</b>	<b>MEGHALAYA</b>	
	<b>MIZO</b>	<b>MIZORAM</b>	
	<b>MP</b>	<b>MADHYA PRADESH</b>	
		<b>MRTHWD</b>	<b>MARATHWADA</b>
		<b>NAGA</b>	<b>NAGALAND</b>
<b>N COTL AP</b>		<b>NORTH COASTAL ANDHRA PRADESH</b>	
<b>NIK</b>		<b>NORTH INTERIOR KARNATAKA</b>	
<b>ORS</b>		<b>ORISSA</b>	
<b>PJB</b>		<b>PUNJAB</b>	
<b>RAJ</b>		<b>RAJASTHAN</b>	
<b>RYLSM</b>		<b>RAYALASEEMA</b>	
<b>SAU &amp; KUTCH</b>		<b>SAURASHTRA &amp; KUTCH</b>	
<b>SHWB</b>		<b>SUB-HIMALAYAN WEST BENGAL</b>	
<b>SIK</b>		<b>SOUTH INTERIOR KARNATAKA</b>	
<b>SKM</b>		<b>SIKKIM</b>	

	<b>TLNGN</b>	<b>TELANGANA</b>
	<b>TN</b>	<b>TAMIL NADU</b>
	<b>TRP</b>	<b>TRIPURA</b>
	<b>UP</b>	<b>UTTAR PRADESH</b>
	<b>UTRKND</b>	<b>UTTARAKHAND</b>
	<b>VID</b>	<b>VIDHARBHA</b>
	<b>SHWB</b>	<b>SUB HIMALAYAN WEST BENGAL</b>
	<b>GWB</b>	<b>GANGETIC WEST BENGAL</b>
	<b>ARSEA</b>	<b>ARABIAN SEA</b>
	<b>ILS</b>	<b>ISLANDS</b>
<b>MISCELLANEOUS</b>	<b>ASSW</b>	<b>IN ASSOCIATION WITH</b>
	<b>ASSTD</b>	<b>ASSOCIATED</b>
	<b>LLC</b>	<b>LOW LEVEL CIRCULATION</b>
	<b>EMBDD</b>	<b>EMBEDDED</b>
	<b>N/HOOD</b>	<b>NEIGHBOURHOOD</b>
	<b>EXT</b>	<b>EXTREME</b>