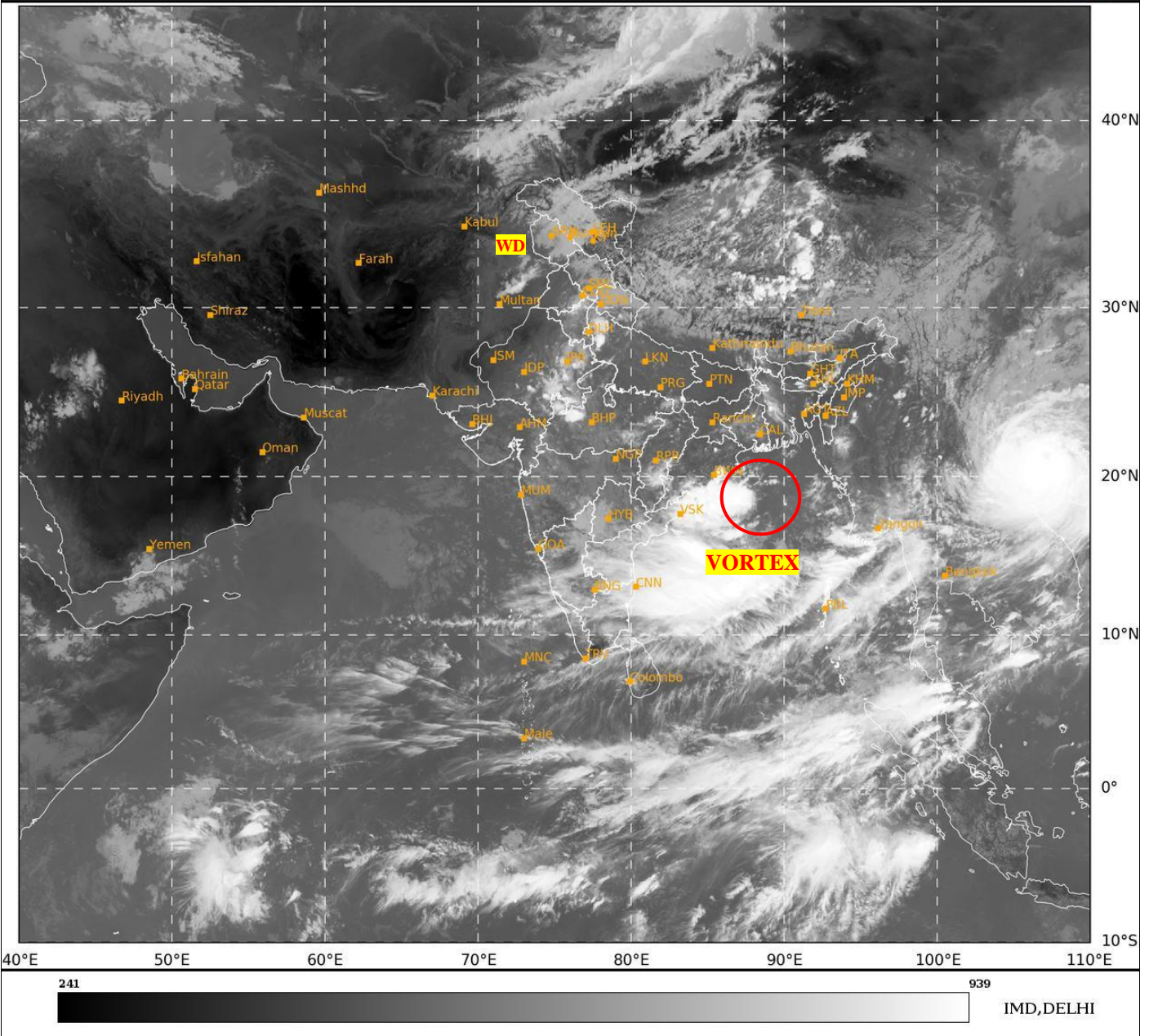




**SATELLITE BULLETIN BASED ON SATELLITE  
IMAGERIES AND PRODUCTS**  
**07.09.2024 TIME 0600 UTC**

SAT : INSAT-3DR IMG  
IMG\_TIR1 10.8 um  
LIC Mercator

07-09-2024/(0615 to 0642) GMT  
07-09-2024/(1145 to 1212) IST



TCIN50 DEMS 070600

SATELLITE BULLETIN BASED ON INSAT-3DR PIC OF 070615 UTC (.)

REGION COVERED BETWEEN LAT 50.0°N TO 35.0°S AND LONG 40.0°E TO 125.0°E (.)

**SALIENT FEATURES:-**

**VORTEX OVER NORTH WEST ADJ CENTRAL BAY & N/HOOD:-**

LLC OVER NW ADJ CENTRAL BAY HAS INTENSIFIED AND NOW SEEN AS VORTEX OVER THE SAME REGION (.) ASSTD SCT TO BKN LOW/MED CLOUDS WITH EMBDD INT TO V INT CONVTN OVER NORTH & CENTRAL BAY (MINIMUM **CTT MINUS 85-93 DEG CEL**) (.)

**WESTERN DISTURBANCE (WD):-**

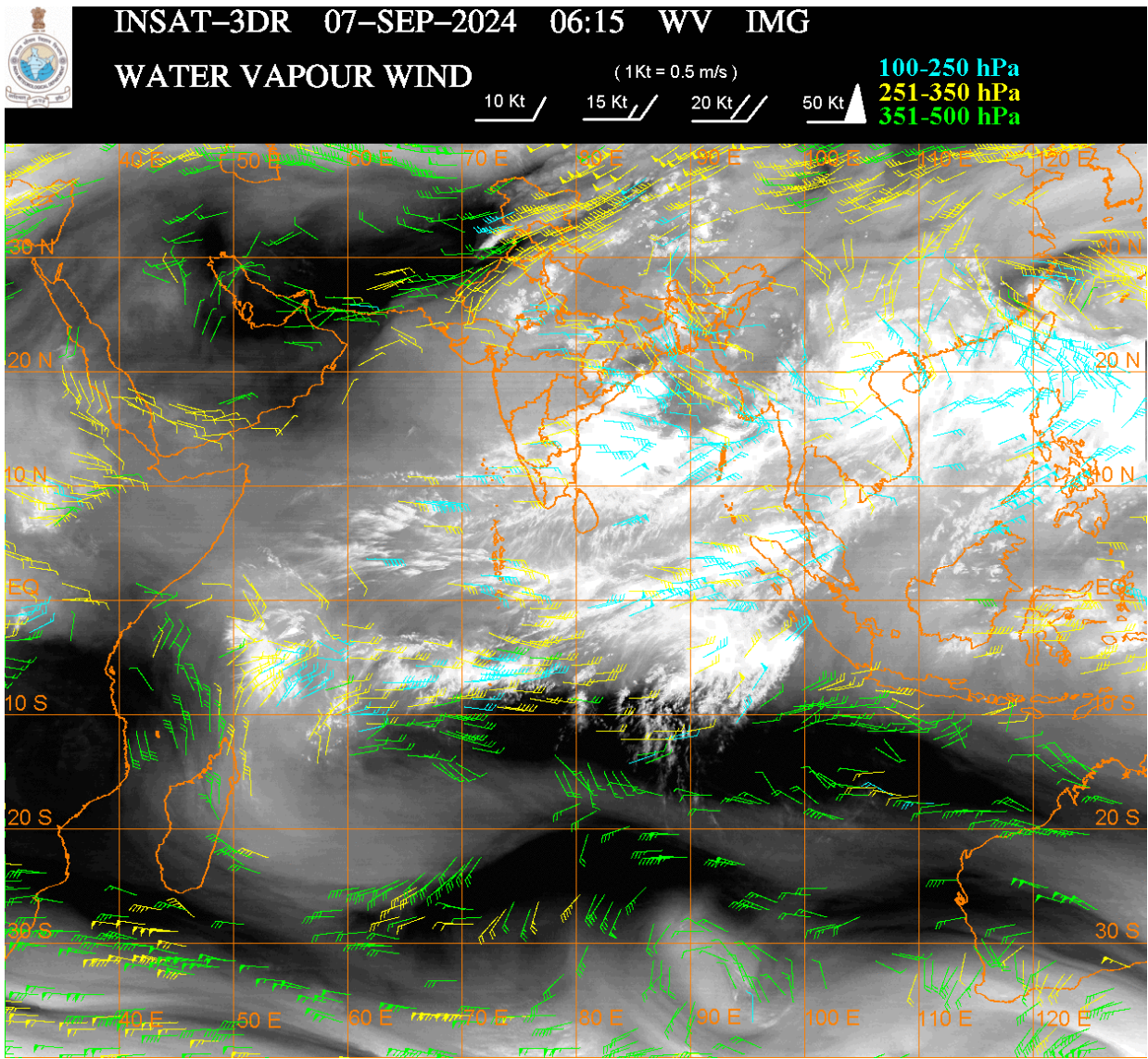
SCT MULTILAYERED CLOUDS OVER N PAK LADAKH J&K HP PJB HARY DLH NW UP UTRKND TIBET ADJ CHINA IN ASSW **WD** OVER THE AREA (.)

**CONVECTIVE / THUNDERSTORM ACTIVITY:-**

INTENSE TO VERY INTENSE CONVECTIVE / THUNDERSTORM ACTIVITY OBSERVED OVER NW UP E ORS N COTL AP (MINIMUM **CTT MINUS 70-90 DEG CEL**) (.)



**MODERATE TO INTENSE CONVECTIVE / THUNDERSTORM ACTIVITY OBSERVED OVER EXT N HARY SE UP CHTGH SW ORS N GWB SHWB SKM C ASSAM MEGHA E RAJ NW MP RYLSM S COTL AP S COTL KRNTK N KER N TN (MINIMUM CTT MINUS 50-70 DEG CEL) (.)**



**CLOUDS DESCRIPTION WITHIN INDIA:-**

**NORTH:-**

**SCT LOW/MED CLOUDS WITH EMBDD INT TO V INT CONVTN OVER NW UP (.) SCT LOW/MED CLOUDS WITH EMBDD MOD TO INT CONVTN OVER EXT N HARY SE UP AND WK TO MOD CONVTN OVER LADAKH J&K HP UTRKND E PJB REST HARY DLH SW UP (.) SCT LOW/MED CLOUDS OVER W PJB NE UP (.)**

**EAST:-**

**SCT LOW/MED CLOUDS WITH EMBDD INT TO V INT CONVTN OVER E ORS (.) SCT LOW/MED CLOUDS WITH EMBDD MOD TO INT CONVTN OVER CHTGH SW ORS N GWB SHWB SKM C ASSAM MEGHA AND ISOL WK TO MOD CONVTN OVER NE BHR SE JHRKND S GWB REST ASSAM ARUPR E MEGHA NAGA S MIZO (.)SCT LOW/MED CLOUDS OVER REST BHR N JHRKND MANI TRP (.)**

**WEST:-**

**SCT LOW/MED CLOUDS WITH EMBDD MOD TO INT CONVTN OVER E RAJ NW MP AND WK TO MOD CONVTN OVER E MP E VID EXT E GUJ (.) SCT LOW/MED CLOUDS OVER W RAJ REST GUJ SW MP REST MAHA & GOA (.)**

**SOUTH:-**

**SCT LOW/MED CLOUDS WITH EMBDD INT TO V INT CONVTN OVER N COTL AP AND MOD TO INT CONVTN OVER RYLSM S COTL AP S COTL KRNTK N KER N TN (.) SCT LOW/MED CLOUDS WITH EMBDD ISOL WK TO MOD CONVTN OVER REST KRNTK TLNGN S KER S TN LKSDP & NICOBAR ILS (.)**

**ARABIAN SEA:-**

**SCT LOW/MED CLOUDS WITH EMBDD ISOL WK TO MOD CONVTN OVER SOUTH ARSEA LKSDP ILS AREA MALDIVES AREA & COMORIN AREA (.)**

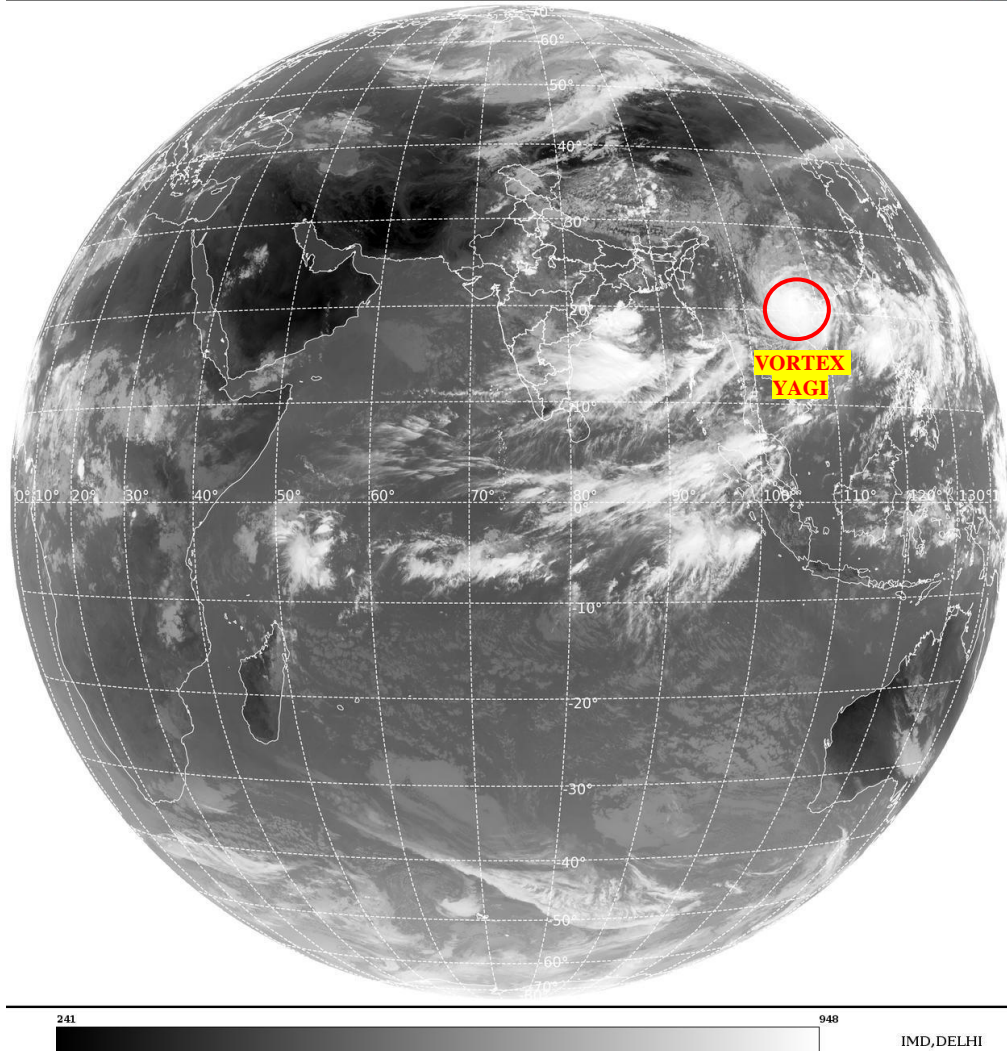
**BAY OF BENGAL & ANDAMAN SEA:-**

SCT LOW/MED CLOUDS WITH EMBDD INT TO V INT CONVTN OVER BAY NORTH ANDAMAN SEA (.)SCT LOW/MED CLOUDS WITH EMBDD MOD TO INT CONVTN OVER S ANDAMAN SEA GULF OF MARTABAN & TENASSERIM COAST (.)

**CLOUDS DESCRIPTION OUTSIDE INDIA:-**

SAT : INSAT-3DR IMG  
Thermal Infrared1 Count 10.8 um  
LIB FULL DISK

07-09-2024/(0615 to 0642) GMT  
07-09-2024/(1145 to 1212) IST



**VORTEX (YAGI) OVER SOUTH CHINA SEA:-**

VORTEX (YAGI) OVER SOUTH CHINA SEA (AREA F05) CENTERED NEAR 20.7N / 107.2E (.) INTENSITY T6.0/6.0 (.) EYE PATTERN (.) CORRESPONDING MAXIMUM SUSTAINED WINDS 90-119 KTS (.) ASSTD BKN LOW/MED CLOUDS WITH EMBDD INT TO V INT CONVTN OVER AREA BET LAT 15.0N TO 22.0N AND LONG 103.0E TO 113.0E & GULF OF TONKIN HAINAN (.)

SCT LOW/MED CLOUDS WITH EMBDD MOD TO INT CONVTN OVER N SRI LANKA GULF OF MANNAR MALDIVES N PAK NEPAL BHUTAN TIBET CHINA EAST CHINA SEA TAIWAN MYANMAR THAILAND GULF OF THAILAND CAMBODIA LAOS VIETNAM GULF OF TONKIN HAINAN SUMATRA STR OF MALACCA MALAYSIA BORNEO SOUTH CHINA SEA CELEBES ILS & SEA PHILIPPINES SULU SEA N MADAGASCAR AND OVER INDIAN OCEAN BET LAT 5.0N TO 10.0S LONG 45.0E TO 100.0E (.)

TOO 07/1310 HRS IST=

NNNN

**LEGEND:-**

<b>REGION</b>	<b>NORTH</b>	<b>J&amp;K HP PJB HARY DLH UP UTRKND</b>
	<b>EAST</b>	<b>BHR JHRKND CHTGH OR WB SKM NORTH- EAST STATES</b>
	<b>WEST</b>	<b>RAJ MP GUJ MAHA GOA</b>
	<b>SOUTH</b>	<b>TLNGN AP KRNTK KER TN LKSDP ANDAMAN &amp; NICOBAR ILS</b>
<b>CLOUD DISTRIBUTION</b>	<b>ISOL</b>	<b>ISOLATED (LESS THAN 25%)</b>
	<b>SCT</b>	<b>SCATTERED (25 TO 50%)</b>
	<b>BKN</b>	<b>BROKEN (51 TO 75%)</b>
	<b>SLD</b>	<b>SOLID (GREATER THAN 75%)</b>
<b>CLOUDS TOP TEMPERATURE</b>	<b>CTT</b>	<b>CLOUD TOP TEMPERATURE</b>
<b>CONVECTION</b>	<b>WK CONVTN</b>	<b>WEAK CONVECTION (CTT GREATER THAN -25°C)</b>
	<b>MOD CONVTN</b>	<b>MODERATE CONVECTION (CTT BETWEEN -25°C TO -40°C)</b>
	<b>INT CONVTN</b>	<b>INTENSE CONVECTION (CTT BETWEEN -41°C TO -70°C)</b>
	<b>V INT CONVTN</b>	<b>VERY INTENSE CONVECTION (CTT LESS THAN -70°C)</b>
<b>METEOROLOGICAL SUB- DIVISIONS, STATES &amp; UNION TERITORIES</b>	<b>ARUPR</b>	<b>ARUNACHAL PRADESH</b>
	<b>BHR</b>	<b>BIHAR</b>
	<b>CHTGH</b>	<b>CHHATTISGARH</b>
	<b>COTL AP</b>	<b>COASTAL ANDHRA PRADESH</b>
	<b>COTL KRNTK</b>	<b>COASTAL KARNATAKA</b>
	<b>COTL ORS</b>	<b>COASTAL ORISSA</b>
	<b>GUJ</b>	<b>GUJARAT</b>
	<b>GWB</b>	<b>GANGETIC WEST BENGAL</b>
	<b>HARY</b>	<b>HARYANA</b>
	<b>DLH</b>	<b>DELHI</b>
	<b>HP</b>	<b>HIMACHAL PRADESH</b>
	<b>J&amp;K</b>	<b>JAMMU AND KASHMIR</b>
	<b>JHRKND</b>	<b>JHARKHAND</b>
	<b>KER</b>	<b>KERALA</b>
	<b>KKN</b>	<b>KONKAN</b>
	<b>LKSDP</b>	<b>LAKSHADWEEP</b>
	<b>M MAHA</b>	<b>MADHYA MAHARASHTRA</b>
	<b>MAHA</b>	<b>MAHARASHTRA</b>
	<b>MANI</b>	<b>MANIPUR</b>
	<b>MEGHA</b>	<b>MEGHALAYA</b>
	<b>MIZO</b>	<b>MIZORAM</b>
	<b>MP</b>	<b>MADHYA PRADESH</b>
		<b>MRTHWD</b>
<b>NAGA</b>		<b>NAGALAND</b>
<b>N COTL AP</b>		<b>NORTH COASTAL ANDHRA PRADESH</b>
<b>NIK</b>		<b>NORTH INTERIOR KARNATAKA</b>
<b>ORS</b>		<b>ORISSA</b>

	<b>PJB</b>	<b>PUNJAB</b>
	<b>RAJ</b>	<b>RAJASTHAN</b>
	<b>RYLSM</b>	<b>RAYALASEEMA</b>
	<b>SAU &amp; KUTCH</b>	<b>SAURASHTRA &amp; KUTCH</b>
	<b>SHWB</b>	<b>SUB-HIMALAYAN WEST BENGAL</b>
	<b>SIK</b>	<b>SOUTH INTERIOR KARNATAKA</b>
	<b>SKM</b>	<b>SIKKIM</b>
	<b>TLNGN</b>	<b>TELANGANA</b>
	<b>TN</b>	<b>TAMIL NADU</b>
	<b>TRP</b>	<b>TRIPURA</b>
	<b>UP</b>	<b>UTTAR PRADESH</b>
	<b>UTRKND</b>	<b>UTTARAKHAND</b>
	<b>VID</b>	<b>VIDHARBHA</b>
	<b>SHWB</b>	<b>SUB HIMALAYAN WEST BENGAL</b>
	<b>GWB</b>	<b>GANGETIC WEST BENGAL</b>
	<b>ARSEA</b>	<b>ARABIAN SEA</b>
	<b>ILS</b>	<b>ISLANDS</b>
<b>MISCELLANEOUS</b>	<b>ASSW</b>	<b>IN ASSOCIATION WITH</b>
	<b>ASSTD</b>	<b>ASSOCIATED</b>
	<b>LLC</b>	<b>LOW LEVEL CIRCULATION</b>
	<b>EMBDD</b>	<b>EMBEDDED</b>
	<b>N/HOOD</b>	<b>NEIGHBOURHOOD</b>
	<b>EXT</b>	<b>EXTREME</b>