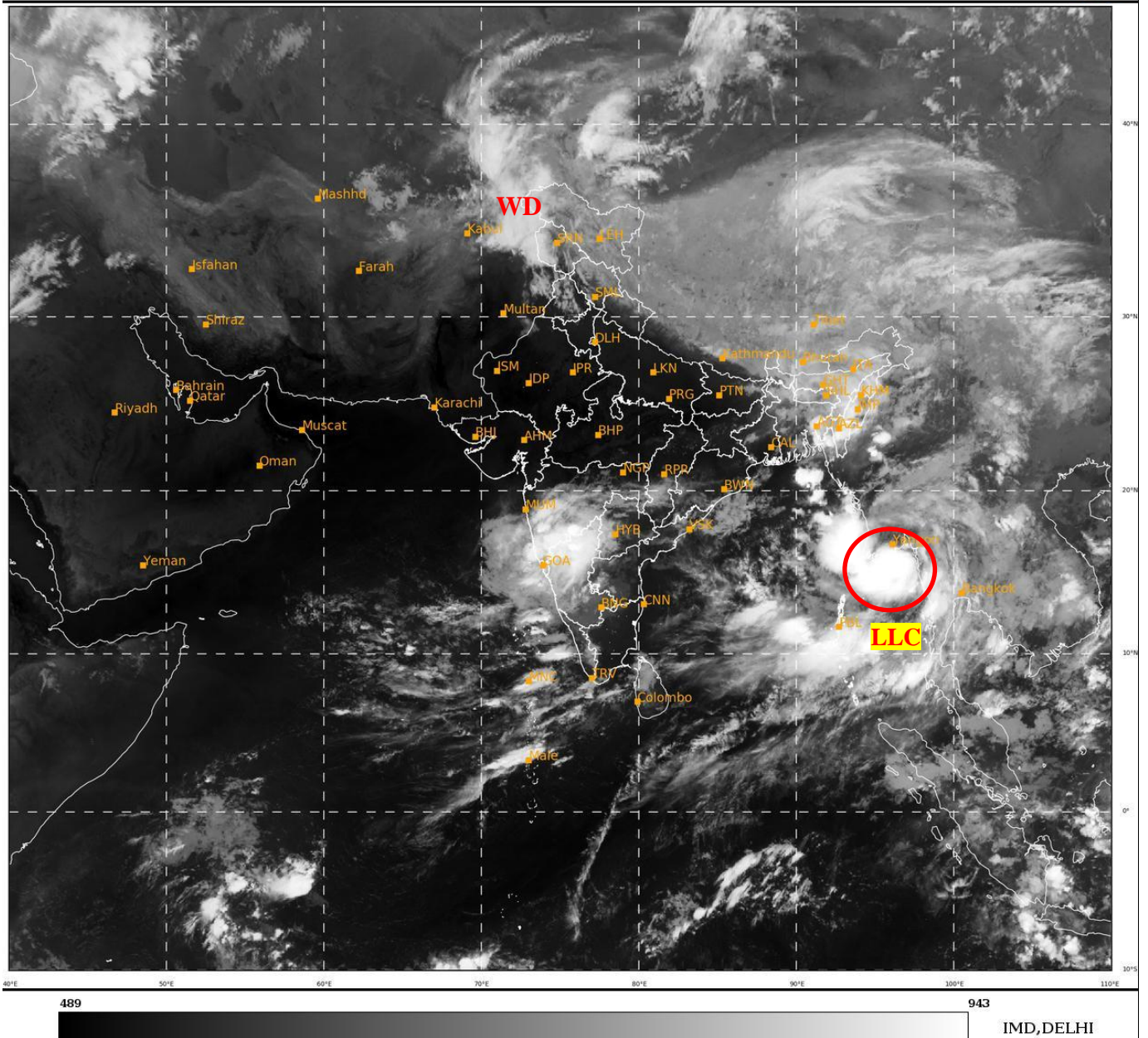




**SATELLITE BULLETIN BASED ON SATELLITE  
IMAGERIES AND PRODUCTS  
19.05.2022 TIME 2100 UTC**

SAT : INSAT-3D IMG  
IMG\_TIR1 10.8 um  
LIC Mercator

19-05-2022/(2100 to 2126) GMT  
20-05-2022/(0230 to 0256) IST



TCIN50 DEMS 192100

SATELLITE BULLETIN BASED ON INSAT-3D PIC OF 192100 UTC (.)

REGION COVERED BETWEEN LAT 50.0°N TO 30.0°S AND LONG 40.0°E TO 125.0°E (.)

**SALIENT FEATURES:-**

**LOW LEVEL CIRCULATION (LLC) OVER GULF OF MARTABAN AND N/HOOD:-**

LOW LEVEL CIRCULATION (LLC) OVER GULF OF MARTABAN AND N/HOOD (.) ASSTD SCT TO BKN LOW MED CLOUDS WITH EMBDD INT TO V INT CONVTN OVER S MYANMAR NORTH ANDAMAN SEA EC BAY (MINIMUM CTT **-93** DEG CEL) (.)

**WESTERN DISTURBANCE (WD):-**

SCT MULTILAYERED CLOUDS OVER N AFGAN N PAK LADAKH J&K HP PJB TIBET ADJ CHINA IN ASSW **WD** OVER THE AREA (.)

**THUNDERSTORM / CONVECTIVE ACTIVITY:-**

THUNDERSTORM / CONVECTIVE ACTIVITIES OBSERVED OVER NE STATES MAHA NIK & ANDAMAN ILS (.)



**CONVECTION OVER LAKSHADWEEP ILS AREA ADJ SE ARSEA:-**

SCT MODERATE TO INTENSE CONVECTION OVER LKSDP ILS AREA ADJ SE ARSEA DISORGANISED DURING LAST 06 HOURS (.) MINIMUM CTT MINUS 65 DEG C (.)

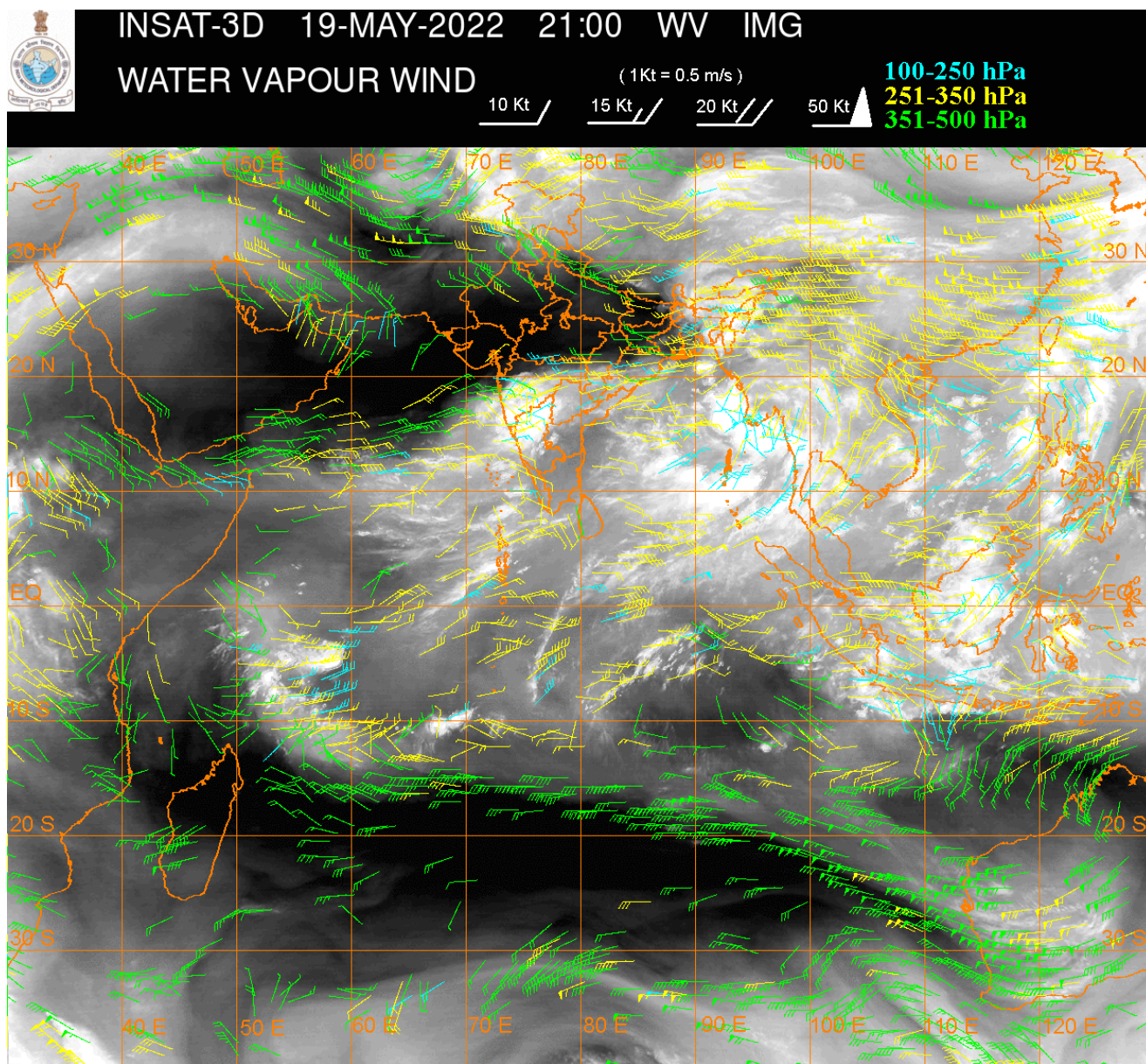
**PRECIPITATION NOWCASTING:-**

**(BASED ON SCOPE NOWCASTING TOOL AT 2100 UTC AT A LEAD TIME OF 03 HRS (MM/HR):-**

RAINFALL UPTO 10-20 MM LIKELY OVER MIZO SOUTH M MAHA S KKN NIK S ANDAMAN ILS (.)

RAINFALL UPTO 5-10 MM LIKELY OVER SW ORS NAGA MANI S MRTHWD GOA (.)

RAINFALL UPTO 0.5-5 MM LIKELY OVER NW LADAKH NE J&K S CHTGH N COTL AP REST KRNTK REST NE STATES S KER NICOBAR ILS (.)



**CLOUDS DESCRIPTION WITHIN INDIA:-**

**NORTH:-**

SCT LOW/MED CLOUDS WITH EMBDD MOD TO INT CONV'TN OVER LADAKH J&K AND ISOL WK TO MOD CONV'TN OVER HP PJB N UTRKND (.) ISOL TO SCT LOW/MED CLOUDS OVER S UTRKND (.)

**EAST:-**

BKN LOW/MED CLOUDS WITH EMBDD INT TO V INT CONV'TN OVER MANI MIZO (MINIMUM CTT MINUS 83 DEG CEL) (.) SCT LOW/MED CLOUDS WITH EMBDD MOD TO INT CONV'TN OVER REST NE STATES AND ISOL WK TO MOD CONV'TN OVER S CHTGH S ORS NE BHR GWB SKM SHWB (.) SCT LOW/MED CLOUDS OVER JHRKND N CHTGH N ORS W BHR (.)

**WEST:-**

BKN LOW/MED CLOUDS WITH EMBDD INT TO V INT CONV'TN OVER SOUTH MADHYA MAHA S KKN (MINIMUM CTT MINUS 93 DEG C) (.) SCT LOW/MED CLOUDS WITH EMBDD MD TO INT CONV'TN OVER GOA AND WK TO MOD CONV'TN OVER REST MAHA (.) SCT LOW/MED CLOUDS OVER NW RAJ S MP (.)

**SOUTH:-**

SCT TO BKN LOW/MED CLOUDS WITH EMBDD INT TO V INT CONVTN OVER NIK S ANDAMAN ILS (MINIMUM CTT MINUS 93 DEG C) (.) SCT LOW/MED CLOUDS WITH EMBDD MOD TO INT CONVTN OVER SW TLNGN & NICOBAR ILS AND WK TO MOD CONVTN OVER REST TLNGN N COTL AP RYLSM REST KRNTK LKSDP KER ADJ WC TN N ANDAMAN ILS (.) SCT LOW/MED CLOUDS OVER S COTL AP REST TN (.)

**ARABIAN SEA:-**

SCT LOW/MED CLOUDS WITH EMBDD MOD TO INT CONVTN OVER SE ARSEA ADJ EC ARSEA LKSDP ILS COMORIN AREA (.)

**BAY OF BENGAL & ANDAMAN SEA:-**

SCT TO BKN LOW/MED CLOUDS WITH EMBDD INT TO V INT CONVTN OVER E BAY ARAKAN COAST ANDAMAN SEA GULF OF MARTABAN (MINIMUM CTT MINUS 93 DEG C) (.) SCT LOW/MED CLOUDS WITH EMBDD MOD TO INT CONVTN OVER WC BAY AND WK TO MOD CONVTN OVER REST BAY (.)

**CLOUDS DESCRIPTION OUTSIDE INDIA:-**

SCT LOW/MED CLOUDS WITH EMBDD MOD TO INT CONVTN OVER MALDIVES N SRILANKA N PAK E NEPAL BHUTAN TIBET CHINA MYANMAR THAILAND GULF OF THAILAND CAMBODIA LAOS VIETNAM SUMATRA STR OF MALACCA MALAYSIA BORNEO SOUTH CHINA SEA JAVA ILS & SEA CELEBES ILS PHILIPPINES YELLOW SEA E CHINA SEA AND OVER INDIAN OCEAN BET LAT 5.0N TO 10.0S LONG 50.0E TO 90.0E (.)

TOO 20/0420 HRS IST=

NNNN

**LEGEND:-**

REGION	NORTH	J&K HP PJB HARY DLH UP UTRKND
	EAST	BHR JHRKND CHTGH OR WB SKM NORTH- EAST STATES
	WEST	RAJ MP GUJ MAHA GOA
	SOUTH	TLNGN AP KRNTK KER TN LKSDP ANDAMAN & NICOBAR ILS

CLOUD DISTRIBUTION	ISOL	ISOLATED (LESS THAN 25%)
	SCT	SCATTERED (25 TO 50%)
	BKN	BROKEN (51 TO 75%)
	SLD	SOLID (GREATER THAN 75%)
CLOUDS TOP TEMPERATURE	CTT	CLOUD TOP TEMPERATURE
CONVECTION	WK CONVTN	WEAK CONVECTION (CTT GREATER THAN -25°C)
	MOD CONVTN	MODERATE CONVECTION (CTT BETWEEN -25°C TO -40°C)
	INT CONVTN	INTENSE CONVECTION (CTT BETWEEN -41°C TO -70°C)
	V INT CONVTN	VERY INTENSE CONVECTION (CTT LESS THAN -70°C)

<b>METEOROLOGICAL SUB-DIVISIONS, STATES &amp; UNION TERRITORIES</b>	<b>ARUPR</b>	<b>ARUNACHAL PRADESH</b>	
	<b>BHR</b>	<b>BIHAR</b>	
	<b>CHTGH</b>	<b>CHHATTISGARH</b>	
	<b>COTL AP</b>	<b>COASTAL ANDHRA PRADESH</b>	
	<b>COTL KRNTK</b>	<b>COASTAL KARNATAKA</b>	
	<b>COTL ORS</b>	<b>COASTAL ORISSA</b>	
	<b>GUJ</b>	<b>GUJARAT</b>	
	<b>GWB</b>	<b>GANGETIC WEST BENGAL</b>	
	<b>HARY</b>	<b>HARYANA</b>	
	<b>DLH</b>	<b>DELHI</b>	
	<b>HP</b>	<b>HIMACHAL PRADESH</b>	
	<b>J&amp;K</b>	<b>JAMMU AND KASHMIR</b>	
	<b>JHRKND</b>	<b>JHARKHAND</b>	
	<b>KER</b>	<b>KERALA</b>	
	<b>KKN</b>	<b>KONKAN</b>	
	<b>LKSDP</b>	<b>LAKSHADWEEP</b>	
	<b>M MAHA</b>	<b>MADHYA MAHARASHTRA</b>	
	<b>MAHA</b>	<b>MAHARASHTRA</b>	
	<b>MANI</b>	<b>MANIPUR</b>	
	<b>MEGHA</b>	<b>MEGHALAYA</b>	
	<b>MIZO</b>	<b>MIZORAM</b>	
	<b>MP</b>	<b>MADHYA PRADESH</b>	
		<b>MRTHWD</b>	<b>MARATHWADA</b>
		<b>NAGA</b>	<b>NAGALAND</b>
<b>N COTL AP</b>		<b>NORTH COASTAL ANDHRA PRADESH</b>	
<b>NIK</b>		<b>NORTH INTERIOR KARNATAKA</b>	
<b>ORS</b>		<b>ORISSA</b>	
<b>PJB</b>		<b>PUNJAB</b>	
<b>RAJ</b>		<b>RAJASTHAN</b>	
<b>RYLSM</b>		<b>RAYALASEEMA</b>	
<b>SAU &amp; KUTCH</b>		<b>SAURASHTRA &amp; KUTCH</b>	
<b>SHWB</b>		<b>SUB-HIMALAYAN WEST BENGAL</b>	
<b>SIK</b>		<b>SOUTH INTERIOR KARNATAKA</b>	
<b>SKM</b>		<b>SIKKIM</b>	
<b>TLNGN</b>		<b>TELANGANA</b>	
<b>TN</b>		<b>TAMIL NADU</b>	
<b>TRP</b>		<b>TRIPURA</b>	
<b>UP</b>		<b>UTTAR PRADESH</b>	
<b>UTRKN</b>		<b>UTTARAKHAND</b>	
<b>VID</b>		<b>VIDHARBHA</b>	
<b>SHWB</b>		<b>SUB HIMALAYAN WEST BENGAL</b>	
<b>GWB</b>		<b>GANGETIC WEST BENGAL</b>	
<b>ARSEA</b>		<b>ARABIAN SEA</b>	
	<b>ILS</b>	<b>ISLANDS</b>	
<b>MISCELLANEOUS</b>	<b>ASSW</b>	<b>IN ASSOCIATION WITH</b>	

<b>ASSTD</b>	<b>ASSOCIATED</b>
<b>LLC</b>	<b>LOW LEVEL CIRCULATION</b>
<b>EMBDD</b>	<b>EMBEDDED</b>
<b>N/HOOD</b>	<b>NEIGHBOURHOOD</b>
<b>EXT</b>	<b>EXTREME</b>