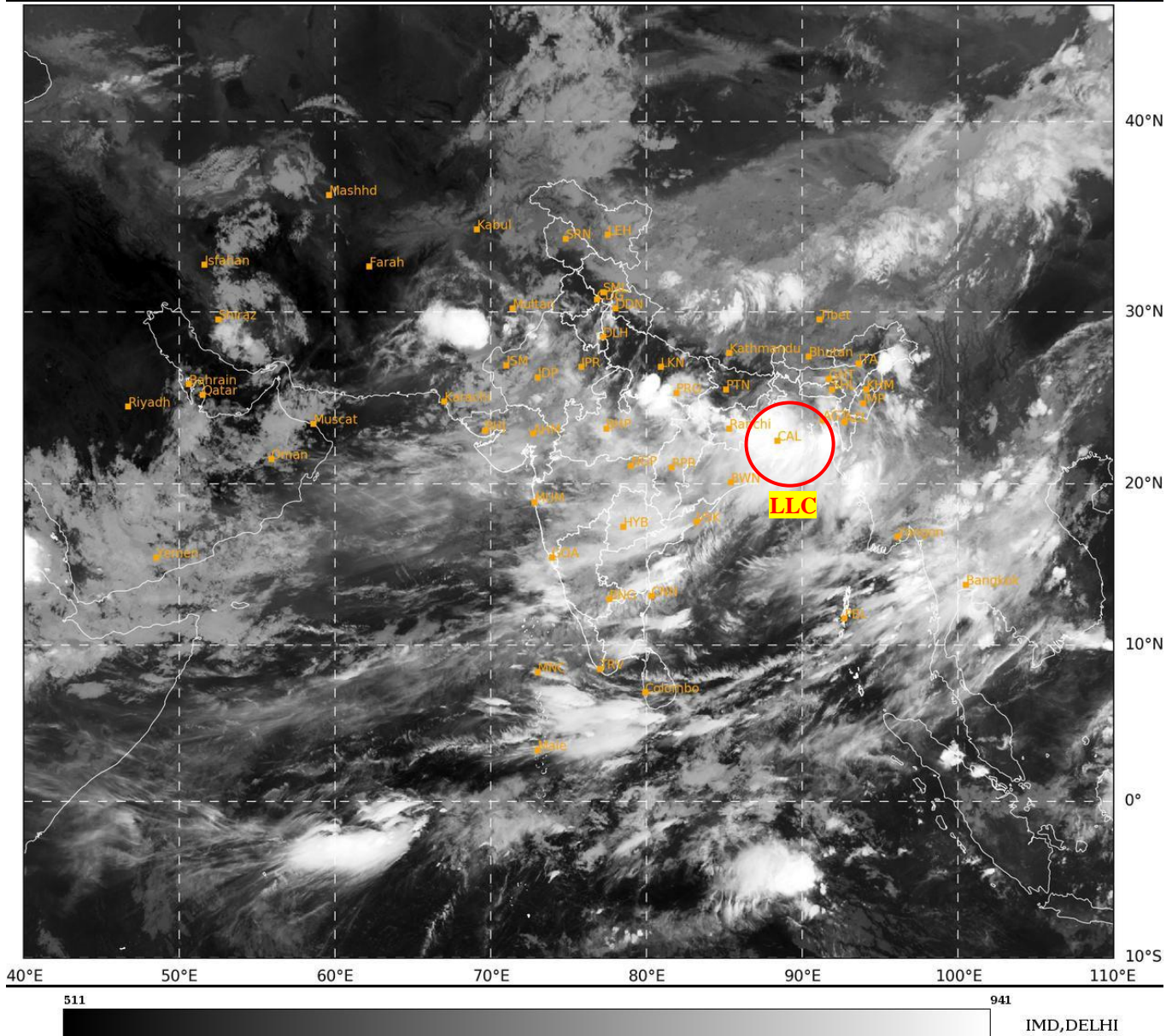




**SATELLITE BULLETIN BASED ON SATELLITE
IMAGERIES AND PRODUCTS**
01.08.2024 TIME 2100 UTC

SAT : INSAT-3DR IMG
IMG_TIR1 10.8 um
LIC Mercator

01-08-2024/(2115 to 2142) GMT
02-08-2024/(0245 to 0312) IST



TCIN50 DEMS 012100

SATELLITE BULLETIN BASED ON INSAT-3DR PIC OF 012115 UTC (.)

REGION COVERED BETWEEN LAT 50.0°N TO 35.0°S AND LONG 40.0°E TO 125.0°E (.)

SALIENT FEATURES:-

LLC OVER NORTH BAY ADJ GANGETIC WEST BENGAL AND BANGLADESH:-

LOW LEVEL CIRCULATION (LLC) OVER NORTH BAY ADJ GWB & BD (.) ASSTD SCT TO BKN
LOW/ MED CLOUDS WITH EMBDD INT TO V INT CONVTN OVER NORTH BAY GWB & BD (.)
(MINIMUM CTT MINUS 93 DEG CEL) (.)

CONVECTIVE / THUNDERSTORM ACTIVITY:-

INTENSE TO VERY INTENSE CONVECTIVE / THUNDERSTORM ACTIVITY OBSERVED S UP SW
BHR JHRKND CHTGH ORS GWB NE ASSAM ADJ ARUPR N NAGA TRP NE MP GOA (MINIMUM
CTT MINUS 70-93 DEG CEL) (.)

MODERATE TO INTENSE CONVECTIVE / THUNDERSTORM ACTIVITY OBSERVED OVER
UTRKND DLH ADJ HARY N UP REST NE STATES RAJ REST MP GUJ MAHA KRNTK TLNGN
RYLSM COTL AP KER TN LKSDP ILS ANDAMAN & NICOBAR ILS (MINIMUM CTT MINUS 40-70
DEG CEL) (.)



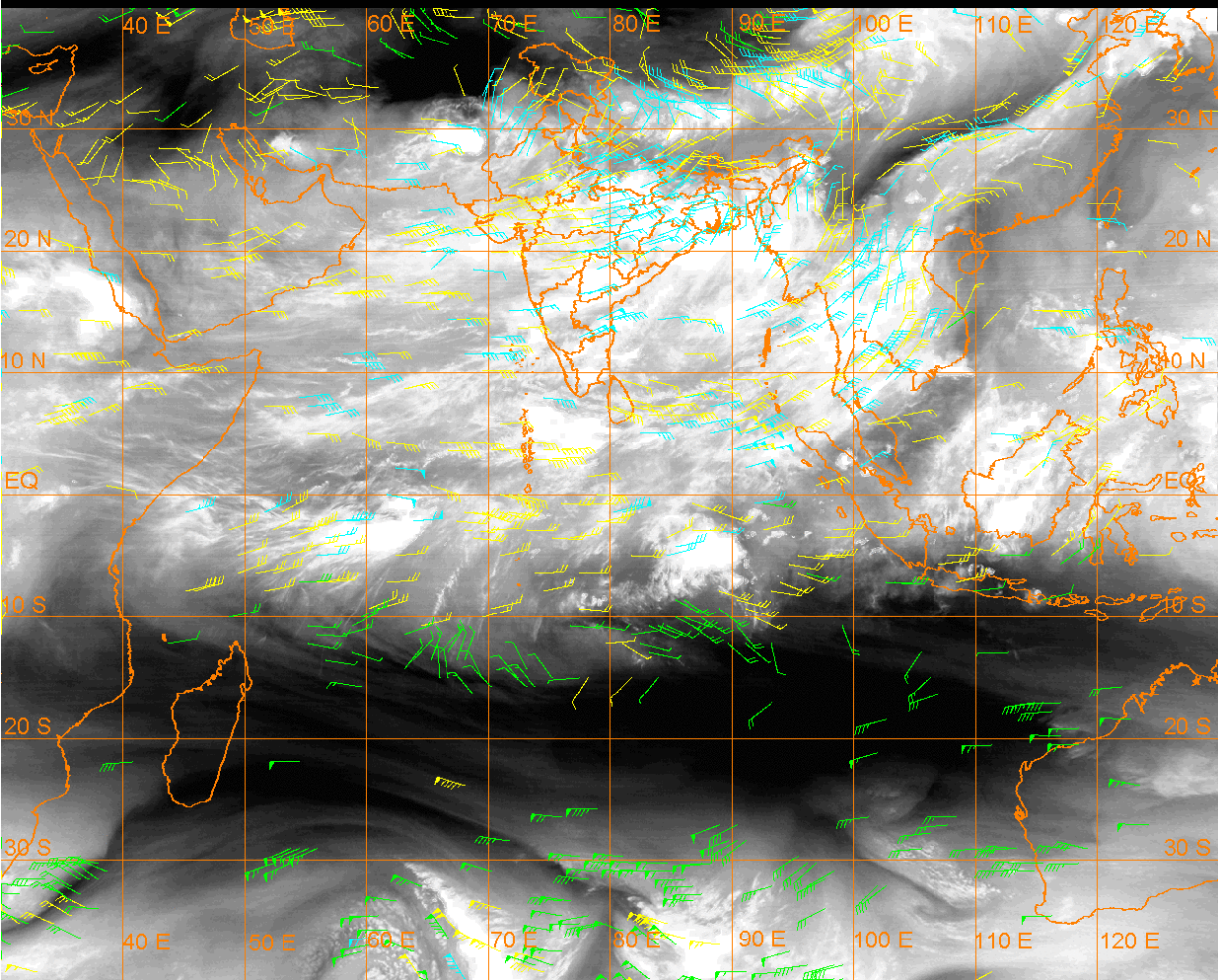
INSAT-3DR 01-AUG-2024 21:15 WV IMG

WATER VAPOUR WIND

(1Kt = 0.5 m/s)

10 Kt // 15 Kt // 20 Kt // 50 Kt

100-250 hPa
251-350 hPa
351-500 hPa



CLOUDS DESCRIPTION WITHIN INDIA:-

NORTH:-

SCT TO BKN LOW/MED CLOUDS WITH EMBDD INT TO V INT CONVTN OVER S UP (.) SCT LOW/MED CLOUDS WITH EMBDD MOD TO INT CONVTN OVER UTRKND DLH ADJ HARY N UP AND WK TO MOD CONVTN OVER LADAKH J&K HP PJB REST HARY (.)

EAST:-

SCT TO BKN LOW/MED CLOUDS WITH EMBDD INT TO V INT CONVTN OVER SW BHR JHRKND CHTGH ORS GWB NE ASSAM ADJ ARUPR N NAGA TRP & BD (.) SCT LOW/MED CLOUDS WITH EMBDD MOD TO INT CONVTN OVER REST NE STATES AND WK TO MOD CONVTN OVER REST BHR SHWB SKM (.)

WEST:-

SCT TO BKN LOW/MED CLOUDS WITH EMBDD INT TO V INT CONVTN OVER NE MP GOA (.) SCT TO BKN LOW/MED CLOUDS WITH EMBDD MOD TO INT CONVTN OVER RAJ REST MP GUJ MAHA (.)

SOUTH:-

SCT TO BKN LOW/MED CLOUDS WITH EMBDD MOD TO INT CONVTN OVER KRNTK TLNGN RYLSM COTL AP KER TN LKSDP ILS ANDAMAN & NICOBAR ILS (.)

ARABIAN SEA:-

SCT LOW/MED CLOUDS WITH EMBDD INT TO V INT CONVTN OVER COMORIN & MALDIVES AREA (.) SCT LOW/MED CLOUDS WITH EMBDD MOD TO INT CONVTN OVER EAST ARSEA GULF OF KUTCH GULF OF CAMBAY & LKSDP ILS AREA (.) SCT LOW/MED CLOUDS WITH EMBDD WK TO MOD CONVTN OVER WEST ARSEA (.)

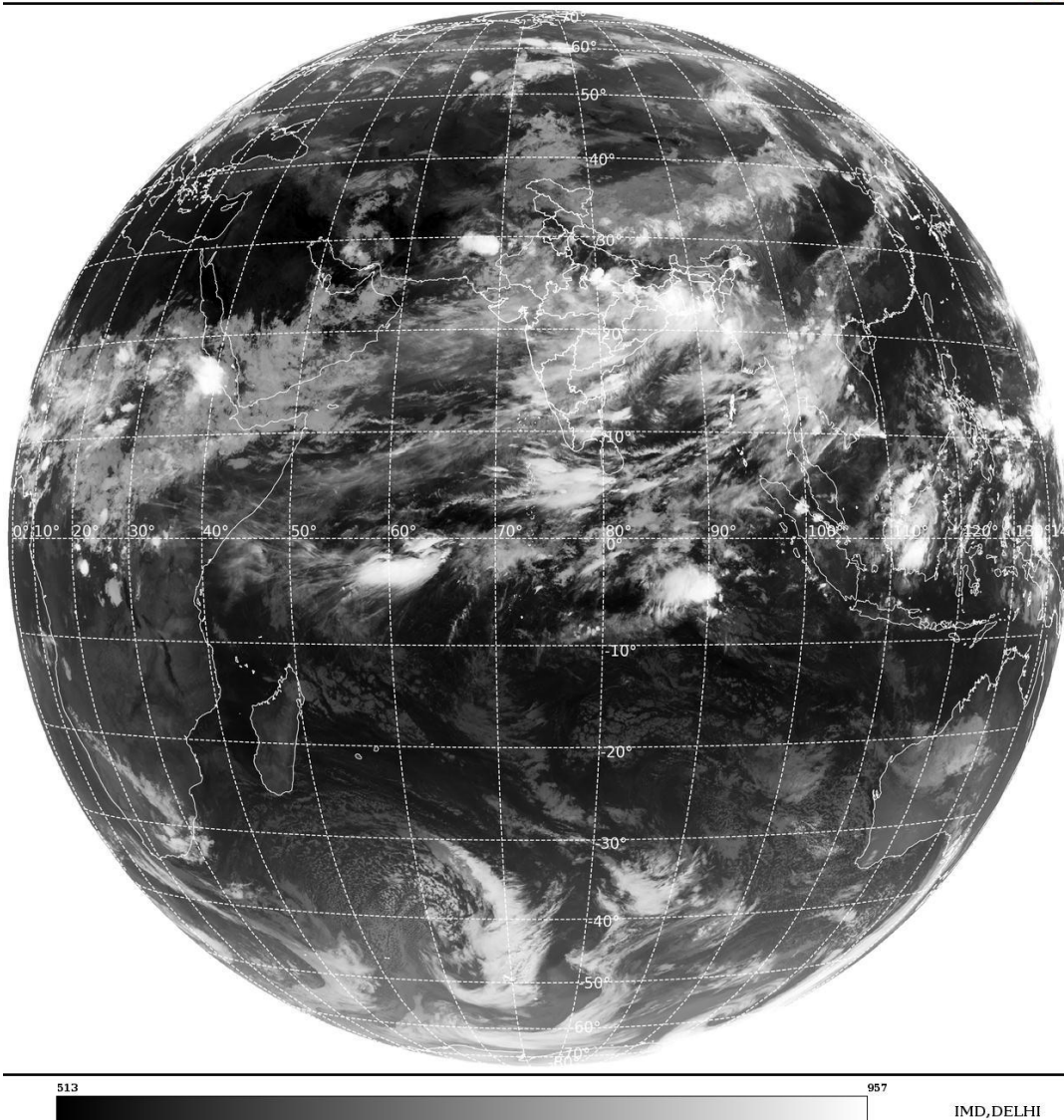
BAY OF BENGAL & ANDAMAN SEA:-

SCT LOW/MED CLOUDS WITH EMBDD INT TO V INT CONVTN OVER NORTH BAY WC & SW BAY OFF S AP – N TN COASTS N ANDAMAN SEA ARAKAN COAST GULF OF MARTABAN & TENASSERIM COAST (.) SCT LOW/MED CLOUDS WITH EMBDD MOD TO INT CONVTN OVER REST BAY & S ANDAMAN SEA (.)

CLOUDS DESCRIPTION OUTSIDE INDIA:-

SAT : INSAT-3DR IMG
 Thermal Infrared1 Count 10.8 um
 L1B FULL DISK

01-08-2024/(2115 to 2142) GMT
 02-08-2024/(0245 to 0312) IST



SCT LOW/MED CLOUDS WITH EMBDD MOD TO INT CONVTN OVER SRI LANKA PALK STR GULF OF MANNAR MALDIVES PAK NEPAL BHUTAN TIBET CHINA YELLOW SEA MYANMAR THAILAND GULF OF THAILAND CAMBODIA LAOS VIETNAM GULF OF TONKIN SUMATRA STR OF MALACCA MALAYSIA BORNEO SOUTH CHINA SEA JAVA ILS & SEA CELEBES ILS & SEA PHILIPPINES SULU SEA AND OVER INDIAN OCEAN BET LAT 5.0N TO 10.0S LONG 45.0E TO 102.0E (.)

TOO 02/0430 HRS IST=

NNNN

LEGEND:-

| | | |
|---------------------------|--------------|--|
| REGION | NORTH | J&K HP PJB HARY DLH UP UTRKND |
| | EAST | BHR JHRKND CHTGH OR WB SKM NORTH- EAST STATES |
| | WEST | RAJ MP GUJ MAHA GOA |
| | SOUTH | TLNGN AP KRNTK KER TN LKSDP ANDAMAN & NICOBAR ILS |
| CLOUD DISTRIBUTION | ISOL | ISOLATED (LESS THAN 25%) |
| | SCT | SCATTERED (25 TO 50%) |
| | BKN | BROKEN (51 TO 75%) |
| | SLD | SOLID (GREATER THAN 75%) |

| CLOUDS TOP TEMPERATURE | CTT | CLOUD TOP TEMPERATURE |
|--|----------------------------------|---|
| CONVECTION | WK CONV TN | WEAK CONVECTION (CTT GREATER THAN -25°C) |
| | MOD CONV TN | MODERATE CONVECTION (CTT BETWEEN -25°C TO -40°C) |
| | INT CONV TN | INTENSE CONVECTION (CTT BETWEEN -41°C TO -70°C) |
| | V INT CONV TN | VERY INTENSE CONVECTION (CTT LESS THAN -70°C) |
| METEOROLOGICAL SUB- DIVISIONS, STATES & UNION TERRITORIES | ARUPR | ARUNACHAL PRADESH |
| | BHR | BIHAR |
| | CHTGH | CHHATTISGARH |
| | COTL AP | COASTAL ANDHRA PRADESH |
| | COTL KRNTK | COASTAL KARNATAKA |
| | COTL ORS | COASTAL ORISSA |
| | GUJ | GUJARAT |
| | GWB | GANGETIC WEST BENGAL |
| | HARY | HARYANA |
| | DLH | DELHI |
| | HP | HIMACHAL PRADESH |
| | J&K | JAMMU AND KASHMIR |
| | JHRKND | JHARKHAND |
| | KER | KERALA |
| | KKN | KONKAN |
| | LKSDP | LAKSHADWEEP |
| | M MAHA | MADHYA MAHARASHTRA |
| | MAHA | MAHARASHTRA |
| | MANI | MANIPUR |
| | MEGHA | MEGHALAYA |
| | MIZO | MIZORAM |
| | MP | MADHYA PRADESH |
| | MRTHWD | MARATHWADA |
| | NAGA | NAGALAND |
| | N COTL AP | NORTH COASTAL ANDHRA PRADESH |
| | NIK | NORTH INTERIOR KARNATAKA |
| | ORS | ORISSA |
| | PJB | PUNJAB |
| | RAJ | RAJASTHAN |
| RYLSM | RAYALASEEMA | |
| SAU & KUTCH | SAURASHTRA & KUTCH | |
| SHWB | SUB-HIMALAYAN WEST BENGAL | |
| SIK | SOUTH INTERIOR KARNATAKA | |
| SKM | SIKKIM | |
| TLNGN | TELANGANA | |
| TN | TAMIL NADU | |
| TRP | TRIPURA | |
| UP | UTTAR PRADESH | |

| | | |
|----------------------|---------------|----------------------------------|
| | UTRKND | UTTARAKHAND |
| | VID | VIDHARBHA |
| | SHWB | SUB HIMALAYAN WEST BENGAL |
| | GWB | GANGETIC WEST BENGAL |
| | ARSEA | ARABIAN SEA |
| | ILS | ISLANDS |
| MISCELLANEOUS | ASSW | IN ASSOCIATION WITH |
| | ASSTD | ASSOCIATED |
| | LLC | LOW LEVEL CIRCULATION |
| | EMBDD | EMBEDDED |
| | N/HOOD | NEIGHBOURHOOD |
| | EXT | EXTREME |