



भारत मौसम विज्ञान विभाग
पृथ्वी विज्ञान मंत्रालय
India Meteorological Department
Ministry of Earth Sciences

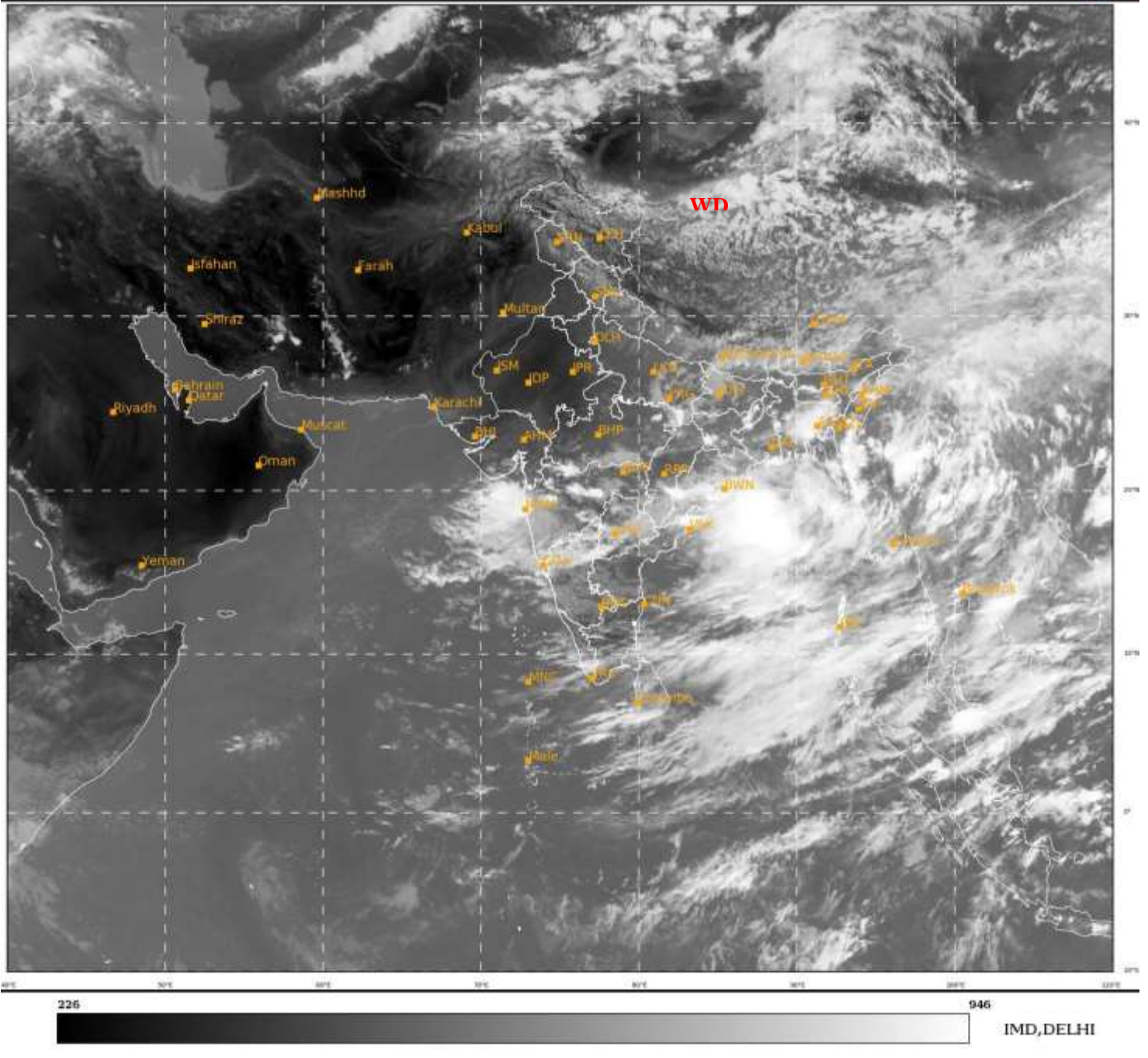


**SATELLITE BULLETIN BASED ON SATELLITE IMAGERIES
AND PRODUCTS**

09.06.2021 TIME 0900 UTC

SAT : INSAT-3D IMG
IMG_TIR1 10.8 um
LIC Mercator

09-06-2021/(0900 to 0926) GMT
09-06-2021/(1430 to 1456) IST



TCIN50 DEMS 090900

SATELLITE BULLETIN BASED ON INSAT-3D PIC OF 090900 UTC (.)

REGION COVERED BETWEEN LAT 50.0°N TO 30.0°S AND LONG 40.0°E TO 125.0°E (.)

SALIENT FEATURES:-

WESTERN DISTURBANCE (WD):-

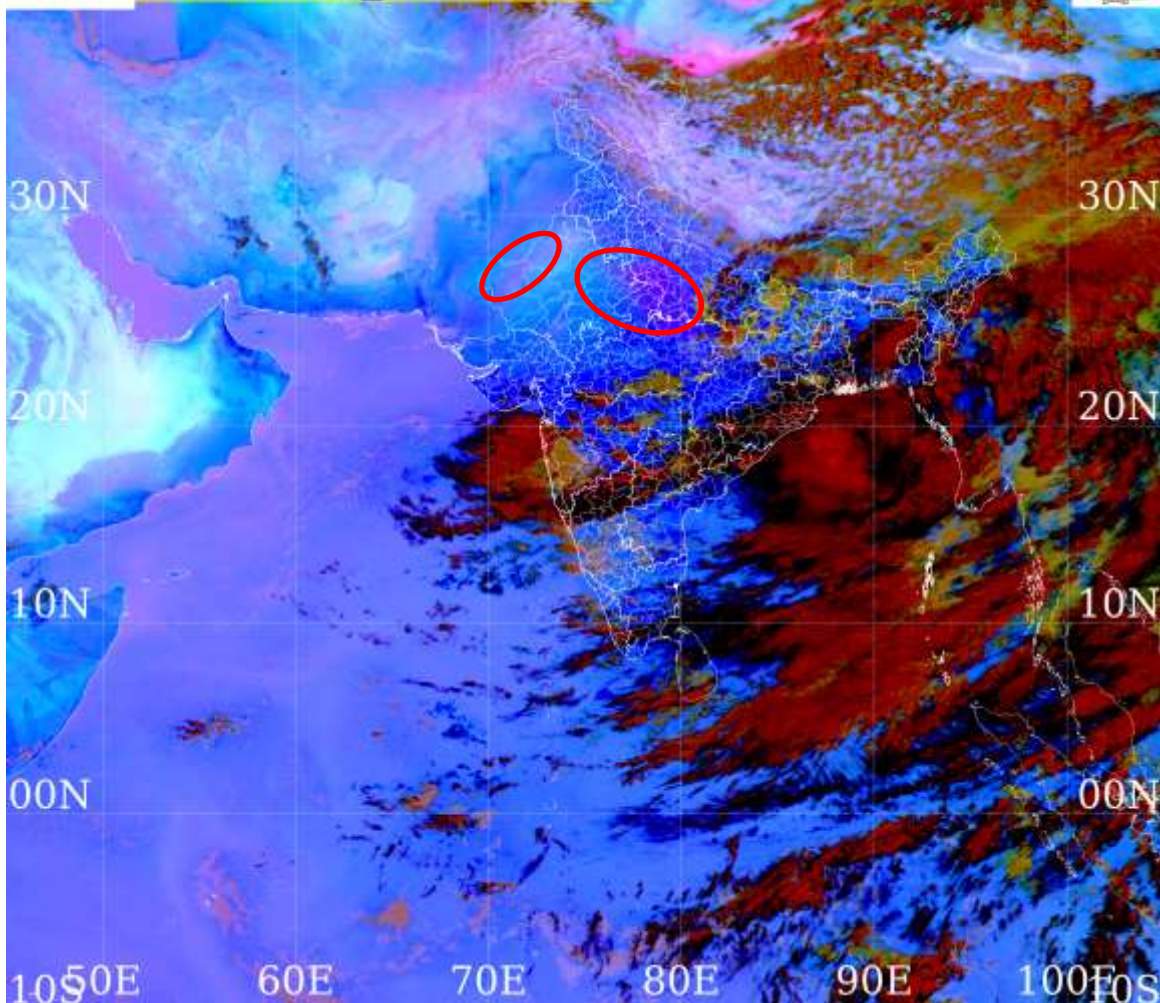
SCT MULTILAYERED CLOUDS OVER E TIBET ADJ CHINA IN ASSW **WD** OVER THE AREA (.)

DUST:

METEOSAT-8 RGB DUST PRODUCT AT 0900 UTC INDICATES DUST OVER W & EXT NE RAJ SW UP NC MP (.)



60E 70E 80E 90E 100E
MSG-1: SEVIRI [dust]
20210609_0900UTC



INSAT-3D 09-JUN-2021 09:00 WV IMG

WATER VAPOUR WIND

(1Kt = 0.5 m/s)

10 Kt

15 Kt

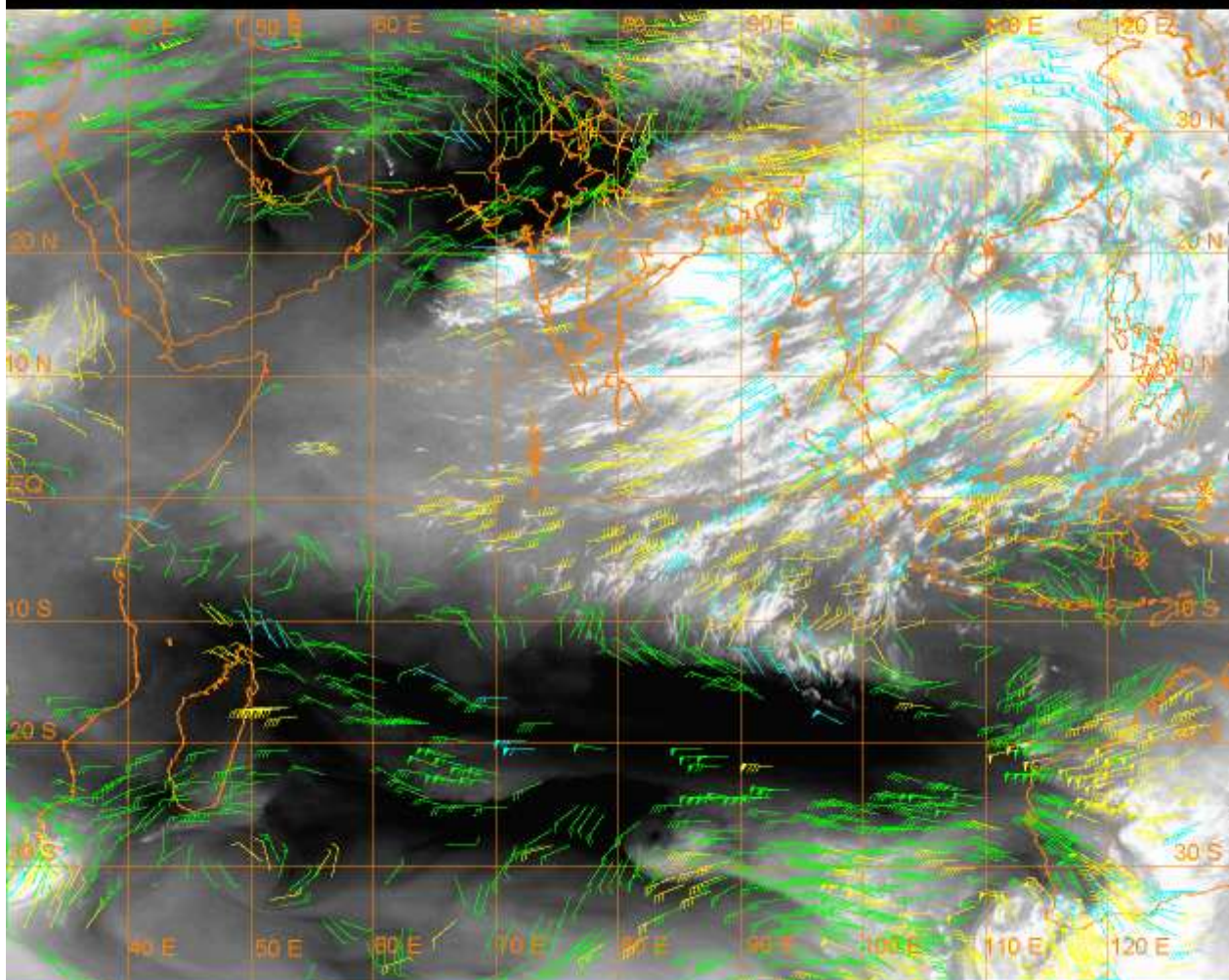
20 Kt

50 Kt

100-250 hPa

251-350 hPa

351-500 hPa



CLOUDS DESCRIPTION WITHIN INDIA:-

NORTH:-

**BKN LOW/MED CLOUDS WITH EMBDD ISOL WK TO MOD CONVTN OVER NE LADAKH E UP (.)
SCT LOW/MED CLOUDS OVER REST LADAKH J&K HP UTRKND REST UP (.)**

EAST:

**SCT LOW/MED CLOUDS WITH EMBDD INT TO V INT CONVTN OVER EXT SW & NE JHRKND C
ORS ADJ CHTGH EXT WC GWB E MIZO & E BD (.) SCT LOW/MED CLOUDS WITH EMBDD MOD
TO INT CONVTN OVER NW CHTGH N ORS EXT SW ASSAM E MEGHA & C BD (.) SCT LOW/MED
CLOUDS WITH EMBDD ISOL WK TO MOD CONVTN OVER BHR REST JHRKND REST CHTGH
REST ORS REST GWB SHWB SKM REST NE STATES (.)**

WEST:-

**SCT LOW/MED CLOUDS WITH EMBDD INT TO V INT CONVTN OVER NE & EXT SW MP ADJ
NORTH MADHYA MAHA SW VID N KKN OFF N KKN COAST NE MRTHWD (.) SCT LOW/MED
CLOUDS WITH EMBDD MOD TO INT CONVTN OVER SOUTH MADHYA MAHA OFF REST KKN
COAST E & S MRTHWD (.) SCT LOW/MED CLOUDS WITH EMBDD WK TO MOD CONVTN OVER
S MP S GUJ REST VID MRTHWD REST MAHA (.)SCT LOW/MED CLOUDS OVER E RAJ C GUJ
REST MP (.)**

SOUTH:-

**SCT LOW/MED CLOUDS WITH EMBDD MOD TO INT CONVTN OVER NIK N& SW TLNGN N
COTL AP S KER ANDAMAN & NICOBAR ILS (.) SCT LOW/MED CLOUDS WITH EMBDD ISOL WK
CONVTN OVER SE TLNGN REST KRNTK S KER TN & LKSDP (.) SCT LOW/MED CLOUDS OVER
S COTL AP REST RYLSM REST KER REST TN (.)**

ARABIAN SEA:-

**SCT LOW/MED CLOUDS WITH EMBDD INT TO V INT CONVTN OVER NE ADJ EC ARSEA (.)
SCT LOW/MED CLOUDS WITH EMBDD MOD TO INT CONVTN OVER EC ARSEA OFF KRNTK
COAST & COMORIN AREA (.)**

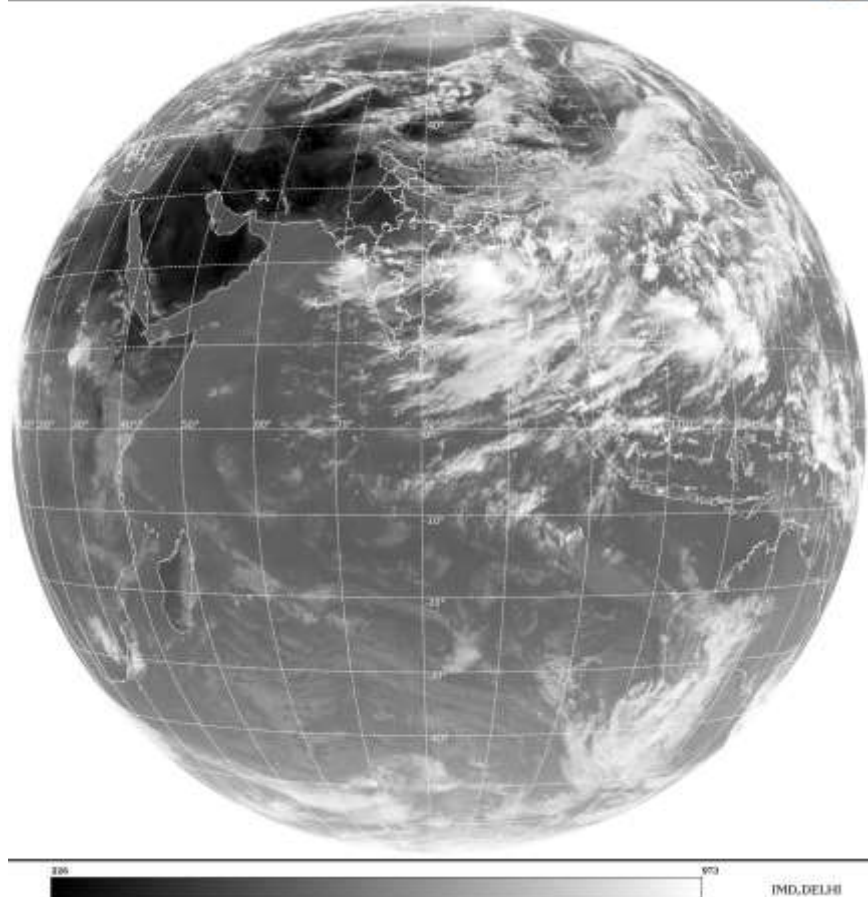
BAY OF BENGAL & ANDAMAN SEA:-

**SCT LOW/MED CLOUDS WITH EMBDD INT TO V INT CONVTN OVER N & C BAY SOUTH
ANDAMAN SEA AND MOD TO INT CONVTN OVER SW BAY (.)**

CLOUDS DESCRIPTION OUTSIDE INDIA:-

SAT : INSAT-3D IMG
Thermal Infrared1 Count 10.8 um
LIB FULL DISS.

06-06-2021(0900 to 0926) GMT
06-06-2021(1430 to 1456) IST



SCT LOW/MED CLOUDS WITH EMBDD MOD TO INT CONVTN OVER SRI LANKA NEPAL BHUTAN E TIBET CHINA YELLOW SEA TAIWAN E CHINA SEA HAIN GULF OF TONKIN MYANMAR THAILAND GULF OF THAILAND CAMBODIA LAOS VIETNAM SUMATRA STR OF MALACCA MALAY PENINSULA BORNEO S CHINA SEA CELEBES SEA PHILIPPINES AND OVER INDIAN OCEAN BET LAT 5.0N TO 13.5S LONG 66.0E TO 103.0E (.)

TOO 09/1555EF=

NNNN

LEGEND:-

REGION	NORTH	J&K HP PJB HARY DLH UP UTRKND
	EAST	BHR JHRKND CHTGH ORS WB SKMNORTH-EAST STATES
	WEST	RAJ MP GUJ MAHA GOA
	SOUTH	TLNGN AP KRNTK KER TN LKSDP ANDAMAN & NICOBAR ILS

CLOUD DISTRIBUTION	ISOL	ISOLATED (LESS THAN 25%)
	SCT	SCATTERED (25 TO 50%)
	BKN	BROKEN (51 TO 75%)
	SLD	SOLID (GREATER THAN 75%)
CLOUDS TOP TEMPERATURE	CTT	CLOUD TOP TEMPERATURE
CONVECTION	WK CONVTN	WEAK CONVECTION (CTT GREATER THAN -25°C)
	MOD CONVTN	MODERATE CONVECTION (CTT BETWEEN -25°C TO -40°C)
	INT CONVTN	INTENSE CONVECTION (CTT BETWEEN -41°C TO -70°C)
	V INT CONVTN	VERY INTENSE CONVECTION (CTT LESS THAN -70°C)
METEOROLOGICAL SUB-DIVISIONS, STATES & UNION TERRITORIES	ARUPR	ARUNACHAL PRADESH
	BHR	BIHAR
	CHTGH	CHHATTISGARH
	COTL AP	COASTAL ANDHRA PRADESH
	COTL KRNTK	COASTAL KARNATAKA
	COTL ORS	COASTAL ORISSA
	GUJ	GUJARAT
	GWB	GANGETIC WEST BENGAL
	HARY	HARYANA
	DLH	DELHI
	HP	HIMACHAL PRADESH
	J&K	JAMMU AND KASHMIR

	JHRKND	JHARKHAND
	KER	KERALA
	KKN	KONKAN
	LKSDP	LAKSHADWEEP
	M MAHA	MADHYA MAHARASHTRA
	MAHA	MAHARASHTRA
	MANI	MANIPUR
	MEGHA	MEGHALAYA
	MIZO	MIZORAM
	MP	MADHYA PRADESH
	MRTHWD	MARATHWADA
	NAGA	NAGALAND
	N COTL AP	NORTH COASTAL ANDHRA PRADESH
	NIK	NORTH INTERIOR KARNATAKA
	ORS	ORISSA
	PJB	PUNJAB
	RAJ	RAJASTHAN
	RYLSM	RAYALASEEMA
	SAU & KUTCH	SAURASHTRA & KUTCH
	SHWB	SUB-HIMALAYAN WEST BENGAL
	SIK	SOUTH INTERIOR KARNATAKA
	SKM	SIKKIM
	TLNGN	TELANGANA
	TN	TAMIL NADU
	TRP	TRIPURA
	UP	UTTAR PRADESH
	UTRKN	UTTARAKHAND
	VID	VIDHARBHA
	SHWB	SUB HIMALAYAN WEST BENGAL
	GWB	GANGETIC WEST BENGAL
	ARSEA	ARABIAN SEA
	ILS	ISLANDS
MISCELLANEOUS	ASSW	IN ASSOCIATION WITH
	ASSTD	ASSOCIATED
	LLC	LOW LEVEL CIRCULATION
	EMBDD	EMBEDDED
	N/HOOD	NEIGHBOURHOOD
	EXT	EXTREME