



INSAT-3D 22-AUG-2021 17:00 WV IMG

WATER VAPOUR WIND

(1Kt = 0.5 m/s)

10 Kt

15 Kt

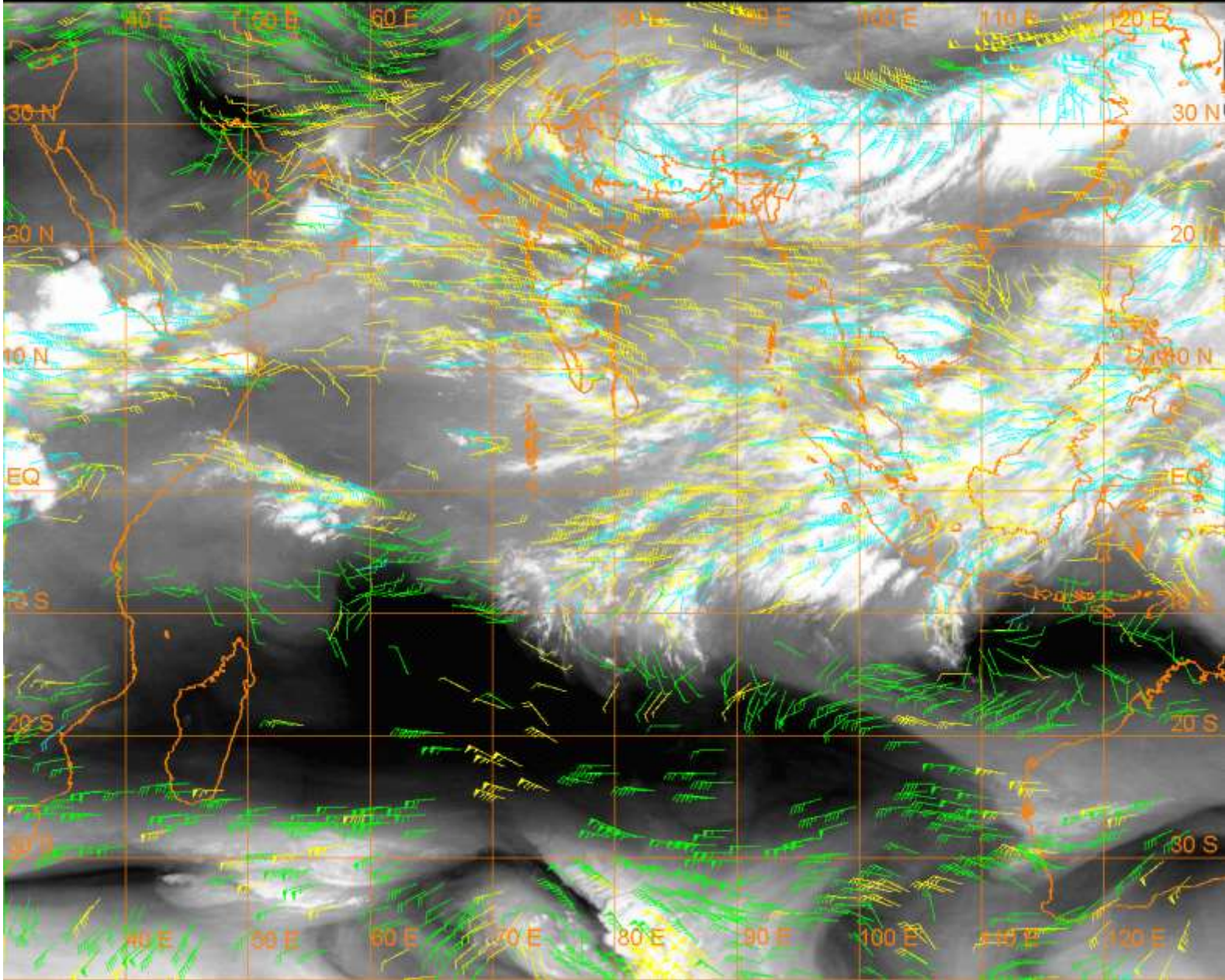
20 Kt

50 Kt

100-250 hPa

251-350 hPa

351-500 hPa



CLOUDS DESCRIPTION WITHIN INDIA:-

NORTH:-

SCT LOW/MED CLOUDS WITH EMBDD MOD TO INT CONVTN OVER E UP (.) SCT LOW/MED CLOUDS WITH EMBDD WK TO MOD CONVTN OVER LADAKH N HP UTRKND W PJB SW HARY EAST PART OF W UP (.) SCT LOW/MED CLOUDS OVER J&K SE HP SE PJB REST HARY REST UP (.)

EAST:-

SCT LOW/MED CLOUDS WITH EMBDD INT TO V INT CONVTN OVER S BHR ADJ NE JHRKND EXT W SHWB EXT S MEGHA EXT E ARUPR & EXT N BD (.) SCT LOW/MED CLOUDS WITH EMBDD MOD TO INT CONVTN OVER N BHR EXT S CHTGH EXT NC & SW ORS EXT SE SHWB EXT C ASSAM E ARUPR S NAGA MANI MIZO N TRP (.) SCT LOW/MED CLOUDS WITH EMBDD ISOL WK TO MOD CONVTN OVER NW JHRKND EXT C ORS N GWB REST SHWB SKM REST ASSAM REST ARUPR REST MEGHA REST NAGA MANI MIZO REST TRP AND SCT LOW/MED CLOUDS OVER REST PARTS OF THE REGION (.)

WEST:-

SCT LOW/MED CLOUDS WITH EMBDD ISOL MOD TO INT CONVTN OVER EXT N RAJ EXT SC MP EXT N & EXT S M MAHA (.) SCT LOW/MED CLOUDS WITH EMBDD WK TO MOD CONVTN OVER W & EXT SE RAJ N MP S KKN & E MRTHWD GOA (.) SCT LOW/MED CLOUDS OVER REST RAJ REST MP W & REST S GUJ REST MAHA (.)

SOUTH:-

SCT LOW/MED CLOUDS WITH EMBDD INT TO V INT CONVTN OVER SW NIK NE SIK C TLNGN EXT N AP WC TN C KER AND MOD TO INT CONVTN OVER COTL KRNTK SE SIK EXT NW & EXT SW RYLSM EXT N TN C KER (.) SCT LOW/MED CLOUDS OVER REST KRNTK REST W RYLSMA REST KER REST TN LKSDP S ANDAMAN & NICOBAR ILS (.)

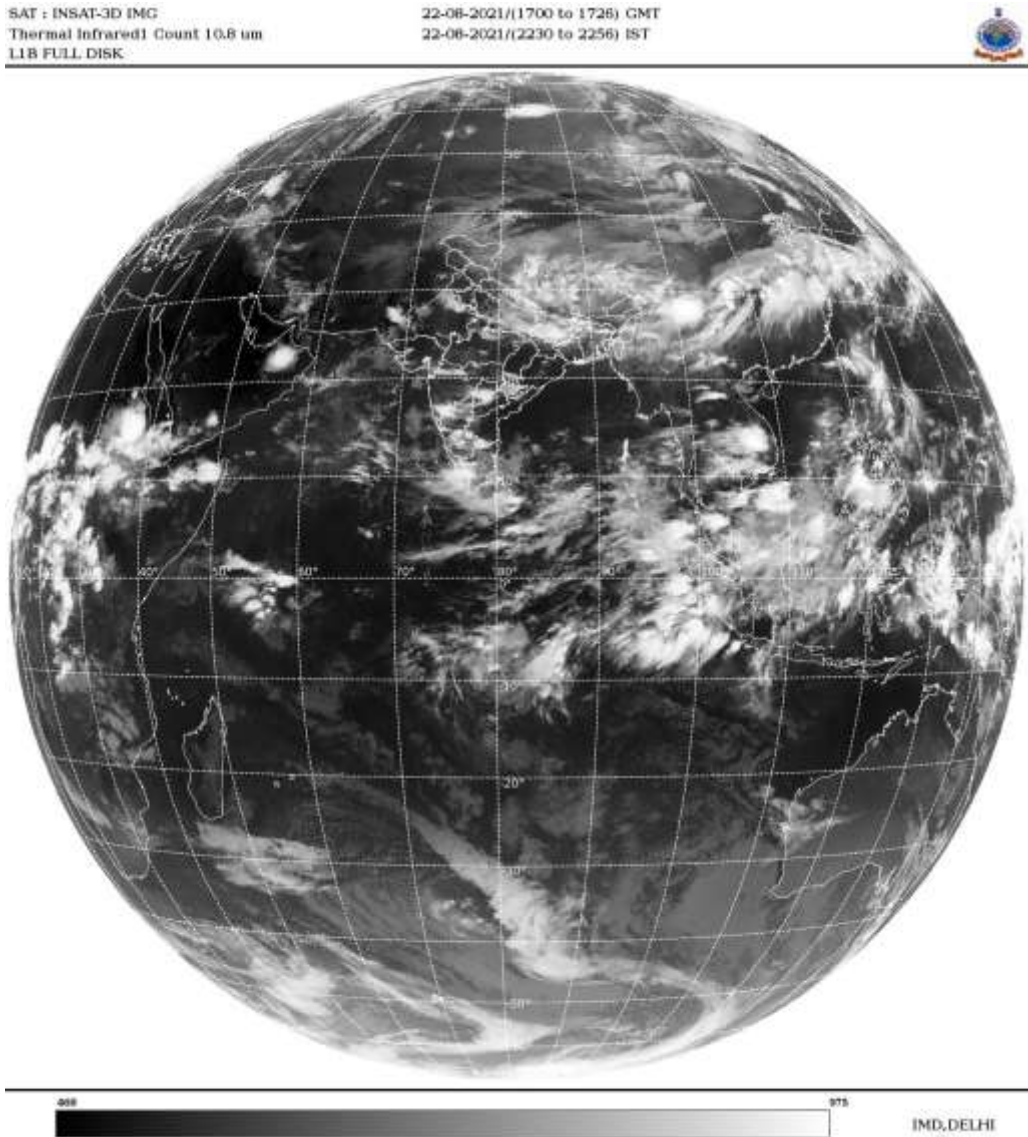
ARABIAN SEA:-

SCT LOW/MED CLOUDS WITH EMBDD ISOL MOD TO INT CONVTN OVER EC ADJ S ARSEA (.)
SCT LOW/MED CLOUDS WITH EMBDD ISOL WK TO MOD CONVTN OVER REST ARSEA (.)

BAY OF BENGAL & ANDAMAN SEA:-

SCT LOW/MED CLOUDS WITH EMBDD INT TO V INT CONVTN OVER S BAY AND ANDAMAN SEA
(.) SCT LOW/MED CLOUDS WITH EMBDD MOD TO INT CONVTN OVER REST S BAY &
TENASERIM COT (.)

CLOUDS DESCRIPTION OUTSIDE INDIA:-



SCT LOW/MED CLOUDS WITH EMBDD INT TO V INT CONVTN OVER SRI LANKA GULF OF
MANNAR PALK STR E PAK NEPAL W BHUTAN TIBET CHINA YELLOW SEA E CHINA SEA
TAIWAN MYANMAR THAILAND GULF OF THAILAND CAMBODIA LAOS S VIETNAM SUMATRA
STR OF MALACCA MALAY PENINSULA BORNEO S CHINA SEA JAVA ILS & SEA CELEBES ILS &
SEA PHILIPPINES SULU SEA AND OVER INDIAN OCEAN BET LAT 2.5N TO 4.0S LONG 51.0E TO
60.0E AND LAT 5.0N TO 14.0S LONG 70.5E TO 109.0E (.)

TOO 22/2355EF=

NNNN

LEGEND:-

| | | |
|---------------|--------------|--------------------------------------------------------------|
| REGION | NORTH | J&K HP PJB HARY DLH UP UTRKND |
| | EAST | BHR JHRKND CHTGH ORS WB SKMNORTH-EAST STATES |
| | WEST | RAJ MP GUJ MAHA GOA |
| | SOUTH | TLNGN AP KRNTK KER TN LKSDP ANDAMAN & NICOBAR ILS |

| | | |
|---------------------------------------------------------------------|-----------------------|-------------------------------------------------------------|
| CLOUD DISTRIBUTION | ISOL | ISOLATED (LESS THAN 25%) |
| | SCT | SCATTERED (25 TO 50%) |
| | BKN | BROKEN (51 TO 75%) |
| | SLD | SOLID (GREATER THAN 75%) |
| CLOUDS TOP TEMPERATURE | CTT | CLOUD TOP TEMPERATURE |
| CONVECTION | WK CONVTN | WEAK CONVECTION (CTT GREATER THAN -25°C) |
| | MOD CONVTN | MODERATE CONVECTION (CTT BETWEEN -25°C TO -40°C) |
| | INT CONVTN | INTENSE CONVECTION (CTT BETWEEN -41°C TO -70°C) |
| | V INT CONVTN | VERY INTENSE CONVECTION (CTT LESS THAN -70°C) |
| METEOROLOGICAL SUB-DIVISIONS, STATES & UNION TERRITORIES | ARUPR | ARUNACHAL PRADESH |
| | BHR | BIHAR |
| | CHTGH | CHHATTISGARH |
| | COTL AP | COASTAL ANDHRA PRADESH |
| | COTL KRNTK | COASTAL KARNATAKA |
| | COTL ORS | COASTAL ORISSA |
| | GUJ | GUJARAT |
| | GWB | GANGETIC WEST BENGAL |
| | HARY | HARYANA |
| | DLH | DELHI |
| | HP | HIMACHAL PRADESH |
| | J&K | JAMMU AND KASHMIR |
| | JHRKND | JHARKHAND |
| | KER | KERALA |
| | KKN | KONKAN |
| | LKSDP | LAKSHADWEEP |
| | M MAHA | MADHYA MAHARASHTRA |
| | MAHA | MAHARASHTRA |
| | MANI | MANIPUR |
| | MEGHA | MEGHALAYA |
| MIZO | MIZORAM | |
| MP | MADHYA PRADESH | |

| | | |
|----------------------|------------------------|-------------------------------------|
| | MRTHWD | MARATHWADA |
| | NAGA | NAGALAND |
| | N COTL AP | NORTH COASTAL ANDHRA PRADESH |
| | NIK | NORTH INTERIOR KARNATAKA |
| | ORS | ORISSA |
| | PJB | PUNJAB |
| | RAJ | RAJASTHAN |
| | RYLSM | RAYALASEEMA |
| | SAU & KUTCH | SAURASHTRA & KUTCH |
| | SHWB | SUB-HIMALAYAN WEST BENGAL |
| | SIK | SOUTH INTERIOR KARNATAKA |
| | SKM | SIKKIM |
| | TLNGN | TELANGANA |
| | TN | TAMIL NADU |
| | TRP | TRIPURA |
| | UP | UTTAR PRADESH |
| | UTRKN | UTTARAKHAND |
| | VID | VIDHARBHA |
| | SHWB | SUB HIMALAYAN WEST BENGAL |
| | GWB | GANGETIC WEST BENGAL |
| | ARSEA | ARABIAN SEA |
| | ILS | ISLANDS |
| MISCELLANEOUS | ASSW | IN ASSOCIATION WITH |
| | ASSTD | ASSOCIATED |
| | LLC | LOW LEVEL CIRCULATION |
| | EMBDD | EMBEDDED |
| | N/HOOD | NEIGHBOURHOOD |
| | EXT | EXTREME |