

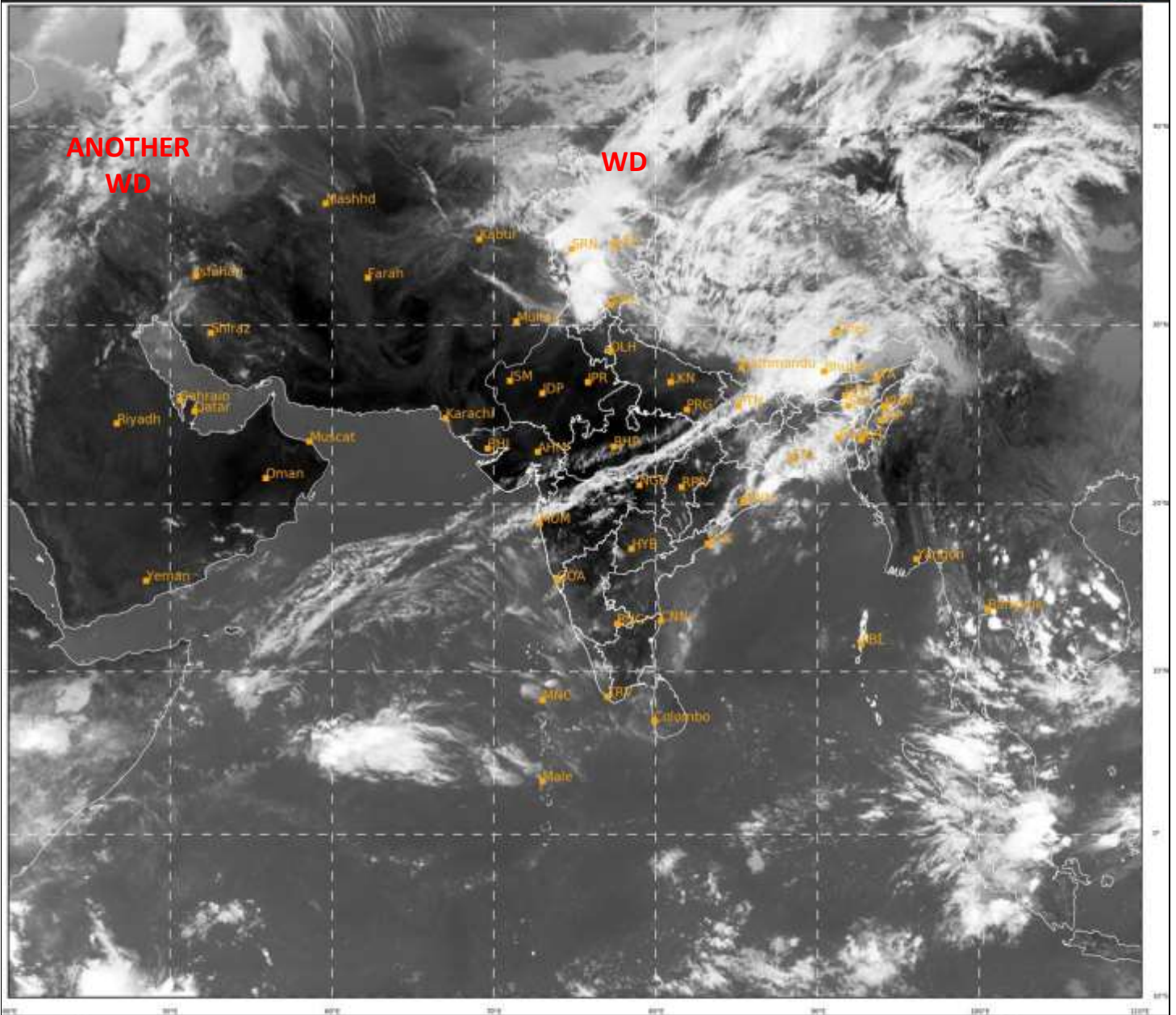


**SATELLITE BULLETIN BASED ON SATELLITE IMAGERIES
AND PRODUCTS**

22.04.2021 TIME 0600 UTC

SAT : INSAT-3D IMG
IMG_TIR1 10.8 um
LIC Mercator

22-04-2021/(0600 to 0626) GMT
22-04-2021/(1130 to 1156) IST



278

928

IMD, DELHI

TCIN50 DEMS 220600

SATELLITE BULLETIN BASED ON INSAT-3D PIC OF 220600 UTC (.)

REGION COVERED BETWEEN LAT 50.0°N TO 30.0°S AND LONG 40.0°E TO 125.0°E (.)

SALIENT FEATURES:-

WESTERN DISTURBANCE (WD):-

SCT TO BKN MULTILAYERED CLOUDS OVER EXT N PAK LADAKH J&K HP UTRKND ADJ NW UP NEPAL TIBET ADJ CHINA IN ASSW **WD** OVER THE AREA (.)

SCT MULTILAYERED CLOUDS OVER CASPIAN SEA AND N/HOOD IN ASSW **ANOTHER WD** OVER THE AREA (.)



INSAT-3D 22-APR-2021 06:00 WV IMG

WATER VAPOUR WIND

(1Kt = 0.5 m/s)

10 Kt

15 Kt

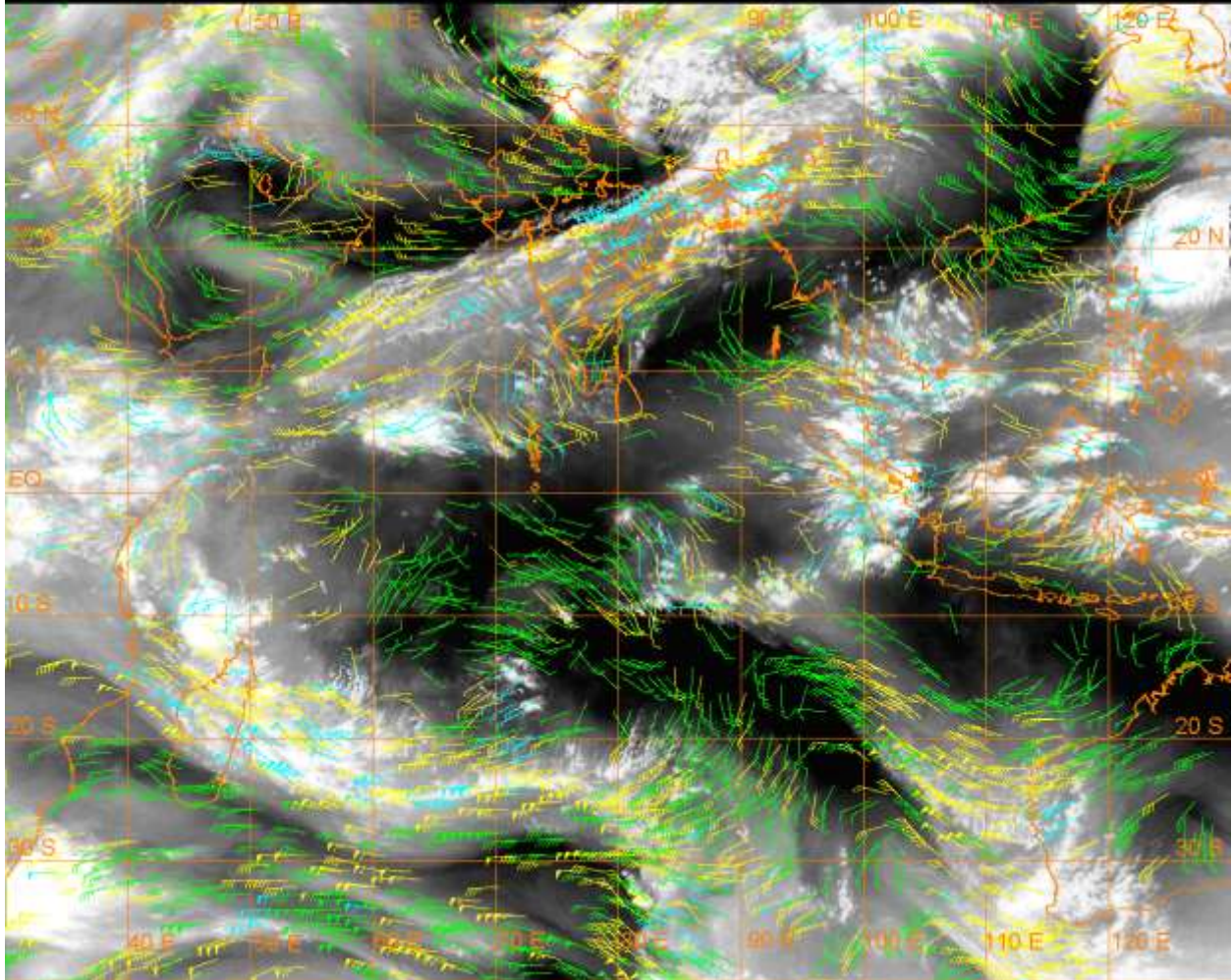
20 Kt

50 Kt

100-250 hPa

251-350 hPa

351-500 hPa



CLOUDS DESCRIPTION WITHIN INDIA:-

NORTH:-

SCT LOW/MED CLOUDS WITH EMBDD MOD TO INT CONVTN OVER LADAKH J&K NW HP NC PUNJAB E UTRKND EXT SE UP AND WK TO MOD CONVTN OVER REST J&K REST LADAKH REST HP REST UTRKND (.) SCT LOW/MED CLOUDS OVER REST PJB REST UP (.)

EAST:-

SCT LOW/MED CLOUDS WITH EMBDD MOD TO INT CONVTN OVER BHR SKM NE ORS GWB C ASSAM E MEGHA (.) SCT LOW/MED CLOUDS WITH EMBDD WK TO MOD CONVTN OVER E ARUPR N NAGA N MANI S ASSAM TRP S MIZO CHTGH E ORS JHRKND REST BHR SHWB REST NE STATES (.)

WEST:-

SCT LOW/MED CLOUDS WITH EMBDD MOD TO INT CONVTN OVER EXT SC MP NORTH M MAHA VID N KKN SE GUJ AND ISOL WK TO MOD CONVTN OVER REST MP S GUJ (.) SCT LOW/MED CLOUDS OVER REST MAHA & GOA (.)

SOUTH:-

SCT LOW/MED CLOUDS WITH EMBDD ISOL WK TO MOD CONVTN OVER TNLGN RYLAM NE COTL AP C KER (.) SCT LOW/MED CLOUDS OVER S KER TN LKSDP ANDAMAN & NICOBAR ILS (.)

ARABIAN SEA:-

SCT LOW/MED CLOUDS WITH EMBDD MOD TO INT CONVTN OVER SOUTH & C ARSEA (.)

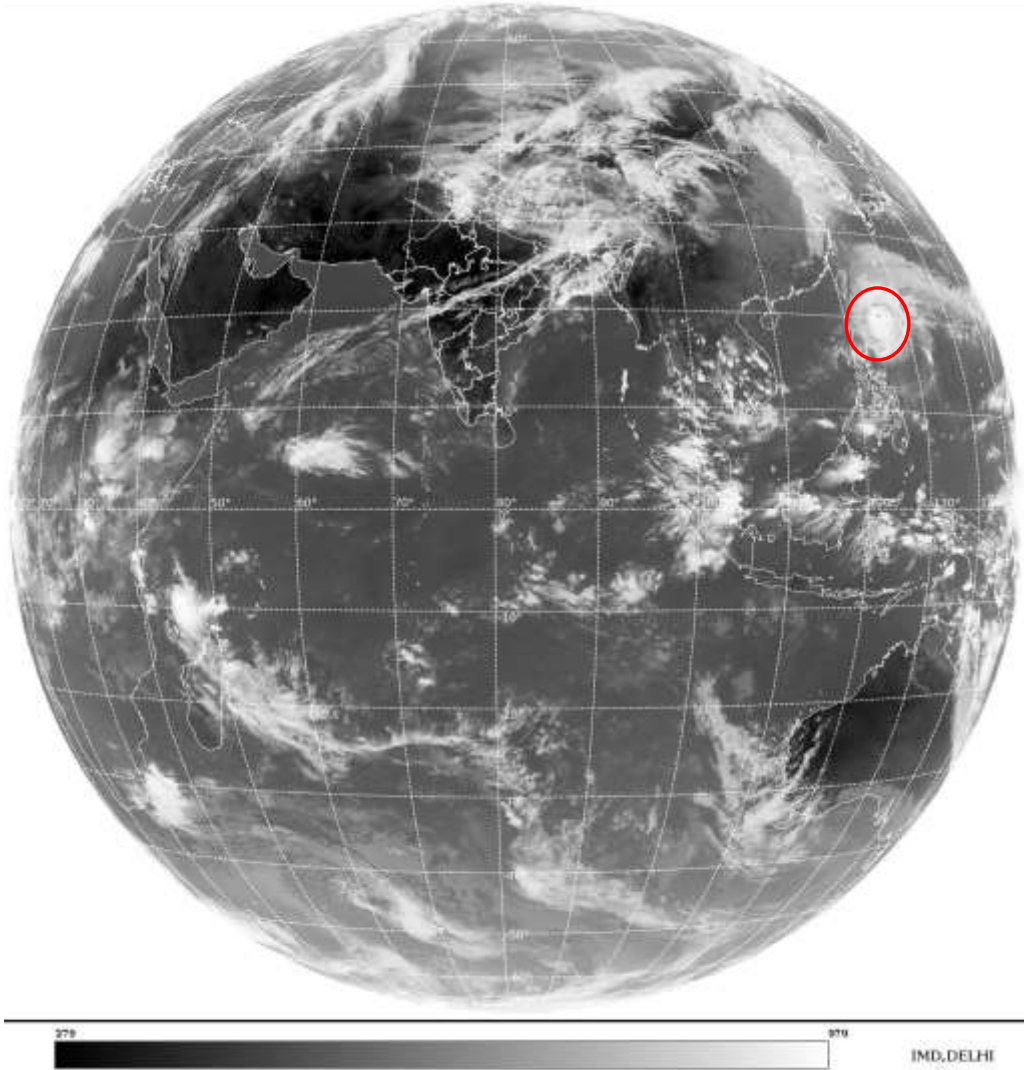
BAY OF BENGAL & ANDAMAN SEA:-

SCT LOW/MED CLOUDS WITH EMBDD WK TO MOD CONVTN OVER NW BAY (.)

CLOUDS DESCRIPTION OUTSIDE INDIA:-

SAT : INSAT-3D IMG
Thermal Infrared1 Count 10.8 um
L1B FULL DISK

22-04-2021/(0600 to 0626) GMT
22-04-2021/(1130 to 1156) IST



VORTEX (SURIGAE) OVER PHILIPPINES SEA:-

VORTEX (**SURIGAE**) OVER PHILIPPINES SEA CENTERED NEAR **20.1N/125.2E** (.) INTENSITY **T4.5/5.5** (.) EYE CLEARLY VISIBLE IN VIS/IR IMAGERY (.) ASSTD BKN LOW/MED CLOUDS WITH EMBDD INT TO V INT CONVECTIVE CIRCULAR CLOUDS MASS OVER AREA BET LAT 16.0N TO 23.0N LONG 122.0E TO 129.0E & N PHILIPPINES (.)

SCT LOW/MED CLOUDS WITH EMBDD MOD TO INT CONVTN OVER MALDIEVES NEPAL BHUTAN TIBET CHINA THAILAND COMBODIA S LAOS S VIETNAM SUMATRA STR OF MALACCA MALAY PENINSULA BORNEO S CHINA SEA CELEBES ILS PHILIPPINES YELLOW SEA MADAGASCAR N MOZAMBIQUE CHANNEL AND OVER INDIAN OCEAN BET EQ TO 30.0S LONG 40.0E TO 110.0E (.)

TOO 22/1215EF=

NNNN

LEGEND:-

REGION	NORTH	J&K HP PJB HARY DLH UP UTRKND
	EAST	BHR JHRKND CHTGH ORS WB SKM NORTH-EAST STATES

	WEST	RAJ MP GUJ MAHA GOA
	SOUTH	TLNGN AP KRNTK KER TN LKSDP ANDAMAN & NICOBAR ILS

CLOUD DISTRIBUTION	ISOL	ISOLATED (LESS THAN 25%)
	SCT	SCATTERED (25 TO 50%)
	BKN	BROKEN (51 TO 75%)
	SLD	SOLID (GREATER THAN 75%)
CLOUDS TOP TEMPERATURE	CTT	CLOUD TOP TEMPERATURE
CONVECTION	WK CONVTN	WEAK CONVECTION (CTT GREATER THAN -25°C)
	MOD CONVTN	MODERATE CONVECTION (CTT BETWEEN -25°C TO -40°C)
	INT CONVTN	INTENSE CONVECTION (CTT BETWEEN -41°C TO -70°C)
	V INT CONVTN	VERY INTENSE CONVECTION (CTT LESS THAN -70°C)
METEOROLOGICAL SUB-DIVISIONS, STATES & UNION TERRITORIES	ARUPR	ARUNACHAL PRADESH
	BHR	BIHAR
	CHTGH	CHHATTISGARH
	COTL AP	COASTAL ANDHRA PRADESH
	COTL KRNTK	COASTAL KARNATAKA
	COTL ORS	COASTAL ORISSA
	GUJ	GUJARAT
	GWB	GANGETIC WEST BENGAL
	HARY	HARYANA
	DLH	DELHI
	HP	HIMACHAL PRADESH
	J&K	JAMMU AND KASHMIR
	JHRKND	JHARKHAND
	KER	KERALA
	KKN	KONKAN
	LKSDP	LAKSHADWEEP
	M MAHA	MADHYA MAHARASHTRA
	MAHA	MAHARASHTRA
	MANI	MANIPUR
	MEGHA	MEGHALAYA
	MIZO	MIZORAM
	MP	MADHYA PRADESH
	MRTHWD	MARATHWADA
	NAGA	NAGALAND
N COTL AP	NORTH COASTAL ANDHRA PRADESH	
NIK	NORTH INTERIOR KARNATAKA	
ORS	ORISSA	

	PJB	PUNJAB
	RAJ	RAJASTHAN
	RYLSM	RAYALASEEMA
	SAU & KUTCH	SAURASHTRA & KUTCH
	SHWB	SUB-HIMALAYAN WEST BENGAL
	SIK	SOUTH INTERIOR KARNATAKA
	SKM	SIKKIM
	TLNGN	TELANGANA
	TN	TAMIL NADU
	TRP	TRIPURA
	UP	UTTAR PRADESH
	UTRKND	UTTARAKHAND
	VID	VIDHARBHA
	SHWB	SUB HIMALAYAN WEST BENGAL
	GWB	GANGETIC WEST BENGAL
	ARSEA	ARABIAN SEA
	ILS	ISLANDS
MISCELLANEOUS	ASSW	IN ASSOCIATION WITH
	ASSTD	ASSOCIATED
	LLC	LOW LEVEL CIRCULATION
	EMBDD	EMBEDDED
	N/HOOD	NEIGHBOURHOOD
	EXT	EXTREME