



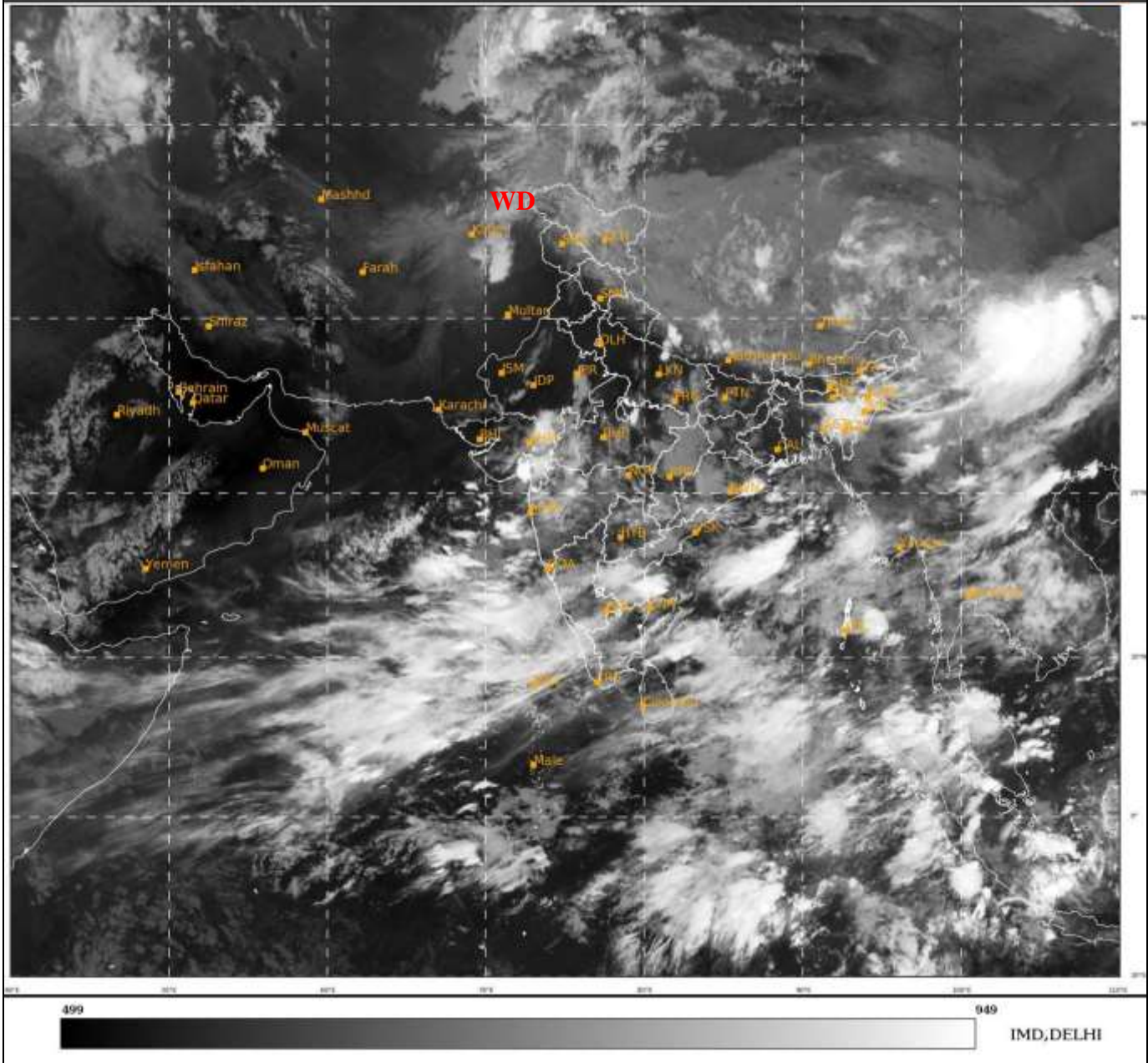
भारत मौसम विज्ञान विभाग  
पृथ्वी विज्ञान मंत्रालय  
India Meteorological Department  
Ministry of Earth Sciences



**SATELLITE BULLETIN BASED ON SATELLITE  
IMAGERIES AND PRODUCTS**  
**22.06.2022 TIME 2100 UTC**

SAT : INSAT-3D IMG  
IMG\_TIR1 10.8 um  
LIC Mercator

22-06-2022/(2100 to 2126) GMT  
23-06-2022/(0230 to 0256) IST



TCIN50 DEMS 222100

SATELLITE BULLETIN BASED ON INSAT-3D PIC OF 222100 UTC (.)

REGION COVERED BETWEEN LAT 50.0°N TO 30.0°S AND LONG 40.0°E TO 125.0°E (.)

**SALIENT FEATURES:-**

**WESTERN DISTURBANCE (WD):-**

SCT MULTILAYERED CLOUDS OVER E AFGAN ADJ N PAK LADAKH J&K HP AND OVER AREA BET LAT 37.0N TO 45.0N LONG 65.0E TO 80.0E IN ASSW **WD** OVER THE AREA (.)

**THUNDERSTORM / CONVECTIVE ACTIVITY:-**

THUNDERSTORM / CONVECTIVE ACTIVITIES OBSERVED OVER N UP MP S RAJ S GUJ MAHA CHTGH ORS NE STATES RYLSM (.)

**DUST:-**

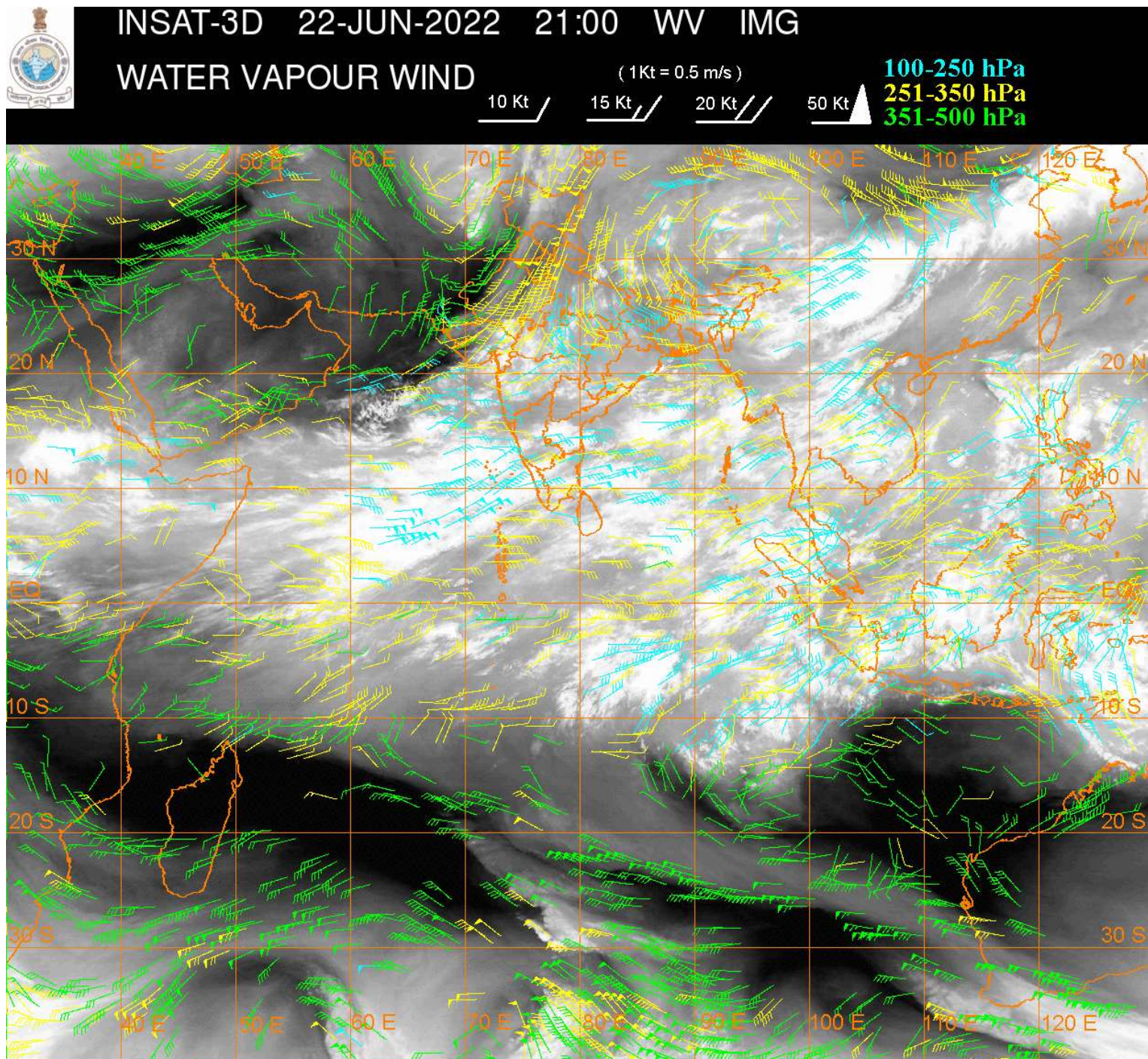
METEOSAT-8 RGB DUST PRODUCT AT 2100 UTC INDICATES DUST OVER WEST RAJ S PAK (.)



**PRECIPITATION NOWCASTING:-**

**(BASED ON SCOPE NOWCASTING TOOL AT 2100 UTC AT A LEAD TIME OF 03 HRS (MM/HR):-**

DATA NOT AVAILABLE (.)



**CLOUDS DESCRIPTION WITHIN INDIA:-**

**NORTH:-**

SCT LOW/MED CLOUDS WITH EMBDD ISOL MOD TO INT CONVTN OVER N UP (.) SCT LOW/MED CLOUDS WITH EMBDD ISOL WK TO MOD CONVTN OVER LADAKH J&K HP (.) SCT LOW/MED CLOUDS OVER UTRKND HARY DLH EC UP (.)

**EAST:-**

SCT LOW/MED CLOUDS WITH EMBDD MOD TO INT CONVTN OVER NE STATES N COTL ORS AND ISOL WK TO MOD CONVTN OVER SKM CHTGH REST ORS JHRKND BHR & BD GWB SHWB (.)

**WEST:-**

SCT LOW/MED CLOUDS WITH EMBDD INT TO V INT CONVTN OVER S GUJ (.) SCT LOW/MED CLOUDS WITH EMBDD MOD TO INT CONVTN OVER SW & NE MP N M MAHA W VID SE RAJ E GUJ KKN & GOA (.) SCT LOW/MED CLOUDS REST RAJ REST GUJ REST MAHA REST MP (.)



**SOUTH:-**

SCT LOW/MED CLOUDS WITH EMBDD INT TO V INT CONVTN OVER S TLNGN RYLSM S COTL AP (.).SCT LOW/MED CLOUDS WITH EMBDD MOD TO INT CONVTN OVER SIK N KER COTL TN LKSDP ILS ANDAMAN & NICOBAR ILS (.).SCT LOW/MED CLOUDS WITH EMBDD WK TO MOD CONVTN OVER REST KER REST TN REST KRNTK (.)

**ARABIAN SEA:-**

BKN LOW/MED CLOUDS WITH EMBDD INT TO V INT CONVTN OVER EC SE ADJ SW ARSEA GULF OF CAMBAY (.).SCT LOW/MED CLOUDS WITH EMBDD MOD TO INT CONVTN OVER WC ARSEA LKSDP ILS AREA AND WK TO MOD CONVTN OVER COMORIN AREA (.)

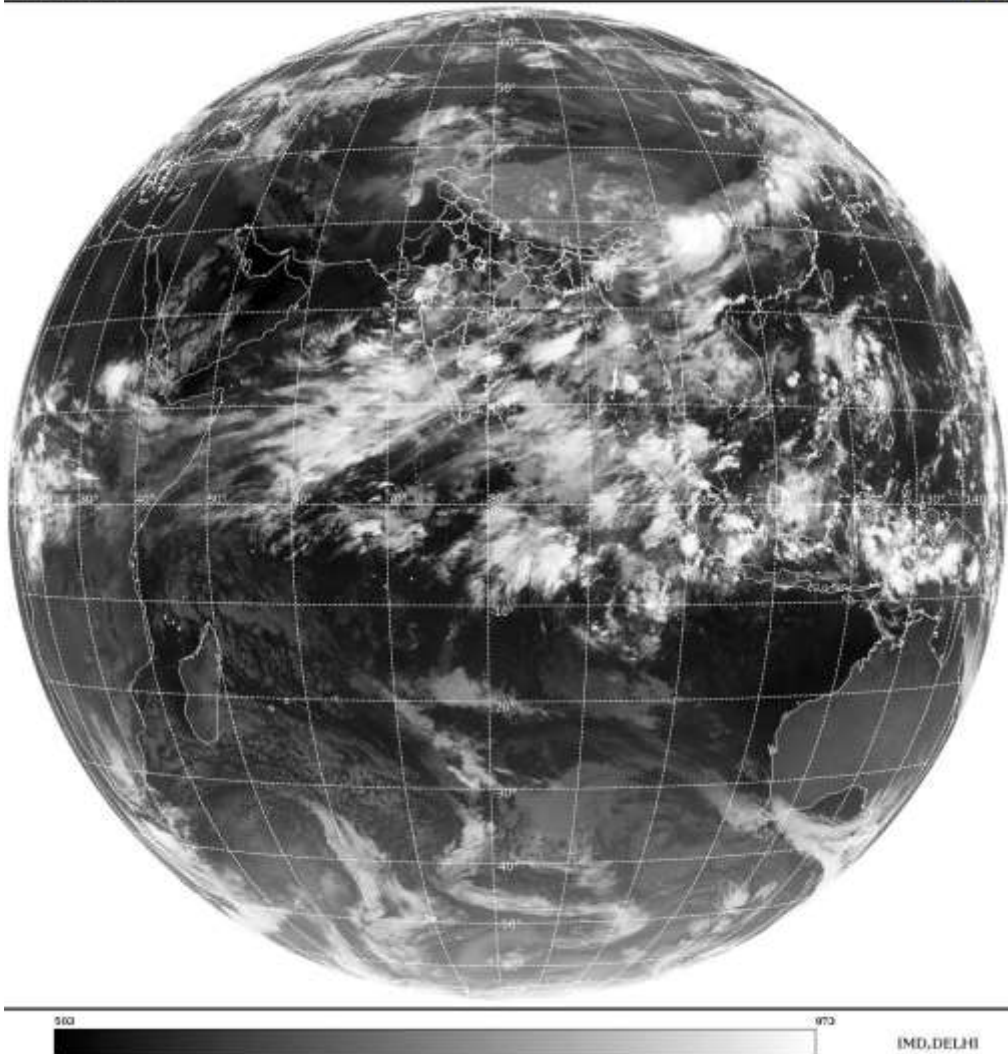
**BAY OF BENGAL & ANDAMAN SEA:-**

SCT TO BKN LOW/MED CLOUDS WITH EMBDD INT TO V INT CONVTN OVER N & CENTRAL BAY AND MOD TO INT CONVTN OVER S BAY & ANDAMAN SEA (.)

**CLOUDS DESCRIPTION OUTSIDE INDIA:-**

SAT : INSAT-3D IMG  
Thermal Infrared1 Count 10.8 um  
L1B FULL DISK

22-06-2022/(2100 to 2126) GMT  
23-06-2022/(0230 to 0256) IST



SCT LOW/MED CLOUDS WITH EMBDD MOD TO INT CONVTN OVER SRI LANKA MALDIVES N PAK NEPAL TIBET CHINA MYANMAR THAILAND GULF OF THAILAND CAMBODIA LAOS VIETNAM SUMATRA STR OF MALACCA MALAYSIA BORNEO SOUTH CHINA SEA JAVA ILS & SEA CELEBES ILS & SEA PHILIPPINES TAIWAN AND OVER INDIAN OCEAN BET LAT 5.0N TO 17.0S LONG 50.0E TO 110.0E (.)

TOO 23/0505 HRS IST=

NNNN

**LEGEND:-**

<b>REGION</b>	<b>NORTH</b>	<b>J&amp;K HP PJB HARY DLH UP UTRKND</b>
	<b>EAST</b>	<b>BHR JHRKND CHTGH OR WB SKM NORTH- EAST STATES</b>
	<b>WEST</b>	<b>RAJ MP GUJ MAHA GOA</b>
	<b>SOUTH</b>	<b>TLNGN AP KRNTK KER TN LKSDP ANDAMAN &amp; NICOBAR ILS</b>

<b>CLOUD DISTRIBUTION</b>	<b>ISOL</b>	<b>ISOLATED (LESS THAN 25%)</b>
	<b>SCT</b>	<b>SCATTERED (25 TO 50%)</b>
	<b>BKN</b>	<b>BROKEN (51 TO 75%)</b>
	<b>SLD</b>	<b>SOLID (GREATER THAN 75%)</b>
<b>CLOUDS TOP TEMPERATURE</b>	<b>CTT</b>	<b>CLOUD TOP TEMPERATURE</b>
<b>CONVECTION</b>	<b>WK CONVTN</b>	<b>WEAK CONVECTION (CTT GREATER THAN -25°C)</b>
	<b>MOD CONVTN</b>	<b>MODERATE CONVECTION (CTT BETWEEN -25°C TO -40°C)</b>
	<b>INT CONVTN</b>	<b>INTENSE CONVECTION (CTT BETWEEN -41°C TO -70°C)</b>
	<b>V INT CONVTN</b>	<b>VERY INTENSE CONVECTION (CTT LESS THAN -70°C)</b>
<b>METEOROLOGICAL SUB-DIVISIONS, STATES &amp; UNION TERRITORIES</b>	<b>ARUPR</b>	<b>ARUNACHAL PRADESH</b>
	<b>BHR</b>	<b>BIHAR</b>
	<b>CHTGH</b>	<b>CHHATTISGARH</b>
	<b>COTL AP</b>	<b>COASTAL ANDHRA PRADESH</b>
	<b>COTL KRNTK</b>	<b>COASTAL KARNATAKA</b>
	<b>COTL ORS</b>	<b>COASTAL ORISSA</b>
	<b>GUJ</b>	<b>GUJARAT</b>
	<b>GWB</b>	<b>GANGETIC WEST BENGAL</b>
	<b>HARY</b>	<b>HARYANA</b>
	<b>DLH</b>	<b>DELHI</b>
	<b>HP</b>	<b>HIMACHAL PRADESH</b>
	<b>J&amp;K</b>	<b>JAMMU AND KASHMIR</b>
	<b>JHRKND</b>	<b>JHARKHAND</b>
	<b>KER</b>	<b>KERALA</b>
	<b>KKN</b>	<b>KONKAN</b>
	<b>LKSDP</b>	<b>LAKSHADWEEP</b>
	<b>M MAHA</b>	<b>MADHYA MAHARASHTRA</b>
	<b>MAHA</b>	<b>MAHARASHTRA</b>
	<b>MANI</b>	<b>MANIPUR</b>
	<b>MEGHA</b>	<b>MEGHALAYA</b>
	<b>MIZO</b>	<b>MIZORAM</b>
	<b>MP</b>	<b>MADHYA PRADESH</b>
		<b>MRTHWD</b>
<b>NAGA</b>		<b>NAGALAND</b>

	<b>N COTL AP</b>	<b>NORTH COASTAL ANDHRA PRADESH</b>
	<b>NIK</b>	<b>NORTH INTERIOR KARNATAKA</b>
	<b>ORS</b>	<b>ORISSA</b>
	<b>PJB</b>	<b>PUNJAB</b>
	<b>RAJ</b>	<b>RAJASTHAN</b>
	<b>RYLSM</b>	<b>RAYALASEEMA</b>
	<b>SAU &amp; KUTCH</b>	<b>SAURASHTRA &amp; KUTCH</b>
	<b>SHWB</b>	<b>SUB-HIMALAYAN WEST BENGAL</b>
	<b>SIK</b>	<b>SOUTH INTERIOR KARNATAKA</b>
	<b>SKM</b>	<b>SIKKIM</b>
	<b>TLNGN</b>	<b>TELANGANA</b>
	<b>TN</b>	<b>TAMIL NADU</b>
	<b>TRP</b>	<b>TRIPURA</b>
	<b>UP</b>	<b>UTTAR PRADESH</b>
	<b>UTRKN</b>	<b>UTTARAKHAND</b>
	<b>VID</b>	<b>VIDHARBHA</b>
	<b>SHWB</b>	<b>SUB HIMALAYAN WEST BENGAL</b>
	<b>GWB</b>	<b>GANGETIC WEST BENGAL</b>
	<b>ARSEA</b>	<b>ARABIAN SEA</b>
	<b>ILS</b>	<b>ISLANDS</b>
<b>MISCELLANEOUS</b>	<b>ASSW</b>	<b>IN ASSOCIATION WITH</b>
	<b>ASSTD</b>	<b>ASSOCIATED</b>
	<b>LLC</b>	<b>LOW LEVEL CIRCULATION</b>
	<b>EMBDD</b>	<b>EMBEDDED</b>
	<b>N/HOOD</b>	<b>NEIGHBOURHOOD</b>
	<b>EXT</b>	<b>EXTREME</b>