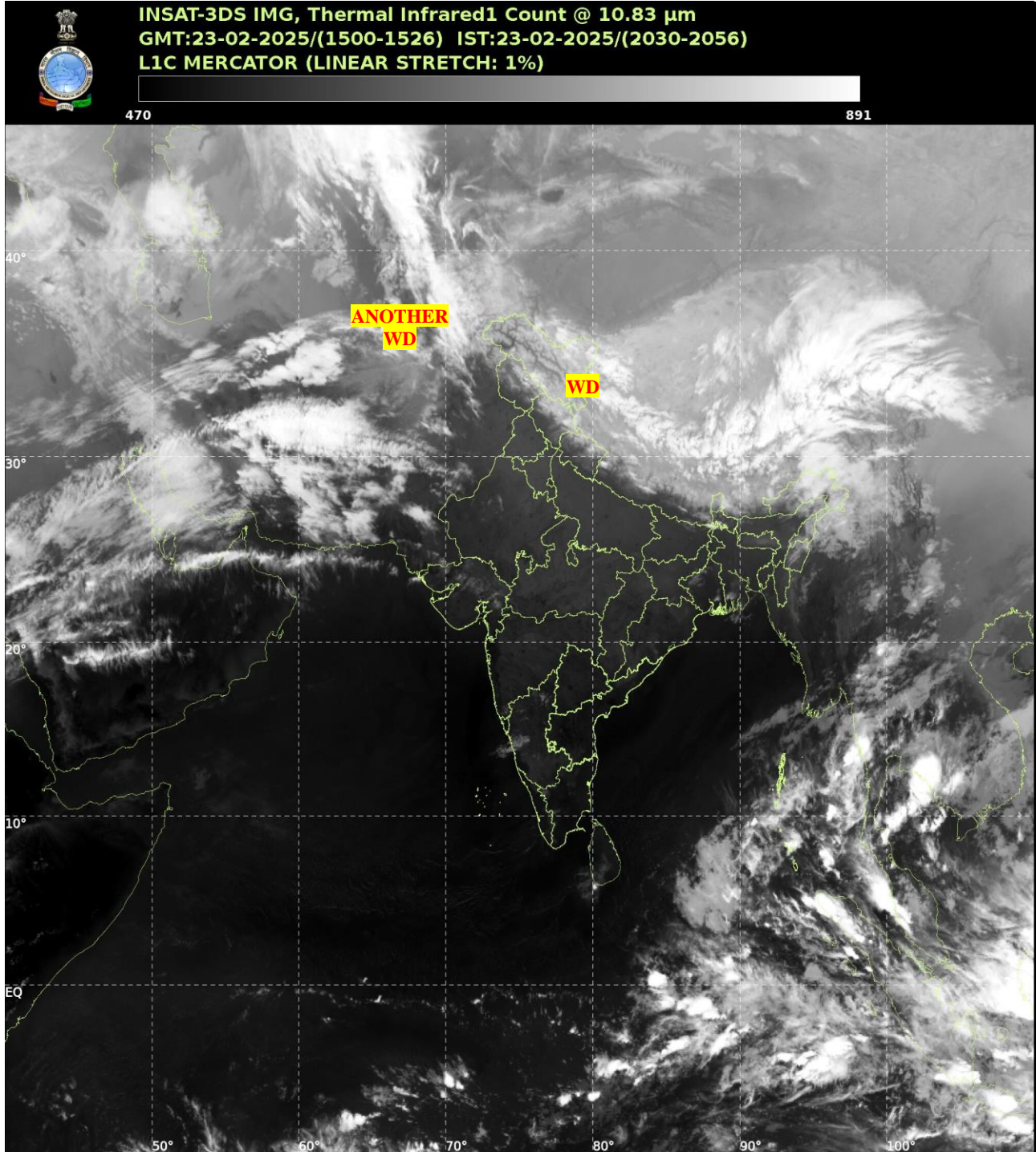




भारत मौसम विज्ञान विभाग
पृथ्वी विज्ञान मंत्रालय
India Meteorological Department
Ministry of Earth Sciences



**SATELLITE BULLETIN BASED ON SATELLITE
IMAGERIES AND PRODUCTS**
23.02.2025 TIME 1800 UTC



TCIN50 DEMS 231800

SATELLITE BULLETIN BASED ON INSAT-3DS PIC OF 231700 UTC (.)

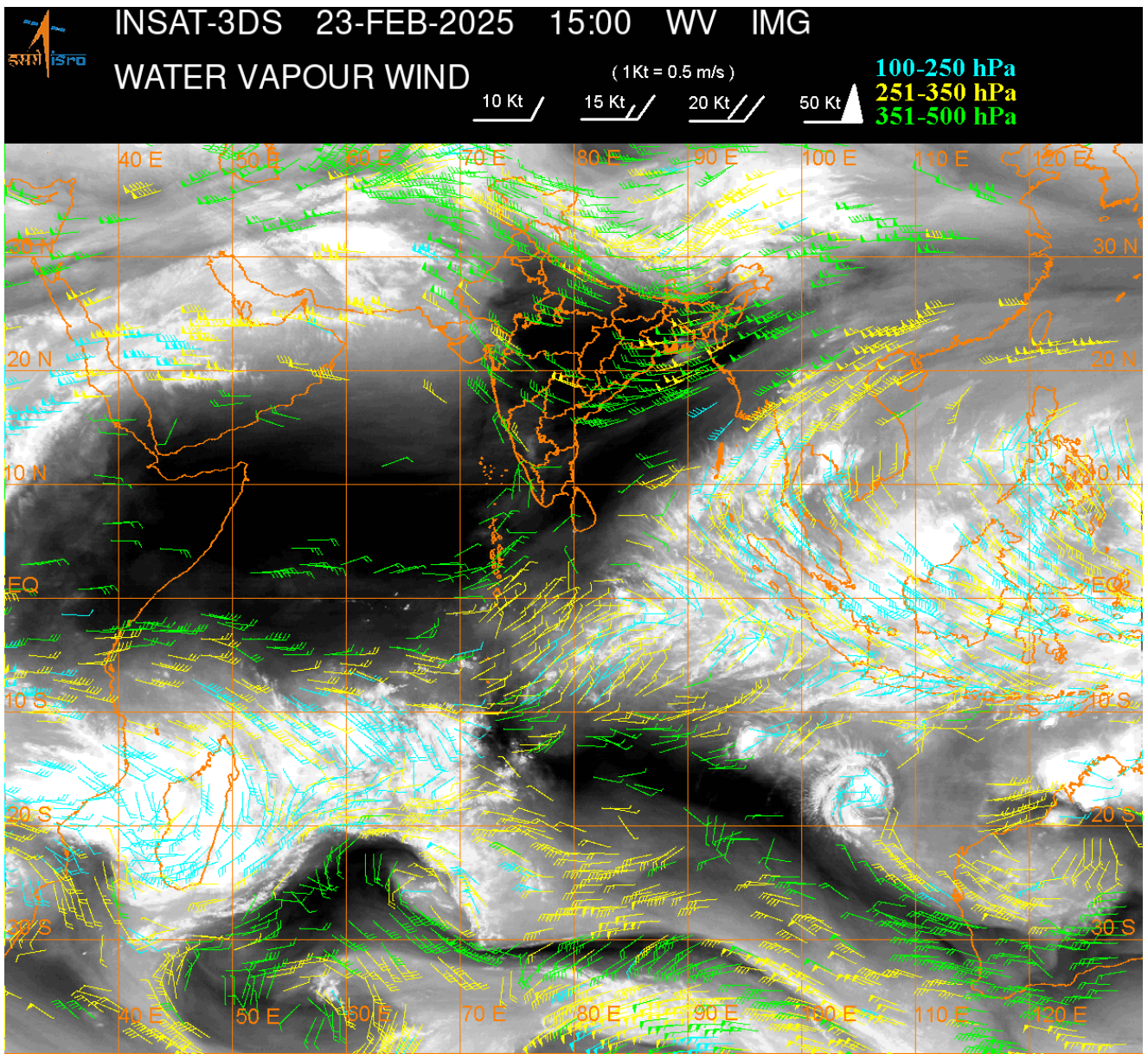
REGION COVERED BETWEEN LAT 50.0°N TO 35.0°S AND LONG 40.0°E TO 125.0°E (.)

SALIENT FEATURES:-

WESTERN DISTURBANCE:-

SCT MULTILAYERED CLOUDS OVER LADAKH N HP N UTRKND TIBET ADJ CHINA IN ASSW
WD OVER THE AREA (.)

SCT MULTILAYERED CLOUDS OVER IRAQ IRAN AFGAN PAK AND N/HOOD IN ASSW
ANOTHER WD OVER THE AREA (.)



CLOUDS DESCRIPTION WITHIN INDIA:-

NORTH:-

SCT LOW/MED CLOUDS WITH EMBDD WK TO MOD CONVTN OVER LADAKH J&K N HP N UTRKND (.) SCT LOW/MED CLOUDS OVER S HP S UTRKND (.)

EAST:-

SCT LOW/MED CLOUDS WITH EMBDD WK TO MOD CONVTN OVER N GWB SKM ARUPR NE ASSAM (.) SCT LOW/MED CLOUDS OVER BHR JHRKND ORS S GWB SOUTH SHWB MEGHA REST ASSAM MANI (.)

WEST:-

ISOL TO SCT LOW/MED CLOUDS OVER GUJ W RAJ (.)

SOUTH:-

SCT LOW/MED CLOUDS WITH EMBDD WK TO MOD CONVTN OVER ANDAMAN & NICOBAR ILS AREA (.) ISOL TO SCT LOW/MED CLOUDS OVER KRNTK KER TN (.)

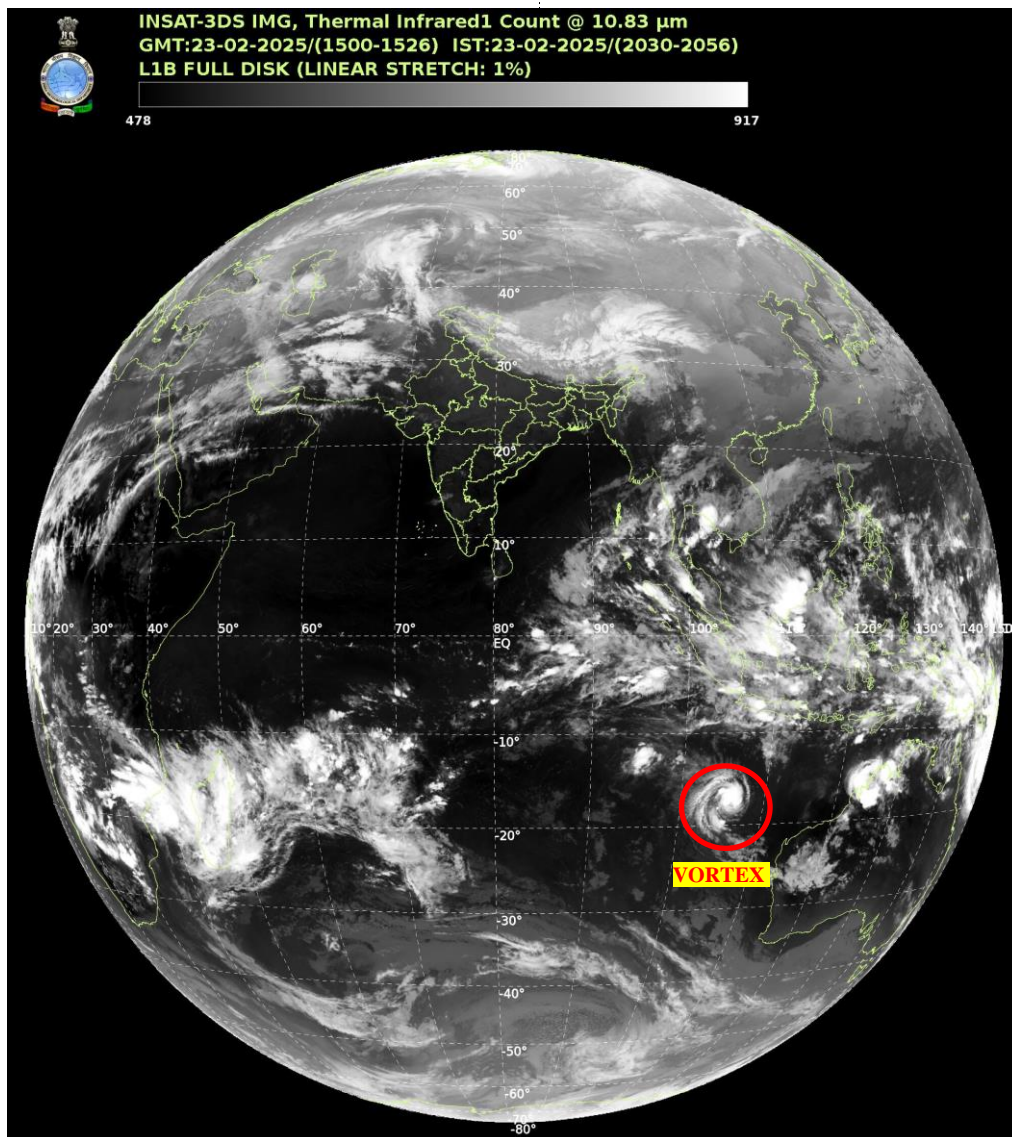
ARABIAN SEA:-

SCT LOW/MED CLOUDS WITH EMBDD WK TO MOD CONVTN OVER NORTH ARSEA (.) SCT LOW/MED CLOUDS OVER LKSDP ILS AREA (.)

BAY OF BENGAL & ANDAMAN SEA:-

SCT LOW/MED CLOUDS WITH EMBDD MOD TO INT CONVTN OVER SE BAY AND ANDAMAN SEA (.) SCT LOW/MED CLOUDS OVER EC BAY (.)

CLOUDS DESCRIPTION OUTSIDE INDIA:-



VORTEX OVER SOUTH INDIAN OCEAN:-

VORTEX OVER SOUTH INDIAN OCEAN (AREA G25) CENTERED NEAR 17.5S / 105.7E (.) INTENSITY T3.0/3.0 (.) MAXIMUM SUSTAINED WINDS 34-47 KTS (.) ASSTD SCT TO BKN LOW/MED CLOUDS WITH EMBDD INT TO V INT CONVTN OVER AREA BET LAT 14.0S TO 21.0S LONG 101.0E TO 107.0E (.)

SCT LOW/MED CLOUDS WITH EMBDD MOD TO INT CONVTN OVER MALDIVES PAK TIBET BHUTAN CHINA HAINAN THAILAND GULF OF THAILAND CAMBODIA VIETNAM SUMATRA STR OF MALACCA MALAYSIA BORNEO SOUTH CHINA SEA JAVA ILS & SEA CELEBES ILS & SEA PHILIPPINES SULU SEA MADAGASCAR MOZAMBIQUE CHANNEL AND OVER INDIAN OCEAN BET LAT 5.0N TO 35.0S LONG 40.0E TO 125.0E (.)

TOO 23/2330 EF=

NNNN

LEGEND:-

REGION	NORTH	J&K HP PJB HARY DLH UP UTRKND
	EAST	BHR JHRKND CHTGH ORS WB SKM NORTH- EAST STATES
	WEST	RAJ MP GUJ MAHA GOA
	SOUTH	TLNGN AP KRNTK KER TN LKSDP ANDAMAN & NICOBAR ILS
	ISOL	ISOLATED (LESS THAN 25%)
	SCT	SCATTERED (25 TO 50%)

CLOUD DISTRIBUTION	BKN	BROKEN (51 TO 75%)	
	SLD	SOLID (GREATER THAN 75%)	
CLOUDS TOP TEMPERATURE	CTT	CLOUD TOP TEMPERATURE	
CONVECTION	WK CONVTN	WEAK CONVECTION (CTT GREATER THAN -25°C)	
	MOD CONVTN	MODERATE CONVECTION (CTT BETWEEN -25°C TO -40°C)	
	INT CONVTN	INTENSE CONVECTION (CTT BETWEEN -41°C TO -70°C)	
	V INT CONVTN	VERY INTENSE CONVECTION (CTT LESS THAN -70°C)	
METEOROLOGICAL SUB- DIVISIONS, STATES & UNION TERITORIES	ARUPR	ARUNACHAL PRADESH	
	BHR	BIHAR	
	CHTGH	CHHATTISGARH	
	COTL AP	COASTAL ANDHRA PRADESH	
	COTL KRNTK	COASTAL KARNATAKA	
	COTL ORS	COASTAL ORISSA	
	GUJ	GUJARAT	
	GWB	GANGETIC WEST BENGAL	
	HARY	HARYANA	
	DLH	DELHI	
	HP	HIMACHAL PRADESH	
	J&K	JAMMU AND KASHMIR	
	JHRKND	JHARKHAND	
	KER	KERALA	
	KN	KONKAN	
	LKSDP	LAKSHADWEEP	
	M MAHA	MADHYA MAHARASHTRA	
	MAHA	MAHARASHTRA	
	MANI	MANIPUR	
	MEGHA	MEGHALAYA	
	MIZO	MIZORAM	
	MP	MADHYA PRADESH	
		MRTHWD	MARATHWADA
		NAGA	NAGALAND
N COTL AP		NORTH COASTAL ANDHRA PRADESH	
NIK		NORTH INTERIOR KARNATAKA	
ORS		ORISSA	
PJB		PUNJAB	
RAJ		RAJASTHAN	
RYLSM		RAYALASEEMA	
SAU & KUTCH		SAURASHTRA & KUTCH	
SHWB		SUB-HIMALAYAN WEST BENGAL	
SIK		SOUTH INTERIOR KARNATAKA	
SKM		SIKKIM	
TLNGN		TELANGANA	
TN		TAMIL NADU	

	TRP	TRIPURA
	UP	UTTAR PRADESH
	UTRKND	UTTARAKHAND
	VID	VIDHARBHA
	SHWB	SUB HIMALAYAN WEST BENGAL
	GWB	GANGETIC WEST BENGAL
	ARSEA	ARABIAN SEA
	ILS	ISLANDS
MISCELLANEOUS	ASSW	IN ASSOCIATION WITH
	ASSTD	ASSOCIATED
	LLC	LOW LEVEL CIRCULATION
	EMBDD	EMBEDDED
	N/HOOD	NEIGHBOURHOOD
	EXT	EXTREME