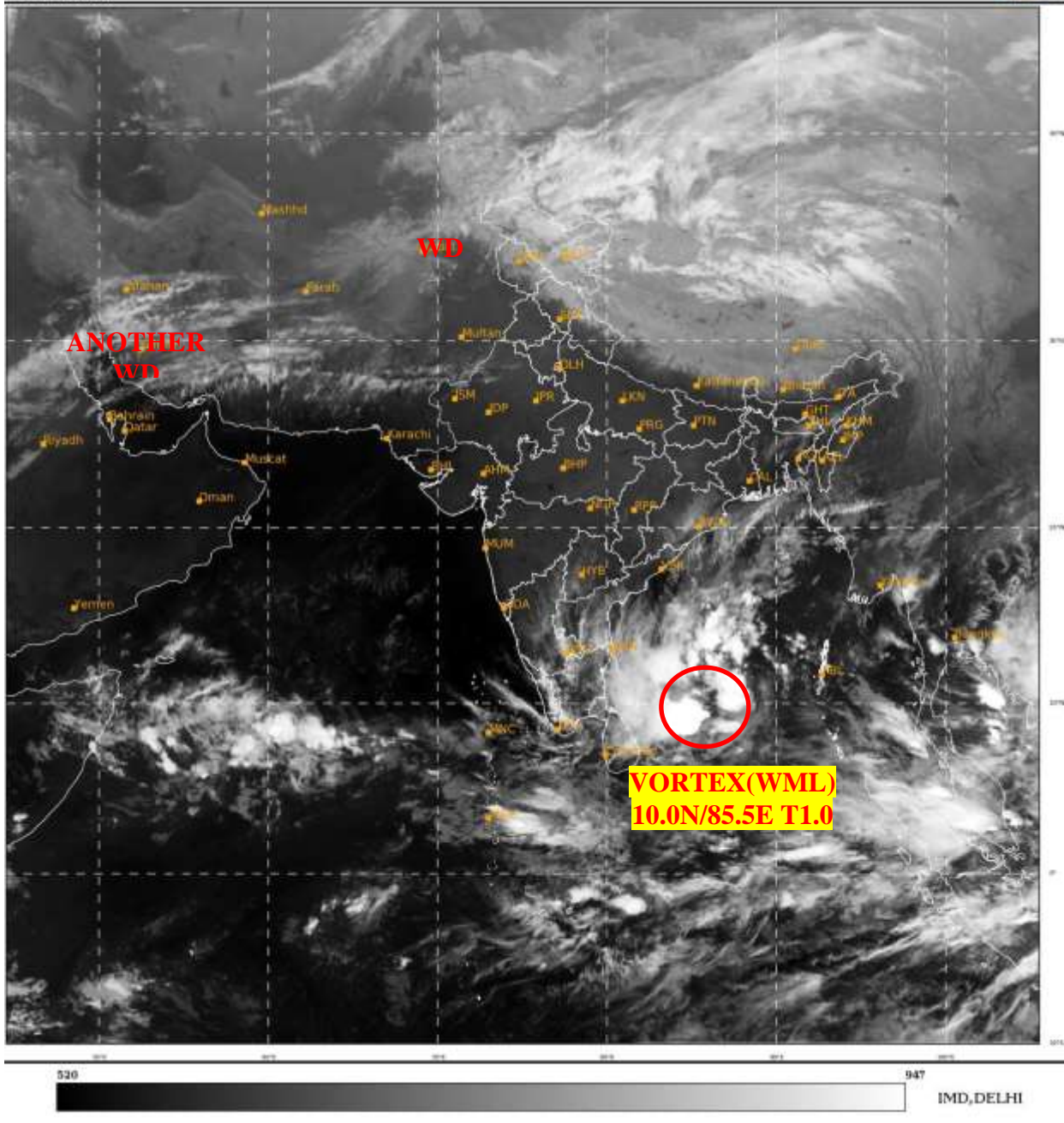




**SATELLITE BULLETIN BASED ON SATELLITE
IMAGERIES AND PRODUCTS**
19.11.2022 TIME 1500 UTC

SAT : INSAT-3D IMG
IMG_TIR1 10.8 um
LIC Mercator

19-11-2022/(1500 to 1526) GMT
19-11-2022/(2030 to 2056) IST



TCIN50 DEMS 191500

SATELLITE BULLETIN BASED ON INSAT-3D PIC OF 191500 UTC (.)

REGION COVERED BETWEEN LAT 50.0°N TO 35.0°S AND LONG 40.0°E TO 125.0°E (.)

SALIENT FEATURES:-

VORTEX(WML) OVER CENTRAL PARTS OF SOUTH BAY AND N/HOOD:-

VORTEX (WML) OVER CENTRAL PARTS OF SOUTH BAY & N/HOOD CENTERED WITHIN HALF OF DEGREE **10.0N/85.5E** (.) INTENSISTY **T1.0** (.) ASSTD SCT TO BKN LOW/MED CLOUDS WITH EMBDD INT TO V INT CONVTN OVER SOUTH ADJ CENTRAL BAY BET LAT 8.0N TO 14.0N LONG 80.0E TO 88.0E (.) CONVECTION HAS INCREASED DURING LAST 03 HRS (.) MINIMUM CTT **MINUS 93** DEGREE CEL (.)

WESTERN DISTURBANCE (WD):-

SCT MULTILAYERED CLOUDS OVER EXT N PAK J&K LADAKH & N/HOOD IN ASSW **WD** OVER THE AREA (.)

SCT MULTILAYERED CLOUDS OVER IRAN & N/HOOD IN ASSW **ANOTHER WD** OVER THE AREA (.)



INSAT-3D 19-NOV-2022 15:00 WV IMG

WATER VAPOUR WIND

(1Kt = 0.5 m/s)

10 Kt

15 Kt

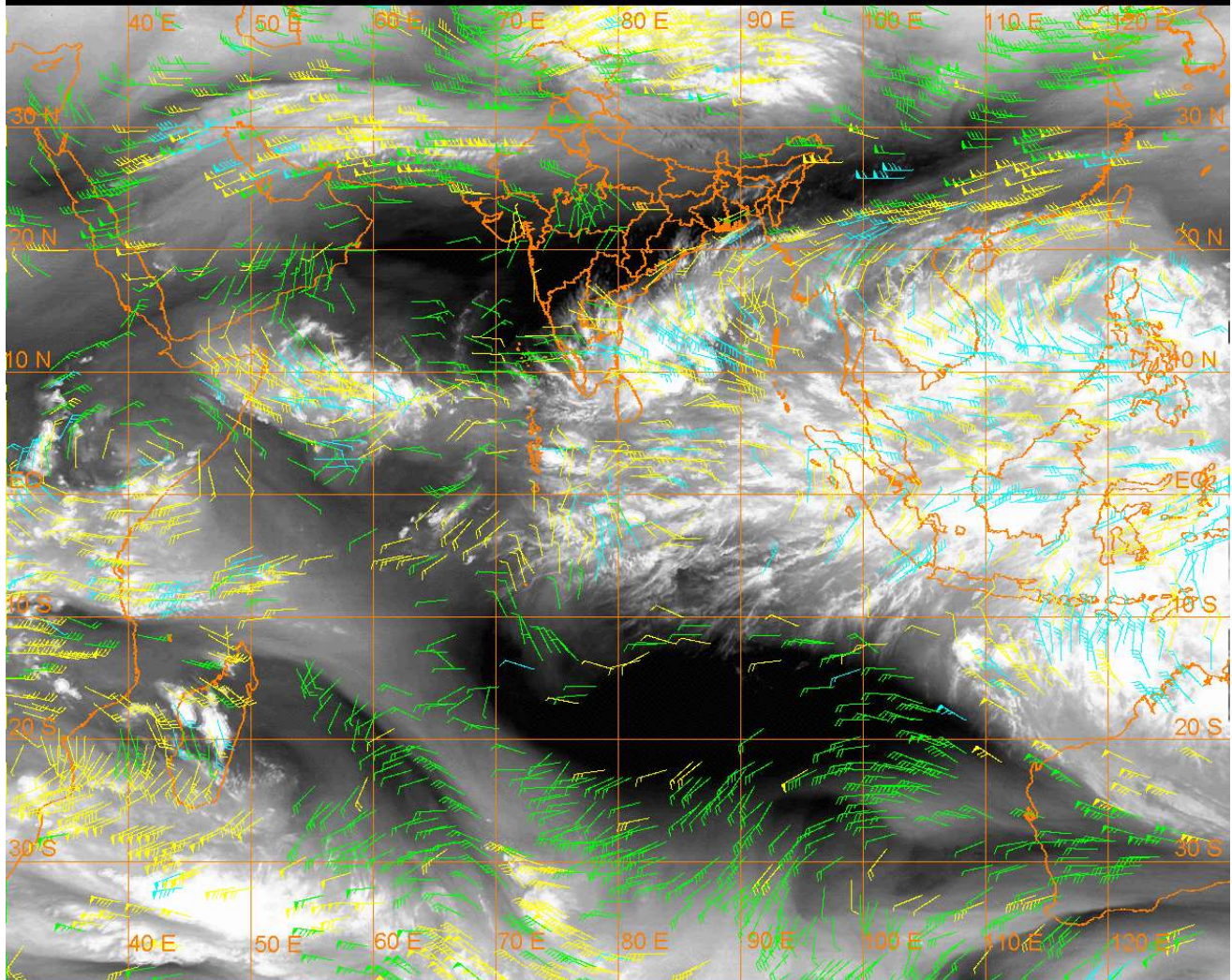
20 Kt

50 Kt

100-250 hPa

251-350 hPa

351-500 hPa



CLOUDS DESCRIPTION WITHIN INDIA:-

NORTH:-

SCT LOW/MED CLOUDS WITH EMBDD MOD TO INT CONVTN OVER LADAKH AND WK TO MOD CONVTN OVER J&K N HP N UTRKND (.) SCT LOW/MED CLOUDS OVER S HP S UTRKND PJB N HARY ADJ NW UP (.)

EAST:-

SCT LOW/MED CLOUDS WITH EMBDD ISOL WK TO MOD CONVTN OVER E ORS E MEGHA ADJ C ASSAM & BD (.) SCT LOW/MED CLOUDS OVER CHTGH REST ORS JHRKND GWB SHWB SKM REST NE STATES (.)

WEST:-

SCT LOW/MED CLOUDS WITH EMBDD ISOL WK TO MOD CONVTN OVER NW RAJ (.)

SOUTH:-

SCT LOW/MED CLOUDS WITH EMBDD MOD TO INT CONVTN OVER S COTL AP RYLSM SIK KER TN (.) SCT LOW/MED CLOUDS WITH EMBDD ISOL WK TO MOD CONVTN OVER TLNGN N COTL AP LKSDP ILS ANDAMAN & NICOBAR ILS (.) SCT LOW/MED CLOUDS OVER REST KRNTK (.)

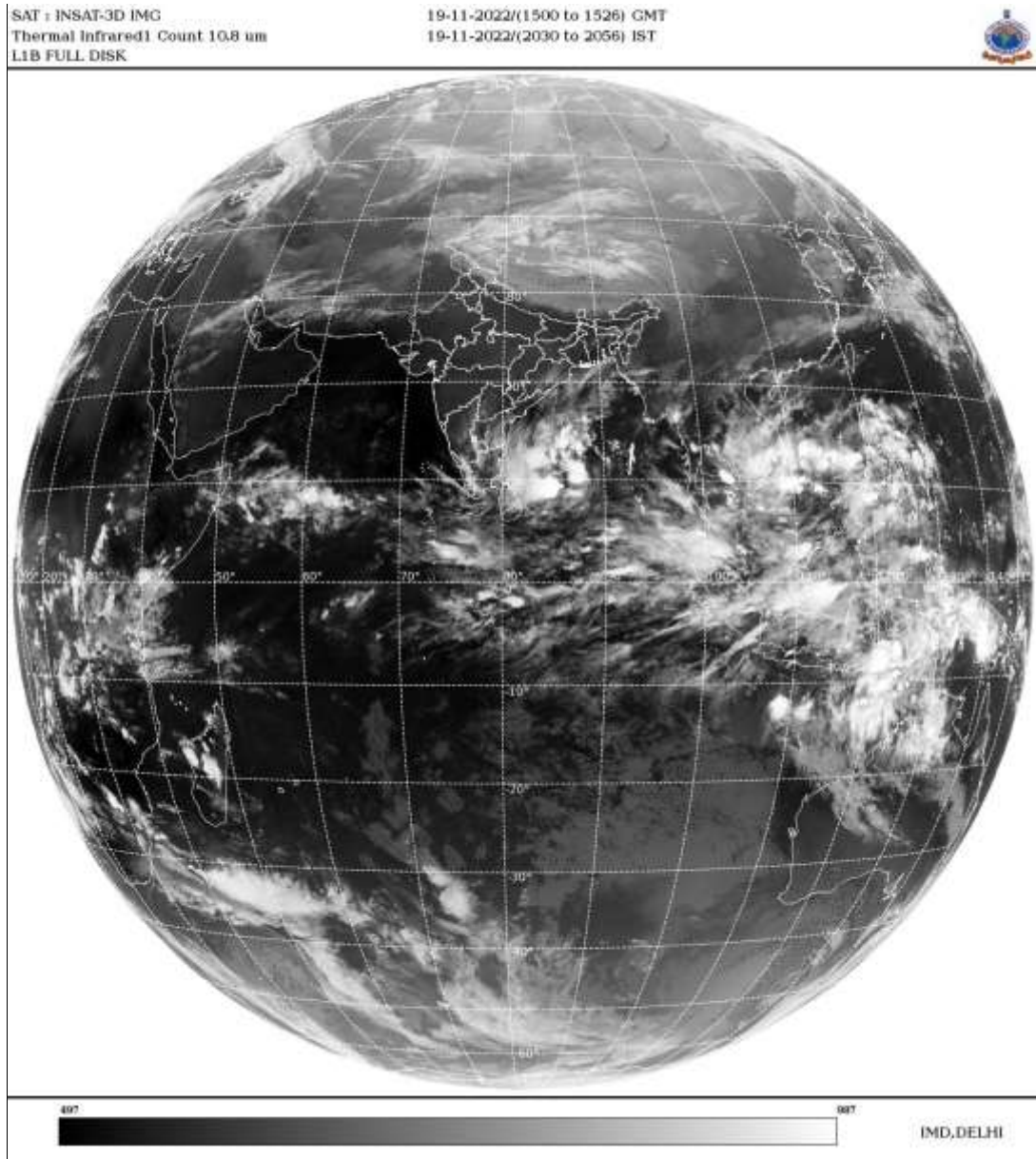
ARABIAN SEA:-

SCT TO BKN LOW/MED CLOUDS WITH EMBDD INT TO V INT CONVTN OVER SW ARSEA (.) SCT LOW/MED CLOUDS WITH EMBDD ISOL MOD TO INT CONVTN OVER SE ARSEA AND COMORIN AREA (.)

BAY OF BENGAL & ANDAMAN SEA:-

SCT TO BKN LOW/MED CLOUDS WITH EMBDD INT TO V INT CONVTN OVER WC & SW BAY (.) SCT LOW/MED CLOUDS WITH EMBDD ISOL MOD TO INT CONVTN OVER REST BAY ANDAMAN SEA (.)

CLOUDS DESCRIPTION OUTSIDE INDIA:-



SCT LOW/MED CLOUDS WITH EMBDD MOD TO INT CONVTN OVER SRI LANKA PALK STR GULF OF MANNAR MALDIVES TIBET CHINA S MYANMAR THAILAND GULF OF THAILAND CAMBODIA LAOS VIETNAM SUMATRA STR OF MALACCA MALAYSIA BORNEO SOUTH CHINA SEA JAVA ILS & SEA CELEBES ILS & SEA PHILIPPINES SULU SEA MADAGASCAR AND OVER INDIAN OCEAN BET LAT 5.0N TO 10.0S LONG 40.0E TO 110.0E AND BET LAT 10.0S TO 20.0S LONG 108.0E TO 120.0E (.)

TOO 19/2130 HRS IST=

NNNN

LEGEND:-

| | | |
|---------------|--------------|--|
| REGION | NORTH | J&K HP PJB HARY DLH UP UTRKND |
| | EAST | BHR JHRKND CHTGH OR WB SKM NORTH- EAST STATES |
| | WEST | RAJ MP GUJ MAHA GOA |
| | SOUTH | TLNGN AP KRNTK KER TN LKSDP ANDAMAN & NICOBAR ILS |

| | | |
|---------------------------|-------------|---------------------------------|
| CLOUD DISTRIBUTION | ISOL | ISOLATED (LESS THAN 25%) |
| | SCT | SCATTERED (25 TO 50%) |
| | BKN | BROKEN (51 TO 75%) |

| | | | |
|---|------------------------|---|-------------------|
| | SLD | SOLID (GREATER THAN 75%) | |
| CLOUDS TOP TEMPERATURE | CTT | CLOUD TOP TEMPERATURE | |
| CONVECTION | WK CONVTN | WEAK CONVECTION (CTT GREATER THAN -25°C) | |
| | MOD CONVTN | MODERATE CONVECTION (CTT BETWEEN -25°C TO -40°C) | |
| | INT CONVTN | INTENSE CONVECTION (CTT BETWEEN -41°C TO -70°C) | |
| | V INT CONVTN | VERY INTENSE CONVECTION (CTT LESS THAN -70°C) | |
| METEOROLOGICAL SUB-DIVISIONS, STATES & UNION TERRITORIES | ARUPR | ARUNACHAL PRADESH | |
| | BHR | BIHAR | |
| | CHTGH | CHHATTISGARH | |
| | COTL AP | COASTAL ANDHRA PRADESH | |
| | COTL KRNTK | COASTAL KARNATAKA | |
| | COTL ORS | COASTAL ORISSA | |
| | GUJ | GUJARAT | |
| | GWB | GANGETIC WEST BENGAL | |
| | HARY | HARYANA | |
| | DLH | DELHI | |
| | HP | HIMACHAL PRADESH | |
| | J&K | JAMMU AND KASHMIR | |
| | JHRKND | JHARKHAND | |
| | KER | KERALA | |
| | KKN | KONKAN | |
| | LKSDP | LAKSHADWEEP | |
| | M MAHA | MADHYA MAHARASHTRA | |
| | MAHA | MAHARASHTRA | |
| | MANI | MANIPUR | |
| | MEGHA | MEGHALAYA | |
| | MIZO | MIZORAM | |
| | MP | MADHYA PRADESH | |
| | | MRTHWD | MARATHWADA |
| | | NAGA | NAGALAND |
| | N COTL AP | NORTH COASTAL ANDHRA PRADESH | |
| | NIK | NORTH INTERIOR KARNATAKA | |
| | ORS | ORISSA | |
| | PJB | PUNJAB | |
| | RAJ | RAJASTHAN | |
| | RYLSM | RAYALASEEMA | |
| | SAU & KUTCH | SAURASHTRA & KUTCH | |
| | SHWB | SUB-HIMALAYAN WEST BENGAL | |
| | SIK | SOUTH INTERIOR KARNATAKA | |
| | SKM | SIKKIM | |
| | TLNGN | TELANGANA | |
| | TN | TAMIL NADU | |
| | TRP | TRIPURA | |

| | | |
|----------------------|---------------|----------------------------------|
| | UP | UTTAR PRADESH |
| | UTRKND | UTTARAKHAND |
| | VID | VIDHARBHA |
| | SHWB | SUB HIMALAYAN WEST BENGAL |
| | GWB | GANGETIC WEST BENGAL |
| | ARSEA | ARABIAN SEA |
| | ILS | ISLANDS |
| MISCELLANEOUS | ASSW | IN ASSOCIATION WITH |
| | ASSTD | ASSOCIATED |
| | LLC | LOW LEVEL CIRCULATION |
| | EMBDD | EMBEDDED |
| | N/HOOD | NEIGHBOURHOOD |
| | EXT | EXTREME |