



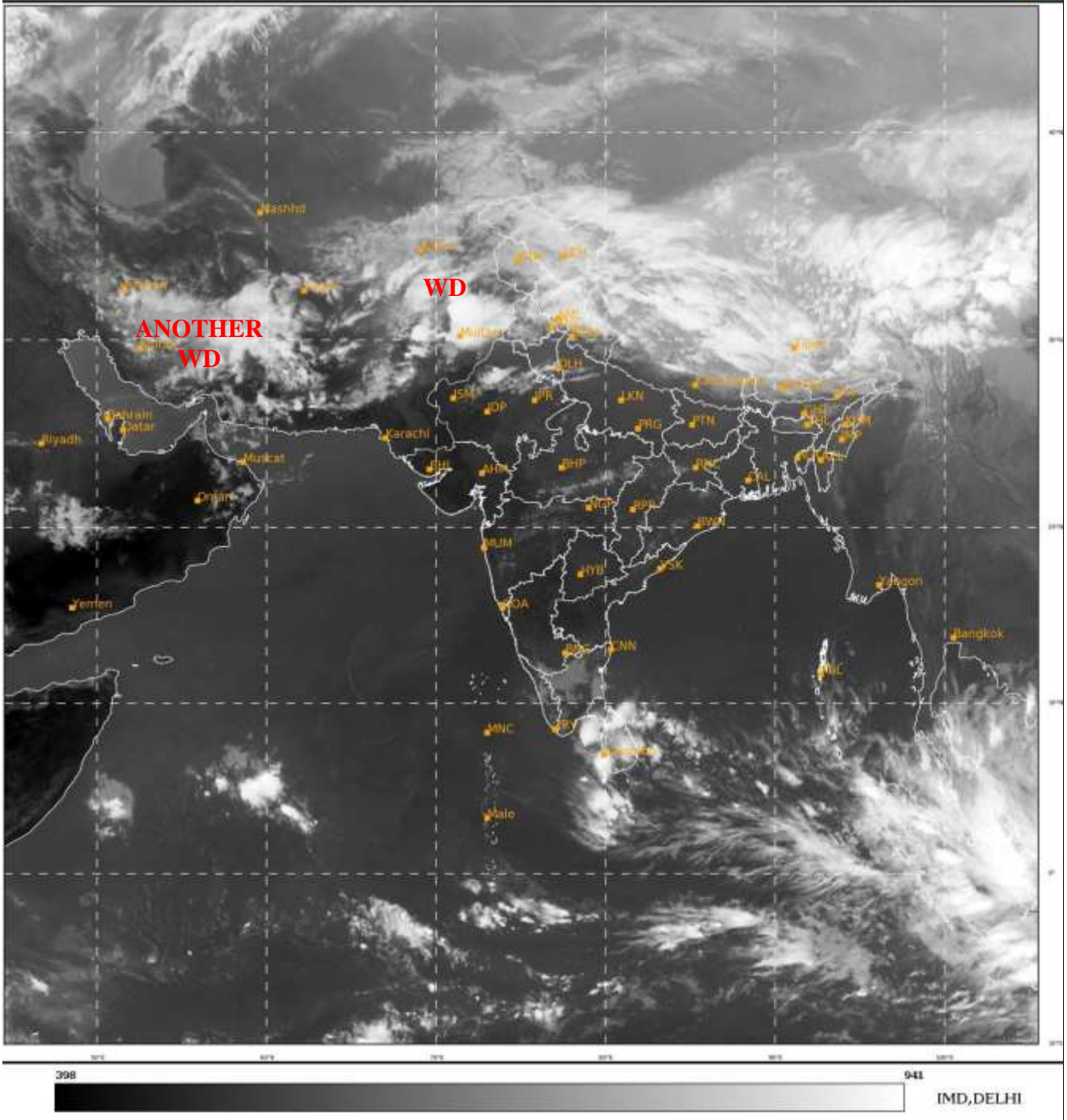
भारत मौसम विज्ञान विभाग  
पृथ्वी विज्ञान मंत्रालय  
India Meteorological Department  
Ministry of Earth Sciences



**SATELLITE BULLETIN BASED ON SATELLITE  
IMAGERIES AND PRODUCTS**  
**28.02.2023 TIME 1200 UTC**

SAT : INSAT-3D IMG  
IMG\_TIR1 10.8 um  
LIC Mercator

28-02-2023/(1200 to 1226) GMT  
28-02-2023/(1730 to 1756) IST



TCIN50 DEMS 281200

SATELLITE BULLETIN BASED ON INSAT-3D PIC OF 281200 UTC (.)

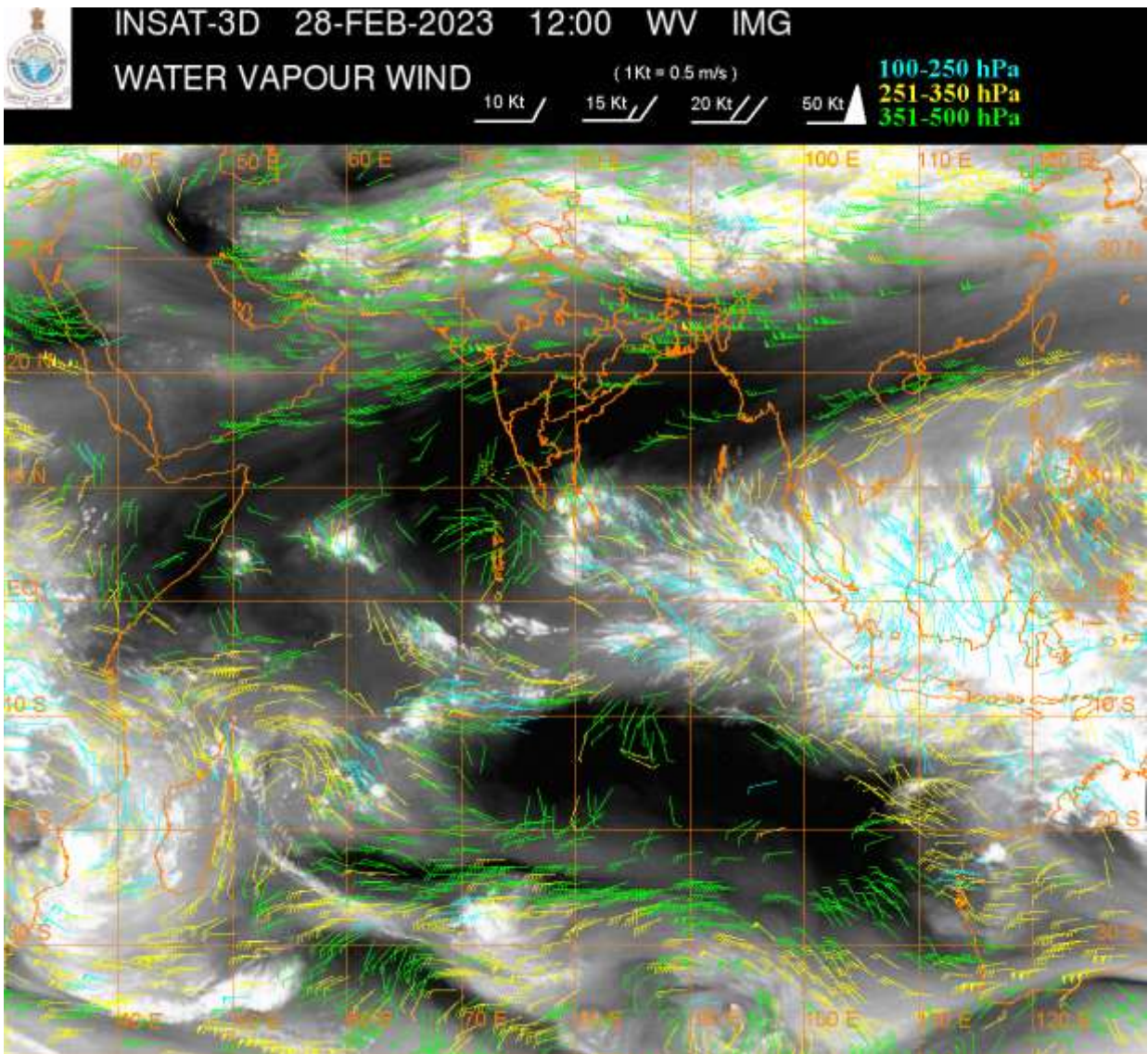
REGION COVERED BETWEEN LAT 50.0°N TO 35.0°S AND LONG 40.0°E TO 125.0°E (.)

**SALIENT FEATURES:-**

**WESTERN DISTURBANCE (WD):-**

SCT TO BKN MULTILAYERED CLOUDS OVER E AFGAN PAK J&K LADAKH HP PJB UTRKND TIBET ADJ CHINA IN ASSW **WD** OVER THE AREA (.)

SCT MULTILAYERED CLOUDS OVER IRAN AND N/HOOD IN ASSW **ANOTHER WD** OVER THE AREA (.)



**CLOUDS DESCRIPTION WITHIN INDIA:-**

**NORTH:-**

SCT TO BKN LOW/MED CLOUDS WITH EMBDD MOD TO INT CONVTN OVER LADAKH J&K HP N UTRKND N PJB S HARY (.) SCT LOW/MED CLOUDS WITH EMBDD WK TO MOD CONVTN OVER S UTRKND S PJB N HARY DLH NW UP (.)

**EAST:-**

SCT LOW/MED CLOUDS WITH EMBDD MOD TO INT CONVTN OVER ARUPR (.) SCT LOW/MED CLOUDS WITH EMBDD WK TO MOD CONVTN OVER SW JHRKND N CHTGH N SHWB SKM C & E ASSAM NAGA (.) SCT LOW/MED CLOUDS OVER S CHTGH ORS REST NE STATES (.)

**WEST:-**

SCT LOW/MED CLOUDS WITH EMBDD MOD TO INT CONVTN OVER NW RAJ (.) SCT LOW/MED CLOUDS WITH EMBDD WK TO MOD CONVTN OVER NE RAJ S MP (.) SCT LOW/MED CLOUDS OVER SW RAJ N MP MAHA (.)

**SOUTH:-**

SCT LOW/MED CLOUDS WITH EMBDD ISOL WK TO MOD CONVTN OVER KER TN NICOBAR ILS (.) SCT LOW/MED CLOUDS OVER S SIK N TLNGN N COTL AP S RYLSM ANDAMAN ILS (.)

**ARABIAN SEA:-**

SCT LOW/MED CLOUDS WITH EMBDD INT TO V INT CONVTN OVER SW ARSEA ADJ EQUATORIAL INDIAN OCEAN (.) SCT LOW/MED CLOUDS WITH EMBDD MOD TO INT CONVTN OVER COMORIN AREA AND ISOL WK TO MOD CONVTN OVER NW ARSEA (.)

**BAY OF BENGAL & ANDAMAN SEA:-**

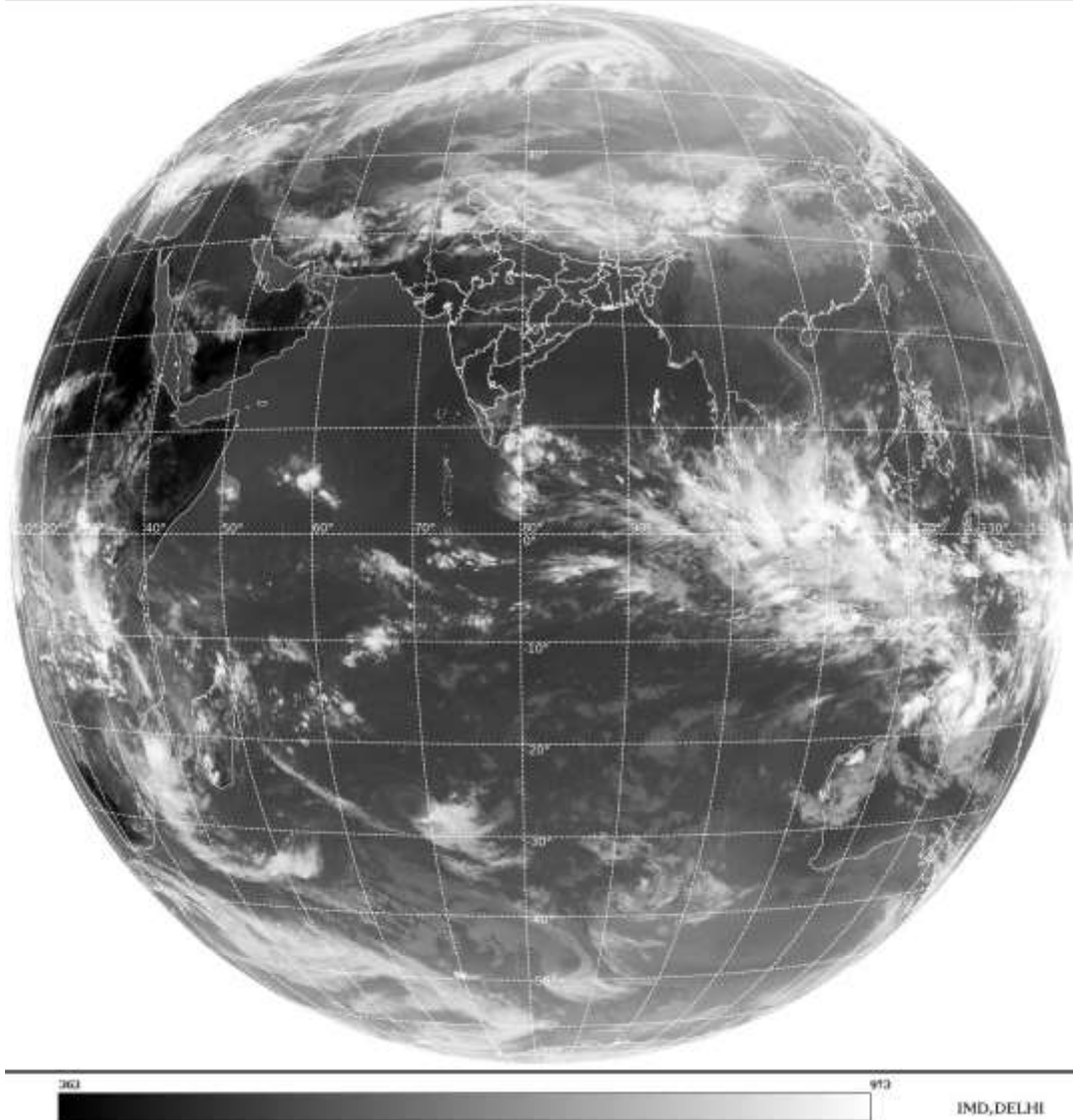
SCT LOW/MED CLOUDS WITH EMBDD MOD TO INT CONVTN OVER SOUTH BAY AND ANDAMAN SEA (.)



**CLOUDS DESCRIPTION OUTSIDE INDIA:-**

SAT : INSAT-3D IMG  
Thermal Infrared1 Count 10.8 um  
L1B FULL DISK

28-02-2023/(1200 to 1226) GMT  
28-02-2023/(1730 to 1756) IST



**SCT LOW/MED CLOUDS WITH EMBDD MOD TO INT CONVTN OVER SRI LANKA PALK STR GULF OF MANNAR PAK NEPAL BHUTAN TIBET CHINA YELLOW SEA E CHINA SEA EXT S THAILAND GULF OF THAILAND S CAMBODIA S VIETNAM SUMATRA STR OF MALACCA MALAYSIA BORNEO SOUTH CHINA SEA JAVA ILS & SEA CELEBES ILS & SEA PHILIPPINES SULU SEA MADAGASCAR MOZAMBIQUE CHANNEL AND OVER INDIAN OCEAN BET LAT 5.0N TO 30.0S LONG 40.0E TO 80.0E AND BET LAT 5.0N TO 12.0S LONG 80.0E TO 120.0E (.)**

**TOO 28/1830 HRS IST=**

**NNNN**

**LEGEND:-**

|               |              |  |
|---------------|--------------|--|
| <b>REGION</b> | <b>NORTH</b> | <b>J&amp;K HP PJB HARY DLH UP UTRKND</b>                         |
|               | <b>EAST</b>  | <b>BHR JHRKND CHTGH OR WB SKM<br/>NORTH- EAST STATES</b>         |
|               | <b>WEST</b>  | <b>RAJ MP GUJ MAHA GOA</b>                                       |
|               | <b>SOUTH</b> | <b>TLNGN AP KRNTK KER TN LKSDP<br/>ANDAMAN &amp; NICOBAR ILS</b> |

|  |                     |   |                   |
|--|---------------------|---|-------------------|
| <b>CLOUD DISTRIBUTION</b>  | <b>ISOL</b>         | <b>ISOLATED (LESS THAN 25%)</b>                             |                   |
|  | <b>SCT</b>          | <b>SCATTERED (25 TO 50%)</b>                                |                   |
|  | <b>BKN</b>          | <b>BROKEN (51 TO 75%)</b>                                   |                   |
|  | <b>SLD</b>          | <b>SOLID (GREATER THAN 75%)</b>                             |                   |
| <b>CLOUDS TOP TEMPERATURE</b>  | <b>CTT</b>          | <b>CLOUD TOP TEMPERATURE</b>                                |                   |
| <b>CONVECTION</b>  | <b>WK CONVTN</b>    | <b>WEAK CONVECTION<br/>(CTT GREATER THAN -25°C)</b>         |                   |
|  | <b>MOD CONVTN</b>   | <b>MODERATE CONVECTION<br/>(CTT BETWEEN -25°C TO -40°C)</b> |                   |
|  | <b>INT CONVTN</b>   | <b>INTENSE CONVECTION<br/>(CTT BETWEEN -41°C TO -70°C)</b>  |                   |
|  | <b>V INT CONVTN</b> | <b>VERY INTENSE CONVECTION<br/>(CTT LESS THAN -70°C)</b>    |                   |
| <b>METEOROLOGICAL SUB- DIVISIONS, STATES &amp; UNION TERRITORIES</b> | <b>ARUPR</b>        | <b>ARUNACHAL PRADESH</b>                                    |                   |
|  | <b>BHR</b>          | <b>BIHAR</b>  |                   |
|  | <b>CHTGH</b>        | <b>CHHATTISGARH</b>   |                   |
|  | <b>COTL AP</b>      | <b>COASTAL ANDHRA PRADESH</b>                               |                   |
|  | <b>COTL KRNTK</b>   | <b>COASTAL KARNATAKA</b>                                    |                   |
|  | <b>COTL ORS</b>     | <b>COASTAL ORISSA</b>                                       |                   |
|  | <b>GUJ</b>          | <b>GUJARAT</b>  |                   |
|  | <b>GWB</b>          | <b>GANGETIC WEST BENGAL</b>                                 |                   |
|  | <b>HARY</b>         | <b>HARYANA</b>  |                   |
|  | <b>DLH</b>          | <b>DELHI</b>  |                   |
|  | <b>HP</b>           | <b>HIMACHAL PRADESH</b>                                     |                   |
|  | <b>J&amp;K</b>      | <b>JAMMU AND KASHMIR</b>                                    |                   |
|  | <b>JHRKND</b>       | <b>JHARKHAND</b>  |                   |
|  | <b>KER</b>          | <b>KERALA</b>   |                   |
|  | <b>KKN</b>          | <b>KONKAN</b>   |                   |
|  | <b>LKSDP</b>        | <b>LAKSHADWEEP</b>  |                   |
|  | <b>M MAHA</b>       | <b>MADHYA MAHARASHTRA</b>                                   |                   |
|  | <b>MAHA</b>         | <b>MAHARASHTRA</b>  |                   |
|  | <b>MANI</b>         | <b>MANIPUR</b>  |                   |
|  | <b>MEGHA</b>        | <b>MEGHALAYA</b>  |                   |
|  | <b>MIZO</b>         | <b>MIZORAM</b>  |                   |
|  | <b>MP</b>           | <b>MADHYA PRADESH</b>                                       |                   |
|  |                     | <b>MRTHWD</b>   | <b>MARATHWADA</b> |
|  |                     | <b>NAGA</b>   | <b>NAGALAND</b>   |
| <b>N COTL AP</b>   |                     | <b>NORTH COASTAL ANDHRA PRADESH</b>                         |                   |
| <b>NIK</b>   |                     | <b>NORTH INTERIOR KARNATAKA</b>                             |                   |
| <b>ORS</b>   |                     | <b>ORISSA</b>   |                   |
| <b>PJB</b>   |                     | <b>PUNJAB</b>   |                   |
| <b>RAJ</b>   |                     | <b>RAJASTHAN</b>  |                   |
| <b>RYLSM</b>   |                     | <b>RAYALASEEMA</b>  |                   |
| <b>SAU &amp; KUTCH</b>   |                     | <b>SAURASHTRA &amp; KUTCH</b>                               |                   |
| <b>SHWB</b>  |                     | <b>SUB-HIMALAYAN WEST BENGAL</b>                            |                   |
| <b>SIK</b>   |                     | <b>SOUTH INTERIOR KARNATAKA</b>                             |                   |
| <b>SKM</b>   |                     | <b>SIKKIM</b>   |                   |

|                      |               |                                  |
|----------------------|---------------|----------------------------------|
|                      | <b>TLNGN</b>  | <b>TELANGANA</b>                 |
|                      | <b>TN</b>     | <b>TAMIL NADU</b>                |
|                      | <b>TRP</b>    | <b>TRIPURA</b>                   |
|                      | <b>UP</b>     | <b>UTTAR PRADESH</b>             |
|                      | <b>UTRKND</b> | <b>UTTARAKHAND</b>               |
|                      | <b>VID</b>    | <b>VIDHARBHA</b>                 |
|                      | <b>SHWB</b>   | <b>SUB HIMALAYAN WEST BENGAL</b> |
|                      | <b>GWB</b>    | <b>GANGETIC WEST BENGAL</b>      |
|                      | <b>ARSEA</b>  | <b>ARABIAN SEA</b>               |
|                      | <b>ILS</b>    | <b>ISLANDS</b>                   |
| <b>MISCELLANEOUS</b> | <b>ASSW</b>   | <b>IN ASSOCIATION WITH</b>       |
|                      | <b>ASSTD</b>  | <b>ASSOCIATED</b>                |
|                      | <b>LLC</b>    | <b>LOW LEVEL CIRCULATION</b>     |
|                      | <b>EMBDD</b>  | <b>EMBEDDED</b>                  |
|                      | <b>N/HOOD</b> | <b>NEIGHBOURHOOD</b>             |
|                      | <b>EXT</b>    | <b>EXTREME</b>                   |