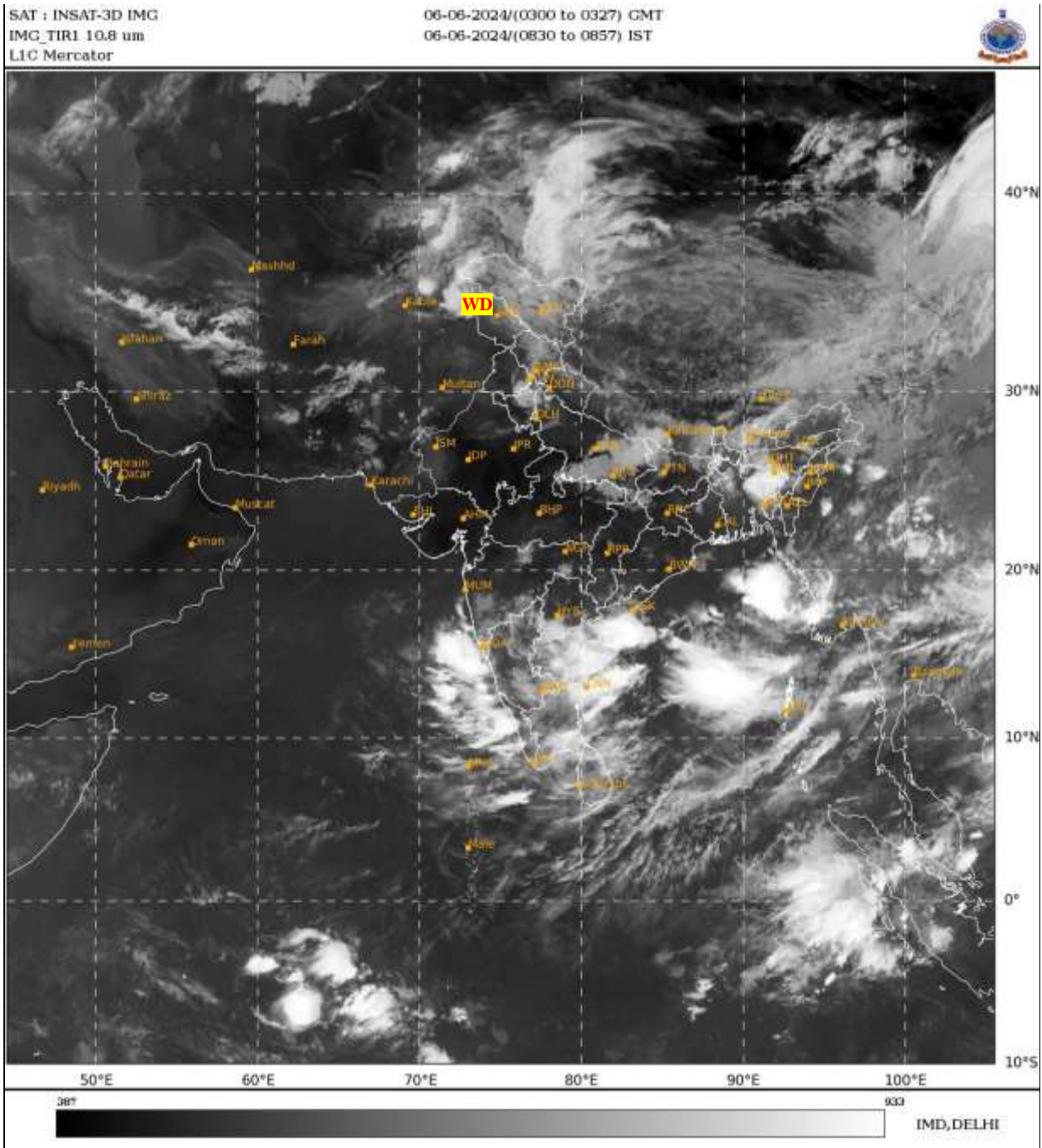




भारत मौसम विज्ञान विभाग  
पृथ्वी विज्ञान मंत्रालय  
India Meteorological Department  
Ministry of Earth Sciences



**SATELLITE BULLETIN BASED ON SATELLITE  
IMAGERIES AND PRODUCTS**  
**06.06.2024 TIME 0300 UTC**



TCIN50 DEMS 060300

SATELLITE BULLETIN BASED ON INSAT-3D PIC OF 060300 UTC (.)

REGION COVERED BETWEEN LAT 50.0°N TO 35.0°S AND LONG 30.0°E TO 125.0°E (.)

**SALIENT FEATURES:-**

**WESTERN DISTURBANCE:-**

SCT MULTILAYERED CLOUDS OVER PAK LADAKH J&K HP UTRKND PJB HARY UP E NEPAL  
IN ASSW **WD** OVER THE AREA (.)

**CONVECTIVE / THUNDERSTORM ACTIVITY:-**

MODERATE TO INTENSE CONVECTIVE / THUNDERSTORM ACTIVITY OBSERVED OVER  
MEGHA S TLNGN RYLSM S COTL AP E TN COTL KER (MINIMUM **CTT MINUS 60-70 DEG CEL**)  
(.)



INSAT-3D 06-JUN-2024 03:00 WV IMG

WATER VAPOUR WIND

( 1Kt = 0.5 m/s )

10 Kt

15 Kt

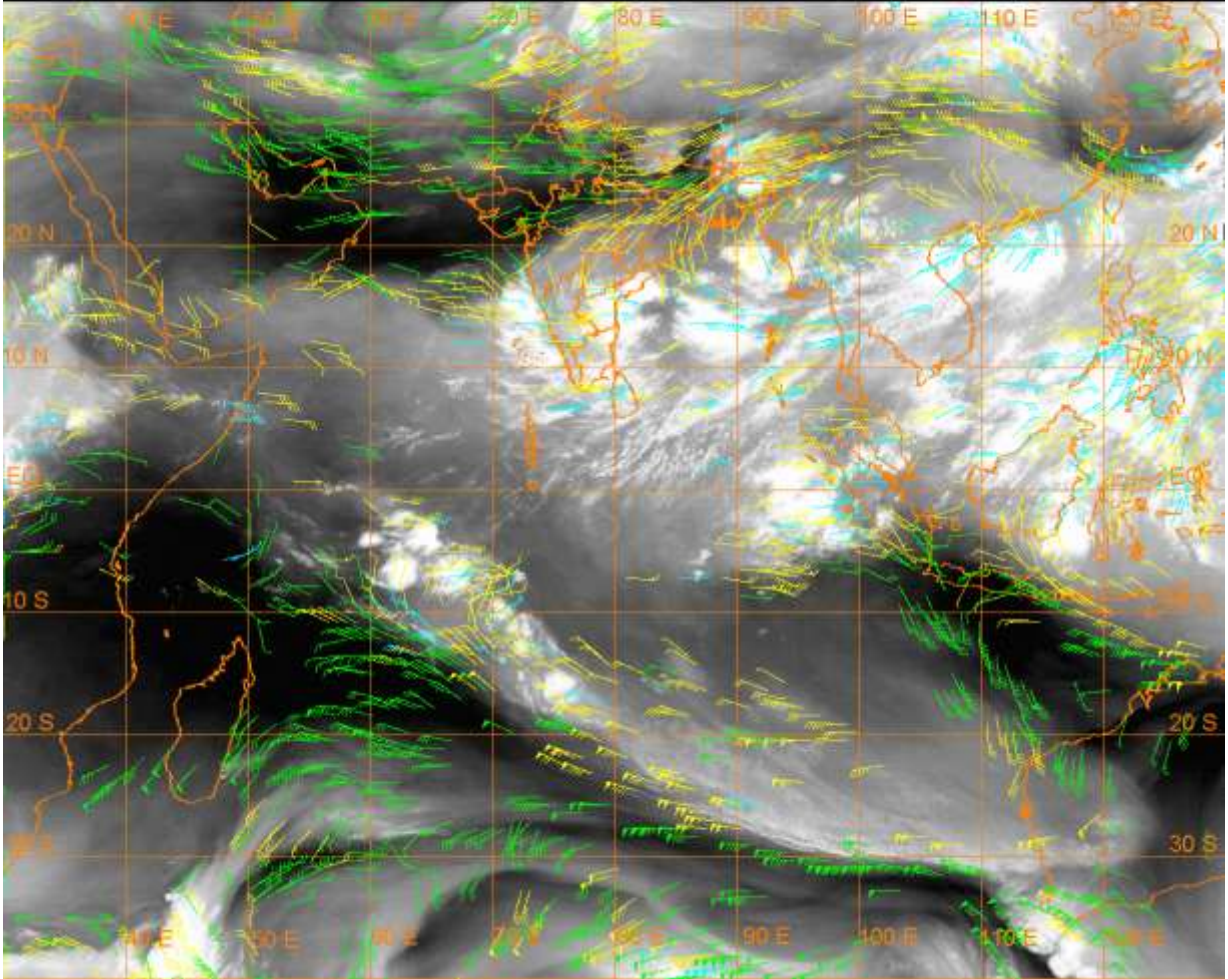
20 Kt

50 Kt

100-250 hPa

251-350 hPa

351-500 hPa



### **CLOUDS DESCRIPTION WITHIN INDIA:-**

#### **NORTH:-**

SCT BKN LOW/MED CLOUDS WITH EMBDD WK TO MOD CONVTN OVER LADAKH HP N UTRKND EXT E PJB N HARY NW & E UP (.) SCT LOW/MED CLOUDS OVER J&K S HARY DLH SW UP (.)

#### **EAST:-**

SCT LOW/MED CLOUDS WITH EMBDD MOD TO INT CONVTN OVER MEGHA & NORTH BD (.) SCT LOW/MED CLOUDS WITH EMBDD WK TO MOD CONVTN OVER N BHR NW JHRKND NW GWB SHWB ARUPR ASSAM NAGA (.) SCT LOW/MED CLOUDS OVER S BHR CHTGH REST JHRKND ORS REST NE STATES (.)

#### **WEST:-**

SCT LOW/MED CLOUDS WITH EMBDD WK TO MOD CONVTN OVER NE MP W VID S MRTHWD SOUTH MADHYA MAHA S KKN & GOA (.) SCT LOW/MED CLOUDS OVER N RAJ REST MP REST MAHA (.)

#### **SOUTH:-**

SCT TO BKN LOW/MED CLOUDS WITH EMBDD MOD TO INT CONVTN OVER S TLNGN RYLSM S COTL AP E COTL TN COTL KER LKSDP ILS (.) SCT LOW/MED CLOUDS WITH EMBDD WK TO MOD CONVTN OVER KRNTK REST KER W TN N COTL AP ANDAMAN & NICOBAR ILS (.)

#### **ARABIAN SEA:-**

SCT LOW/MED CLOUDS WITH EMBDD INT TO V INT CONVTN OVER EC & SE ARSEA OFF GOA-KRNTK-KER COASTS & LKSDP ILS AREA (.) SCT LOW/MED CLOUDS WITH EMBDD ISOL MOD TO INT CONVTN OVER COMORIN AREA (.)

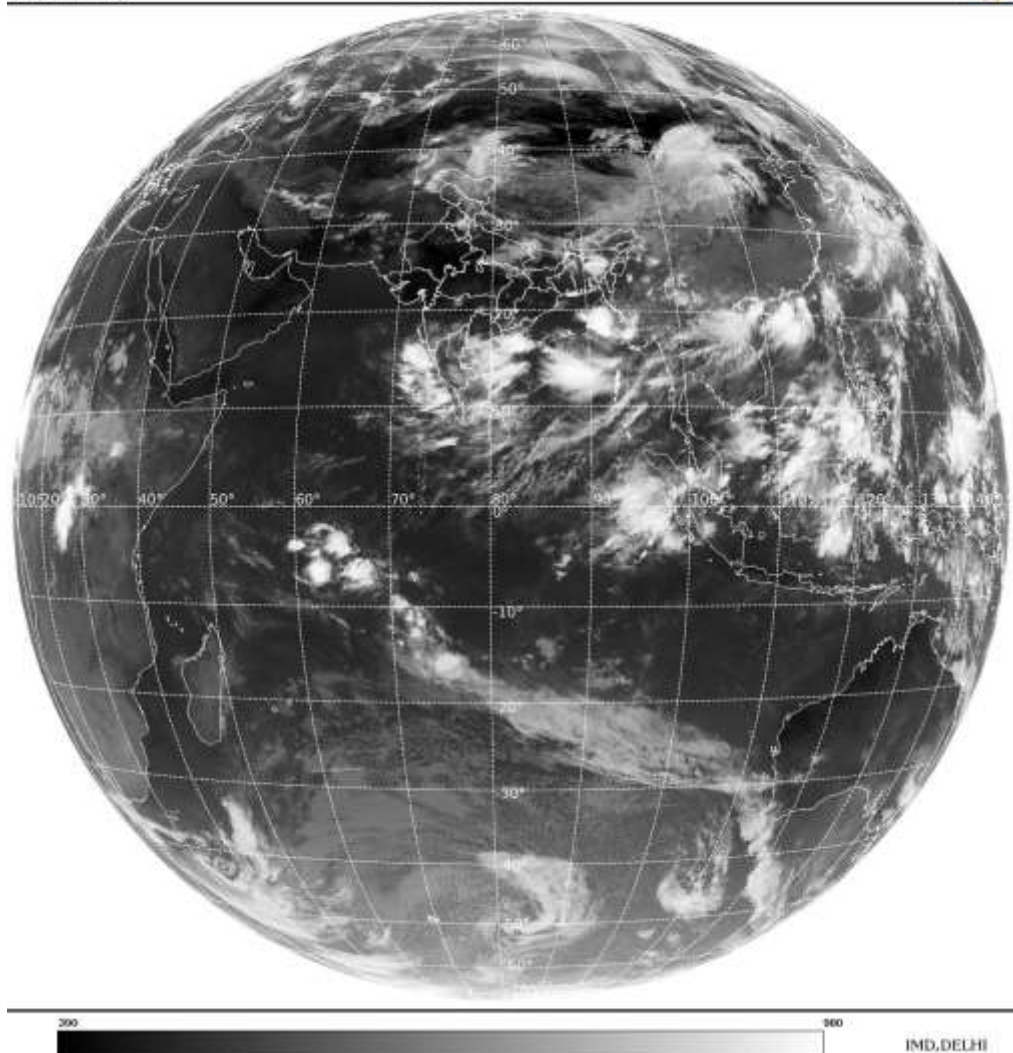
#### **BAY OF BENGAL & ANDAMAN SEA:-**

SCT LOW/MED CLOUDS WITH EMBDD INT TO V INT CONVTN OVER CENTRAL & NE BAY ARAKAN COAST (MINIMUM **CTT MINUS 93 DEG CEL**) (.) SCT LOW/MED CLOUDS WITH EMBDD MOD TO INT CONVTN OVER S BAY ANDAMAN SEA (.)

**CLOUDS DESCRIPTION OUTSIDE INDIA:-**

SAT : INSAT-3D IMG  
Thermal Infrared1 Count 10.8 um  
LIB FULL DISK

06-06-2024/(0300 to 0327) GMT  
06-06-2024/(0830 to 0857) IST



**SCT LOW/MED CLOUDS WITH EMBDD MOD TO INT CONVTN OVER SRI LANKA PALK STR GULF OF MANNAR N PAK NEPAL BHUTAN TIBET CHINA MYANMAR THAILAND GULF OF THAILAND CAMBODIA LAOS VIETNAM GULF OF TONKIN HAINAN TAIWAN EAST CHINA SUMATRA STR OF MALACCA MALAYSIA BORNEO SOUTH CHINA SEA CELEBES ILS & SEA PHILIPPINES SEA AND OVER INDIAN OCEAN BET LAT 5.0N TO 10.0S LONG 60.0E TO 100.0E AND BET LAT 10.0S TO 30.0S LONG 70.0E TO 110.0E (.)**

**TOO 06/0940 HRS IST=**

**NNNN**

**LEGEND:-**

|                           |              |  |
|---------------------------|--------------|--|
| <b>REGION</b>             | <b>NORTH</b> | <b>J&amp;K HP PJB HARY DLH UP UTRKND</b>                     |
|                           | <b>EAST</b>  | <b>BHR JHRKND CHTGH ORS WB SKM NORTH- EAST STATES</b>        |
|                           | <b>WEST</b>  | <b>RAJ MP GUJ MAHA GOA</b>                                   |
|                           | <b>SOUTH</b> | <b>TLNGN AP KRNTK KER TN LKSDP ANDAMAN &amp; NICOBAR ILS</b> |
| <b>CLOUD DISTRIBUTION</b> | <b>ISOL</b>  | <b>ISOLATED (LESS THAN 25%)</b>                              |
|                           | <b>SCT</b>   | <b>SCATTERED (25 TO 50%)</b>                                 |
|                           | <b>BKN</b>   | <b>BROKEN (51 TO 75%)</b>                                    |
|                           | <b>SLD</b>   | <b>SOLID (GREATER THAN 75%)</b>                              |

| <b>CLOUDS TOP TEMPERATURE</b>  | <b>CTT</b>                       | <b>CLOUD TOP TEMPERATURE</b>                                |
|--|----------------------------------|---|
| <b>CONVECTION</b>  | <b>WK CONV TN</b>                | <b>WEAK CONVECTION<br/>(CTT GREATER THAN -25°C)</b>         |
|  | <b>MOD CONV TN</b>               | <b>MODERATE CONVECTION<br/>(CTT BETWEEN -25°C TO -40°C)</b> |
|  | <b>INT CONV TN</b>               | <b>INTENSE CONVECTION<br/>(CTT BETWEEN -41°C TO -70°C)</b>  |
|  | <b>V INT CONV TN</b>             | <b>VERY INTENSE CONVECTION<br/>(CTT LESS THAN -70°C)</b>    |
| <b>METEOROLOGICAL SUB- DIVISIONS, STATES &amp; UNION TERRITORIES</b> | <b>ARUPR</b>                     | <b>ARUNACHAL PRADESH</b>                                    |
|  | <b>BHR</b>                       | <b>BIHAR</b>  |
|  | <b>CHTGH</b>                     | <b>CHHATTISGARH</b>   |
|  | <b>COTL AP</b>                   | <b>COASTAL ANDHRA PRADESH</b>                               |
|  | <b>COTL KRNTK</b>                | <b>COASTAL KARNATAKA</b>                                    |
|  | <b>COTL ORS</b>                  | <b>COASTAL ORISSA</b>                                       |
|  | <b>GUJ</b>                       | <b>GUJARAT</b>  |
|  | <b>GWB</b>                       | <b>GANGETIC WEST BENGAL</b>                                 |
|  | <b>HARY</b>                      | <b>HARYANA</b>  |
|  | <b>DLH</b>                       | <b>DELHI</b>  |
|  | <b>HP</b>                        | <b>HIMACHAL PRADESH</b>                                     |
|  | <b>J&amp;K</b>                   | <b>JAMMU AND KASHMIR</b>                                    |
|  | <b>JHRKND</b>                    | <b>JHARKHAND</b>  |
|  | <b>KER</b>                       | <b>KERALA</b>   |
|  | <b>KKN</b>                       | <b>KONKAN</b>   |
|  | <b>LKSDP</b>                     | <b>LAKSHADWEEP</b>  |
|  | <b>M MAHA</b>                    | <b>MADHYA MAHARASHTRA</b>                                   |
|  | <b>MAHA</b>                      | <b>MAHARASHTRA</b>  |
|  | <b>MANI</b>                      | <b>MANIPUR</b>  |
|  | <b>MEGHA</b>                     | <b>MEGHALAYA</b>  |
|  | <b>MIZO</b>                      | <b>MIZORAM</b>  |
|  | <b>MP</b>                        | <b>MADHYA PRADESH</b>                                       |
|  | <b>MRTHWD</b>                    | <b>MARATHWADA</b>   |
|  | <b>NAGA</b>                      | <b>NAGALAND</b>   |
|  | <b>N COTL AP</b>                 | <b>NORTH COASTAL ANDHRA PRADESH</b>                         |
|  | <b>NIK</b>                       | <b>NORTH INTERIOR KARNATAKA</b>                             |
|  | <b>ORS</b>                       | <b>ORISSA</b>   |
|  | <b>PJB</b>                       | <b>PUNJAB</b>   |
| <b>RAJ</b>   | <b>RAJASTHAN</b>                 |   |
| <b>RYLSM</b>   | <b>RAYALASEEMA</b>               |   |
| <b>SAU &amp; KUTCH</b>   | <b>SAURASHTRA &amp; KUTCH</b>    |   |
| <b>SHWB</b>  | <b>SUB-HIMALAYAN WEST BENGAL</b> |   |
| <b>SIK</b>   | <b>SOUTH INTERIOR KARNATAKA</b>  |   |
| <b>SKM</b>   | <b>SIKKIM</b>                    |   |
| <b>TLNGN</b>   | <b>TELANGANA</b>                 |   |
| <b>TN</b>  | <b>TAMIL NADU</b>                |   |
| <b>TRP</b>   | <b>TRIPURA</b>                   |   |
| <b>UP</b>  | <b>UTTAR PRADESH</b>             |   |

|                      |               |                                  |
|----------------------|---------------|----------------------------------|
|                      | <b>UTRKND</b> | <b>UTTARAKHAND</b>               |
|                      | <b>VID</b>    | <b>VIDHARBHA</b>                 |
|                      | <b>SHWB</b>   | <b>SUB HIMALAYAN WEST BENGAL</b> |
|                      | <b>GWB</b>    | <b>GANGETIC WEST BENGAL</b>      |
|                      | <b>ARSEA</b>  | <b>ARABIAN SEA</b>               |
|                      | <b>ILS</b>    | <b>ISLANDS</b>                   |
| <b>MISCELLANEOUS</b> | <b>ASSW</b>   | <b>IN ASSOCIATION WITH</b>       |
|                      | <b>ASSTD</b>  | <b>ASSOCIATED</b>                |
|                      | <b>LLC</b>    | <b>LOW LEVEL CIRCULATION</b>     |
|                      | <b>EMBDD</b>  | <b>EMBEDDED</b>                  |
|                      | <b>N/HOOD</b> | <b>NEIGHBOURHOOD</b>             |
|                      | <b>EXT</b>    | <b>EXTREME</b>                   |