



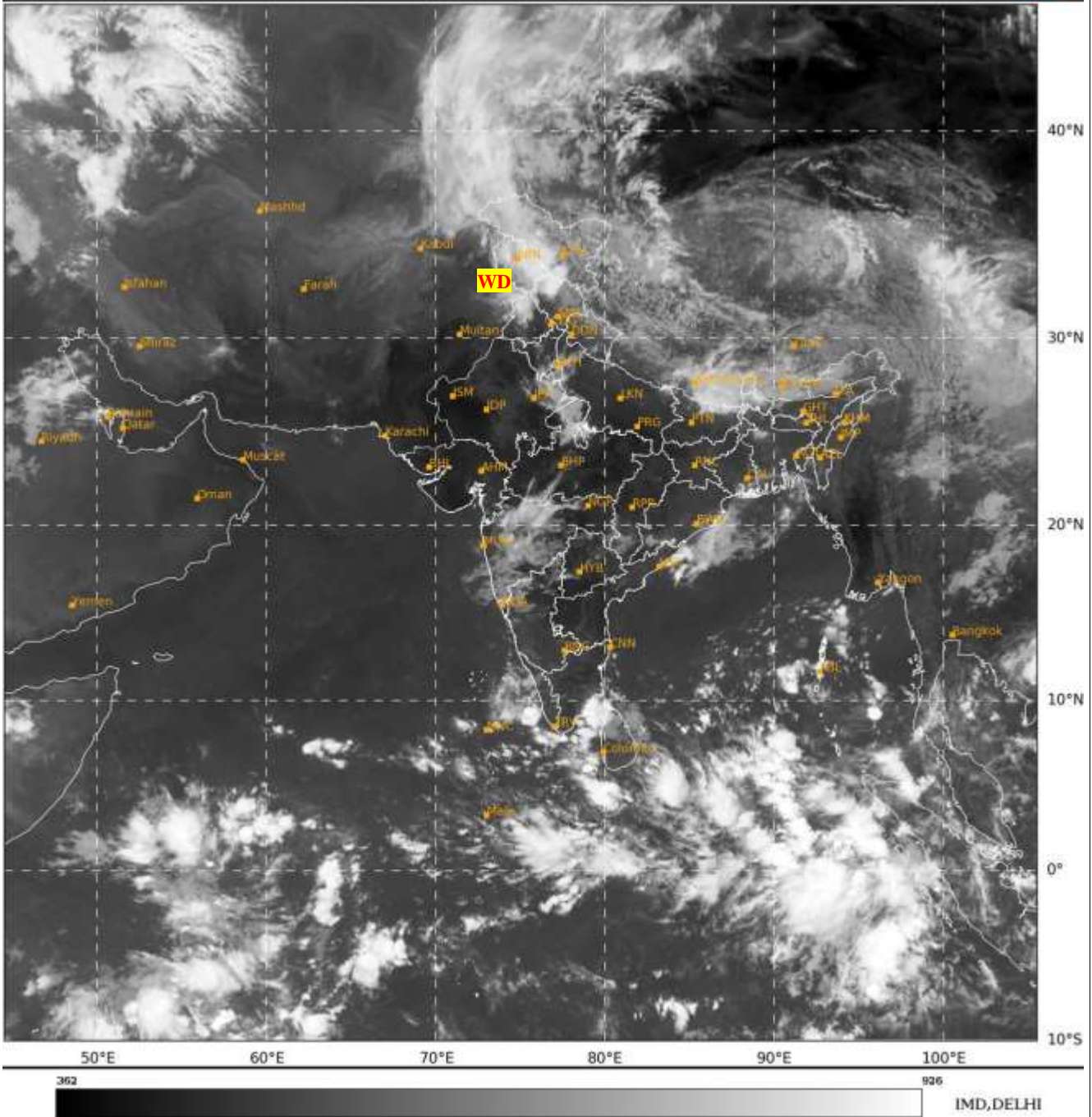
भारत मौसम विज्ञान विभाग  
पृथ्वी विज्ञान मंत्रालय  
India Meteorological Department  
Ministry of Earth Sciences



**SATELLITE BULLETIN BASED ON SATELLITE  
IMAGERIES AND PRODUCTS**  
**12.05.2024 TIME 0300 UTC**

SAT : INSAT-3D IMG  
IMG\_TIR1 10.8 um  
LIC Mercator

12-05-2024/(0300 to 0326) GMT  
12-05-2024/(0830 to 0856) IST



TCIN50 DEMS 120300

SATELLITE BULLETIN BASED ON INSAT-3D PIC OF 120300 UTC (.)

REGION COVERED BETWEEN LAT 50.0°N TO 35.0°S AND LONG 30.0°E TO 125.0°E (.)

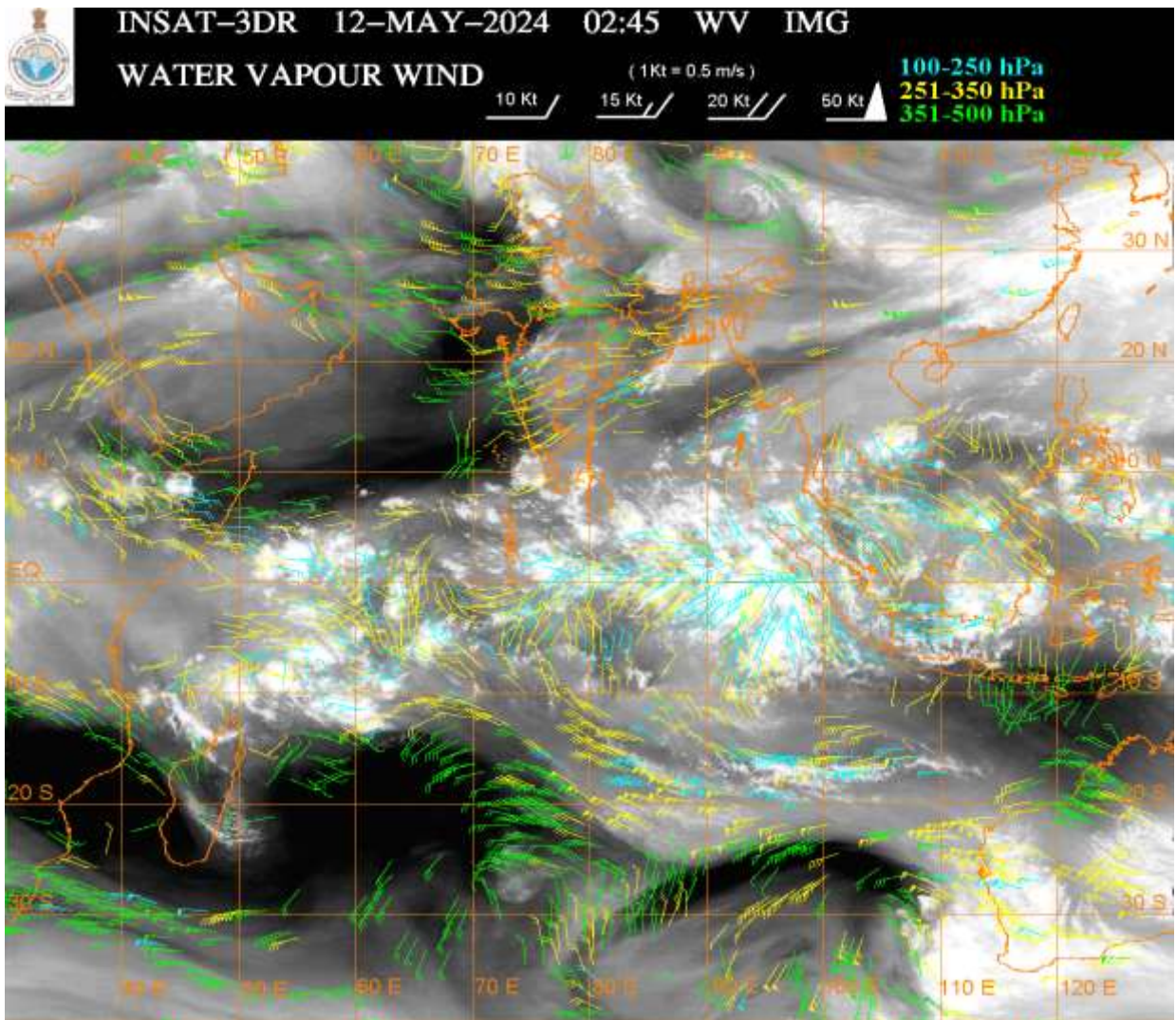
**SALIENT FEATURES:-**

**WESTERN DISTURBANCE:-**

SCT MULTILAYERED CLOUDS OVER N PAK LADAKH J&K HP UTRKND PJB HARY DLH NE RAJ  
ADJ NW MP W UP IN ASSW **WD** OVER THE AREA (.)

**CONVECTIVE / THUNDERSTORM ACTIVITY:-**

MODERATE TO INTENSE CONVECTIVE / THUNDERSTORM ACTIVITY OBSERVED OVER J&K  
NORTH HP N PJB (MINIMUM **CTT MINUS 50-60 DEG CEL**) N BHR ADJ W NEPAL SKM ADJ SHWB  
(MINIMUM **CTT MINUS 40-50 DEG CEL**) W VID MADHYA MAHA (MINIMUM **CTT MINUS 30-40  
DEG CEL**) & S COTL TN (MINIMUM **CTT MINUS 60-70 DEG CEL**) (.)



**CLOUDS DESCRIPTION WITHIN INDIA:-**

**NORTH:-**

SCT LOW/MED CLOUDS WITH EMBDD MOD TO INT CONVTN OVER LADAKH J&K N HP N PJB AND ISOL WK TO MOD CONVTN OVER UTRKND S HARY W UP & EXT NE UP (.) SCT LOW/MED CLOUDS OVER S HP S PJB N HARY DLH (.)

**EAST:-**

SCT LOW/MED CLOUDS WITH EMBDD MOD TO INT CONVTN OVER S ORS & COTL ORS N BHR NORTH SHWB SKM W ARUPR AND ISOL WK TO MOD CONVTN OVER S CHTGH N ASSAM E ARUPR & BD (.) SCT LOW/MED CLOUDS OVER S BHR E JHRKND GWB SOUTH SHWB REST NE STATES (.)

**WEST:-**

SCT LOW/MED CLOUDS WITH EMBDD ISOL MOD TO INT CONVTN OVER W VID NORTH MADHYA MAHA AND ISOL WK TO MOD CONVTN OVER NE RAJ W MP REST MAHA (.) SCT LOW/MED CLOUDS OVER E MP GUJ & GOA (.)

**SOUTH:-**

SCT LOW/MED CLOUDS WITH EMBDD MOD TO INT CONVTN OVER S COTL TN LKSDP ILS AREA & ANDAMAN ILS (.) SCT LOW/MED CLOUDS WITH EMBDD ISOL WK CONVTN OVER NIK & NICOBAR ILS (.) SCT LOW/MED CLOUDS OVER REST KRNTK TLNGN RYLSM COTL AP KER REST TN (.)

**ARABIAN SEA:-**

SCT LOW/MED CLOUDS WITH EMBDD INT TO V INT CONVTN OVER SE ARSEA SOUTH OF LAT 10.0N COMORIN AREA & GULF OF MANNAR (.)

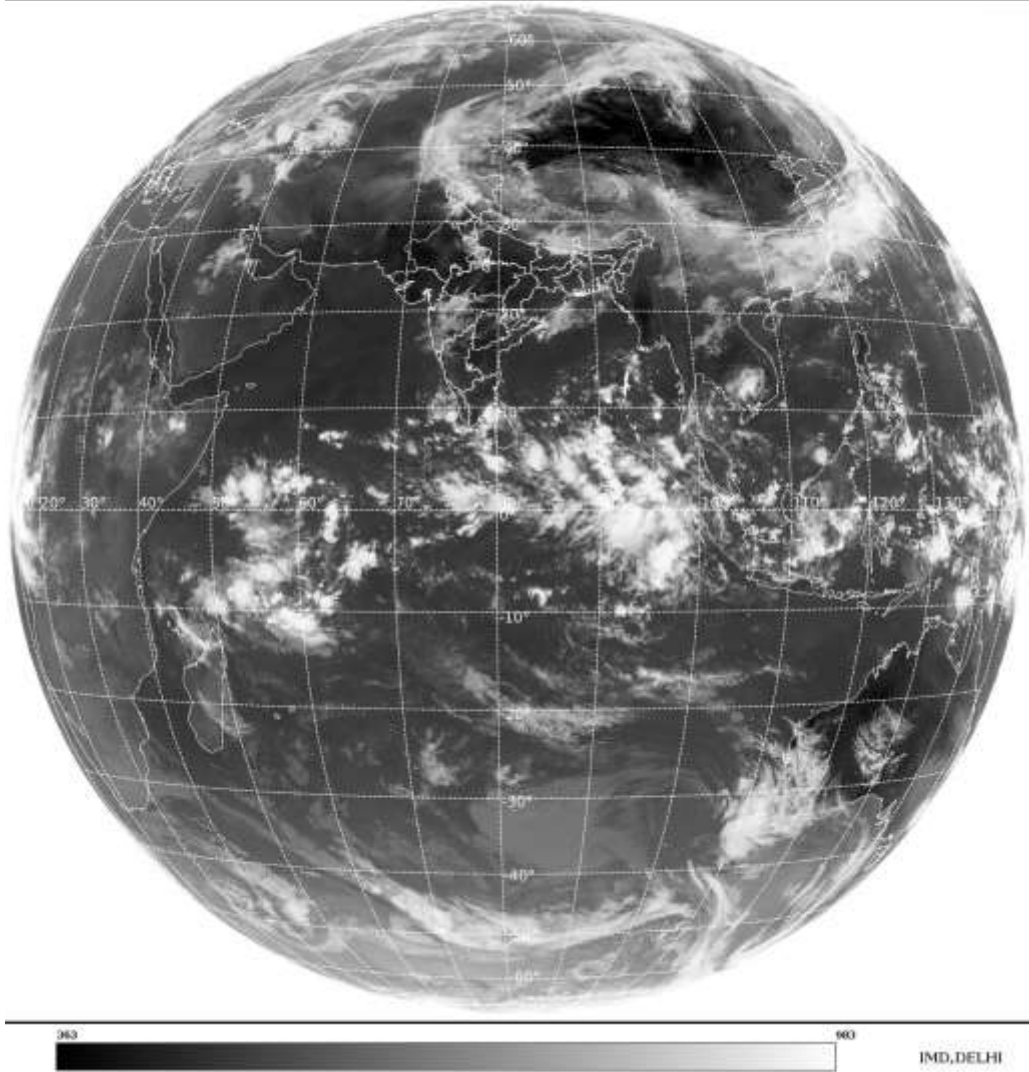
**BAY OF BENGAL & ANDAMAN SEA:-**

SCT TO BKN LOW/MED CLOUDS WITH EMBDD INT TO V INT CONVTN OVER S BAY ADJ EQUATORIAL INDIAN OCEAN & ANDAMAN SEA (.) SCT LOW/MED CLOUDS WITH EMBDD ISOL MOD TO INT CONVTN OVER NW BAY AND ISOL WK TO MOD CONVTN OVER NE & EC BAY (.)

**CLOUDS DESCRIPTION OUTSIDE INDIA:-**

SAT : INSAT-3D IMG  
Thermal Infrared1 Count 10.8 um  
LIB FULL DISK

12-05-2024/(0300 to 0326) GMT  
12-05-2024/(0630 to 0656) IST



**SCT LOW/MED CLOUDS WITH EMBDD MOD TO INT CONV TN OVER N SRI LANKA PALK STR GULF OF MANNAR MALDIVES NE PAK NEPAL BHUTAN TIBET CHINA GULF OF THAILAND CAMBODIA SUMATRA STR OF MALACCA MALAYSIA BORNEO SOUTH CHINA SEA JAVA ILS & SEA CELEBES ILS PHILIPPINES TAIWAN EAST CHINA SEA SOUTH YELLOW SEA AND OVER INDIAN OCEAN BET LAT 5.0N TO 13.0S LONG 40.0E TO 100.0E AND BET LAT 15.0S TO 35.0S LONG 80.0E TO 115.0E (.)**

**TOO 12/0930 HRS IST=**

**NNNN**

**LEGEND:-**

<b>REGION</b>	<b>NORTH</b>	<b>J&amp;K HP PJB HARY DLH UP UTRKND</b>
	<b>EAST</b>	<b>BHR JHRKND CHTGH ORS WB SKM NORTH- EAST STATES</b>
	<b>WEST</b>	<b>RAJ MP GUJ MAHA GOA</b>
	<b>SOUTH</b>	<b>TLNGN AP KRNTK KER TN LKSDP ANDAMAN &amp; NICOBAR ILS</b>
<b>CLOUD DISTRIBUTION</b>	<b>ISOL</b>	<b>ISOLATED (LESS THAN 25%)</b>
	<b>SCT</b>	<b>SCATTERED (25 TO 50%)</b>
	<b>BKN</b>	<b>BROKEN (51 TO 75%)</b>
	<b>SLD</b>	<b>SOLID (GREATER THAN 75%)</b>

<b>CLOUDS TOP TEMPERATURE</b>	<b>CTT</b>	<b>CLOUD TOP TEMPERATURE</b>
<b>CONVECTION</b>	<b>WK CONV TN</b>	<b>WEAK CONVECTION (CTT GREATER THAN -25°C)</b>
	<b>MOD CONV TN</b>	<b>MODERATE CONVECTION (CTT BETWEEN -25°C TO -40°C)</b>
	<b>INT CONV TN</b>	<b>INTENSE CONVECTION (CTT BETWEEN -41°C TO -70°C)</b>
	<b>V INT CONV TN</b>	<b>VERY INTENSE CONVECTION (CTT LESS THAN -70°C)</b>
<b>METEOROLOGICAL SUB- DIVISIONS, STATES &amp; UNION TERRITORIES</b>	<b>ARUPR</b>	<b>ARUNACHAL PRADESH</b>
	<b>BHR</b>	<b>BIHAR</b>
	<b>CHTGH</b>	<b>CHHATTISGARH</b>
	<b>COTL AP</b>	<b>COASTAL ANDHRA PRADESH</b>
	<b>COTL KRNTK</b>	<b>COASTAL KARNATAKA</b>
	<b>COTL ORS</b>	<b>COASTAL ORISSA</b>
	<b>GUJ</b>	<b>GUJARAT</b>
	<b>GWB</b>	<b>GANGETIC WEST BENGAL</b>
	<b>HARY</b>	<b>HARYANA</b>
	<b>DLH</b>	<b>DELHI</b>
	<b>HP</b>	<b>HIMACHAL PRADESH</b>
	<b>J&amp;K</b>	<b>JAMMU AND KASHMIR</b>
	<b>JHRKND</b>	<b>JHARKHAND</b>
	<b>KER</b>	<b>KERALA</b>
	<b>KKN</b>	<b>KONKAN</b>
	<b>LKSDP</b>	<b>LAKSHADWEEP</b>
	<b>M MAHA</b>	<b>MADHYA MAHARASHTRA</b>
	<b>MAHA</b>	<b>MAHARASHTRA</b>
	<b>MANI</b>	<b>MANIPUR</b>
	<b>MEGHA</b>	<b>MEGHALAYA</b>
	<b>MIZO</b>	<b>MIZORAM</b>
	<b>MP</b>	<b>MADHYA PRADESH</b>
	<b>MRTHWD</b>	<b>MARATHWADA</b>
	<b>NAGA</b>	<b>NAGALAND</b>
	<b>N COTL AP</b>	<b>NORTH COASTAL ANDHRA PRADESH</b>
	<b>NIK</b>	<b>NORTH INTERIOR KARNATAKA</b>
	<b>ORS</b>	<b>ORISSA</b>
	<b>PJB</b>	<b>PUNJAB</b>
	<b>RAJ</b>	<b>RAJASTHAN</b>
<b>RYLSM</b>	<b>RAYALASEEMA</b>	
<b>SAU &amp; KUTCH</b>	<b>SAURASHTRA &amp; KUTCH</b>	
<b>SHWB</b>	<b>SUB-HIMALAYAN WEST BENGAL</b>	
<b>SIK</b>	<b>SOUTH INTERIOR KARNATAKA</b>	
<b>SKM</b>	<b>SIKKIM</b>	
<b>TLNGN</b>	<b>TELANGANA</b>	
<b>TN</b>	<b>TAMIL NADU</b>	
<b>TRP</b>	<b>TRIPURA</b>	
<b>UP</b>	<b>UTTAR PRADESH</b>	

	<b>UTRKND</b>	<b>UTTARAKHAND</b>
	<b>VID</b>	<b>VIDHARBHA</b>
	<b>SHWB</b>	<b>SUB HIMALAYAN WEST BENGAL</b>
	<b>GWB</b>	<b>GANGETIC WEST BENGAL</b>
	<b>ARSEA</b>	<b>ARABIAN SEA</b>
	<b>ILS</b>	<b>ISLANDS</b>
<b>MISCELLANEOUS</b>	<b>ASSW</b>	<b>IN ASSOCIATION WITH</b>
	<b>ASSTD</b>	<b>ASSOCIATED</b>
	<b>LLC</b>	<b>LOW LEVEL CIRCULATION</b>
	<b>EMBDD</b>	<b>EMBEDDED</b>
	<b>N/HOOD</b>	<b>NEIGHBOURHOOD</b>
	<b>EXT</b>	<b>EXTREME</b>