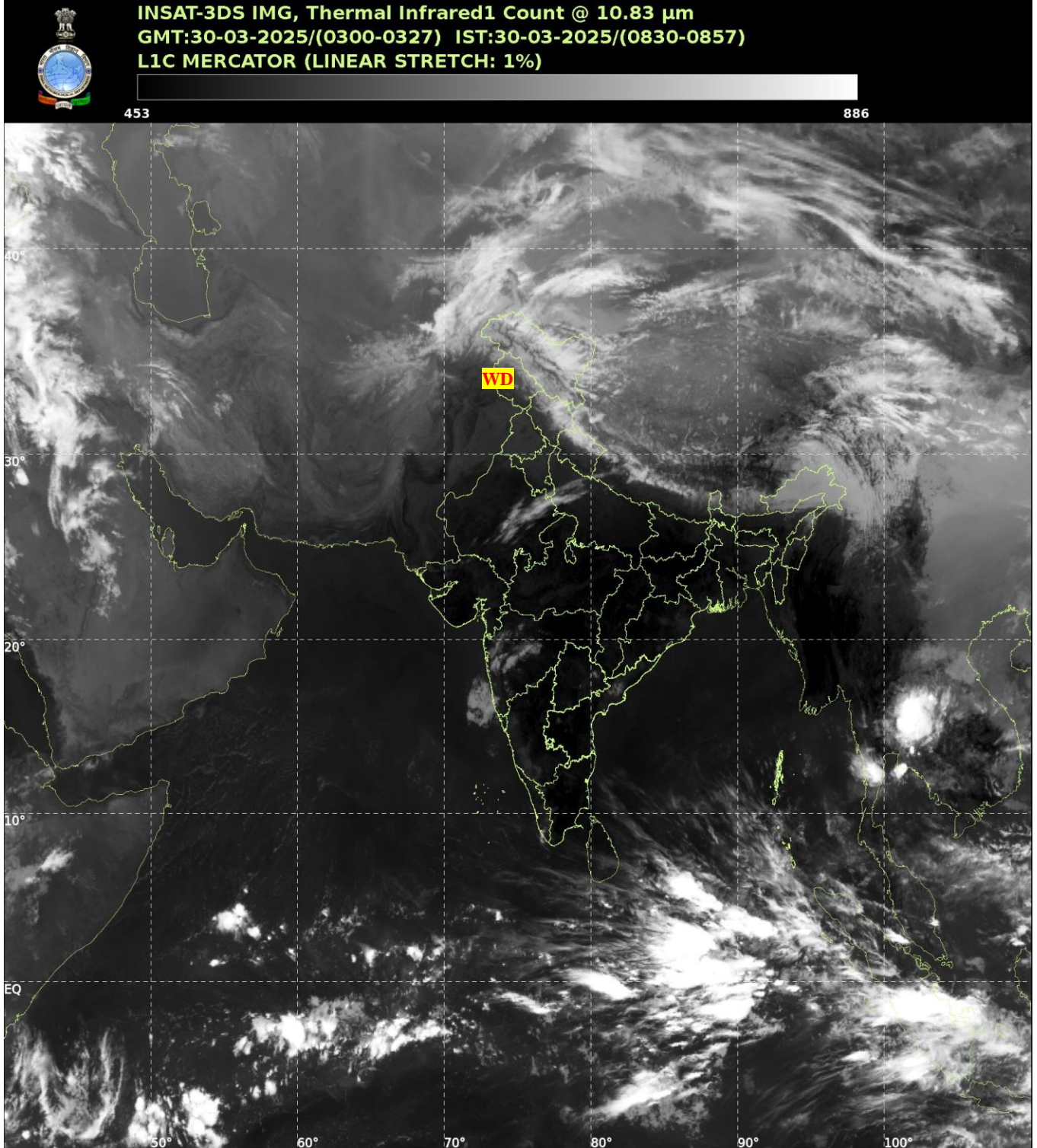




भारत मौसम विज्ञान विभाग
पृथ्वी विज्ञान मंत्रालय
India Meteorological Department
Ministry of Earth Sciences



**SATELLITE BULLETIN BASED ON SATELLITE
IMAGERIES AND PRODUCTS**
30.03.2025 TIME 0300 UTC



TCIN50 DEMS 300300

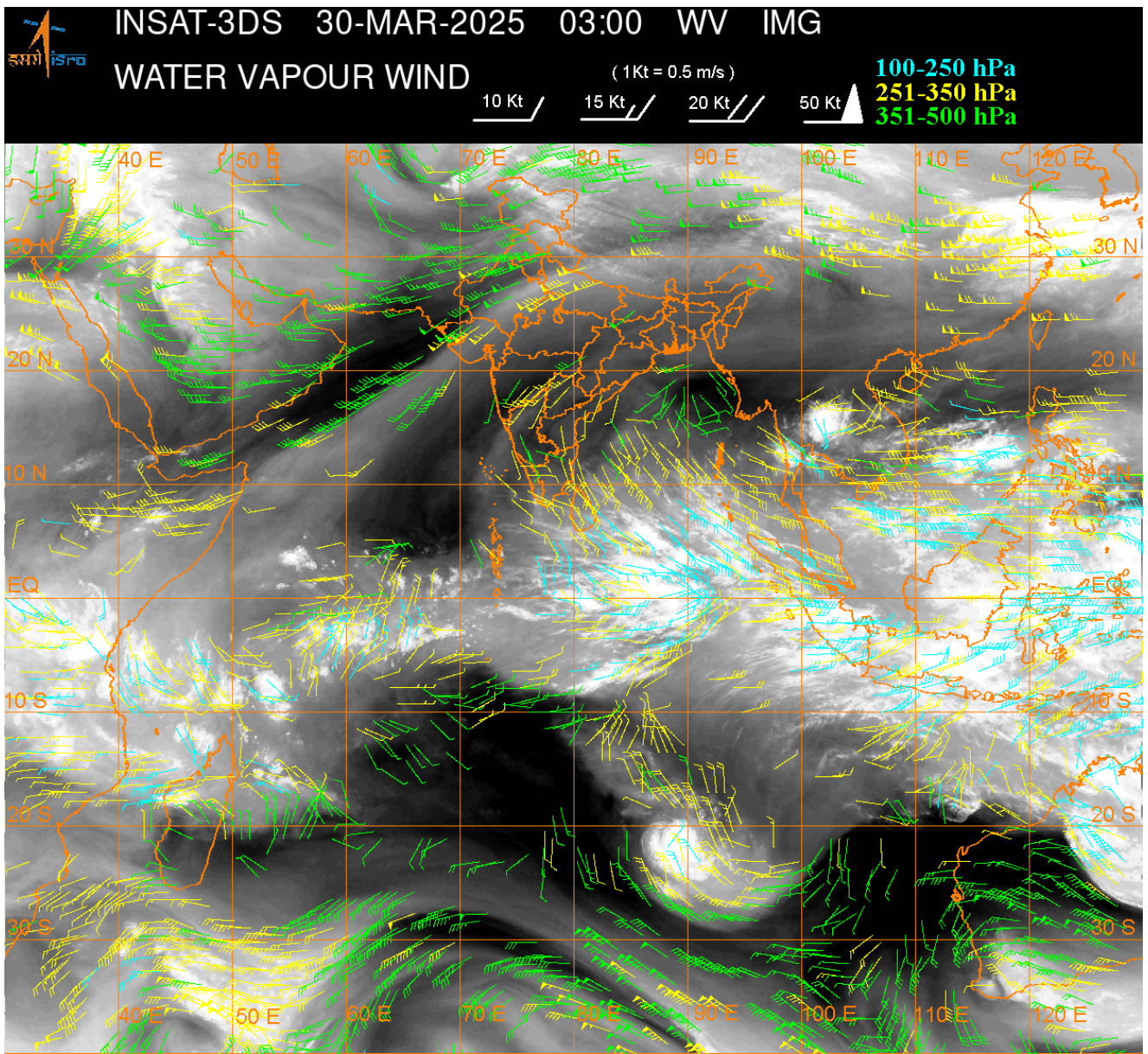
SATELLITE BULLETIN BASED ON INSAT-3DS PIC OF 300300 UTC (.)

REGION COVERED BETWEEN LAT 50.0°N TO 35.0°S AND LONG 40.0°E TO 125.0°E (.)

SALIENT FEATURES:-

WESTERN DISTURBANCE:-

SCT MULTILAYERED CLOUDS OVER EXTREME NORTH PAK J&K LADAKH HP UTRKND & N/HOOD IN ASSW **WD** OVER THE AREA (.)



CLOUDS DESCRIPTION WITHIN INDIA:-

NORTH:-

SCT LOW/MED CLOUDS WITH EMBDD ISOL WK TO MOD CONVTN OVER LADAKH N HP N UTRKND SW UP (.)SCT LOW/MED CLOUDS OVER J&K S HP S UTRKND (.)

EAST:-

SCT LOW/MED CLOUDS WITH EMBDD ISOL WK CONVTN OVER SKM ARUPR NE ASSAM (.) ISOL TO SCT LOW/MED CLOUDS OVER REST NE STATES (.)

WEST:-

SCT LOW/MED CLOUDS WITH EMBDD ISOL WK TO MOD CONVTN OVER E RAJ MADHYA MAHA KKN (.) ISOL LOW/MED CLOUDS OVER GUJ REST MAHA & GOA (.)

SOUTH:-

SCT LOW/MED CLOUDS WITH EMBDD ISOL WK CONVTN OVER EXT S KER ANDAMAN & NICOBAR ILS AREA (.) ISOL TO SCT LOW/MED CLOUDS OVER S TLNGN N RYLSM N COTL AP REST KER TN LKSDP ILS (.)

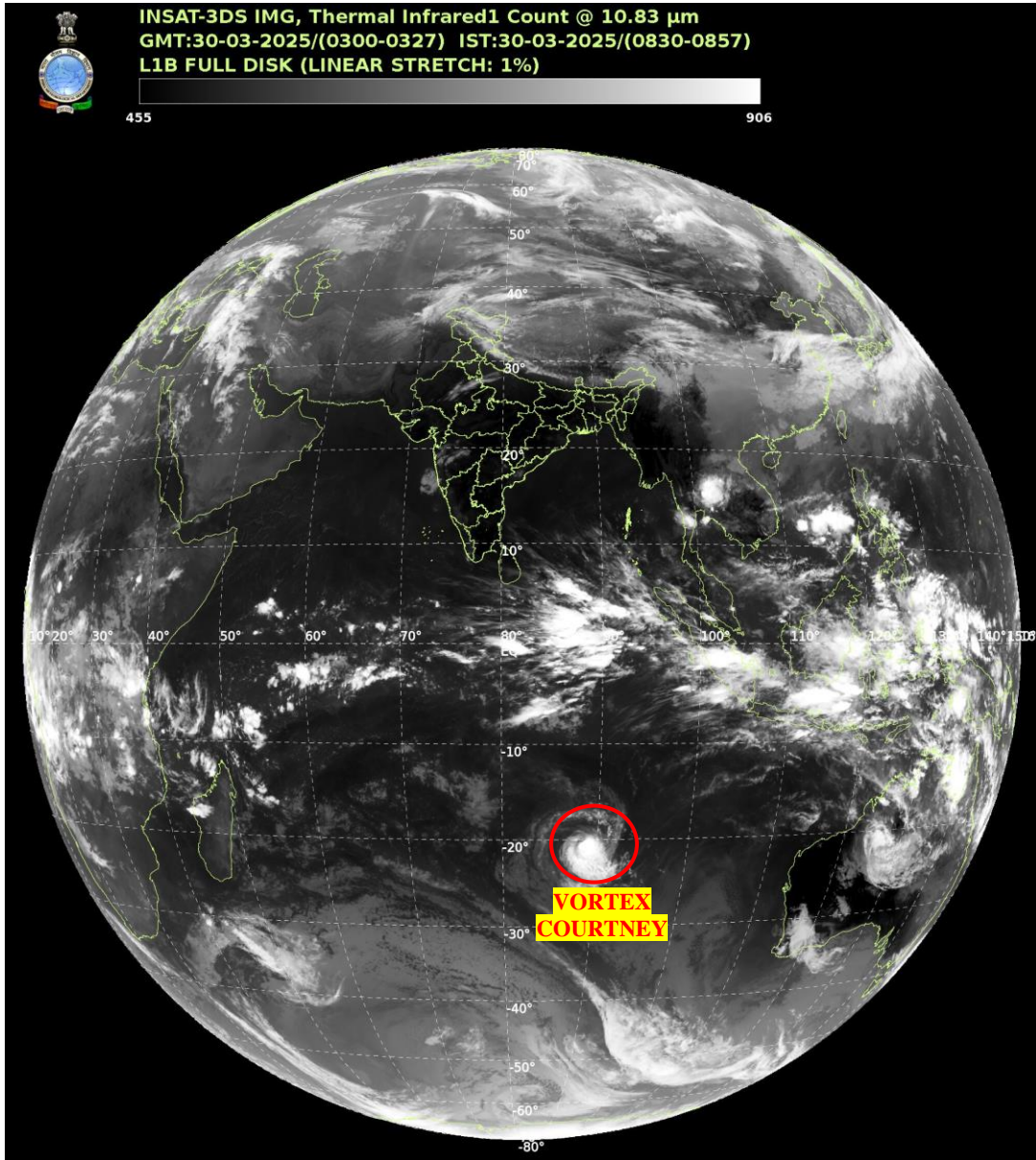
ARABIAN SEA:-

SCT LOW/MED CLOUDS WITH EMBDD ISOL WK CONVTN OVER EC ARSEA OFF MAHA-GOA COASTS (.)

BAY OF BENGAL & ANDAMAN SEA:-

SCT LOW/MED CLOUDS WITH EMBDD MOD TO INT CONVTN OVER SOUTH BAY SOUTH OF LAT 8.0N ADJ EQUATORIAL INDIAN OCEAN (.) SCT LOW/MED CLOUDS WITH EMBDD ISOL WK TO MOD CONVTN OVER REST SOUTH BAY & ANDAMAN SEA (.)

CLOUDS DESCRIPTION OUTSIDE INDIA:-



VORTEX (COURTNEY) OVER SOUTH INDIAN OCEAN:-

VORTEX (COURTNEY) OVER SOUTH INDIAN OCEAN (AREA E85 ADJ E95 H00 & H05) CENTERED NEAR 20.5S / 88.6E (.) INTENSITY T5.0/6.0 (.) MAXIMUM SUSTAINED WINDS 90-119 KTS & ABOVE (.) ASSTD SCT TO BKN LOW/MED CLOUDS WITH EMBDD INT TO V INT CONVTN OVER AREA BET LAT 18.0S TO 25.0S LONG 86.0E TO 92.0E (.)

SCT LOW/MED CLOUDS WITH EMBDD MOD TO INT CONVTN OVER NEPAL TIBET CHINA YELLOW SEA ADJ EAST CHINA SEA TAIWAN THAILAND GULF OF THAILAND CAMBODIA LAOS VIETNAM SUMATRA STR OF MALACCA MALAYSIA BORNEO SOUTH CHINA SEA JAVA ILS & SEA CELEBES ILS & SEA PHILIPPINES SULU SEA NORTH MADAGASCAR NORTH MOZAMBIQUE CHANNEL AND OVER INDIAN OCEAN BET LAT 5.0N TO 25.0S LONG 40.0E TO 125.0E (.)

TOO 30/0955 EF=

NNNN

LEGEND:-

REGION	NORTH	J&K HP PJB HARY DLH UP UTRKND
	EAST	BHR JHRKND CHTGH ORS WB SKM NORTH- EAST STATES
	WEST	RAJ MP GUJ MAHA GOA
	SOUTH	TLNGN AP KRNTK KER TN LKSDP ANDAMAN & NICOBAR ILS

CLOUD DISTRIBUTION	ISOL	ISOLATED (LESS THAN 25%)	
	SCT	SCATTERED (25 TO 50%)	
	BKN	BROKEN (51 TO 75%)	
	SLD	SOLID (GREATER THAN 75%)	
CLOUDS TOP TEMPERATURE	CTT	CLOUD TOP TEMPERATURE	
CONVECTION	WK CONVTN	WEAK CONVECTION (CTT GREATER THAN -25°C)	
	MOD CONVTN	MODERATE CONVECTION (CTT BETWEEN -25°C TO -40°C)	
	INT CONVTN	INTENSE CONVECTION (CTT BETWEEN -41°C TO -70°C)	
	V INT CONVTN	VERY INTENSE CONVECTION (CTT LESS THAN -70°C)	
METEOROLOGICAL SUB- DIVISIONS, STATES & UNION TERRITORIES	ARUPR	ARUNACHAL PRADESH	
	BHR	BIHAR	
	CHTGH	CHHATTISGARH	
	COTL AP	COASTAL ANDHRA PRADESH	
	COTL KRNTK	COASTAL KARNATAKA	
	COTL ORS	COASTAL ORISSA	
	GUJ	GUJARAT	
	GWB	GANGETIC WEST BENGAL	
	HARY	HARYANA	
	DLH	DELHI	
	HP	HIMACHAL PRADESH	
	J&K	JAMMU AND KASHMIR	
	JHRKND	JHARKHAND	
	KER	KERALA	
	KKN	KONKAN	
	LKSDP	LAKSHADWEEP	
	M MAHA	MADHYA MAHARASHTRA	
	MAHA	MAHARASHTRA	
	MANI	MANIPUR	
	MEGHA	MEGHALAYA	
	MIZO	MIZORAM	
	MP	MADHYA PRADESH	
		MRTHWD	MARATHWADA
		NAGA	NAGALAND
N COTL AP		NORTH COASTAL ANDHRA PRADESH	
NIK		NORTH INTERIOR KARNATAKA	
ORS		ORISSA	
PJB		PUNJAB	
RAJ		RAJASTHAN	
RYLSM		RAYALASEEMA	
SAU & KUTCH		SAURASHTRA & KUTCH	
SHWB		SUB-HIMALAYAN WEST BENGAL	
SIK		SOUTH INTERIOR KARNATAKA	
SKM		SIKKIM	

	TLNGN	TELANGANA
	TN	TAMIL NADU
	TRP	TRIPURA
	UP	UTTAR PRADESH
	UTRKND	UTTARAKHAND
	VID	VIDHARBHA
	SHWB	SUB HIMALAYAN WEST BENGAL
	GWB	GANGETIC WEST BENGAL
	ARSEA	ARABIAN SEA
	ILS	ISLANDS
MISCELLANEOUS	ASSW	IN ASSOCIATION WITH
	ASSTD	ASSOCIATED
	LLC	LOW LEVEL CIRCULATION
	EMBDD	EMBEDDED
	N/HOOD	NEIGHBOURHOOD
	EXT	EXTREME