

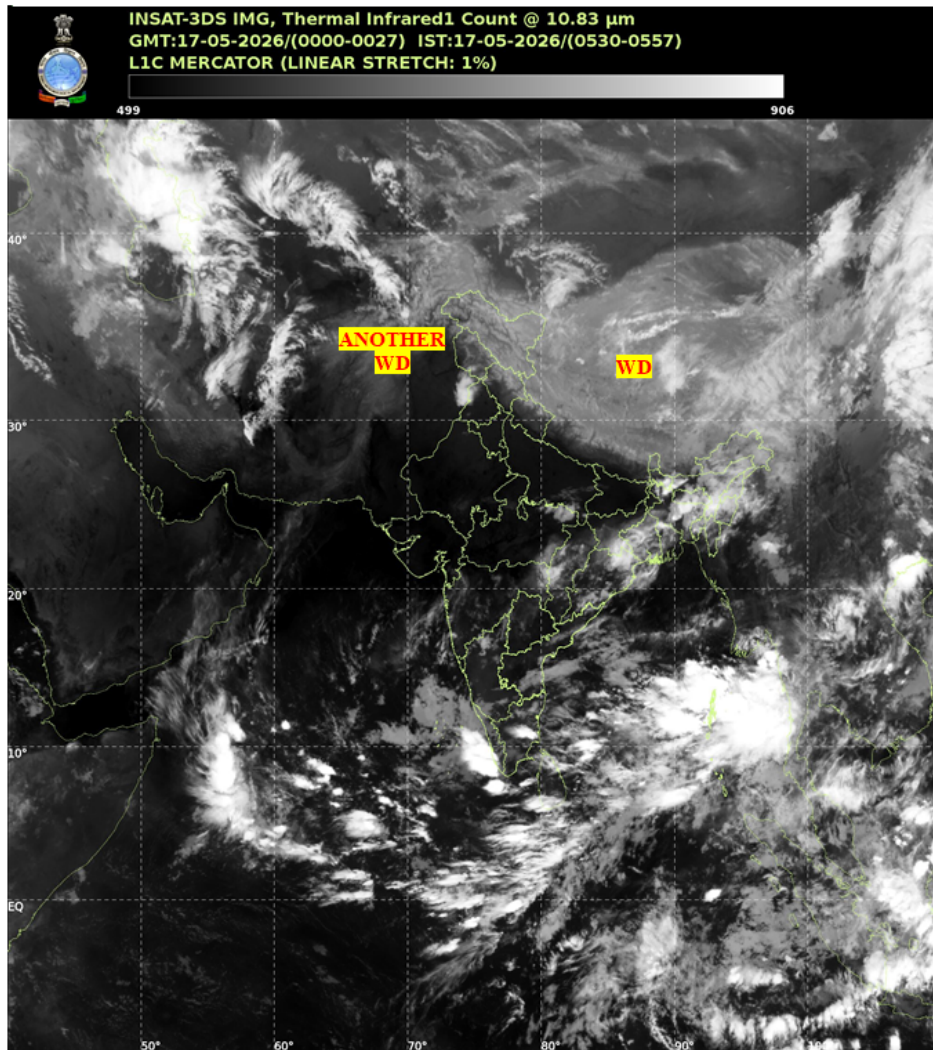


भारत मौसम विज्ञान विभाग  
पृथ्वी विज्ञान मंत्रालय  
India Meteorological Department  
Ministry of Earth Sciences



**SATELLITE BULLETIN BASED ON SATELLITE IMAGERIES AND PRODUCTS**

Date: 2026-05-17 Time: 00:00:00 UTC



TCIN50 DEMS 170000

SATELLITE BULLETIN BASED ON INSAT-3DS PIC OF 170000 UTC (.)

REGION COVERED BETWEEN LAT 50.0°N TO 35.0°S AND LONG 40.0°E TO 125.0°E (.)

**SALIENT FEATURES:**

**WESTERN DISTURBANCE (WD):-**

SCT MULTILAYERED CLOUDS OVER LADAKH J&K HP UTRKND TIBET ADJ CHINA IN ASSW WD OVER THE AREA (.)

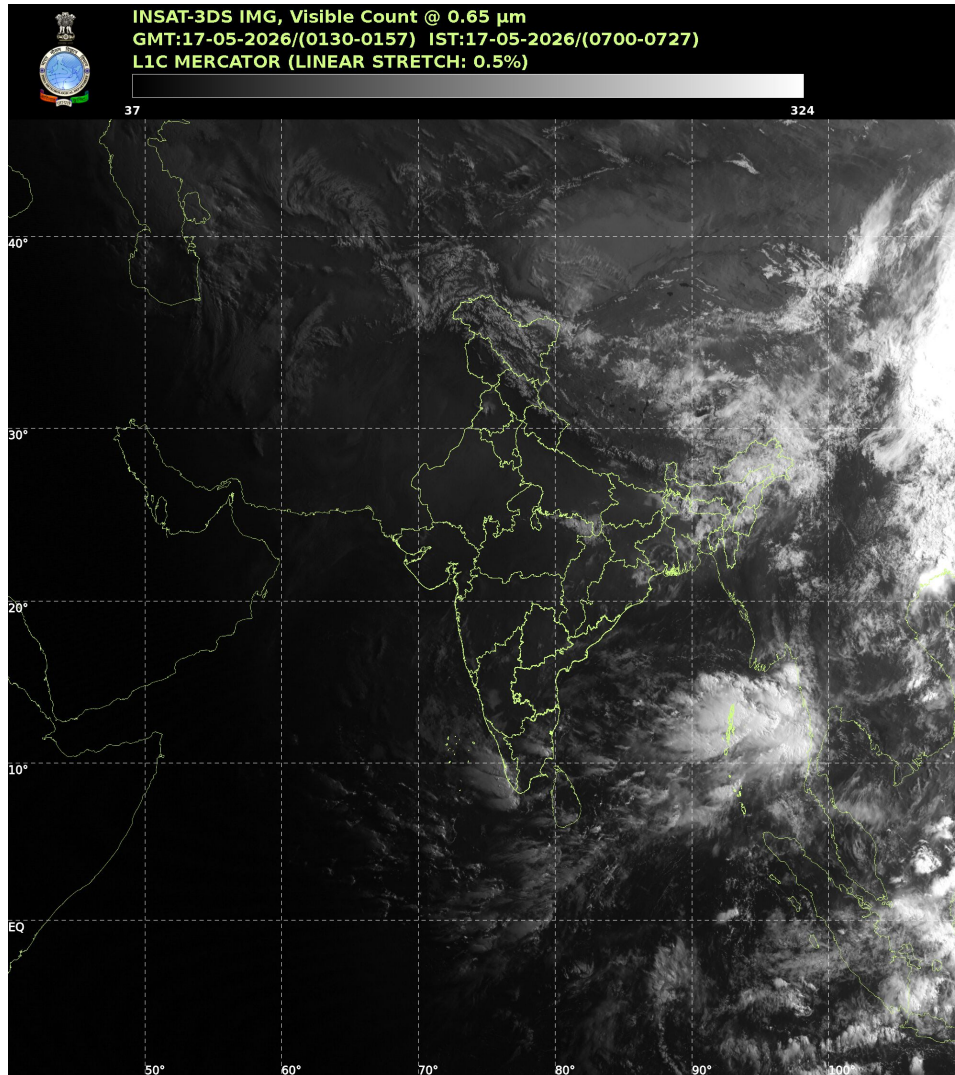
SCT MULTILAYERED CLOUDS OVER AFGAN N PAK AND N/HOOD IN ASSW ANOTHER WD OVER THE

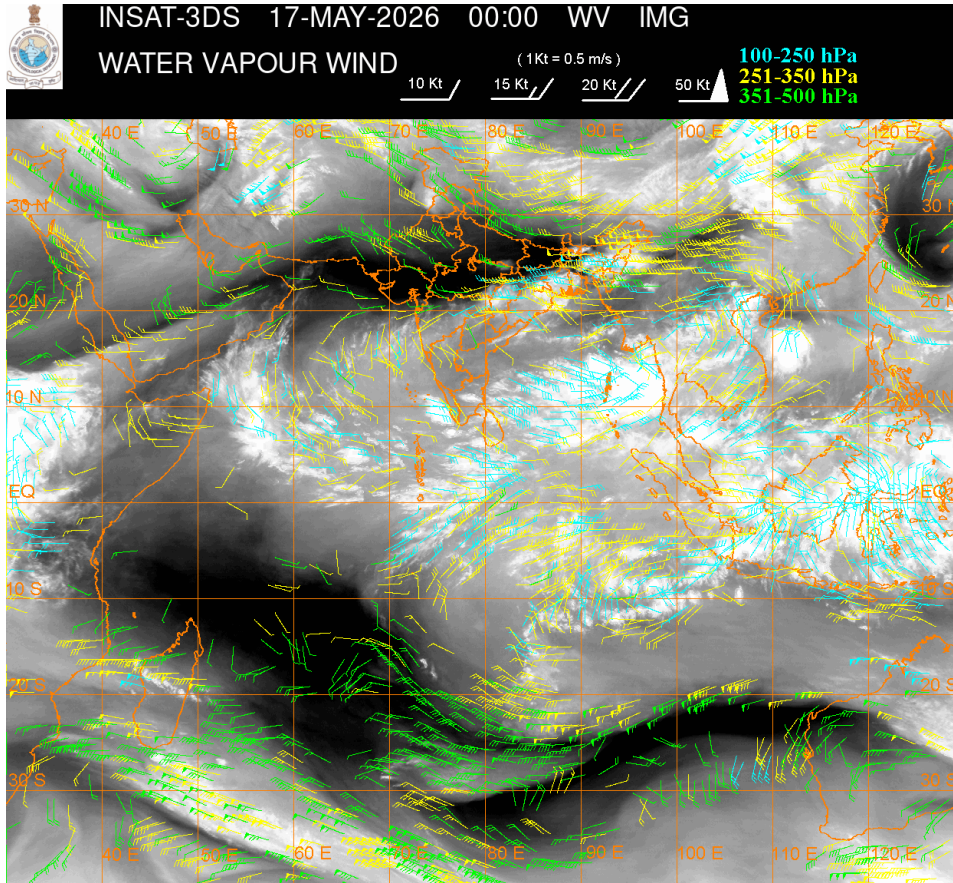
AREA (.)

**CONVECTIVE / THUNDERSTORM ACTIVITY:-**

**INTENSE TO VERY INTENSE CONVECTIVE / THUNDERSTORM ACTIVITY OVER S KER LKSDP ILS  
AREA ANDAMAN & NICOBAR ILS AREA (MINIMUM CTT MINUS 70-90 DEGREE CELSIUS) (.)**

**MODERATE TO INTENSE CONVECTIVE / THUNDERSTORM ACTIVITY OVER W J&K N PJB MEGHA  
ASSAM NAGA MIZO TRP N COTL TN CHTGH ORS SHWB (MINIMUM CTT MINUS 40-60 DEGREE  
CELSIUS) (.)**





**CLOUD DESCRIPTION WITHIN INDIA:**

**NORTH:**

SCT LOW/MED CLOUDS WITH EMBDD MOD TO INT CONVTN OVER J&K N PJB (.) SCT LOW/MED CLOUDS WITH EMBDD WK CONVTN OVER LADAKH HP UTRKND (.) SCT LOW/MED CLOUDS OVER S PJB UP(.)

**EAST:**

SCT LOW/MED CLOUDS WITH EMBDD MOD TO INT CONVTN OVER CHTGH ORS S JHRKND ASSAM MEGHA MIZO TRP AND ISOL WK TO MOD CONVTN OVER SKM SHWB REST NE STATES (.) ISOL TO SCT LOW/MED CLOUDS OVER BHR (.)

**WEST:**

SCT LOW/MED CLOUDS WITH EMBDD MOD TO INT CONVTN OVER E MP E VID AND WK TO MOD CONVTN OVER MAHA KKN GOA AND ISOL WK TO MOD CONVTN OVER E RAJ(.) SCT LOW/MED CLOUDS OVER W RAJ GUJ (.)

**SOUTH:**

SCT TO BKN LOW/MED CLOUDS WITH EMBDD INT TO V INT CONVTN OVER S KER ANDAMAN & NICOBAR ILS AREA (.) SCT LOW/MED CLOUDS WITH EMBDD MOD TO INT CONVTN OVER N COTL TN LKSDP ILS AREA (.) SCT LOW/MED CLOUDS WITH EMBDD WK CONVTN OVER REST KER REST TN TLNGN RYLSM KRNTK (.)

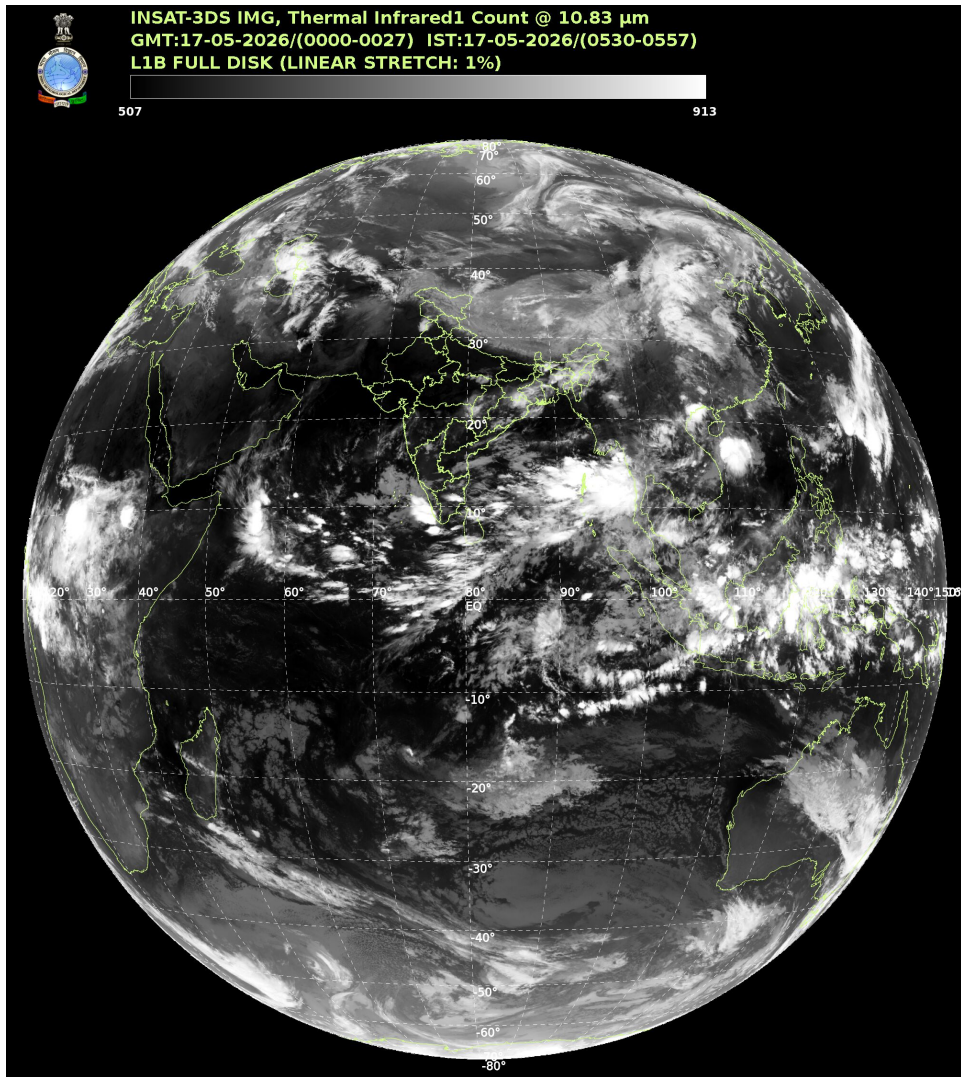
**ARABIAN SEA:**

SCT TO BKN LOW/MED CLOUDS WITH EMBDD INT TO V INT CONVTN OVER SW & SE ARSEA OFF KRNTK-KER COASTS LKSDP ILS AREA & MALDIVES AREA COMORIN AREA (.)

**BAY OF BENGAL & ANDAMAN SEA:**

SCT TO BKN LOW/MED CLOUDS WITH EMBDD INT TO V INT CONVTN OVER EC & SOUTH BAY ANDAMAN SEA GULF OF MARTABAN TENASSERIM COAST (.) SCT LOW/MED CLOUDS WITH EMBDD ISOL MOD TO INT CONVTN OVER REST BAY (.)

**CLOUD DESCRIPTION OUTSIDE INDIA:**



SCT LOW/MED CLOUDS WITH EMBDD MOD TO INT CONVTN OVER SRI LANKA PALK STR GULF OF MANNAR MALDIVES AREA TIBET CHINA EAST CHINA SEA TAIWAN MYANMAR THAILAND GULF OF THAILAND CAMBODIA LAOS VIETNAM GULF OF TONKIN HAINAN SUMATRA STR OF MALACCA MALAYSIA BORNEO SOUTH CHINA SEA JAVA ILS & SEA CELEBES ILS & SEA PHILIPPINES SULU SEA AND OVER INDIAN OCEAN BET LAT 5.0N TO 10.0S LONG 50.0E TO 110.0E AND LAT 10.0S TO 30.0S LONG 70.0E TO 120.0E (.)

T00 17/0700 HRS IST

NNNN

**LEGEND**

REGION	
NORTH	J&K HP UTRKND PJB HARY DLH UP
EAST	BHR JHRKND CHTGH ORS WB SKM NORTH-EAST STATES
WEST	RAJ MP GUJ MAHA GOA
SOUTH	TLNGN AP KRNTK KER TN LKSDP ANDAMAN & NICOBAR ILS
CLOUD DISTRIBUTION	

<b>ISOL</b>	<b>ISOLATED (LESS THAN 25%)</b>
<b>SCT</b>	<b>SCATTERED (25 TO 50%)</b>
<b>BKN</b>	<b>BROKEN (51 TO 75%)</b>
<b>SLD</b>	<b>SOLID (GREATER THAN 75%)</b>
<b>CLOUDS TOP TEMPERATURE</b>	
<b>CTT</b>	<b>CLOUD TOP TEMPERATURE</b>
<b>CONVECTION</b>	
<b>WK CONVTN</b>	<b>WEAK CONVECTION (CTT GREATER THAN -25°C)</b>
<b>MOD CONVTN</b>	<b>MODERATE CONVECTION (CTT BETWEEN -25°C TO -40°C)</b>
<b>INT CONVTN</b>	<b>INTENSE CONVECTION (CTT BETWEEN -41°C TO -70°C)</b>
<b>V INT CONVTN</b>	<b>VERY INTENSE CONVECTION (CTT LESS THAN -70°C)</b>
<b>METEOROLOGICAL SUB-DIVISIONS, STATES &amp; UNION TERRITORIES</b>	
<b>J&amp;K</b>	<b>JAMMU AND KASHMIR</b>
<b>HP</b>	<b>HIMACHAL PRADESH</b>
<b>UTRKND</b>	<b>UTTARAKHAND</b>
<b>PJB</b>	<b>PUNJAB</b>
<b>HARY</b>	<b>HARYANA</b>
<b>DLH</b>	<b>DELHI</b>
<b>BHR</b>	<b>BIHAR</b>
<b>JHRKND</b>	<b>JHARKHAND</b>
<b>CHTGH</b>	<b>CHHATTISGARH</b>
<b>ORS</b>	<b>ORISSA</b>
<b>GWB</b>	<b>GANGETIC WEST BENGAL</b>
<b>SHWB</b>	<b>SUB-HIMALAYAN WEST BENGAL</b>
<b>SKM</b>	<b>SIKKIM</b>
<b>ARUPR</b>	<b>ARUNACHAL PRADESH</b>
<b>ASSAM</b>	<b>ASSAM</b>
<b>MEGHA</b>	<b>MEGHALAYA</b>
<b>MANI</b>	<b>MANIPUR</b>
<b>MIZO</b>	<b>MIZORAM</b>
<b>TRP</b>	<b>TRIPURA</b>
<b>RAJ</b>	<b>RAJASTHAN</b>
<b>MP</b>	<b>MADHYA PRADESH</b>
<b>GUJ</b>	<b>GUJARAT</b>

<b>SAU &amp; KUTCH</b>	<b>SAURASHTRA &amp; KUTCH</b>
<b>MAHA</b>	<b>MAHARASHTRA</b>
<b>M MAHA</b>	<b>MADHYA MAHARASHTRA</b>
<b>MRTHWD</b>	<b>MARATHWADA</b>
<b>VID</b>	<b>VIDARBHA</b>
<b>KKN</b>	<b>KONKAN</b>
<b>TLNGN</b>	<b>TELANGANA</b>
<b>RYLSM</b>	<b>RAYALSEEMA</b>
<b>COTL AP</b>	<b>COASTAL ANDHRA PRADESH</b>
<b>NIK</b>	<b>NORTH INTERIOR KARNATAKA</b>
<b>SIK</b>	<b>SOUTH INTERIOR KARNATAKA</b>
<b>COTL KRNTK</b>	<b>COASTAL KARNATAKA</b>
<b>KER</b>	<b>KERALA</b>
<b>TN</b>	<b>TAMILNADU</b>
<b>LKSDP</b>	<b>LAKSHADWEEP</b>
<b>ILS</b>	<b>ISLANDS</b>
<b>ARSEA</b>	<b>ARABIAN SEA</b>
<b>MISCELLANEOUS</b>	
<b>ASSW</b>	<b>IN ASSOCIATION WITH</b>
<b>ASSTD</b>	<b>ASSOCIATED</b>
<b>LLC</b>	<b>LOW LEVEL CIRCULATION</b>
<b>EMBDD</b>	<b>EMBEDDED</b>
<b>N/HOOD</b>	<b>NEIGHBOURHOOD</b>
<b>EXT</b>	<b>EXTREME</b>